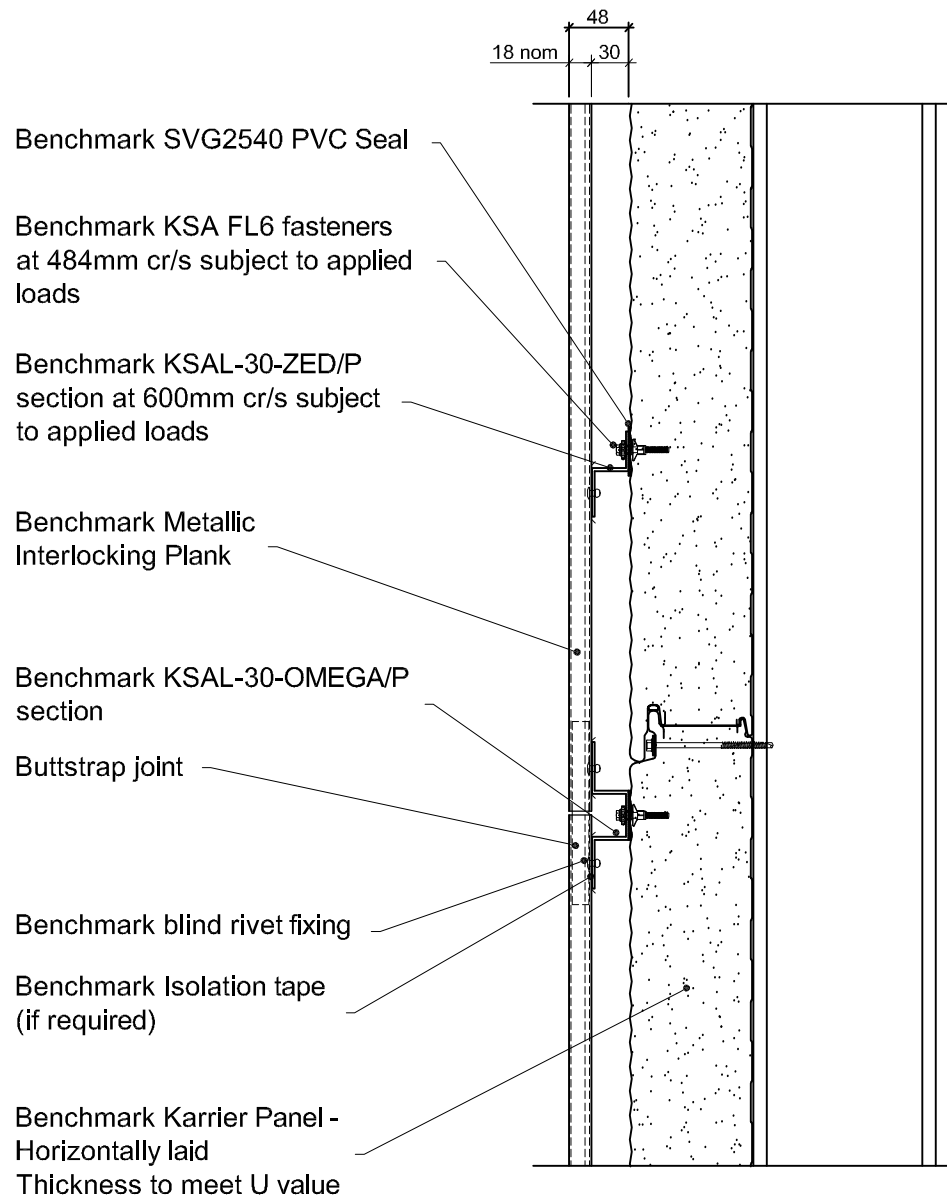
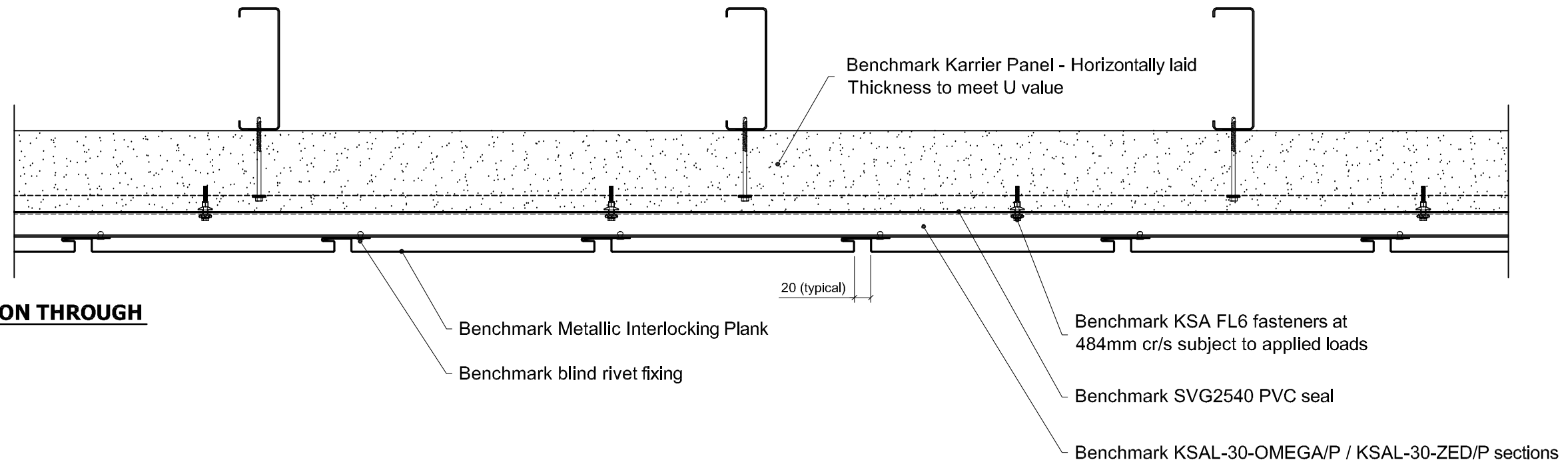
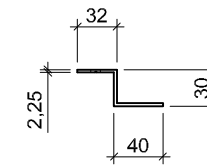


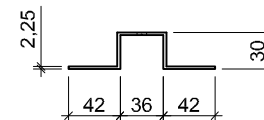
PLAN SECTION THROUGH



CROSS SECTION THROUGH



Benchmark KSAL-30-ZED/P Section



Benchmark KSAL-30-OMEGA/P Section

Thicknesses, Finishes and Colours

Please refer to latest product guide and website.

Panel Sizes and Tolerances

Please refer to current data sheet.

Structural Rails

Design for lateral loads and for gravity load of façade system. System weights are provided in current product data sheets.

Benchmark KSA FL6 Fasteners

Must not be positioned less than 100mm from a site cut edge.

Dissimilar Metals

Contact between dissimilar metals must be prevented with PVC isolation tape.

Open Edges


Open edges should be fitted with insect mesh

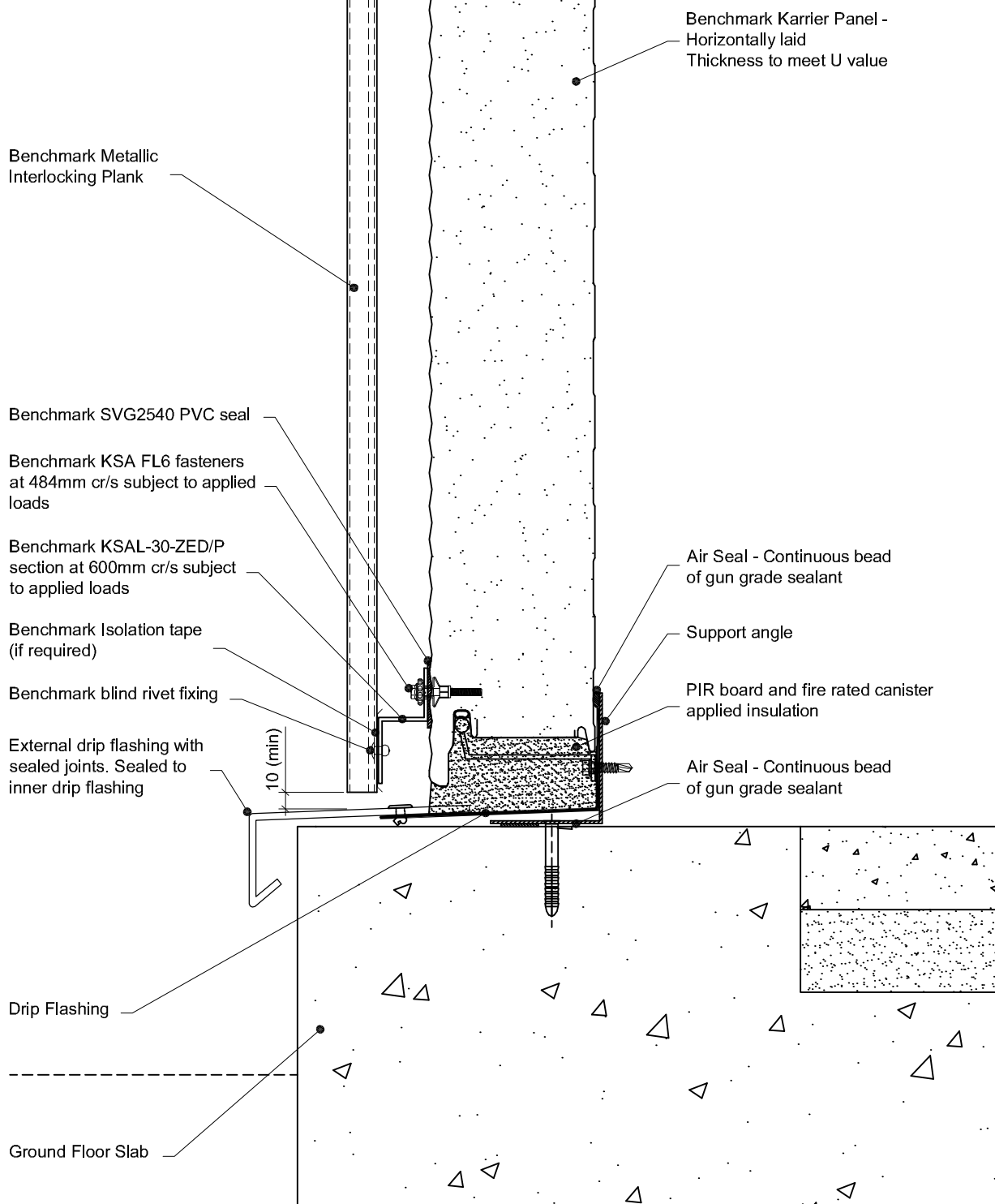
Cavity Barriers

Cavity barriers are not supplied with the Benchmark Facade system and must be specified and sourced separately.

Steelwork Tolerances

The permissible steelwork tolerance between the bearing planes of adjacent supports is ± 5 mm

Project:		 <p>By Kingspan</p> <p>© Kingspan 2013</p>	
System: Metallic Interlocking Plank + Karrier Panel (Hz)			Greenfield Business Park No.2 Greenfield, Holywell Flintshire. CH8 7GJ Tel: 01352 716 100 Fax: 01352 710 161 Technical: 0800 970 9036 Email: technical@kingspanbenchmark.com Website: www.kingspanbenchmark.com
Drawing Title: System Layout			
Drawn By: BT	Date: 01/09/2011		
Drawing N ^o . MIP Vt KP Hz 100	Rev: A		



Project:

System: Metallic Interlocking Plank + Karrier Panel (Hz)

Drawing Title: Drip Detail

Drawn By: BT

Date: 01/09/2012

Drawing N°. MIP Vt KP Hz 101

Rev: A

Greenfield Business Park No.2
Greenfield, Holywell
Flintshire, CH8 7GJ
Tel: 01352 716 100
Fax: 01352 710 161
Technical: 0800 970 9036
Email: technical@kingspanbenchmark.com
Website: www.kingspanbenchmark.com



By Kingspan

© Kingspan 2013

Benchmark Metallic Interlocking Plank

Benchmark Karrier Panel -
Horizontally laid
Thickness to meet U value

Benchmark SVG2540 PVC seal

Benchmark KSA FL6 fasteners
at 484mm cr/s subject to applied
loads

Benchmark KSAL-30-ZED/P
section at 600mm cr/s subject
to applied loads

Benchmark Isolation tape
(if required)

Benchmark blind rivet fixing

External drip flashing with
sealed joints. Sealed to
inner drip flashing

10 (min)

Air Seal - Continuous bead
of gun grade sealant

Support angle

PIR board and fire rated canister
applied insulation

Air Seal - Continuous bead
of gun grade sealant

Drip Flashing

Air Seal - Continuous Bead
Of Gun Grade Sealant

Closure flashing

Brickwork

Project:

System: Metallic Interlocking Plank + Karrier Panel (Hz)

Drawing Title: Drip Detail

Drawn By: BT

Date: 01/09/2012

Drawing N°. MIP Vt KP Hz 102

Rev: A

Greenfield Business Park No.2
Greenfield, Holywell
Flintshire, CH8 7GJ
Tel: 01352 716 100
Fax: 01352 710 161

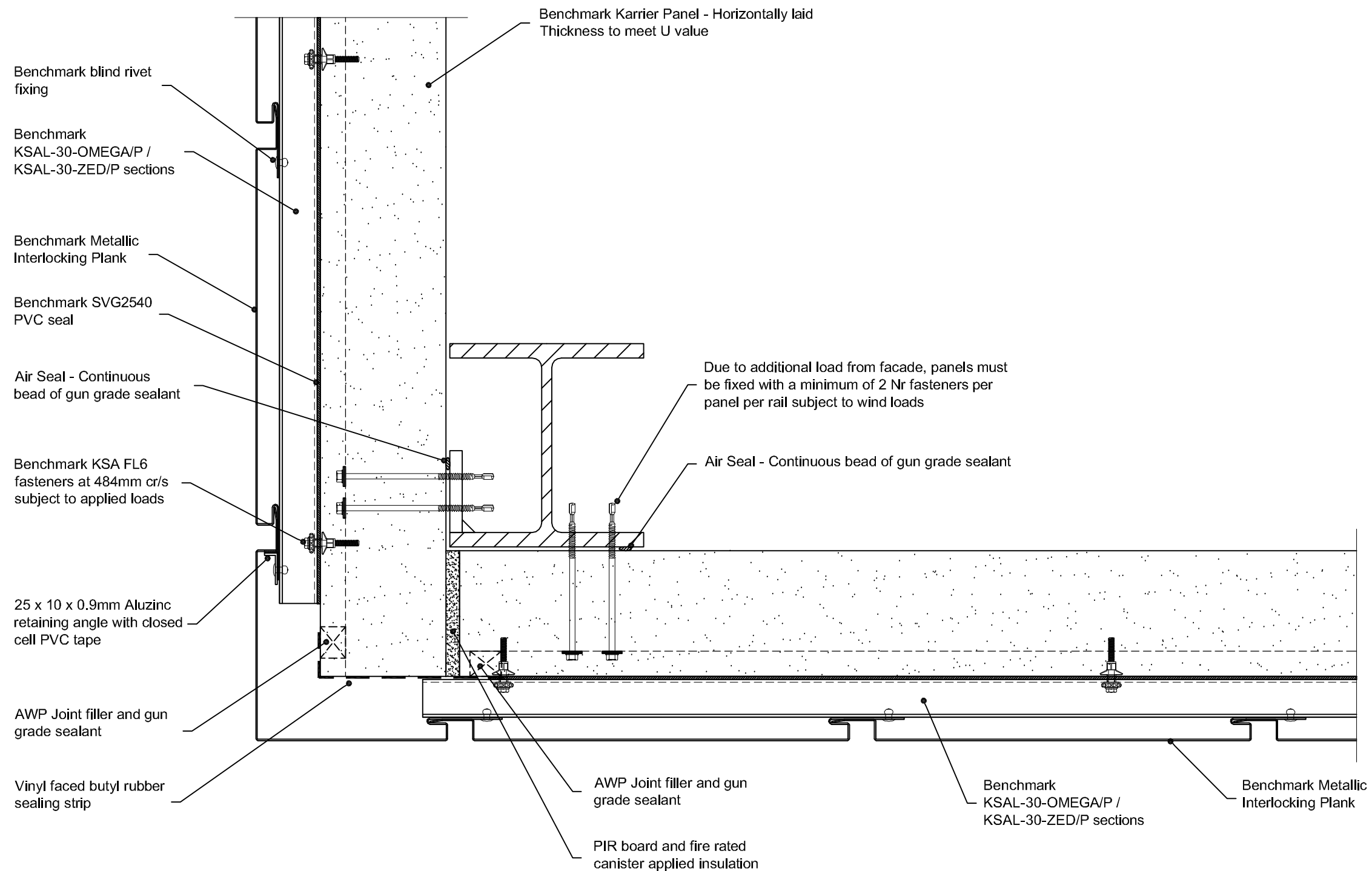
Technical: 0800 970 9036


Email: technical@kingspanbenchmark.com
Website: www.kingspanbenchmark.com

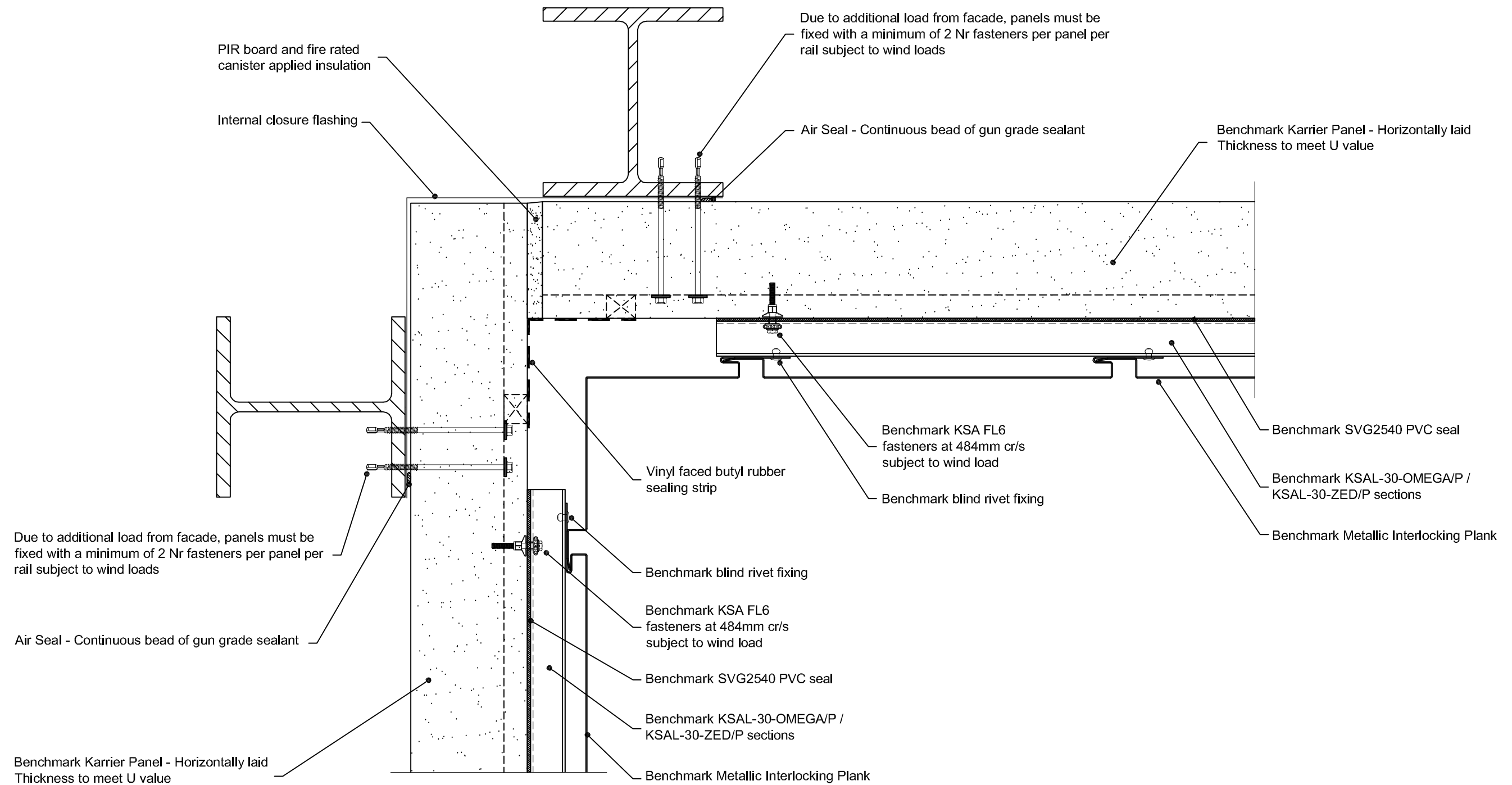



By Kingspan

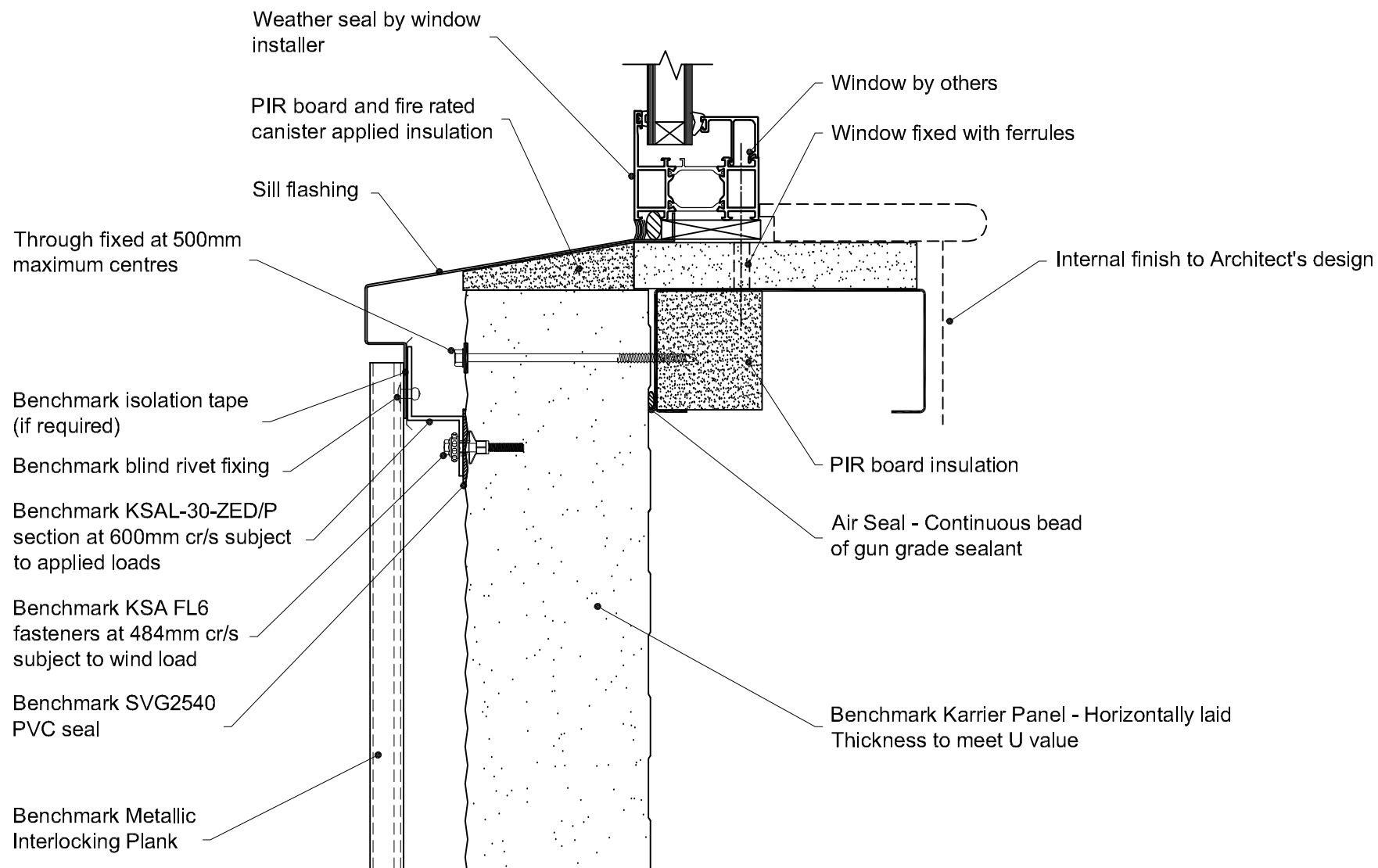
© Kingspan 2013



Project:		Greenfield Business Park No.2 Greenfield, Holywell Flintshire. CH8 7GJ Tel: 01352 716 100 Fax: 01352 710 161 Technical: 0800 970 9036 Email: technical@kingspanbenchmark.com Website: www.kingspanbenchmark.com	
System: Metallic Interlocking Plank + Karrier Panel (Hz)		 By Kingspan © Kingspan 2013	
Drawing Title: External Corner			
Drawn By: BT	Date: 01/09/2011		
Drawing N°. MIP Vt KP Hz 103	Rev: B		



Project:		Greenfield Business Park No.2 Greenfield, Holywell Flintshire. CH8 7GJ Tel: 01352 716 100 Fax: 01352 710 161 Technical: 0800 970 9036 Email: technical@kingspanbenchmark.com Website: www.kingspanbenchmark.com	
System: Metallic Interlocking Plank + Karrier Panel (Hz)		 By Kingspan © Kingspan 2013	
Drawing Title: Internal Corner			
Drawn By: BT	Date: 01/09/2011		
Drawing N°. MIP Vt KP Hz 104	Rev: A		



Project:

System: Metallic Interlocking Plank + Karrier Panel (Hz)

Drawing Title: Window Sill

Drawn By: BT

Date: 01/09/2011

Drawing No. MIP Vt KP Hz 106

Rev: A

Greenfield Business Park No.2

Greenfield, Holywell

Flintshire. CH8 7GJ

Tel: 01352 716 100

Fax: 01352 710 161

Technical: 0800 970 9036

Email: technical@kingspanbenchmark.com

Website: www.kingspanbenchmark.com



By Kingspan

© Kingspan 2013

Benchmark Metallic
Interlocking Plank

Benchmark SVG2540
PVC seal

Benchmark KSA FL6
fasteners at 484mm cr/s
subject to wind load

Benchmark KSAL-30-ZED/P
section at 600mm cr/s subject
to applied loads

Benchmark blind rivet fixing

Benchmark isolation tape
(if required)

Window head flashing
with weep holes

Benchmark Karrier Panel - Horizontally laid
Thickness to meet U value

Air Seal - Continuous bead
of gun grade sealant

Through fixed at 500mm
maximum centres

PIR board insulation

Internal finish to Architect's design

Weather seal by
window installer

PIR board insulation

Window fixed with ferrules

Window by others

Project:

System: Metallic Interlocking Plank + Karrier Panel (Hz)

Drawing Title: Window Head

Drawn By: BT

Date: 01/09/2011

Drawing N°. MIP Vt KP Hz 107

Rev: A

Greenfield Business Park No.2
Greenfield, Holywell
Flintshire. CH8 7GJ

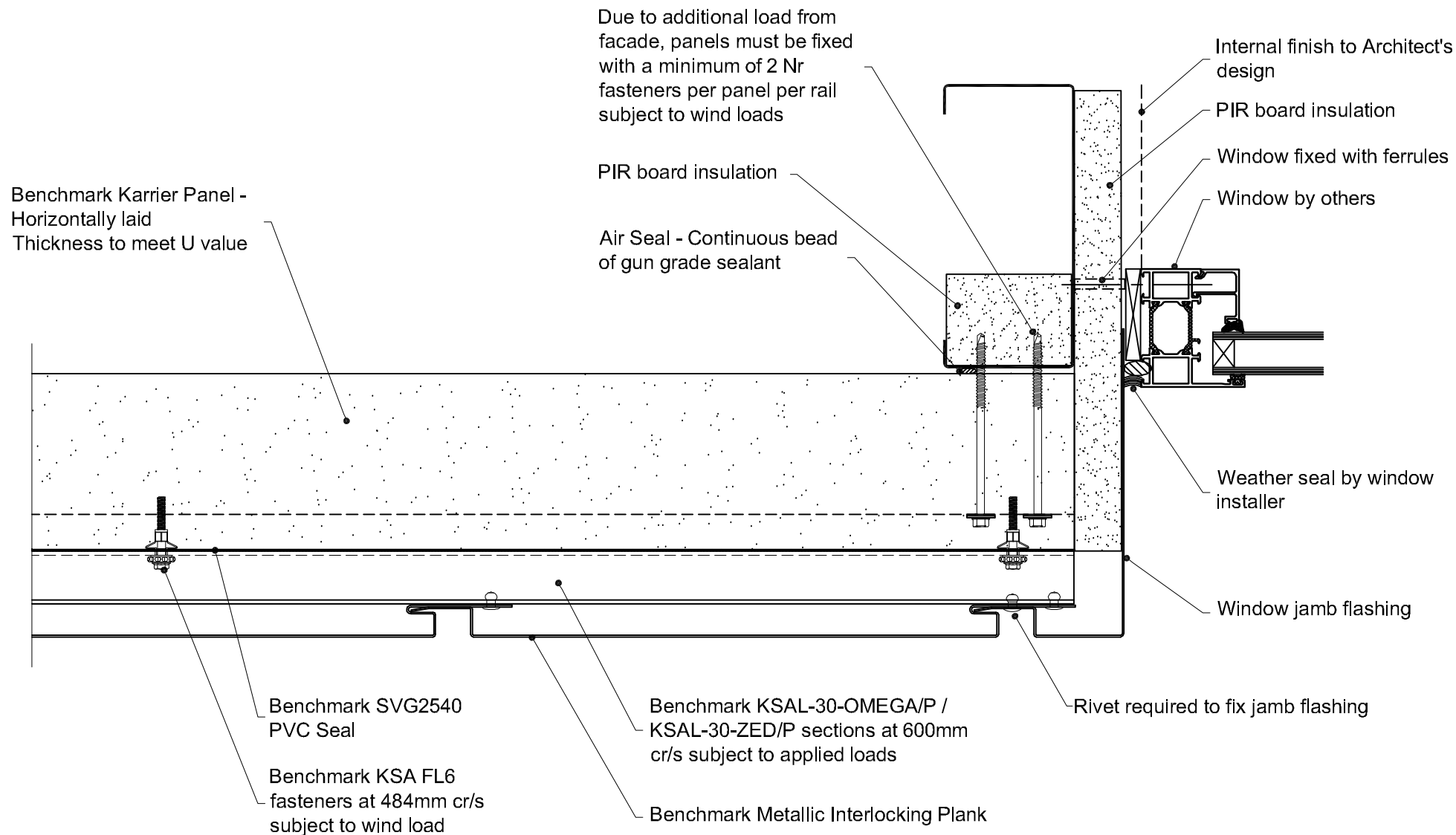
Tel: 01352 716 100
Fax: 01352 710 161
Technical: 0800 970 9036

Email: technical@kingspanbenchmark.com
Website: www.kingspanbenchmark.com

BENCHMARK

By Kingspan

© Kingspan 2013



Project:

System: Metallic Interlocking Plank + Karrier Panel (Hz)

Drawing Title: Window Jamb

Drawn By: BT

Date: 05/11/2012

Drawing N°. MIP Vt KP Hz 108

Rev: B (CM)

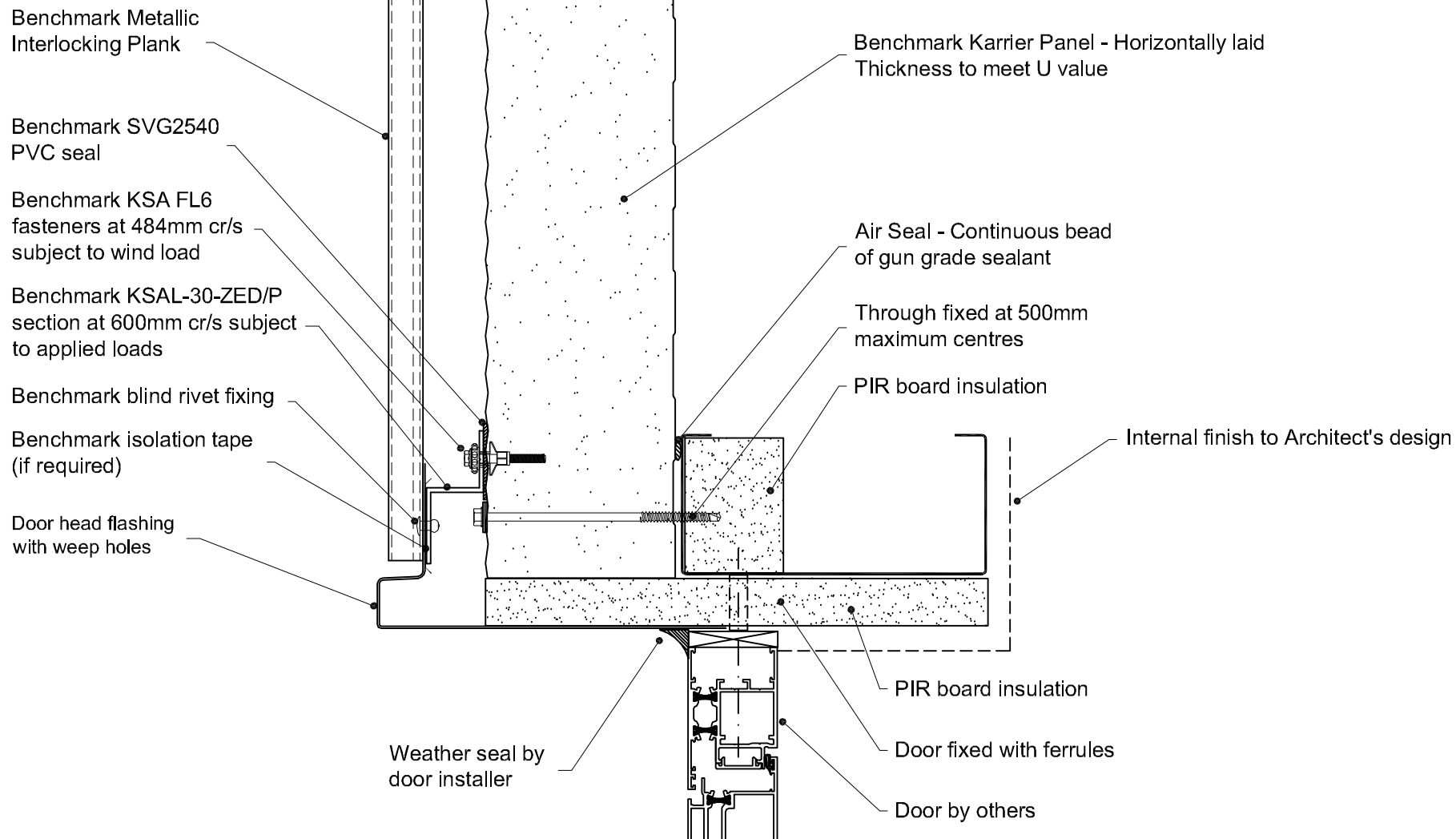
Greenfield Business Park No.2
Greenfield, Holywell
Flintshire. CH8 7GJ
Tel: 01352 716 100
Fax: 01352 710 161
Technical: 0800 970 9036

Email: technical@kingspanbenchmark.com
Website: www.kingspanbenchmark.com



By Kingspan

© Kingspan 2013



Project:

System: Metallic Interlocking Plank + Karrier Panel (Hz)

Drawing Title: Door Head

Drawn By: BT

Date: 01/09/2011

Drawing N°. MIP Vt KP Hz 109

Rev: A

Greenfield Business Park No.2
Greenfield, Holywell
Flintshire. CH8 7GJ

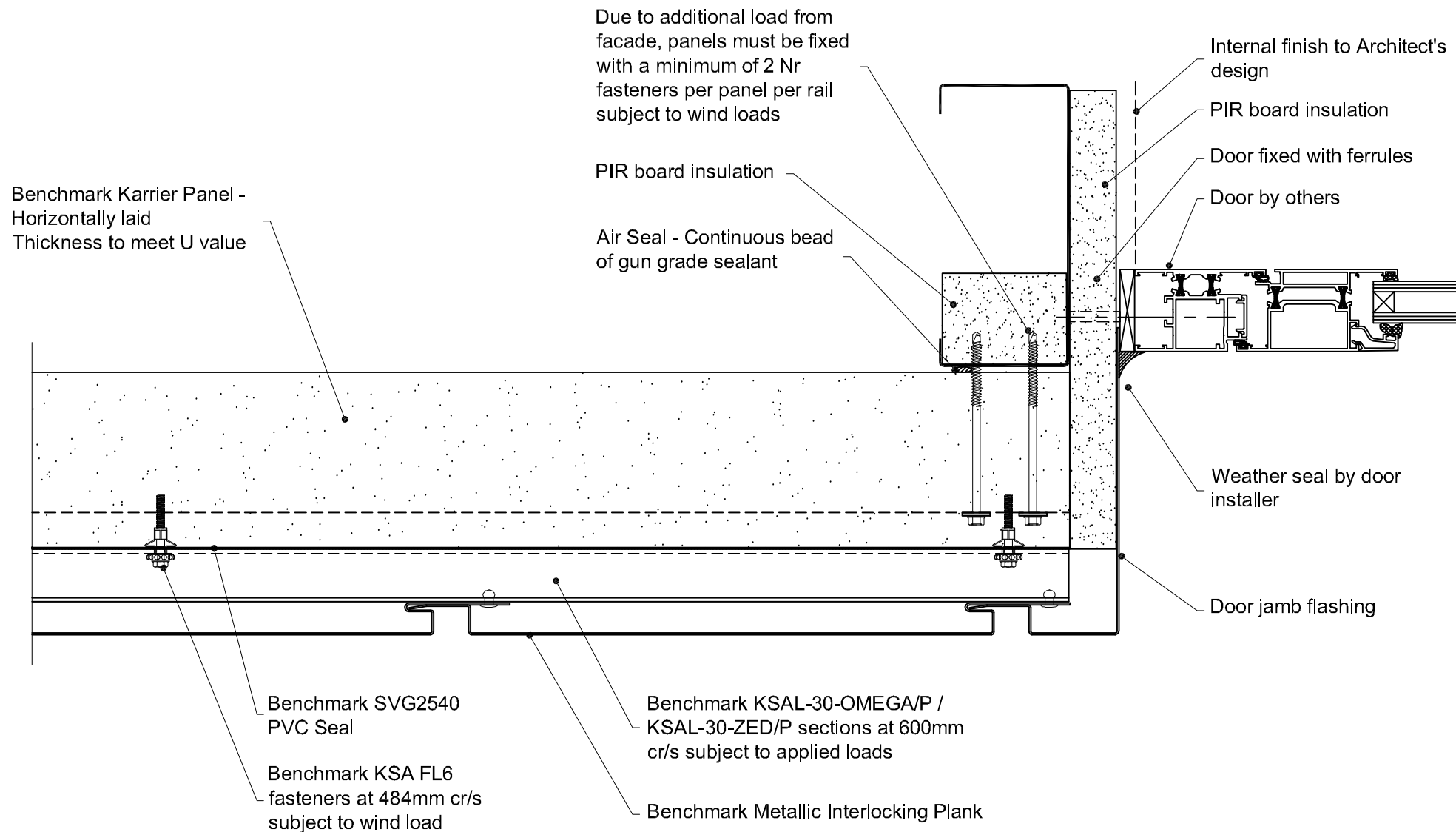
Tel: 01352 716 100
Fax: 01352 710 161
Technical: 0800 970 9036

Email: technical@kingspanbenchmark.com
Website: www.kingspanbenchmark.com



By Kingspan

© Kingspan 2013



Project:

System: Metallic Interlocking Plank + Karrier Panel (Hz)

Drawing Title: Door Jamb

Drawn By: BT

Date: 01/09/2011

Drawing N°. MIP Vt KP Hz 110

Rev: A

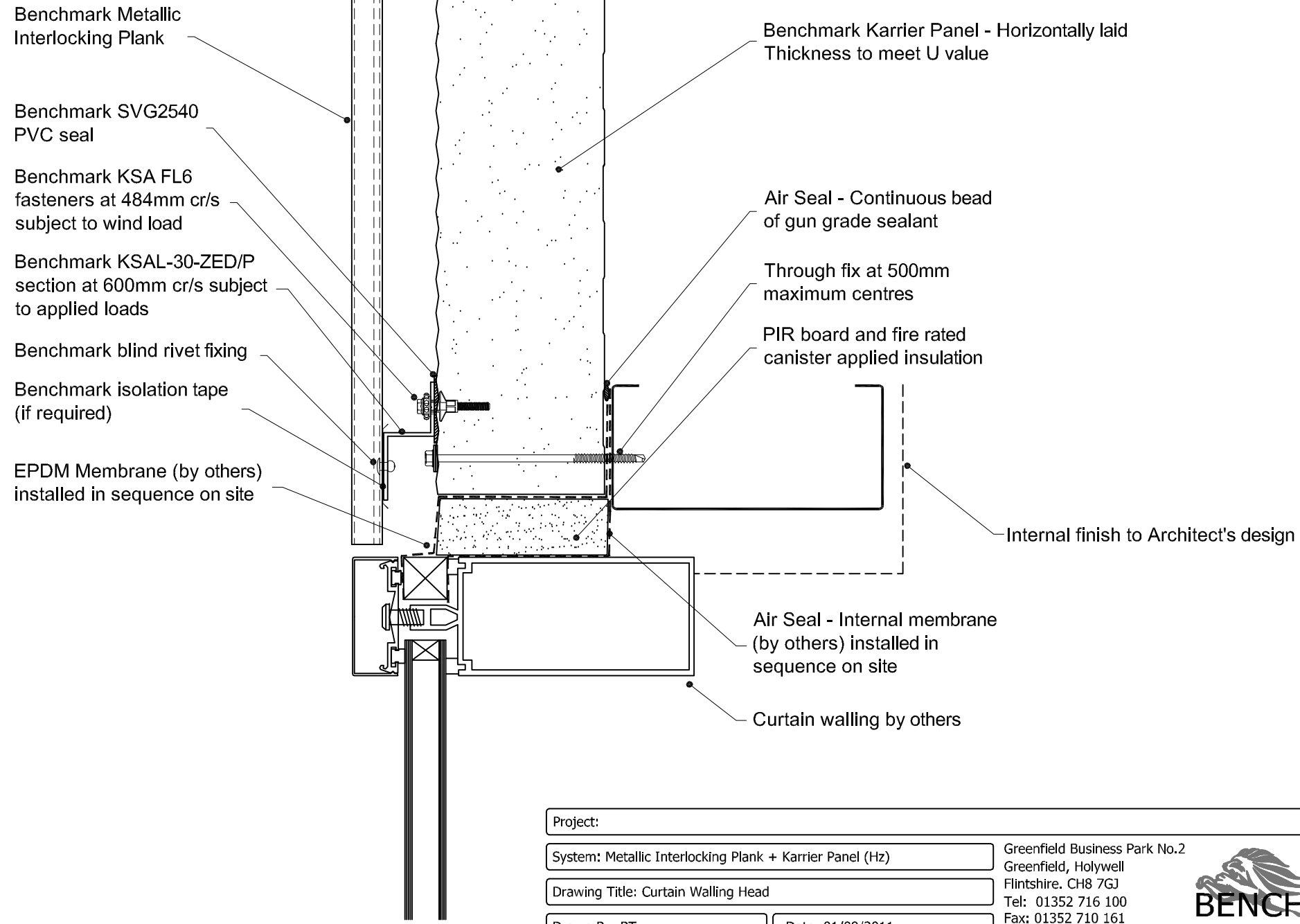
Greenfield Business Park No.2
Greenfield, Holywell
Flintshire. CH8 7GJ
Tel: 01352 716 100
Fax: 01352 710 161
Technical: 0800 970 9036

Email: technical@kingspanbenchmark.com
Website: www.kingspanbenchmark.com

BENCHMARK


By Kingspan

© Kingspan 2013



Project:	
System: Metallic Interlocking Plank + Karrier Panel (Hz)	
Drawing Title: Curtain Walling Head	
Drawn By: BT	Date: 01/09/2011
Drawing N°. MIP Vt KP Hz 111	Rev: A

Greenfield Business Park No.2
Greenfield, Holywell
Flintshire. CH8 7GJ
Tel: 01352 716 100
Fax: 01352 710 161
Technical: 0800 970 9036
Email: technical@kingspanbenchmark.com
Website: www.kingspanbenchmark.com



BENCHMARK

By Kingspan

© Kingspan 2013

0 100mm

Benchmark Karrier Panel -
Horizontally laid
Thickness to meet U value

Due to additional load from
facade, panels must be fixed
with a minimum of 2 Nr
fasteners per panel per rail
subject to wind loads

Internal finish to Architect's
design

Air Seal - Internal membrane
(by others) installed in
sequence on site

PIR board and fire rated
canister applied insulation

Curtain walling by others

Benchmark SVG2540
PVC Seal

Benchmark KSA FL6
fasteners at 484mm cr/s
subject to wind load

Benchmark KSAL-30-OMEGA/P /
KSAL-30-ZED/P sections at 600mm
cr/s subject to applied loads

Benchmark Metallic Interlocking Plank

EPDM Membrane (by others)
installed in sequence on site

Jamb Flashing

Benchmark KSA FL6
fasteners at 500mm cr/s

Project:

System: Metallic Interlocking Plank + Karrier Panel (Hz)

Drawing Title: Curtain Walling Jamb

Drawn By: BT

Date: 01/09/2011

Drawing N°. MIP Vt KP Hz 112

Rev: A

Greenfield Business Park No.2
Greenfield, Holywell
Flintshire. CH8 7GJ
Tel: 01352 716 100
Fax: 01352 710 161
Technical: 0800 970 9036

Email: technical@kingspanbenchmark.com
Website: www.kingspanbenchmark.com

BENCHMARK

By Kingspan

© Kingspan 2013

Air seal - EPDM bubble gasket
60 x 10mm Kingspan Ref: VJ1

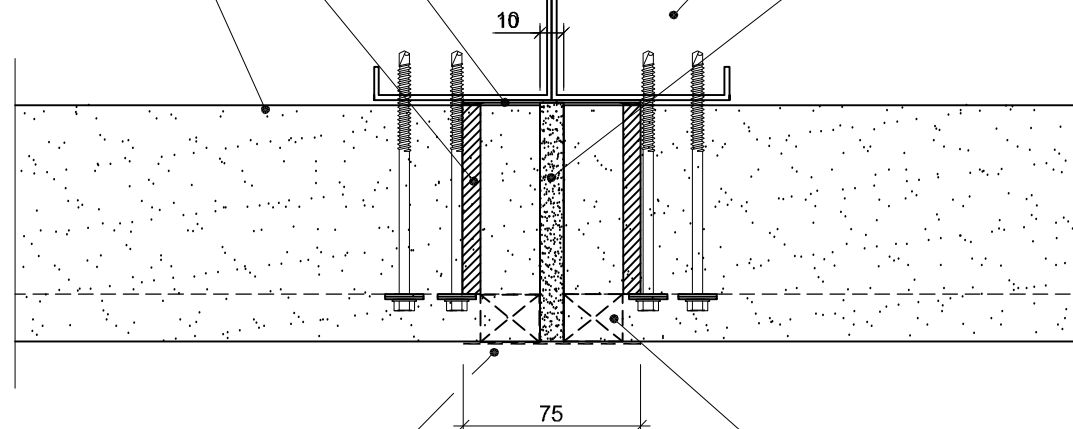
Air seal - Gun grade sealant to
male panel joint

Benchmark Karrier Panel -
Horizontally laid. Thickness to
meet U Value.

Vertical support

Due to additional load from facade, panels must
be fixed with a minimum of 2 Nr fasteners per
panel per rail subject to wind loads

PIR and fire rated canister applied insulation.



Vinyl faced butyl
rubber sealing strip

AWP joint filler and gun grade sealant

The Benchmark Metallic Interlocking Plank
has been removed for clarity of detail

Project:

System: Metallic Interlocking Plank + Karrier Panel (Hz)

Drawing Title: Karrier Panel Vertical Joint

Drawn By: BT

Date: 01/09/2011

Drawing N°. MIP Vt KP Hz 113

Rev: A

Greenfield Business Park No.2
Greenfield, Holywell
Flintshire. CH8 7GJ

Tel: 01352 716 100
Fax: 01352 710 161
Technical: 0800 970 9036

Email: technical@kingspanbenchmark.com
Website: www.kingspanbenchmark.com

BENCHMARK

By Kingspan

© Kingspan 2013