

### Benchmark KSAL30-ZED Section

PVC Isolation tape to flanges of aluminium sections if required

20 (typical)

Benchmark Metallic Interlocking Plank

Benchmark KSAFL6 fasteners at 484mm cr/s subject to applied load

Benchmark KSAL30-ZED / KSAL30-OMEGA section

Benchmark Rivet

Benchmark SVG2540 PVC seal

**Note**  
Planks are installed working from top to bottom.

**Rivets** - To be set with nose piece KSMR-NP

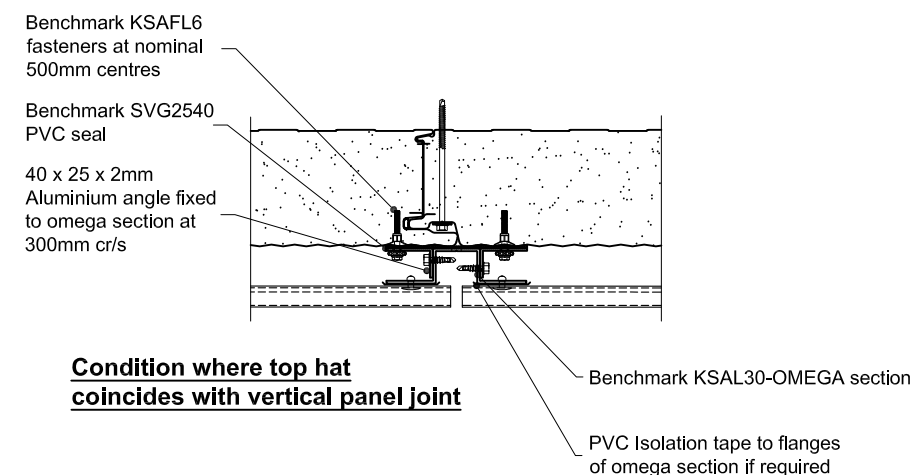
For aluminium, zinc and stainless steel cassettes:-

**Benchmark KSMR-ALU**

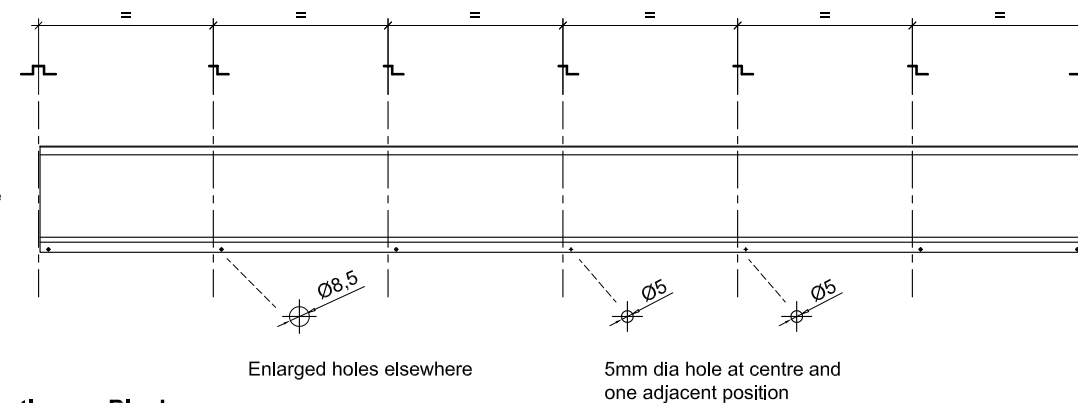
For corten and copper cassettes:-

**Benchmark KSMR-SS**

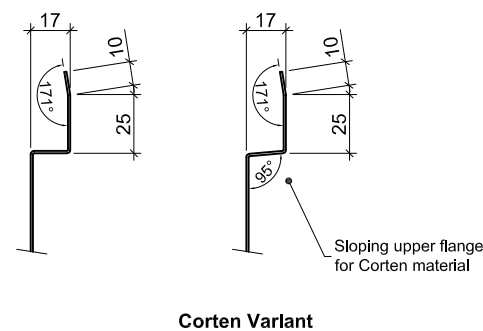
**Typical Details of Plank for  
20mm horizontal joint width  
(Scales vary)**



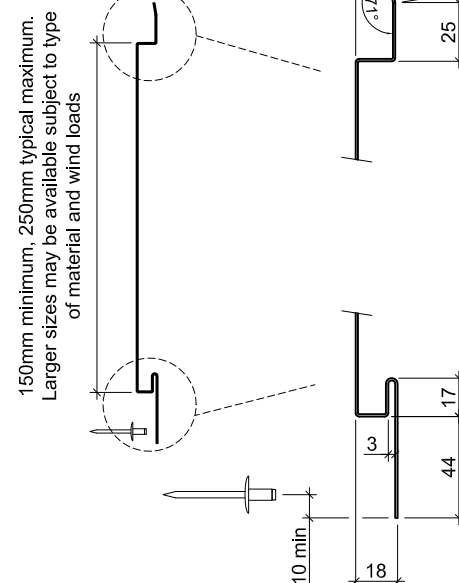
**Condition where top hat  
coincides with vertical panel joint**



**Elevation on Plank**  
(Scales vary)



### Corten Varlant



150mm minimum, 250mm typical maximum.  
Larger sizes may be available subject to type  
of material and wind loads

PVC isolation tape to flange(s) of aluminium section, if required

Benchmark Metallic Interlocking Plank

Benchmark KSAL30-ZED / KSAL30-OMEGA section

Benchmark SVG2540 PVC seal

Benchmark KSAFL6 fasteners at 484mmcr/s subject to applied load

Insect mesh

External drip flashing with sealed joints. Sealed to inner drip flashing

Inner drip flashing

Air Seal - Compressible foam tape

Ground Floor Slab

Benchmark Karrier Panel - Vertically laid  
Thickness to meet U value

Due to additional load from facade, panels must be fixed with a minimum of 2 Nr. fasteners per panel per rail subject to wind loads

Air Seal - Gun grade sealant at male joint

Air Seal - Continuous bead of gun grade sealant

Cladding Rail

PIR Board Insulation

Project:

System: Metallic Interlocking Plank + Karrier Panel

Drawing Title: Drip Detail

Drawn By: BT

Date: 06/08/2015

Drawing N°. MIP Hz KP Vt 002

Rev: 0

Greenfield Business Park No.2  
Greenfield, Holywell  
Flintshire, CH8 7GJ  
Tel: 01352 716 100  
Fax: 01352 710 161

Technical: 0800 970 9036  
Email: technical@kingspanbenchmark.com  
Website: www.kingspanbenchmark.com

**BENCHMARK**

By Kingspan

© Kingspan 2013

This is a generic construction detail. Supporting steelwork member section types and sizes are indicative only. Steelwork is typically provided by the Structural Steelwork Contractor.

PVC isolation tape to flange(s) of aluminium section, if required

Benchmark Metallic Interlocking Plank

Benchmark KSAL30-ZED / KSAL30-OMEGA section

Benchmark SVG2540 PVC seal

Benchmark KSAFL6 fasteners at 484mm cr/s subject to applied load

Insect mesh

External drip flashing with sealed joints. Sealed to inner drip flashing

Inner Drip Flashing

Air Seal - Compressible foam tape

Brickwork

Benchmark Karrier Panel - Vertically laid  
Thickness to meet U value

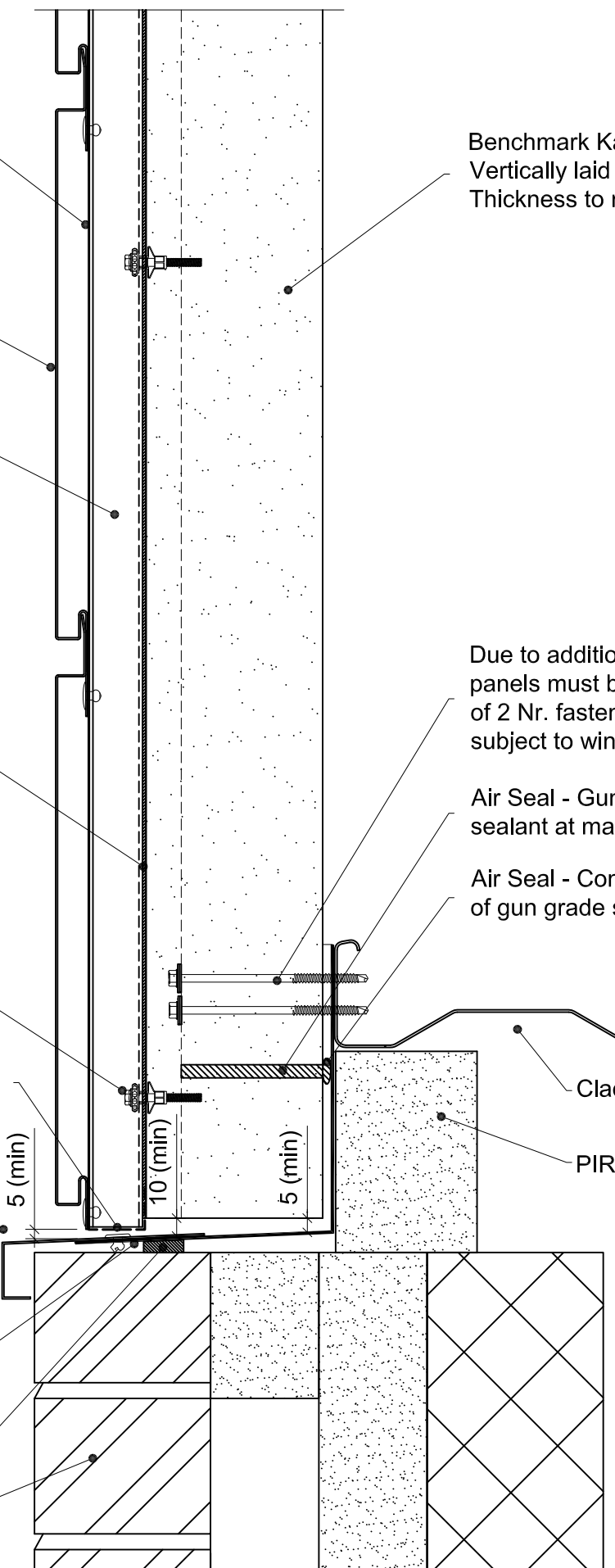
Due to additional load from facade, panels must be fixed with a minimum of 2 Nr. fasteners per panel per rail subject to wind loads

Air Seal - Gun grade sealant at male joint

Air Seal - Continuous bead of gun grade sealant

Cladding Rail

PIR Board Insulation



Project:

System: Metallic Interlocking Plank + Karrier Panel

Drawing Title: Drip Detail

Drawn By: BT

Date: 06/08/2015

Drawing N°: MIP Hz KP Vt 003

Rev: 0

Greenfield Business Park No.2  
Greenfield, Holywell  
Flintshire, CH8 7GJ  
Tel: 01352 716 100  
Fax: 01352 710 161

Technical: 0800 970 9036  
Email: [technical@kingspanbenchmark.com](mailto:technical@kingspanbenchmark.com)  
Website: [www.kingspanbenchmark.com](http://www.kingspanbenchmark.com)

**BENCHMARK**

By Kingspan

© Kingspan 2013

This is a generic construction detail. Supporting steelwork member section types and sizes are indicative only. Steelwork is typically provided by the Structural Steelwork Contractor.

Benchmark Karrier Panel  
Vertically laid  
Thickness to meet U value

PVC isolation tape to flanges  
of omega section if required

Benchmark KSAFL6 fasteners  
at 484mm cr/s subject to  
applied load

Benchmark KSAL30-OMEGA  
section

Benchmark SVG2540 PVC seal

Air Seal - Continuous bead  
of gun grade sealant

Panel fasteners at 500mm  
maximum centers

Benchmark Metallic Interlocking  
Plank External Corner Unit

Benchmark KSAL30-ZED  
section

Internal cleader angle by steelwork  
contractor. Joints sealed with vinyl  
faced butyl rubber tape

Vinyl faced butyl rubber sealing strip

Fire rated canister  
applied insulation

Panel fasteners at  
500mm maximum centers

Air Seal - Continuous bead of gun grade sealant

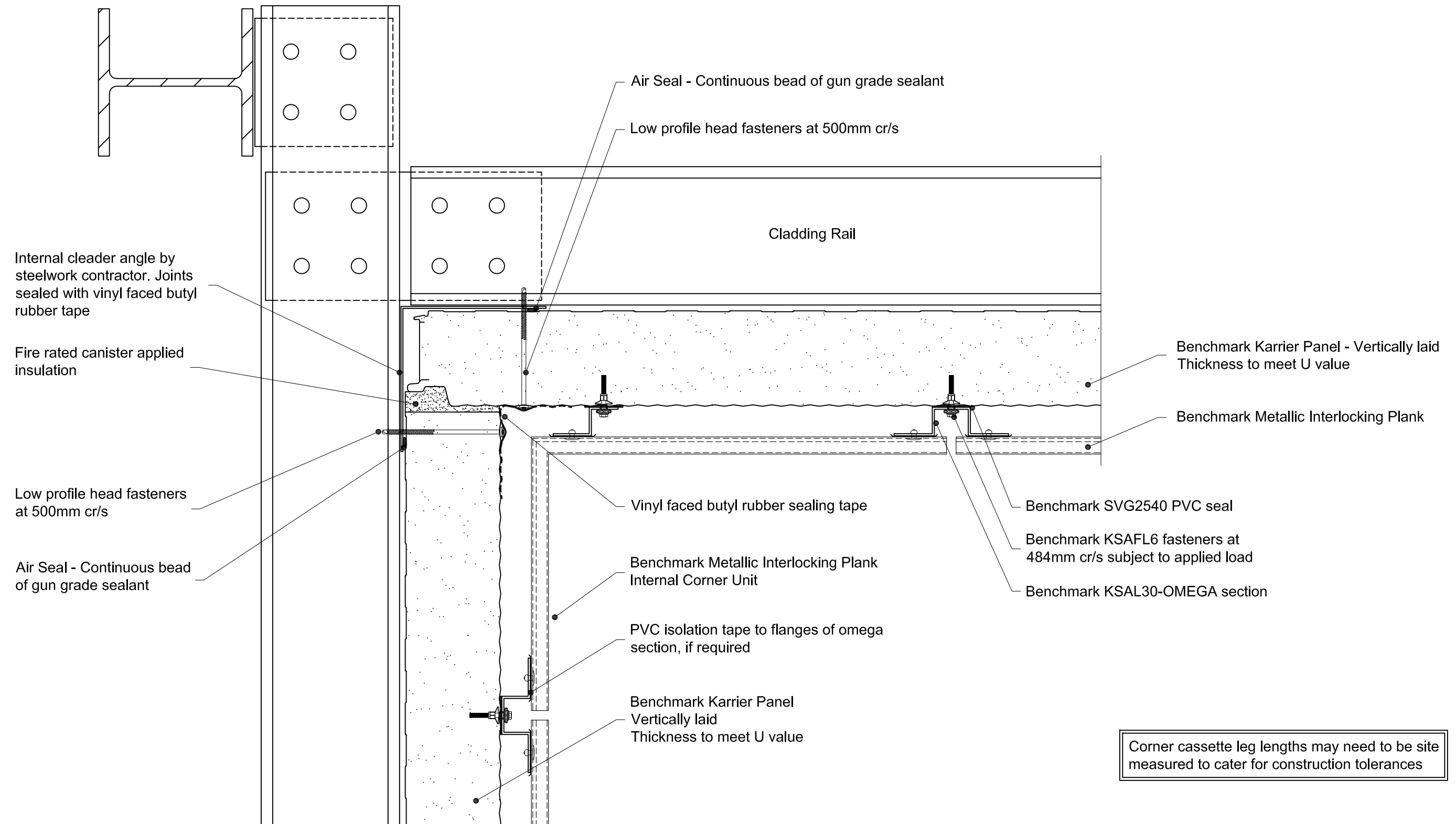
Benchmark Karrier Panel - Vertically laid  
Thickness to meet U value

Benchmark Metallic Interlocking Plank


Corner cassette leg lengths may need to be site  
measured to cater for construction tolerances

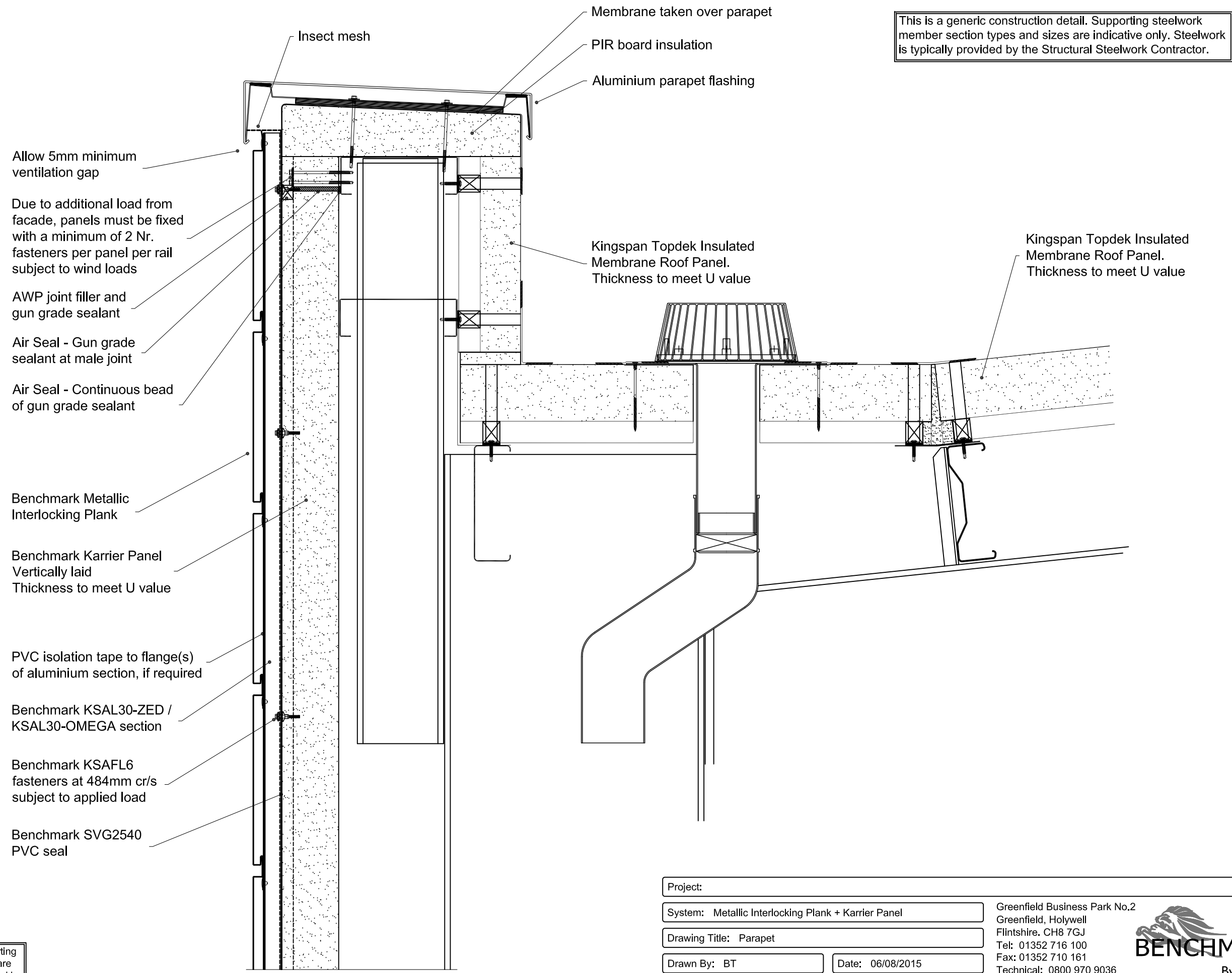
This is a generic construction detail. Supporting  
steelwork member section types and sizes are  
indicative only. Steelwork is typically provided by  
the Structural Steelwork Contractor.

Project:	
System: Metallic Interlocking Plank + Karrier Panel	Greenfield Business Park No.2 Greenfield, Holywell Flintshire, CH8 7GJ Tel: 01352 716 100 Fax: 01352 710 161 Technical: 0800 970 9036 Email: technical@kingspanbenchmark.com Website: www.kingspanbenchmark.com
Drawing Title: External Corner	
Drawn By: BT	Date: 06/08/2015
Drawing N°. MIP Hz KP Vt 004	Rev: 0



This is a generic construction detail. Supporting steelwork member section types and sizes are indicative only. Steelwork is typically provided by the Structural Steelwork Contractor.

Project:			
System:	Metallic Interlocking Plank + Karrier Panel	Greenfield Business Park No.2 Greenfield, Holywell Flintshire, CH8 7GJ Tel: 01352 716 100 Fax: 01352 710 161 Technical: 0800 970 9036 Email: technical@kingspanbenchmark.com Website: www.kingspanbenchmark.com	
Drawing Title:	Internal Corner	 By Kingspan	
Drawn By:	BT	Date:	06/08/2015
Drawing N°:	MIP Hz KP Vt 005	Rev:	0

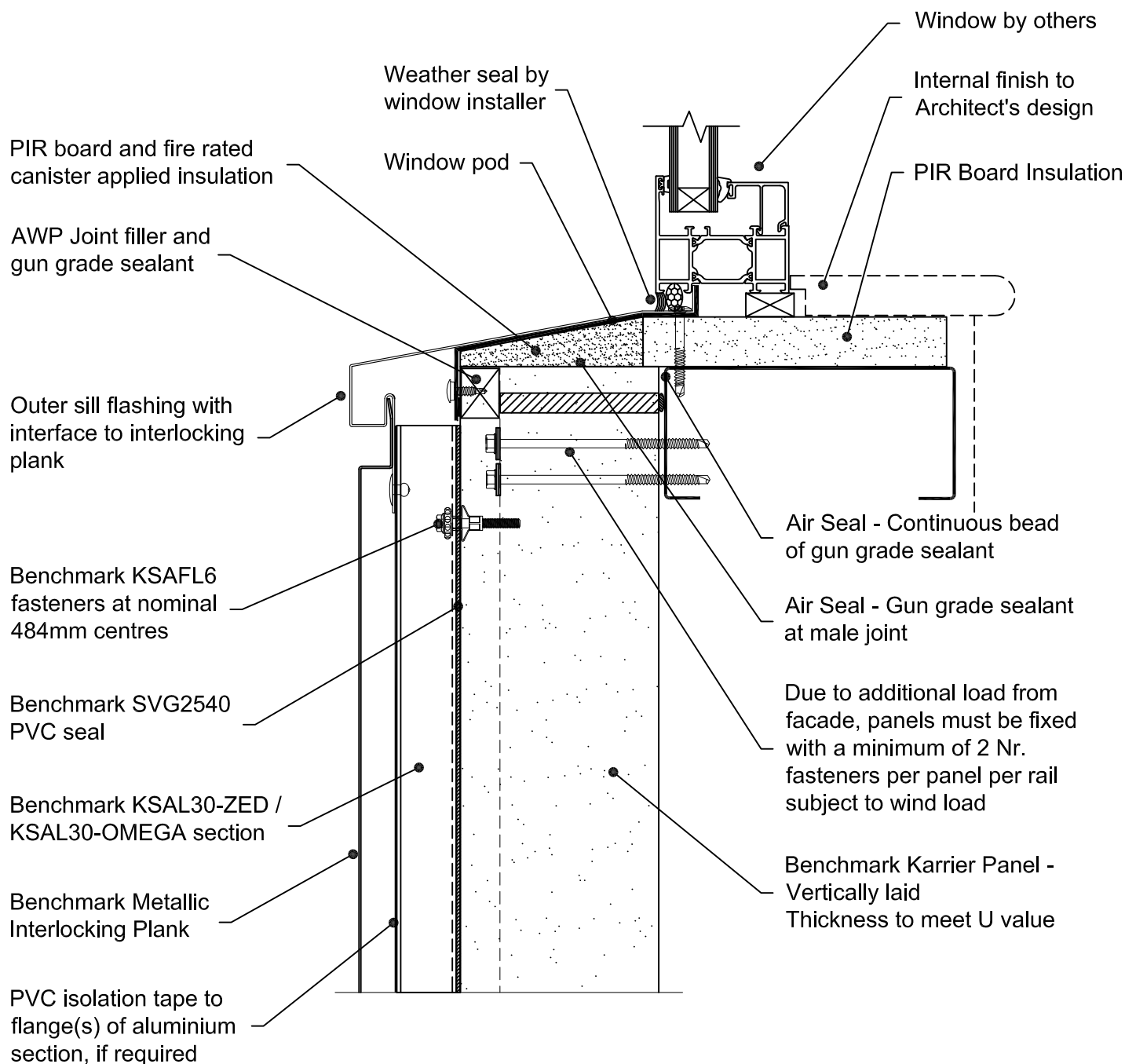


This is a generic construction detail. Supporting steelwork member section types and sizes are indicative only. Steelwork is typically provided by the Structural Steelwork Contractor.

Project:	
System: Metallic Interlocking Plank + Karrier Panel	
Drawing Title: Parapet	
Drawn By: BT	Date: 06/08/2015
Drawing N°. MIP Hz KP Vt 006	Rev: 0

Greenfield Business Park No.2  
Greenfield, Holywell  
Flintshire. CH8 7GJ  
Tel: 01352 716 100  
Fax: 01352 710 161  
Technical: 0800 970 9036  
Email: technical@kingspanbenchmark.com  
Website: www.kingspanbenchmark.com

**BENCHMARK**  
By Kingspan  
© Kingspan 2013



This is a generic construction detail. Supporting (secondary) steelwork member section types and sizes are indicative only. Secondary steelwork is typically provided by the Structural Steelwork Contractor.

Project:

System: Metallic Interlocking Plank + Karrier Panel

Drawing Title: Window Sill

Drawn By: BT

Date: 06/08/2015

Drawing N°. MIP Hz KP Vt 007

Rev: 0

Greenfield Business Park No.2  
Greenfield, Holywell  
Flintshire, CH8 7GJ  
Tel: 01352 716 100  
Fax: 01352 710 161  
Technical: 0800 970 9036

Email: [technical@kingspanbenchmark.com](mailto:technical@kingspanbenchmark.com)  
Website: [www.kingspanbenchmark.com](http://www.kingspanbenchmark.com)

**BENCHMARK**

By Kingspan

© Kingspan 2013

0 100mm

PVC isolation tape to flange(s) of aluminium section, if required

Benchmark Metallic Interlocking Plank

Benchmark KSAL30-ZED / KSAL30-OMEGA section

Benchmark SVG2540 PVC seal

Benchmark KSAFL6 fasteners at 484mm cr/s subject to applied load

Notch aluminium section around window pod unit as required

Insect mesh

Outer drip trim

5 (min)

Fire rated canister applied insulation

External window pod

Weather seal by window installer

Gun grade butyl rubber sealant taken across panel joint

Benchmark Karrier Panel - Vertically laid. Thickness to meet U value

Air Seal - Gun grade sealant at male joint

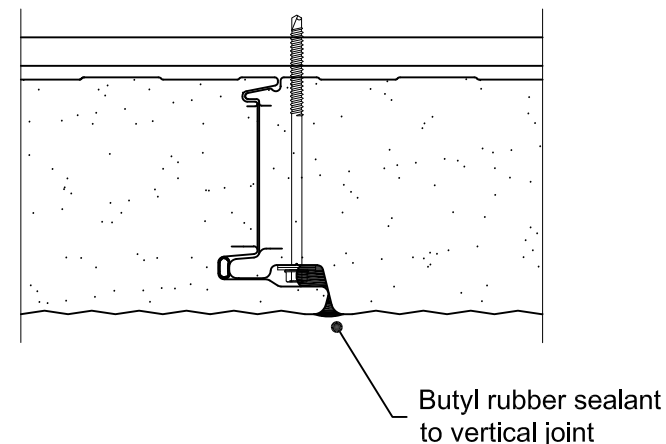
Air Seal - Continuous bead of gun grade sealant

Due to additional load from facade, panels must be fixed with a minimum of 2 Nr. fasteners per panel per rail subject to wind load

PIR board insulation

Internal finish to Architect's design

Window by others



**Vertical Joint Detail at Window Head**

This is a generic construction detail. Supporting (secondary) steelwork member section types and sizes are indicative only. Secondary steelwork is typically provided by the Structural Steelwork Contractor.

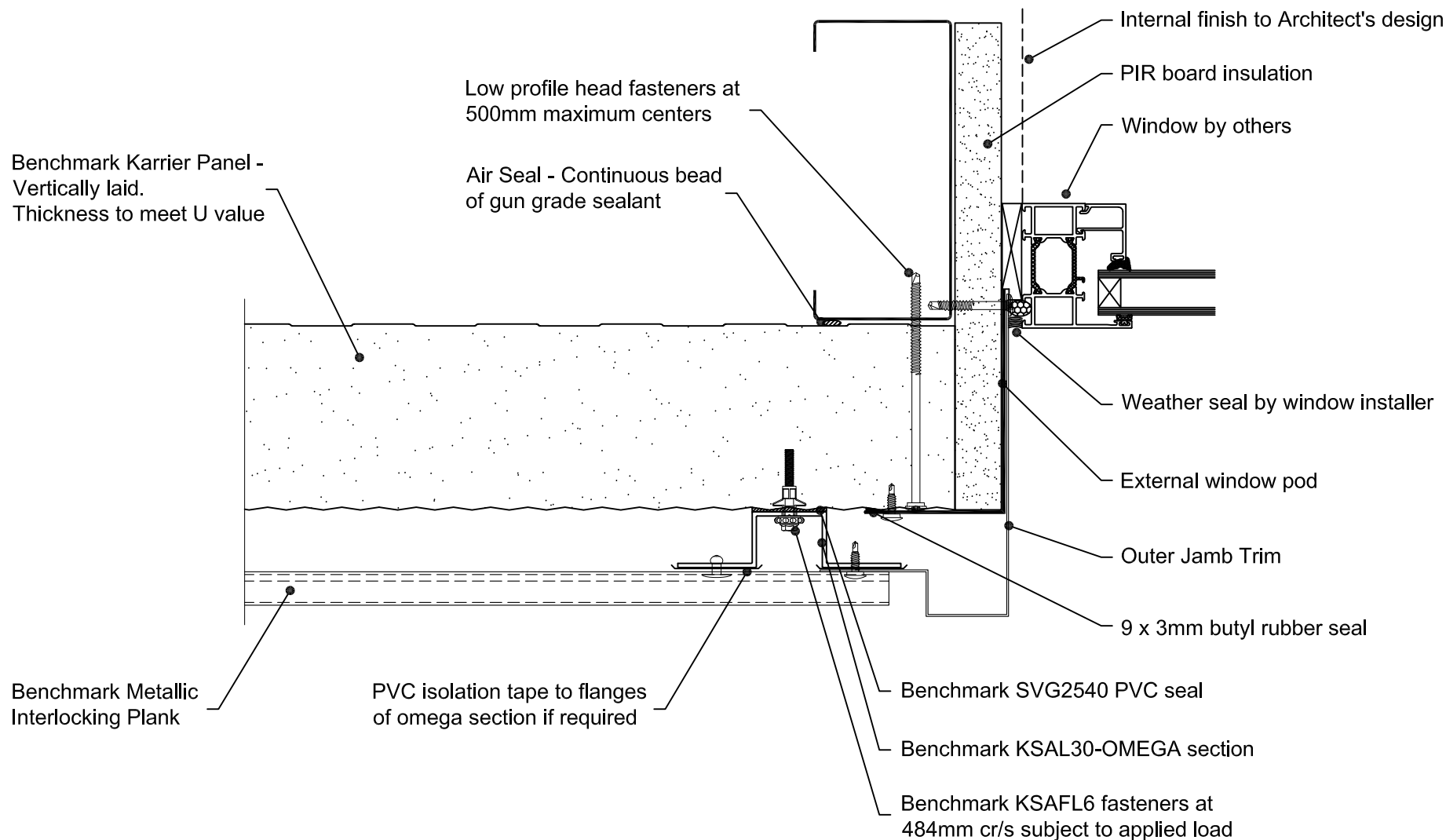
**Note**  
Vertical panel joints above window pod to be sealed with butyl rubber sealant (see detail).

Project:	
System:	Metallic Interlocking Plank + KP
Drawing Title:	Window Head
Drawn By:	BT
Date:	06/08/2015
Drawing N°:	MIP Hz KP Vt 008
Rev:	0

Greenfield Business Park No.2  
Greenfield, Holywell  
Flintshire, CH8 7GJ  
Tel: 01352 716 100  
Fax: 01352 710 161  
Technical: 0800 970 9036  
Email: [technical@kingspanbenchmark.com](mailto:technical@kingspanbenchmark.com)  
Website: [www.kingspanbenchmark.com](http://www.kingspanbenchmark.com)

**BENCHMARK**  
By Kingspan  
© Kingspan 2013





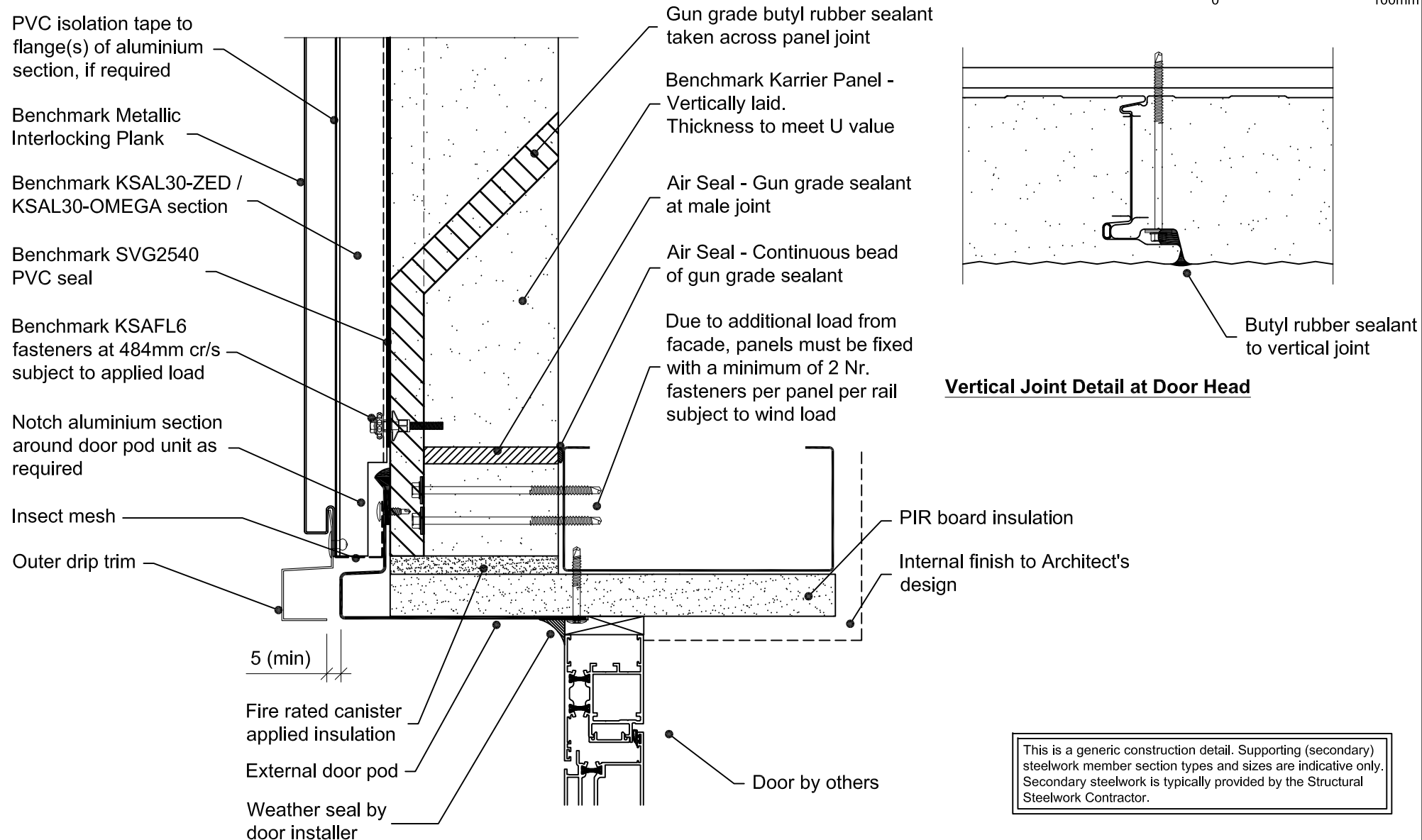
This is a generic construction detail. Supporting (secondary) steelwork member section types and sizes are indicative only. Secondary steelwork is typically provided by the Structural Steelwork Contractor.

Project:	
System: Metallic Interlocking Plank + KP	
Drawing Title: Window Jamb	
Drawn By: BT	Date: 06/08/2015
Drawing N°. MIP Hz KP Vt 009	Rev: 0

Greenfield Business Park No.2  
Greenfield, Holywell  
Flintshire, CH8 7GJ  
Tel: 01352 716 100  
Fax: 01352 710 161  
Technical: 0800 970 9036  
Email: [technical@kingspanbenchmark.com](mailto:technical@kingspanbenchmark.com)  
Website: [www.kingspanbenchmark.com](http://www.kingspanbenchmark.com)

**BENCHMARK**  
By Kingspan  
© Kingspan 2013

0 100mm



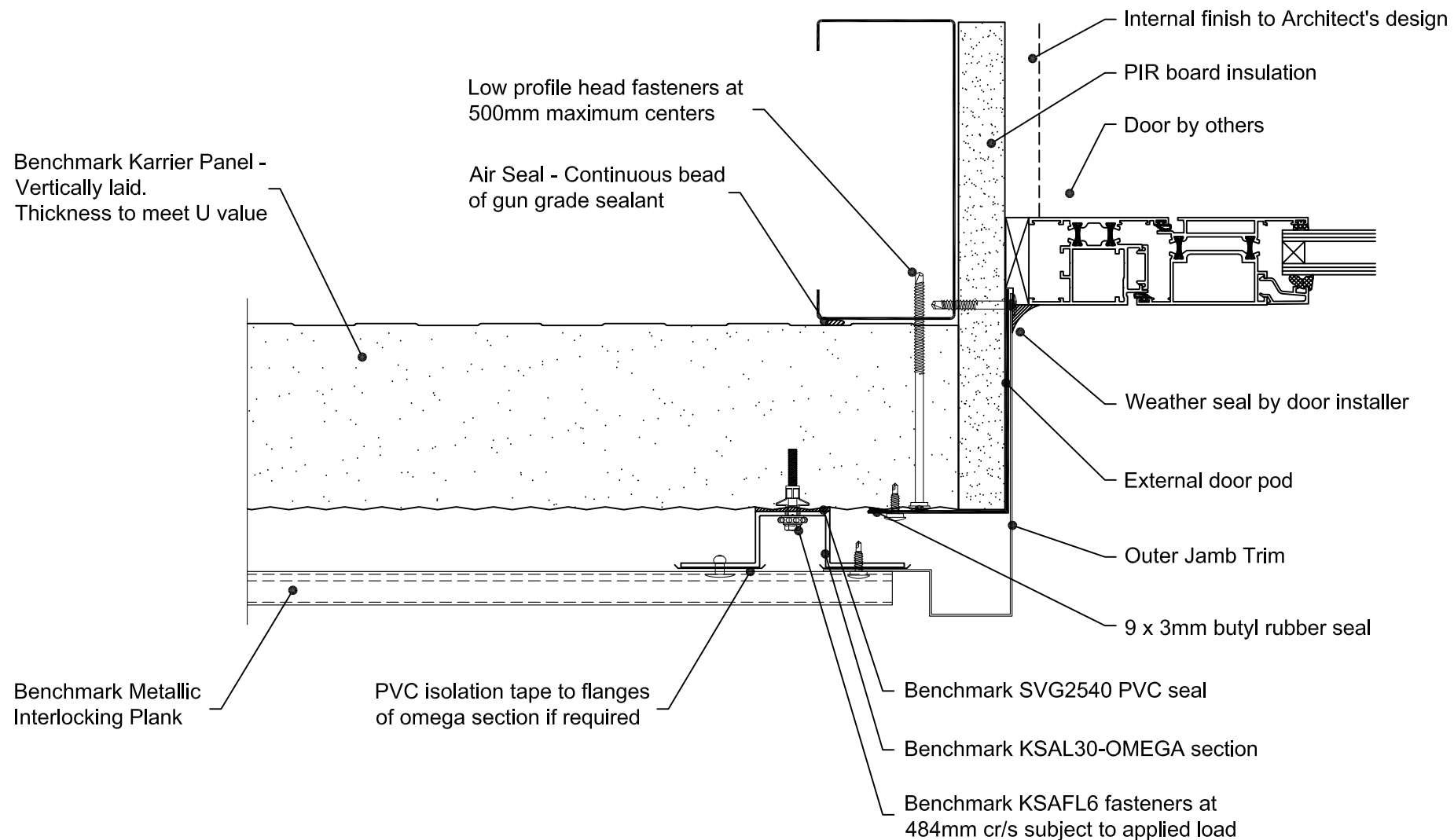
This is a generic construction detail. Supporting (secondary) steelwork member section types and sizes are indicative only. Secondary steelwork is typically provided by the Structural Steelwork Contractor.

**Note**  
Vertical panel joints above door pod to be sealed with butyl rubber sealant (see detail).

Project:			
System: Metallic Interlocking Plank + KP			
Drawing Title: Door Head			
Drawn By: BT	Date: 06/08/2015		
Drawing N°. MIP Hz KP V1 010	Rev: 0		

Greenfield Business Park No.2  
Greenfield, Holywell  
Flintshire, CH8 7GJ  
Tel: 01352 716 100  
Fax: 01352 710 161  
Technical: 0800 970 9036  
Email: [technical@kingspanbenchmark.com](mailto:technical@kingspanbenchmark.com)  
Website: [www.kingspanbenchmark.com](http://www.kingspanbenchmark.com)

**BENCHMARK**  
By Kingspan  
© Kingspan 2013



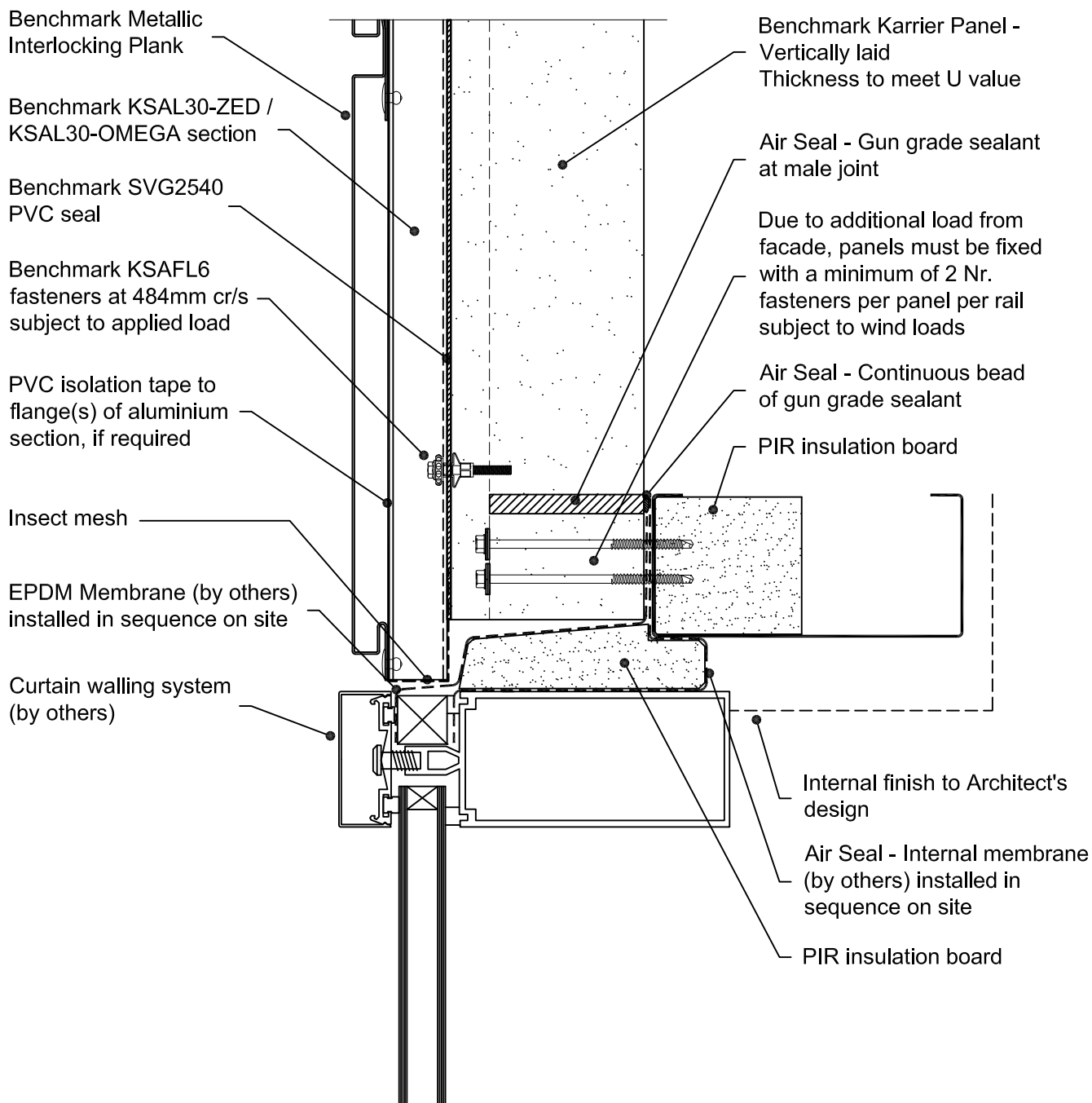
This is a generic construction detail. Supporting (secondary) steelwork member section types and sizes are indicative only. Secondary steelwork is typically provided by the Structural Steelwork Contractor.

Project:	
System:	Metallic Interlocking Plank + KP
Drawing Title:	Door Jamb
Drawn By:	BT
Date:	06/08/2015
Drawing N°:	MIP Hz KP Vt 011
Rev:	0
Greenfield Business Park No.2 Greenfield, Holywell Flintshire, CH8 7GJ Tel: 01352 716 100 Fax: 01352 710 161 Technical: 0800 970 9036 Email: <a href="mailto:technical@kingspanbenchmark.com">technical@kingspanbenchmark.com</a> Website: <a href="http://www.kingspanbenchmark.com">www.kingspanbenchmark.com</a>	



By Kingspan

© Kingspan 2013



This is a generic construction detail. Supporting (secondary) steelwork member section types and sizes are indicative only. Secondary steelwork is typically provided by the Structural Steelwork Contractor.

Project:

System: Metallic Interlocking Plank + Karrier Panel

Drawing Title: Curtain Wall Head

Drawn By: BT

Date: 06/08/2015

Drawing N°: MIP Hz KP Vt 012

Rev: 0

Greenfield Business Park No.2  
Greenfield, Holywell  
Flintshire, CH8 7GJ

Tel: 01352 716 100

Fax: 01352 710 161

Technical: 0800 970 9036

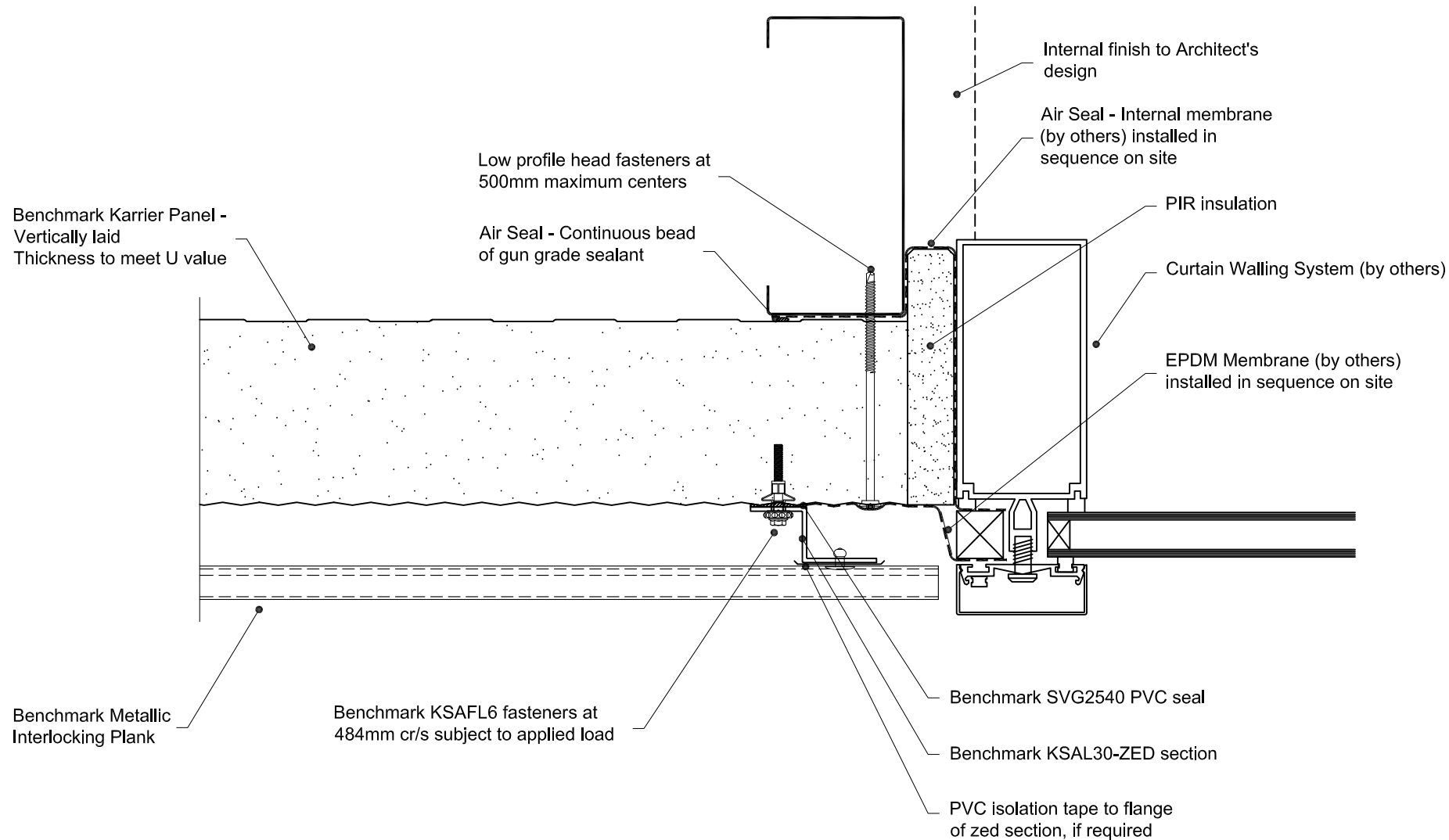
Email: [technical@kingspanbenchmark.com](mailto:technical@kingspanbenchmark.com)

Website: [www.kingspanbenchmark.com](http://www.kingspanbenchmark.com)

**BENCHMARK**

By Kingspan

© Kingspan 2013



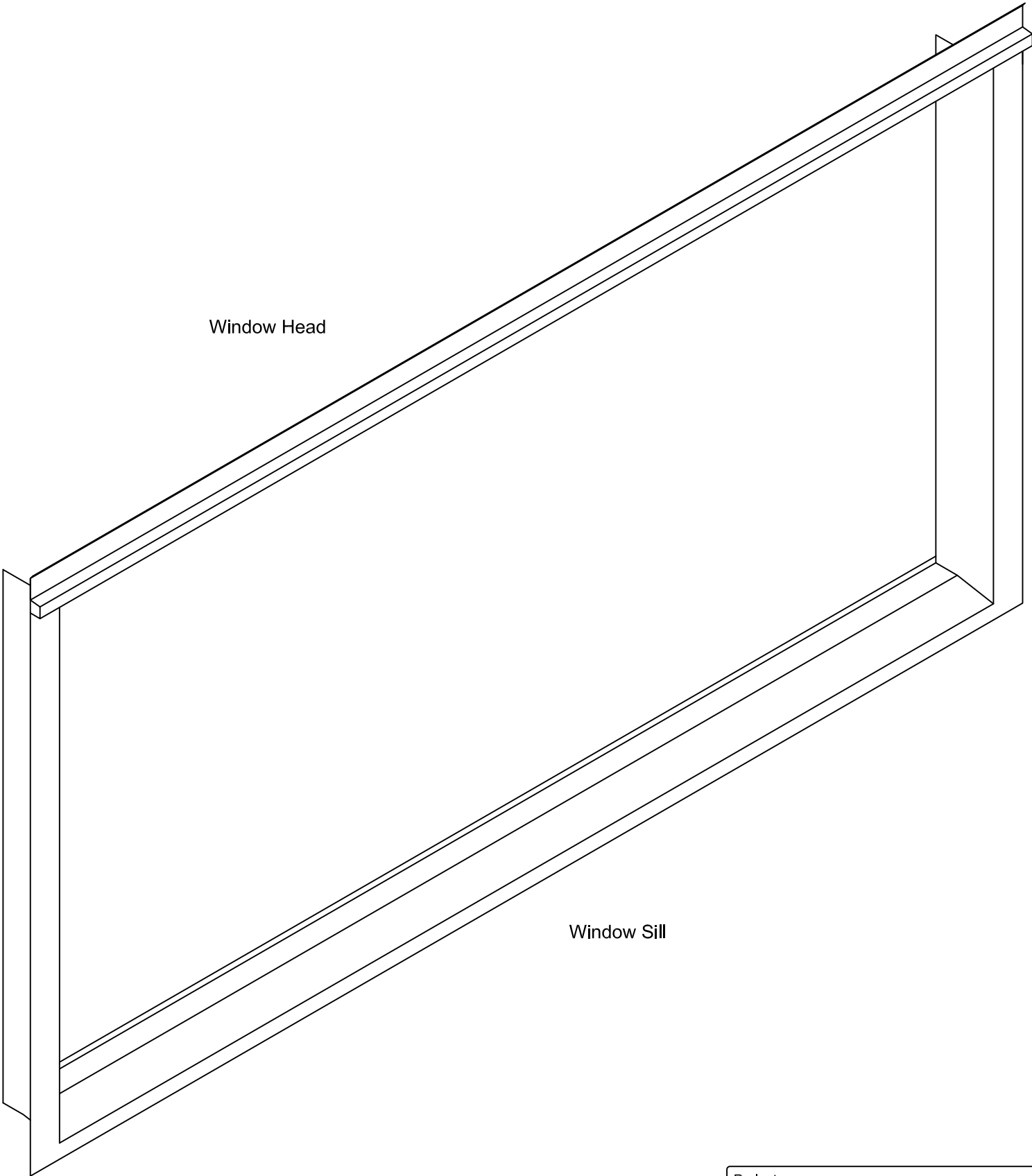
This is a generic construction detail. Supporting (secondary) steelwork member section types and sizes are indicative only. Secondary steelwork is typically provided by the Structural Steelwork Contractor.

Project:		Greenfield Business Park No.2	
System: Metallic Interlocking Plank + KP		Greenfield, Holywell	
Drawing Title: Curtain Wall Jamb		Flintshire, CH8 7GJ	
Drawn By: BT		Tel: 01352 716 100	
Date: 06/08/2015		Fax: 01352 710 161	
Drawing N°. MIP Hz KP Vt 013		Technical: 0800 970 9036	
Rev: 0		Email: technical@kingspanbenchmark.com	
		Website: www.kingspanbenchmark.com	



By Kingspan

© Kingspan 2013



Window Head

Window Jamb

Window Sill

Generic only - component profile  
and dimensions are tailored to suit  
specific application

Project:

System: Metallic Interlocking Plank + Karrier Panel

Drawing Title: Window Pod - Generic

Drawn By: BT

Date: 06/08/2015

Drawing N°. MIP Hz KP Vt 014

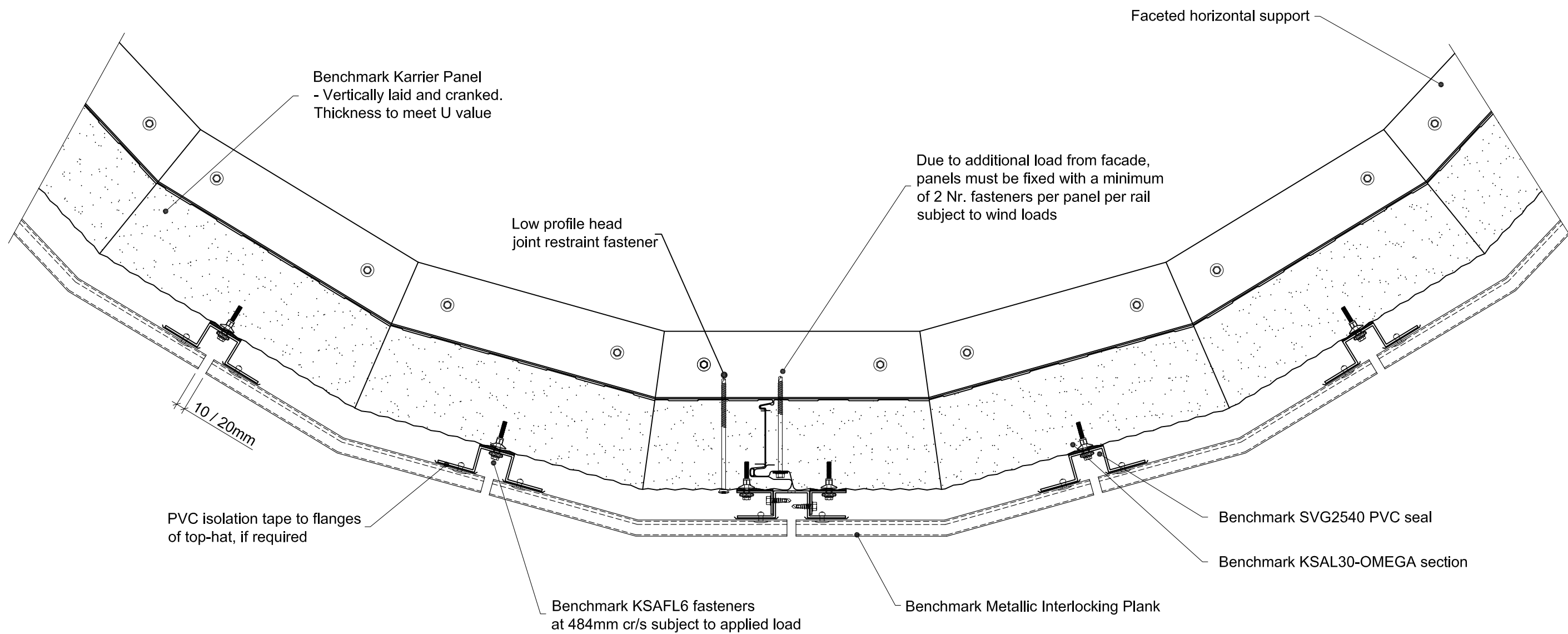
Rev: 0


Greenfield Business Park No.2  
Greenfield, Holywell  
Flintshire. CH8 7GJ  
Tel: 01352 716 100  
Fax: 01352 710 161  
Technical: 0800 970 9036  
Email: [technical@kingspanbenchmark.com](mailto:technical@kingspanbenchmark.com)  
Website: [www.kingspanbenchmark.com](http://www.kingspanbenchmark.com)

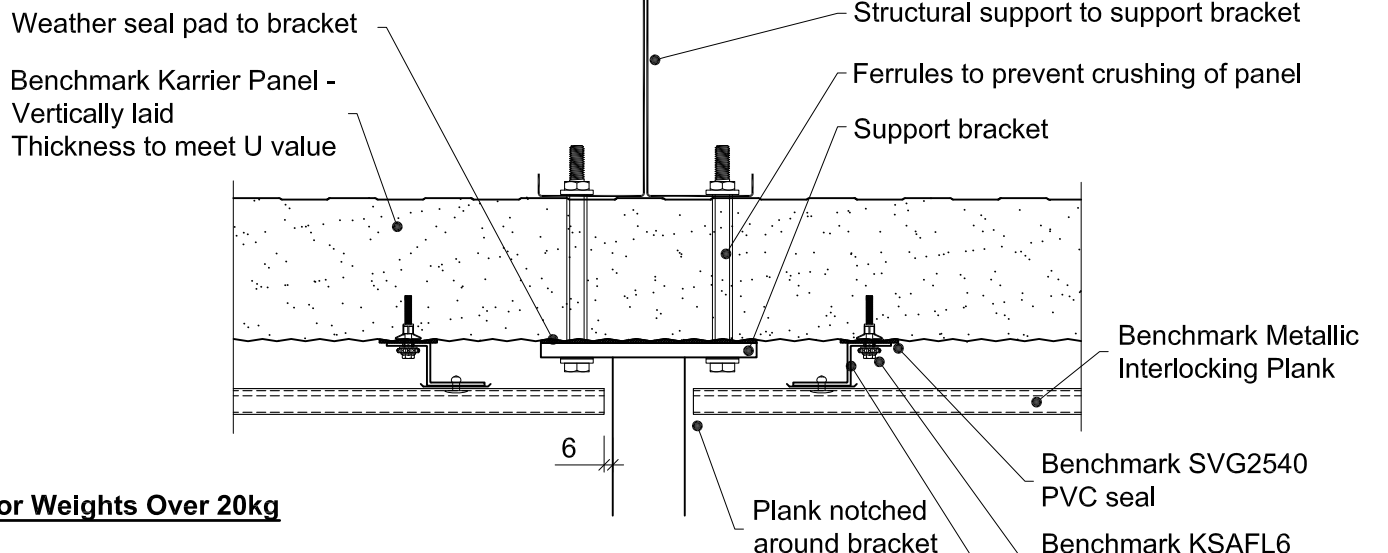


By Kingspan

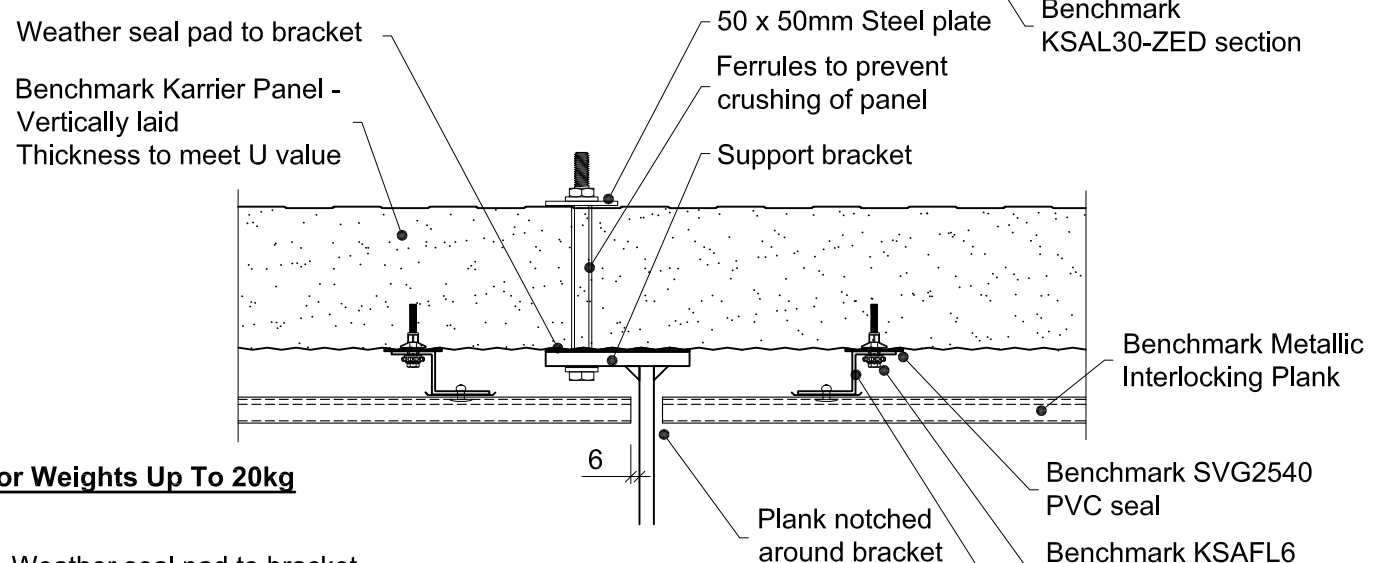
© Kingspan 2013



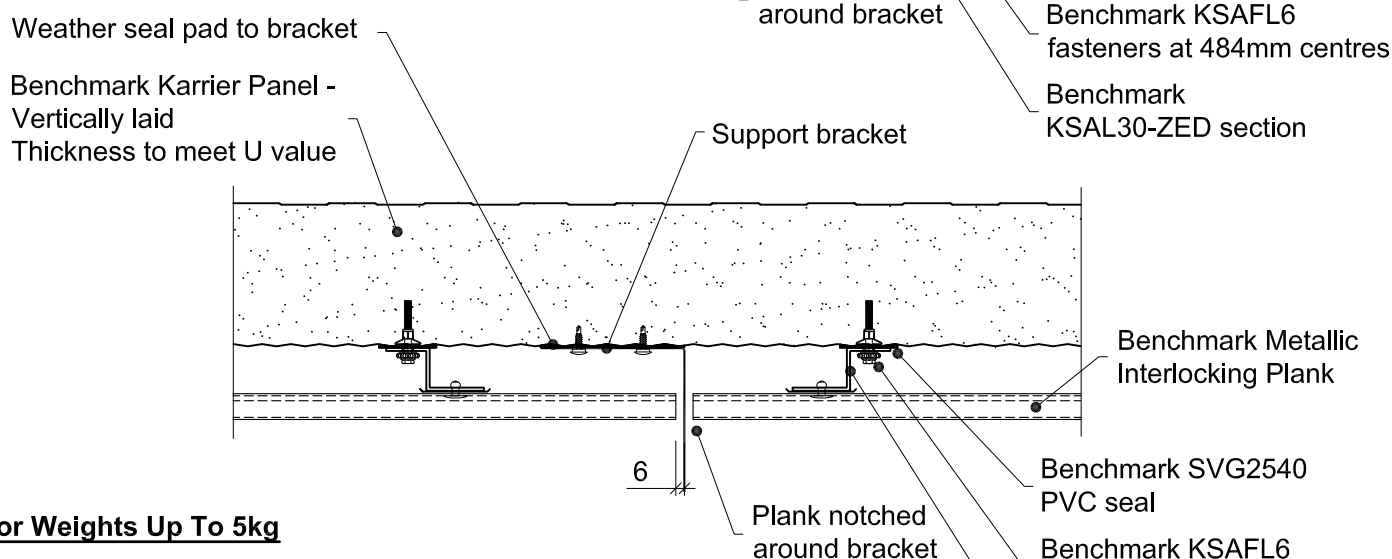
Project:		Greenfield Business Park No.2 Greenfield, Holywell Flintshire. CH8 7GJ Tel: 01352 716 100 Fax: 01352 710 161 Technical: 0800 970 9036 Email: technical@kingspanbenchmark.com Website: www.kingspanbenchmark.com	
System: Metallic Interlocking Plank + Karrier Panel		 By Kingspan © Kingspan 2013	
Drawing Title: Faceted Wall			
Drawn By: BT	Date: 06/08/2015		
Drawing N°. MIP Hz KP Vt 015	Rev: 0		



### For Weights Over 20kg




### For Weights Up To 20kg

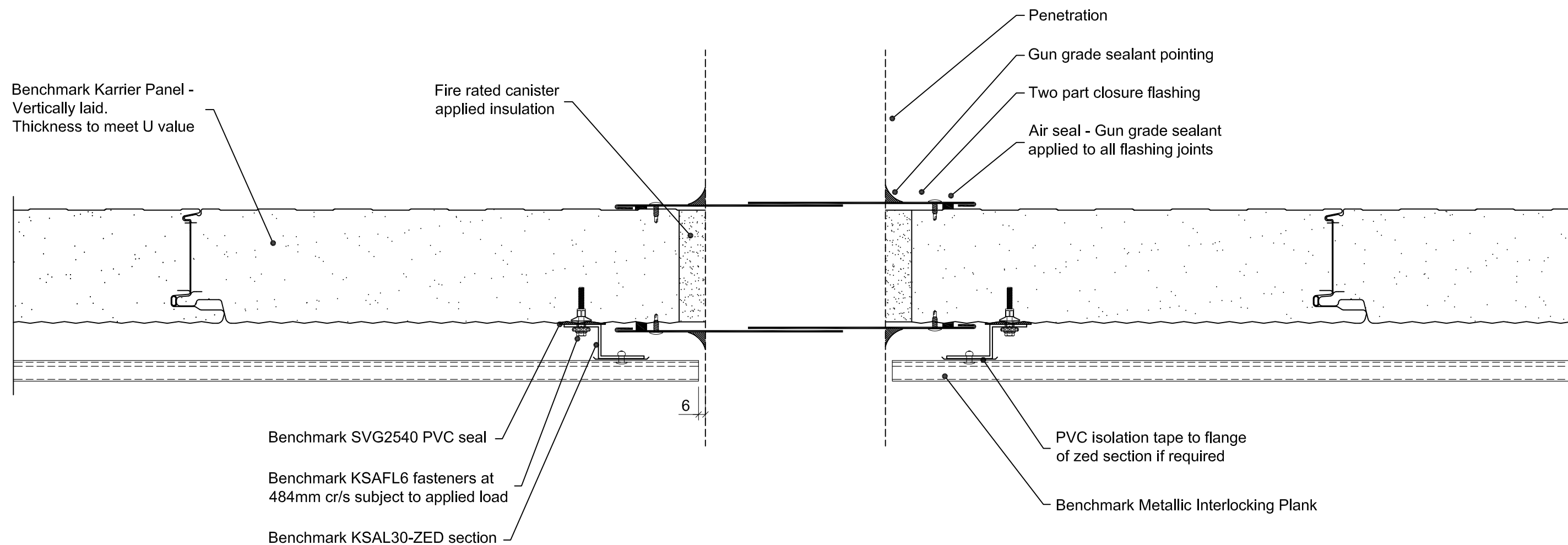


### For Weights Up To 5kg

### Longitudinal Sections Through Elevation

Project:		Greenfield Business Park No.2 Greenfield, Holywell Flintshire, CH8 7GJ Tel: 01352 716 100 Fax: 01352 710 161 Technical: 0800 970 9036 Email: <a href="mailto:technical@kingspanbenchmark.com">technical@kingspanbenchmark.com</a> Website: <a href="http://www.kingspanbenchmark.com">www.kingspanbenchmark.com</a>	
System: Metallic Interlocking Plank + Karrier Panel		 By Kingspan © Kingspan 2013	
Drawing Title: Signage, Brts Solell and Support Brackets			
Drawn By: BT			
Date: 06/08/2015			
Drawing N°. MIP Hz KP Vt 016		Rev: 0	

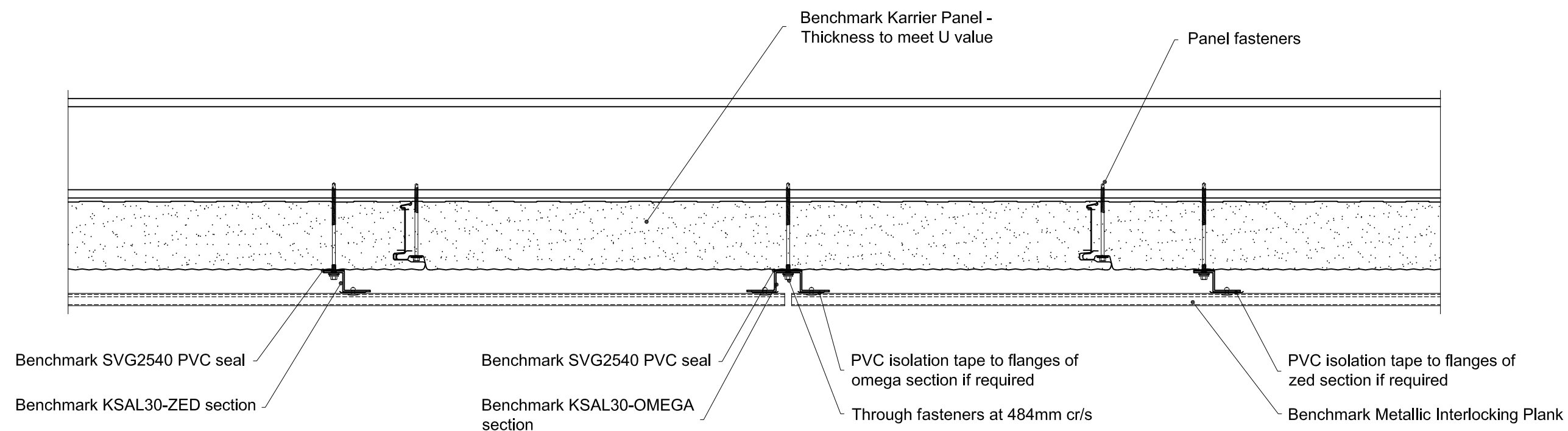




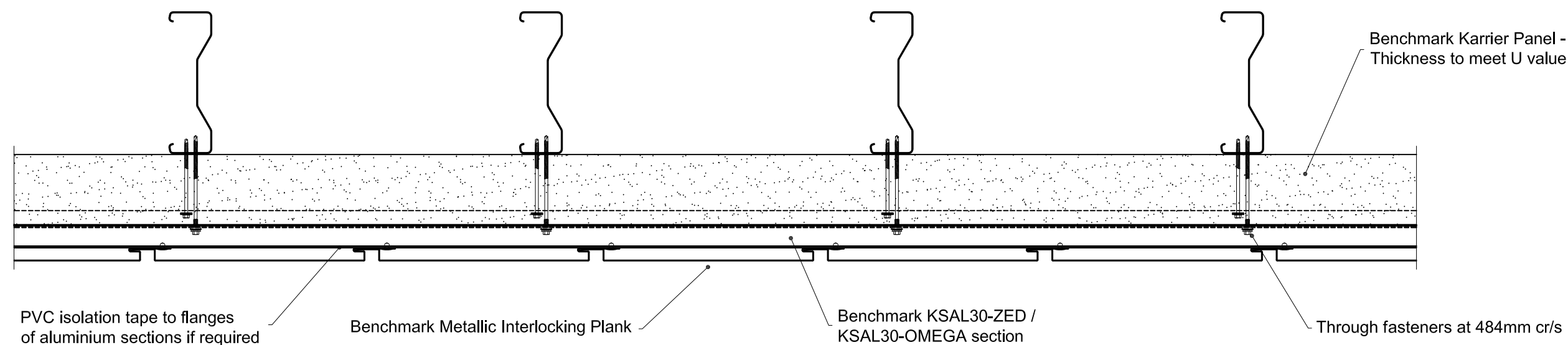
## Longitudinal Section Through Elevation

Any penetration must be a minimum of 100mm from the joint in the Karrier Panel.  
Maximum penetration size of 300mm without structural trimmers to support Karrier Panel.

Project:	
System: Metallic Interlocking Plank + Karrier Panel	Greenfield Business Park No.2 Greenfield, Holywell Flintshire, CH8 7GJ Tel: 01352 716 100 Fax: 01352 710 161 Technical: 0800 970 9036 Email: technical@kingspanbenchmark.com Website: www.kingspanbenchmark.com
Drawing Title: Penetrations	
Drawn By: BT	Date: 06/08/2015
Drawing N°. MIP Hz KP Vt 017	Rev: 0



## CROSS SECTION THROUGH



## LONGITUDINAL SECTION THROUGH

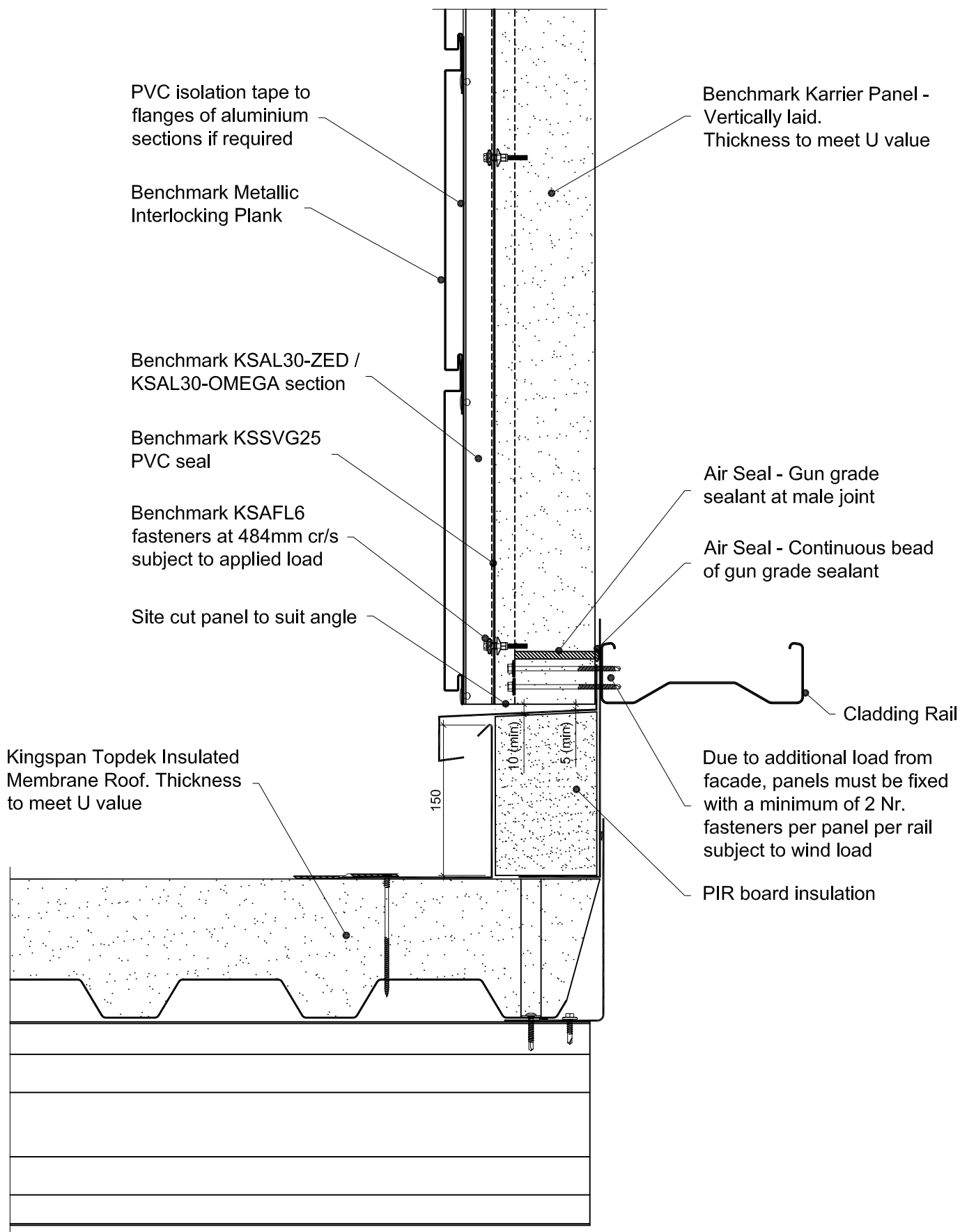
This is a generic construction detail. Supporting (secondary) steelwork member section types and sizes are indicative only. Secondary steelwork is typically provided by the Structural Steelwork Contractor.

Project:	
System: Metallic Interlocking Plank + Karrier Panel	Greenfield Business Park No.2 Greenfield, Holywell Flintshire. CH8 7GJ Tel: 01352 716 100 Fax: 01352 710 161 Technical: 0800 970 9036 Email: <a href="mailto:technical@kingspanbenchmark.com">technical@kingspanbenchmark.com</a> Website: <a href="http://www.kingspanbenchmark.com">www.kingspanbenchmark.com</a>
Drawing Title: Soffit Details	
Drawn By: BT	Date: 06/08/2015
Drawing N°. MIP Hz KP Vt 018	Rev: 0



By Kingspan

© Kingspan 2013



This is a generic construction detail. Supporting steelwork member section types and sizes are indicative only. Steelwork is typically provided by the Structural Steelwork Contractor.

Project:

System: Metallic Interlocking Plank + Karrier Panel

Drawing Title: Spandrel Detail

Drawn By: BT

Date: 06/08/2015

Drawing N°: MIP Hz KP Vt 019

Rev: 0

Greenfield Business Park No.2  
Greenfield, Holywell  
Flintshire. CH8 7GJ

Tel: 01352 716 100

Fax: 01352 710 161

Technical: 0800 970 9036

Email: [technical@kingspanbenchmark.com](mailto:technical@kingspanbenchmark.com)

Website: [www.kingspanbenchmark.com](http://www.kingspanbenchmark.com)

**BENCHMARK**

By Kingspan

© Kingspan 2013

PVC isolation tape to flange(s) of aluminium section, if required

Benchmark Corten Interlocking Plank

Benchmark KSAL30-ZED / KSAL30-OMEGA section

Benchmark SVG2540 PVC seal

Benchmark KSAFL6 fasteners at 484mm cr/s subject to applied load

Insect mesh

External drip flashing with sealed joints. Sealed to inner drip flashing

Inner drip flashing

Air Seal - Compressible foam tape

Benchmark Karrier Panel - Vertically laid  
Thickness to meet U value

Air Seal - Gun grade sealant at male joint

Air Seal - Continuous bead of gun grade sealant

Due to additional load from facade, panels must be fixed with a minimum of 2 Nr. fasteners per panel per rail subject to wind loads

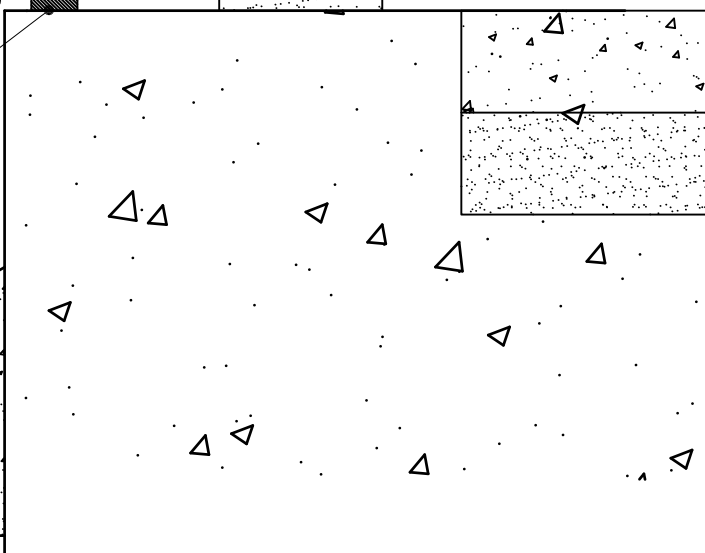
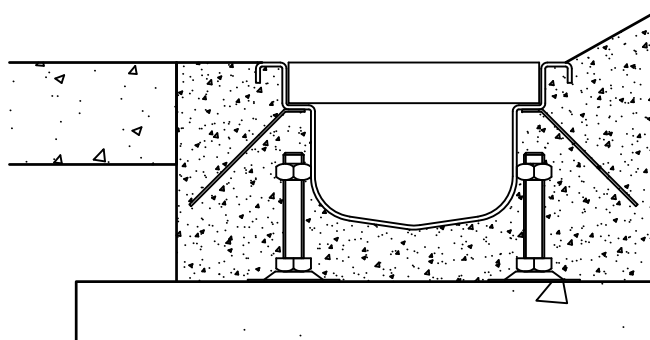
Cladding rail

PIR board insulation

5 (min)

10 (min)

5 (min)



This is a generic construction detail. Supporting steelwork member section types and sizes are indicative only. Steelwork is typically provided by the Structural Steelwork Contractor.

Project:

System: Metallic Interlocking Plank + Karrier Panel

Drawing Title: Drip Detail - Corten

Drawn By: BT

Date: 06/08/2015

Drawing N°: MIP Hz KP Vt 020

Rev: 0

Greenfield Business Park No.2  
Greenfield, Holywell  
Flintshire, CH8 7GJ

Tel: 01352 716 100

Fax: 01352 710 161

Technical: 0800 970 9036

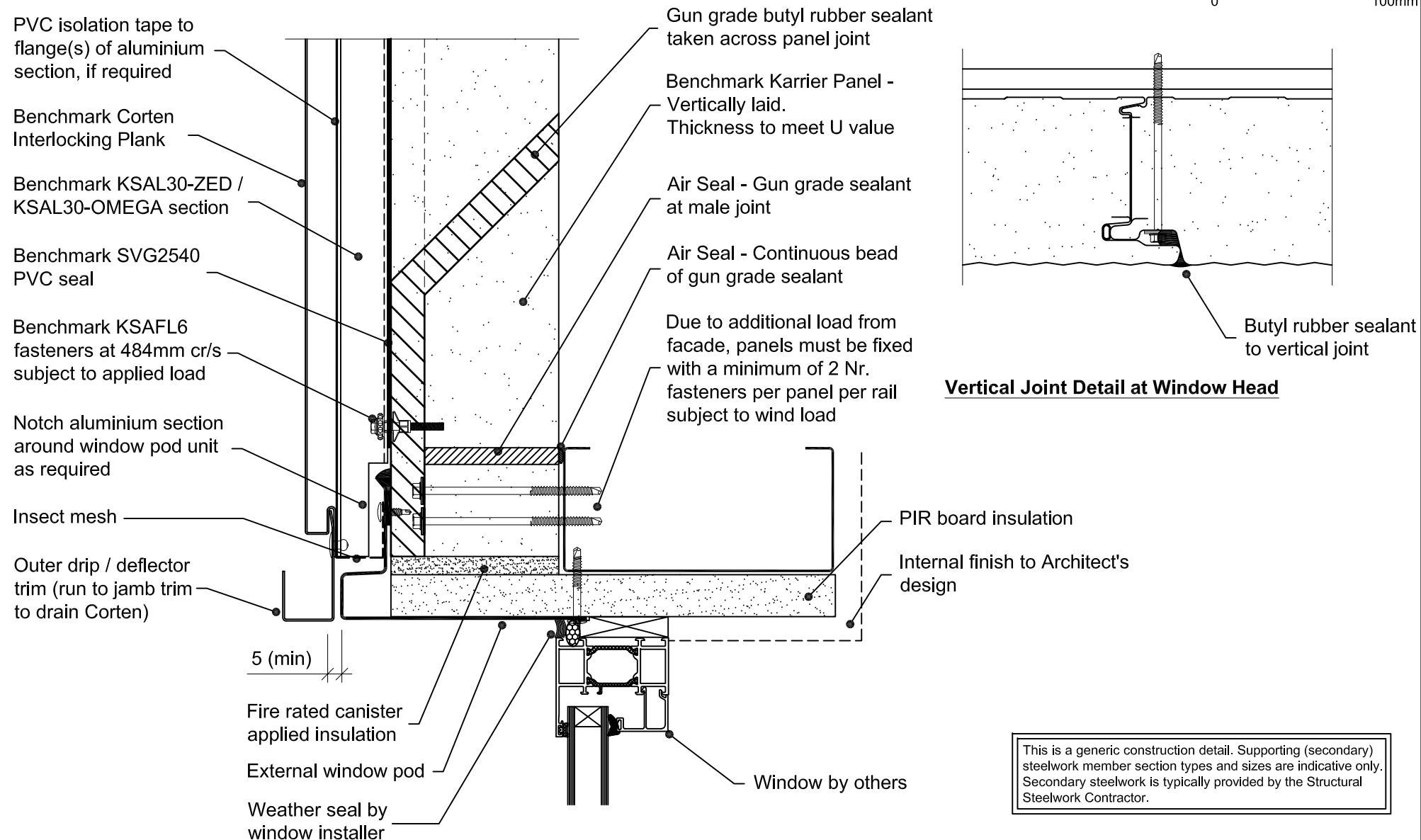
Email: [technical@kingspanbenchmark.com](mailto:technical@kingspanbenchmark.com)

Website: [www.kingspanbenchmark.com](http://www.kingspanbenchmark.com)

**BENCHMARK**

By Kingspan

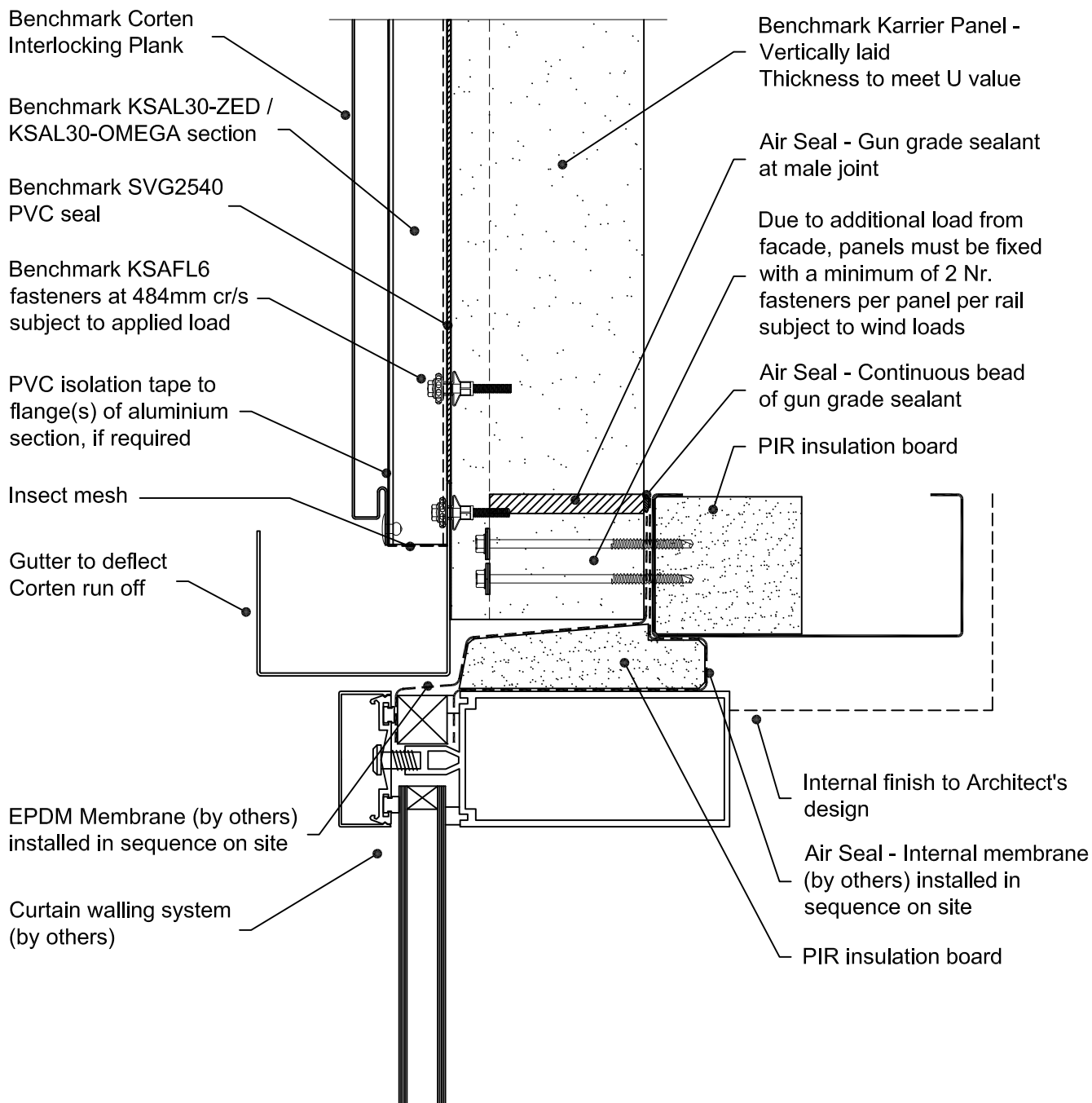
© Kingspan 2013



This is a generic construction detail. Supporting (secondary) steelwork member section types and sizes are indicative only. Secondary steelwork is typically provided by the Structural Steelwork Contractor.

**Note**  
Vertical panel joints above window pod to be sealed with butyl rubber sealant (see detail).

Project:	
System:	Metallic Interlocking Plank + KP
Drawing Title:	Window Head - Corten
Drawn By:	AE
Date:	06/08/2015
Drawing N°:	MIP Hz KP Vt 021
Rev:	0
<p>Greenfield Business Park No.2 Greenfield, Holywell Flintshire, CH8 7GJ Tel: 01352 716 100 Fax: 01352 710 161 Technical: 0800 970 9036 Email: <a href="mailto:technical@kingspanbenchmark.com">technical@kingspanbenchmark.com</a> Website: <a href="http://www.kingspanbenchmark.com">www.kingspanbenchmark.com</a></p> <p><b>BENCHMARK</b> By Kingspan © Kingspan 2013</p>	



This is a generic construction detail. Supporting (secondary) steelwork member section types and sizes are indicative only. Secondary steelwork is typically provided by the Structural Steelwork Contractor.

Project:

System: Metallic Interlocking Plank + Karrier Panel

Drawing Title: Curtain Wall Head - Corten

Drawn By: AE

Date: 06/08/2015

Drawing N°: MIP Hz KP Vt 022

Rev: 0

Greenfield Business Park No.2  
Greenfield, Holywell  
Flintshire, CH8 7GJ  
Tel: 01352 716 100  
Fax: 01352 710 161

Technical: 0800 970 9036  
Email: [technical@kingspanbenchmark.com](mailto:technical@kingspanbenchmark.com)  
Website: [www.kingspanbenchmark.com](http://www.kingspanbenchmark.com)



By Kingspan

© Kingspan 2013

Benchmark Corten  
Interlocking Plank

0 100mm

PVC isolation tape to  
flange(s) of aluminium  
section, if required

Benchmark KSAL30-ZED /  
KSAL30-OMEGA section

Benchmark SVG2540  
PVC seal

Benchmark KSAFL6  
fasteners at 484mm cr/s  
subject to applied load

Benchmark KSAFL6  
fasteners at 484mm cr/s  
subject to applied load

Insect mesh

Gutter to deflect  
Corten run off

Closure trim

Benchmark KSAFL6  
fasteners at 484mm cr/s  
subject to applied load

Benchmark PPC Aluminium  
Interlocking Plank

Benchmark KSAL30-ZED /  
KSAL30-OMEGA section

Benchmark Karrier Panel -  
Vertically laid.  
Thickness to meet U value

Project:

System: Metallic Interlocking Plank + Karrier Panel

Drawing Title: Corten to Aluminium - Horizontal Interface

Drawn By: AE

Date: 06/08/2015

Drawing N°: MIP Hz KP Vt 023

Rev: 0

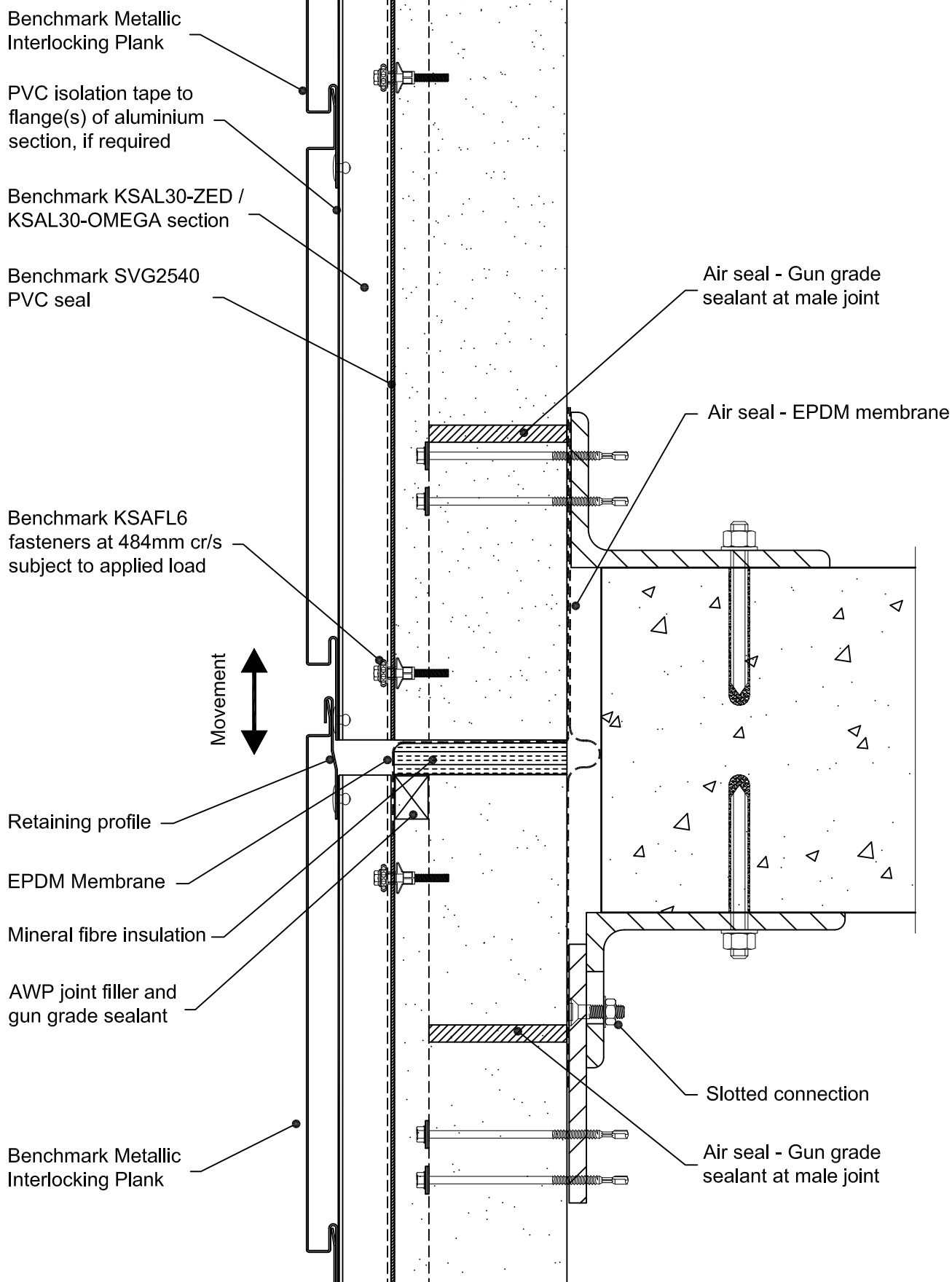
Greenfield Business Park No.2  
Greenfield, Holywell  
Flintshire, CH8 7GJ  
Tel: 01352 716 100  
Fax: 01352 710 161

Technical: 0800 970 9036  
Email: [technical@kingspanbenchmark.com](mailto:technical@kingspanbenchmark.com)  
Website: [www.kingspanbenchmark.com](http://www.kingspanbenchmark.com)

**BENCHMARK**

By Kingspan

© Kingspan 2013



This is a generic construction detail. Supporting (secondary) steelwork member section types and sizes are indicative only. Secondary steelwork is typically provided by the Structural Steelwork Contractor.

Project:

System: Metallic Interlocking Plank + Kartier Panel

Drawing Title: Horizontal Movement Joint

Drawn By: AE

Date: 06/08/2015

Drawing N°: MIP Hz KP Vt 100

Rev: 0

Greenfield Business Park No.2  
Greenfield, Holywell  
Flintshire, CH8 7GJ  
Tel: 01352 716 100  
Fax: 01352 710 161  
Technical: 0800 970 9036

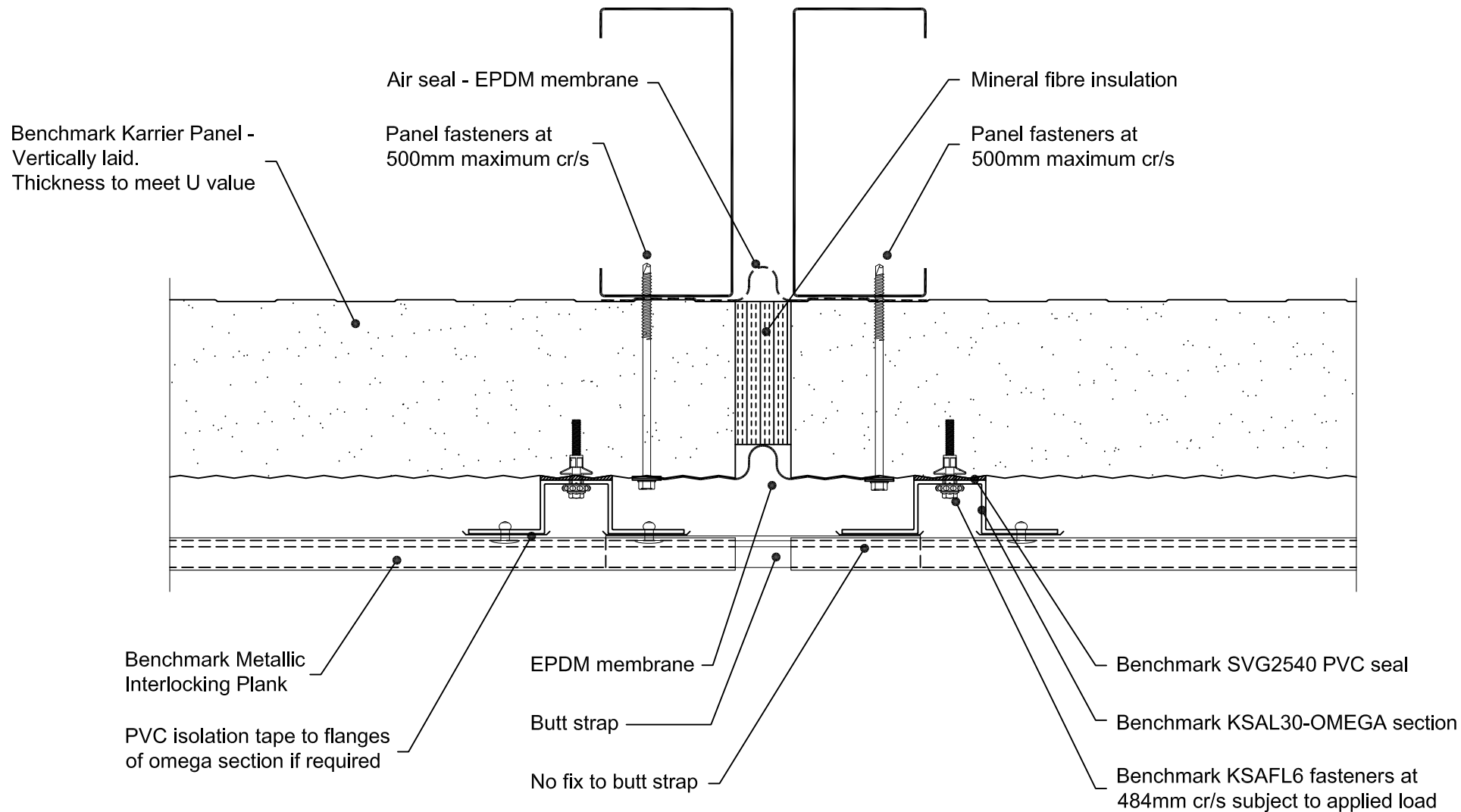
Email: [technical@kingspanbenchmark.com](mailto:technical@kingspanbenchmark.com)  
Website: [www.kingspanbenchmark.com](http://www.kingspanbenchmark.com)



By Kingspan

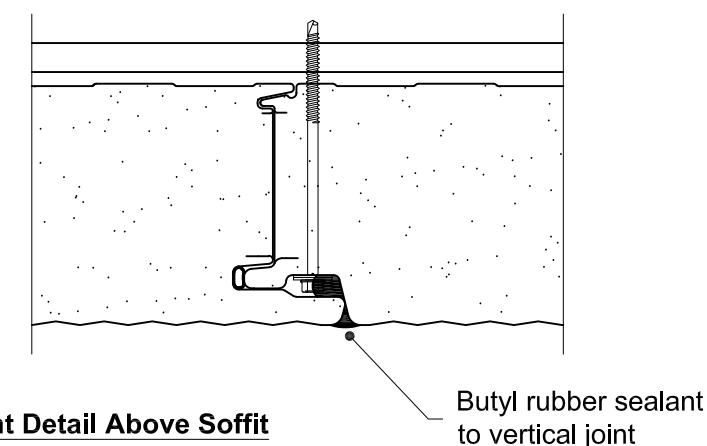
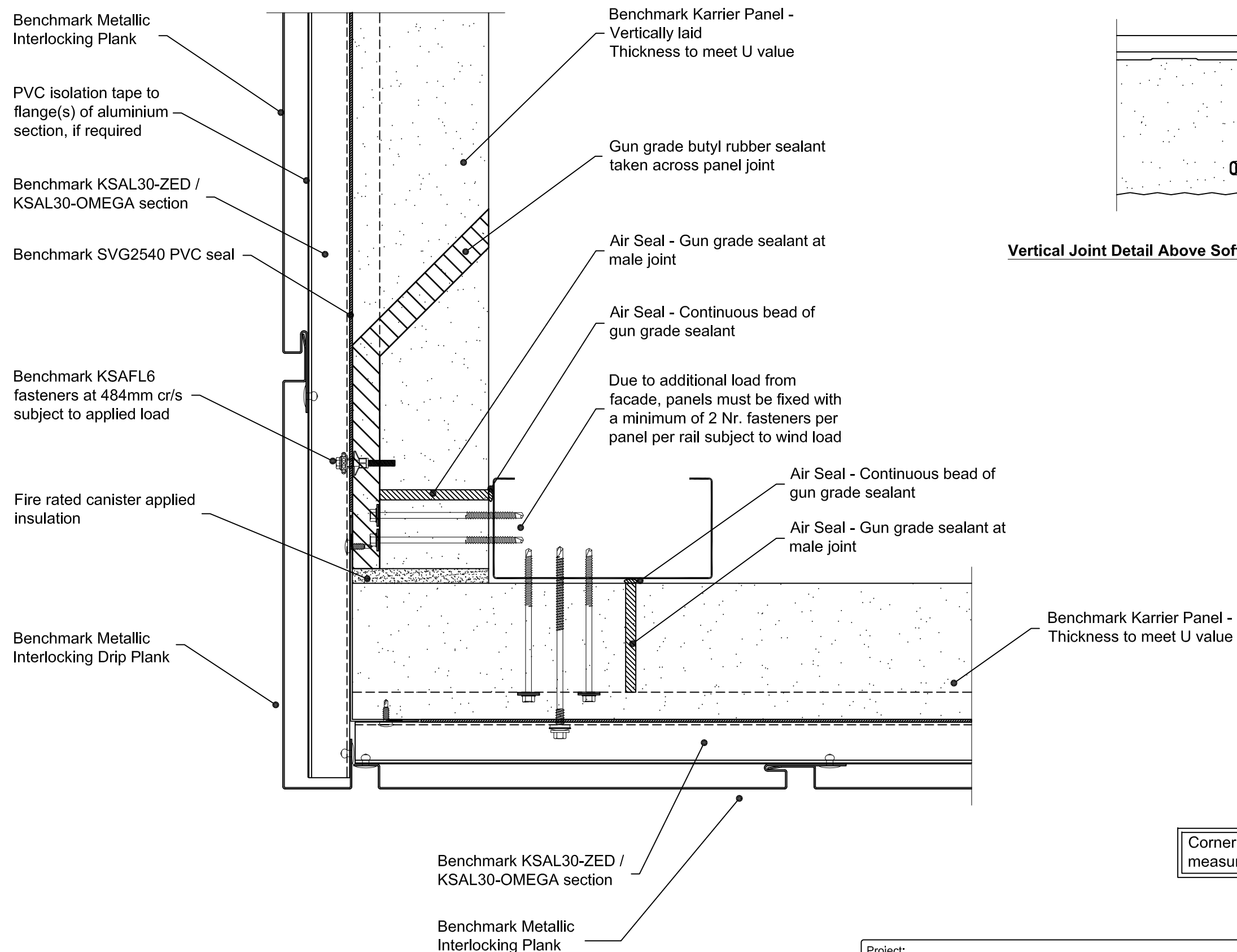
© Kingspan 2013





This is a generic construction detail. Supporting (secondary) steelwork member section types and sizes are indicative only. Secondary steelwork is typically provided by the Structural Steelwork Contractor.

Project:	
System:	Metallic Interlocking Plank + KP
Drawing Title:	Vertical Movement Joint
Drawn By:	AE
Date:	06/08/2015
Drawing N°:	MIP Hz KP Vt 101
Rev:	0
<p>Greenfield Business Park No.2 Greenfield, Holywell Flintshire, CH8 7GJ Tel: 01352 716 100 Fax: 01352 710 161 Technical: 0800 970 9036 Email: <a href="mailto:technical@kingspanbenchmark.com">technical@kingspanbenchmark.com</a> Website: <a href="http://www.kingspanbenchmark.com">www.kingspanbenchmark.com</a></p>	
<p><b>BENCHMARK</b> By Kingspan © Kingspan 2013</p>	



Corner cassette leg lengths may need to be site measured to cater for construction tolerances

This is a generic construction detail. Supporting (secondary) steelwork member section types and sizes are indicative only. Secondary steelwork is typically provided by the Structural Steelwork Contractor.

Project:	
System: Metallic Interlocking Plank + Karrier Panel	Greenfield Business Park No.2 Greenfield, Holywell Flintshire, CH8 7GJ Tel: 01352 716 100 Fax: 01352 710 161 Technical: 0800 970 9036 Email: technical@kingspanbenchmark.com Website: www.kingspanbenchmark.com
Drawing Title: Drip to Soffit	
Drawn By: AE	Date: 06/08/2015
Drawing N°. MIP Hz KP Vt 102	Rev: 0