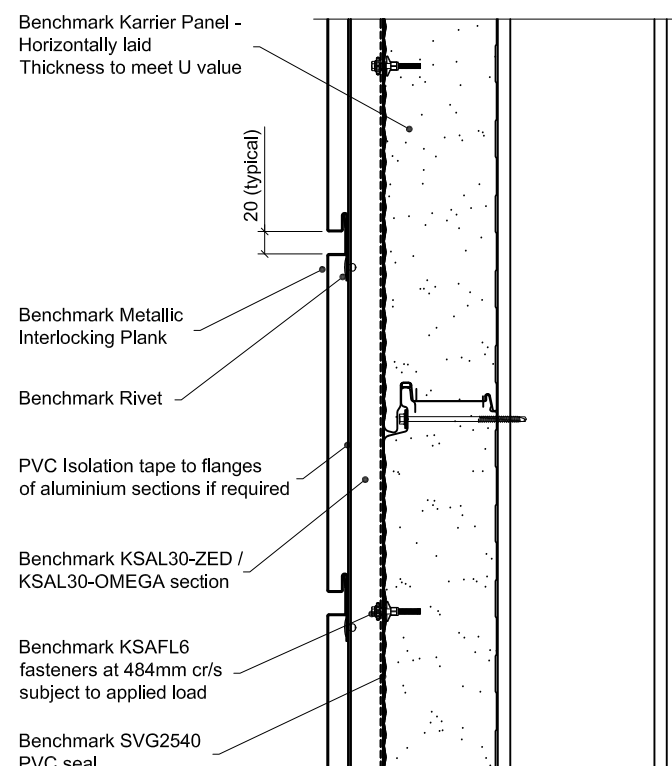
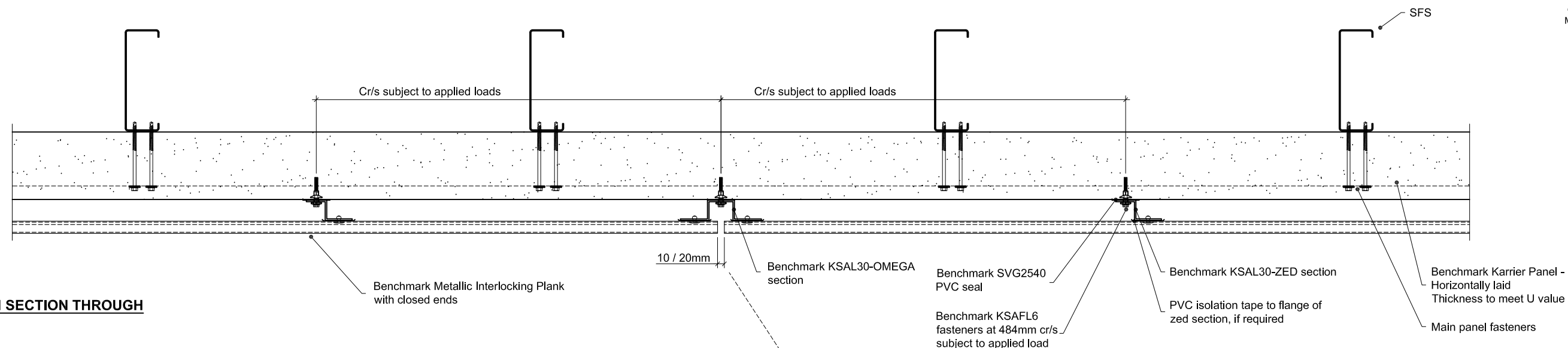


PLAN SECTION THROUGH

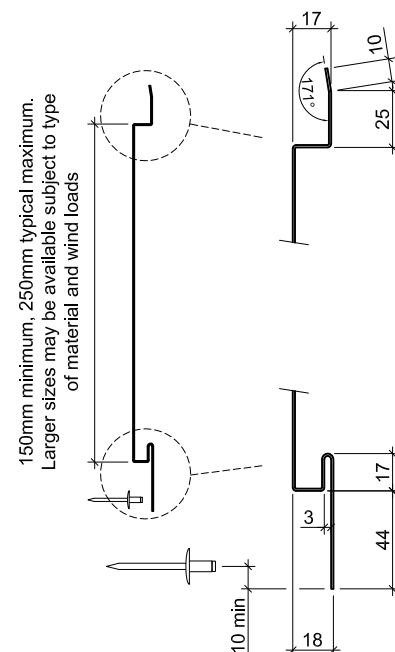


CROSS SECTION THROUGH

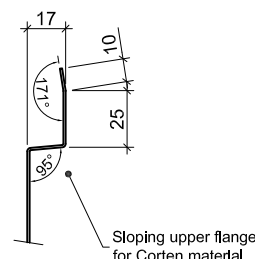
Note

Planks are installed working from top to bottom.

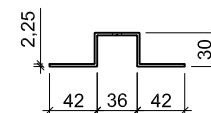
Typical Details of Plank for 20mm horizontal joint width (Scales vary)



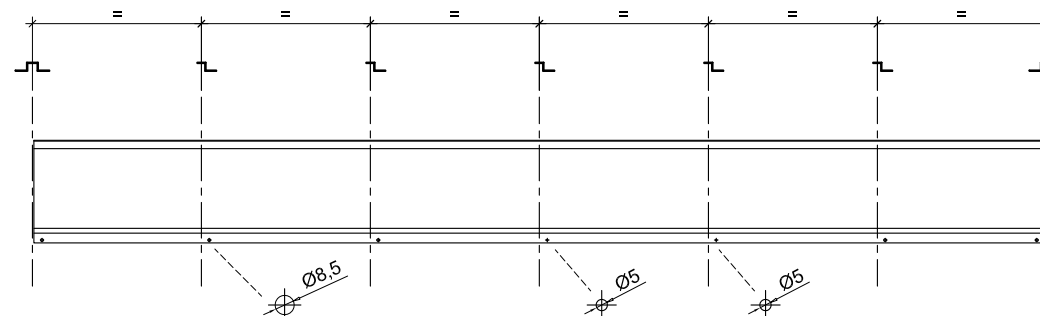
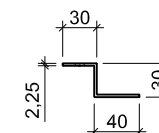
Corten Variant



Benchmark KSAL30-OMEGA Section



Benchmark KSAL30-ZED Section



Elevation on Plank (Scales vary)

Rivets - To be set with nose piece KSMR-NP

For aluminium, zinc and stainless steel cassettes:-

Benchmark KSMR-ALU

For corten and copper cassettes:-

Benchmark KSMR-SS

Project:

System: Metallic Interlocking Plank + Karrier Panel

Drawing Title: System Layout

Drawn By: BT

Date: 18/08/2015

Drawing N°. MIP Hz KP Hz 001

Rev: 0

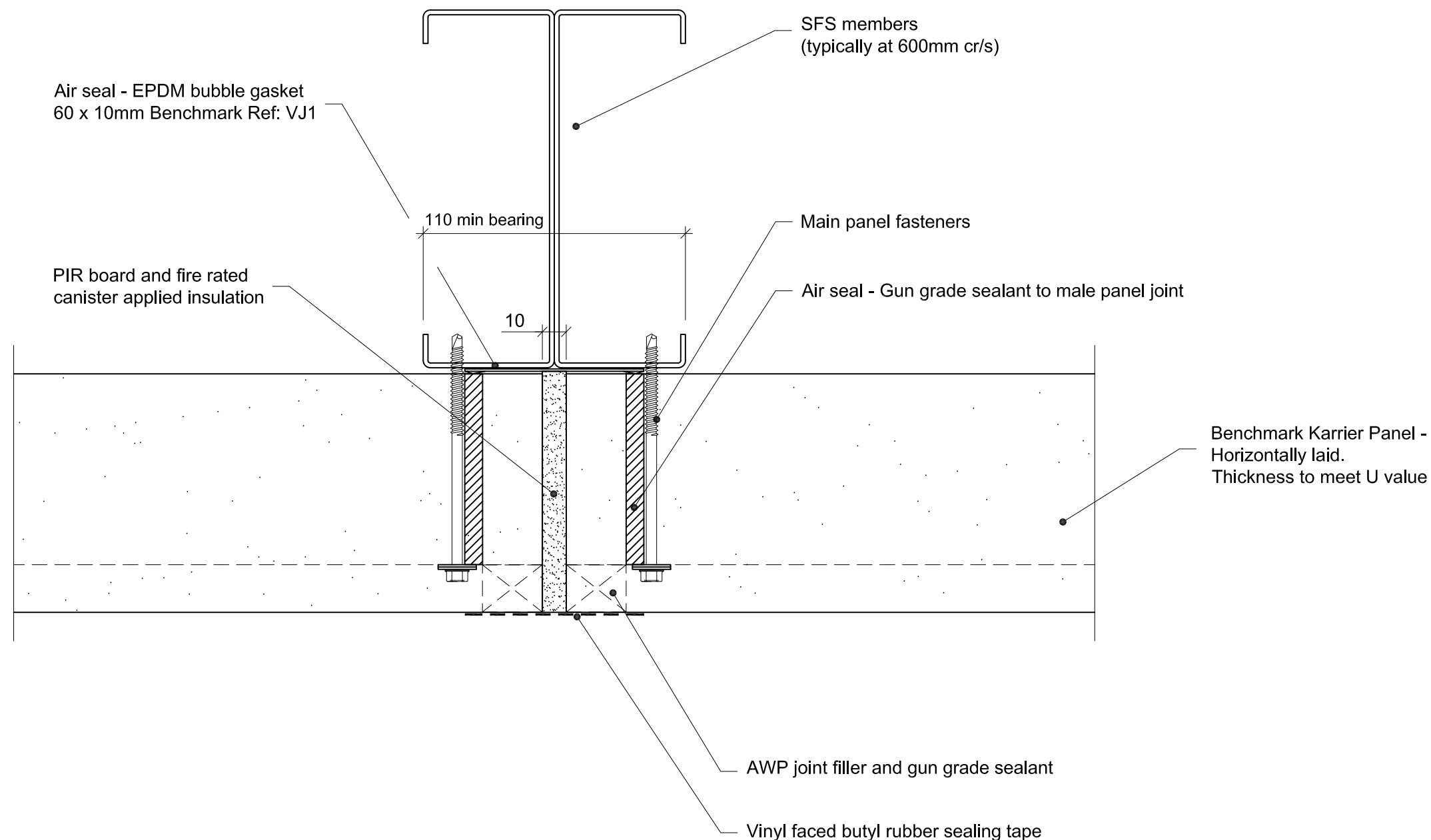
Greenfield Business Park No.2
Greenfield, Holywell
Flintshire. CH8 7GJ
Tel: 01352 716 100
Fax: 01352 710 161
Technical: 0800 970 9036
Email: technical@kingspanbenchmark.com
Website: www.kingspanbenchmark.com



By Kingspan

© Kingspan 2013

This is a generic construction detail. Supporting (secondary) steelwork member section types and sizes are indicative only. Secondary steelwork is typically provided by the Structural Steelwork Contractor.



Project:		Greenfield Business Park No.2	
System: Metallic Interlocking Plank + Karrier Panel		Flintshire. CH8 7GJ	
Drawing Title: Vertical Joint Detail		Tel: 01352 716 100	
Drawn By: BT		Fax: 01352 710 161	
Drawing N°. MIP Hz KP Hz 002		Technical: 0800 970 9036	
		Email: technical@kingspanbenchmark.com	
		Website: www.kingspanbenchmark.com	
		Date: 18/08/2015	
		Rev: 0	



By Kingspan

© Kingspan 2013

Benchmark Karrier Panel -
Horizontally laid
Thickness to meet U value

0 100mm

Benchmark Metallic
Interlocking Plank

SFS

Benchmark KSAL30-ZED /
KSAL30-OMEGA section

PVC isolation tape to
flange(s) of aluminium
section, if required

Benchmark SVG2540
PVC seal

Benchmark KSAFL6
fasteners at 484mmcr/s
subject to applied load

Air Seal - EPDM
membrane sealed to
slab and inside face
of Karrier Panel

PIR board insulation

Insect mesh

External drip flashing with
sealed joints. Sealed to
inner drip flashing

5 (min)

Benchmark panel bearers at
each end of Karrier Panels
and at 1500mm maximum cr/s

PIR board and fire rated
canister applied insulation

Compressible foam sealing tape

Ground floor slab

Project:

System: Metallic Interlocking Plank + Karrier Panel

Drawing Title: Drip Detail

Drawn By: BT

Date: 18/08/2015

Drawing N°: MIP Hz KP Hz 003

Rev: 0

Greenfield Business Park No.2
Greenfield, Holywell
Flintshire, CH8 7GJ
Tel: 01352 716 100
Fax: 01352 710 161

Technical: 0800 970 9036
Email: technical@kingspanbenchmark.com
Website: www.kingspanbenchmark.com

BENCHMARK

By Kingspan

© Kingspan 2013

This is a generic construction detail. Supporting steelwork member section types and sizes are indicative only. Steelwork is typically provided by the Structural Steelwork Contractor.

Benchmark Karrier Panel -
Horizontally laid
Thickness to meet U value

0 100mm

Benchmark Metallic
Interlocking Plank

SFS

Benchmark KSAL30-ZED /
KSAL30-OMEGA section

PVC isolation tape to
flange(s) of aluminium
section, if required

Benchmark SVG2540
PVC seal

Benchmark KSAFL6
fasteners at 484mm cr/s
subject to applied load

Air Seal - EPDM
membrane sealed to
blockwork and inside
face of Karrier Panel

PIR board insulation

Insect mesh

External drip flashing with
sealed joints. Sealed to
inner drip flashing

5 (min)

Benchmark panel
bearers at each end of
Karrier Panels and at
1500mm maximum cr/s

PIR board and fire rated
canister applied insulation

Compressible foam
sealing tape

Brickwork

This is a generic construction detail. Supporting steelwork member section types and sizes are indicative only. Steelwork is typically provided by the Structural Steelwork Contractor.

Project:

System: Metallic Interlocking Plank + Karrier Panel

Drawing Title: Drip Detail

Drawn By: BT

Date: 18/08/2015

Drawing N°: MIP Hz KP Hz 004

Rev: 0

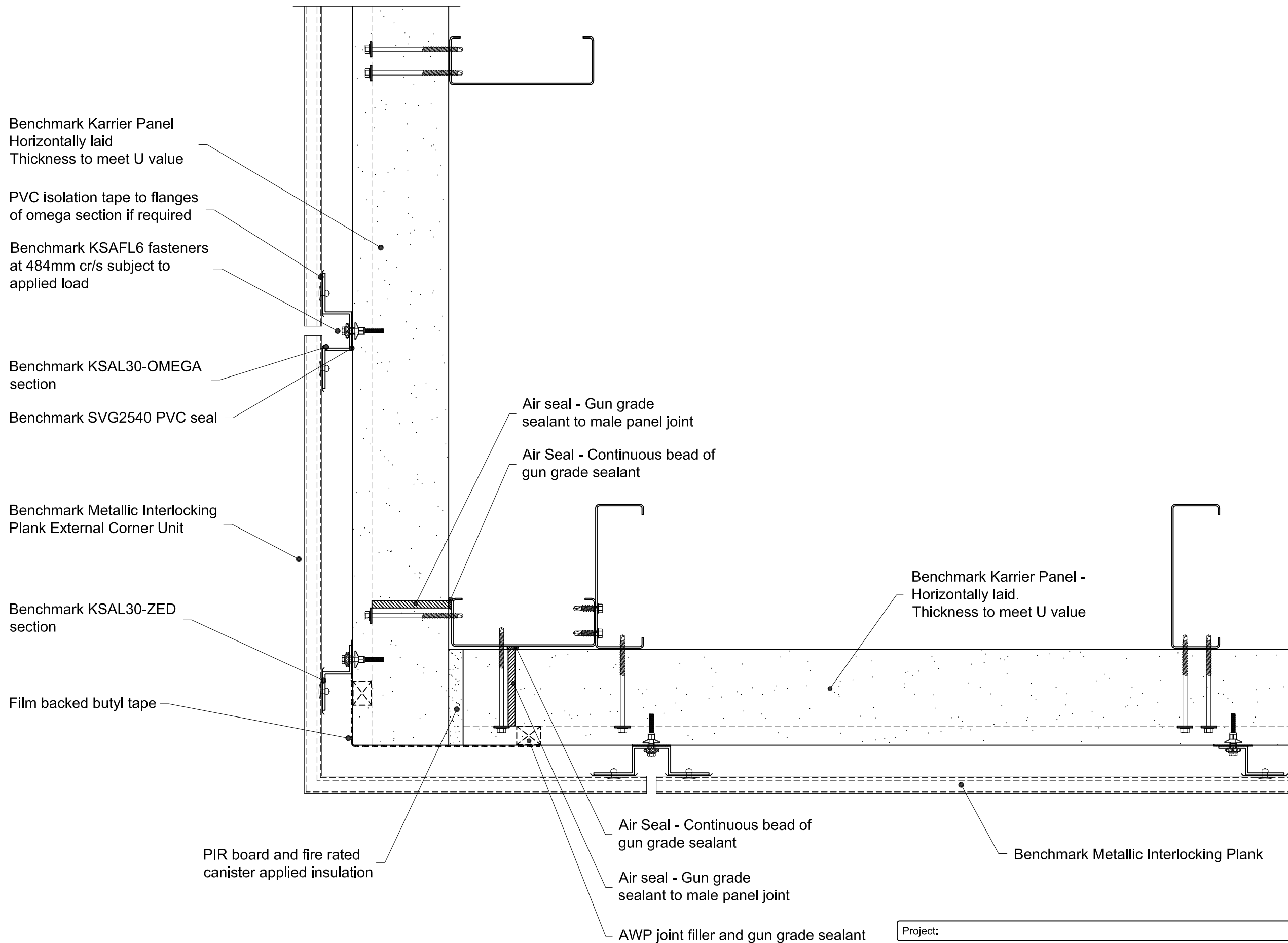
Greenfield Business Park No.2
Greenfield, Holywell
Flintshire, CH8 7GJ
Tel: 01352 716 100
Fax: 01352 710 161
Technical: 0800 970 9036

Email: technical@kingspanbenchmark.com
Website: www.kingspanbenchmark.com

BENCHMARK


By Kingspan

© Kingspan 2013

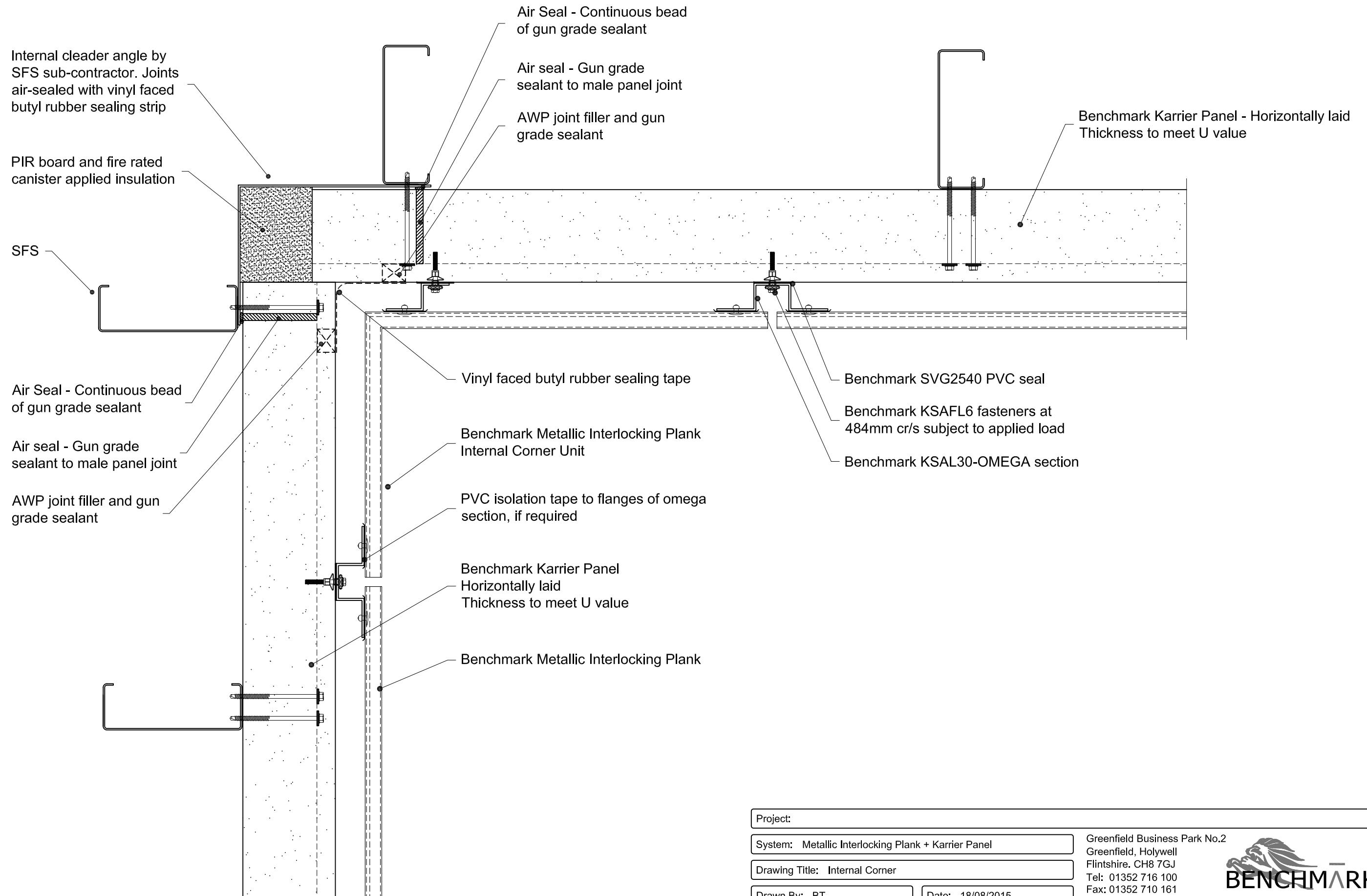


Corner cassette leg lengths may need to be site measured to cater for construction tolerances

This is a generic construction detail. Supporting steelwork member section types and sizes are indicative only. Steelwork is typically provided by the Structural Steelwork Contractor.

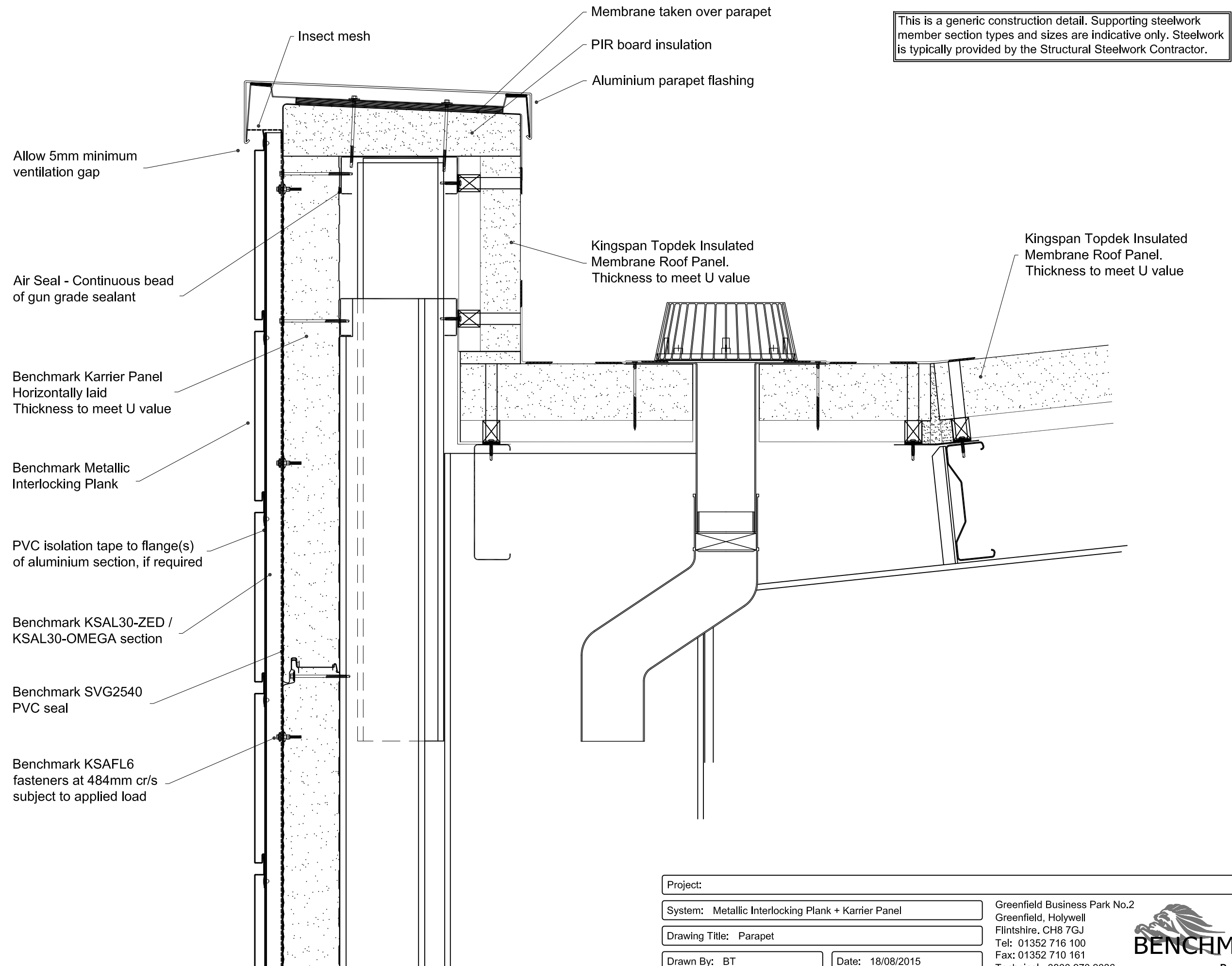
Project:		Greenfield Business Park No.2 Greenfield, Holywell Flintshire. CH8 7GJ Tel: 01352 716 100 Fax: 01352 710 161 Technical: 0800 970 9036 Email: technical@kingspanbenchmark.com Website: www.kingspanbenchmark.com	
System: Metallic Interlocking Plank + Karrier Panel		 By Kingspan © Kingspan 2013	
Drawing Title: External Corner			
Drawn By: BT	Date: 18/08/2015		
Drawing N°. MIP Hz KP Hz 005	Rev: 0		

This is a generic construction detail. Supporting steelwork member section types and sizes are indicative only. Steelwork is typically provided by the Structural Steelwork Contractor.



Project:			
System: Metallic Interlocking Plank + Karrier Panel		Greenfield Business Park No.2 Greenfield, Holywell Flintshire. CH8 7GJ Tel: 01352 716 100 Fax: 01352 710 161 Technical: 0800 970 9036 Email: technical@kingspanbenchmark.com Website: www.kingspanbenchmark.com	
Drawing Title: Internal Corner		By Kingspan	
Drawn By: BT	Date: 18/08/2015	© Kingspan 2013	
Drawing N°. MIP Hz KP Hz 006	Rev: 0		



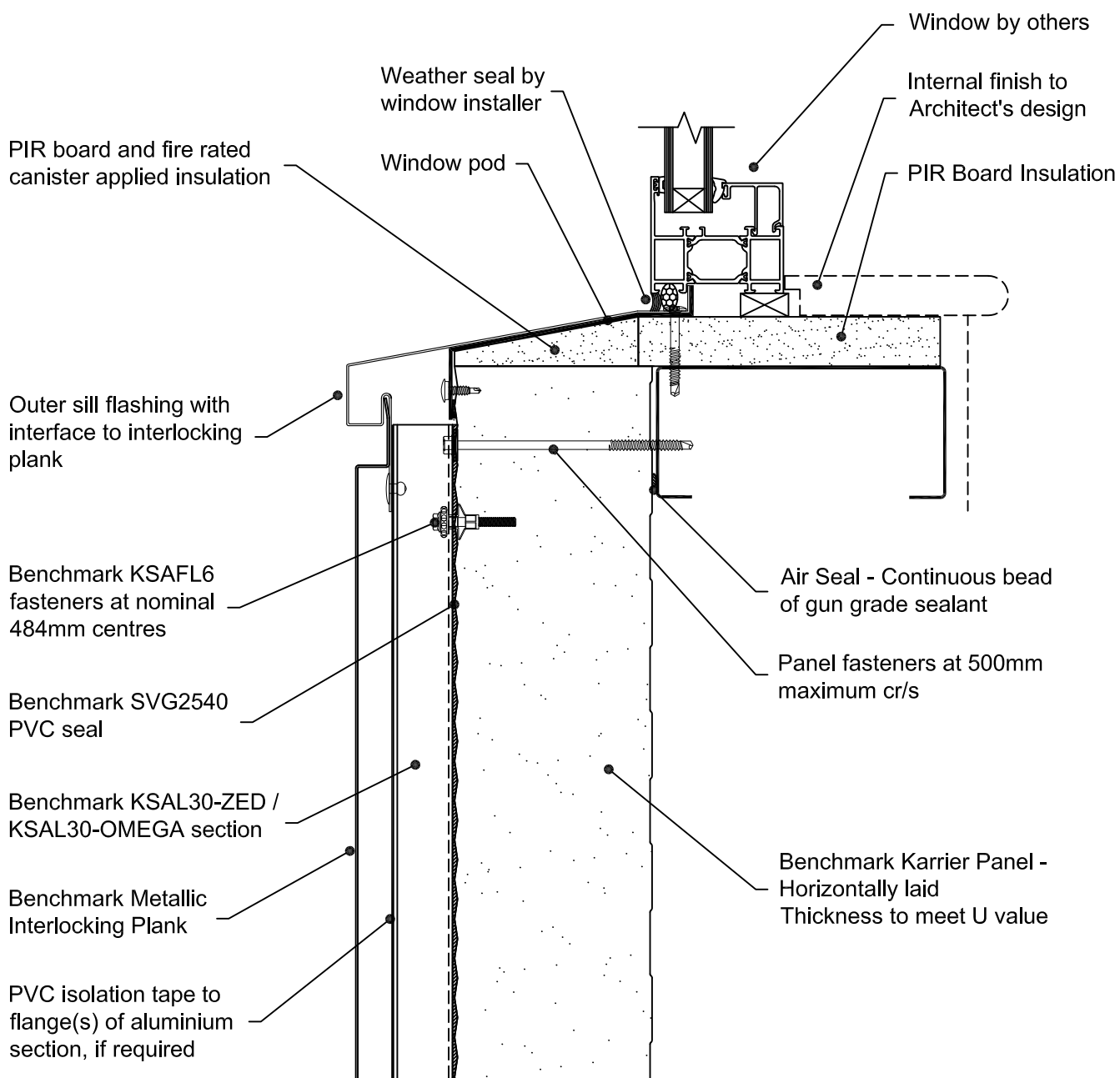


Project:		Greenfield Business Park No.2	
System: Metallic Interlocking Plank + Karrier Panel		Greenfield, Holywell	
Drawing Title: Parapet		Flintshire, CH8 7GJ	
Drawn By: BT		Tel: 01352 716 100	
Date: 18/08/2015		Fax: 01352 710 161	
Drawing N°. MIP Hz KP Hz 007		Technical: 0800 970 9036	
Rev: 0		Email: technical@kingspanbenchmark.com	
		Website: www.kingspanbenchmark.com	



By Kingspan

© Kingspan 2013



This is a generic construction detail. Supporting (secondary) steelwork member section types and sizes are indicative only. Secondary steelwork is typically provided by the Structural Steelwork Contractor.

Project:

System: Metallic Interlocking Plank + Karrier Panel

Drawing Title: Window Sill

Drawn By: BT

Date: 18/08/2015

Drawing N°. MIP Hz KP Hz 008

Rev: 0

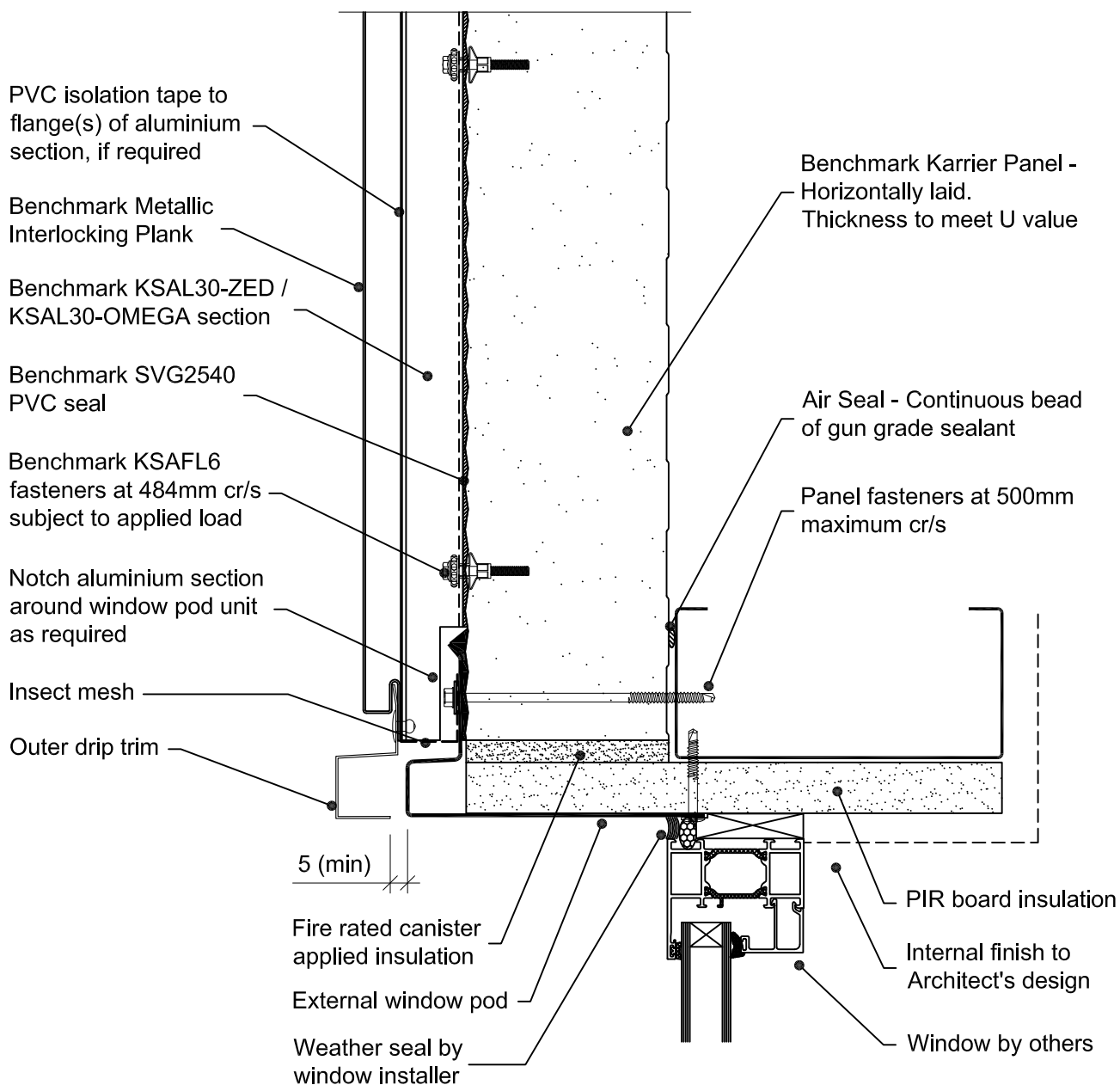
Greenfield Business Park No.2
Greenfield, Holywell
Flintshire, CH8 7GJ
Tel: 01352 716 100
Fax: 01352 710 161

Technical: 0800 970 9036
Email: technical@kingspanbenchmark.com
Website: www.kingspanbenchmark.com



By Kingspan

© Kingspan 2013



This is a generic construction detail. Supporting (secondary) steelwork member section types and sizes are indicative only. Secondary steelwork is typically provided by the Structural Steelwork Contractor.

Project:

System: Metallic Interlocking Plank + Karrier Panel

Drawing Title: Window Head

Drawn By: BT

Date: 18/08/2015

Drawing N°: MIP Hz KP Hz 009

Rev: 0

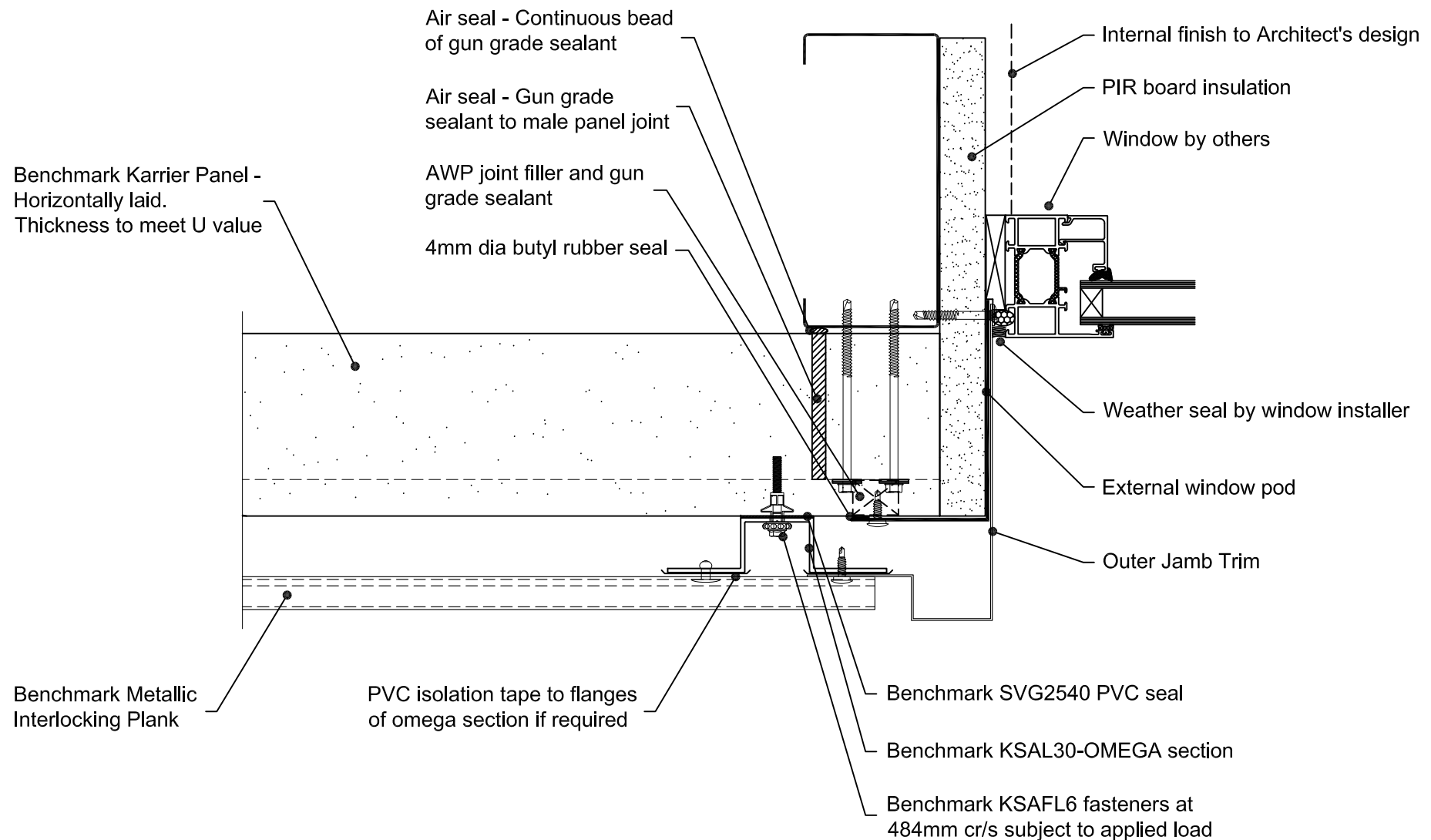
Greenfield Business Park No.2
Greenfield, Holywell
Flintshire, CH8 7GJ
Tel: 01352 716 100
Fax: 01352 710 161

Technical: 0800 970 9036
Email: technical@kingspanbenchmark.com
Website: www.kingspanbenchmark.com

BENCHMARK

By Kingspan

© Kingspan 2013



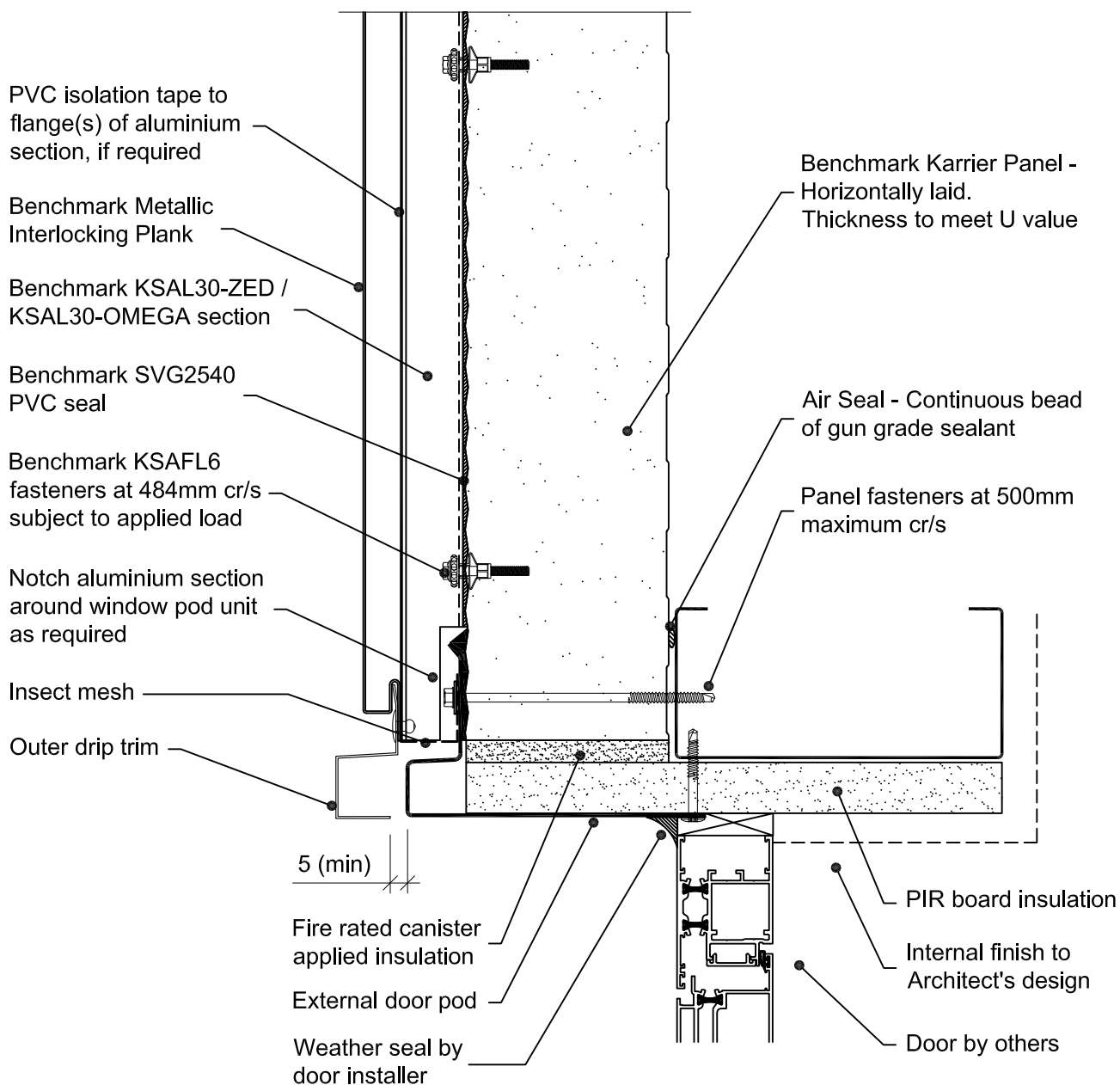
This is a generic construction detail. Supporting (secondary) steelwork member section types and sizes are indicative only. Secondary steelwork is typically provided by the Structural Steelwork Contractor.

Project:			
System: Metallic Interlocking Plank + KP		Greenfield Business Park No.2 Greenfield, Holywell Flintshire, CH8 7GJ	
Drawing Title: Window Jamb		Tel: 01352 716 100 Fax: 01352 710 161	
Drawn By: BT	Date: 18/08/2015	Technical: 0800 970 9036 Email: technical@kingspanbenchmark.com	
Drawing N°. MIP Hz KP Hz 010	Rev: 0	Website: www.kingspanbenchmark.com	



By Kingspan

© Kingspan 2013



This is a generic construction detail. Supporting (secondary) steelwork member section types and sizes are indicative only. Secondary steelwork is typically provided by the Structural Steelwork Contractor.

Project:

System: Metallic Interlocking Plank + Karrier Panel

Drawing Title: Door Head

Drawn By: BT

Date: 18/08/2015

Drawing N°. MIP Hz KP Hz 011

Rev: 0

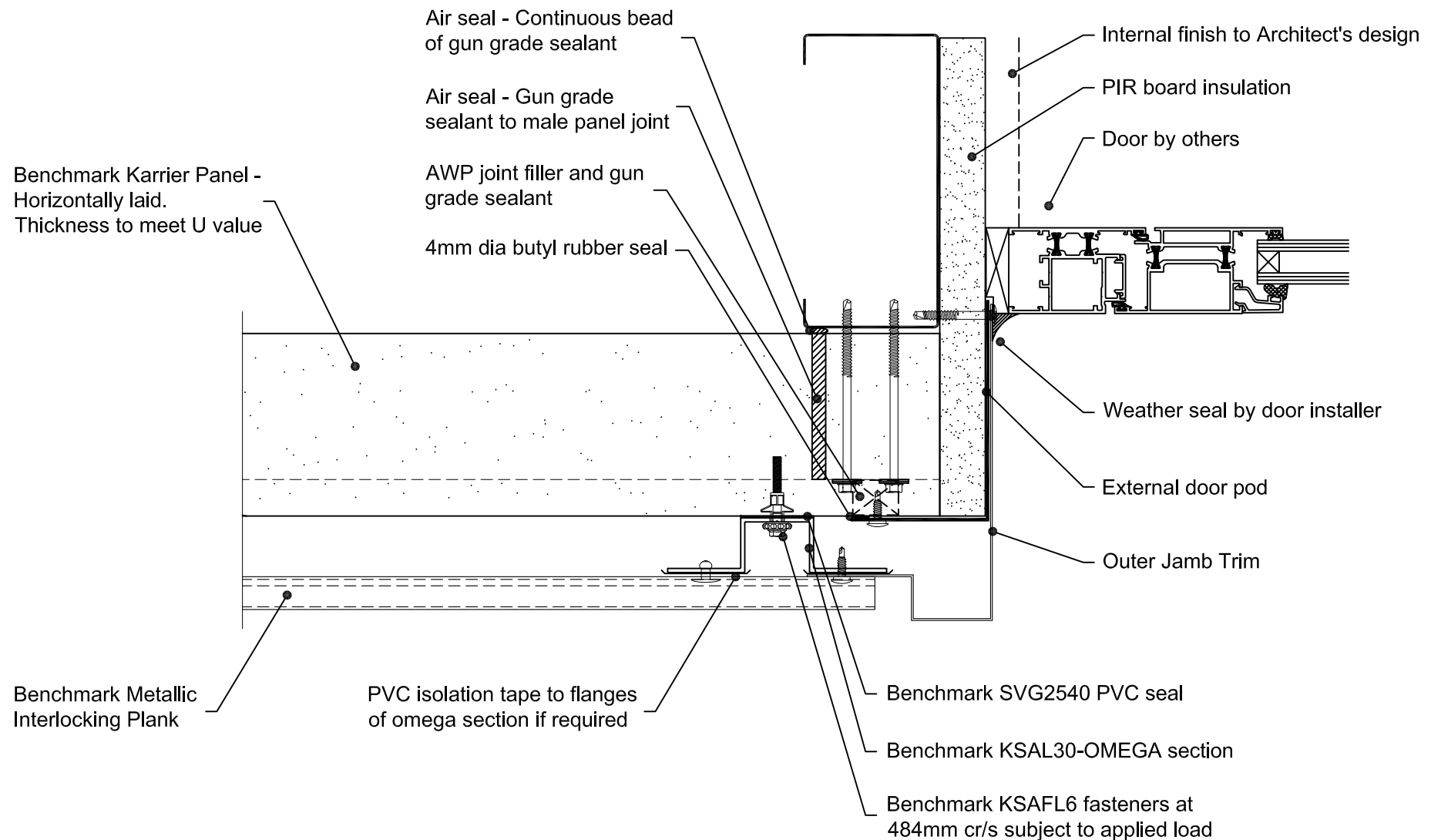
Greenfield Business Park No.2
Greenfield, Holywell
Flintshire, CH8 7GJ
Tel: 01352 716 100
Fax: 01352 710 161

Technical: 0800 970 9036
Email: technical@kingspanbenchmark.com
Website: www.kingspanbenchmark.com

BENCHMARK

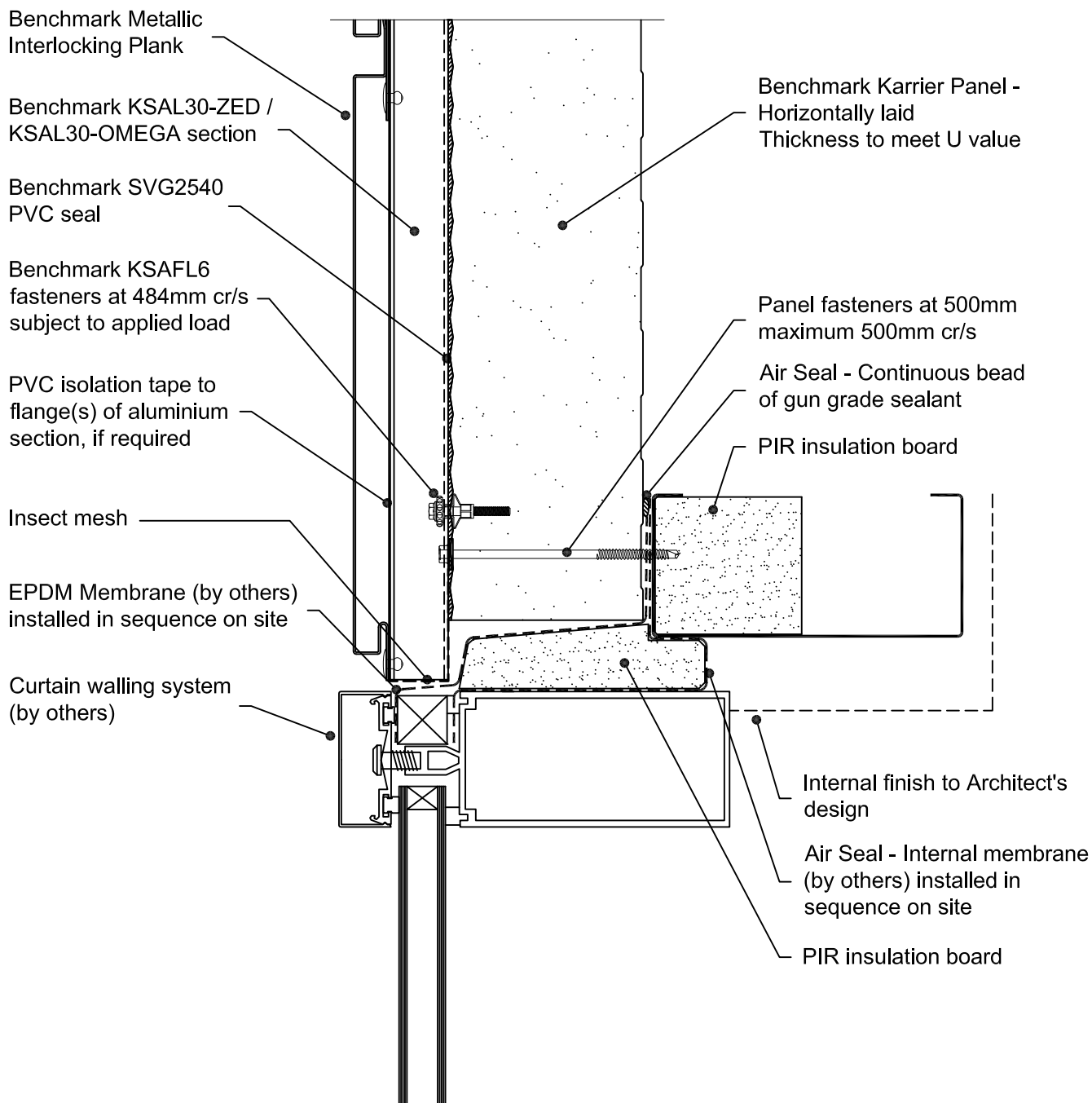
By Kingspan

© Kingspan 2013




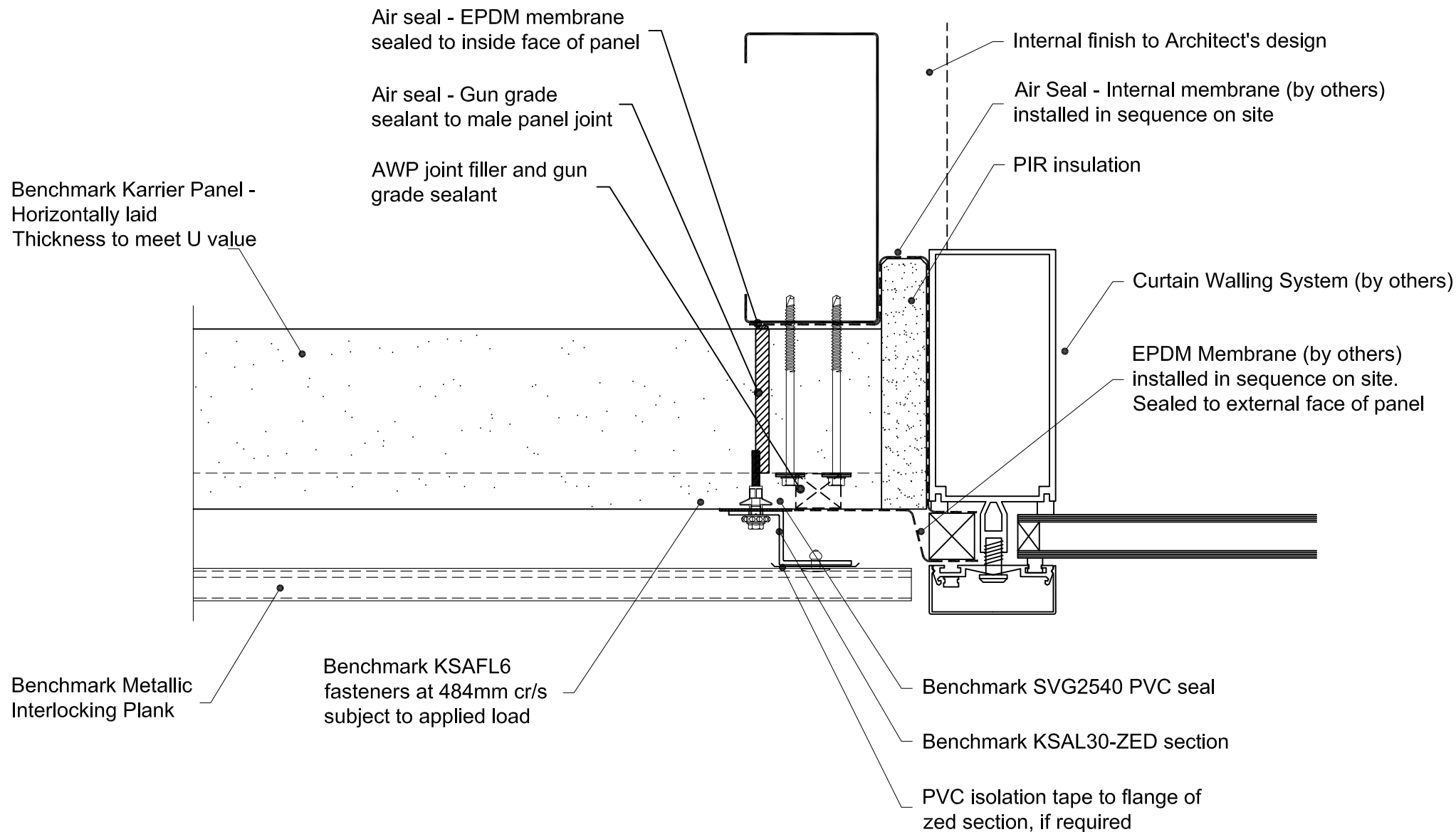
This is a generic construction detail. Supporting (secondary) steelwork member section types and sizes are indicative only. Secondary steelwork is typically provided by the Structural Steelwork Contractor.

Project:			
System: Metallic Interlocking Plank + KP		Greenfield Business Park No.2 Greenfield, Holywell Flintshire, CH8 7GJ	
Drawing Title: Door Jamb		Tel: 01352 716 100 Fax: 01352 710 161	
Drawn By: BT	Date: 18/08/2015	Technical: 0800 970 9036	
Drawing N°. MIP Hz KP Hz 012		Email: technical@kingspanbenchmark.com	
Rev: 0		Website: www.kingspanbenchmark.com	



This is a generic construction detail. Supporting (secondary) steelwork member section types and sizes are indicative only. Secondary steelwork is typically provided by the Structural Steelwork Contractor.

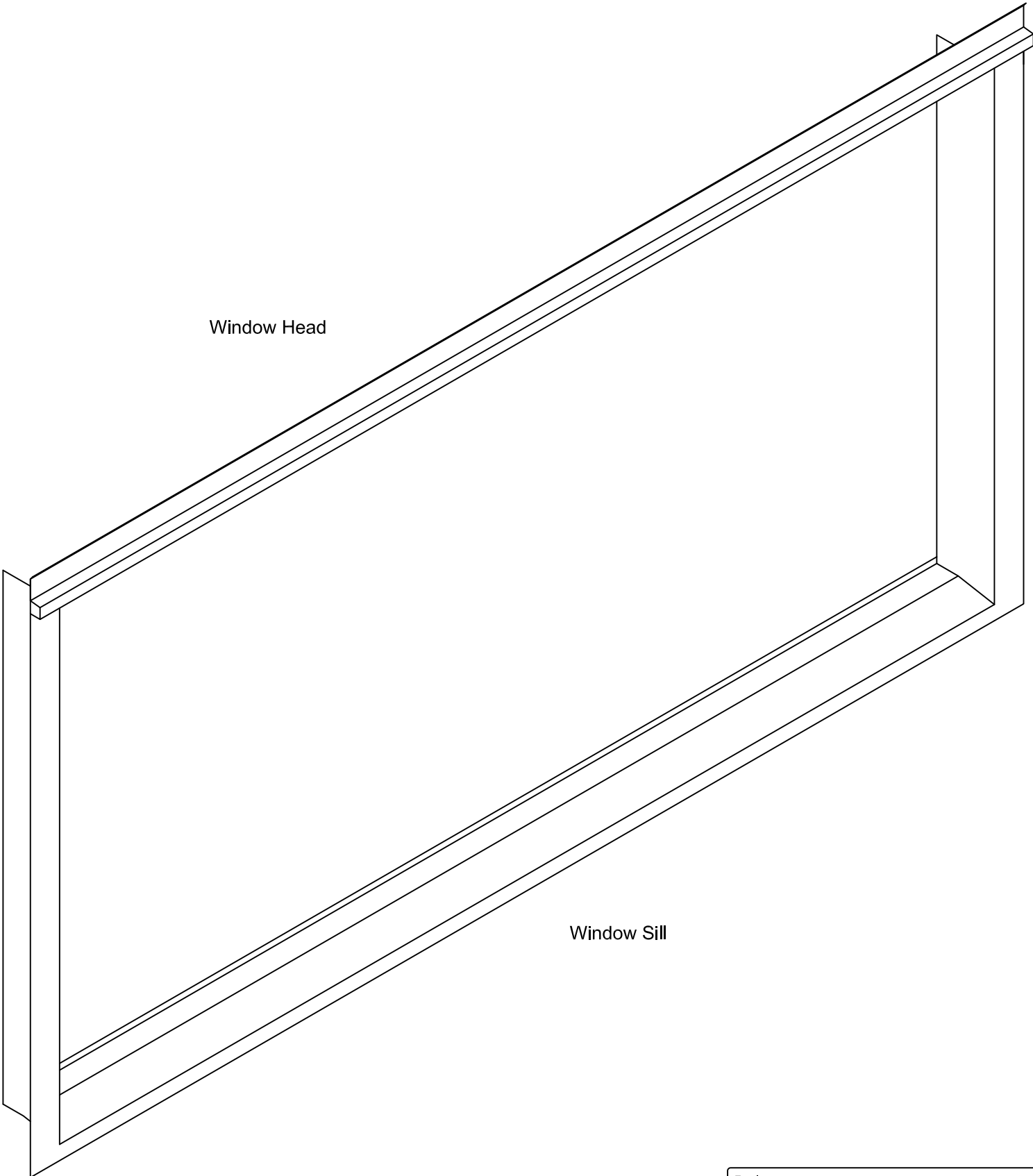
Project:		Greenfield Business Park No.2 Greenfield, Holywell Flintshire, CH8 7GJ Tel: 01352 716 100 Fax: 01352 710 161 Technicat: 0800 970 9036 Email: technical@kingspanbenchmark.com Website: www.kingspanbenchmark.com	
System: Metallic Interlocking Plank + Karrier Panel		 By Kingspan © Kingspan 2013	
Drawing Title: Curtain Wall Head			
Drawn By: BT	Date: 18/08/2015		
Drawing N°. MIP Hz KP Hz 013	Rev: 0		



This is a generic construction detail. Supporting (secondary) steelwork member section types and sizes are indicative only. Secondary steelwork is typically provided by the Structural Steelwork Contractor.

Project:		Greenfield Business Park No.2 Greenfield, Holywell Flintshire, CH8 7GJ Tel: 01352 716 100 Fax: 01352 710 161 Technical: 0800 970 9036 Email: technical@kingspanbenchmark.com Website: www.kingspanbenchmark.com	
System: Metallic Interlocking Plank + KP		By Kingspan	
Drawing Title: Curtain Wall Jamb		© Kingspan 2013	
Drawn By: BT	Date: 18/08/2015		
Drawing N°. MIP Hz KP Hz 014	Rev: 0		





Generic only - component profile
and dimensions are tailored to suit
specific application

Project:

System: Metallic Interlocking Plank + Karrier Panel

Drawing Title: Window Pod - Generic

Drawn By: BT

Date: 18/08/2015

Drawing N°. MIP Hz KP Hz 015

Rev: 0

Greenfield Business Park No.2
Greenfield, Holywell
Flintshire. CH8 7GJ
Tel: 01352 716 100
Fax: 01352 710 161
Technical: 0800 970 9036
Email: technical@kingspanbenchmark.com
Website: www.kingspanbenchmark.com



By Kingspan

© Kingspan 2013

Benchmark Karrier Panel
- Horizontally laid and cranked.
Thickness to meet U value

PVC isolation tape to flanges
of top-hat, if required

Benchmark KSAFL6 fasteners
at 484mm cr/s subject to applied load

Benchmark Metallic Interlocking Plank

Benchmark SVG2540 PVC seal

Benchmark KSAL30-OMEGA section

Project:

System: Metallic Interlocking Plank + Karrier Panel

Drawing Title: Faceted Wall

Drawn By: BT

Date: 18/08/2015

Drawing N°. MIP Hz KP Hz 016

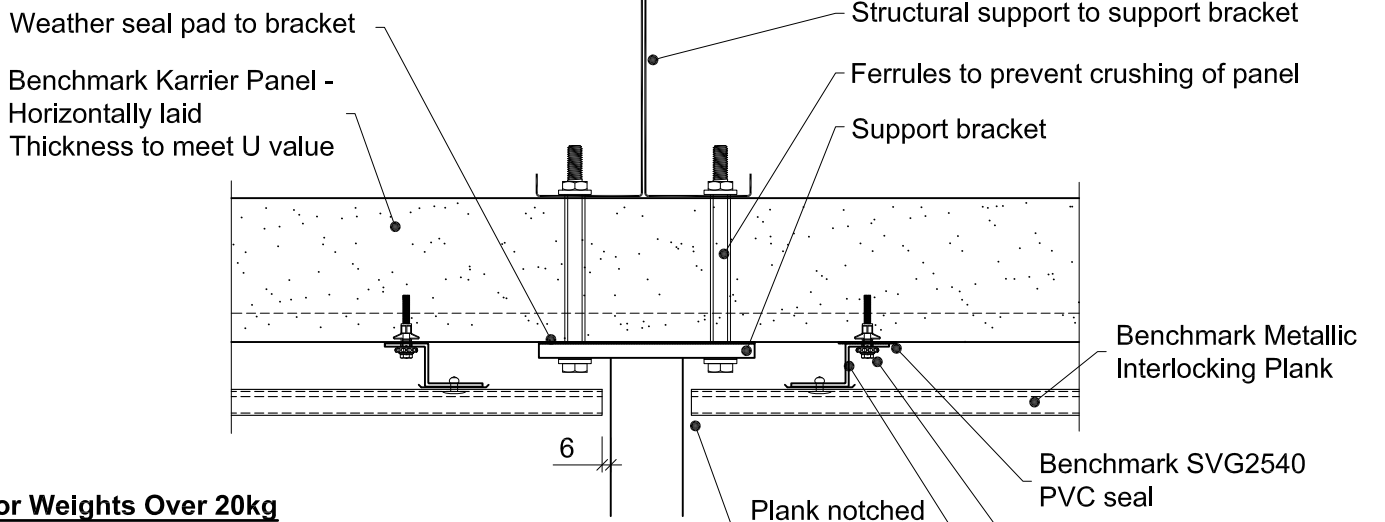
Rev: 0

Greenfield Business Park No.2
Greenfield, Holywell
Flintshire. CH8 7GJ
Tel: 01352 716 100
Fax: 01352 710 161
Technical: 0800 970 9036
Email: technical@kingspanbenchmark.com
Website: www.kingspanbenchmark.com

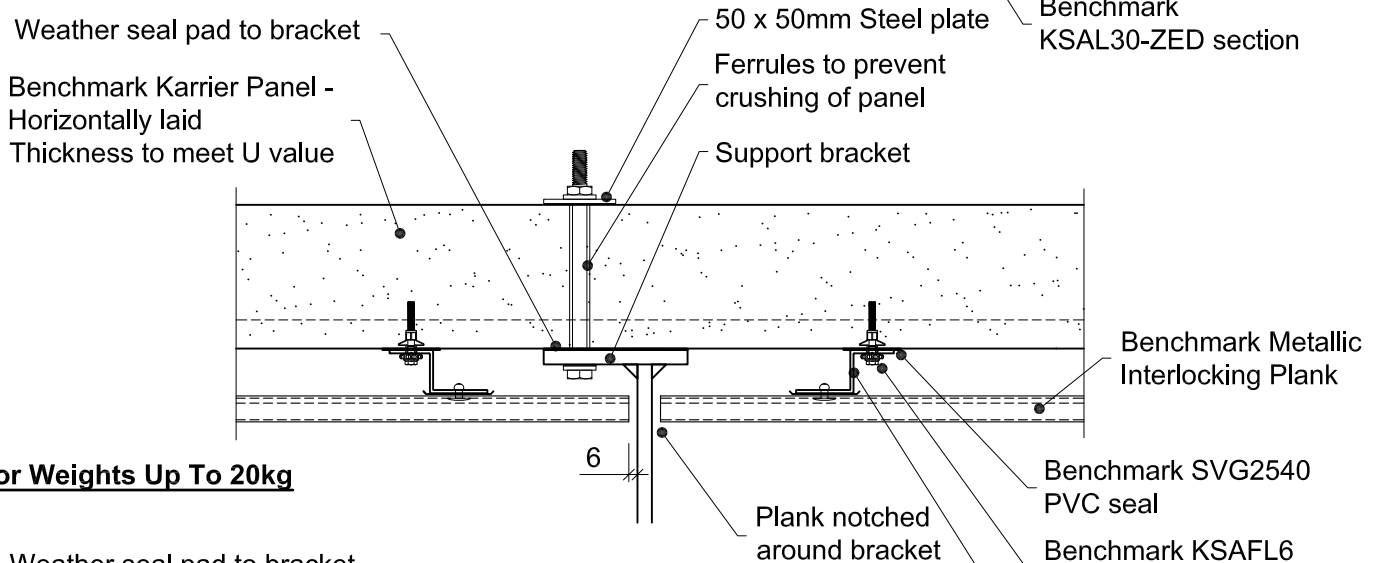


By Kingspan

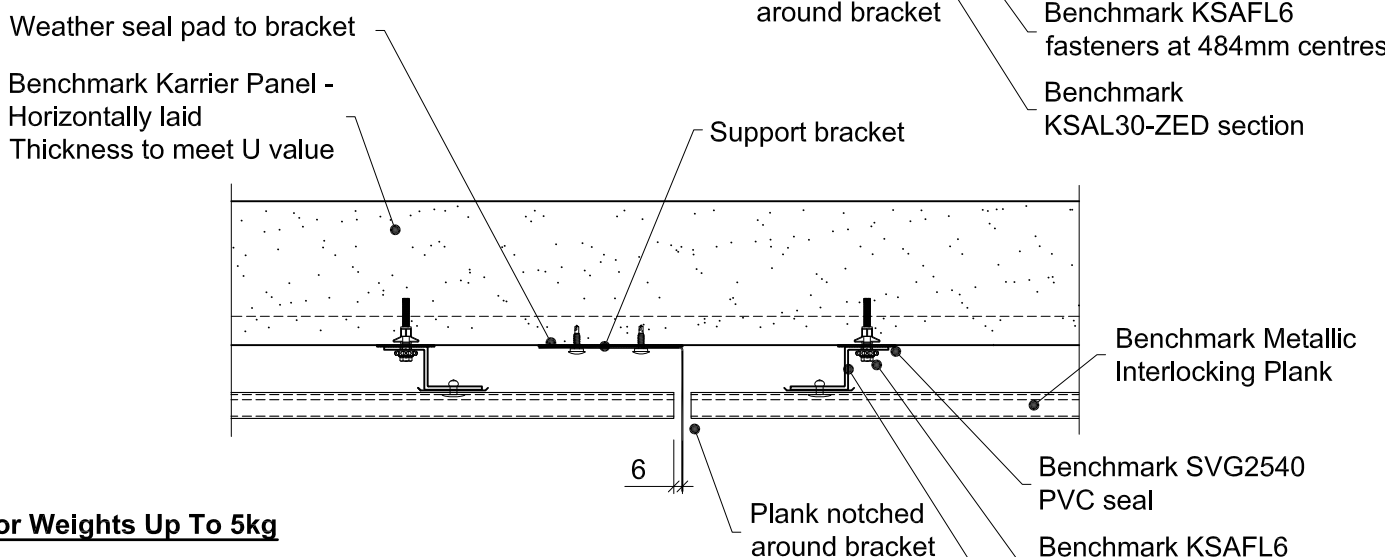
© Kingspan 2013



For Weights Over 20kg



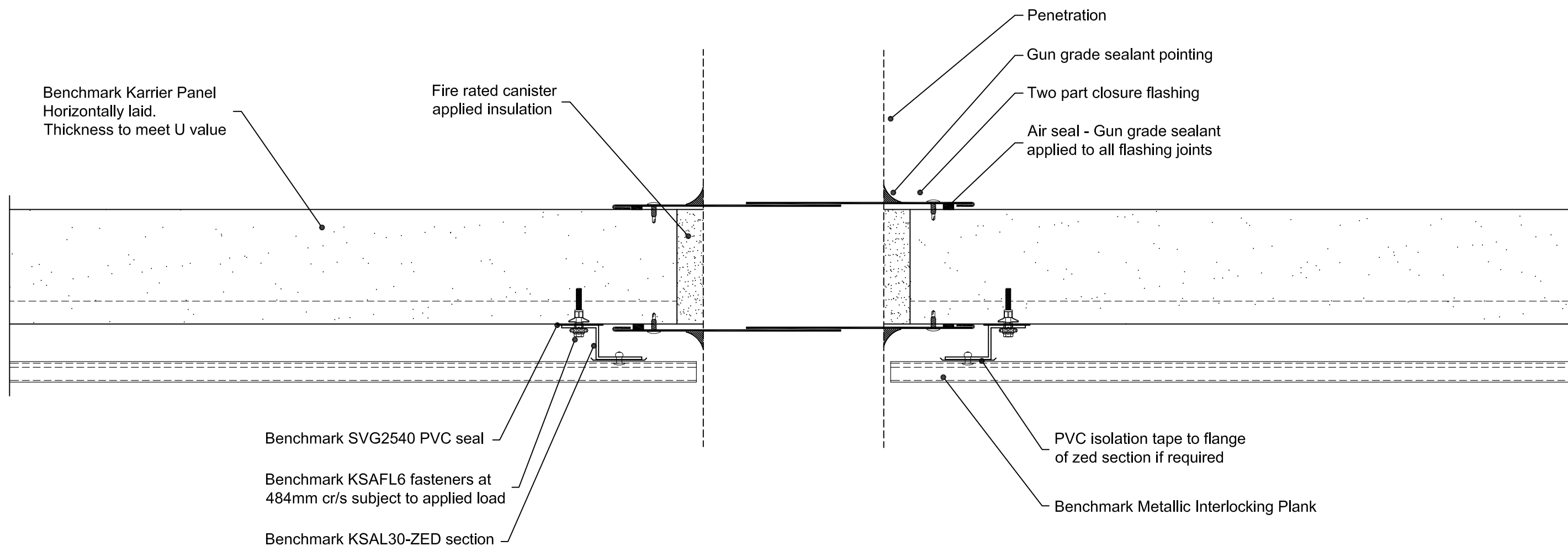
For Weights Up To 20kg



For Weights Up To 5kg

Longitudinal Sections Through Elevation

Project:		Greenfield Business Park No.2	
System: Metallic Interlocking Plank + Karrier Panel		Greenfield, Holywell	
Drawing Title: Signage, Brts Solell and Support Brackets		Flintshire. CH8 7GJ	
Drawn By: BT		Tel: 01352 716 100	
Date: 18/08/2015		Fax: 01352 710 161	
Drawing N°: MIP Hz KP Hz 017		Technical: 0800 970 9036	
Rev: 0		Email: technical@kingspanbenchmark.com	
		Website: www.kingspanbenchmark.com	



Longitudinal Section Through Elevation

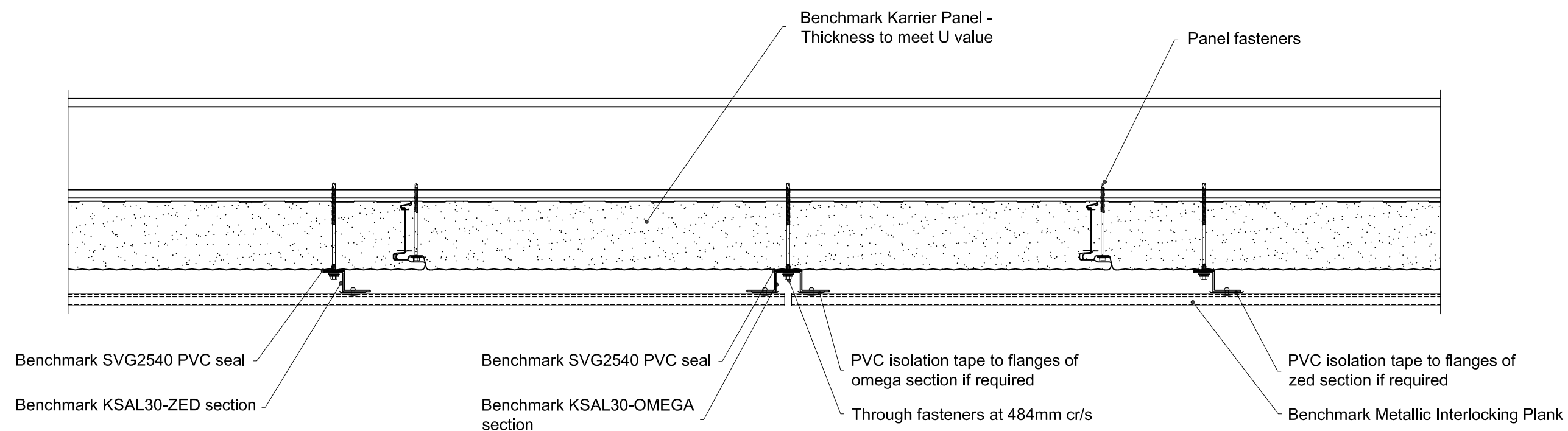
Any penetration must be a minimum of 100mm from the joint in the Karrier Panel.
Maximum penetration size of 300mm without structural trimmers to support Karrier Panel.

Project:	
System: Metallic Interlocking Plank + Karrier Panel	Greenfield Business Park No.2 Greenfield, Holywell Flintshire, CH8 7GJ Tel: 01352 716 100 Fax: 01352 710 161 Technical: 0800 970 9036 Email: technical@kingspanbenchmark.com Website: www.kingspanbenchmark.com
Drawing Title: Penetrations	
Drawn By: BT	Date: 18/08/2015
Drawing N°. MIP Hz KP Hz 018	Rev: 0

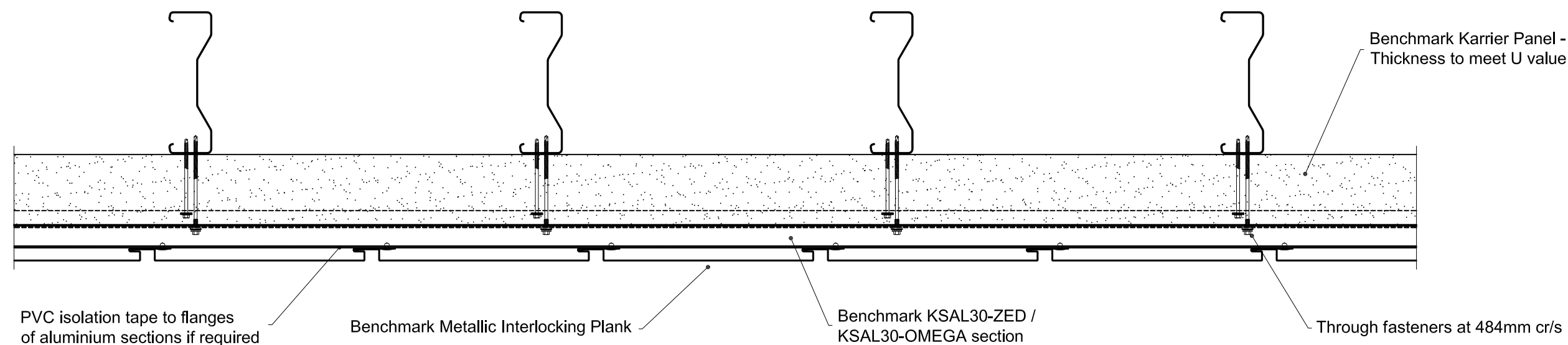


By Kingspan

© Kingspan 2013



CROSS SECTION THROUGH



LONGITUDINAL SECTION THROUGH

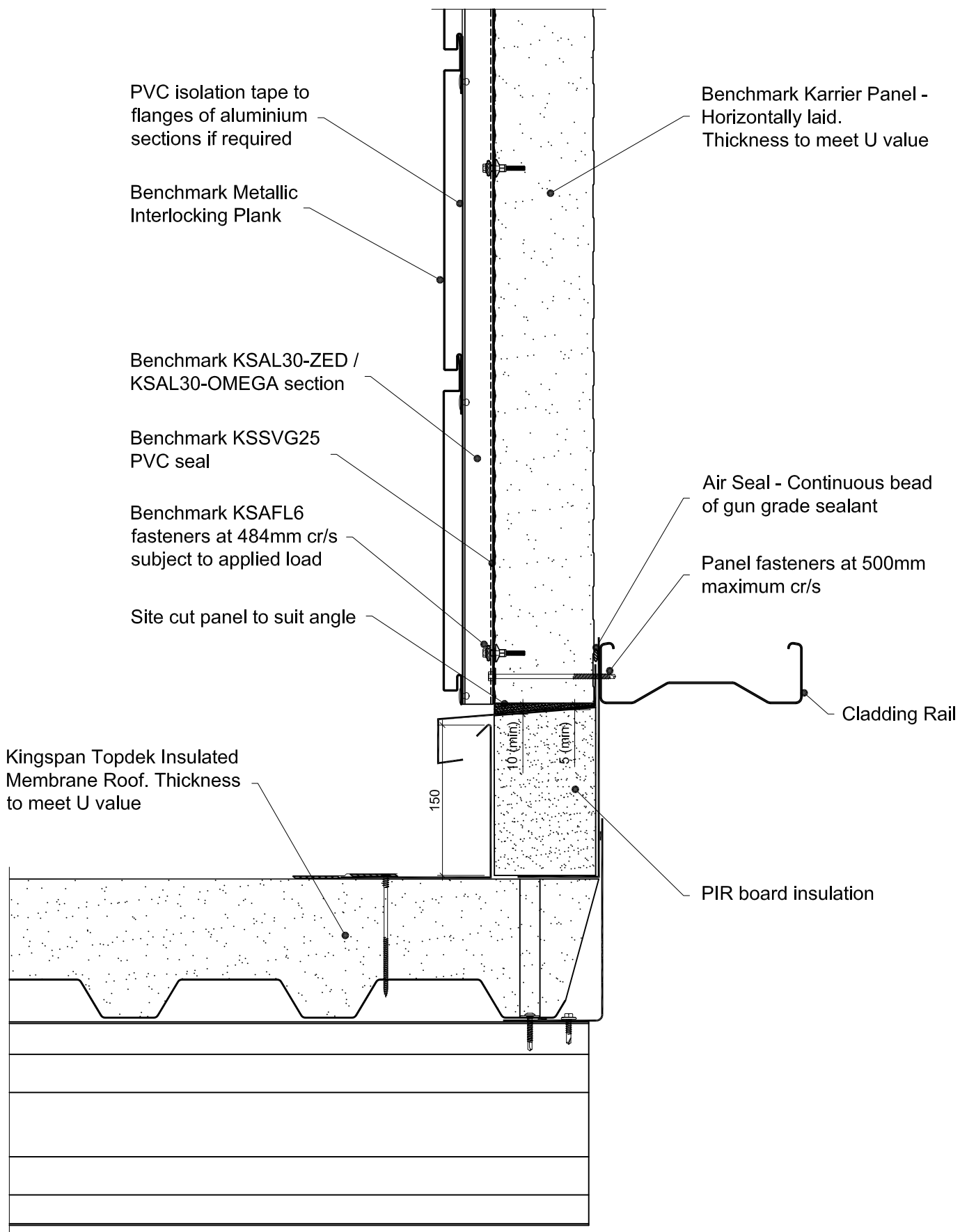
This is a generic construction detail. Supporting (secondary) steelwork member section types and sizes are indicative only. Secondary steelwork is typically provided by the Structural Steelwork Contractor.

Project:	
System: Metallic Interlocking Plank + Karrier Panel	Greenfield Business Park No.2 Greenfield, Holywell Flintshire. CH8 7GJ Tel: 01352 716 100 Fax: 01352 710 161 Technical: 0800 970 9036 Email: technical@kingspanbenchmark.com Website: www.kingspanbenchmark.com
Drawing Title: Soffit Details	
Drawn By: BT	Date: 18/08/2015
Drawing N°. MIP Hz KP Hz 019	Rev: 0



By Kingspan

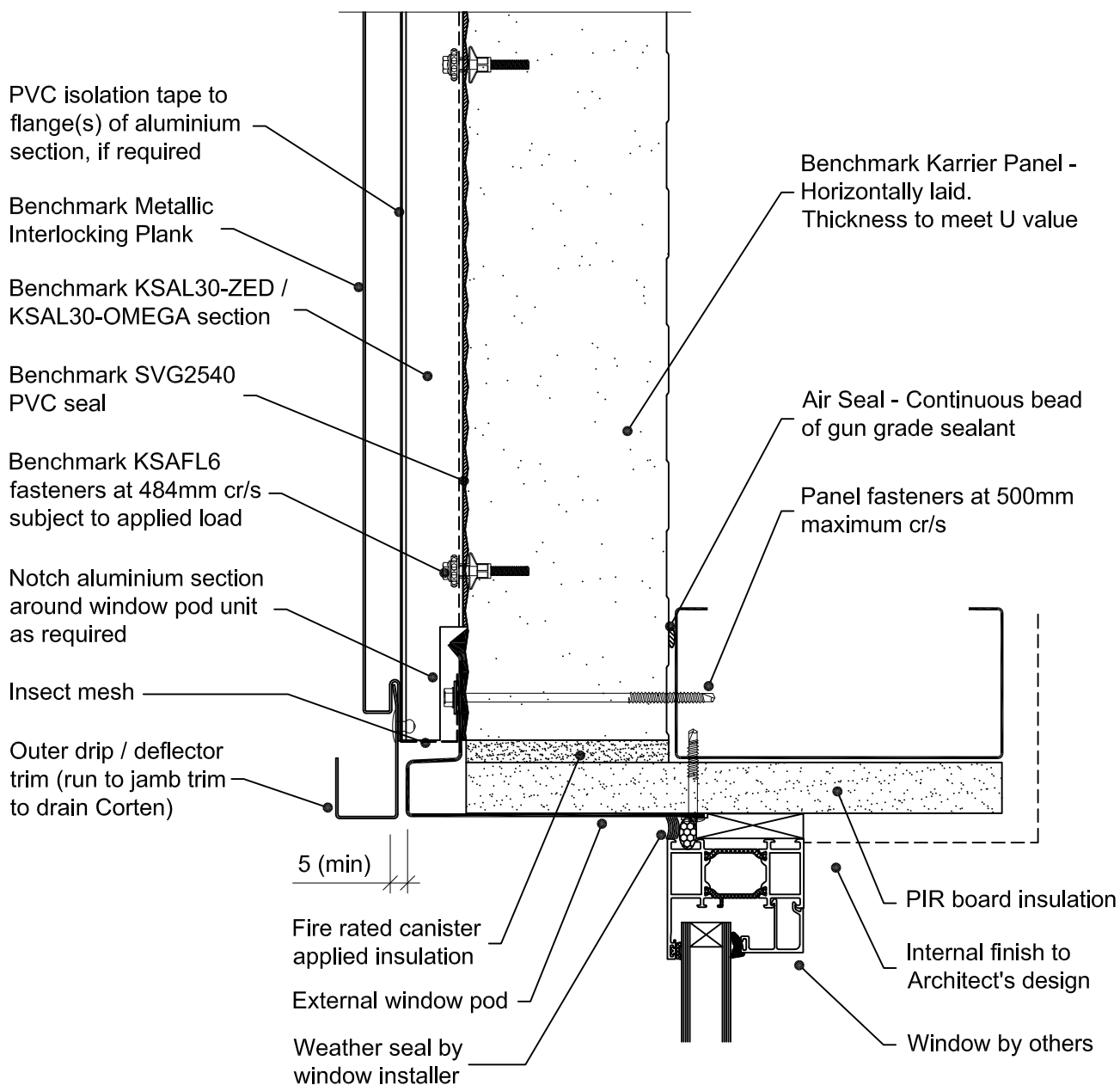
© Kingspan 2013



This is a generic construction detail. Supporting steelwork member section types and sizes are indicative only. Steelwork is typically provided by the Structural Steelwork Contractor.

Project:		Greenfield Business Park No.2	
System: Metallic Interlocking Plank + Karrier Panel		Greenfield, Holywell	
Drawing Title: Spandrel Detail		Flintshire. CH8 7GJ	
Drawn By: BT		Tel: 01352 716 100	
Date: 18/08/2015		Fax: 01352 710 161	
Drawing N°: MIP Hz KP Hz 020		Technical: 0800 970 9036	
Rev: 0		Email: technical@kingspanbenchmark.com	
		Website: www.kingspanbenchmark.com	

© Kingspan 2013



This is a generic construction detail. Supporting (secondary) steelwork member section types and sizes are indicative only. Secondary steelwork is typically provided by the Structural Steelwork Contractor.

Project:

System: Metallic Interlocking Plank + Karrier Panel

Drawing Title: Window Head - Corten

Drawn By: BT

Date: 18/08/2015

Drawing N°. MIP Hz KP Hz 022

Rev: 0

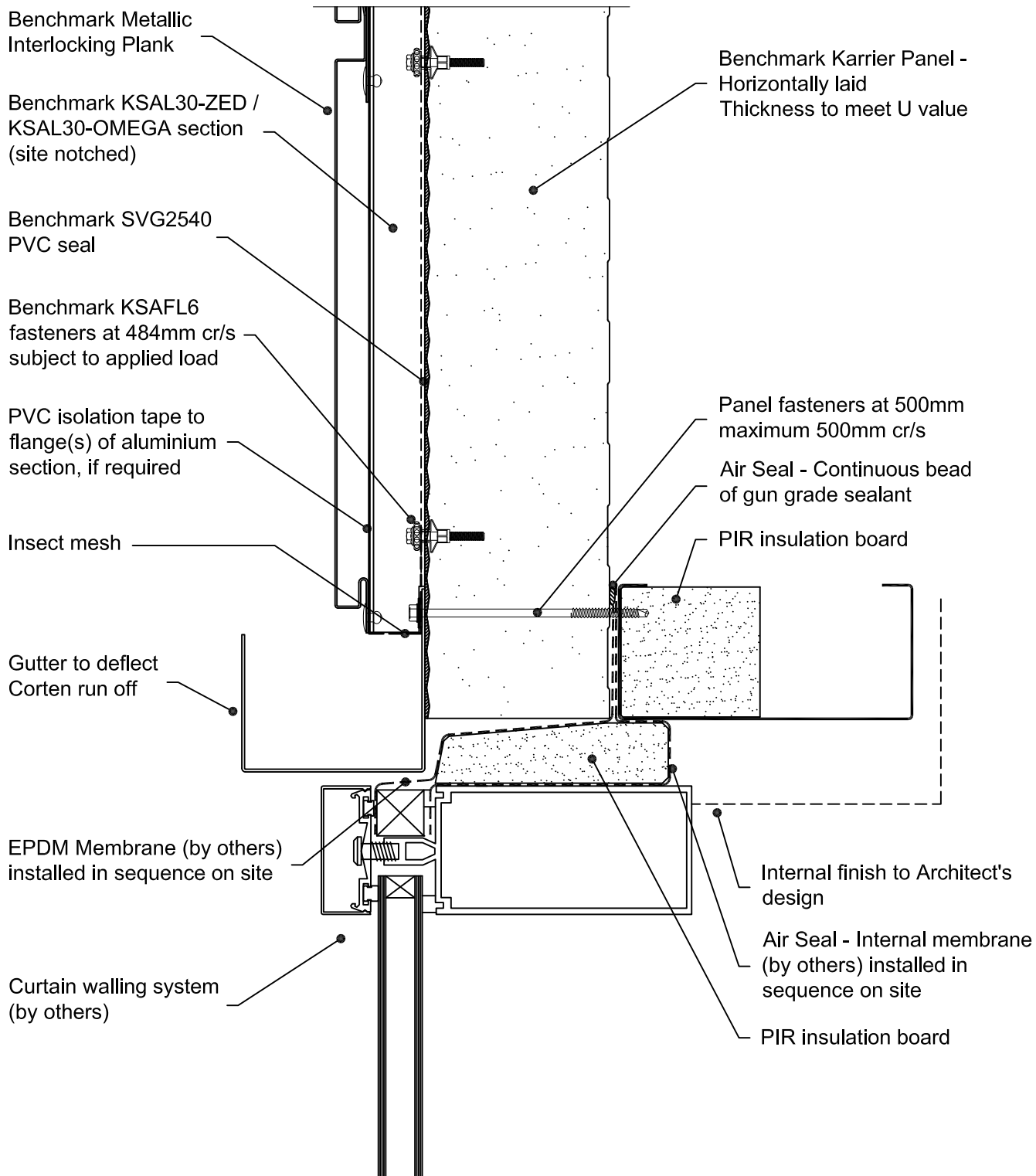
Greenfield Business Park No.2
Greenfield, Holywell
Flintshire, CH8 7GJ
Tel: 01352 716 100
Fax: 01352 710 161

Technical: 0800 970 9036
Email: technical@kingspanbenchmark.com
Website: www.kingspanbenchmark.com




By Kingspan

© Kingspan 2013



This is a generic construction detail. Supporting (secondary) steelwork member section types and sizes are indicative only. Secondary steelwork is typically provided by the Structural Steelwork Contractor.

Project:		Greenfield Business Park No.2 Greenfield, Holywell Flintshire, CH8 7GJ Tel: 01352 716 100 Fax: 01352 710 161 Technicat: 0800 970 9036 Email: technical@kingspanbenchmark.com Website: www.kingspanbenchmark.com		 By Kingspan © Kingspan 2011
System: Metallic Interlocking Plank + Karrier Panel				
Drawing Title: Curtain Wall Head - Corten				
Drawn By: BT	Date: 18/08/2015			
Drawing N°. MIP Hz KP Hz 023	Rev: 0			

Benchmark Corten
Interlocking Plank

PVC isolation tape to
flange(s) of aluminium
section, if required

Benchmark KSAL30-ZED /
KSAL30-OMEGA section
(site notched)

Benchmark SVG2540 PVC seal

Benchmark KSAFL6
fasteners at 484mm cr/s
subject to applied load

Benchmark KSAFL6
fasteners at 484mm cr/s
subject to applied load

Insect mesh

Gutter to deflect
Corten run off

Closure trim

Benchmark KSAFL6
fasteners at 484mm cr/s
subject to applied load

Benchmark PPC Aluminium
Interlocking Plank

Benchmark KSAL30-ZED /
KSAL30-OMEGA section
(site notched)

0 100mm

Benchmark Karrier Panel -
Horizontally laid.
Thickness to meet U value

Project:

System: Metallic Interlocking Plank + Karrier Panel

Drawing Title: Corten to Aluminium - Horizontal Interface

Drawn By: AE

Date: 18/08/2015

Drawing N°: MIP Hz KP Hz 024

Rev: 0

Greenfield Business Park No.2
Greenfield, Holywell
Flintshire, CH8 7GJ
Tel: 01352 716 100
Fax: 01352 710 161

Technical: 0800 970 9036
Email: technical@kingspanbenchmark.com
Website: www.kingspanbenchmark.com

BENCHMARK

By Kingspan

© Kingspan 2013

Benchmark Metallic Interlocking Plank

PVC isolation tape to flange(s) of aluminium section, if required

Benchmark KSAL30-ZED / KSAL30-OMEGA section

Benchmark SVG2540 PVC seal

Panel bearers at ends of panel and at 1500mm maximum cr/s

Air seal - EPDM membrane sealed to inside face of Karrier Panels

Mineral fibre insulation



Retaining profile

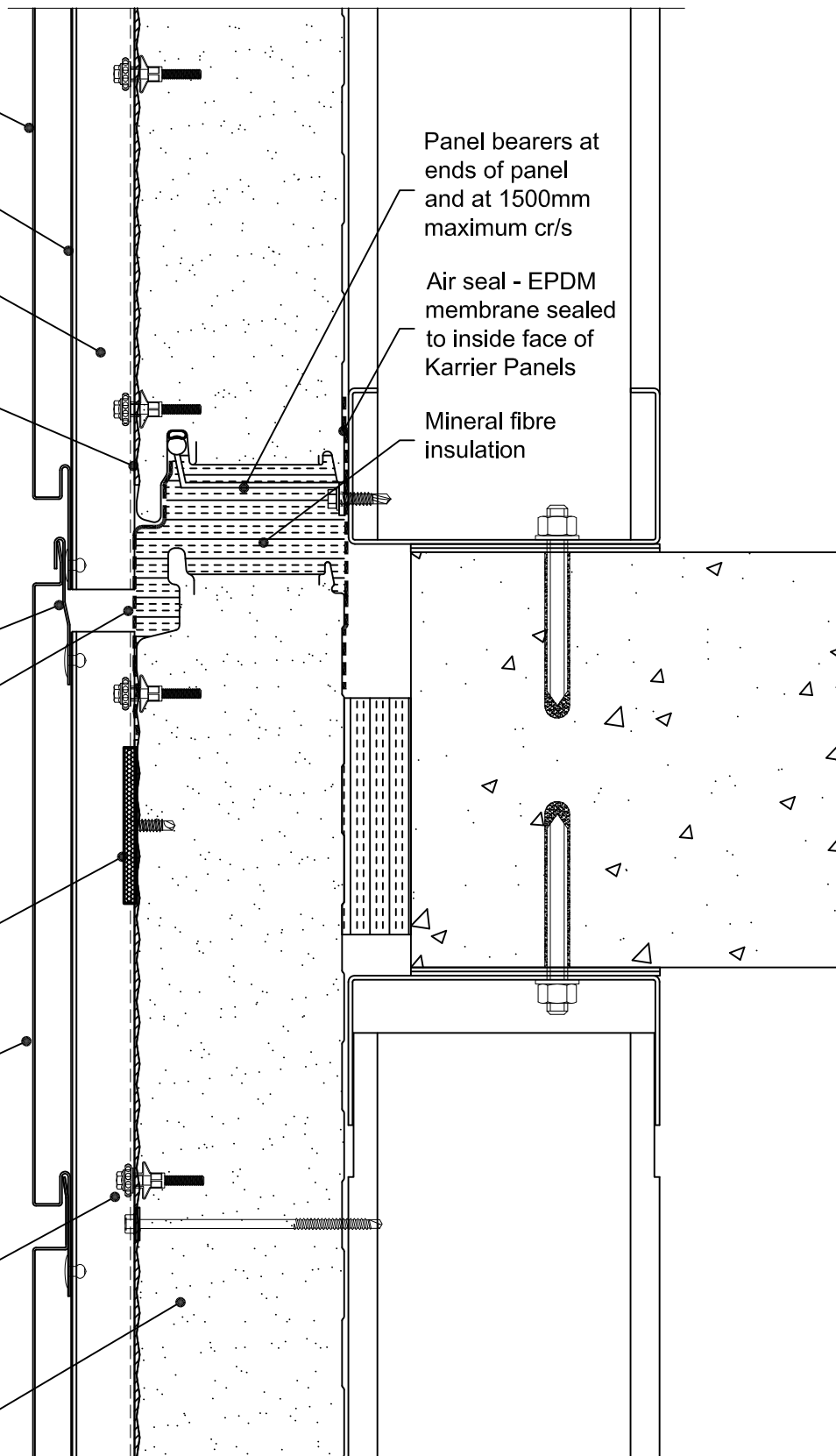
EPDM Membrane

Ventilated fire barrier - high expansion intumescent strip

Benchmark Metallic Interlocking Plank

Benchmark KSA FL6 fasteners at 484mm cr/s subject to wind loads

Benchmark Karrier Panel - Horizontally laid. Thickness to meet U Value.



This is a generic construction detail. Supporting (secondary) steelwork member section types and sizes are indicative only. Secondary steelwork is typically provided by the Structural Steelwork Contractor.

Project:

System: Metallic Interlocking Plank + Karrier Panel

Drawing Title: Horizontal Movement Joint

Drawn By: BT

Date: 18/08/2015

Drawing N°: MIP Hz KP Hz 100

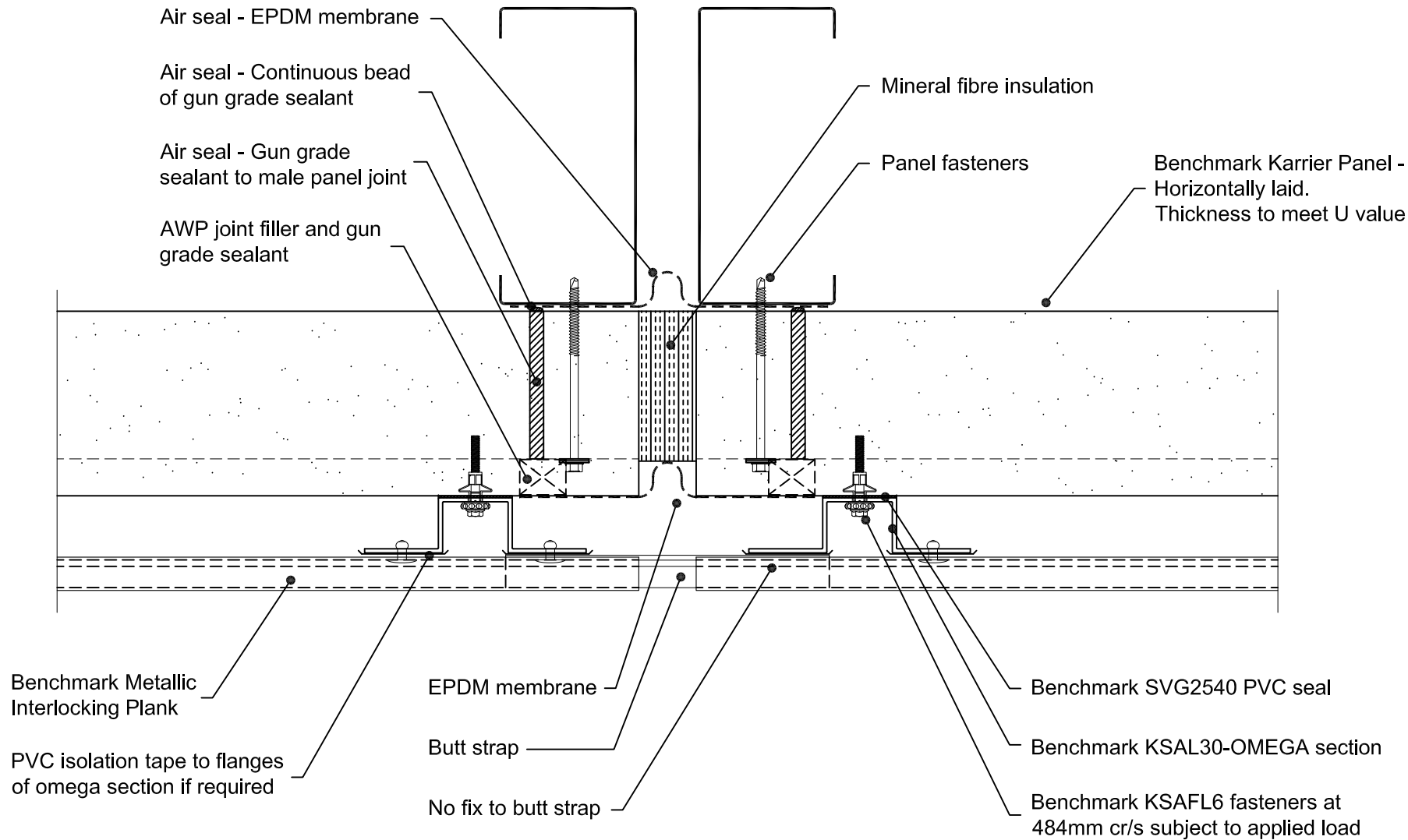
Rev: 0

Greenfield Business Park No.2
Greenfield, Holywell
Flintshire, CH8 7GJ
Tel: 01352 716 100
Fax: 01352 710 161
Technical: 0800 970 9036
Email: technical@kingspanbenchmark.com
Website: www.kingspanbenchmark.com



By Kingspan

© Kingspan 2013



This is a generic construction detail. Supporting (secondary) steelwork member section types and sizes are indicative only. Secondary steelwork is typically provided by the Structural Steelwork Contractor.

Project:	
System:	Metallic Interlocking Plank + KP
Drawing Title:	Vertical Movement Joint
Drawn By:	AE
Date:	18/08/2015
Drawing N°:	MIP Hz KP Hz 101
Rev:	0
<p>Greenfield Business Park No.2 Greenfield, Holywell Flintshire, CH8 7GJ Tel: 01352 716 100 Fax: 01352 710 161 Technical: 0800 970 9036 Email: technical@kingspanbenchmark.com Website: www.kingspanbenchmark.com</p>	
<p>BENCHMARK By Kingspan © Kingspan 2013</p>	

Benchmark Karrier Panel -
Horizontally laid
Thickness to meet U value

Benchmark Metallic
Interlocking Plank

PVC isolation tape to
flange(s) of aluminium
section, if required

Benchmark KSAL30-ZED /
KSAL30-OMEGA section

Benchmark SVG2540 PVC seal

Benchmark KSAFL6
fasteners at 484mm cr/s
subject to applied load

Benchmark panel bearers at
each end of Karrier Panels and
at 1500mm maximum cr/s

Fire rated canister applied
insulation

Soffit return flashing

Benchmark Metallic
Interlocking Drip Plank

Air Seal - Continuous
bead of gun grade
sealant

Air Seal - Continuous
bead of gun grade sealant

Benchmark Karrier Panel -
Thickness to meet U value

Benchmark KSAL30-ZED /
KSAL30-OMEGA section

Benchmark Metallic
Interlocking Plank

Corner cassette leg lengths may need to be site
measured to cater for construction tolerances

This is a generic construction detail. Supporting (secondary)
steelwork member section types and sizes are indicative only.
Secondary steelwork is typically provided by the Structural
Steelwork Contractor.

Project:

System: Metallic Interlocking Plank + Karrier Panel

Drawing Title: Drip to Soffit

Drawn By: AE

Date: 18/08/2015

Drawing N°. MIP Hz KP Hz 102

Rev: 0

Greenfield Business Park No.2
Greenfield, Holywell
Flintshire, CH8 7GJ
Tel: 01352 716 100
Fax: 01352 710 161

Technical: 0800 970 9036
Email: technical@kingspanbenchmark.com
Website: www.kingspanbenchmark.com



By Kingspan

© Kingspan 2013