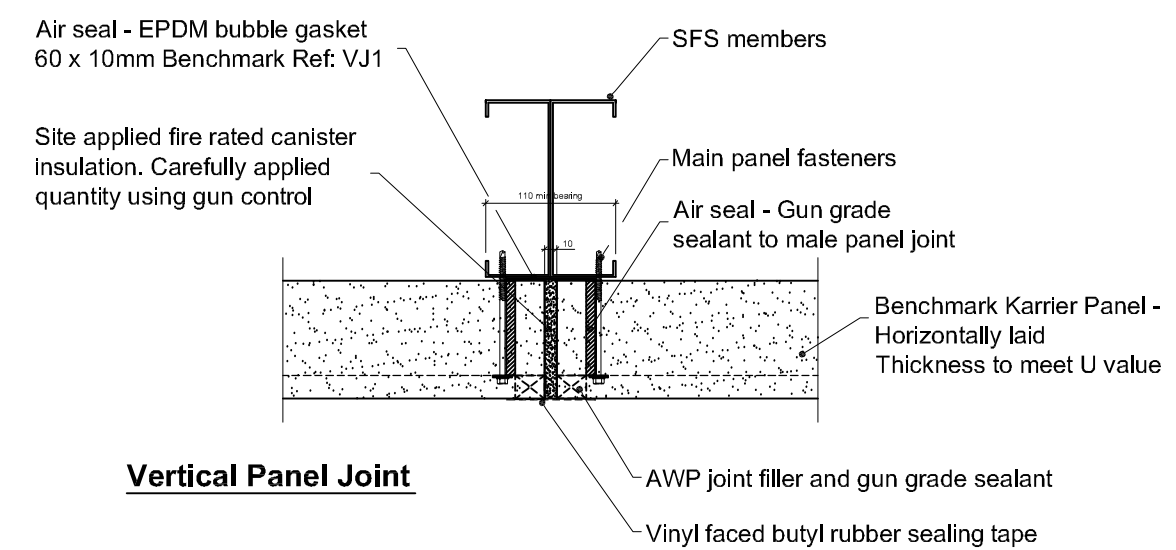
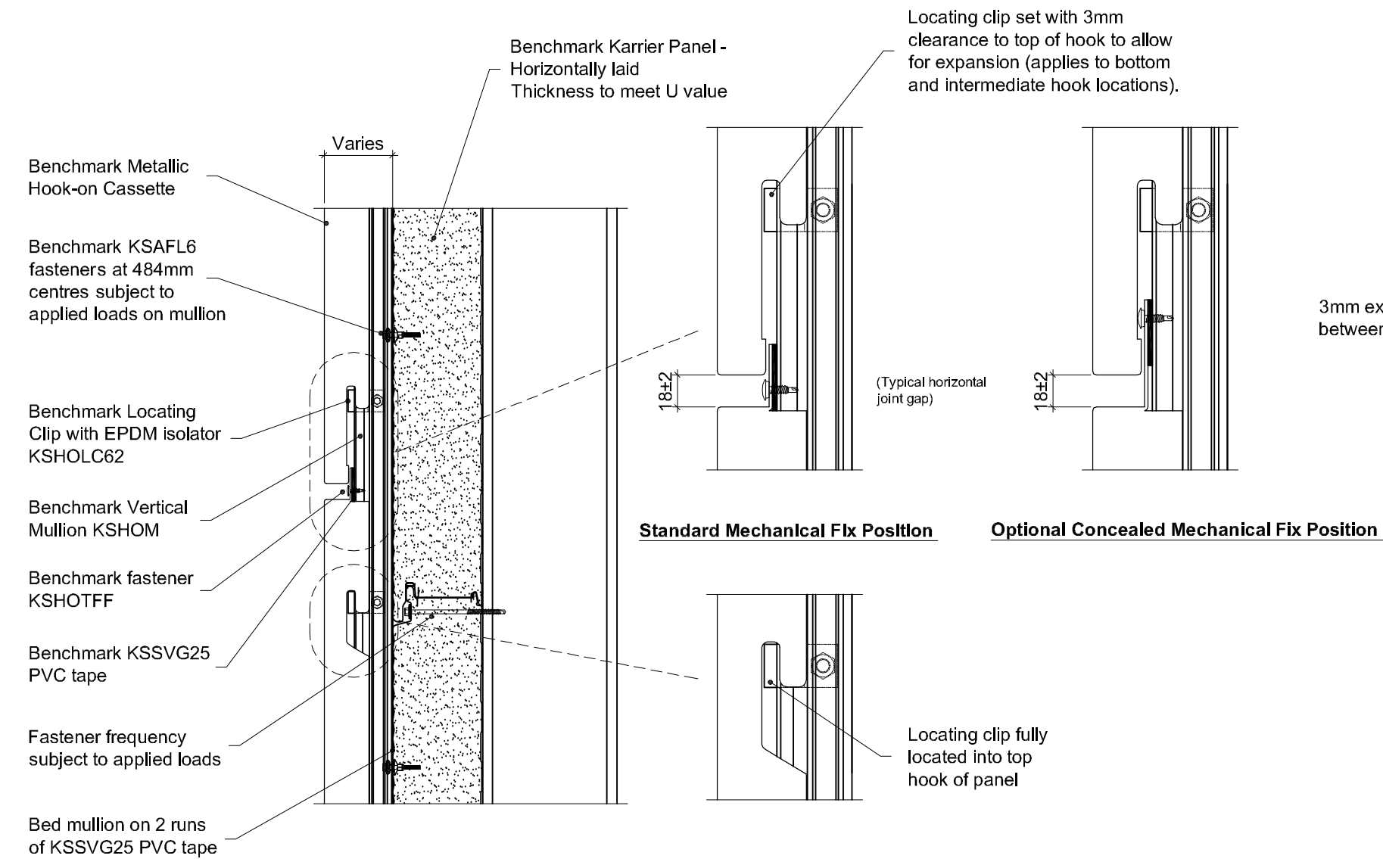


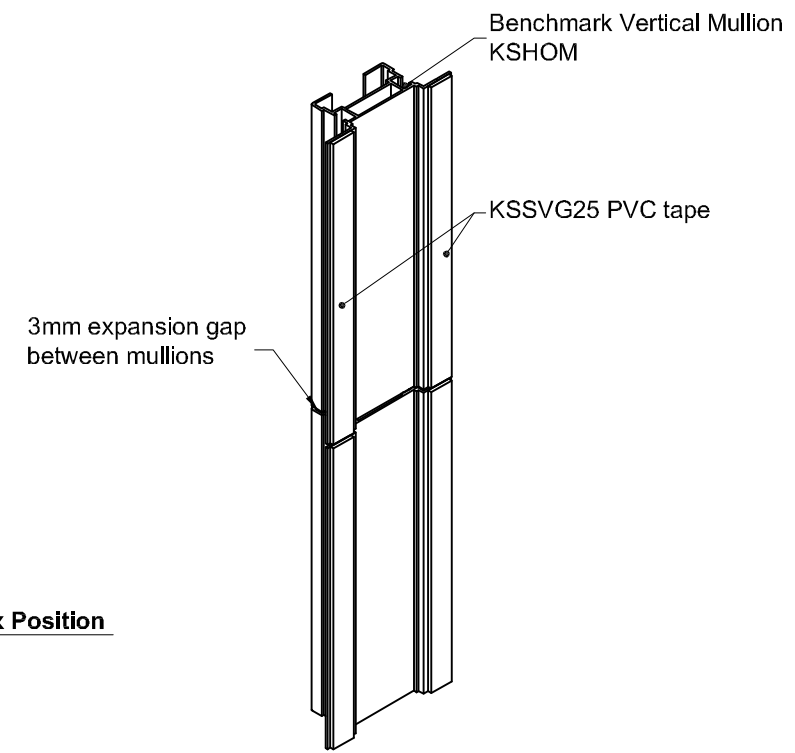
Horizontal Section



Vertical Panel Joint



Vertical Section



**KSSVG25 PVC tape to rear of
Benchmark Vertical Mullion KSHOM**

Material, Gauges and Finishes and Colours
Please refer to latest product guide and website.

Panel Sizes and Tolerances
Depends on material choice - please refer to current data sheet.

Structural Rails
Design for lateral loads and for gravity load of façade system. System weights are provided in current product data sheets.

Benchmark KSAFL6 Fasteners
Must not be positioned less than 100mm from a site cut edge of the Karrier Panel.

Dissimilar Metals
Contact between dissimilar metals must be prevented with PVC isolation tape.

Handling
The surface of certain metals such as copper are susceptible to finger marking. Suitable clean gloves should be worn when handling these materials.

Open Edges
Open edges should be fitted with insect mesh.

Cavity Barriers
Cavity barriers are not supplied with the Benchmark Facade system and must be specified and sourced separately.

Steelwork Tolerances
The permissible steelwork tolerance between the bearing planes of adjacent supports is ± 5mm

This is a generic construction detail. Supporting (secondary) steelwork member section types and sizes are indicative only. Secondary steelwork is typically provided by the Structural Steelwork Contractor.

Project:		Greenfield Business Park No.2 Greenfield, Holywell Flintshire. CH8 7GJ Tel: 01352 716 100 Fax: 01352 710 161 Technical: 0800 970 9036 Email: technical@kingspanbenchmark.com Website: www.kingspanbenchmark.com	
System: Karrier Panel + Metallic Hook-on Cassette		By Kingspan	
Drawing Title: System Layout		© Kingspan 2013	
Drawn By: BT	Date: 26/07/2012		
Drawing N°. MHC BM KP Hz 001	Rev: A		



Benchmark Locating Clip with EPDM isolator KSHOLC62

Benchmark Vertical Mullion KSHOM

Benchmark Metallic Hook-on Cassette

Benchmark Karrier Panel - Horizontally laid Thickness to meet U value

Bed Mullion on 2 runs of KSSVG25 PVC tape

Benchmark KSAFL6 fasteners at nominal 484mm centres subject to applied loads on mullion

External drip flashing with sealed joints. Sealed to inner drip flashing

Insect mesh

Inner drip flashing with sealed joints

Air Seal - Compressible foam tape

Ground Floor Slab

SFS Members

Air Seal - EPDM membrane sealed to inside of Karrier Panel

Benchmark Panel Bearers. Locate at each end of panel and at 1500mm maximum centres

PIR Board Insulation

EPDM membrane sealed to slab

This is a generic construction detail. Supporting (secondary) steelwork member section types and sizes are indicative only. Secondary steelwork is typically provided by the Structural Steelwork Contractor.

Project:

System: Karrier Panel + Metallic Hook-on Cassette

Drawing Title: Drip Detail

Drawn By: BT

Date: 19/07/2012

Drawing N°. MHC BM KP Hz 002

Rev: 0

Greenfield Business Park No.2

Greenfield, Holywell

Flintshire, CH8 7GJ

Tel: 01352 716 100

Fax: 01352 710 161

Technical: 0800 970 9036

Email: technical@kingspanbenchmark.com

Website: www.kingspanbenchmark.com



By Kingspan

© Kingspan 2013

Benchmark Locating Clip with EPDM isolator KSHOLC62

Benchmark Vertical Mullion KSHOM

Benchmark Metallic Hook-on Cassette

Benchmark Karrier Panel - Horizontally laid
Thickness to meet U value

Bed Mullion on 2 runs of KSSVG25 PVC tape

Benchmark KSAFL6 fasteners at nominal 484mm centres subject to applied loads on mullion

External drip flashing with sealed joints. Sealed to inner drip flashing

10 (nom)

Insect mesh

Inner drip flashing with sealed joints

Air Seal - Compressible foam tape

Brickwork

SFS Members

Air Seal - EPDM membrane sealed to inside of Karrier Panel

Benchmark Panel Bearers. Locate at each end of panel and at 1500mm maximum centres

PIR Board Insulation

EPDM membrane sealed to slab

This is a generic construction detail. Supporting (secondary) steelwork member section types and sizes are indicative only. Secondary steelwork is typically provided by the Structural Steelwork Contractor.

Project:

System: Karrier Panel + Metallic Hook-on Cassette

Drawing Title: Drip Detail

Drawn By: BT

Date: 19/07/2012

Drawing N°. MHC BM KP Hz 003

Rev: 0

Greenfield Business Park No.2

Greenfield, Holywell

Flintshire, CH8 7GJ

Tel: 01352 716 100

Fax: 01352 710 161

Technical: 0800 970 9036

Email: technical@kingspanbenchmark.com

Website: www.kingspanbenchmark.com



By Kingspan

© Kingspan 2013

Benchmark Karrier Panel -
Horizontally laid
Thickness to meet U value

Benchmark Vertical Mullion KSHOM

Benchmark Locating Clip with
EPDM isolator KSHOLC62

18±2

Air seal - Gun grade
sealant to male panel joint

Air Seal - Continuous bead
of gun grade sealant

SFS Members

Benchmark Metallic Hook-on Cassette

Panel fasteners. Frequency
subject to applied loads

AWP joint filler and gun grade sealant

Fire rated canister applied insulation

Vinyl faced butyl rubber sealing tape

Benchmark KSAFL6 fasteners
at nominal 484mm centres
subject to applied loads
on mullion

18±2

Bed Mullion on 2 runs of KSSVG25 PVC tape

Benchmark Karrier Panel - Horizontally laid
Thickness to meet U value

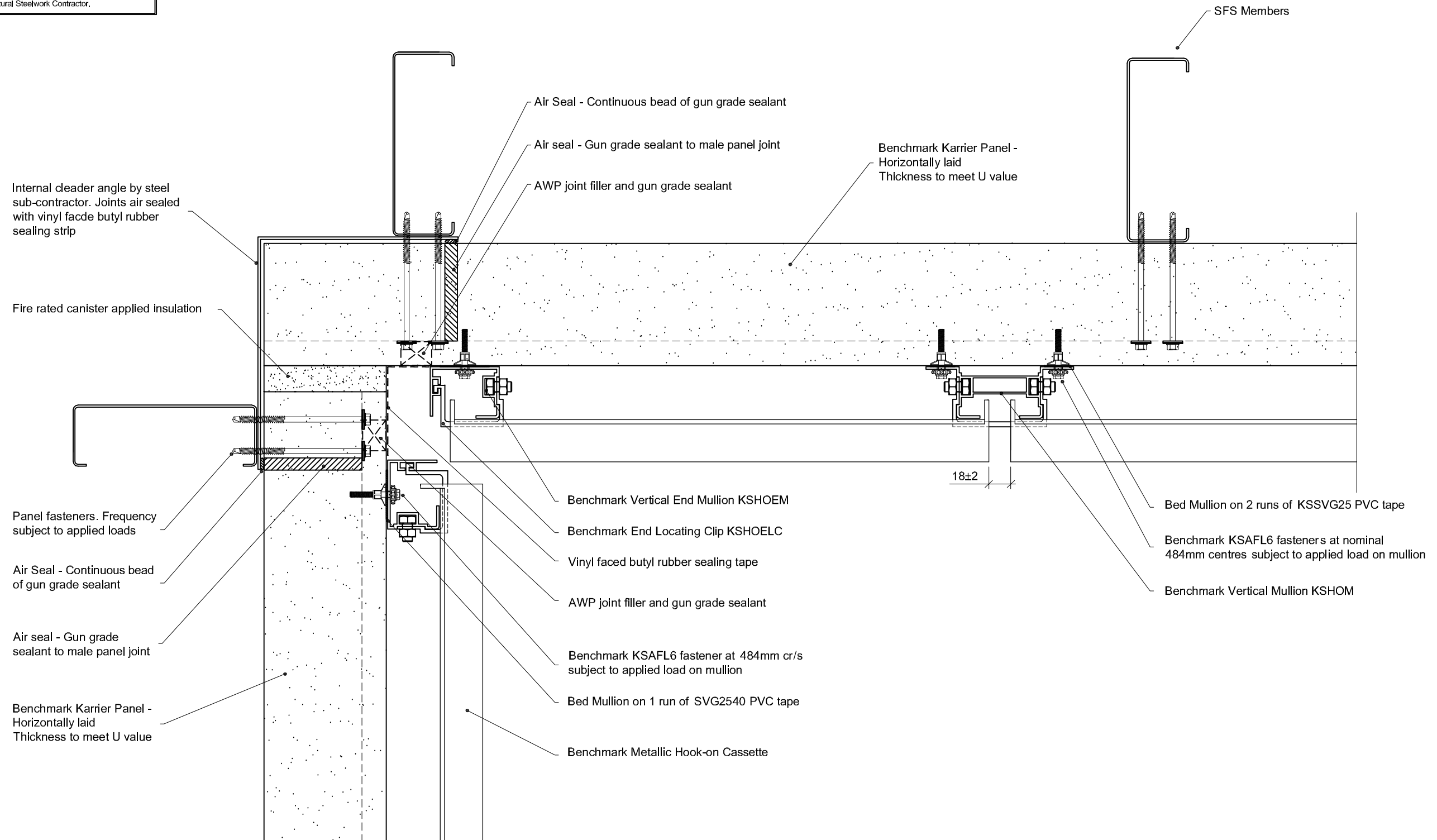
Benchmark Vertical Mullion KSHOM

Corner cassette leg lengths may need to be site
measured to cater for construction tolerances.
Long leg lengths will require additional mullions
towards the arris of the corner.

This is a generic construction detail. Supporting (secondary) steelwork
member section types and sizes are indicative only. Secondary steelwork
is typically provided by the Structural Steelwork Contractor.

Project:	
System: Karrier Panel + Metallic Hook-on Cassette	
Drawing Title: External Corner	
Drawn By: BT	Date: 19/07/2012
Drawing N°. MHC BM KP Hz 004	Rev: 0
Greenfield Business Park No.2 Greenfield, Holywell Flintshire, CH8 7GJ Tel: 01352 716 100 Fax: 01352 710 161 Technical: 0800 970 9036 Email: technical@kingspanbenchmark.com Website: www.kingspanbenchmark.com	
 By Kingspan © Kingspan 2013	

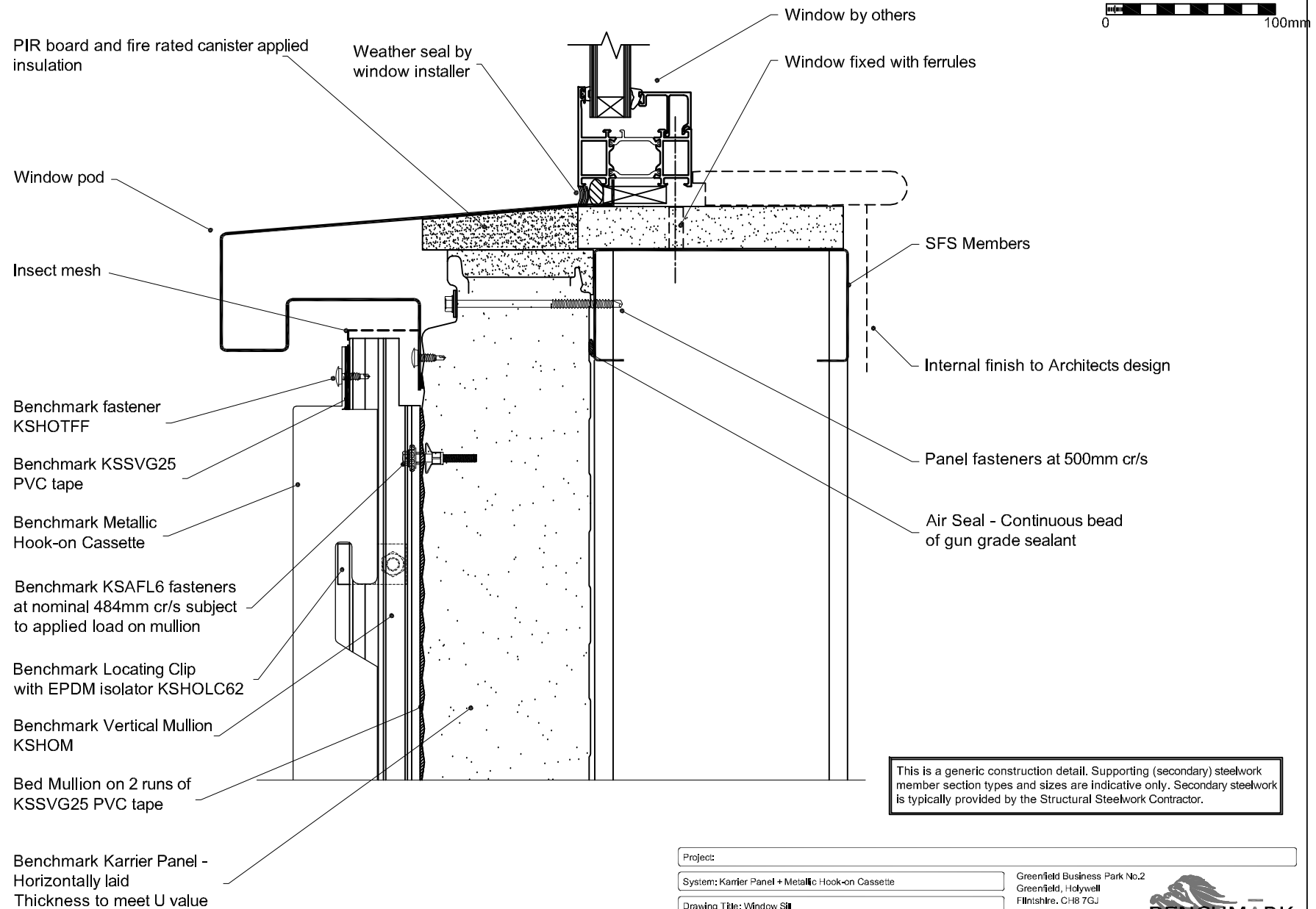
This is a generic construction detail. Supporting (secondary) steelwork member section types and sizes are indicative only. Secondary steelwork is typically provided by the Structural Steelwork Contractor.



Project:	
System: Karrier Panel + Metallic Hook-on Cassette	
Drawing Title: Internal Corner	
Drawn By: BT	Date: 19/07/2012
Drawing N°. MHC BM KP Hz 005	Rev: 0

Greenfield Business Park No.2
Greenfield, Holywell
Flintshire, CH8 7GJ
Tel: 01352 716 100
Fax: 01352 710 161
Technical: 0800 970 9036
Email: technical@kingspanbenchmark.com
Website: www.kingspanbenchmark.com

BENCHMARK
By Kingspan
© Kingspan 2013



This is a generic construction detail. Supporting (secondary) steelwork member section types and sizes are indicative only. Secondary steelwork is typically provided by the Structural Steelwork Contractor.

Project:		Greenfield Business Park No.2 Greenfield, Holywell Flintshire, CH8 7GJ Tel: 01352 716 100 Fax: 01352 710 161 Technical: 0800 970 9036 Email: technical@kingspanbenchmark.com Website: www.kingspanbenchmark.com	 By Kingspan
System: Karrier Panel + Metallic Hook-on Cassette			
Drawing Title: Window Sill			
Drawn By: BT	Date: 19/07/2012		
Drawing No. MHC BM KP Hz 006		Rev: 0	

Benchmark Vertical Mullion
KSHOM

Bed Mullion on 2 runs
of KSSVG25 PVC tape

Benchmark Metallic
Hook-on Cassette

Benchmark KSAFL6 fasteners
at nominal 484mm cr/s subject
to applied load on mullion

Benchmark Locating Clip with
EPDM isolator KSHOLC62

Gun grade butyl rubber pointing

Seal pod to face of panel with
20 x 3 butyl rubber sealant

Insect mesh

10 (nom)

External Window Pod

PIR board and fire rated
canister applied insulation

Weather Seal by Window Installer

Benchmark Karrier Panel -
Horizontally laid
Thickness to meet U value

Air Seal - Continuous bead
of gun grade sealant

Benchmark Panel Bearers.
Locate at each end of panel
and at 1500mm maximum centres

Internal Finish To Architects Design

PIR Board Insulation

Window Fixed With Ferrules

Window By Others

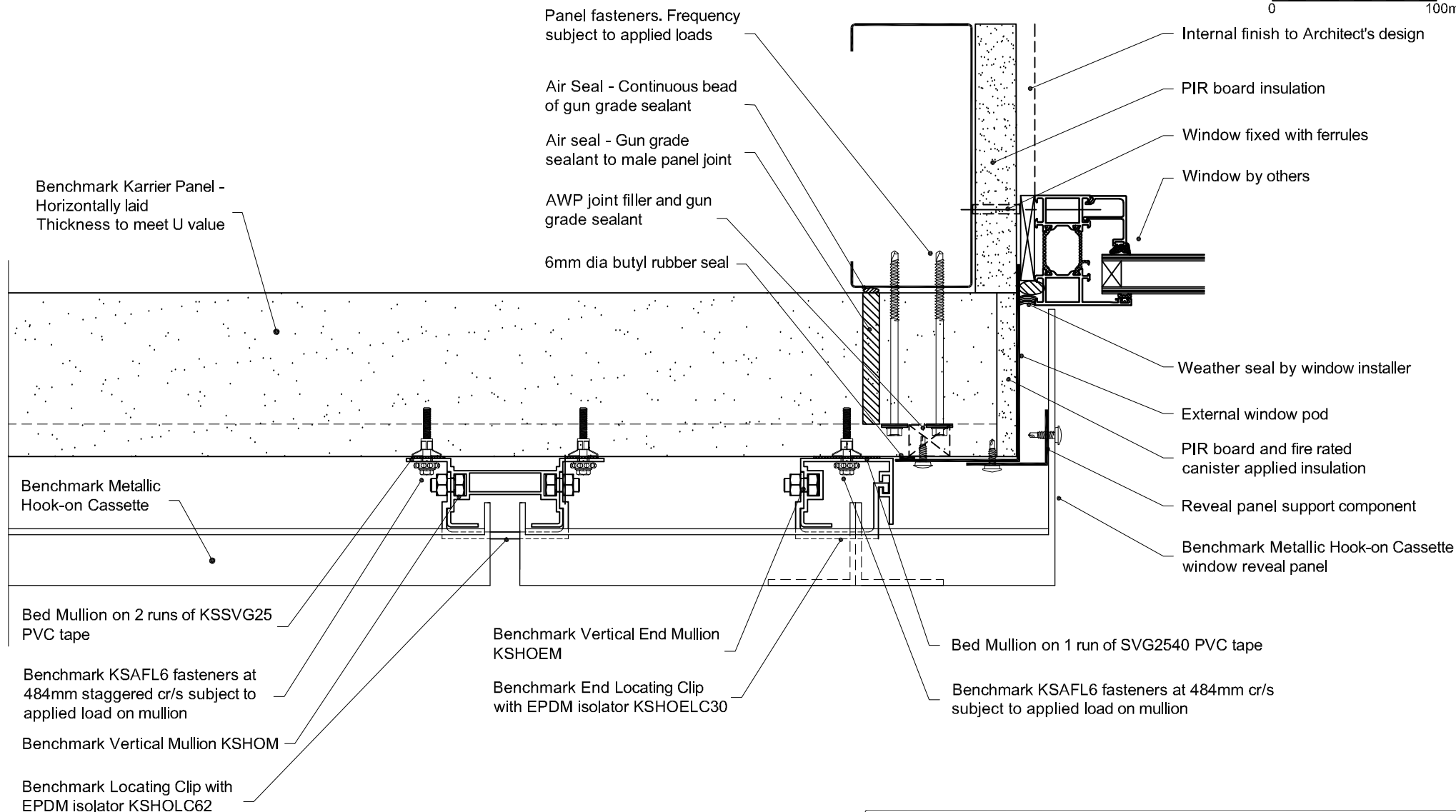


This is a generic construction detail. Supporting (secondary) steelwork member section types and sizes are indicative only. Secondary steelwork is typically provided by the Structural Steelwork Contractor.


Project:	
System: Karrier Panel + Metallic Hook-on Cassette	
Drawing Title: Window Head	
Drawn By: BT	Date: 19/07/2012
Drawing N°. MHC BM KP Hz 007	Rev: 0

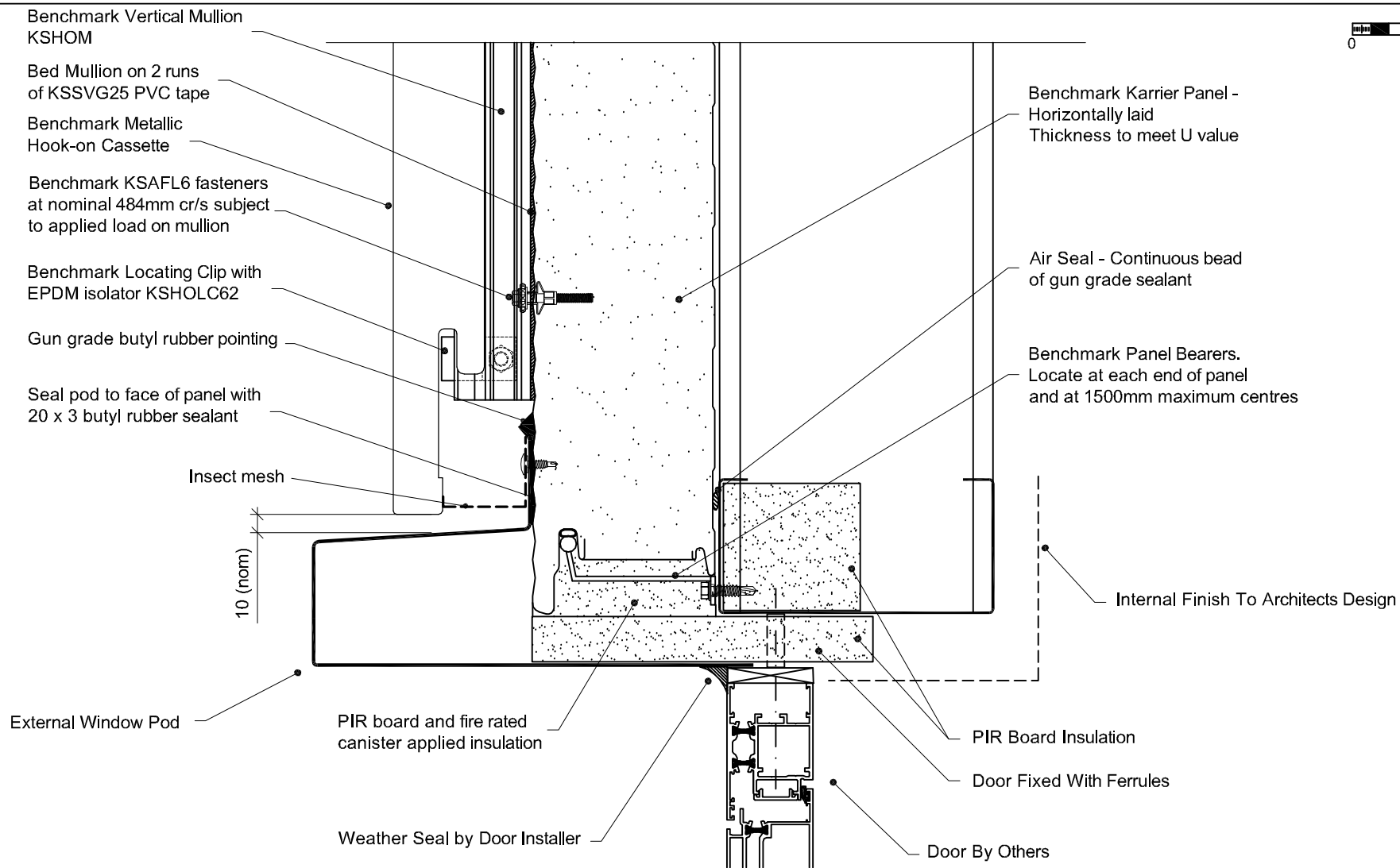
Greenfield Business Park No.2
Greenfield, Holywell
Flintshire, CH8 7GJ
Tel: 01352 716 100
Fax: 01352 710 161
Technical: 0800 970 9036
Email: technical@kingspanbenchmark.com
Website: www.kingspanbenchmark.com

BENCHMARK
By Kingspan
© Kingspan 2013




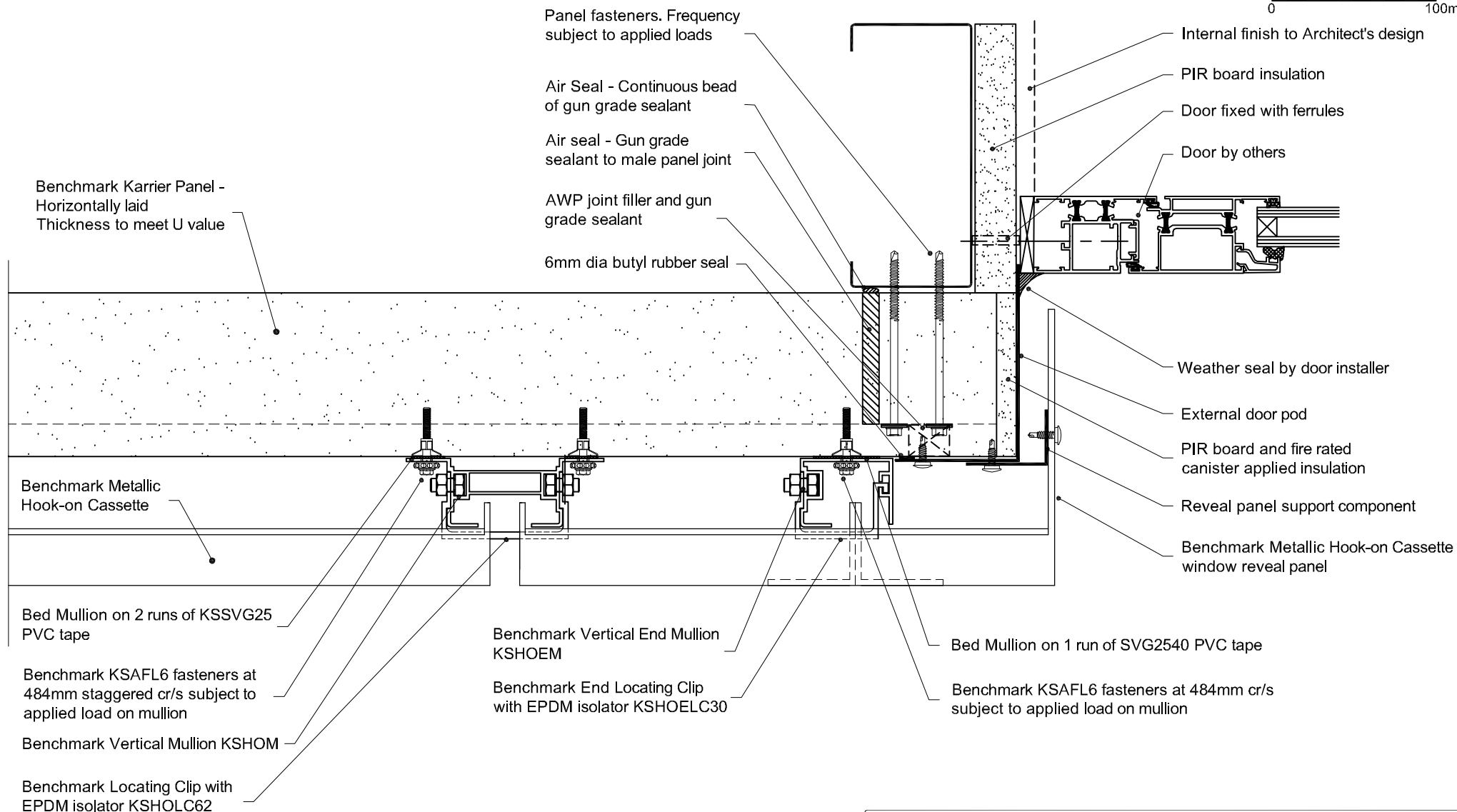
This is a generic construction detail. Supporting (secondary) steelwork member section types and sizes are indicative only. Secondary steelwork is typically provided by the Structural Steelwork Contractor.

Project:			
System: Karrier Panel + Metallic Hook-on Cassette		Greenfield Business Park No.2 Greenfield, Holywell Flintshire, CH8 7GJ Tel: 01352 716 100 Fax: 01352 710 161 Technical: 0800 970 9036 Email: technical@kingspanbenchmark.com Website: www.kingspanbenchmark.com	
Drawing Title: Window Jamb		 By Kingspan © Kingspan 2013	
Drawn By: BT	Date: 19/07/2012		
Drawing N°: MHC BM KP Hz 008	Rev: 0		



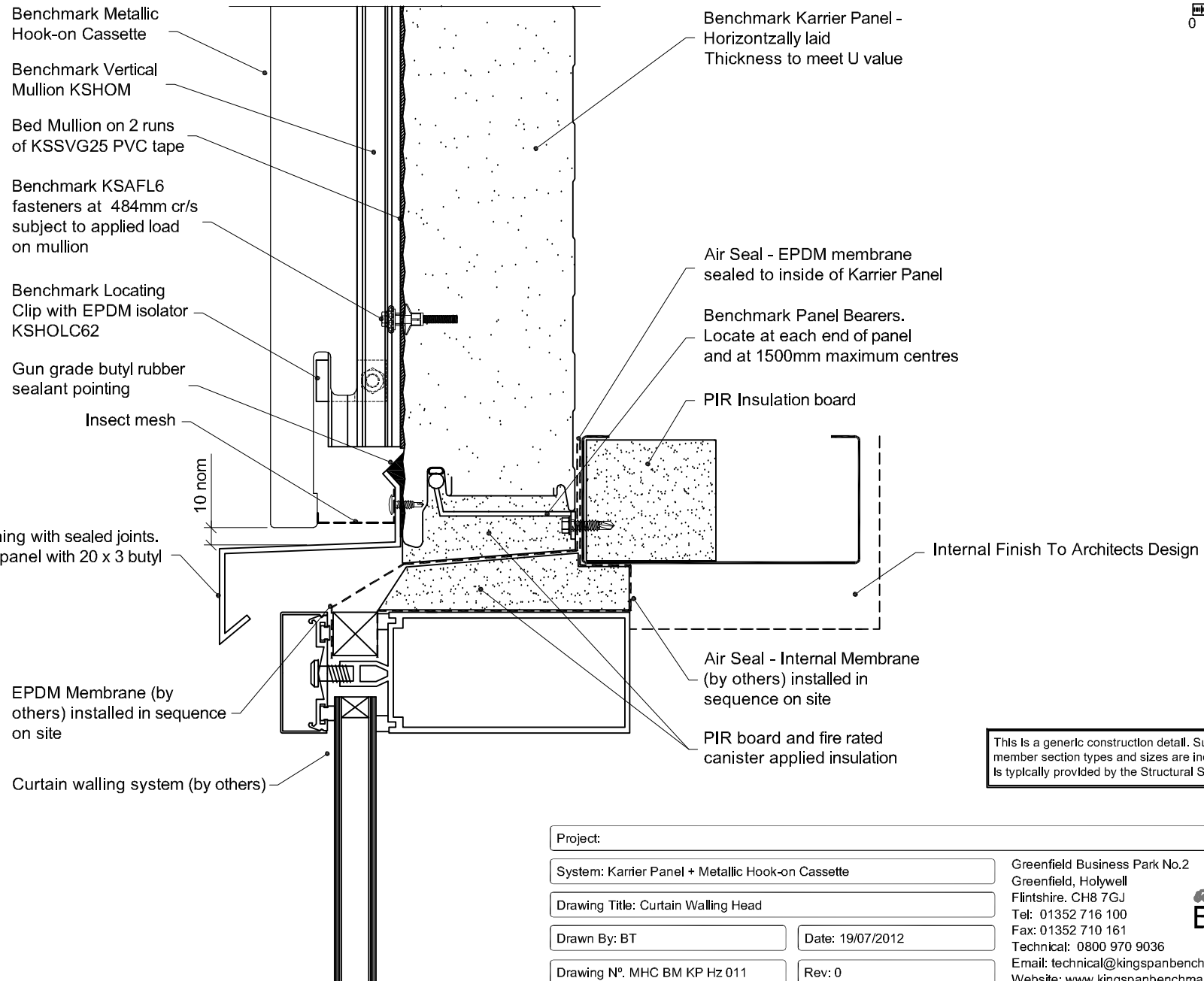
This is a generic construction detail. Supporting (secondary) steelwork member section types and sizes are indicative only. Secondary steelwork is typically provided by the Structural Steelwork Contractor.

Project:		Greenfield Business Park No.2 Greenfield, Holywell Flintshire, CH8 7GJ Tel: 01352 716 100 Fax: 01352 710 161 Technical: 0800 970 9036 Email: technical@kingspanbenchmark.com Website: www.kingspanbenchmark.com	
System: Karrier Panel + Metallic Hook-on Cassette		 By Kingspan © Kingspan 2013	
Drawing Title: Door Head			
Drawn By: BT	Date: 19/07/2012		
Drawing N°: MHC BM KP Hz 009	Rev: 0		



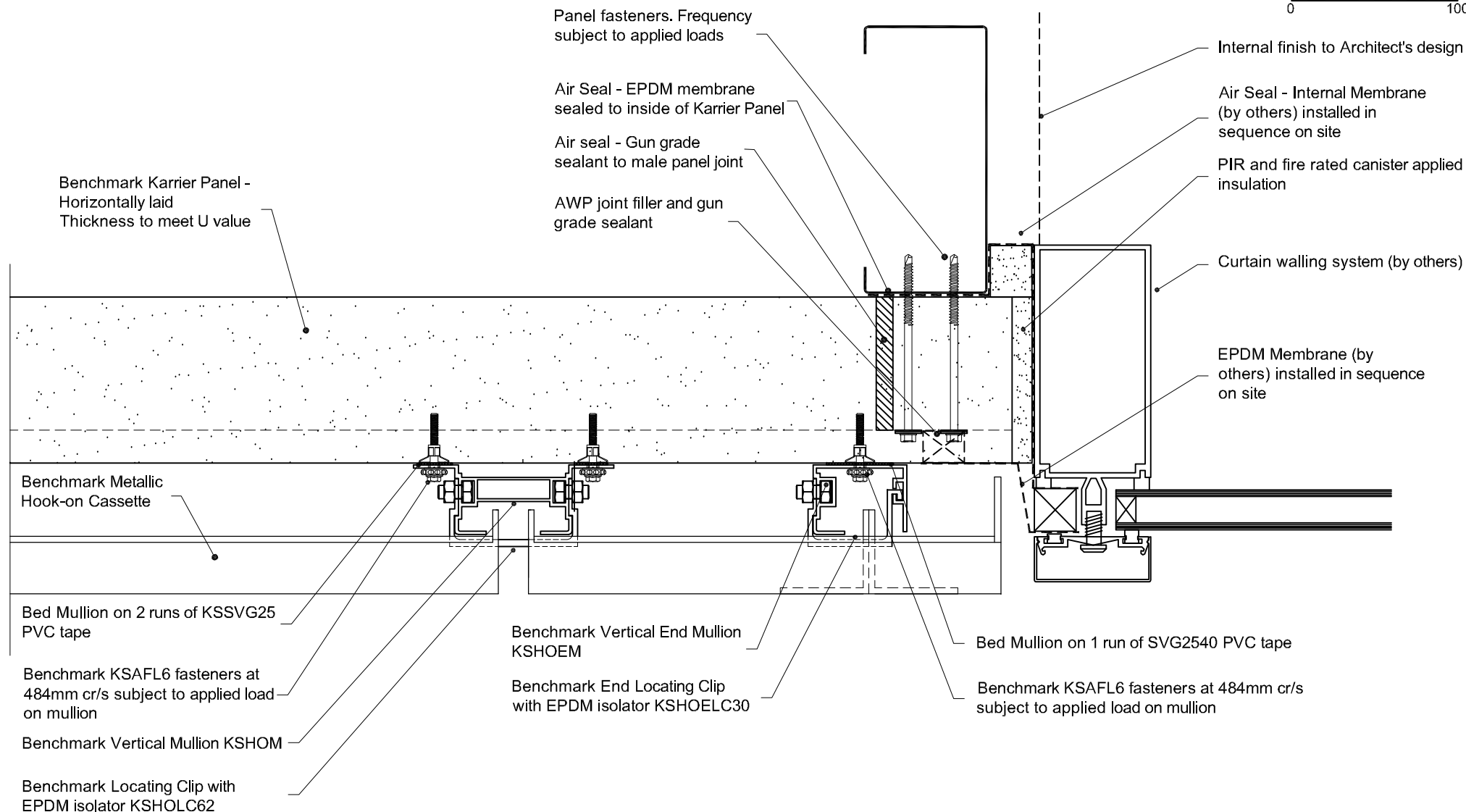
This is a generic construction detail. Supporting (secondary) steelwork member section types and sizes are indicative only. Secondary steelwork is typically provided by the Structural Steelwork Contractor.

Project:			
System: Karrier Panel + Metallic Hook-on Cassette		Greenfield Business Park No.2 Greenfield, Holywell Flintshire, CH8 7GJ Tel: 01352 716 100 Fax: 01352 710 161 Technical: 0800 970 9036 Email: technical@kingspanbenchmark.com Website: www.kingspanbenchmark.com	
Drawing Title: Door Jamb			
Drawn By: BT	Date: 19/07/2012		
Drawing N°: MHC BM KP Hz 010	Rev: 0		



This is a generic construction detail. Supporting (secondary) steelwork member section types and sizes are indicative only. Secondary steelwork is typically provided by the Structural Steelwork Contractor.

Project:			
System: Karrier Panel + Metallic Hook-on Cassette		Greenfield Business Park No.2 Greenfield, Holywell Flintshire, CH8 7GJ Tel: 01352 716 100 Fax: 01352 710 161 Technical: 0800 970 9036 Email: technical@kingspanbenchmark.com Website: www.kingspanbenchmark.com	
Drawing Title: Curtain Walling Head		 © Kingspan 2013	
Drawn By: BT	Date: 19/07/2012		
Drawing N°. MHC BM KP Hz 011	Rev: 0		



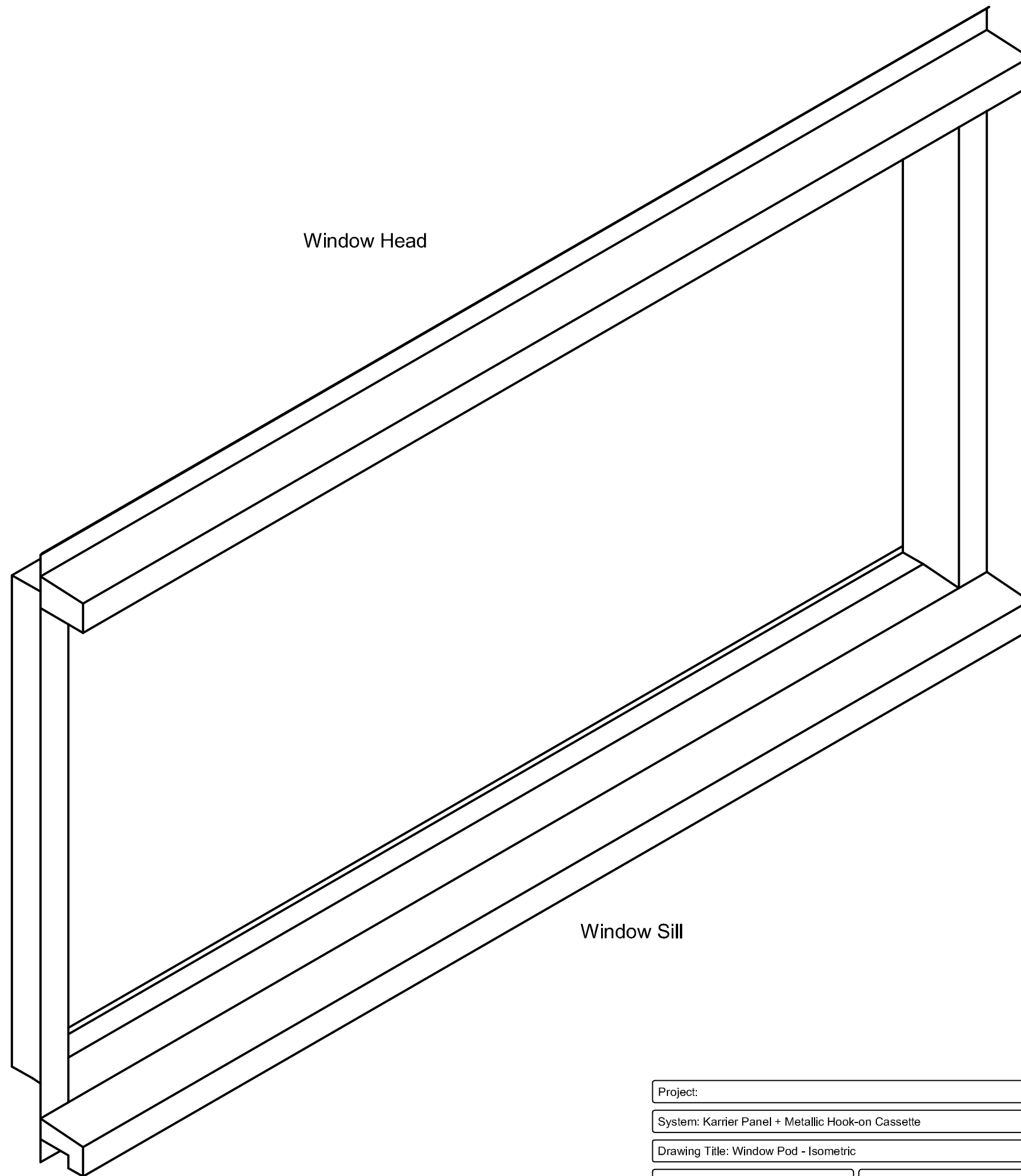
This is a generic construction detail. Supporting (secondary) steelwork member section types and sizes are indicative only. Secondary steelwork is typically provided by the Structural Steelwork Contractor.

Project:		Greenfield Business Park No.2	
System: Karrier Panel + Metallic Hook-on Cassette		Greenfield, Holywell	
Drawing Title: Curtain Walling Jamb		Flintshire, CH8 7GJ	
Drawn By: BT		Tel: 01352 716 100	
Date: 19/07/2012		Fax: 01352 710 161	
Drawing N°. MHC BM KP Hz 012		Technical: 0800 970 9036	
Rev: 0		Email: technical@kingspanbenchmark.com	
		Website: www.kingspanbenchmark.com	



By Kingspan

© Kingspan 2013



Window Head

Window Jamb

Window Sill

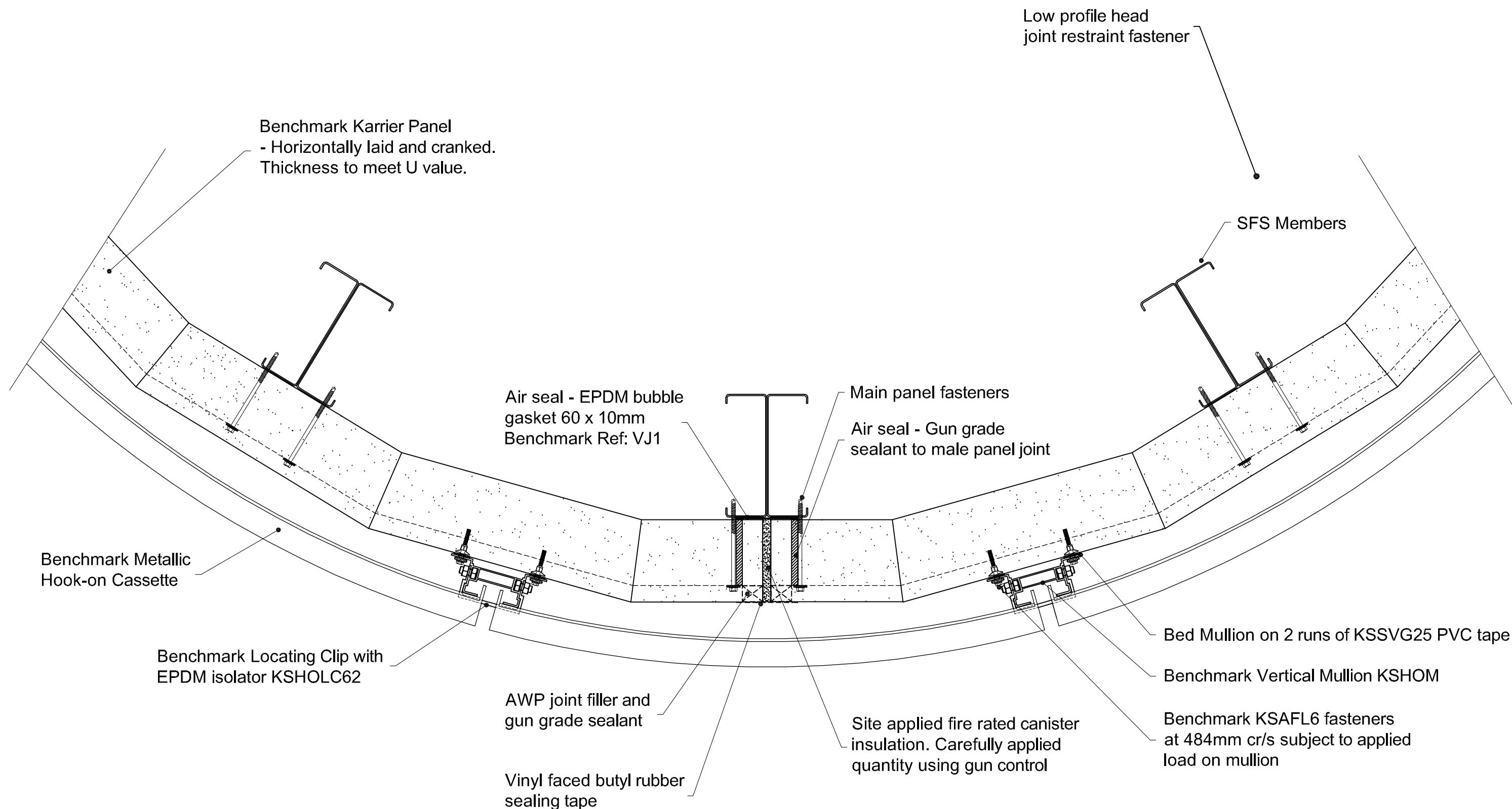
Generic only - component
dimensions tailored to suit specific
application

Project:	
System: Karrier Panel + Metallic Hook-on Cassette	Greenfield Business Park No.2 Greenfield, Holywell Flintshire. CH8 7GJ Tel: 01352 716 100 Fax: 01352 710 161 Technical: 0800 970 9036 Email: technical@kingspanbenchmark.com Website: www.kingspanbenchmark.com
Drawing Title: Window Pod - Isometric	
Drawn By: BT	Date: 19/07/2012
Drawing N°. MHC BM KP Hz 013	Rev: 0



By Kingspan

© Kingspan 2013



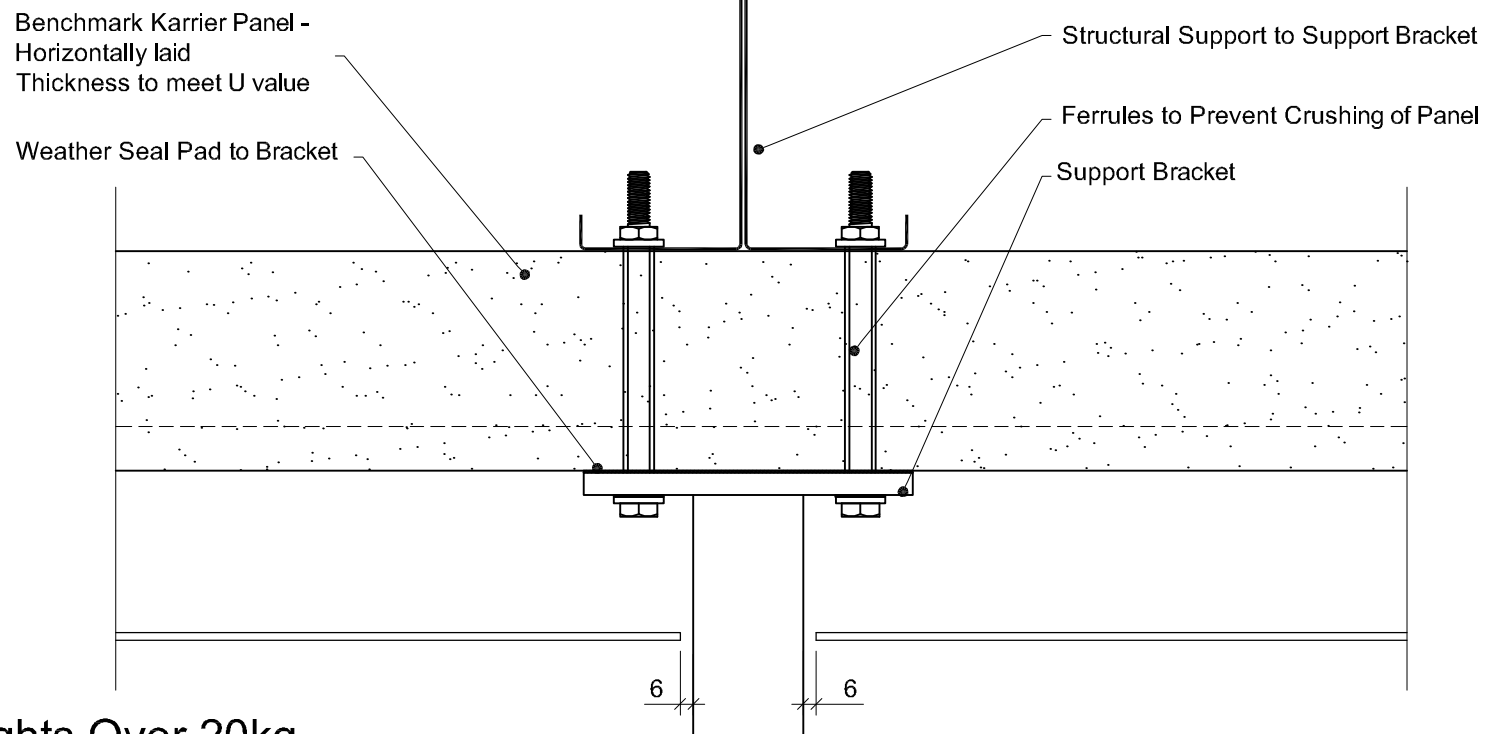
Note
Achievable radii of cassettes is dependant on material type and gauge

This is a generic construction detail. Supporting (secondary) steelwork member section types and sizes are indicative only. Secondary steelwork is typically provided by the Structural Steelwork Contractor.

Project:	Greenfield Business Park No.2
System: Karrier Panel + Metallic Hook-on Cassette	Greenfield, Holywell
Drawing Title: Curved Wall Detail	Flintshire, CH8 7GJ
Drawn By: BT	Tel: 01352 716 100
Date: 19/07/2012	Fax: 01352 710 181
Drawing N ^o : MHC BM KP Hz 014	Technical: 0800 970 9036
Rev: 0	Email: technical@kingspanbenchmark.com
	Website: www.kingspanbenchmark.com

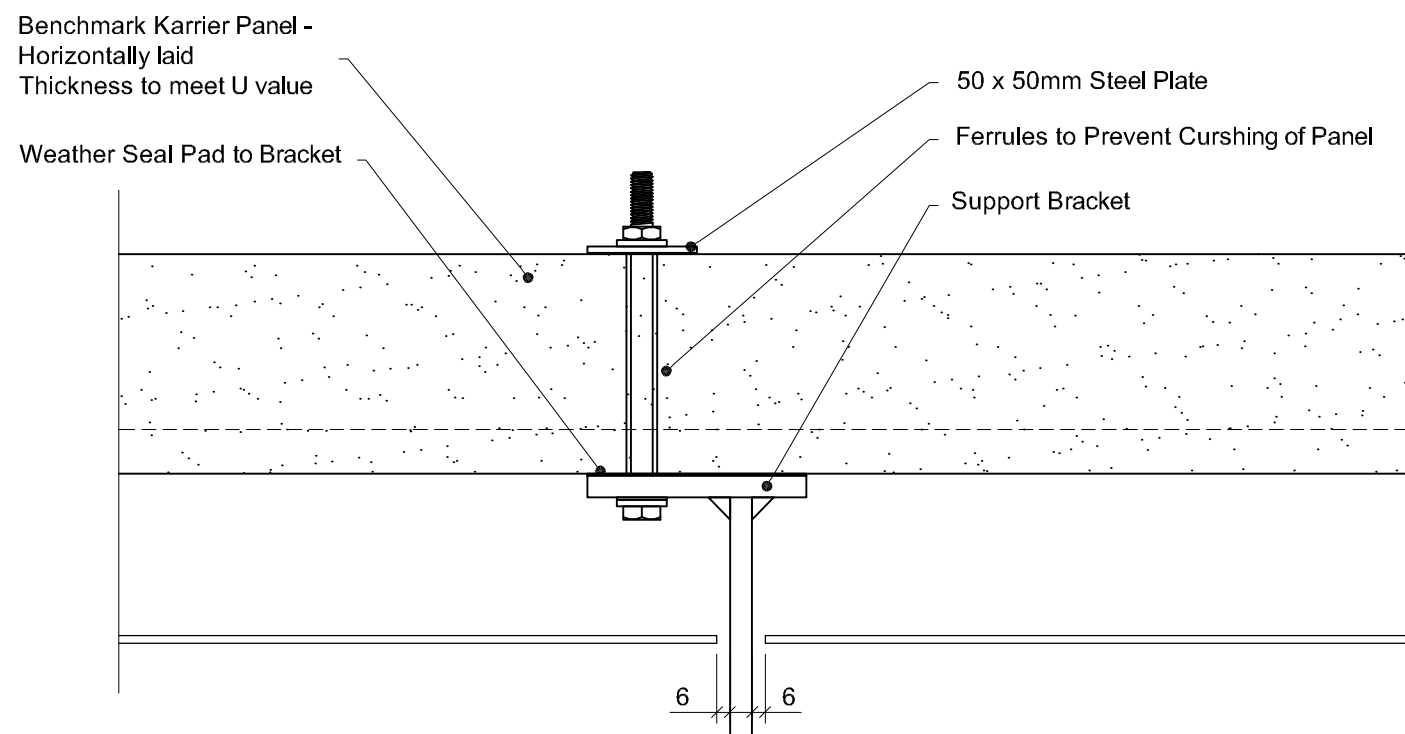


By Kingspan
© Kingspan 2013

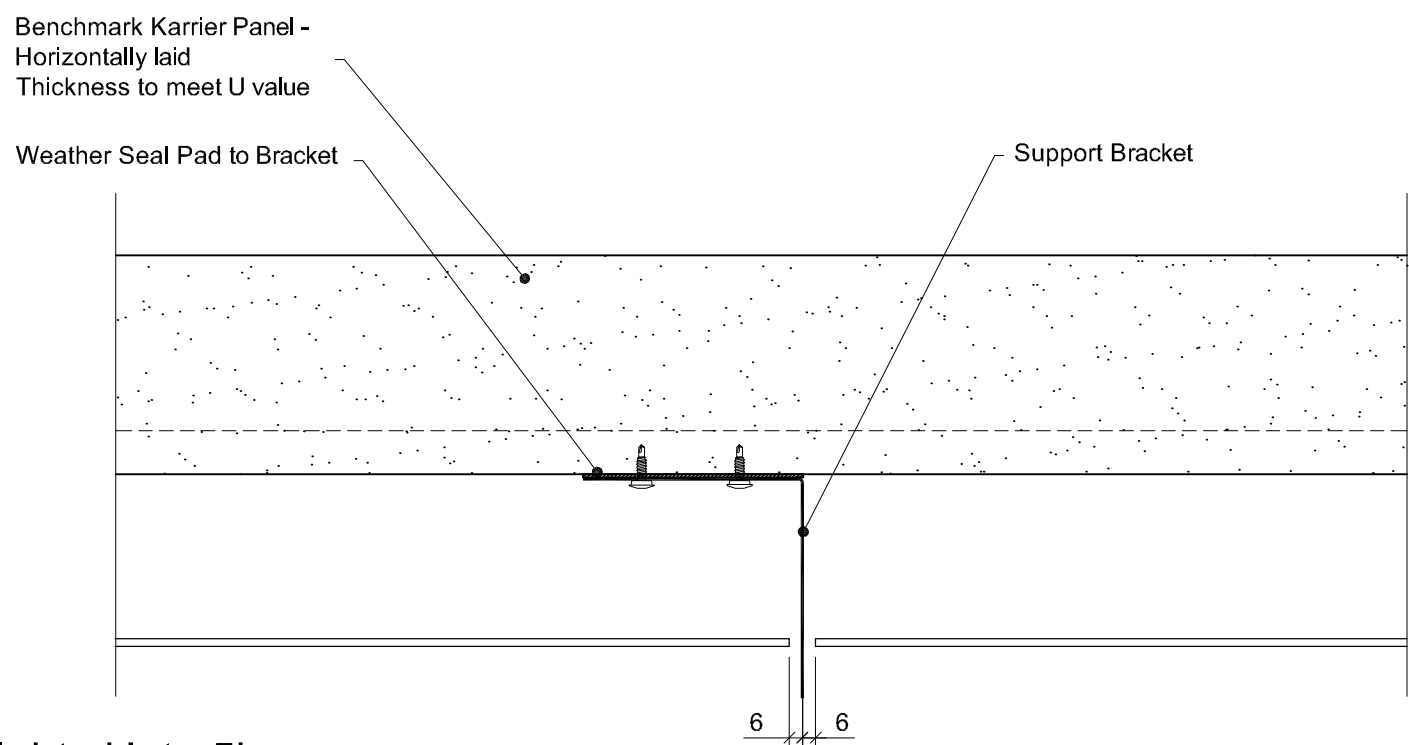


For Weights Over 20kg

This is a generic construction detail. Supporting (secondary) steelwork member section types and sizes are indicative only. Secondary steelwork is typically provided by the Structural Steelwork Contractor.




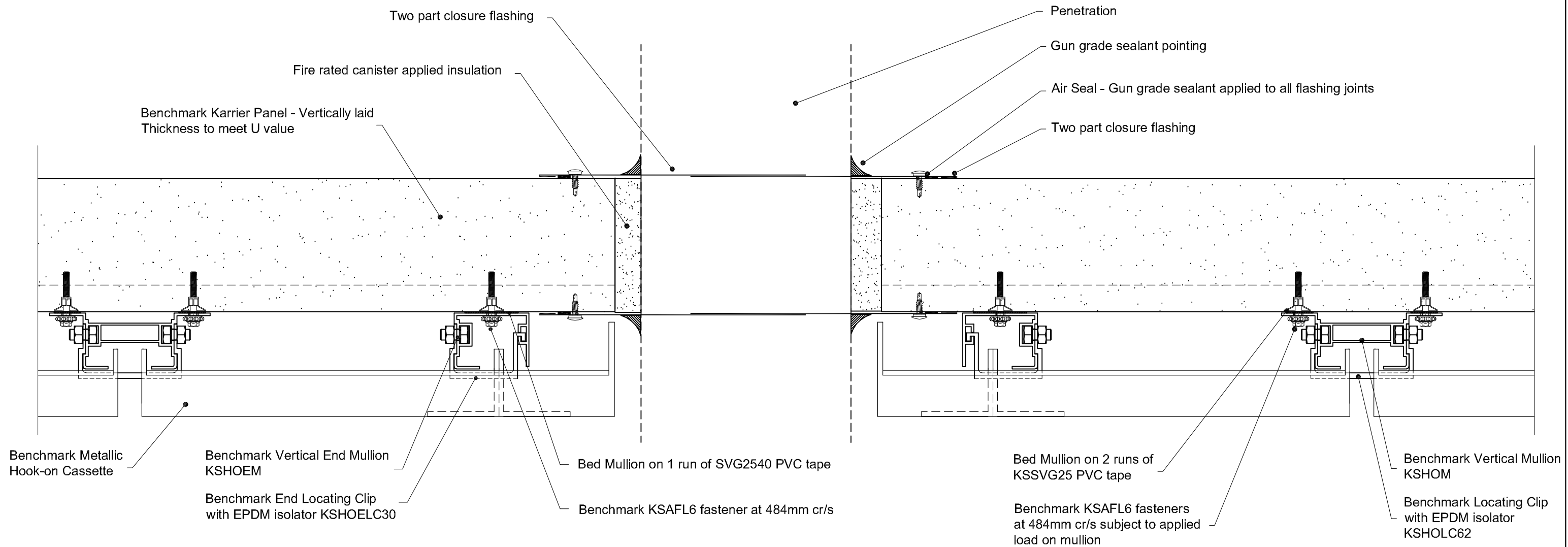
For Weights Up to 20kg



For Weights Up to 5kg

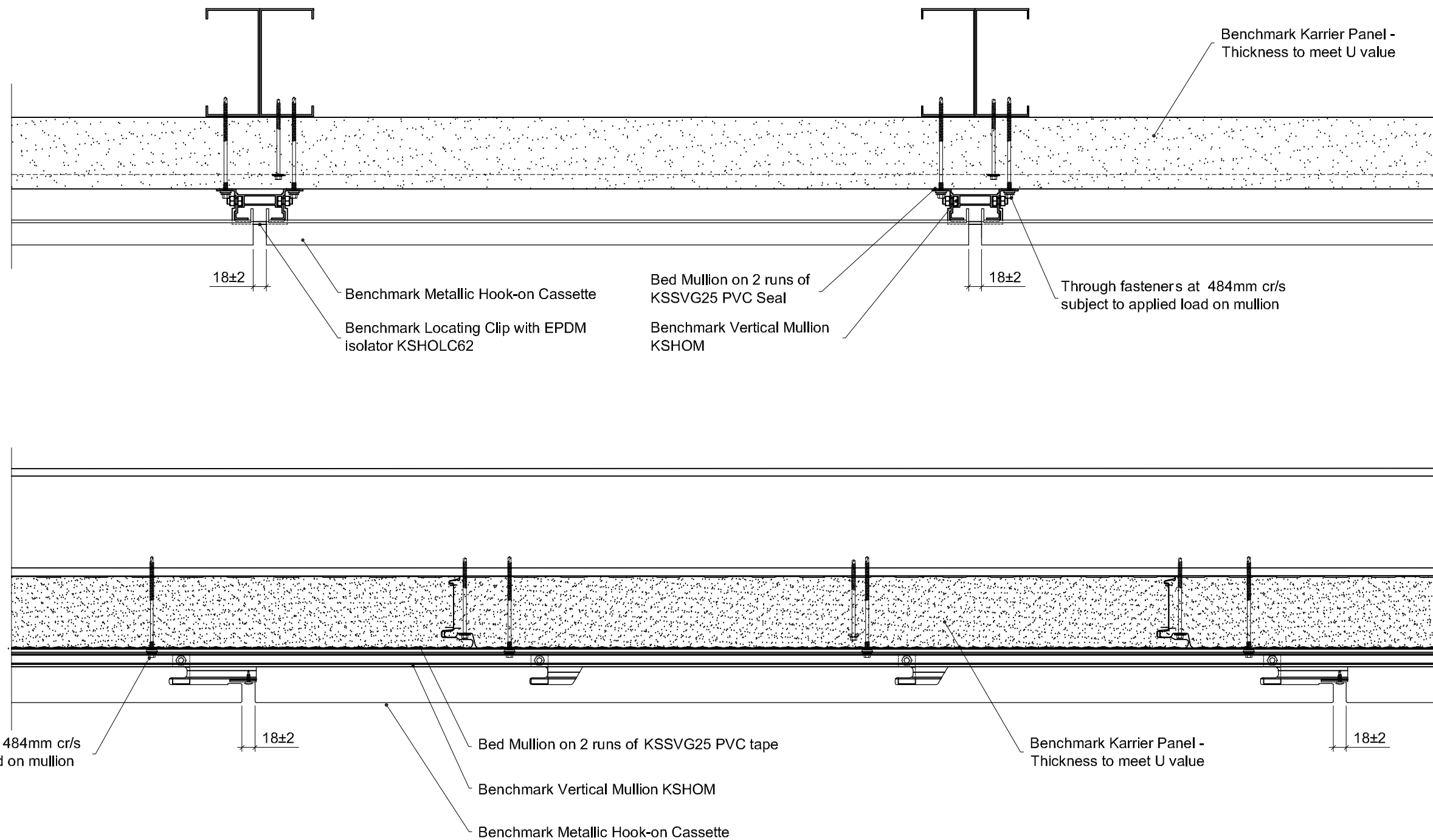
Plan Sections Through Elevation

Project:		Greenfield Business Park No.2 Greenfield, Holywell Flintshire. CH8 7GJ Tel: 01352 716 100 Fax: 01352 710 161 Technical: 0800 970 9036 Email: technical@kingspanbenchmark.com Website: www.kingspanbenchmark.com	
System: Karrier Panel + Metallic Hook-on Cassette		 By Kingspan © Kingspan 2013	
Drawing Title: Signage, Brise Soleil and Support Bracket Detail			
Drawn By: BT	Date: 19/07/2012		
Drawing N°. MHC BM KP Hz 015	Rev: 0		



Any penetration must be a minimum of 100mm from the joint in the Karrier Panel.
Maximum penetration size of 300mm without structural trimmers to support Karrier Panel.

Project:		Greenfield Business Park No.2 Greenfield, Holywell Flintshire. CH8 7GJ Tel: 01352 716 100 Fax: 01352 710 161 Technical: 0800 970 9036 Email: technical@kingspanbenchmark.com Website: www.kingspanbenchmark.com	
System: Karrier Panel + Metallic Hook-on Cassette		 © Kingspan 2013	
Drawing Title: Penetration Detail			
Drawn By: BT	Date: 19/07/2012		
Drawing N°. MHC BM KP Hz 016	Rev: 0		



This is a generic construction detail. Supporting (secondary) steelwork member section types and sizes are indicative only. Secondary steelwork is typically provided by the Structural Steelwork Contractor.

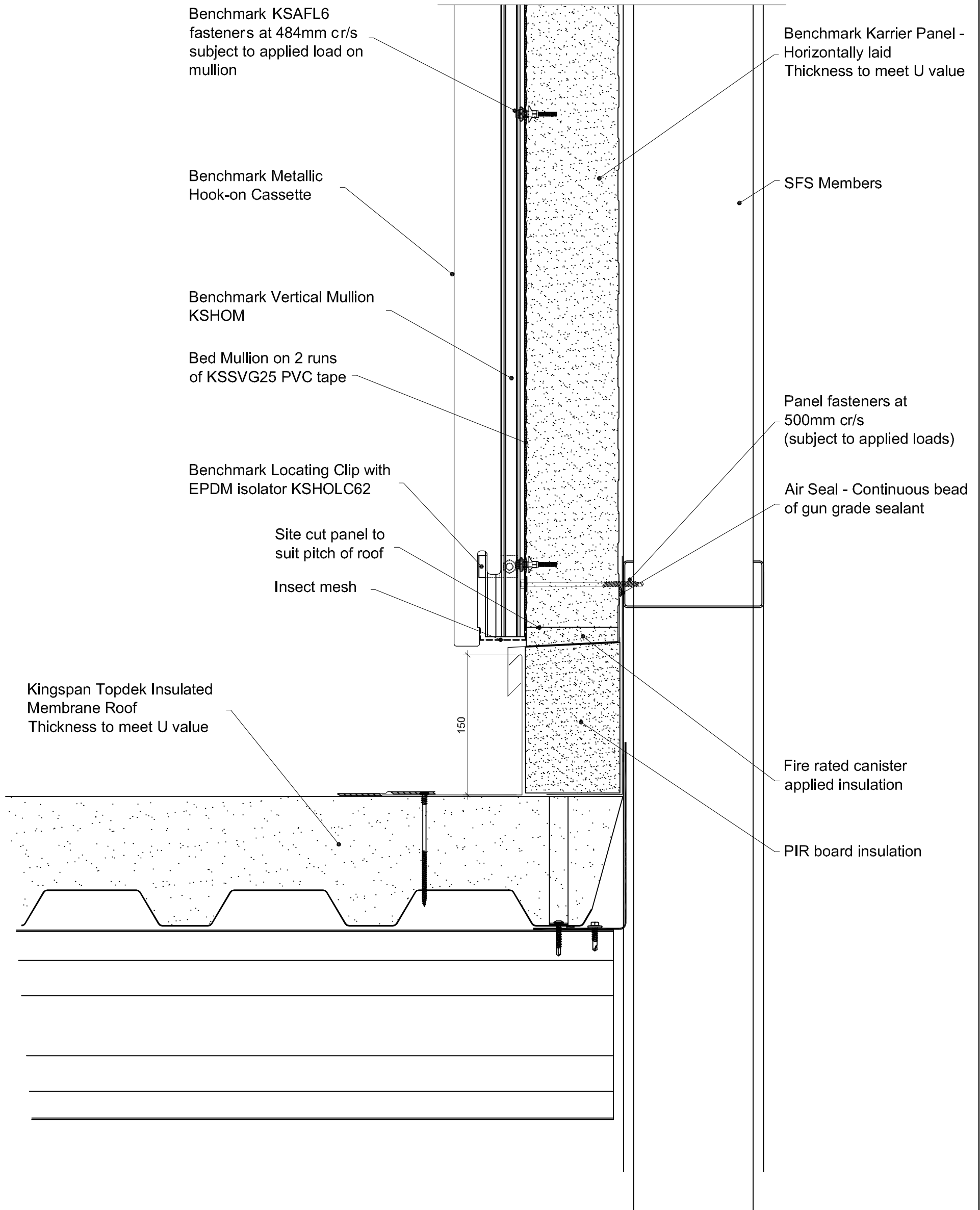
Project:	
System: Karrier Panel + Metallic Hook-on Cassette	
Drawing Title: Soffit Details	
Drawn By: BT	Date: 19/07/2012
Drawing N°. MHC BM KP Hz 017	Rev: 0

Greenfield Business Park No.2
Greenfield, Holywell
Flintshire. CH8 7GJ
Tel: 01352 716 100
Fax: 01352 710 161
Technical: 0800 970 9036
Email: technical@kingspanbenchmark.com
Website: www.kingspanbenchmark.com

BENCHMARK
By Kingspan
© Kingspan 2013

This is a generic construction detail. Supporting (secondary) steelwork member section types and sizes are indicative only. Secondary steelwork is typically provided by the Structural Steelwork Contractor.

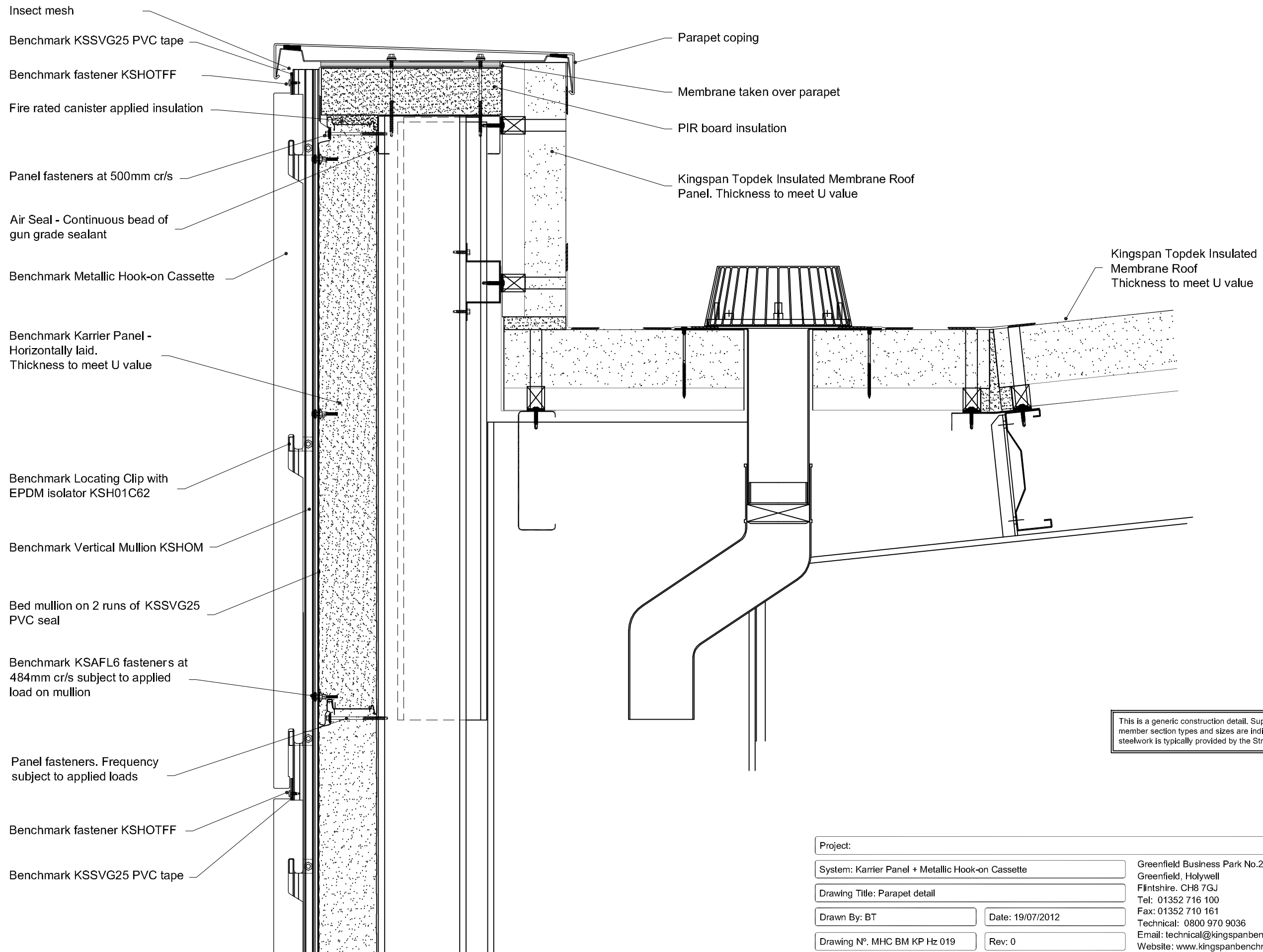
0 100mm




Project:	
System: Karrier Panel + Metallic Hook-on Cassette	
Drawing Title: Spandrel	
Drawn By: BT	Date: 19/07/2012
Drawing N°. MHC BM KP Hz 018	Rev: 0

Greenfield Business Park No.2
Greenfield, Holywell
Flintshire, CH8 7GJ
Tel: 01352 716 100
Fax: 01352 710 161
Technical: 0800 970 9036
Email: technical@kingspanbenchmark.com
Website: www.kingspanbenchmark.com

BENCHMARK
By Kingspan
© Kingspan 2013



This is a generic construction detail. Supporting (secondary) steelwork member section types and sizes are indicative only. Secondary steelwork is typically provided by the Structural Steelwork Contractor.

Project:		Greenfield Business Park No.2 Greenfield, Holywell Flintshire. CH8 7GJ Tel: 01352 716 100 Fax: 01352 710 161 Technical: 0800 970 9036 Email: technical@kingspanbenchmark.com Website: www.kingspanbenchmark.com	
System: Karrier Panel + Metallic Hook-on Cassette		 By Kingspan © Kingspan 2013	
Drawing Title: Parapet detail			
Drawn By: BT	Date: 19/07/2012		
Drawing N°. MHC BM KP Hz 019	Rev: 0		

Benchmark Karrier Panel -
Horizontally laid.
Thickness to meet U value

Benchmark Metallic
Hook-on Cassette

Bed Mullion on 2 runs
of KSSVG25 PVC tape

Benchmark Vertical
Mullion KSHOM

Benchmark KSAFL6
fasteners at 484mm cr/s
subject to applied load
on mullion

Benchmark Locating
Clip with EPDM isolator
KSHOLC62

Benchmark KSSVG25
PVC tape

Benchmark fastener
KSHOTFF

Movement

EPDM Membrane

Benchmark Locating
Clip with EPDM isolator
KSHOLC62

Benchmark Metallic
Hook-on Cassette

Benchmark Vertical
Mullion KSHOM

Bed Mullion on 2 runs
of KSSVG25 PVC tape

Benchmark Karrier Panel -
Horizontally laid.
Thickness to meet U value

SFS Members

Air seal - EPDM membrane
sealed to inside of Karrier Panel

Benchmark Panel Bearers.
Locate at each end of panel
and at 1500mm maximum
centres

Fire rated canister applied
insulation

Mineral fibre insulation

Deflection head channel

Movement

Air seal - EPDM membrane
sealed to inside of Karrier Panel

Panel fasteners. Frequency
subject to applied loads

Structural Framing System

This is a generic construction detail. Supporting steelwork member section types and sizes are indicative only. Steelwork is typically provided by the Structural Steelwork Contractor.

Project:

System: Karrier Panel + Metallic Hook-on Cassette

Drawing Title: Horizontal Movement Joint

Drawn By: BT

Date: 26/07/2012

Drawing N°. MHC BM KP Hz 021

Rev: 0

Greenfield Business Park No.2

Greenfield, Holywell

Flintshire, CH8 7GJ

Tel: 01352 716 100

Fax: 01352 710 161

Technical: 0800 970 9036

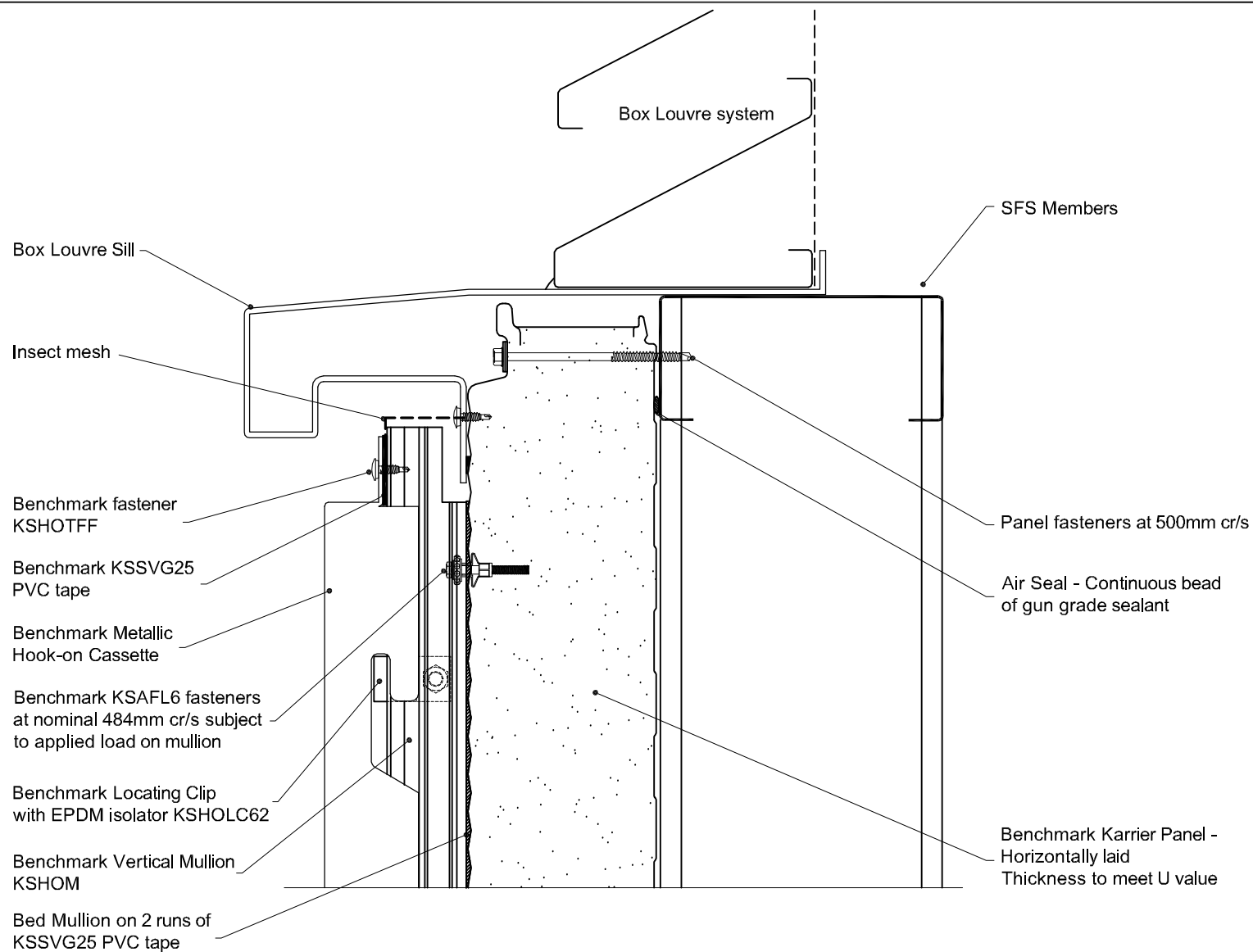
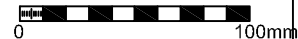
Email: technical@kingspanbenchmark.com

Website: www.kingspanbenchmark.com


BENCHMARK

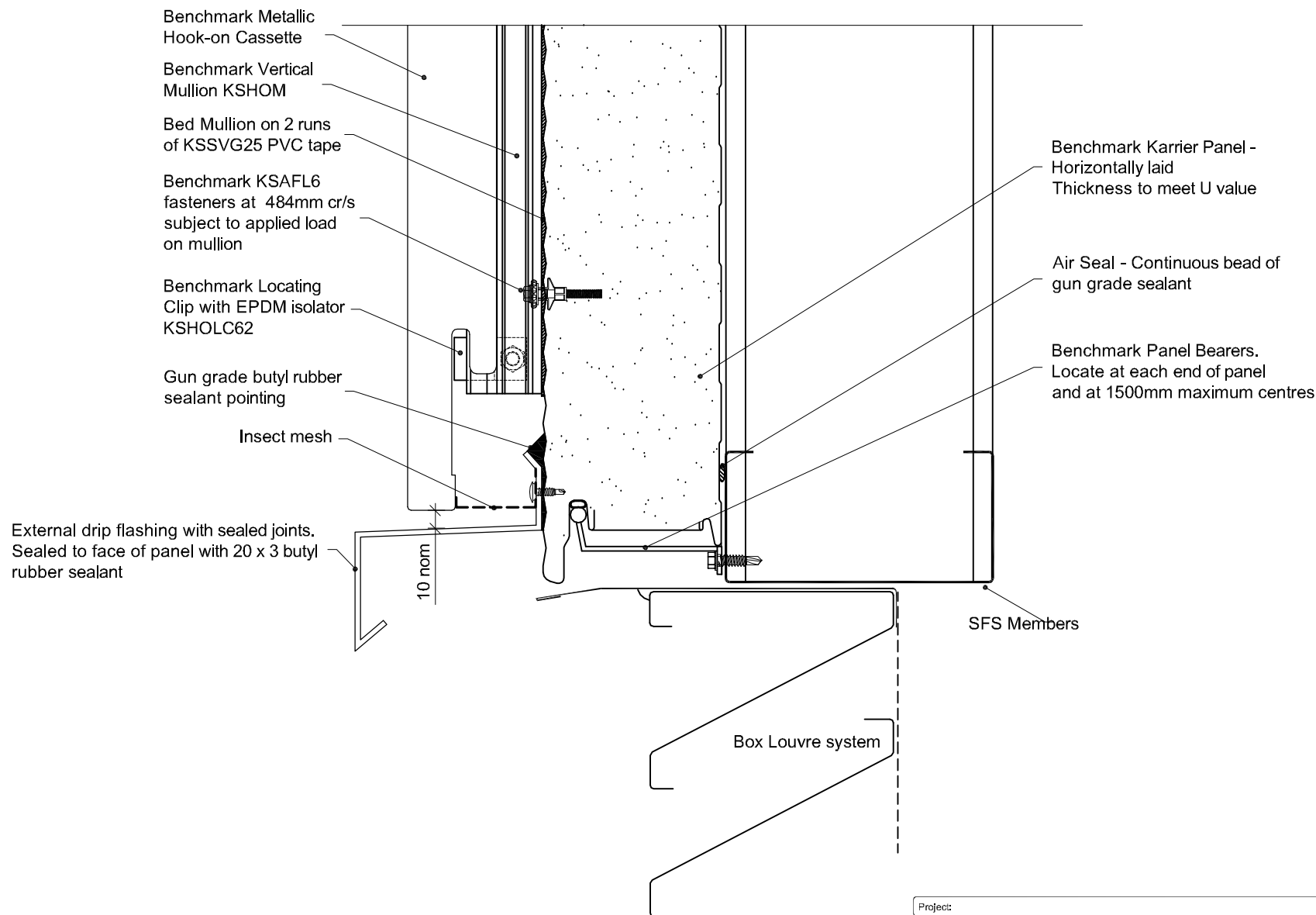
By Kingspan

© Kingspan 2013



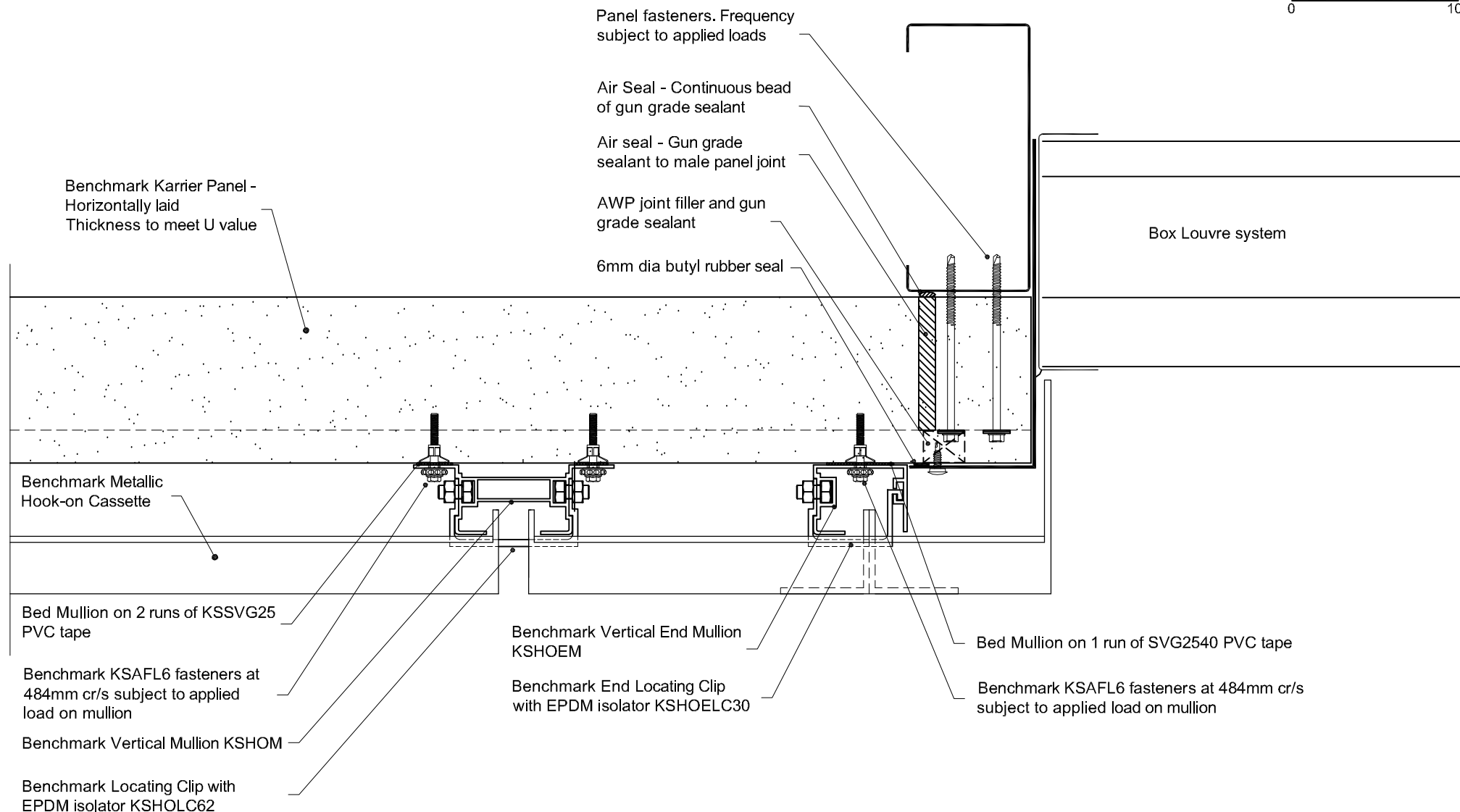
This is a generic construction detail. Supporting (secondary) steelwork member section types and sizes are Indicative only. Secondary steelwork is typically provided by the Structural Steelwork Contractor.

Project:		Greenfield Business Park No.2 Greenfield, Holywell Flintshire, CH8 7GJ Tel: 01352 716 100 Fax: 01352 710 161 Technical: 0800 970 9036 Email: technical@kingspanbenchmark.com Website: www.kingspanbenchmark.com	
System: Karrier Panel + Metallic Hook-on Cassette		 By Kingspan © Kingspan 2013	
Drawing Title: Louvre Sill			
Drawn By: BT	Date: 19/07/2012		
Drawing N°. MHC BM KP Hz 022	Rev: 0		



This is a generic construction detail. Supporting (secondary) steelwork member section types and sizes are indicative only. Secondary steelwork is typically provided by the Structural Steelwork Contractor.

Project:		Greenfield Business Park No.2	
System: Karrier Panel + Metallic Hook-on Cassette		Greenfield, Holywell	
Drawing Title: Louvre Head		Flintshire, CH18 7GJ	
Drawn By: BT		Tel: 01352 716 100	
Date: 19/07/2012		Fax: 01352 710 161	
Drawing N°: MHC BM KP Hz 023		Technical: 0800 970 9036	
Rev: 0		Email: technical@kingspanbenchmark.com	
		Website: www.kingspanbenchmark.com	

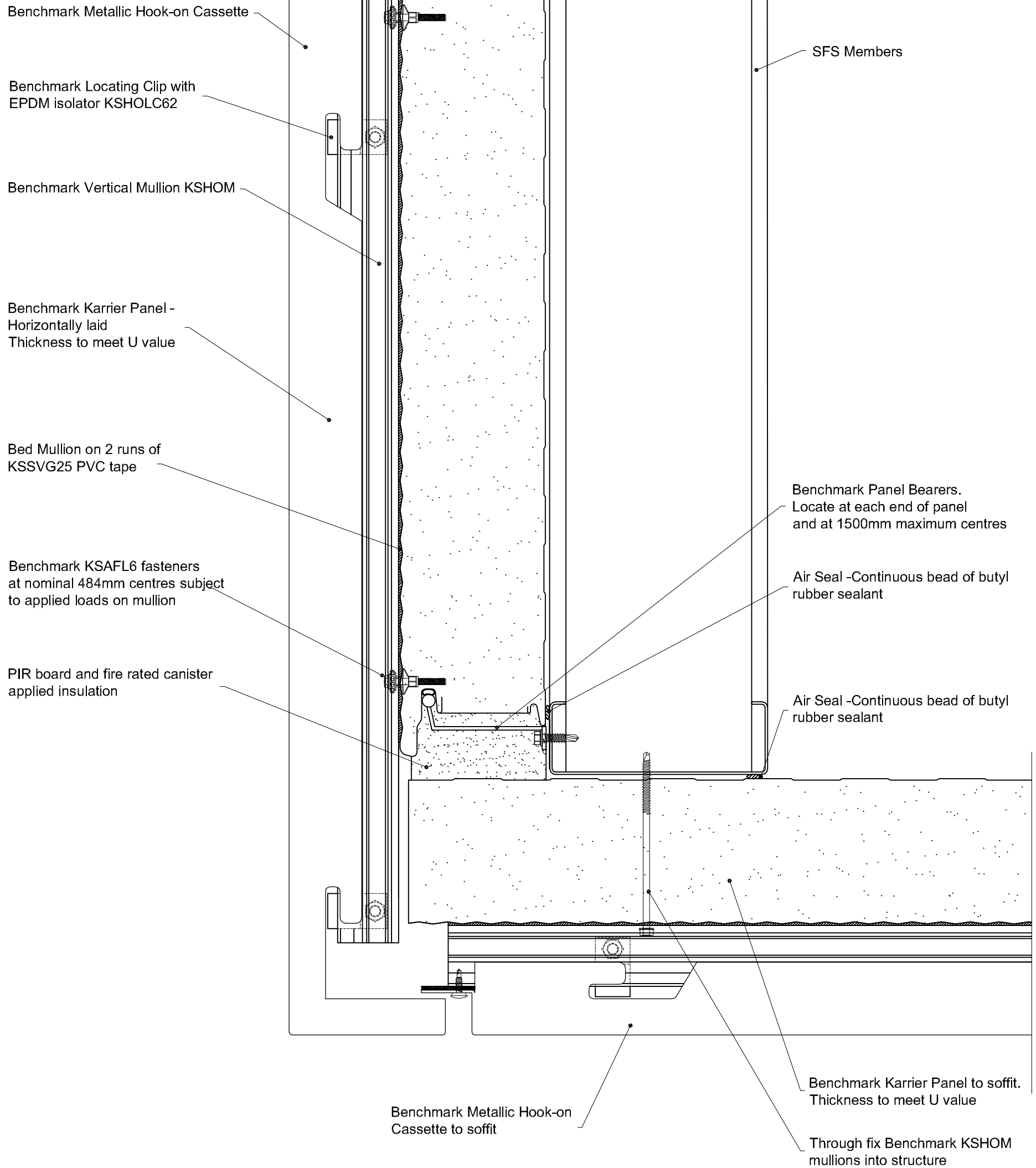


This is a generic construction detail. Supporting (secondary) steelwork member section types and sizes are indicative only. Secondary steelwork is typically provided by the Structural Steelwork Contractor.

Project:		Greenfield Business Park No.2	
System: Karrier Panel + Metallic Hook-on Cassette		Greenfield, Holywell	
Drawing Title: Louvre Jamb		Flintshire, CH8 7GJ	
Drawn By: BT		Tel: 01352 716 100	
Date: 19/07/2012		Fax: 01352 710 161	
Drawing N°: MHC BM KP Hz 024		Technical: 0800 970 9036	
Rev: 0		Email: technical@kingspanbenchmark.com	
		Website: www.kingspanbenchmark.com	

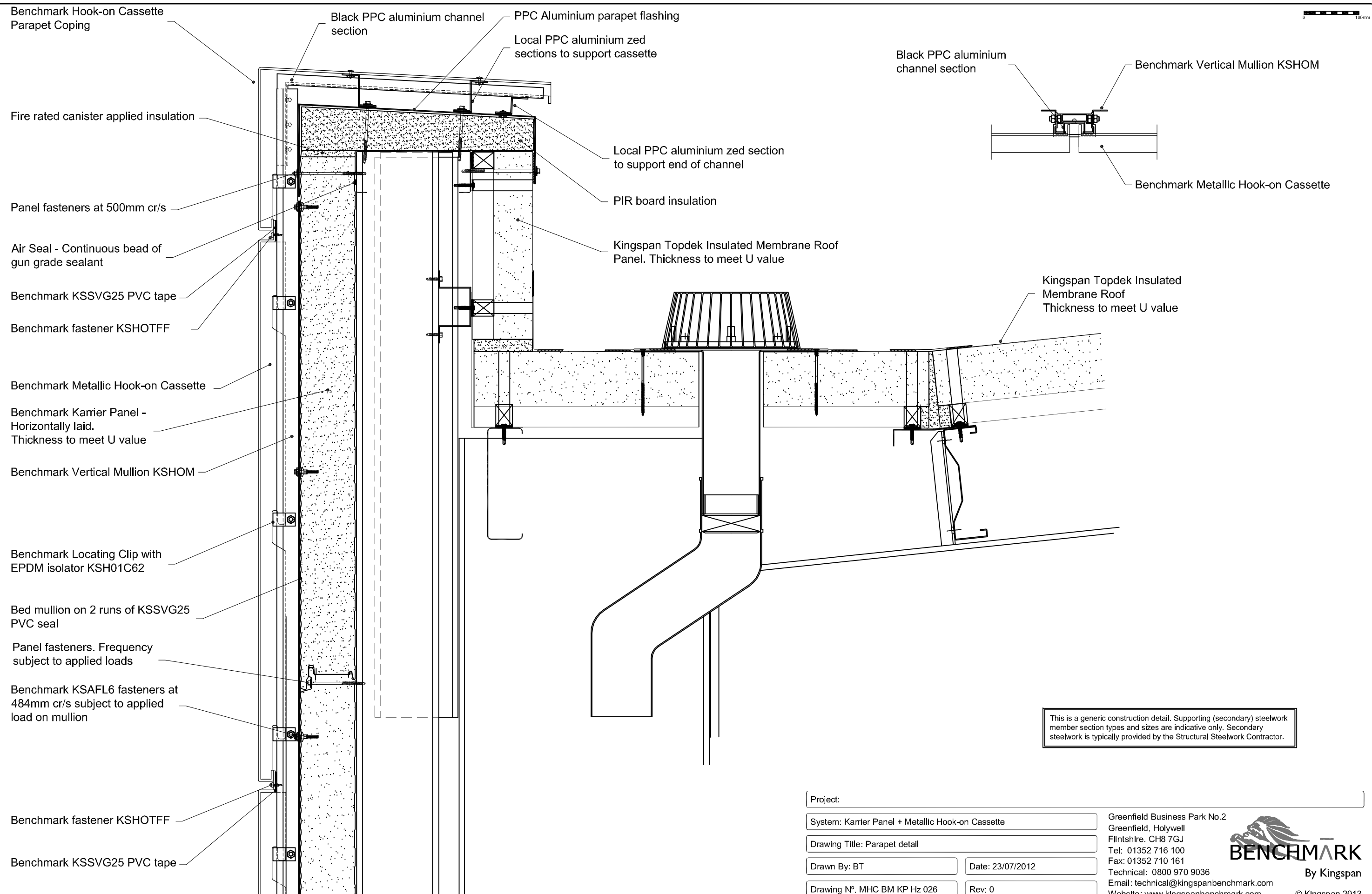


By Kingspan
© Kingspan 2013

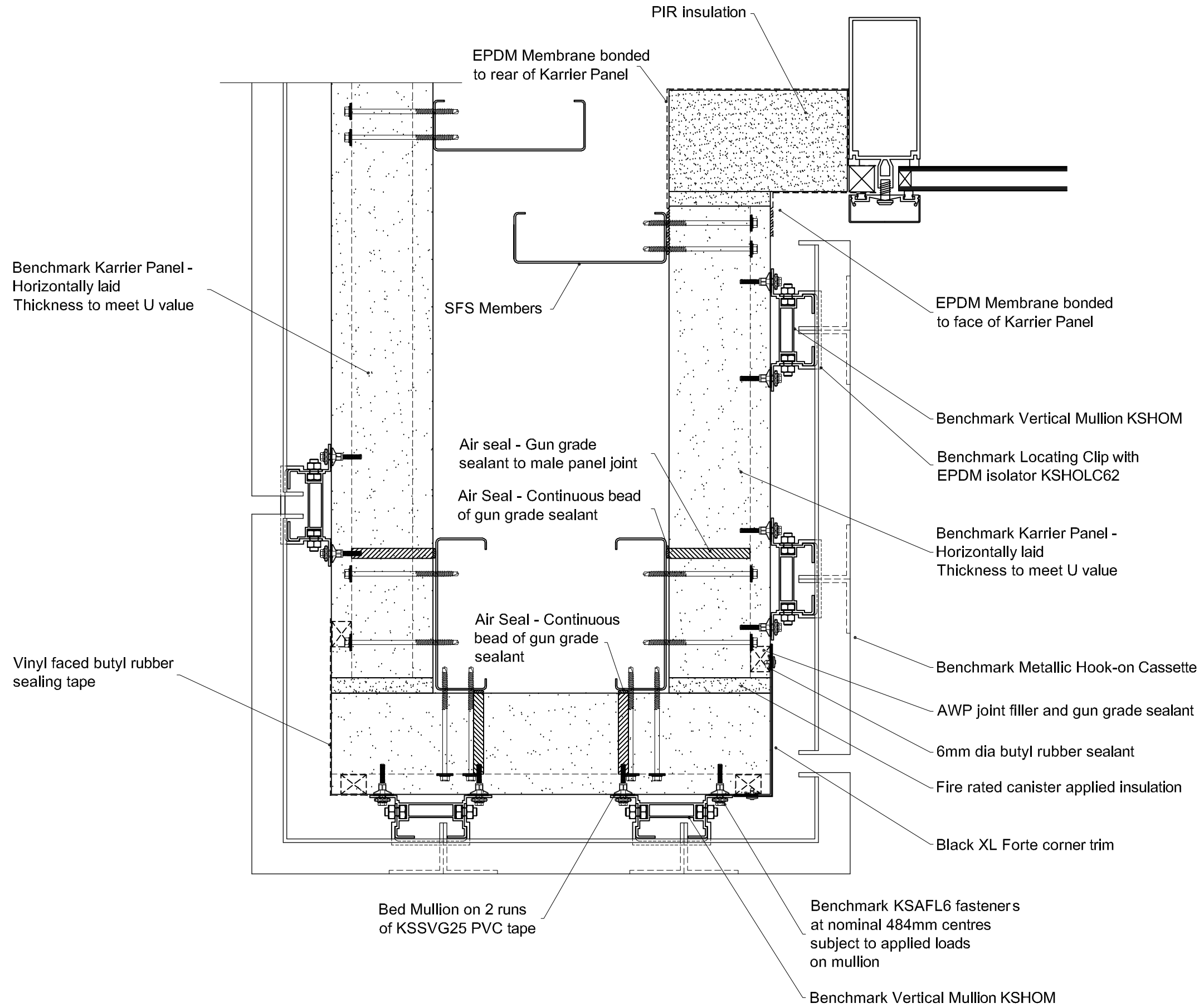


This is a generic construction detail. Supporting (secondary) steelwork member section types and sizes are indicative only. Secondary steelwork is typically provided by the Structural Steelwork Contractor.

Project:	Greenfield Business Park No.2 Greenfield, Holywell Flintshire. CH8 7GJ Tel: 01352 716 100 Fax: 01352 710 161 Technical: 0800 970 9036 Email: technical@kingspanbenchmark.com Website: www.kingspanbenchmark.com
System: Karrier Panel + Metallic Hook-on Cassette	
Drawing Title: Drip Detail + Soffit	
Drawn By: BT	Date: 28/03/2012
Drawing N°. MHC BM KP Hz 025	Rev: 0



Project:		Greenfield Business Park No.2 Greenfield, Holywell Flintshire. CH8 7GJ Tel: 01352 716 100 Fax: 01352 710 161 Technical: 0800 970 9036 Email: technical@kingspanbenchmark.com Website: www.kingspanbenchmark.com	
System: Karrier Panel + Metallic Hook-on Cassette		 By Kingspan © Kingspan 2013	
Drawing Title: Parapet detail			
Drawn By: BT	Date: 23/07/2012		
Drawing N°. MHC BM KP Hz 026	Rev: 0		



This is a generic construction detail. Supporting (secondary) steelwork member section types and sizes are indicative only. Secondary steelwork is typically provided by the Structural Steelwork Contractor.

Project:			
System: Karrier Panel + Metallic Hook-on Cassette		Greenfield Business Park No.2 Greenfield, Holywell Flintshire. CH8 7GJ Tel: 01352 716 100 Fax: 01352 710 161 Technical: 0800 970 9036 Email: technical@kingspanbenchmark.com Website: www.kingspanbenchmark.com	
Drawing Title: Corner Return			
Drawn By: BT	Date: 26/07/2012		
Drawing N°. MHC BM KP Hz 027	Rev: 0		

Benchmark Locating Clip with EPDM isolator KSHOLC62

Benchmark Vertical Mullion KSHOM

Bed Mullion on 2 runs of KSSVG25 PVC tape

Benchmark Metallic Hook-on Cassette

Benchmark Karrier Panel - Horizontally laid Thickness to meet U value

Benchmark KSAFL6 fasteners at nominal 484mm centres subject to applied loads on mullion

Gun grade butyl rubber sealant pointing

Mullion notched on site to accommodate drip flashing

Insect mesh

10 (nom)

External drip flashing with sealed joints. Sealed to face of panel with 20 x 3 butyl rubber sealant

Ground Floor Slab

SFS Members

Air Seal - EPDM membrane sealed to inside of Karrier Panel

Benchmark Panel Bearers. Locate at each end of panel and at 1500mm maximum centres

PIR board and fire rated canister applied insulation

EPDM membrane sealed to slab

This is a generic construction detail. Supporting (secondary) steelwork member section types and sizes are indicative only. Secondary steelwork is typically provided by the Structural Steelwork Contractor.

Project:

System: Karrier Panel + Metallic Hook-on Cassette

Drawing Title: Drip Detail (Face Fixed Flashing)

Drawn By: BT

Date: 15/08/2012

Drawing N°. MHC BM KP Hz 028

Rev: 0

Greenfield Business Park No.2

Greenfield, Holywell

Flintshire, CH8 7GJ

Tel: 01352 716 100

Fax: 01352 710 161

Technical: 0800 970 9036

Email: technical@kingspanbenchmark.com

Website: www.kingspanbenchmark.com



By Kingspan

© Kingspan 2013

Benchmark Locating Clip with EPDM isolator KSHOLC62

Benchmark Vertical Mullion KSHOM

Bed Mullion on 2 runs of KSSVG25 PVC tape

Benchmark Metallic Hook-on Cassette

Benchmark Karrier Panel - Horizontally laid
Thickness to meet U value

Benchmark KSAFL6 fasteners at nominal 484mm centres subject to applied loads on mullion

Gun grade butyl rubber sealant pointing

Mullion notched on site to accommodate drip flashing

Insect mesh

10 (nom)

External drip flashing with sealed joints. Sealed to face of panel with 20 x 3 butyl rubber sealant

Brickwork

SFS Members

Air Seal - EPDM membrane sealed to inside of Karrier Panel

Benchmark Panel Bearers. Locate at each end of panel and at 1500mm maximum centres

PIR board and fire rated canister applied insulation

EPDM membrane (part of air permeability control layer)

This is a generic construction detail. Supporting (secondary) steelwork member section types and sizes are indicative only. Secondary steelwork is typically provided by the Structural Steelwork Contractor.

Project:

System: Karrier Panel + Metallic Hook-on Cassette

Drawing Title: Drip Detail (Face Fixed Flashing)

Drawn By: BT

Date: 15/08/2012

Drawing N°. MHC BM KP Hz 029

Rev: 0

Greenfield Business Park No.2

Greenfield, Holywell

Flintshire, CH8 7GJ

Tel: 01352 716 100

Fax: 01352 710 161

Technical: 0800 970 9036

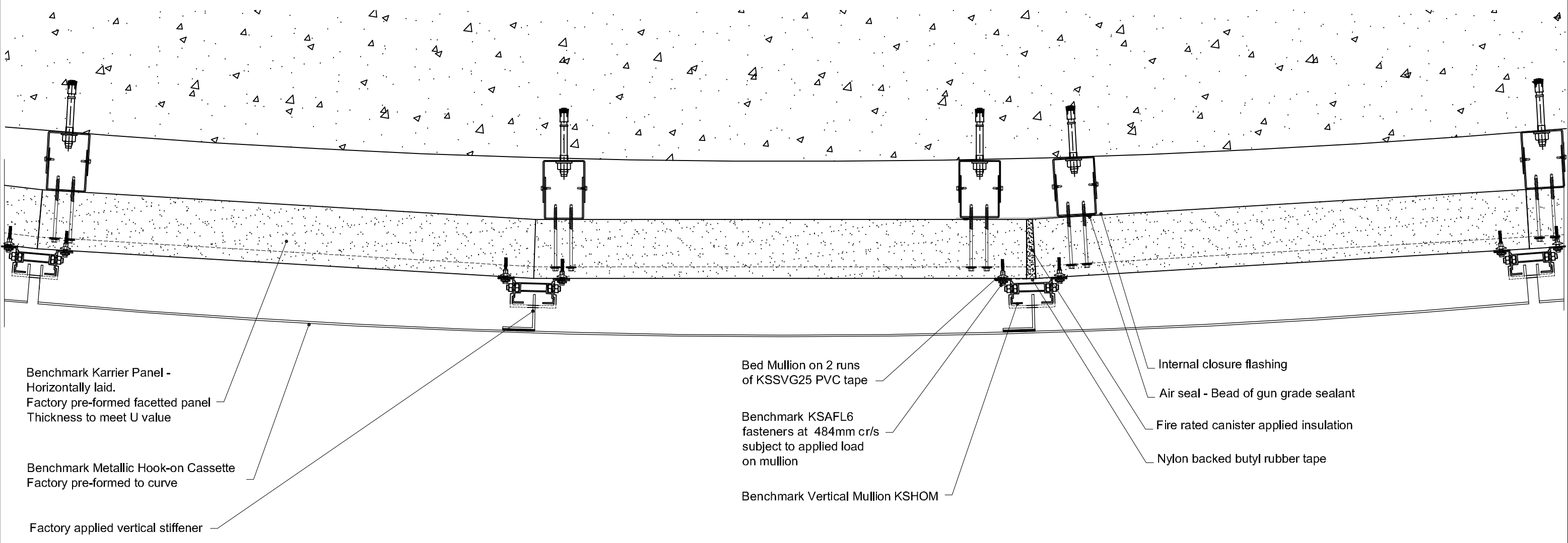
Email: technical@kingspanbenchmark.com

Website: www.kingspanbenchmark.com



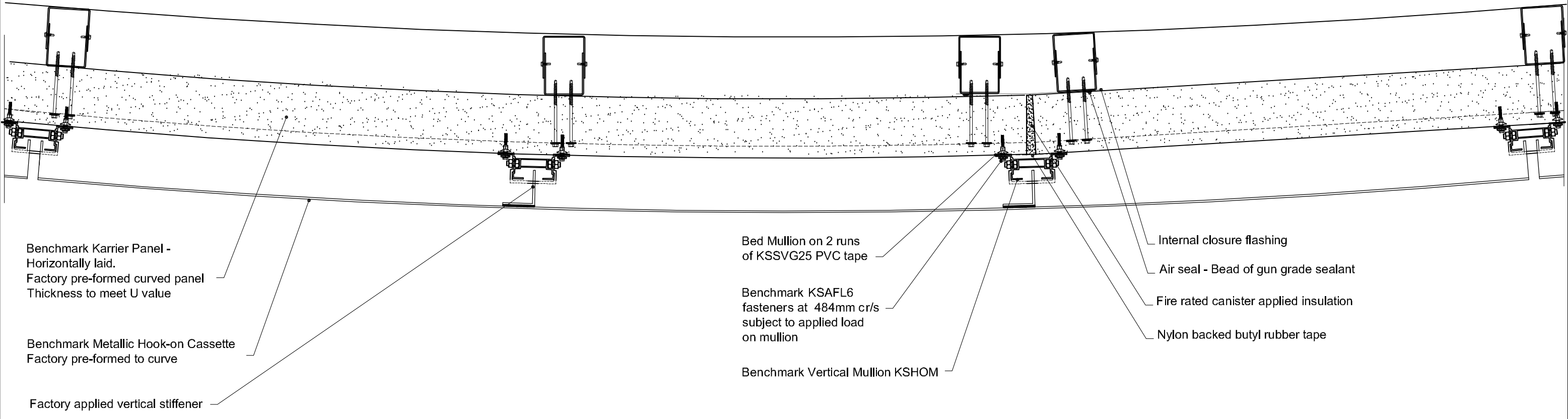
By Kingspan

© Kingspan 2013



This is a generic construction detail. Supporting (secondary) steelwork member section types and sizes are indicative only. Secondary steelwork is typically provided by the Structural Steelwork Contractor.

Project:		Greenfield Business Park No.2 Greenfield, Holywell Flintshire. CH8 7GJ Tel: 01352 716 100 Fax: 01352 710 161 Technical: 0800 970 9036 Email: technical@kingspanbenchmark.com Website: www.kingspanbenchmark.com	
System: Karrier Panel + Metallic Hook-on Cassette			
Drawing Title: Curved facade detail			
Drawn By: AE	Date: 29/07/2013		
Drawing N°: MHC BM KP Hz 030	Rev: 0		



Benchmark Karrier Panel -
Horizontally laid.
Factory pre-formed curved panel
Thickness to meet U value

Benchmark Metallic Hook-on Cassette
Factory pre-formed to curve

Factory applied vertical stiffener

Bed Mullion on 2 runs
of KSSVG25 PVC tape

Benchmark KSAFL6
fasteners at 484mm cr/s
subject to applied load
on mullion

Benchmark Vertical Mullion KSHOM

Internal closure flashing

Air seal - Bead of gun grade sealant


Fire rated canister applied insulation

Nylon backed butyl rubber tape

This is a generic construction detail. Supporting (secondary) steelwork member section types and sizes are indicative only. Secondary steelwork is typically provided by the Structural Steelwork Contractor.

Project:	
System: Karrier Panel + Metallic Hook-on Cassette	
Drawing Title: Curved facade detail	
Drawn By: AE	Date: 29/01/2014
Drawing N°. MHC BM KP Hz 031	Rev: 0

Greenfield Business Park No.2
Greenfield, Holywell
Flintshire. CH8 7GJ
Tel: 01352 716 100
Fax: 01352 710 161
Technical: 0800 970 9036
Email: technical@kingspanbenchmark.com
Website: www.kingspanbenchmark.com



By Kingspan

© Kingspan 2013