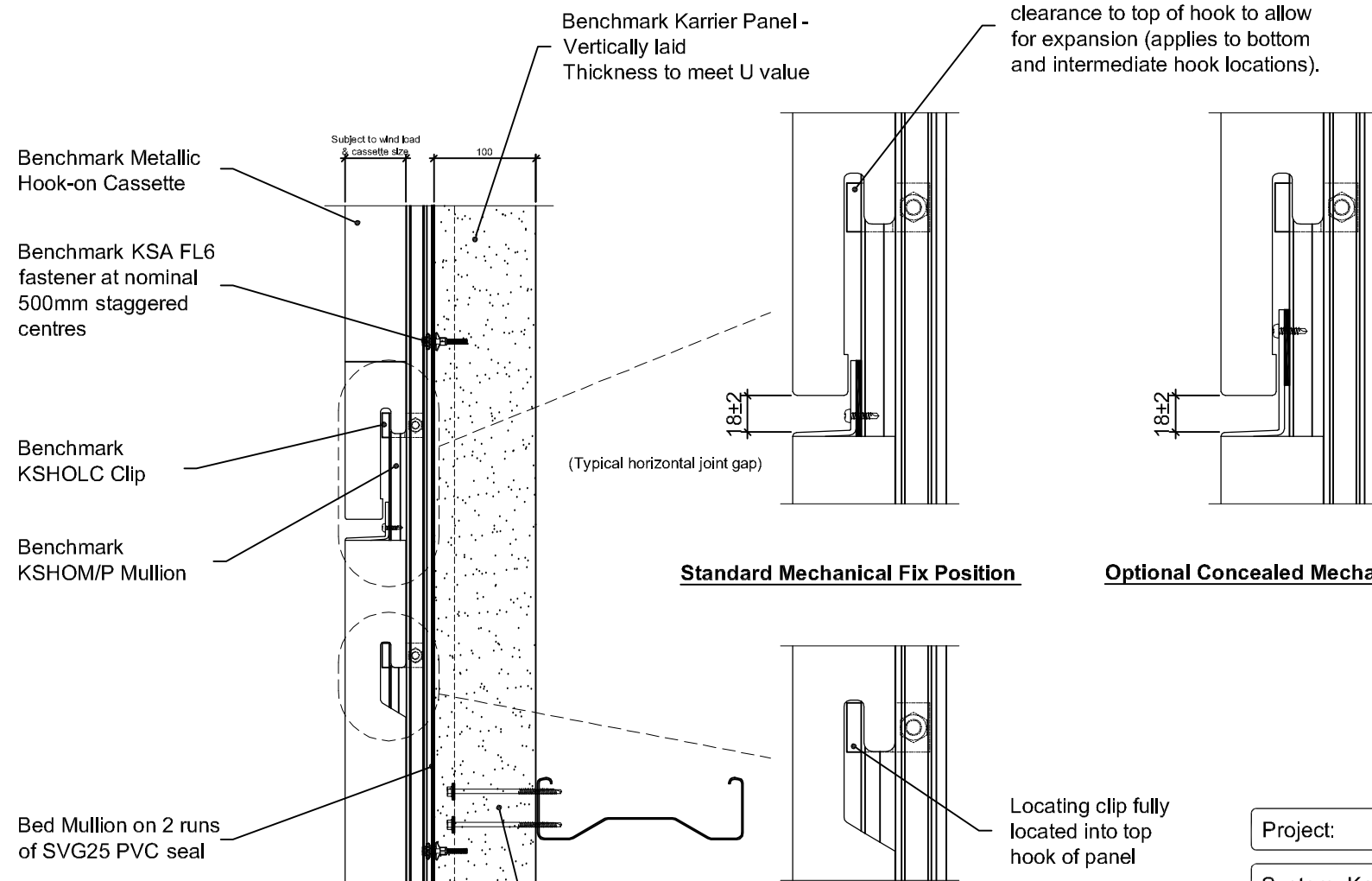
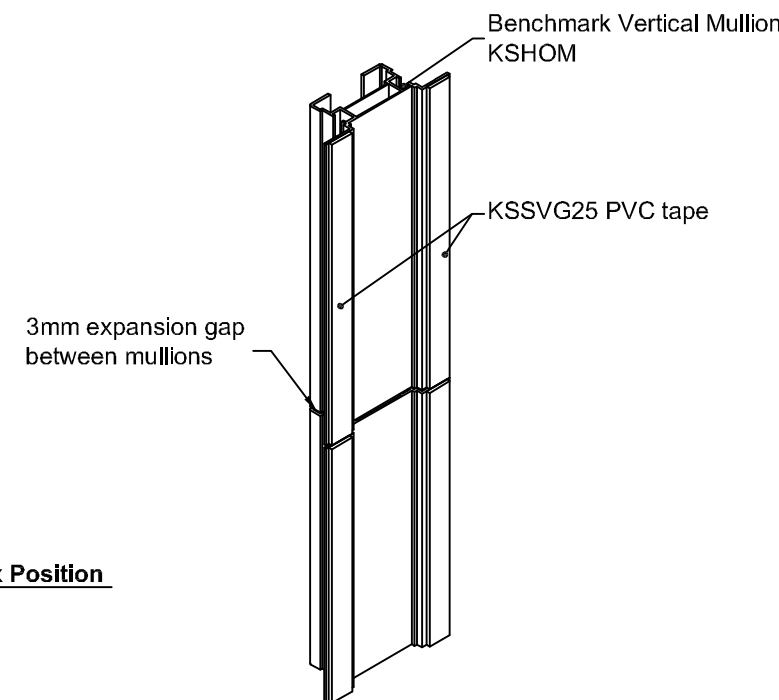


**Condition where mullion conflicts with vertical panel joint**



**Standard Mechanical Fix Position**

**Optional Concealed Mechanical Fix Position**



**KSSVG25 PVC tape to rear of Benchmark Vertical Mullion KSHOM**

**Material, Gauges and Finishes and Colours**  
Please refer to latest product guide and website.

**Panel Sizes and Tolerances**  
Depends on material choice - please refer to current data sheet.

**Structural Rails**  
Design for lateral loads and for gravity load of facade system. System weights are provided in current product data sheets.

**Benchmark KSA FL6 Fasteners**  
Must not be positioned less than 100mm from a site cut edge.

Fixing centres are indicative and may need to be decreased in areas of high negative wind loading

**Dissimilar Metals**  
Contact between dissimilar metals must be prevented with PVC isolation tape.

**Handling**  
The surface of certain metals are susceptible to finger marking. Suitable clean gloves should be worn when handling these materials.

**Open Edges**  
Open edges should be fitted with insect mesh

**Cavity Barriers**  
Cavity barriers are not supplied with the Benchmark Facade system and must be specified and sourced separately.

**Steelwork Tolerances**  
The permissible steelwork tolerance between the bearing planes of adjacent supports is  $\pm 5\text{mm}$

This is a generic construction detail. Supporting (secondary) steelwork member section types and sizes are indicative only. Secondary steelwork is typically provided by the Structural Steelwork Contractor.

Project:

System: Karrier Panel + Metallic Hook-on Cassette - Corten

Drawing Title: System Layout

Drawn By: BT

Date: 23/02/2012

Drawing N°: MHC (C) BM KP Vt 100

Rev: A

Greenfield Business Park No.2

Greenfield, Holywell

Flintshire. CH8 7GJ

Tel: 01352 716 100

Fax: 01352 710 161

Technical: 0800 970 9036

Email: [technical@kingspanbenchmark.com](mailto:technical@kingspanbenchmark.com)

Website: [www.kingspanbenchmark.com](http://www.kingspanbenchmark.com)

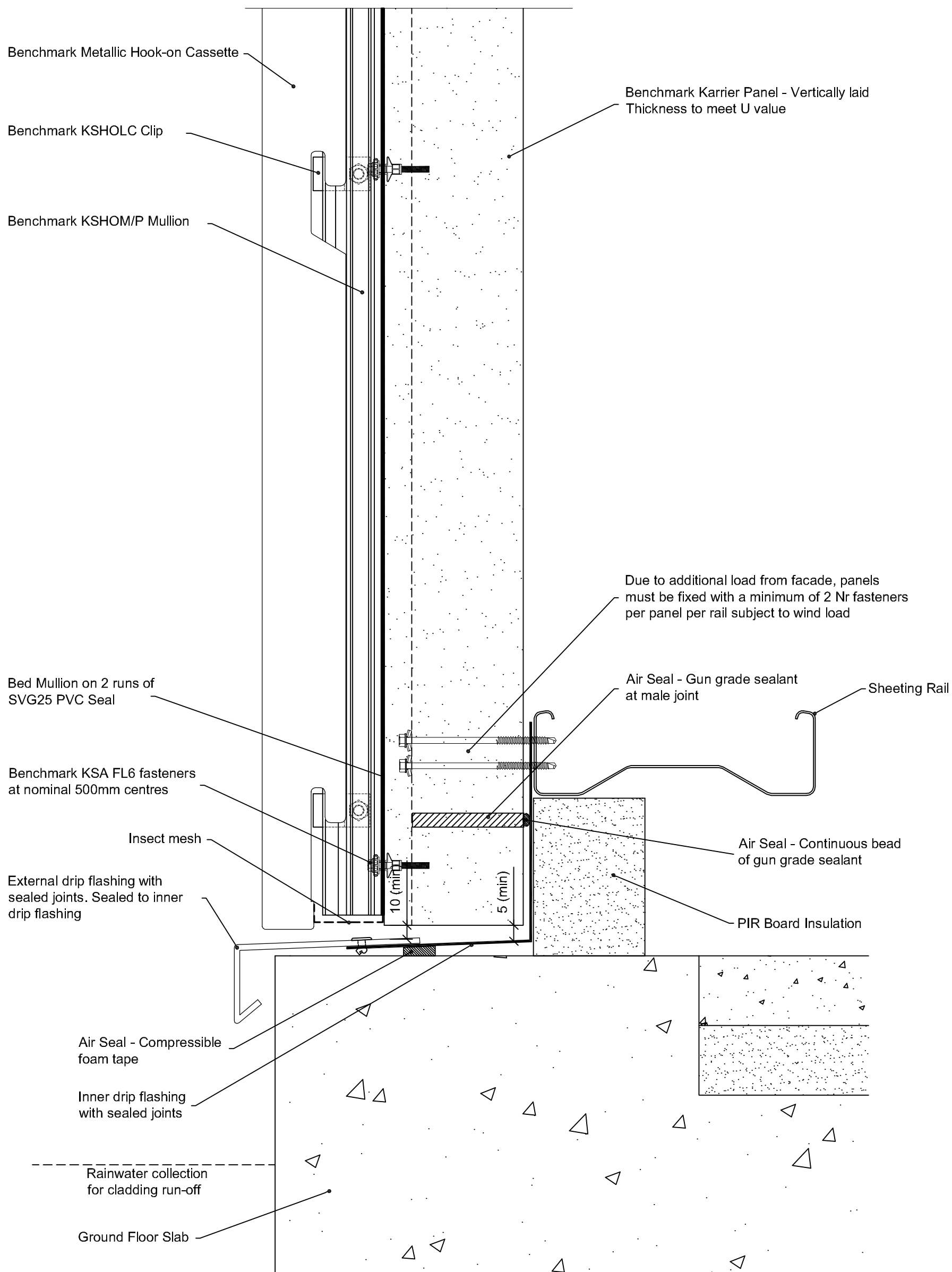


By Kingspan

© Kingspan 2013

This is a generic construction detail. Supporting (secondary) steelwork member section types and sizes are indicative only. Secondary steelwork is typically provided by the Structural Steelwork Contractor.

0 100mm



Project:

System: Karrier Panel + Metallic Hook-on Cassette - Corten

Drawing Title: Drip Detail

Drawn By: BT

Date: 03:08:2011

Drawing N°.: MHC (C) BM KP Vt 101

Rev: 0

Greenfield Business Park No.2

Greenfield, Holywell

Flintshire. CH8 7GJ

Tel: 01352 716 100

Fax: 01352 710 161

Technical: 0800 970 9036

Email: [technical@kingspanbenchmark.com](mailto:technical@kingspanbenchmark.com)

Website: [www.kingspanbenchmark.com](http://www.kingspanbenchmark.com)

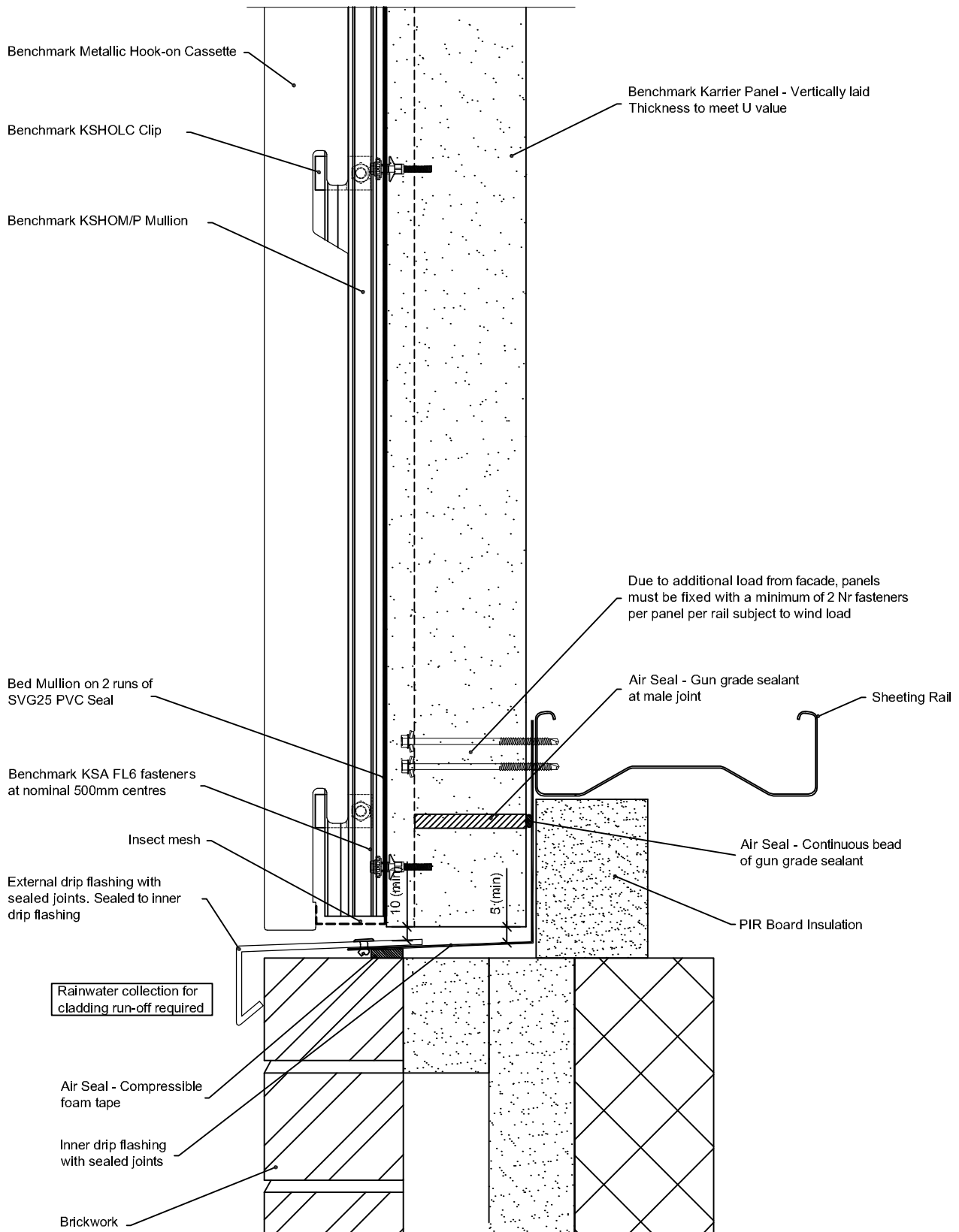


By Kingspan

© Kingspan 2013

This is a generic construction detail. Supporting (secondary) steelwork member section types and sizes are indicative only. Secondary steelwork is typically provided by the Structural Steelwork Contractor.

0 100mm



Project:

System: Karrier Panel + Metallic Hook-on Cassette - Corten

Drawing Title: Drip Detail

Drawn By: BT

Date: 03:08:2011

Drawing N°: MHC (C) BM KP Vt 102

Rev: 0

Greenfield Business Park No.2

Greenfield, Holywell

Flintshire. CH8 7GJ

Tel: 01352 716 100

Fax: 01352 710 161

Technical: 0800 970 9036

Email: [technical@kingspanbenchmark.com](mailto:technical@kingspanbenchmark.com)

Website: [www.kingspanbenchmark.com](http://www.kingspanbenchmark.com)

**BENCHMARK**

By Kingspan

© Kingspan 2013

Benchmark Karrier Panel - Vertically laid  
Thickness to meet U value

Benchmark KSHOM/P Mullion

Benchmark KSHOLC Clip

18±2

Benchmark Metallic Hook-on Cassette

Low profile head fasteners  
at 500mm maximum centers

Fire rated canister applied insulation

Vinyl faced butyl rubber sealing tape

Low profile head fasteners  
at 500mm maximum centers

Benchmark KSA FL6 fasteners  
at nominal 500mm staggered  
centres

Benchmark KSHOM/P Mullion

Sheeting Rail

Air Seal - Continuous bead of gun grade sealant

Internal cleader angle by steel sub-contractor with  
Air seal - Vapourflex sealant applied at joints

Air Seal - Continuous bead of gun grade sealant

Sheeting Rail

Bed Mullion on 2 runs of SVG25 PVC Seal

Benchmark Karrier Panel - Vertically laid  
Thickness to meet U value

Project:

System: Karrier Panel + Metallic Hook-on Cassette - Corten

Drawing Title: External Corner

Drawn By: BT

Date: 23:02:2012

Drawing N°.: MHC (C) BM KP Vt 103

Rev: 0

Greenfield Business Park No.2

Greenfield, Holywell

Flintshire. CH8 7GJ

Tel: 01352 716 100

Fax: 01352 710 161

Technical: 0800 970 9036

Email: [technical@kingspanbenchmark.com](mailto:technical@kingspanbenchmark.com)

Website: [www.kingspanbenchmark.com](http://www.kingspanbenchmark.com)

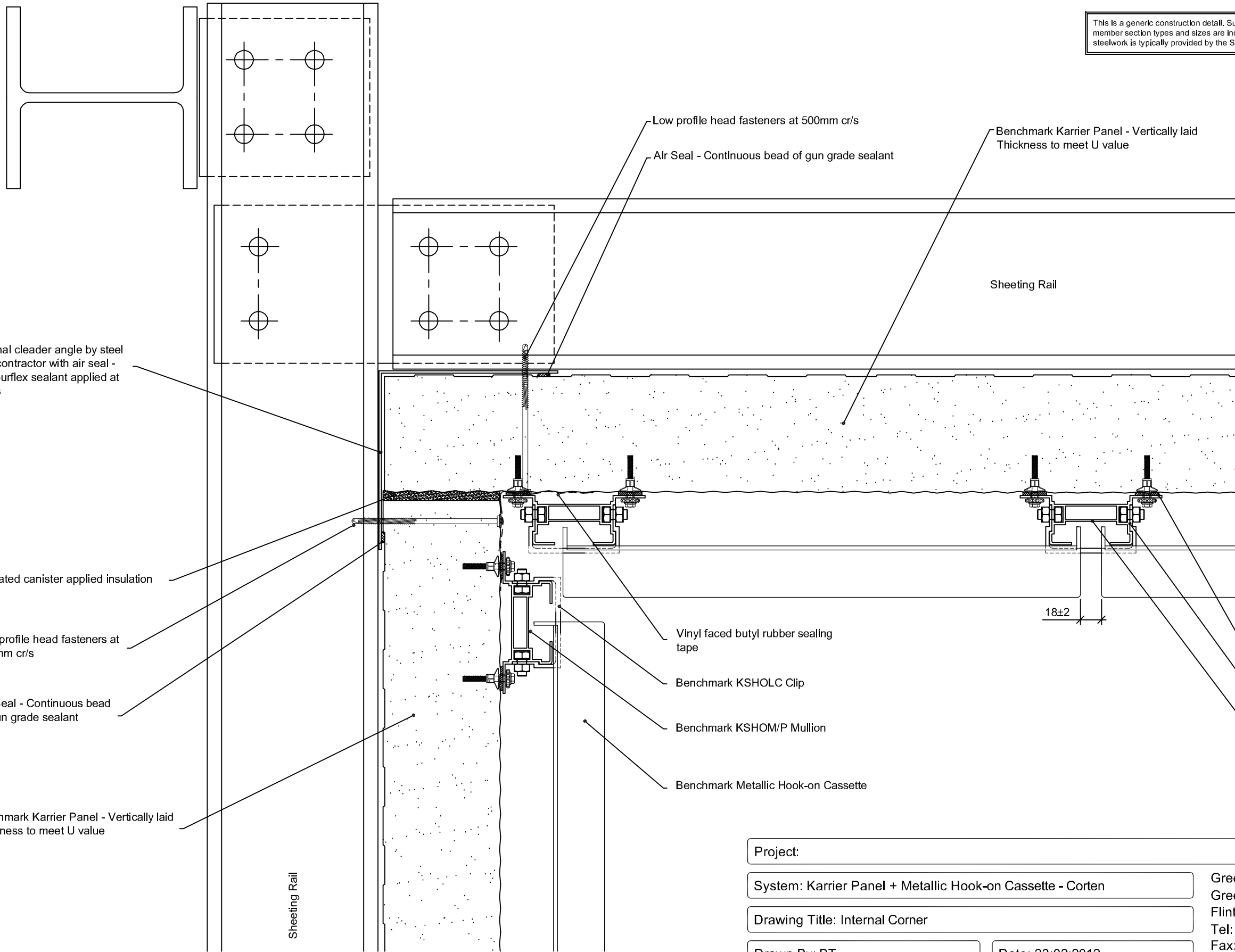


By Kingspan

© Kingspan 2013

This is a generic construction detail. Supporting (secondary) steelwork member section types and sizes are indicative only. Secondary steelwork is typically provided by the Structural Steelwork Contractor.





This is a generic construction detail. Supporting (secondary) steelwork member section types and sizes are indicative only. Secondary steelwork is typically provided by the Structural Steelwork Contractor.

0 100mm

Project:

System: Karrier Panel + Metallic Hook-on Cassette - Corten

Drawing Title: Internal Corner

Drawn By: BT

Date: 23:02:2012

Drawing N°.: MHC (C) BM KP Vt 104

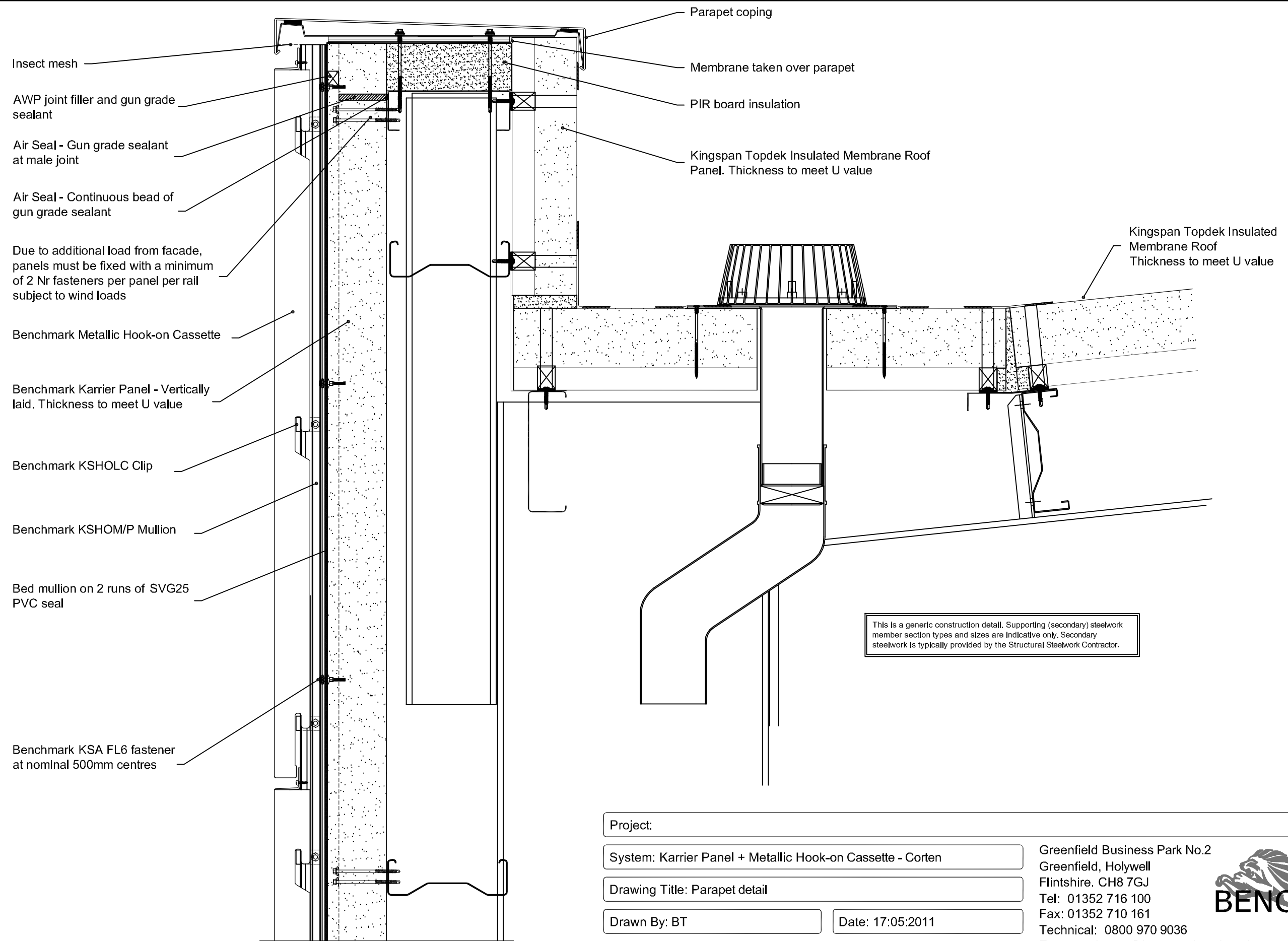
Rev: 0

Greenfield Business Park No.2  
Greenfield, Holywell  
Flintshire. CH8 7GJ  
Tel: 01352 716 100  
Fax: 01352 710 161  
Technical: 0800 970 9036  
Email: [technical@kingspanbenchmark.com](mailto:technical@kingspanbenchmark.com)  
Website: [www.kingspanbenchmark.com](http://www.kingspanbenchmark.com)



By Kingspan

© Kingspan 2013



Project:

System: Karrier Panel + Metallic Hook-on Cassette - Corten

Drawing Title: Parapet detail

Drawn By: BT

Date: 17:05:2011

Drawing N°. : MHC (C) BM KP Vt 105

Rev: 0

Greenfield Business Park No.2

Greenfield, Holywell

Flintshire. CH8 7GJ

Tel: 01352 716 100

Fax: 01352 710 161

Technical: 0800 970 9036

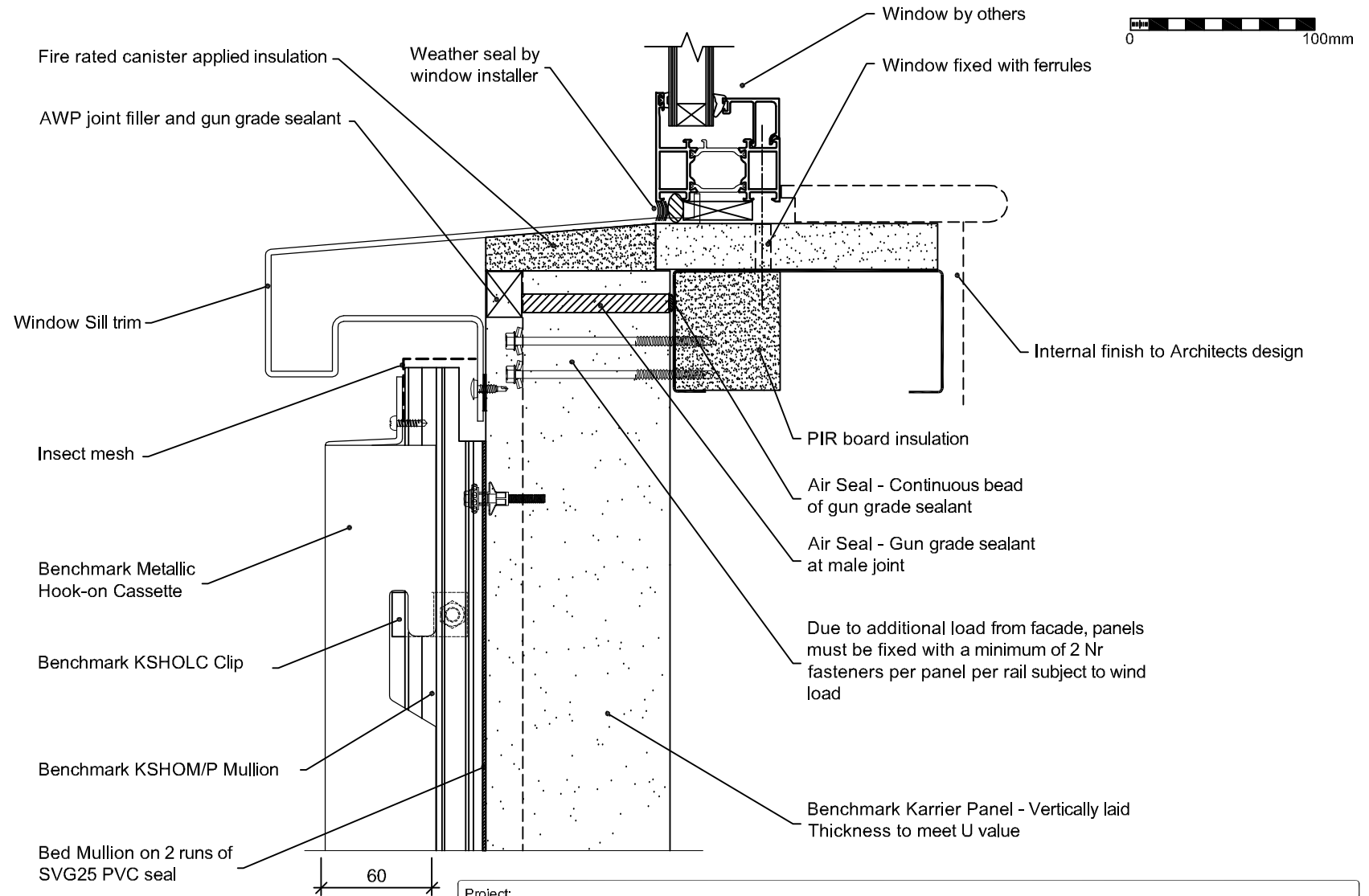
Email: [technical@kingspanbenchmark.com](mailto:technical@kingspanbenchmark.com)

Website: [www.kingspanbenchmark.com](http://www.kingspanbenchmark.com)



By Kingspan

© Kingspan 2013



This is a generic construction detail. Supporting (secondary) steelwork member section types and sizes are indicative only. Secondary steelwork is typically provided by the Structural Steelwork Contractor.

Project:

System: Karrier Panel + Metallic Hook-on Cassette - Corten

Drawing Title: Window Sill

Drawn By: BT

Date: 03:08:2011

Drawing N°: MHC (C) BM KP Vt 106

Rev: 0

Greenfield Business Park No.2  
Greenfield, Holywell  
Flintshire, CH8 7GJ  
Tel: 01352 716 100  
Fax: 01352 710 161

Technical: 0800 970 9036  
Email: [technical@kingspanbenchmark.com](mailto:technical@kingspanbenchmark.com)  
Website: [www.kingspanbenchmark.com](http://www.kingspanbenchmark.com)



By Kingspan

© Kingspan 2013

Benchmark KSHOM/P Mullion

Bed Mullion on 2 runs  
of SVG25 PVC Seal

Benchmark Metallic  
Hook-on Cassette

Benchmark KSA FL6 fasteners  
at nominal 500mm staggered  
centres

Benchmark KSHOLC Clip

Seal pod to face of panel with  
20 x 3 butyl rubber seal and  
gun grade butyl rubber pointing

Insect mesh

10 (min)

External Window Trim

Fire rated canister applied  
insulation to fill any gaps to  
maintain continuity of insulation

Weather Seal by Window Installer

Benchmark Karrier Panel -  
Vertically laid  
Thickness to meet U value

Air Seal - Gun grade sealant  
at male joint

Air Seal - Continuous bead  
of gun grade sealant

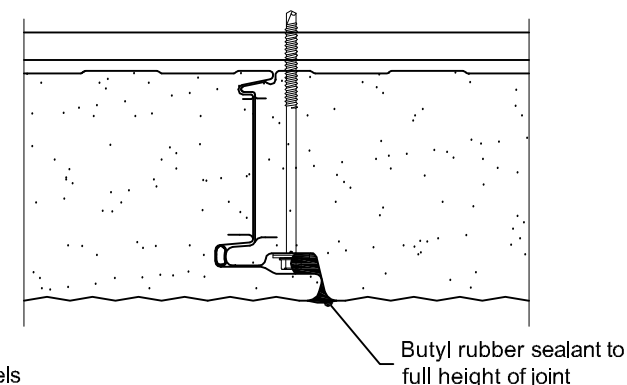
Due to additional load from facade,  
panels must be fixed with a minimum of 2 No.  
fasteners per panel per rail subject to wind  
load

PIR Board Insulation

Window Fixed With Ferrules

Window By Others

0 100mm



**Vertical Joint Detail at Window Head**

This is a generic construction detail. Supporting (secondary) steelwork member section types and sizes are indicative only. Secondary steelwork is typically provided by the Structural Steelwork Contractor.

Internal Finish To Architects Design

**Note**

Vertical panel joints above window pod to  
be sealed with butyl rubber sealant for full  
height of panel (see detail).

Project:

System: Karrier Panel + Metallic Hook-on Cassette - Corten

Drawing Title: Window Head

Drawn By: BT

Date: 03:08:2011

Drawing N°: MHC (C) BM KP Vt 107

Rev: 0

Greenfield Business Park No.2  
Greenfield, Holywell  
Flintshire, CH8 7GJ  
Tel: 01352 716 100  
Fax: 01352 710 161

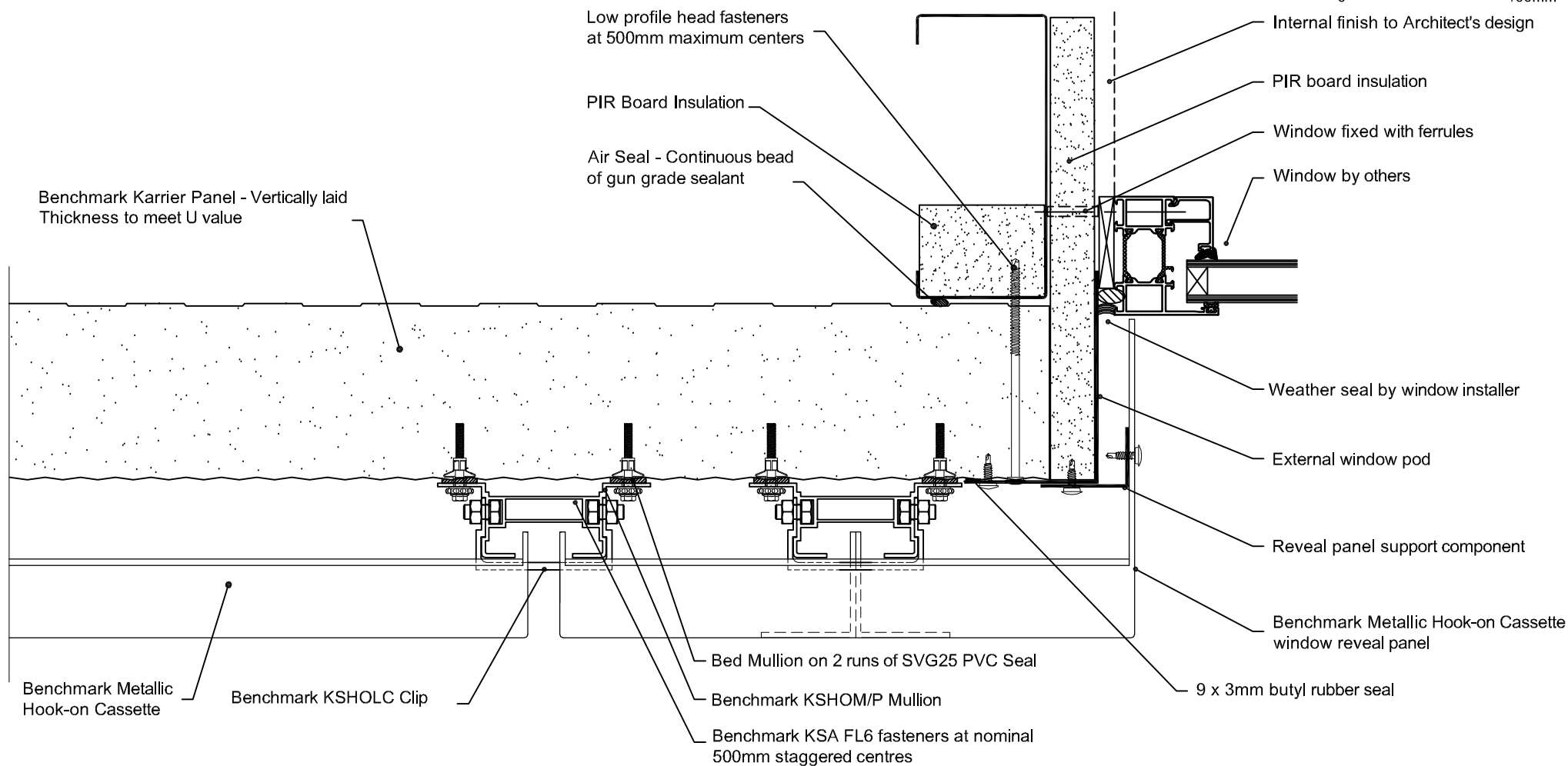
Technical: 0800 970 9036  
Email: [technical@kingspanbenchmark.com](mailto:technical@kingspanbenchmark.com)  
Website: [www.kingspanbenchmark.com](http://www.kingspanbenchmark.com)

**BENCHMARK**

By Kingspan

© Kingspan 2013





This is a generic construction detail. Supporting (secondary) steelwork member section types and sizes are indicative only. Secondary steelwork is typically provided by the Structural Steelwork Contractor.

Project:

System: Karrier Panel + Metallic Hook-on Cassette - Corten

Drawing Title: Window Jamb

Drawn By: BT

Date: 03:08:2011

Drawing N°: MHC (C) BM KP Vt 108

Rev: 0

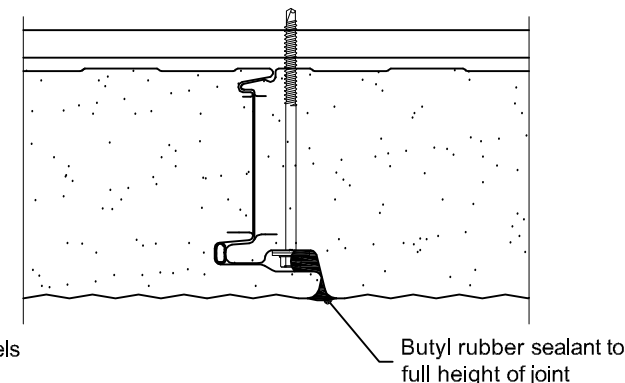
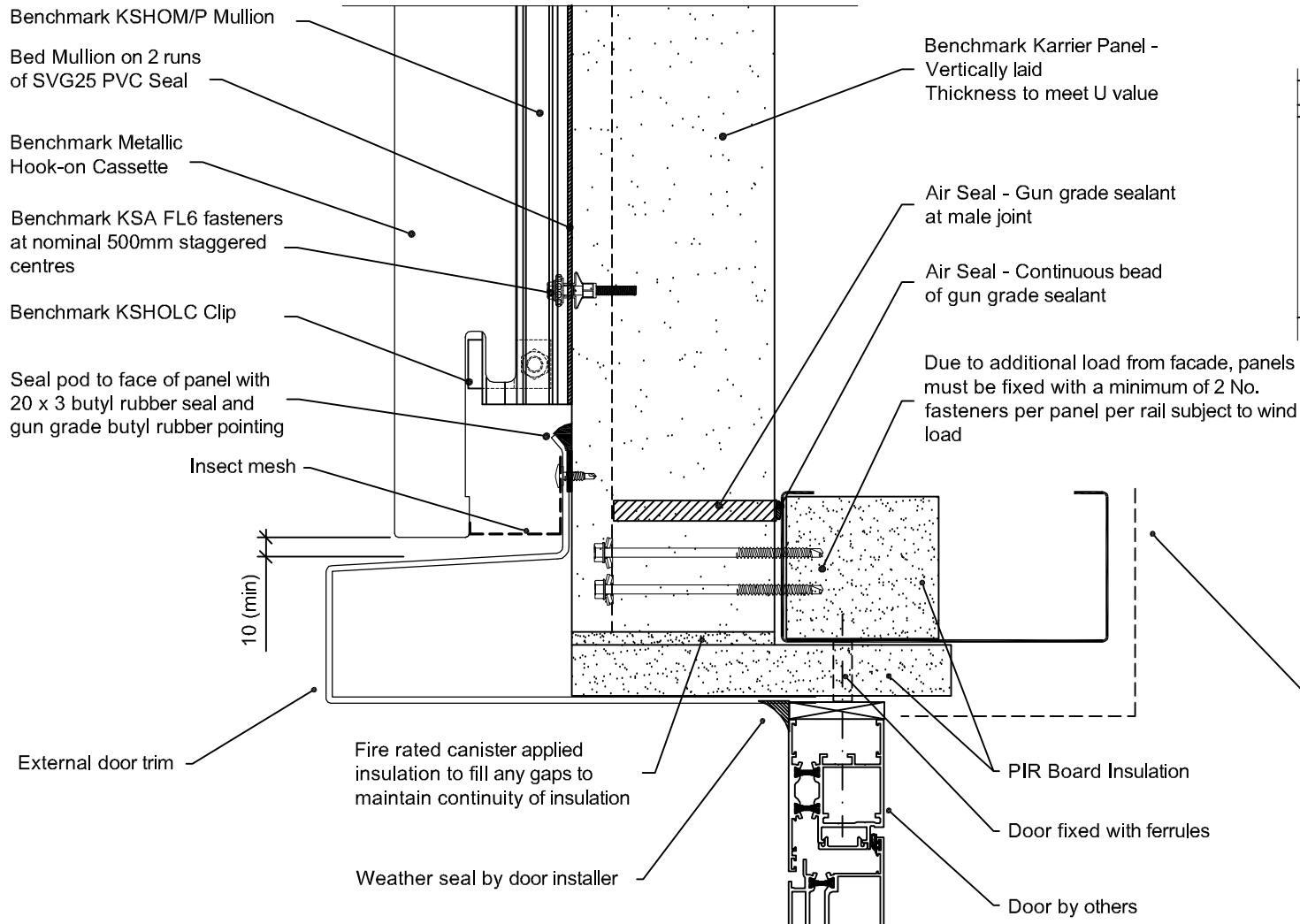
Greenfield Business Park No.2  
Greenfield, Holywell  
Flintshire, CH8 7GJ  
Tel: 01352 716 100  
Fax: 01352 710 161  
Technical: 0800 970 9036

Email: [technical@kingspanbenchmark.com](mailto:technical@kingspanbenchmark.com)  
Website: [www.kingspanbenchmark.com](http://www.kingspanbenchmark.com)



By Kingspan

© Kingspan 2013



**Vertical Joint Detail at Door Head**

This is a generic construction detail. Supporting (secondary) steelwork member section types and sizes are indicative only. Secondary steelwork is typically provided by the Structural Steelwork Contractor.

Internal finish to Architects design

**Note**  
Vertical panel joints above door pod to be sealed with butyl rubber sealant for full height of panel (see detail).

Project:

System: Karrier Panel + Metallic Hook-on Cassette - Corten

Drawing Title: Door Head

Drawn By: BT

Date: 17:05:2011

Drawing N°: MHC (C) BM KP Vt 109

Rev: 0

Greenfield Business Park No.2  
Greenfield, Holywell  
Flintshire, CH8 7GJ  
Tel: 01352 716 100  
Fax: 01352 710 161

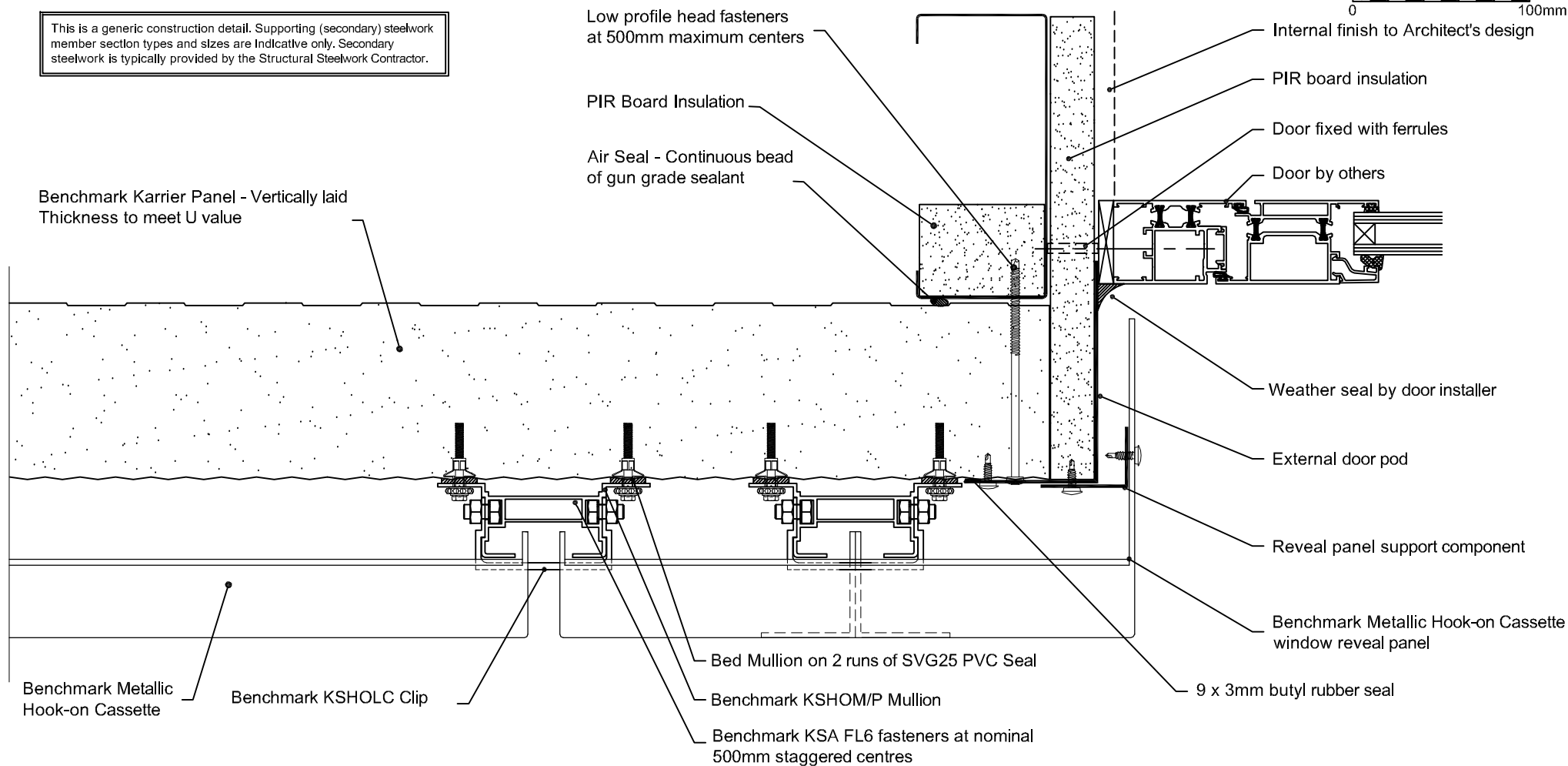
Technical: 0800 970 9036  
Email: [technical@kingspanbenchmark.com](mailto:technical@kingspanbenchmark.com)  
Website: [www.kingspanbenchmark.com](http://www.kingspanbenchmark.com)



By Kingspan

© Kingspan 2013

This is a generic construction detail. Supporting (secondary) steelwork member section types and sizes are indicative only. Secondary steelwork is typically provided by the Structural Steelwork Contractor.



Project:

System: Karrier Panel + Metallic Hook-on Cassette - Corten

Drawing Title: Door Jamb

Drawn By: BT

Date: 17:05:2011

Drawing N°: MHC (C) BM KP Vt 110

Rev: 0

Greenfield Business Park No.2  
Greenfield, Holywell  
Flintshire, CH8 7GJ  
Tel: 01352 716 100  
Fax: 01352 710 161

Technical: 0800 970 9036  
Email: [technical@kingspanbenchmark.com](mailto:technical@kingspanbenchmark.com)  
Website: [www.kingspanbenchmark.com](http://www.kingspanbenchmark.com)



By Kingspan

© Kingspan 2013

Benchmark Metallic  
Hook-on Cassette

Benchmark KSHOM/P  
Mullion

Bed Mullion on 2 runs  
of SVG25 PVC Seal

Benchmark KSA FL6  
fasteners at nominal  
500mm centres

Benchmark  
KSHOLC Clip

Insect mesh

10 (min)

External drip trim with sealed joints. Sealed  
to face of panel with 20 x 3 butyl rubber seal  
and gun grade butyl rubber pointing

EPDM Membrane (by  
others) installed in sequence  
on site

Curtain walling system (by others)

Benchmark Karrier Panel -  
Vertically laid  
Thickness to meet U value

Air Seal - Gun grade sealant  
at male joint

Air Seal - Continuous bead of  
gun grade sealant

Due to additional load from  
facade, panels must be fixed  
with a minimum of 2 Nr  
fasteners per panel per rail  
subject to wind loads

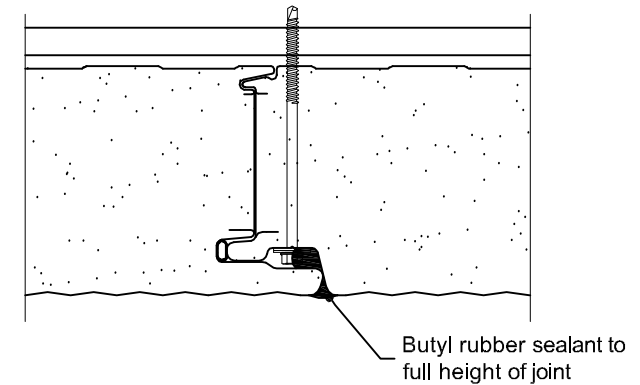
PIR Insulation board

Internal Finish To Architects Design

Air Seal - Internal Membrane  
(by others) installed in  
sequence on site

PIR Insulation board

0 100mm



**Vertical Joint Detail at Curtain Walling Head**

This is a generic construction detail. Supporting (secondary) steelwork member section types and sizes are indicative only. Secondary steelwork is typically provided by the Structural Steelwork Contractor.

**Note**

Vertical panel joints above curtain walling  
to be sealed with butyl rubber sealant for  
full height of panel (see detail).

Project:

System: Karrier Panel + Metallic Hook-on Cassette - Corten

Drawing Title: Curtain Walling Head

Drawn By: BT

Date: 17:05:2011

Drawing N°: MHC (C) BM KP Vt 111

Rev: 0

Greenfield Business Park No.2  
Greenfield, Holywell  
Flintshire, CH8 7GJ  
Tel: 01352 716 100  
Fax: 01352 710 161

Technical: 0800 970 9036  
Email: [technical@kingspanbenchmark.com](mailto:technical@kingspanbenchmark.com)  
Website: [www.kingspanbenchmark.com](http://www.kingspanbenchmark.com)



By Kingspan

© Kingspan 2013

This is a generic construction detail. Supporting (secondary) steelwork member section types and sizes are indicative only. Secondary steelwork is typically provided by the Structural Steelwork Contractor.

0 100mm

Low profile head fasteners at 500mm maximum centers

PIR Board Insulation

Air Seal - Continuous bead of gun grade sealant

Internal finish to Architect's design

Air Seal - Internal Membrane (by others) installed in sequence on site

PIR board insulation

Curtain walling system (by others)

EPDM Membrane (by others) installed in sequence on site

Benchmark Karrier Panel - Vertically laid  
Thickness to meet U value

Benchmark Metallic Hook-on Cassette

Benchmark KSHOLC Clip

Bed Mullion on 2 runs of SVG25 PVC Seal

Benchmark KSHOM/P Mullion

Benchmark KSA FL6 fasteners at nominal 500mm staggered centres

Project:

System: Karrier Panel + Metallic Hook-on Cassette - Corten

Drawing Title: Curtain Walling Jamb

Drawn By: BT

Date: 17:05:2011

Drawing N°: MHC (C) BM KP Vt 112

Rev: 0

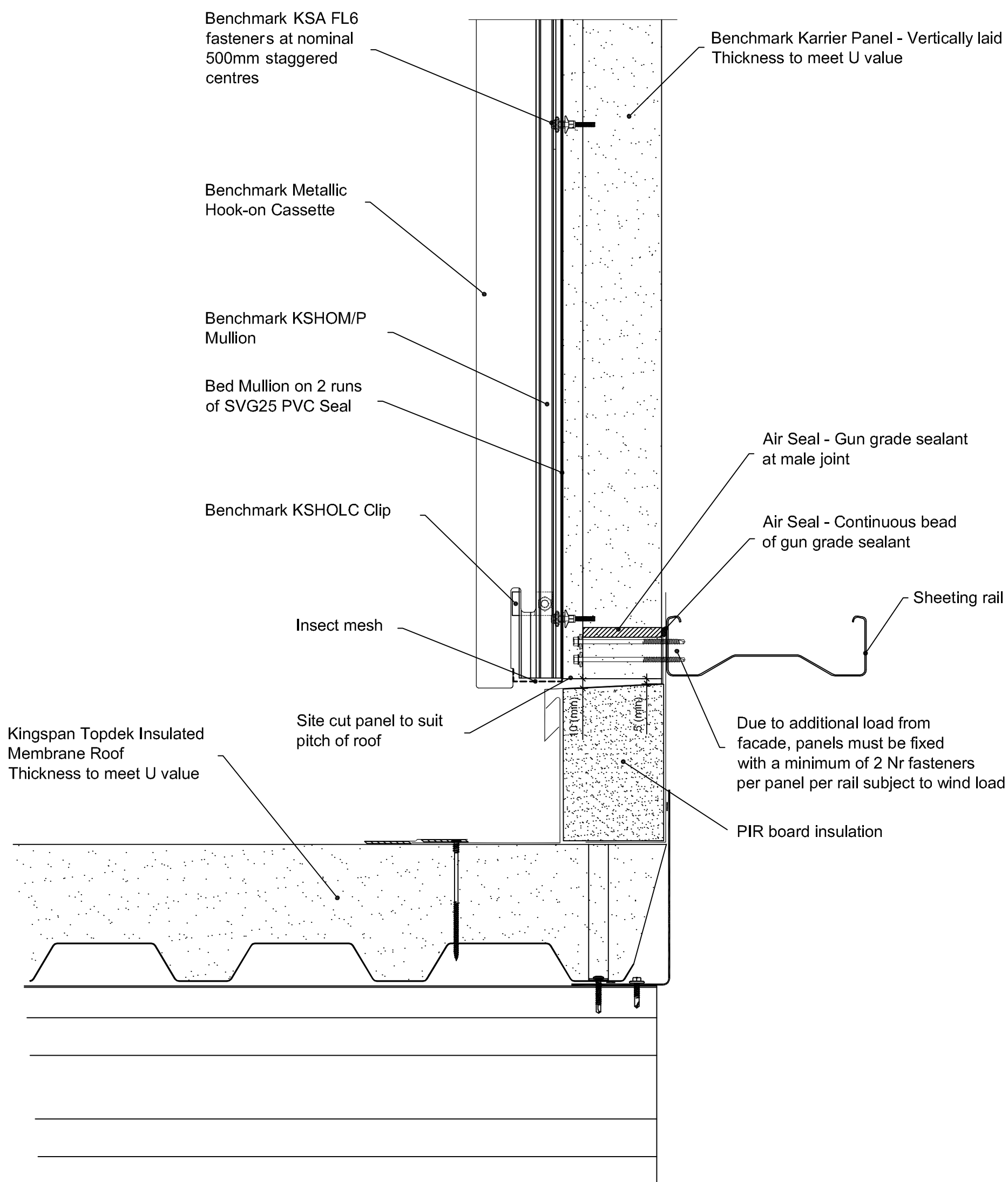
Greenfield Business Park No.2  
Greenfield, Holywell  
Flintshire, CH8 7GJ  
Tel: 01352 716 100  
Fax: 01352 710 161

Technical: 0800 970 9036  
Email: [technical@kingspanbenchmark.com](mailto:technical@kingspanbenchmark.com)  
Website: [www.kingspanbenchmark.com](http://www.kingspanbenchmark.com)



By Kingspan

© Kingspan 2013



This is a generic construction detail. Supporting (secondary) steelwork member section types and sizes are indicative only. Secondary steelwork is typically provided by the Structural Steelwork Contractor.

Project:

System: Karrier Panel + Metallic Hook-on Cassette - Corten

Drawing Title: Spandrel Detail

Drawn By: BT

Date: 17:05:2011

Drawing N°.: MHC (C) BM KP Vt 118

Rev: 0

Greenfield Business Park No.2

Greenfield, Holywell

Flintshire, CH8 7GJ

Tel: 01352 716 100

Fax: 01352 710 161

Technical: 0800 970 9036

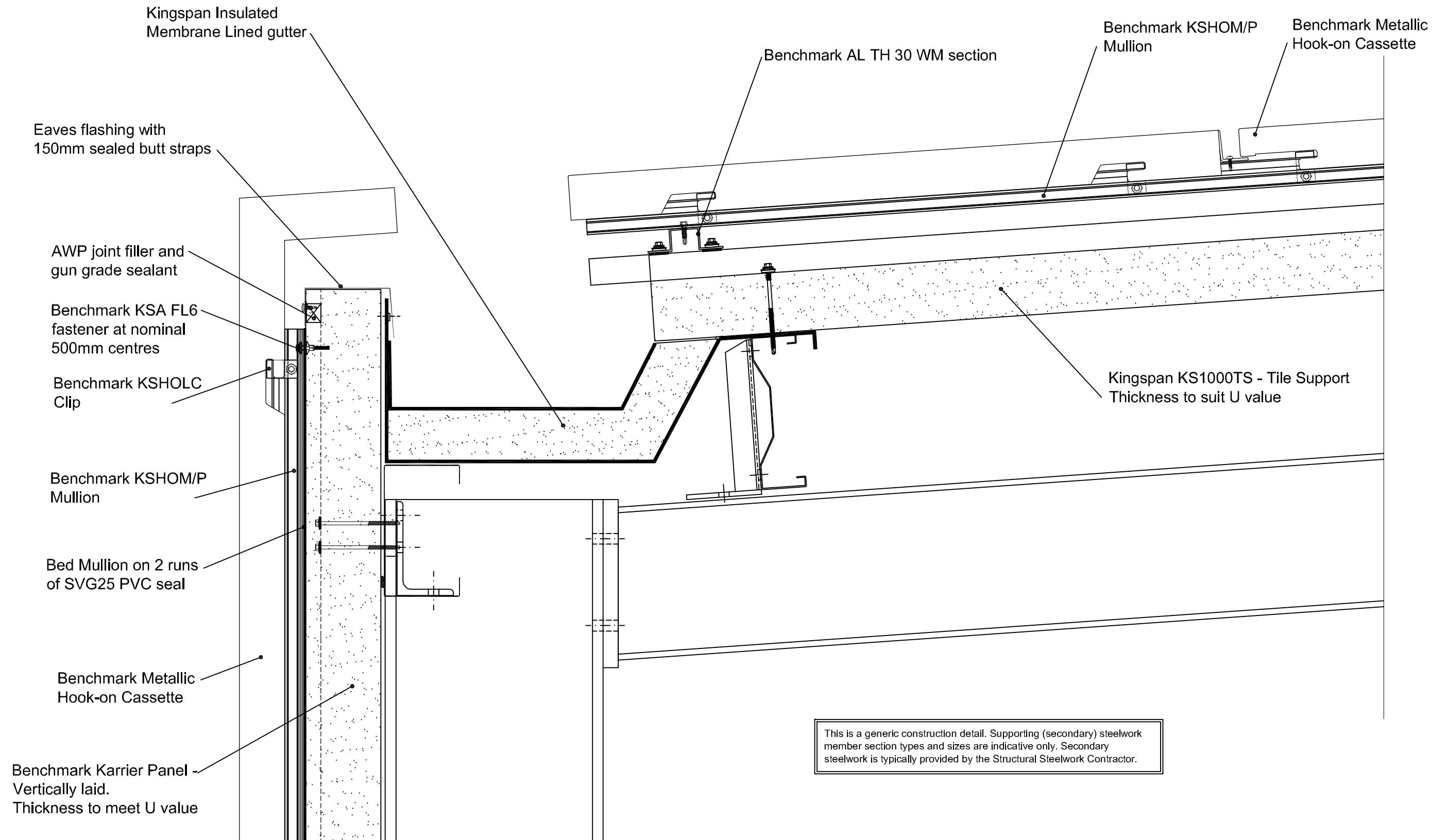
Email: [technical@kingspanbenchmark.com](mailto:technical@kingspanbenchmark.com)

Website: [www.kingspanbenchmark.com](http://www.kingspanbenchmark.com)



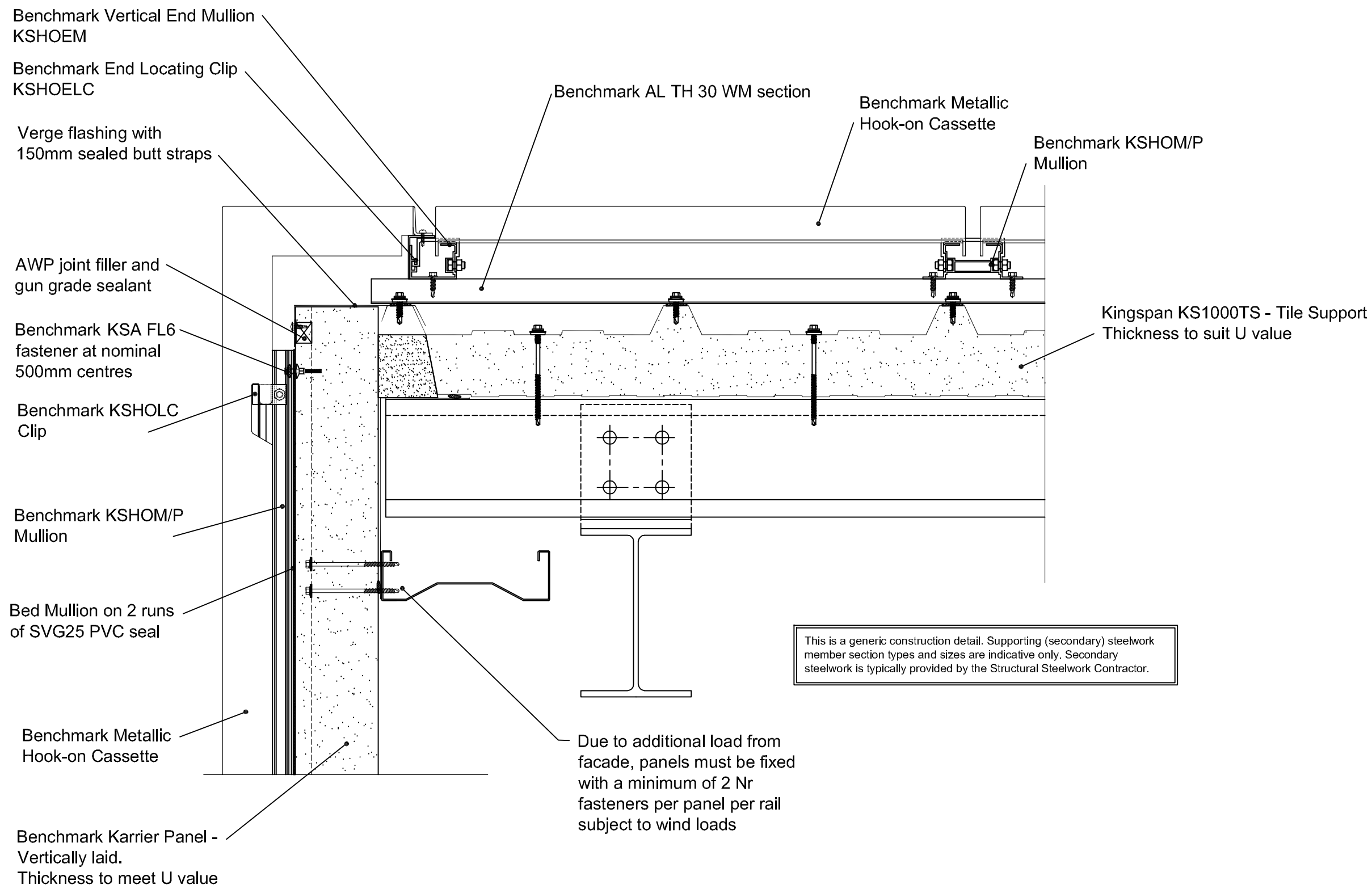
By Kingspan

© Kingspan 2013



Project:		<div><p>By Kingspan</p><p>© Kingspan 2013</p></div>
System: Karrier Panel + Metallic Hook-on Cassette - Corten		
Drawing Title: Eaves Detail		
Drawn By: AE	Date: 21/09/2011	
Dwg N°. MHC (C) BM KP Vt 120	Rev: 0	

Greenfield Business Park No.2  
Greenfield, Holywell  
Flintshire. CH8 7GJ  
Tel: 01352 716 100  
Fax: 01352 710 161  
Technical: 0800 970 9036  
Email: [technical@kingspanbenchmark.com](mailto:technical@kingspanbenchmark.com)  
Website: [www.kingspanbenchmark.com](http://www.kingspanbenchmark.com)



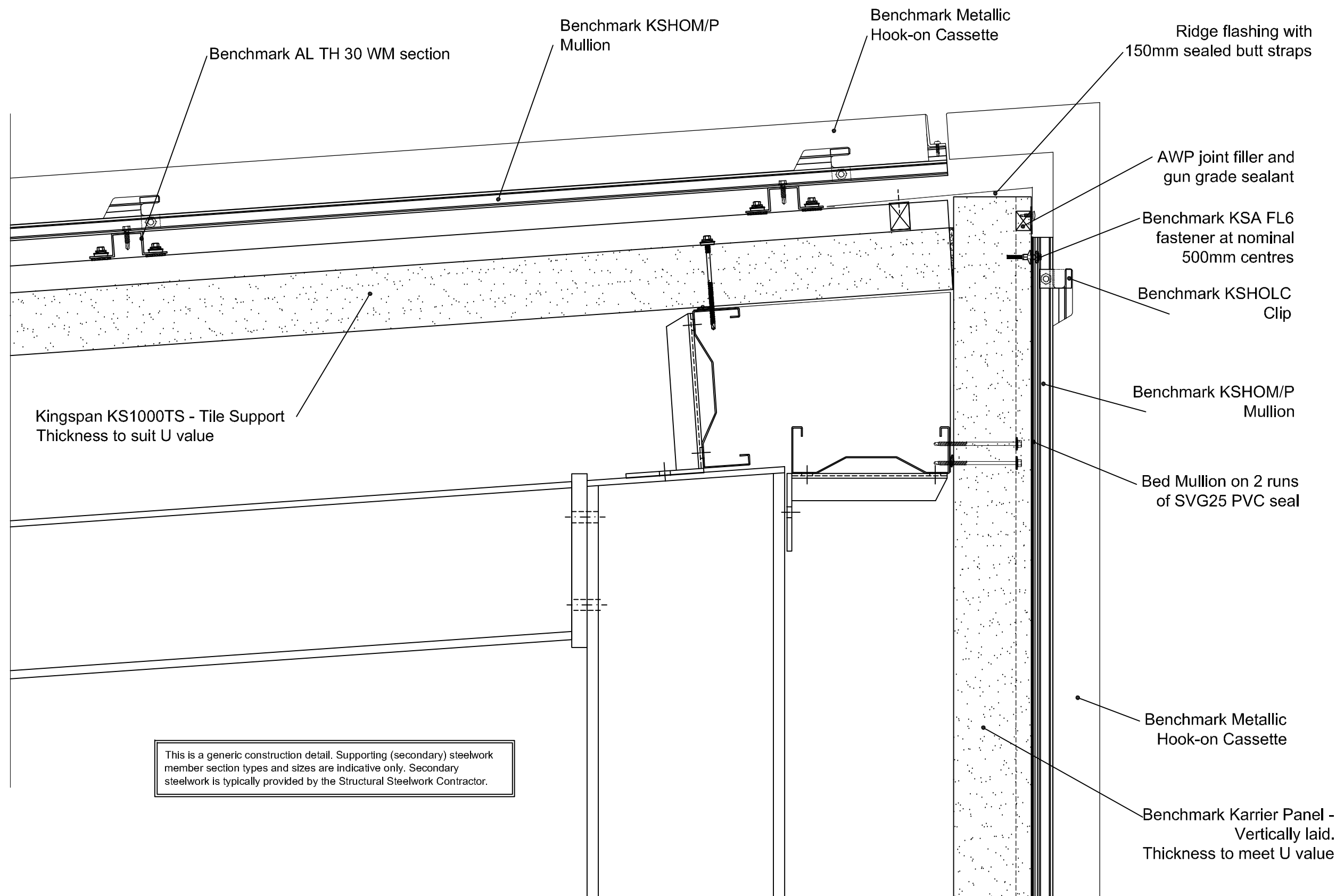
Project:		Greenfield Business Park No.2	
System: Karrier Panel + Metallic Hook-on Cassette - Corten		Greenfield, Holywell	
Drawing Title: Verge Detail		Flintshire. CH8 7GJ	
Drawn By: AE		Tel: 01352 716 100	
Dwg N°. MHC (C) BM KP Vt 121		Fax: 01352 710 161	
Rev: 0		Technical: 0800 970 9036	
		Email: technical@kingspanbenchmark.com	
		Website: www.kingspanbenchmark.com	




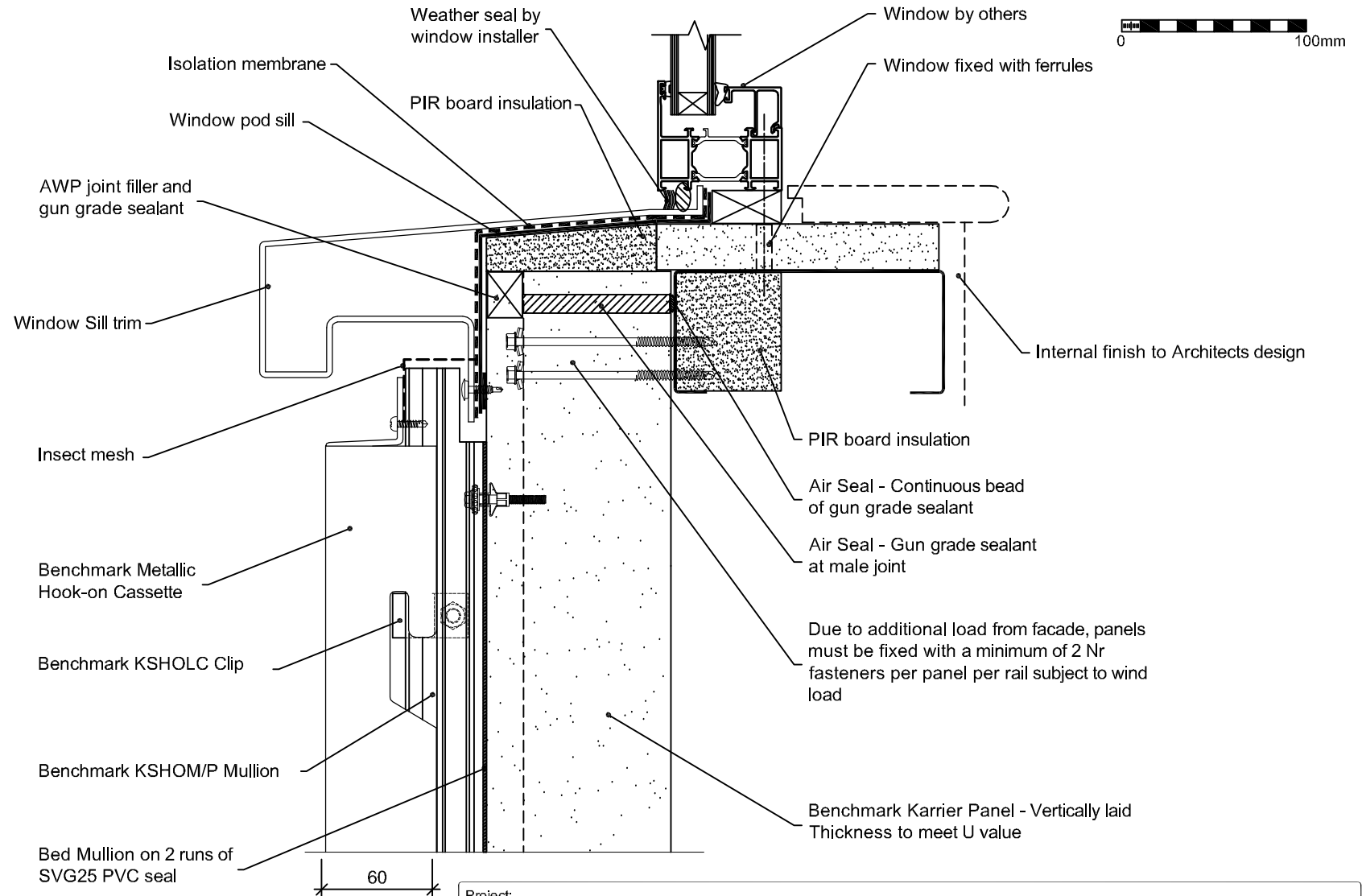
By Kingspan

© Kingspan 2013





Project:		Greenfield Business Park No.2 Greenfield, Holywell Flintshire. CH8 7GJ Tel: 01352 716 100 Fax: 01352 710 161 Technical: 0800 970 9036 Email: <a href="mailto:technical@kingspanbenchmark.com">technical@kingspanbenchmark.com</a> Website: <a href="http://www.kingspanbenchmark.com">www.kingspanbenchmark.com</a>	
System: Karrier Panel + Metallic Hook-on Cassette - Corten		 By Kingspan © Kingspan 2013	
Drawing Title: Mono-Ridge Detail			
Drawn By: AE	Date: 21/09/2011		
Dwg N°. MHC (C) BM KP Vt 122	Rev: 0		



This is a generic construction detail. Supporting (secondary) steelwork member section types and sizes are indicative only. Secondary steelwork is typically provided by the Structural Steelwork Contractor.

Project:

System: Karrier Panel + Metallic Hook-on Cassette - Corten

Drawing Title: Window Sill

Drawn By: BT

Date: 03:04:2012

Drawing N°: MHC (C) BM KP Vt 123

Rev: 0

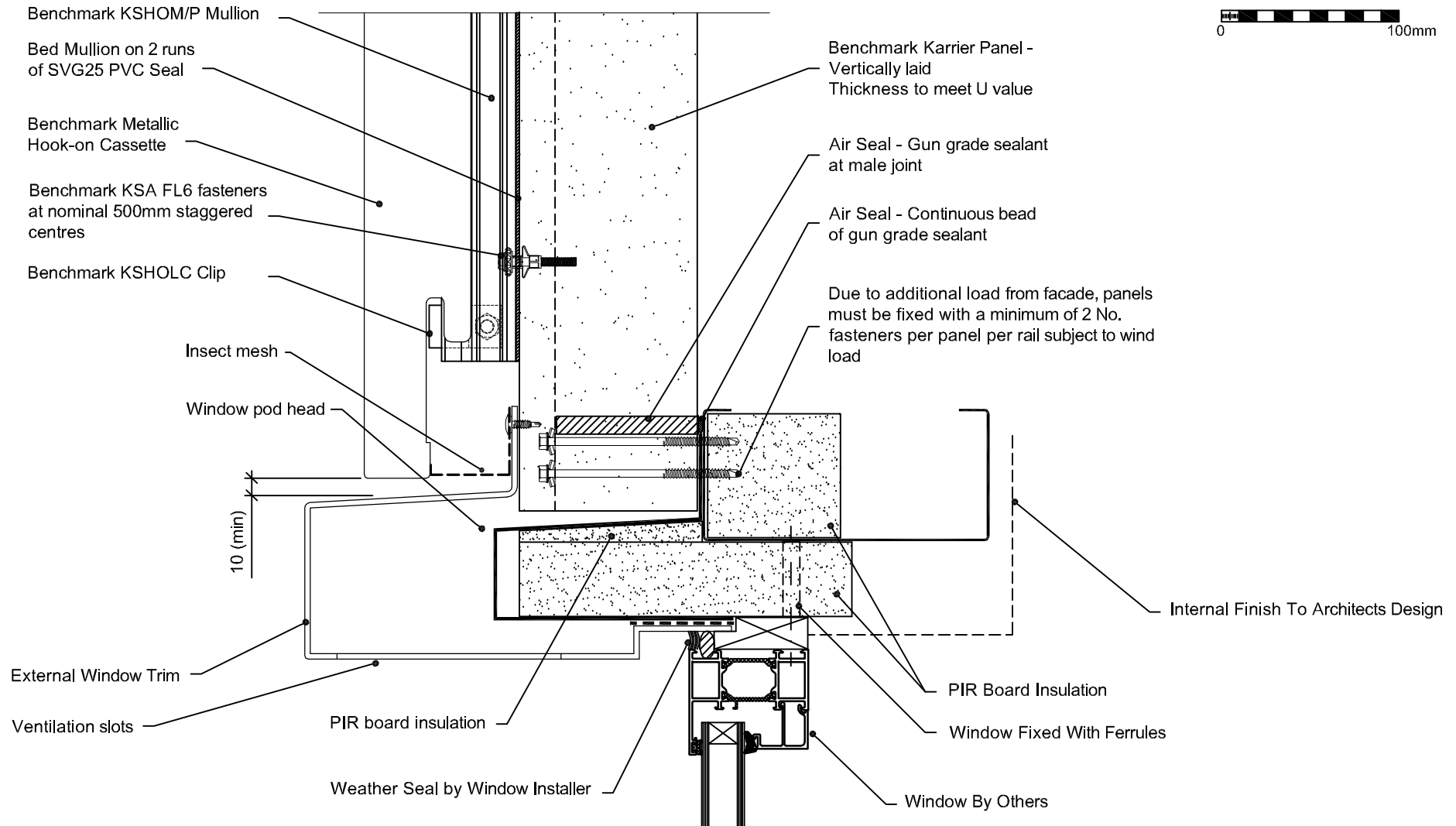
Greenfield Business Park No.2  
Greenfield, Holywell  
Flintshire, CH8 7GJ  
Tel: 01352 716 100  
Fax: 01352 710 161

Technical: 0800 970 9036  
Email: [technical@kingspanbenchmark.com](mailto:technical@kingspanbenchmark.com)  
Website: [www.kingspanbenchmark.com](http://www.kingspanbenchmark.com)



By Kingspan

© Kingspan 2013



This is a generic construction detail. Supporting (secondary) steelwork member section types and sizes are indicative only. Secondary steelwork is typically provided by the Structural Steelwork Contractor.

Project:

System: Karrier Panel + Metallic Hook-on Cassette - Corten

Drawing Title: Window Head

Drawn By: BT

Date: 03:04:2012

Drawing N°: MHC (C) BM KP Vt 124

Rev: 0

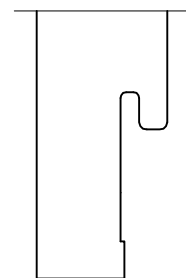
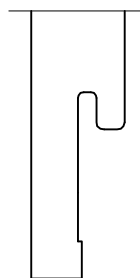
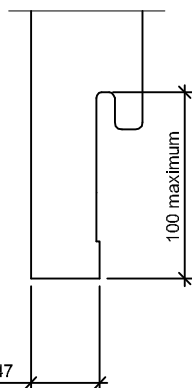
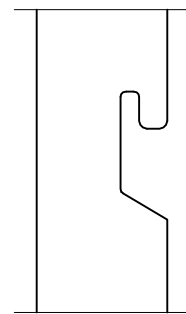
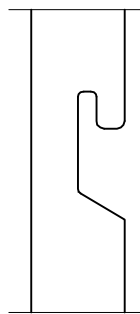
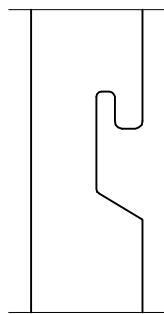
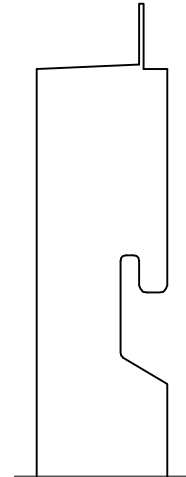
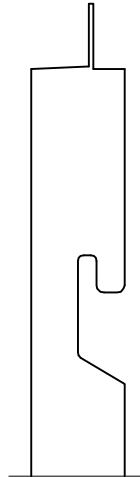
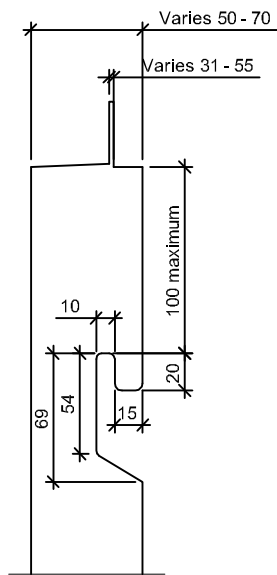
Greenfield Business Park No.2  
Greenfield, Holywell  
Flintshire, CH8 7GJ  
Tel: 01352 716 100  
Fax: 01352 710 161

Technical: 0800 970 9036  
Email: [technical@kingspanbenchmark.com](mailto:technical@kingspanbenchmark.com)  
Website: [www.kingspanbenchmark.com](http://www.kingspanbenchmark.com)



By Kingspan

© Kingspan 2013



Varies 27 - 47

Project:

System: Karrier Panel + Metallic Hook-on Cassette

Drawing Title: Cassette Hook and Flange Details

Drawn By: BT

Date: 25/11/2013

Drawing N°: MHC (C) BM KP Vt 125

Rev: A

Greenfield Business Park No.2

Greenfield, Holywell

Flintshire. CH8 7GJ

Tel: 01352 716 100

Fax: 01352 710 161

Technical: 0800 970 9036

Email: [technical@kingspanbenchmark.com](mailto:technical@kingspanbenchmark.com)

Website: [www.kingspanbenchmark.com](http://www.kingspanbenchmark.com)



By Kingspan

© Kingspan 2013