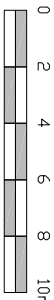


NOTES

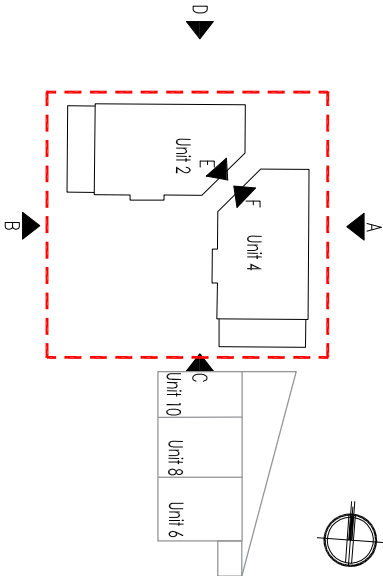
- All dimensions and levels are to be checked on site.
- Any discrepancies are to be reported to the architect before work to ground starts only.
- The drawing shall not be reproduced without express written permission from AEW.
- Title overlays drawings and ownership boundaries are produced using all measurable evidence. AEW cannot be held responsible for any or all discrepancies of those plans supplied to them.

DESIGN HAZARD IDENTIFICATION

- No significant hazards have been identified in this drawing



Scale 1:200 @ A2



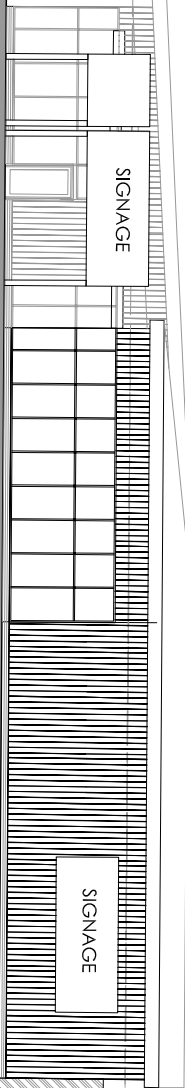
Unit 4

Unit 2

Ushaunch 4500

SIGNAGE

Ushaunch 4500



D: North Facing Elevation

Unit 6

Unit 8

Unit 10

Ushaunch 7290

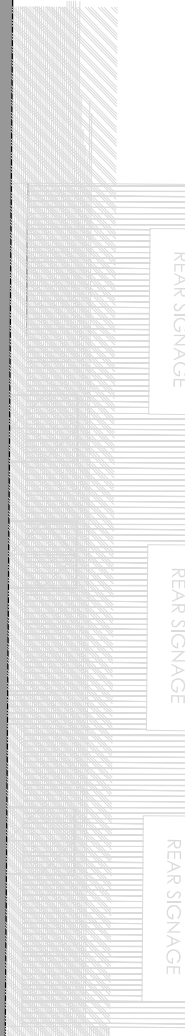
REAR SIGNAGE

REAR SIGNAGE

REAR SIGNAGE

Ushaunch 4500

SIGNAGE



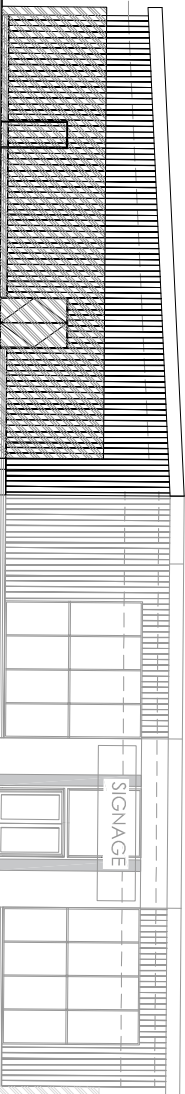
A: East Facing Elevation

Unit 2

Unit 4

Ushaunch 4500

SIGNAGE



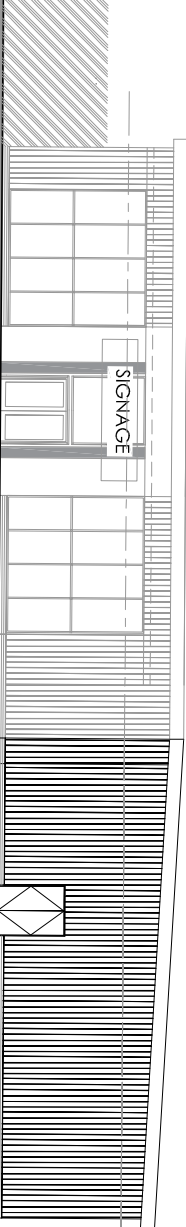
B: West Facing Elevation

Unit 2

Unit 4

Ushaunch 4500

SIGNAGE



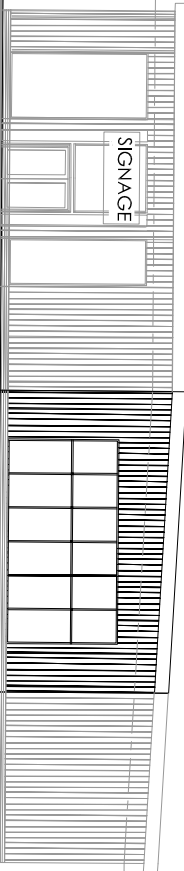
C: South Facing Elevation

Unit 2

Ushaunch 5393

SIGNAGE

Ushaunch 4500



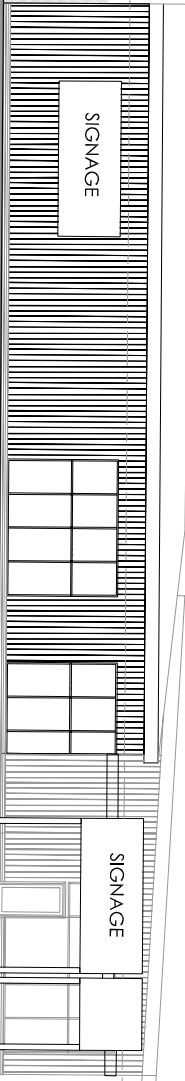
F: North- West Facing Elevation

Unit 4

Unit 2

Ushaunch 6500

SIGNAGE



Unit 10

Unit 8

Unit 6

SIGNAGE

SIGNAGE

SIGNAGE

SIGNAGE



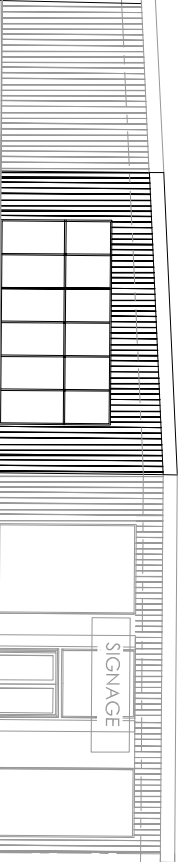
E: South- East Facing Elevation

Unit 4

Ushaunch 4500

Ushaunch 5393

SIGNAGE



Project	Liverpool Shopping Park Edge Lane Block 6Units 2-10
drawing title	Proposed Elevations Units 2 & 4
client	Derwent Estates
Rev	Rev
Initial Issue	Initial Issue
REV	Date
Drawn By:-	Checked By:-
State	Purpose of Issue
S2	For Information
drawing stage	Planning