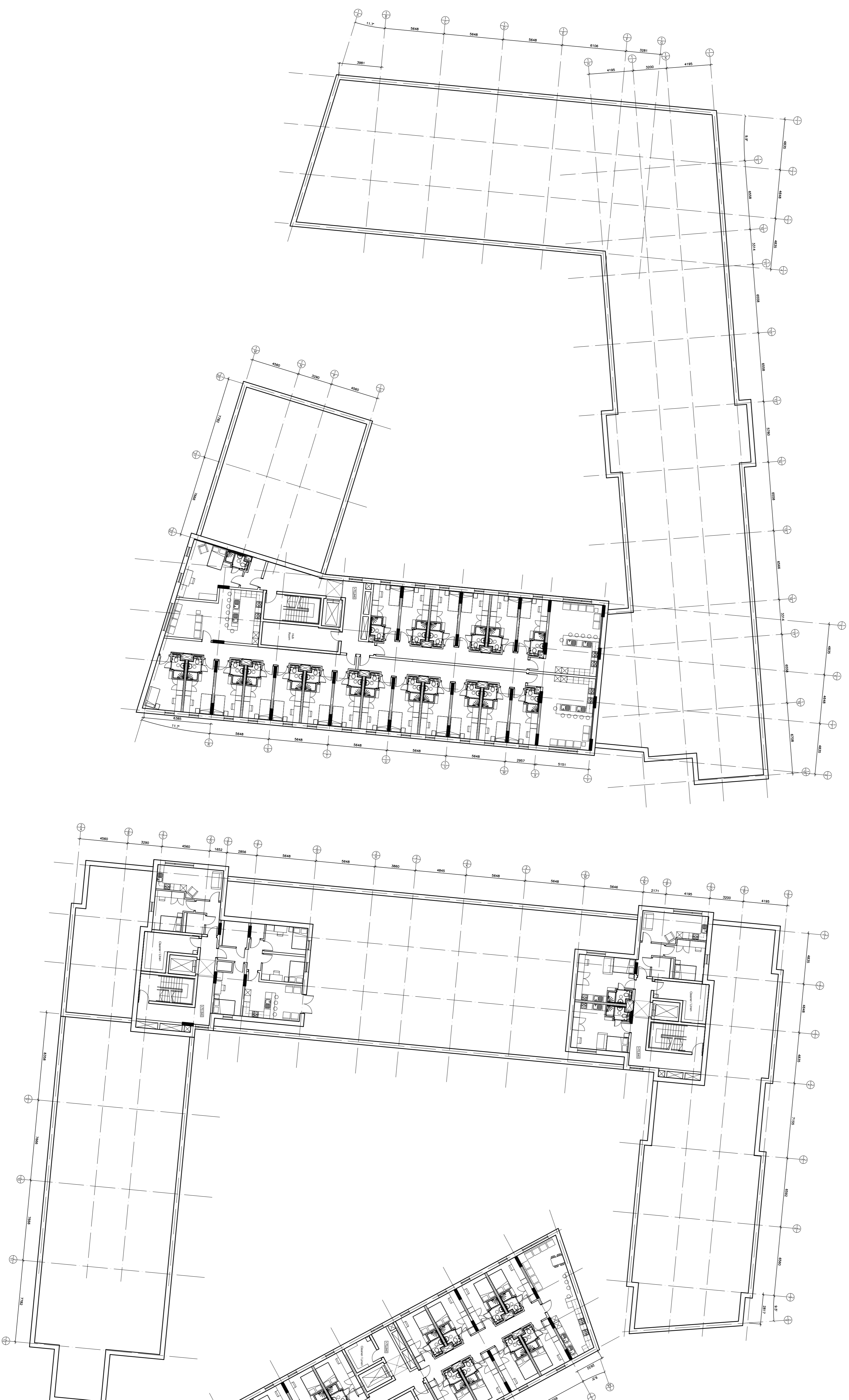
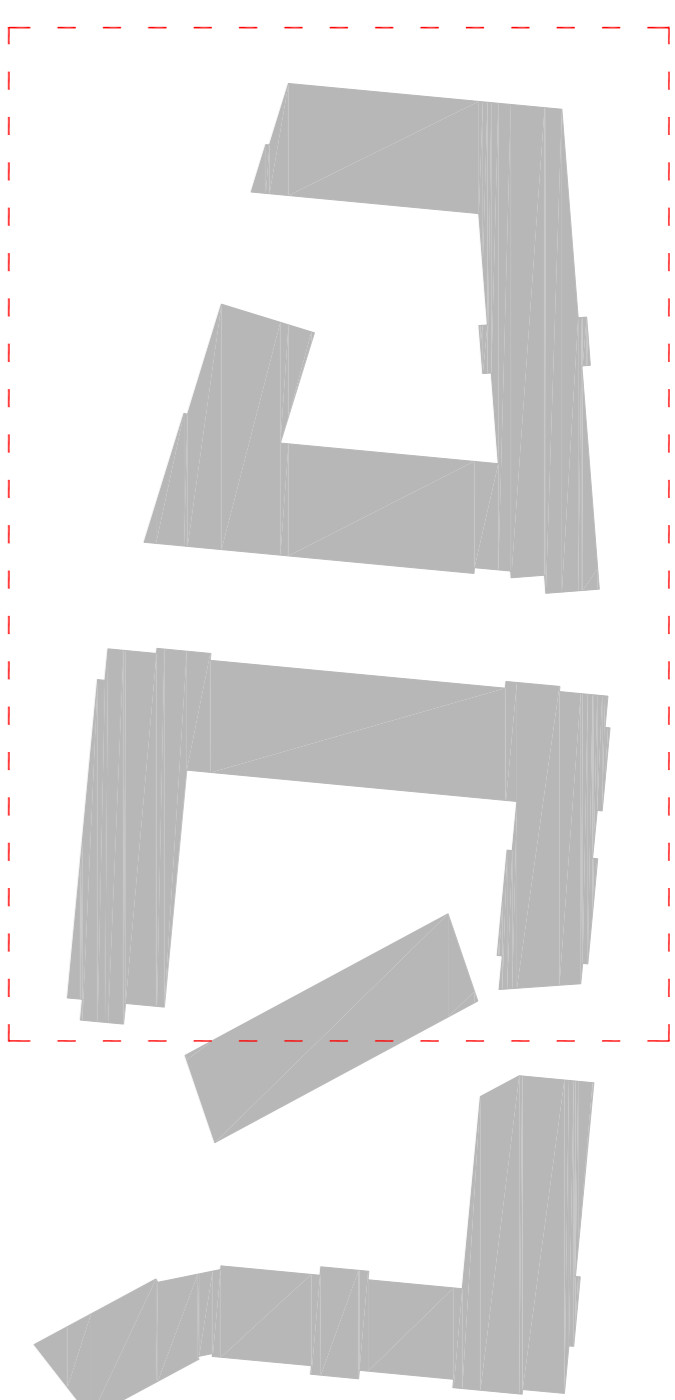


ORIGINAL A1

authorised user of the following

- prior to implementation and report any discrepancies to the Architect / Designer.

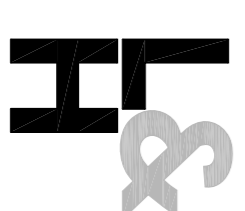
NOTE: DRAWING TO BE READ IN CONJUNCTION WITH SIE AND M&E DRAWINGS



REV	DATE	DESCRIPTION	DRN	CHKD
B	16.05.12	Issued for planning	TE	MH
A	15.03.12	Issued for tender	TE	MH

Ocon Construction

PROJECT
Crown Court
Liverpool

DRAWING
GA Eighth Floor Plan
1/2

**LEWIS AND
HICKEY**

Knot Mill
7 Constance Street
Manchester, M15 4JQ

Tel: 0161 236 2422
Fax: 0161 236 2499
Email: manchester@lewis-hickey.com

SCALE	DATE	DRAWN	CHECKED
1:200	20.02.12	TE	MH
PROJECT No	DRAWING No	STATUS	REV
M2210	L(2)-1017	P	B