

WARNING – WORKING AT HEIGHT

WHEN WORKING AT HEIGHT MAKE SURE YOU FOLLOW THE 3 MAIN POINTS WHEN INSTALLING DUTING, PREWORK, RUN WATER PIPES, SOIL STACKS, COMBUSTIBLE CABLES, LIGHTNING PROTECTION, ETC.

1. PLAN, ORGANISE AND CARRY OUT THE WORK IN A SAFE MANNER USING COMPETENT OPERATIVES TO REDUCE HARM TO OTHER OPERATIVES AND THEMSELVES.

2. MANAGE THE RISK, AN ON SITE RISK ASSESSMENT & METHOD STATEMENT MUST BE COMPLETED AND AGREED BEFORE WORK BEGINS.

3. CHOOSE THE CORRECT ACCESS EQUIPMENT, STEP LADDERS, HOP-UPS, SCAFFOLD OR MOBILE ELEVATING WORK PLATFORM.

WARNING – HOT WORK

WHEN WELDING, SOLDERING & FUSION WELDING IS TAKING PLACE BE AWARE OF THE FOLLOWING:

DO YOU HAVE A VALID PERMIT?

ARE THERE ANY COMBUSTIBLE MATERIALS / SURFACES NEAR BY, IS THERE ADEQUATE VENTILATION TO CARRY OUT THE WORK?

BE AWARE OF BURNS TO THE BODY / BUILDING FABRIC.

WARNING – BURIED SERVICES

BEFORE YOU EXCAVATE, MAKE SURE THERE ARE NO SERVICES IN THE AREA SUCH AS WATER PIPES, SEWAGE PIPES, BURIED CABLES, CHECK EXISTING DRAWINGS FOR THE SERVICES BURIED UNDERGROUND AND CONTACT THE APPROPRIATE SERVICE BEFORE ANY EXCAVATION WORK BEGINS. IF THE EXTENT OF SERVICES IS UNKNOWN.

WARNING – OPENINGS IN THE FLOOR & STRUCTURES

WHEN ON SITE BE AWARE OF OPENINGS IN THE FLOOR OR IN STRUCTURES IN THE FOLLOWING AREAS: LIFT SHAFTS, LOY SMOKE CHIMNEYS, ROOF DRAINAGE, ROOF FALLS, ELECTRICAL SWITCH ROOM, GROUND FLOOR WINDOWS, WINDOWS, OPENINGS FOR DOORS & WINDOWS, ETC.

WARNING – SITE VEHICLES

WHILE MOVING AROUND SITE, BE AWARE OF SITE TRAFFIC SUCH AS LORRIES, CRANES, TELE-HANDLERS AND DUMPER TRUCKS AS THESE CAN INJURE / CRASH OPERATIVES.

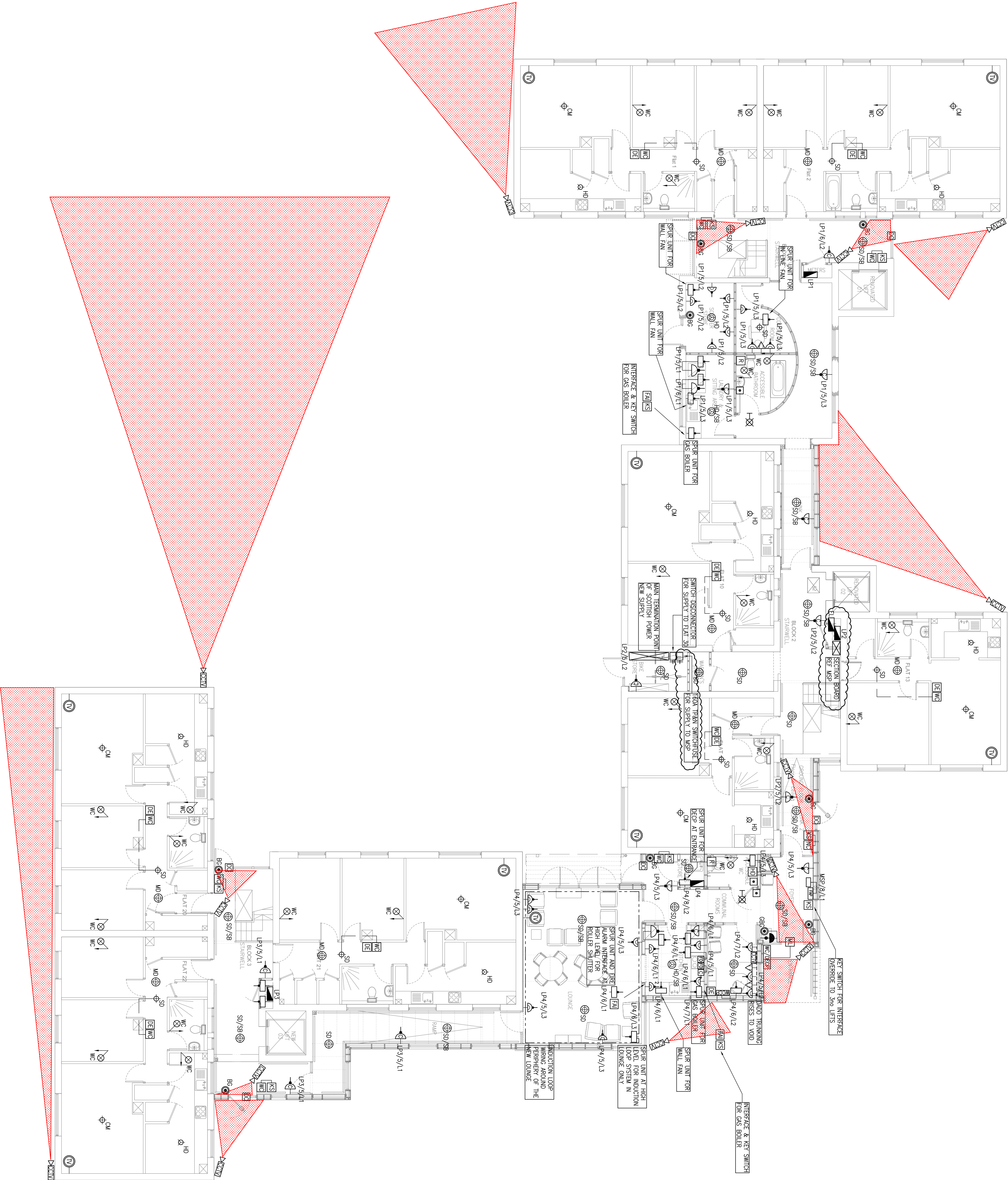
Residual Hazard

Residual Hazard

Residual Hazard

Residual Hazard

Residual Hazard



Please note all coverage is indicative as lens to be utilised are varifocal,

THIS DRAWING IS THE PROPERTY OF MERCURY CONSULTING ENGINEERS LTD. NO PART OF THIS DRAWING OR ANY INFORMATION CONTAINED HEREIN IS TO BE REPRODUCED OR TRANSMITTED IN ANY FORM OR BY ANY MEANS, WITHOUT PERMISSION IN WRITING FROM MERCURY CONSULTING ENGINEERS LTD. DO NOT SCALE FROM THIS DRAWING IF IN ANY DOUBT ASK.

Legend

- TVM SOCKET OUTLET
- SINGLE SOCKET OUTLET
- CLEANERS SOCKET (KEY CONTROLLED)
- TVM R45 DATA/VOICE OUTLET
- SWITCHED FIRED CONNECTION UNIT
- TV AERIAL OUTLET c/* MOUNTING BOX
- FLEX OUTLET
- COOKER ISOLATOR
- WARDEN CALL KEY OVERRIDE SWITCH
- WARDEN CALL WALL MOUNTED CALL POINT
- WARDEN CALL CEILING MOUNTED PULL CORO SWITCH
- WARDEN CALL OVERDOOR INDICATOR LIGHT
- WARDEN CALL RESET BUTTON
- DOOR CONTACT
- DOOR ENTRY SYSTEM GREEN BREAK GLASS UNIT
- DOOR ENTRY SYSTEM MUSHROOM 'PUSH TO EXIT'
- HAND DRYER
- DOOR ENTRY CONTROL PANEL
- CCV MONITORING/RECORDING EQUIPMENT
- WARDEN CALL MASTER CONTROL PANEL
- CCV CAMERA
- FIRE ALARM SYSTEM REMOTE INDICATOR
- 220V SMOKE DETECTOR
- FIRE ALARM SYSTEM SMOKE DETECTOR (SB = SOUNDER BASE, CV = CEILING VOID)
- C02 DETECTOR
- FIRE ALARM SYSTEM HEAT DETECTOR
- 220V HEAT DETECTOR
- FIRE ALARM SYSTEM MULTI-HEAD DETECTOR
- FIRE ALARM INTERFACE
- FIRE ALARM SYSTEM CONTROL PANEL - SYSTEM WIRED IN 1.5mm FT220 CABLES
- FIRE ALARM SYSTEM XENON
- DISTRIBUTION BOARD/CONSUMER UNIT
- MAIN SWITCHBOARD/SWITCHPANEL

REVISION	DESCRIPTION	DATE	INITIALS
C6	IP6 & ELI boards moved to IP21 location	Oct 15	M.C.
C5	57 panel moved interface added for boiler. Key switch override added to detector at floor. Switch disconnect identified	Sept 15	T.C.
C4	Fire alarm detectors added to this	Sept 15	T.C.
C3	Spur unit and fire alarm interface added for kitchen heater	Sept 15	T.C.
C2	Fire alarm wires added to do wc at entrance area	Sept 15	T.C.
C1	Multiple detectors changed to same data from middle	Sept 15	T.C.
P1	Construction blue with Amendments	Sept 15	T.C.
P1	Issued for comment/approval	July 15	T.C.

Mercury
Consulting Engineers Ltd
32C Chestnut Grove
Warrington
L15 8HS
Tel: 0151 734 2006
www.mercuryconsult.co.uk

PROJECT
Shalcross Court
Breckfield Road South,
Everton, Liverpool
L6 2VH

DRAWING TITLE
Proposed CCTV coverage

STATUS	CONSTRUCTION
DESIGNED BY	M.C.
CHECKED BY	H.L.
DATE	July 15
DRAWING NUMBER	M1552-E-200
REVISION	C6