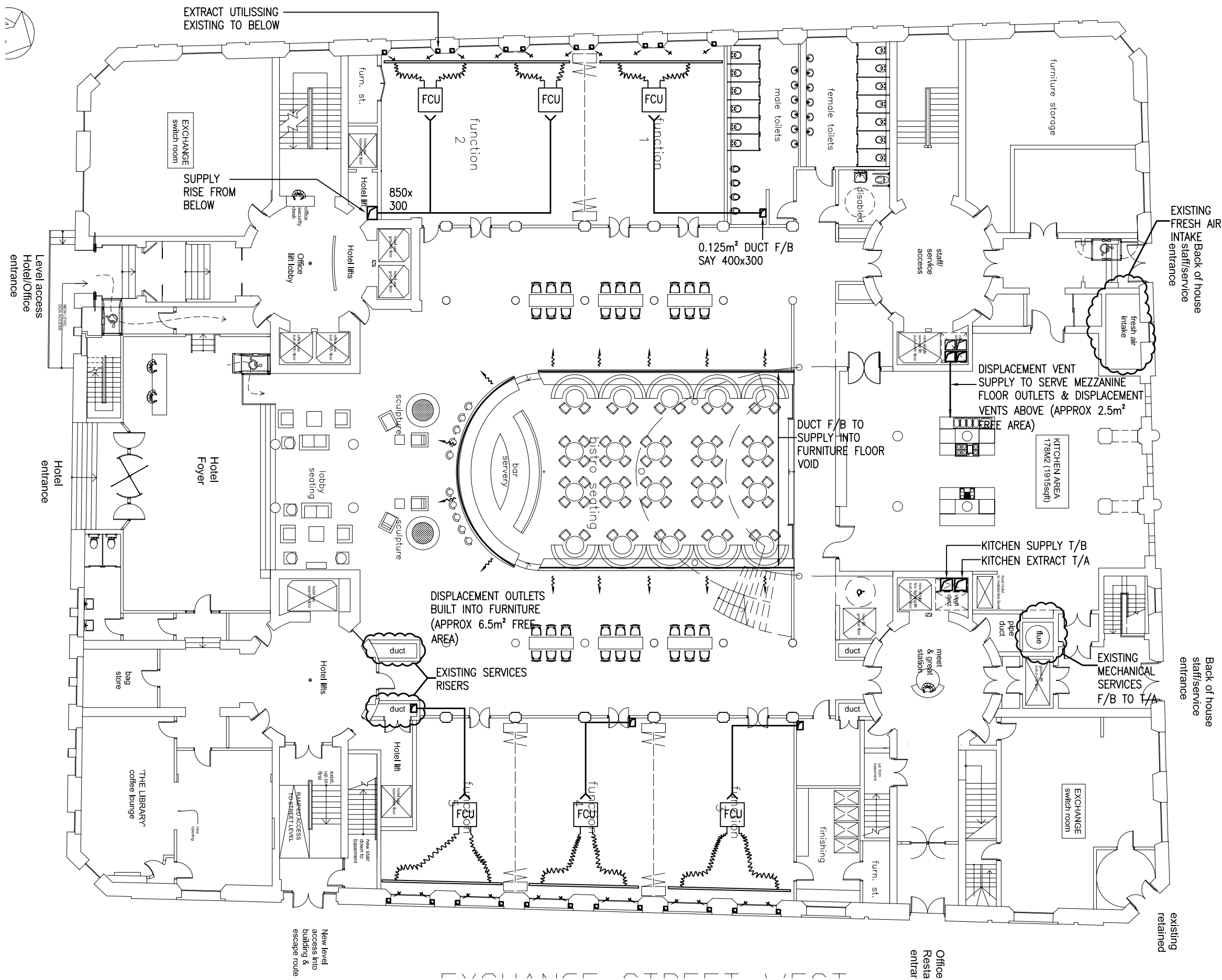


RUMFORD STREET



NOTES.

LEGEND.

P1	PRELIMINARY ISSUE. FOR COMMENT		
Rev	Date	Description	Chkd

HFM Consulting Engineers

1st Floor,
Courtlets House,
38 King Street West,
Manchester
M3 2WZ

Tel: 0161 833 1410
Fax: 0161 833 1412

Also At:

Second Floor, Century Buildings, 31, North John Street, Liverpool. L2 6RG
Tel: 0151 255 2700 Fax: 0151 255 2701

Project

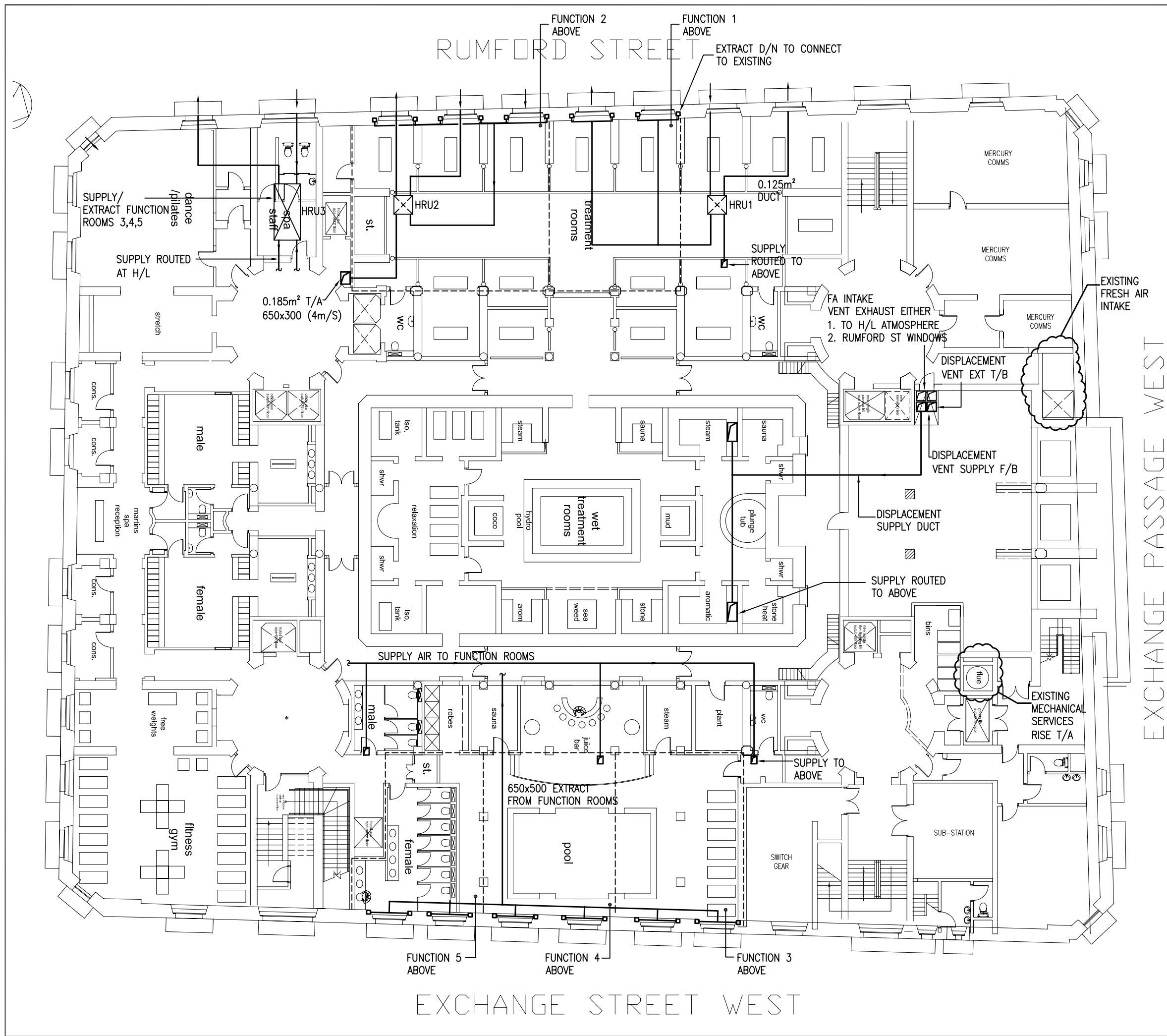
MARTINS BANK BUILDING
LIVERPOOL

Title

INDICATIVE PROPOSED
VENTILATION STRATEGY
PROPOSED GROUND FLOOR

Engineer	RG	Checked	JH
Job No	L1245	Date	DEC 2009

Drawing No.	Rev.
L /1247/M /SK202	P1
	Scale
	1:200 @A3



NOTES.

LEGEND.

DESIGNATED EXTRACT LIGHTWELL

DESIGNATED SUPPLY LIGHTWELL

HRU1 HEATING RECOVER UNIT

HRU2 HEATING RECOVER UNIT

HRU3 HEATING RECOVER UNIT

P1	PRELIMINARY ISSUE. FOR COMMENT		
Rev	Date	Description	Chkd

HFM Consulting Engineers

1st Floor,
Courtlets House,
38 King Street West,
Manchester
M3 2WZ

Tel: 0161 833 1410
Fax: 0161 833 1412

Also At:
Second Floor, Century Buildings, 31, North John Street, Liverpool. L2 6RG
Tel: 0151 255 2700 Fax: 0151 255 2701

Project
MARTINS BANK BUILDING
LIVERPOOL

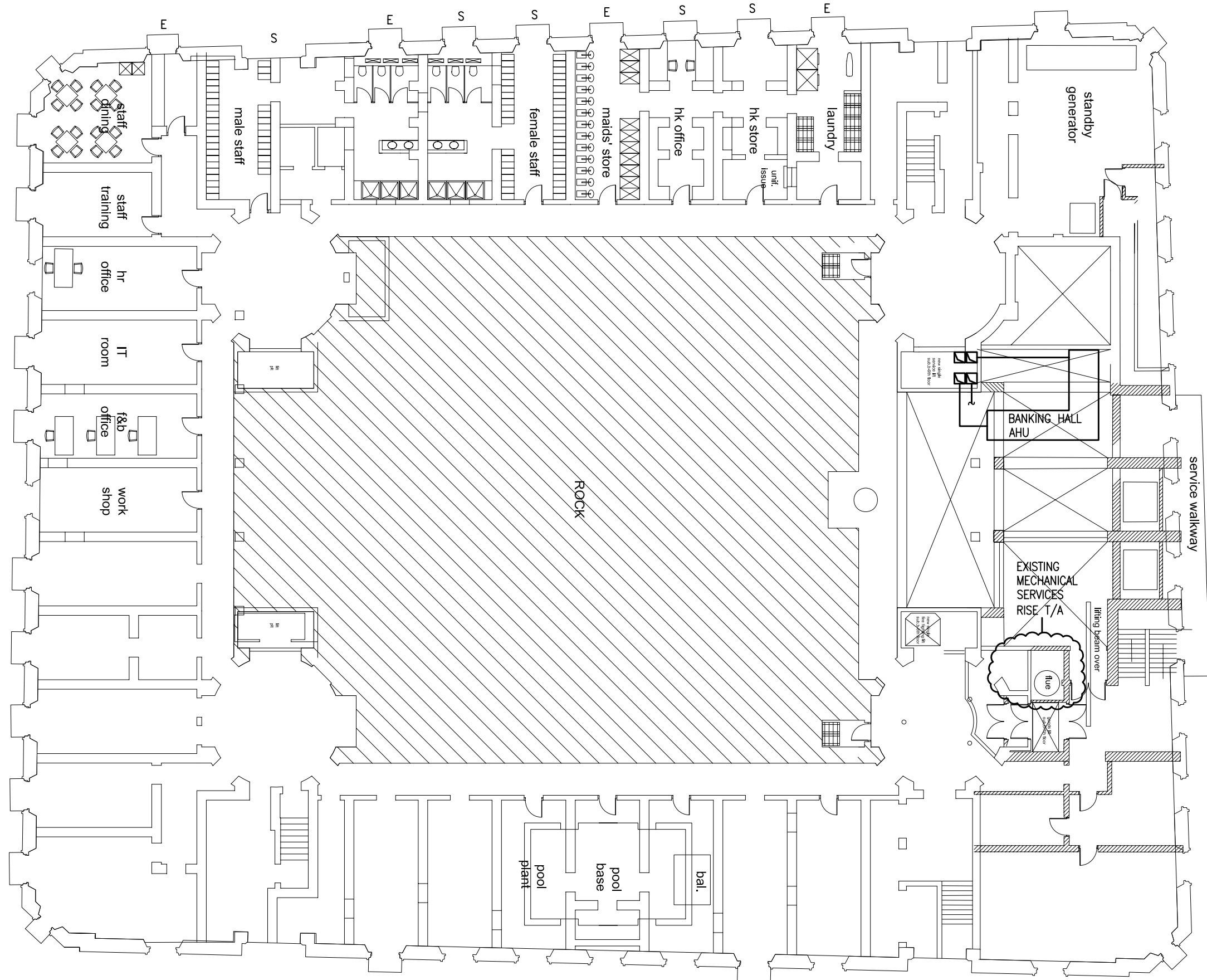
Title
INDICATIVE PROPOSED
VENTILATION STRATEGY
LOWER GROUND LEVEL

Engineer	RG	Checked	JH
Job No	L1245	Date	DEC 2009

Drawing No.	L /1247/M /SK201	Rev.	P1
		Scale	1:200 @A3

M:\L1247 Martins Bank Building\6. Drawings\Mech\L1247-M-SK-200-204-ductwork.dwg

RUMFORD STREET



EXCHANGE STREET WEST

NOTES.

LEGEND.

E = EXTRACT WINDOW
S = SUPPLY WINDOW

P1	PRELIMINARY ISSUE. FOR COMMENT	
Rev	Date	Description
		Chkd

HFM Consulting Engineers

1st Floor,
Courtlets House,
38 King Street West,
Manchester
M3 2WZ

Tel: 0161 833 1410
Fax: 0161 833 1412

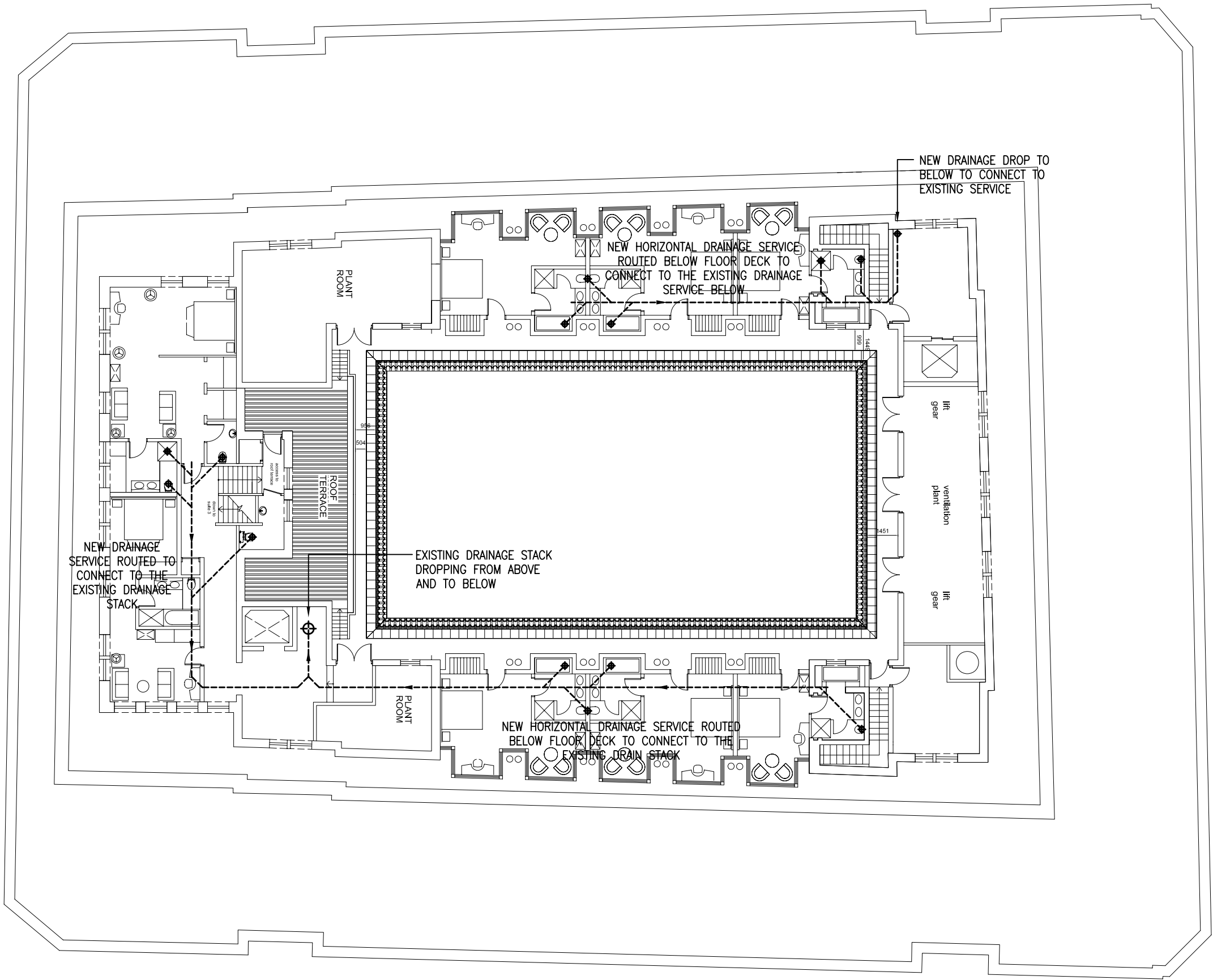


Also At:
Second Floor, Century Buildings, 31, North John Street, Liverpool. L2 6RG
Tel: 0151 255 2700 Fax: 0151 255 2701

Project
**MARTINS BANK BUILDING
LIVERPOOL**

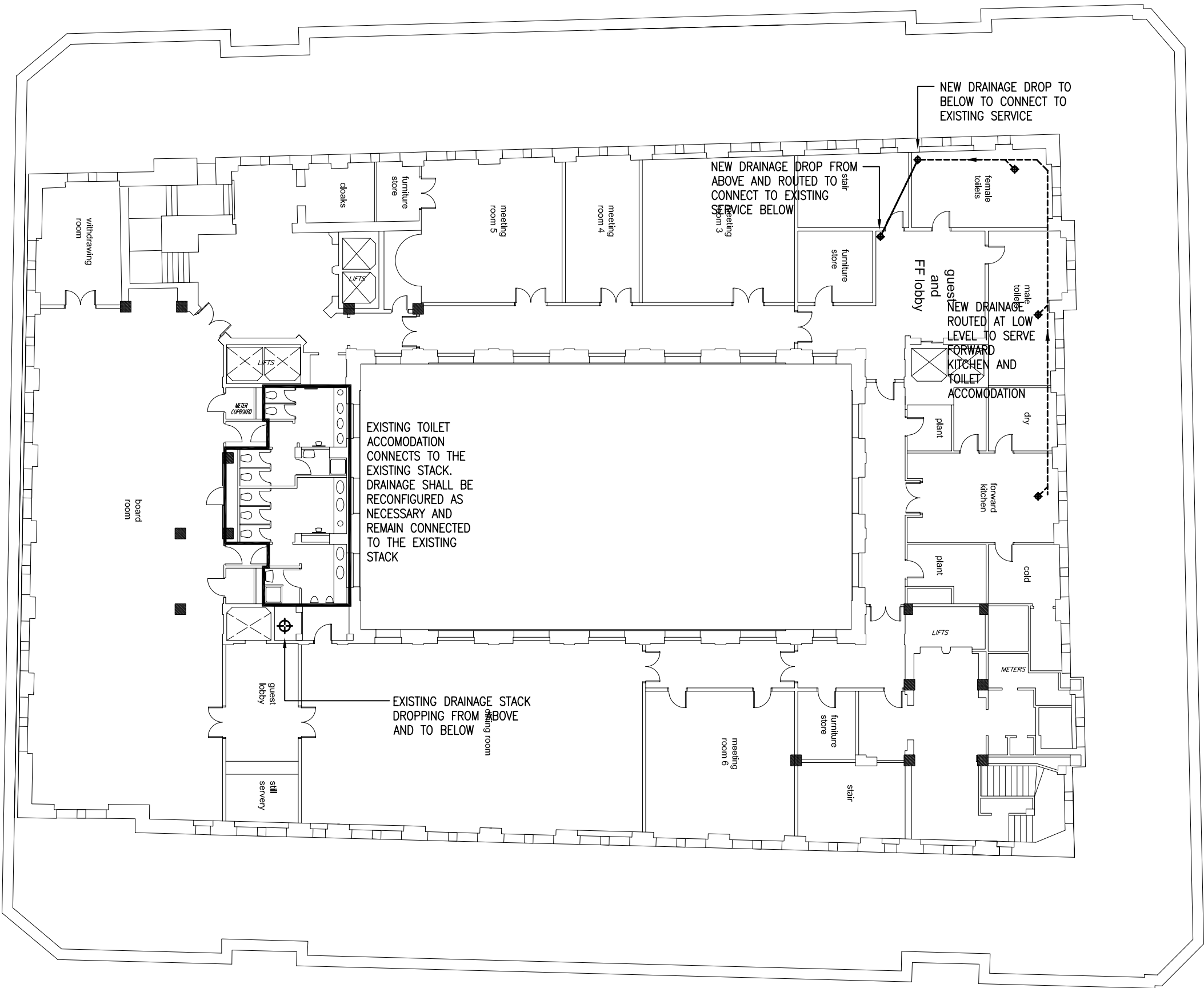
Title
**INDICATIVE PROPOSED
VENTILATION STRATEGY
PROPOSED BASEMENT LEVEL**

Engineer	RG	Checked	JH
Job No	L1245	Date	DEC 2009
Drawing No.	L /1247/M /SK200	Rev.	P1
		Scale	1:200 @A3



NOTES.			
LEGEND.			
P1		PRELIMINARY ISSUE. FOR COMMENT	
Rev	Date	Description	Chkd
HFM Consulting Engineers			
1st Floor, Courtlets House, 38 King Street West, Manchester M3 2WZ			
Tel: 0161 833 1410 Fax: 0161 833 1412			
Also At: Second Floor, Century Buildings, 31, North John Street, Liverpool, L2 6RG Tel: 0151 255 2700 Fax: 0151 255 2701			
Project MARTINS BANK BUILDING LIVERPOOL			
Title INDICATIVE PROPOSED INTERNAL DRAINAGE STRATEGY PROPOSED 9TH FLOOR			
Engineer RG		Checked JH	
Job No L1245		Date DEC 2009	
Drawing No. L /1245/M /SK507			Rev. P1
			Scale 1:200 A3

RUMFORD STREET



EXCHANGE STREET WEST

NOTES.

LEGEND.

P1		PRELIMINARY ISSUE. FOR COMMENT	
Rev	Date	Description	Chkd

HFM Consulting Engineers

1st Floor,
Courtlets House,
38 King Street West,
Manchester
M3 2WZ

Tel: 0161 833 1410
Fax: 0161 833 1412


Also At:
Second Floor, Century Buildings, 31, North John Street, Liverpool. L2 6RG
Tel: 0151 255 2700 Fax: 0151 255 2701

Project
MARTINS BANK BUILDING
LIVERPOOL

Title
INDICATIVE PROPOSED
INTERNAL DRAINAGE STRATEGY
PROPOSED 8TH FLOOR

Engineer	RG	Checked	JH
Job No	L1245	Date	DEC 2009

Drawing No.	L /1245/M /SK506	Rev.	P1
		Scale	1:200



HUGHES & FRANK MALLON

RUMFORD STREET

EXCHANGE STREET WEST

NOTES.

LEGEND.

P1	PRELIMINARY ISSUE. FOR COMMENT		
Rev	Date	Description	Chkd

HFM Consulting Engineers

1st Floor,
Courtlets House,
38 King Street West,
Manchester
M3 2WZ

Tel: 0161 833 1410
Fax: 0161 833 1412

Also At:

Second Floor, Century Buildings, 31, North John Street, Liverpool, L2 6RG
Tel: 0151 255 2700 Fax: 0151 255 2701

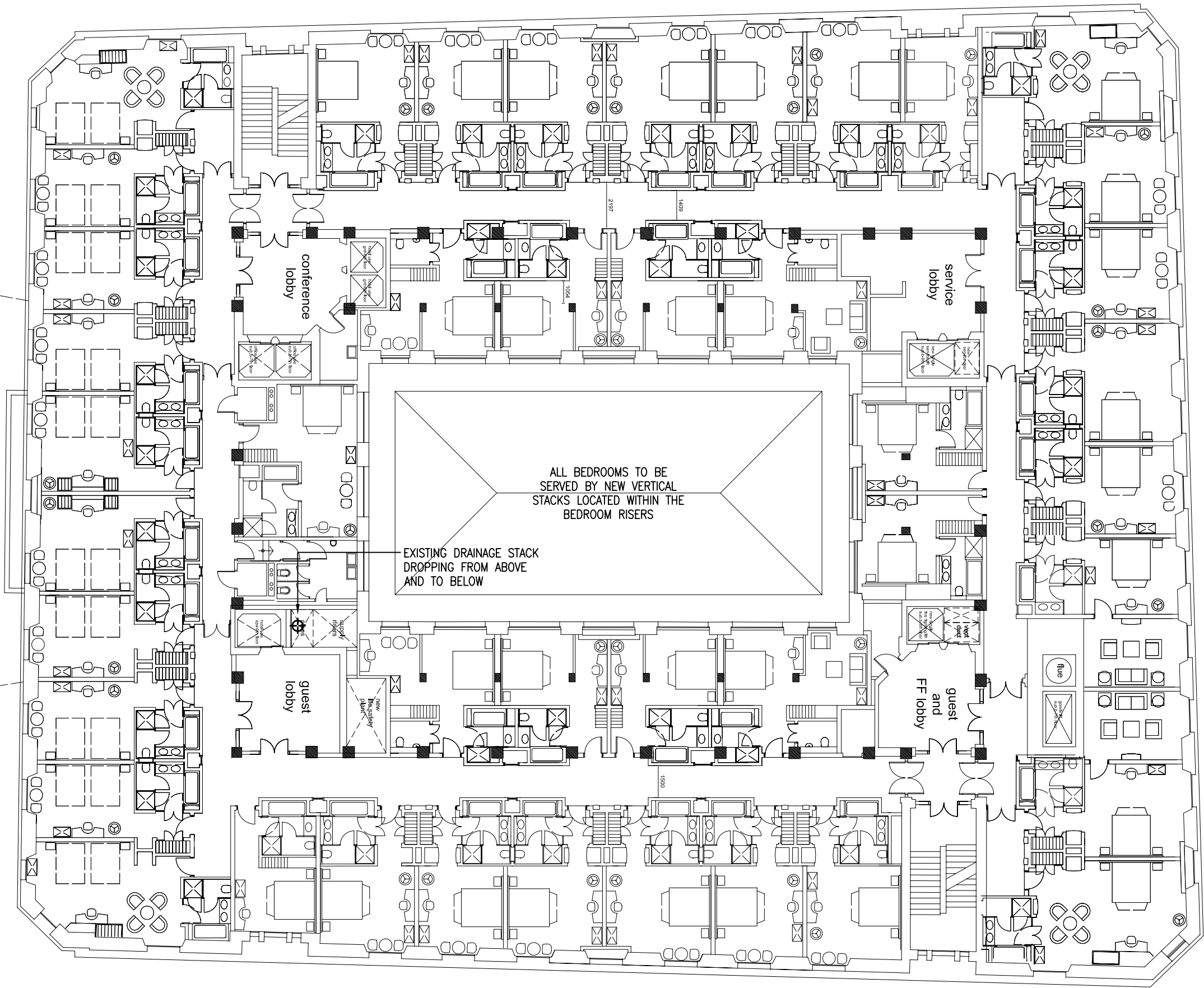
Project

MARTINS BANK BUILDING
LIVERPOOL

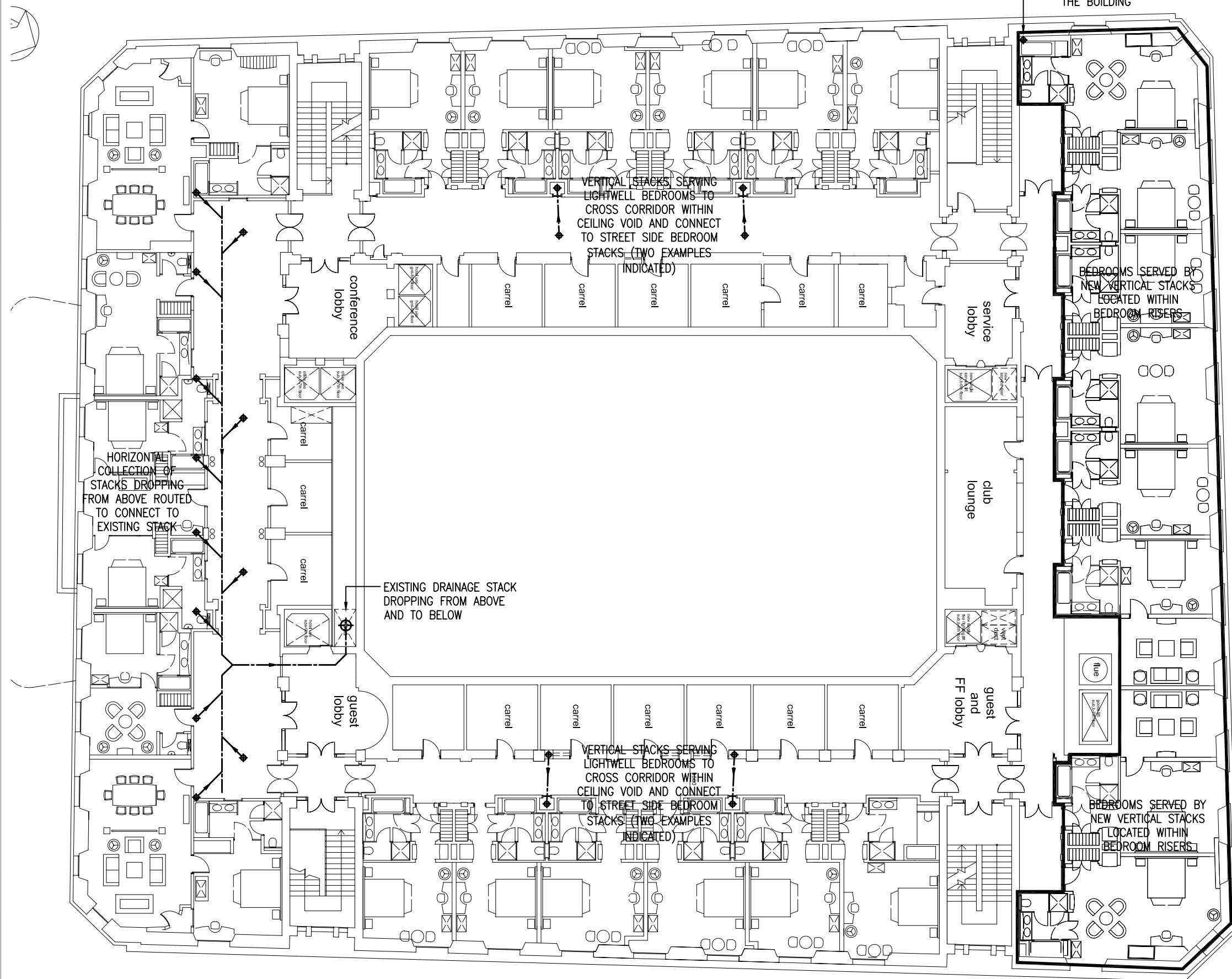
Title

INDICATIVE PROPOSED
INTERNAL DRAINAGE STRATEGY
PROPOSED 2ND AND 3RD FLOORS

Engineer	RG	Checked	JH
Job No	L1245	Date	DEC 09
Drawing No.		Rev.	P1
L /1245/M /SK505		Scale	1:200 A3



RUMFORD STREET



EXCHANGE STREET WEST

NOTES.

LEGEND.

P1	PRELIMINARY ISSUE. FOR COMMENT	
Rev	Date	Description
		Chkd

HFM Consulting Engineers

1st Floor,
Courtlets House,
38 King Street West,
Manchester
M3 2WZ

Tel: 0161 833 1410
Fax: 0161 833 1412



Also At:
Second Floor, Century Buildings, 31, North John Street, Liverpool, L2 6RG
Tel: 0151 255 2700 Fax: 0151 255 2701

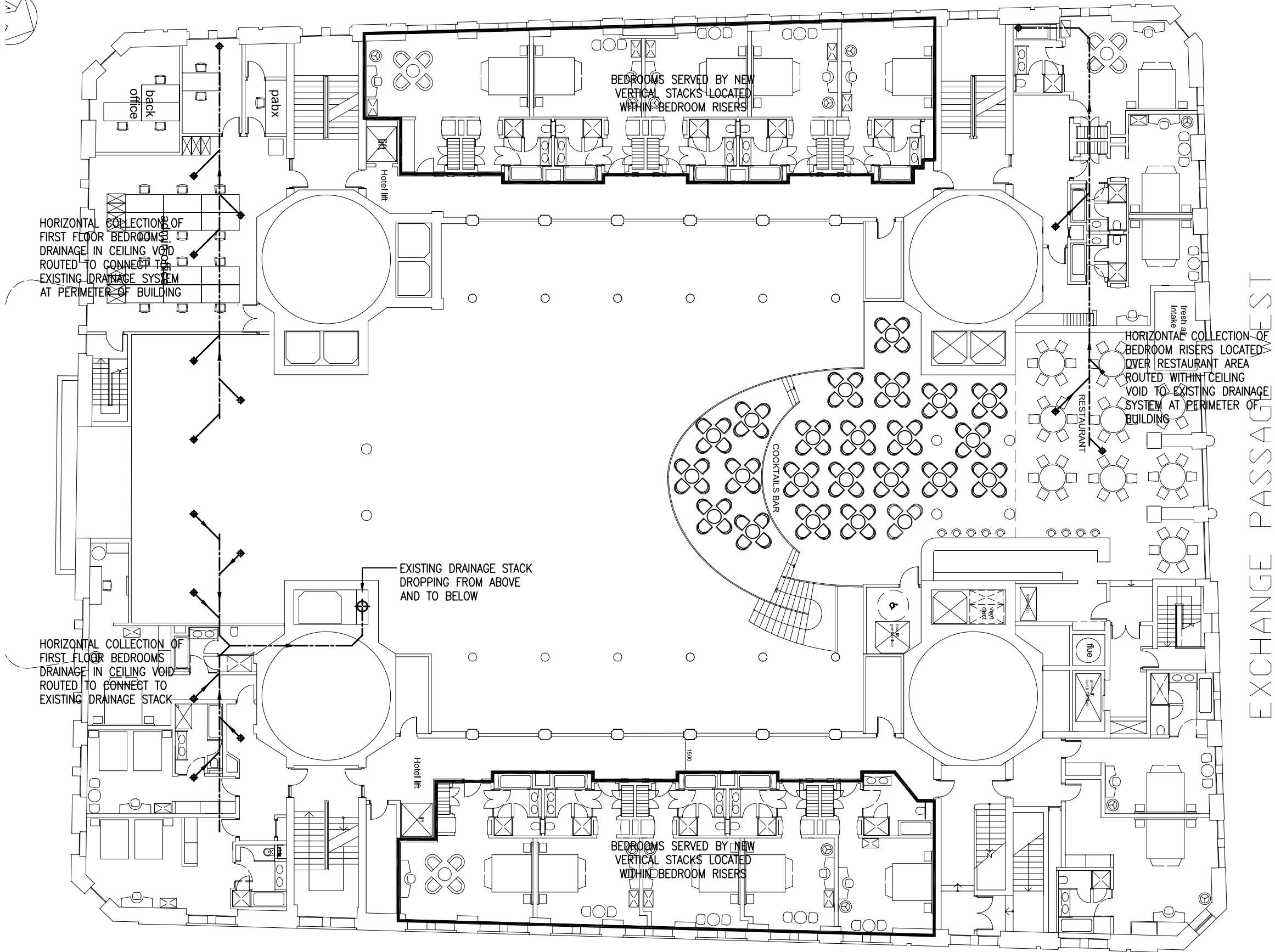
Project
MARTINS BANK BUILDING
LIVERPOOL

Title
INDICATIVE PROPOSED
INTERNAL DRAINAGE STRATEGY
PROPOSED 1ST FLOOR

Engineer	RG	Checked	JH
Job No	L1245	Date	DEC 2009

Drawing No.	Rev.
L /1245/M /SK504	P1
Scale	1:200

RUMFORD STREET



EXCHANGE STREET WEST

NOTES.

LEGEND.

P1 PRELIMINARY ISSUE. FOR COMMENT

Rev	Date	Description	Chkd
-----	------	-------------	------

HFM Consulting Engineers

1st Floor,
Courtlets House,
38 King Street West,
Manchester
M3 2WZ

Tel: 0161 833 1410
Fax: 0161 833 1412



Also At:
Second Floor, Century Buildings, 31, North John Street, Liverpool, L2 6RG
Tel: 0151 255 2700 Fax: 0151 255 2701

Project
MARTINS BANK BUILDING
LIVERPOOL

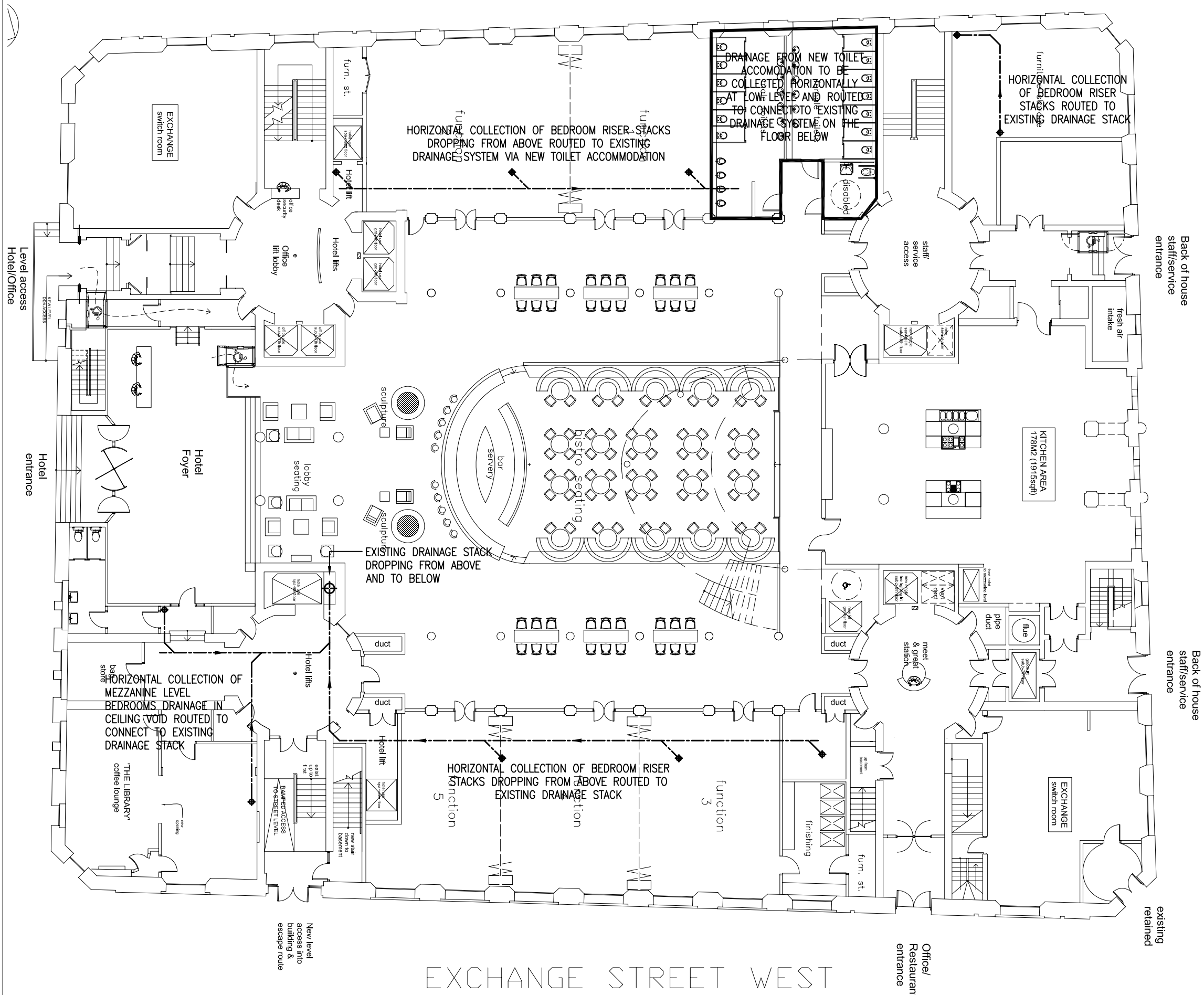
Title
INDICATIVE PROPOSED
INTERNAL DRAINAGE STRATEGY
PROPOSED MEZZANINE FLOOR

Engineer	RG	Checked	JH
----------	----	---------	----

Job No	L1245	Date	DEC 2009
--------	-------	------	----------

Drawing No.	L /1245/M /SK503	Rev.	P1
		Scale	1:200 @A3

RUMFORD STREET



EXCHANGE STREET WEST

NOTES.

LEGEND.

P1 PRELIMINARY ISSUE. FOR COMMENT

Rev Date Description Chkd

HFM Consulting Engineers

1st Floor,
Courtlets House,
38 King Street West,
Manchester
M3 2WZ

Tel: 0161 833 1410
Fax: 0161 833 1412



Also At:
Second Floor, Century Buildings, 31, North John Street, Liverpool, L2 6RG
Tel: 0151 255 2700 Fax: 0151 255 2701

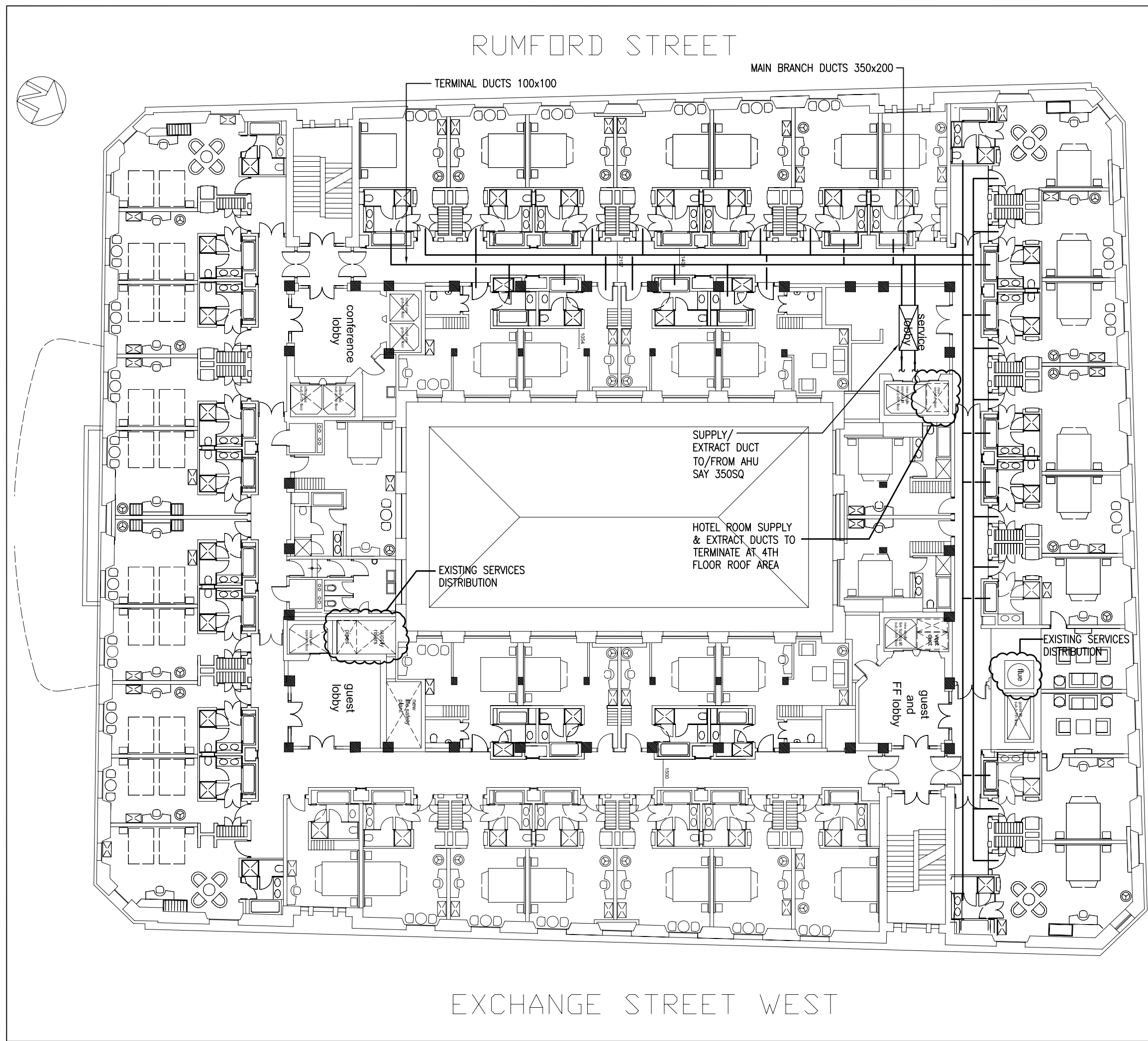
Project
MARTINS BANK BUILDING
LIVERPOOL

Title
INDICATIVE PROPOSED
INTERNAL DRAINAGE STRATEGY
PROPOSED GROUND FLOOR

Engineer RG Checked JH

Job No L1245 Date DEC 2009

Drawing No. L /1245/M /SK502 Rev. P1 Scale 1:200 0A3



NOTES.

LEGEND.

P1	PRELIMINARY ISSUE. FOR COMMENT		
Rev	Date	Description	Chkd

HFM Consulting Engineers

1st Floor,
Courtlets House,
38 King Street West,
Manchester
M3 2WZ

Tel: 0161 833 1410
Fax: 0161 833 1412

Also At:
Second Floor, Century Buildings, 31, North John Street, Liverpool. L2 6RG
Tel: 0151 255 2700 Fax: 0151 255 2701

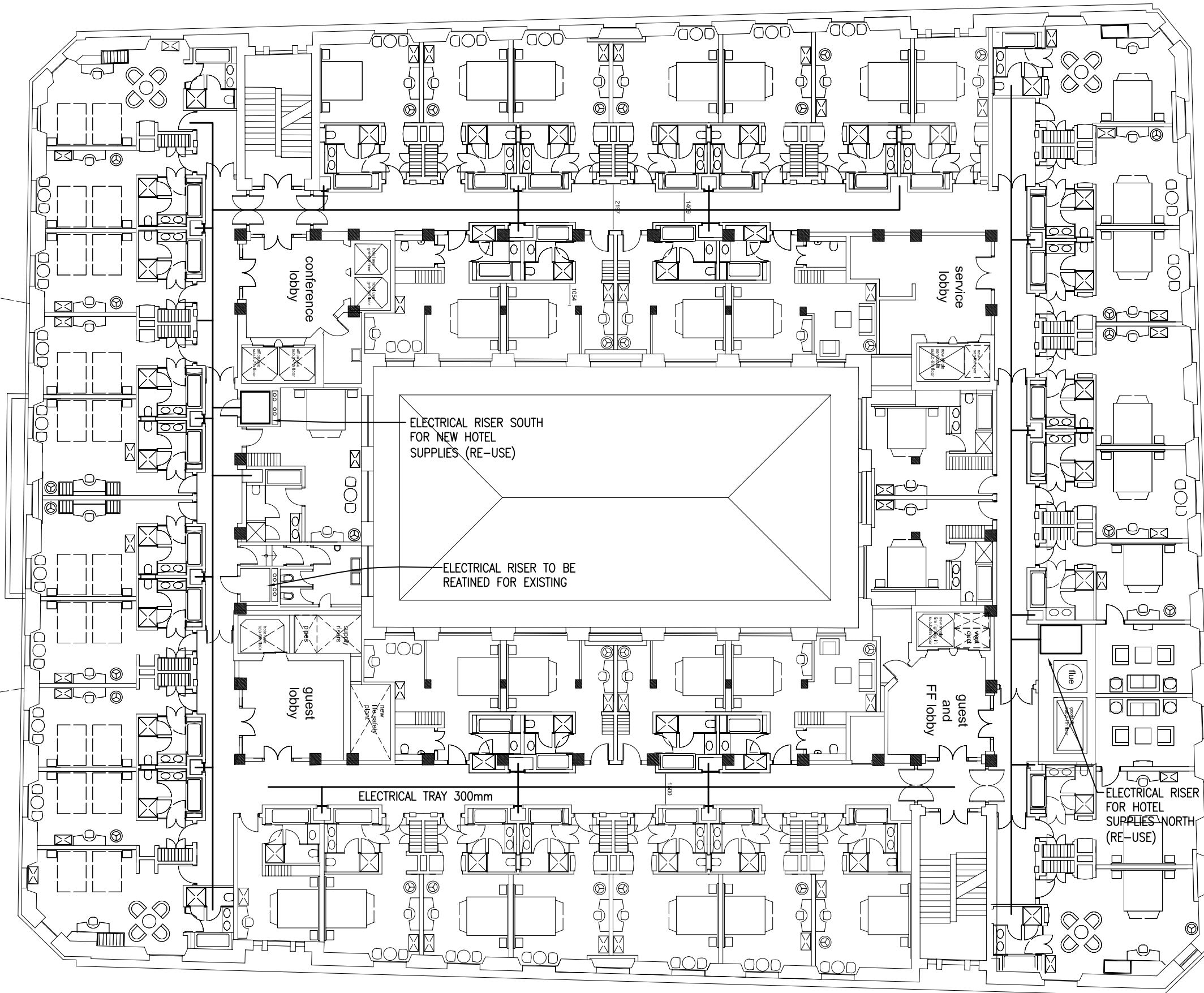
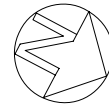
Project
MARTINS BANK BUILDING
LIVERPOOL

Title
INDICATIVE PROPOSED
VENTILATION STRATEGY
PROPOSED BEDROOM LEVELS

Engineer RG	Checked JH
Job No L1245	Date DEC 2009

Drawing No. L /1245/M /SK204	Rev. P1
	Scale 1:200 @A3

RUMFORD STREET



NOTES.

LEGEND.

P1	PRELIMINARY ISSUE. FOR COMMENT	
Rev	Date	Description
		Chkd

HFM Consulting Engineers

1st Floor,
Courtlets House,
38 King Street West,
Manchester
M3 2WZ

Tel: 0161 833 1410
Fax: 0161 833 1412



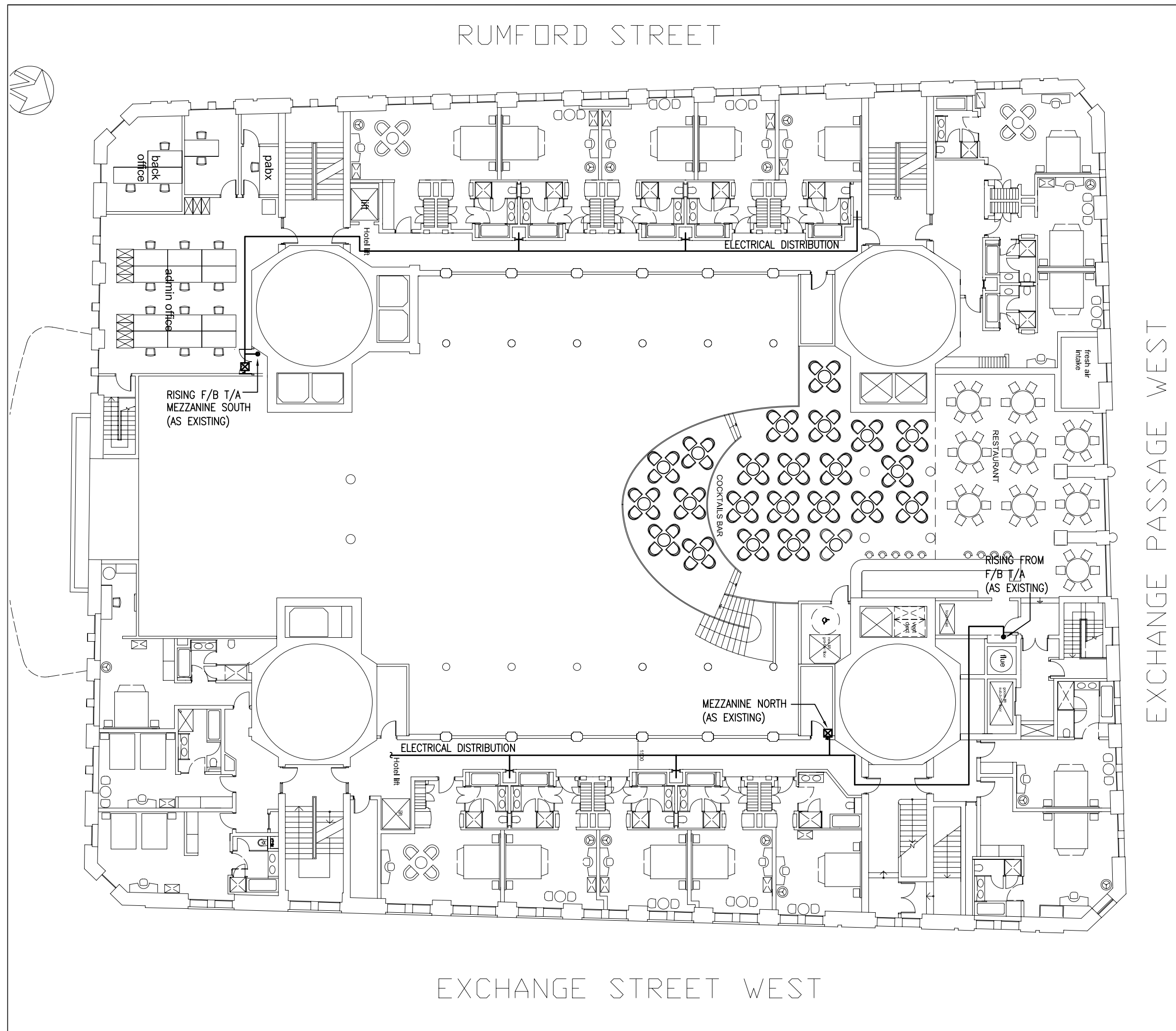
Also At:
Second Floor, Century Buildings, 31, North John Street, Liverpool. L2 6RG
Tel: 0151 255 2700 Fax: 0151 255 2701


Project
MARTINS BANK BUILDING
LIVERPOOL

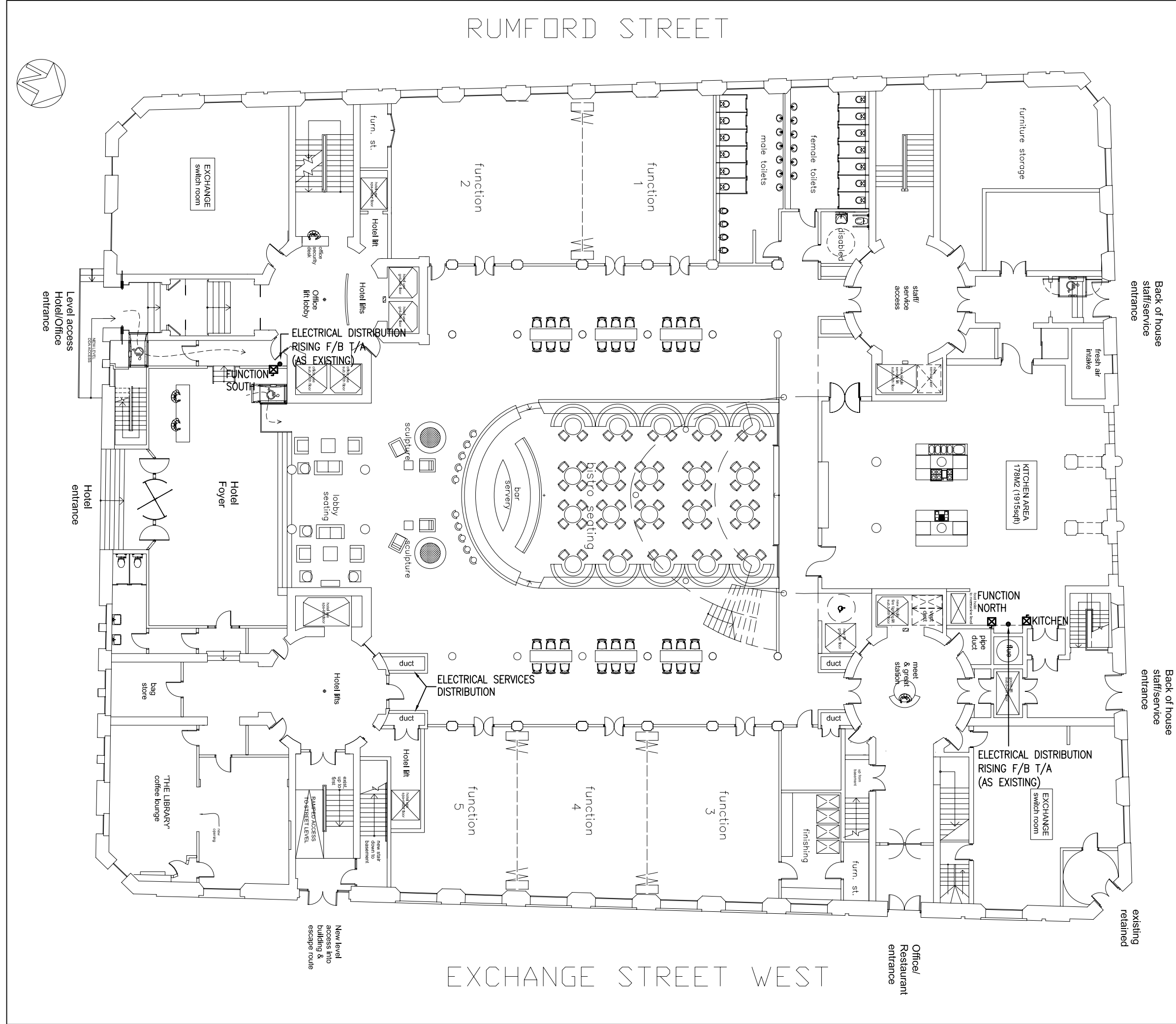
Title
SECOND FLOOR INDICATIVE ELECTRICAL LAYOUT

Engineer PH	Checked
Job No L/1247	Date 04.12.09
Drawing No. L /1247/E /205	Rev. p1
	Scale 1:200

0A3



NOTES.			
LEGEND.			
P1		PRELIMINARY ISSUE. FOR COMMENT	
Rev	Date	Description	Chkd
HFM Consulting Engineers 1st Floor, Courtlets House, 38 King Street West, Manchester M3 2WZ Tel: 0161 833 1410 Fax: 0161 833 1412			
			
Also At: Second Floor, Century Buildings, 31, North John Street, Liverpool. L2 6RG Tel: 0151 255 2700 Fax: 0151 255 2701			
Project MARTINS BANK BUILDING LIVERPOOL			
Title MEZZANINE FLOOR INDICATIVE ELECTRICAL LAYOUT			
Engineer PH		Checked	
Job No L/1247		Date 04.12.09	
Drawing No. L /1247/E /203		Rev. p1 Scale 1:200 ©A3	



NOTES.

LEGEND.

P1	PRELIMINARY ISSUE. FOR COMMENT		
Rev	Date	Description	Chkd

HFM Consulting Engineers

1st Floor,
Courtlets House,
38 King Street West,
Manchester
M3 2WZ

Tel: 0161 833 1410
Fax: 0161 833 1412

Also At:

Second Floor, Century Buildings, 31, North John Street, Liverpool. L2 6RG
Tel: 0151 255 2700 Fax: 0151 255 2701

Project

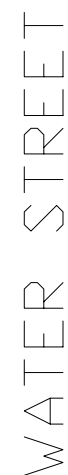
MARTINS BANK BUILDING
LIVERPOOL

Title

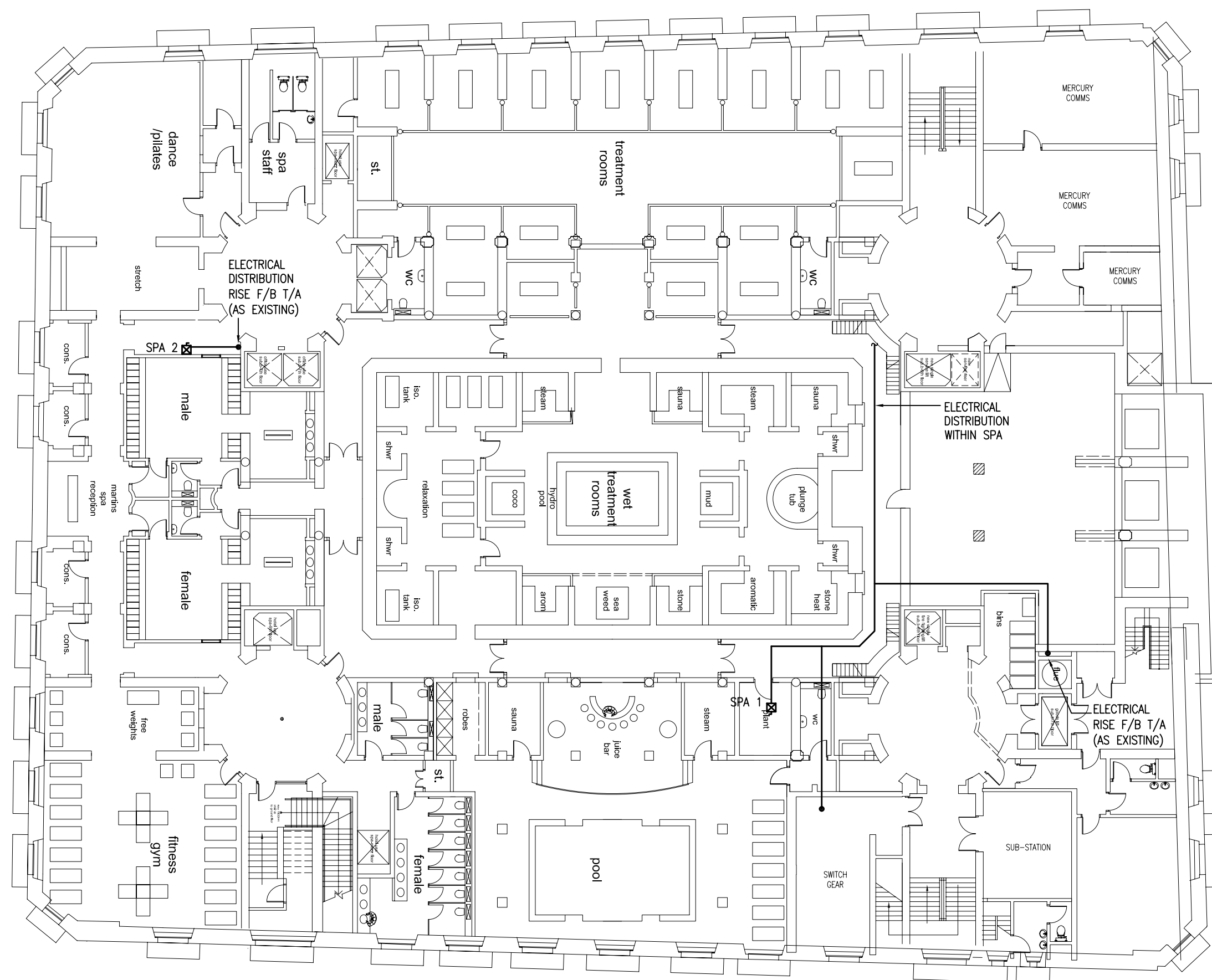
GROUND FLOOR INDICATIVE ELECTRICAL LAYOUT

Engineer	PH	Checked	
Job No	L/1247	Date	04.12.09
Drawing No.	L /1247/E /202		Rev. P1
		Scale	1:200 @A3

M:\L1247 Martins Bank Building\6. Drawings\Elec\L1247-E-201-205 ELEC-POSITIONS-A3.dwg



RUMFORD STREET



EXCHANGE STREET WEST

LEGEND.

HFM Consulting Engineers

Tel: 0161 833 1410
Fax: 0161 833 1412



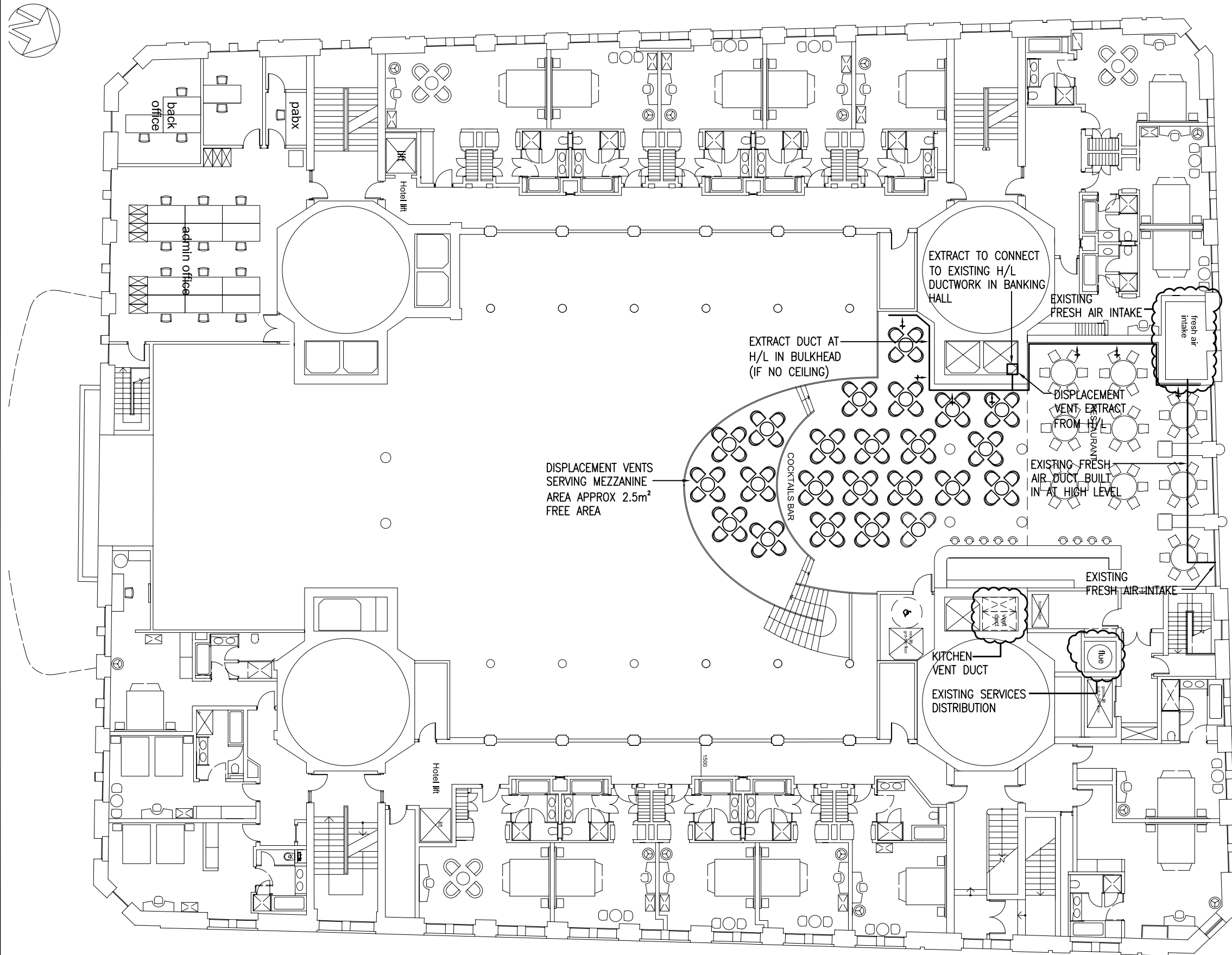
Project	MARTINS BANK BUILDING LIVERPOOL
---------	------------------------------------

Title	LOWER GROUND FLOOR INDICATIVE ELECTRICAL LAYOUT
-------	---

Engineer	PH	Checked	
Job No	L/1247	Date	04.12.09
Drawing No. L /1247/E /201		Rev.	p1
		Scale	1:200 @A

RUMFORD STREET

EXCHANGE STREET WEST



NOTES.

LEGEND.

P1	PRELIMINARY ISSUE. FOR COMMENT		
Rev	Date	Description	Chkd

HFM Consulting Engineers

1st Floor,
Courtlets House,
38 King Street West,
Manchester
M3 2WZ

Tel: 0161 833 1410
Fax: 0161 833 1412



Also At:
Second Floor, Century Buildings, 31, North John Street, Liverpool, L2 6RG
Tel: 0151 255 2700 Fax: 0151 255 2701

Project
**MARTINS BANK BUILDING
LIVERPOOL**

Title
**INDICATIVE PROPOSED
VENTILATION STRATEGY
PROPOSED MEZZANINE LEVEL**

Engineer	RG	Checked	JH
Job No	L1245	Date	DEC 2009
Drawing No. L /1245/M /203		Rev.	p1
		Scale	1:200 @A3

EXCHANGE PASSAGE WEST