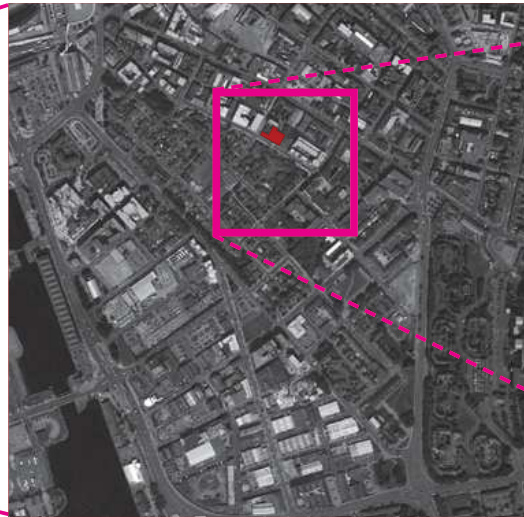


## Site Analysis

### Site Location



Macro



Meso



Micro

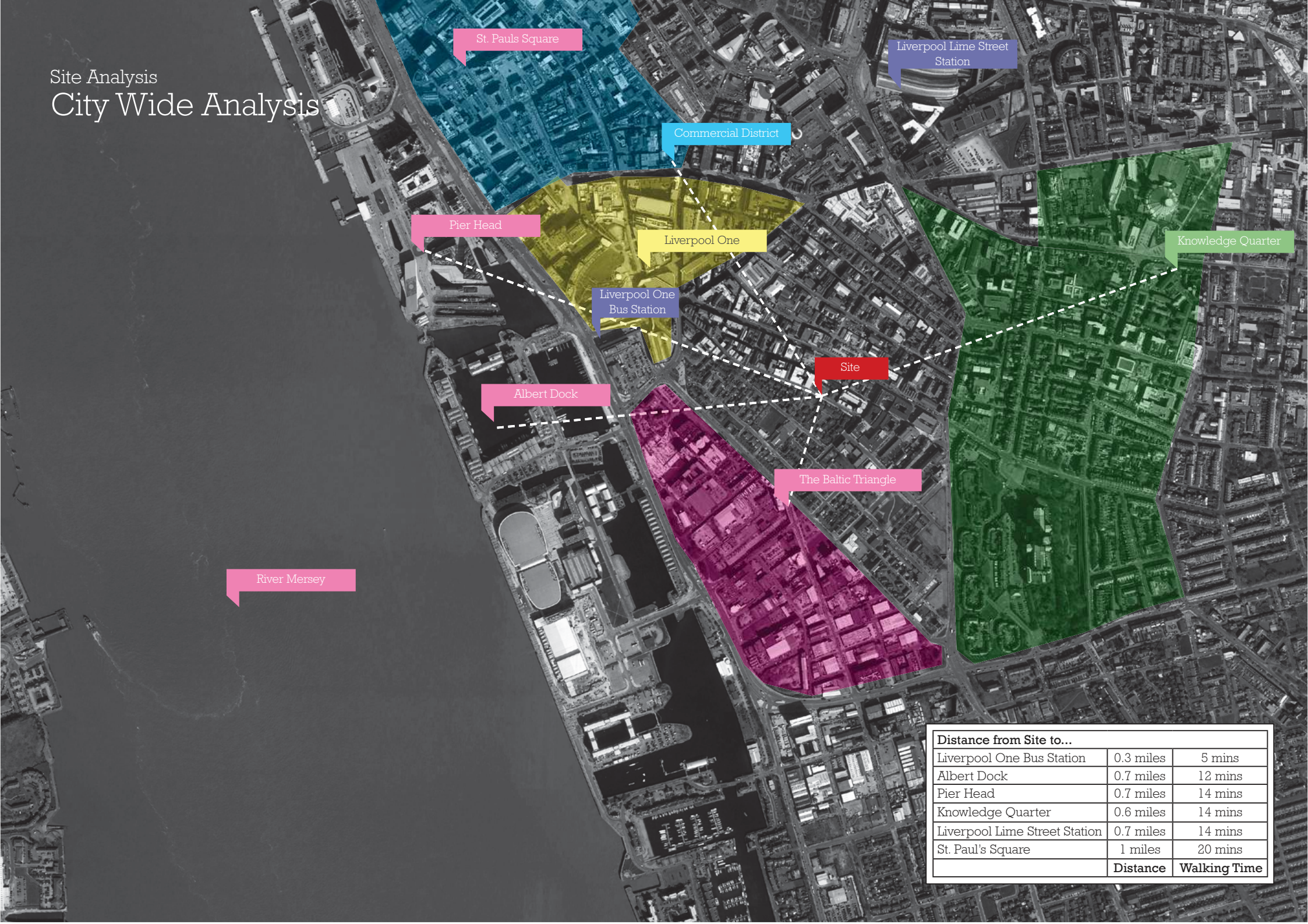
The site is on the edge of the of the Ropewalks area of Liverpool City Centre, with Duke Street to the north and the Baltic Triangle to the south with a 5 minute walk into the centre of Liverpool.

The site is bounded by Lydia Ann Street to the South and Suffolk Street to the West and is within a primarily residential area of the City.



# Site Analysis

## City Wide Analysis



Distance from Site to...		
Liverpool One Bus Station	0.3 miles	5 mins
Albert Dock	0.7 miles	12 mins
Pier Head	0.7 miles	14 mins
Knowledge Quarter	0.6 miles	14 mins
Liverpool Lime Street Station	0.7 miles	14 mins
St. Paul's Square	1 miles	20 mins
	Distance	Walking Time



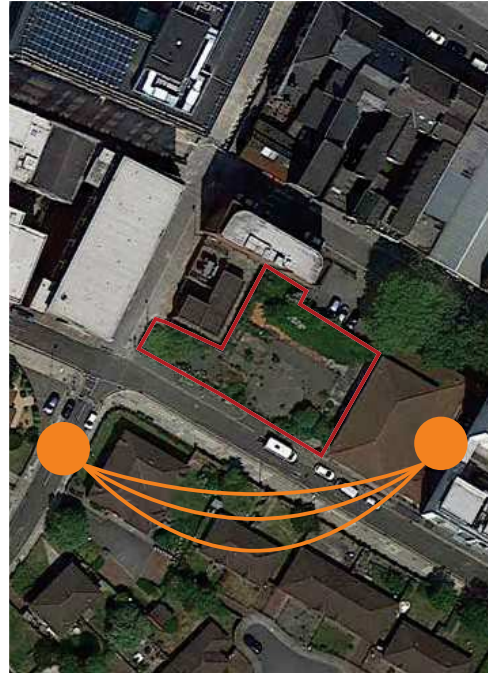
## Site Analysis



The Site

Located in L1, Liverpool, the Lydia Ann Street site sits on the outer edge of the Ropewalks area of the City Centre, between the prominently residential area to the south and the commercial centres of Duke Street and the wider Liverpool One to the north.

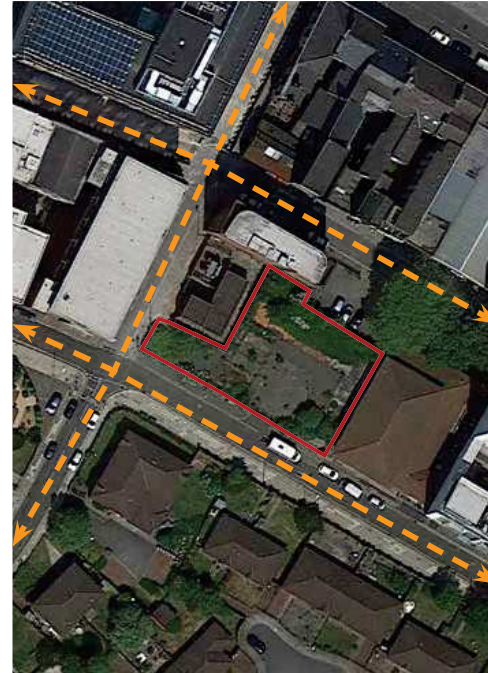
The site is currently vacant.



Sun Path

The site is orientated on a South West axis. The site suffers from minimal overshadowing with the mid rise context of the Lydia Ann Street massing stepping up from the one/ two storey residential developments opposite.

Due to the proximity of the adjacent buildings, The site benefits from open aspects with natural lighting and solar gain being factors which can begin to feed in to the design process, optimising the proposals sustainable credentials.



Key Routes

Vehicular entry to the site was historically to the south forming a surface car park. As the site sits within the grid arrangement of the Ropewalks area, the site has immediate and easy access to the rest of Liverpool City Centre.



Views and Gateways

Due to the sites prominence at the centre of a low/ mid rise residential street, the opportunity for a statement building to fill the space is clear to see stitching into the strong existing street scene.

