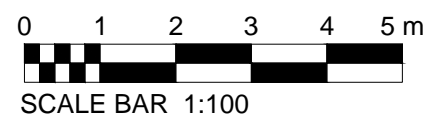
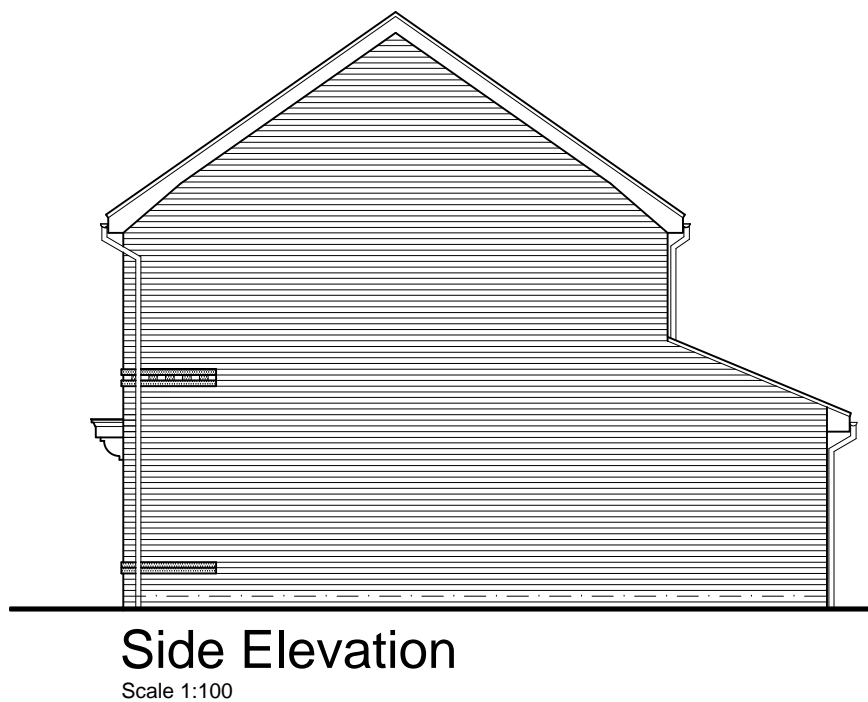
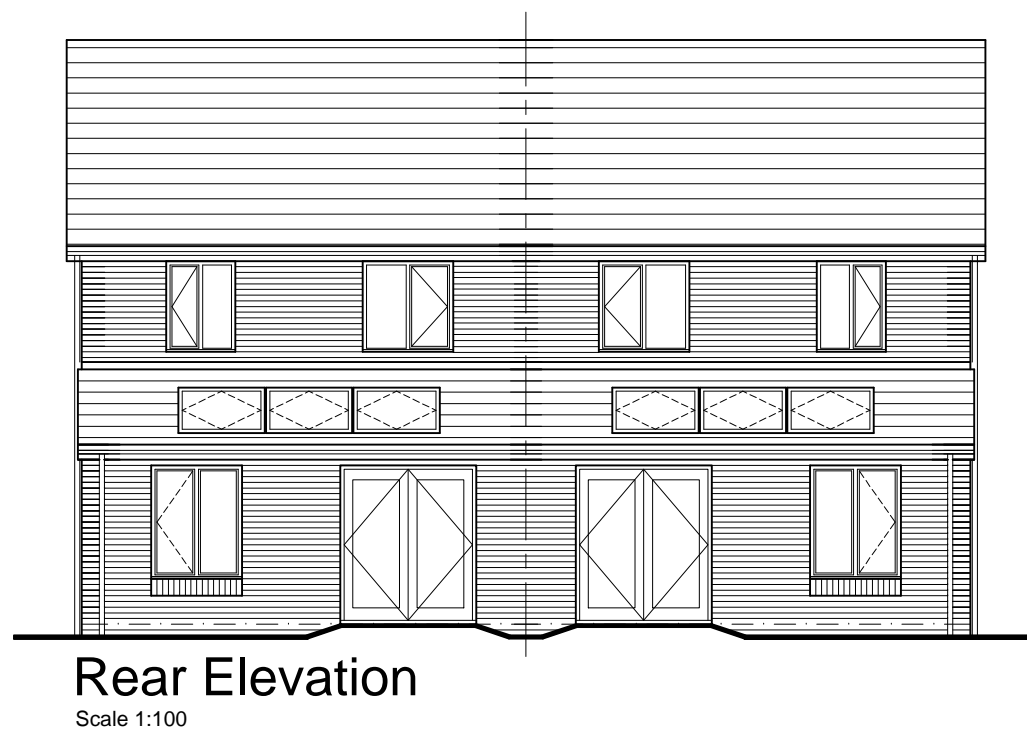




**Front Elevation**  
Scale 1:100



The Longford	
Old Ref :	The Ellesmere
Gross Area :	893 sqft
Ground Floor :	508 sqft
First Floor :	385 sqft
Circulation :	104 sqft
Net to Gross	11 %
All Areas and dimensions are taken to STRUCTURAL FINISH.	



# The Longford (893sqft)

