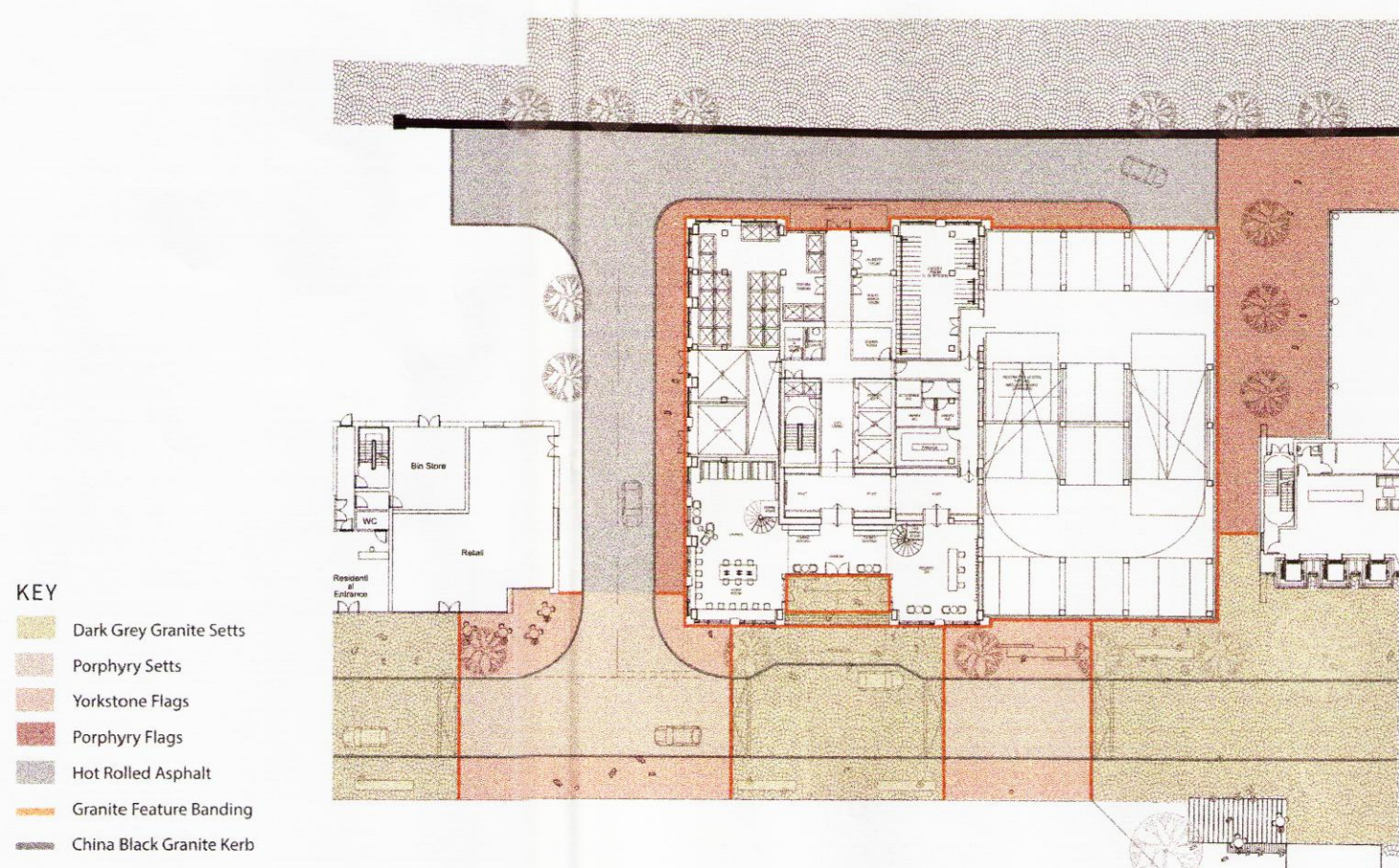


## GROUND FLOOR // MATERIALITY



### 1 Dark Grey Granite Setts

This material is typical for shared surface areas, where smaller units are preferred for both aesthetic and practical reasons.

### 2 Porphyry Setts Blend

This material will be used as a carriageway surface in areas where there will be regular trafficking by heavy vehicles. The strength of the concrete base materials should be determined in response to vehicle loadings.

### 3 Yorkstone Flags

This material is typical for pedestrian areas and is perfectly suited to the existing maritime materiality found along Liverpool Waterfront.

### 4 Porphyry Flags

A very durable material for footpaths and shared surfaces, which is stain resistant and has good slip resistance. It is also a very attractive material, due to its colour variation.

### 5 HRA with Craggion Green Chippings

Hot rolled asphalt (HRA) is a very fine-grained material used on highways, and relies on the presence of chippings of a hard stone to improve durability and to add traction.

### 6 Granite Feature Banding

The proposal is to use granite flags as a tidy dividing line between setts and flags. Banding promotes pedestrian movement and directs people. Banding colour, to be same as adjoining sett trim detail to buildings and to carriageway kerbs.

### 7 China Black Granite Kerb

All kerbs are to be supplied from natural stone. Concrete for foundations, races and haunching to standards.



THIS DRAWING IS COPYRIGHT PROTECTED AND MAY NOT BE REPRODUCED IN WHOLE OR PART WITHOUT WRITTEN AUTHORITY FROM THE OWNER.

#### NOTE:

- Do not scale from this drawing. Always work to noted dimensions.
- All dimensions are in millimetres unless otherwise stated.
- All setting out, levels and dimensions to be agreed on site.
- The dimensions of all materials must be checked on site before being laid out.
- This drawing must be read with the relevant specification clauses and detail drawings.
- Order of construction and setting out to be agreed on site.

#### KEY:

RED LINE BOUNDARY

NOTE: LANDSCAPE PROPOSALS OUTSIDE RED LINE BOUNDARY ARE FOR ILLUSTRATIVE PURPOSES ONLY

16F/1370  
02.06.16

Issue	Date	Status	Drawn	Apprvd.
-------	------	--------	-------	---------

**Planit Intelligent Environments LLP**  
E: info@planit-ie.com W: planit-ie.com  
**MANCHESTER** 2 Back Grafton St Altrincham WA14 1DY T: 0161 928 9281  
**LONDON** 18 Bowling Green Lane London EC1R 0BW T: 0207 253 5678

Client MODA Living

Project Princes Reach

Org Title Landscape GA - Ground Floor

Created on	Created by	Approved by
25/05/16	SS	KR

Scale	Size	Status
1:200	A1	Planning

Org No. PL1575-VW-001-07

Issue 01