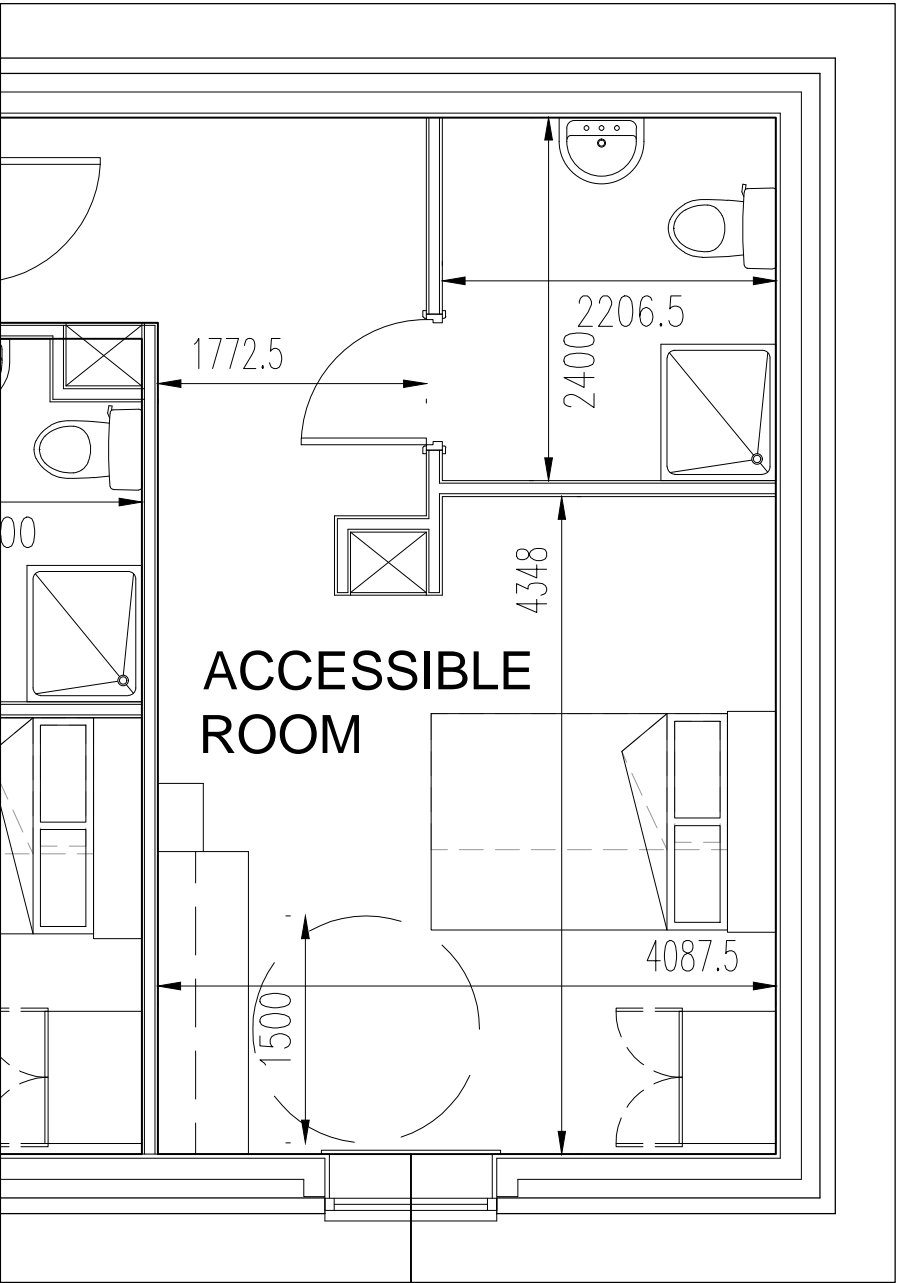


ROOM LAYOUT A (12 No.)



ROOM LAYOUT B (5 No.)



ROOM LAYOUT C (1 No.)



LEACH RHODES WALKER
ARCHITECTS

PHILHARMONIC COURT
LIVERPOOL

ACCESSIBLE ROOM LAYOUTS

Drn By: ADC Auth By: CJG Date: 13.12.12
Drg No: 7163 L(00)64 1:50@A3 Rev: C

LEACH RHODES WALKER
Riverside Manchester M3 5AA
t +44 (0) 161 833 0211 e +44 (0) 161 832 7757
e: info@lrw.co.uk www.lrw.co.uk

File loc: L:\7163 Philharmonic Court\Drawings\Arch\7163-L(00)64 - Accessible Room Layouts - Printed By: Andrew Ocker