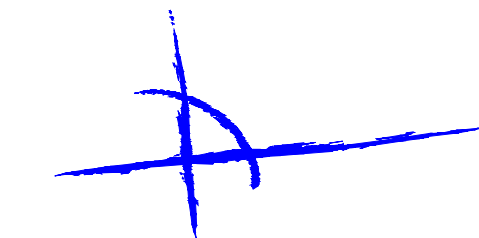
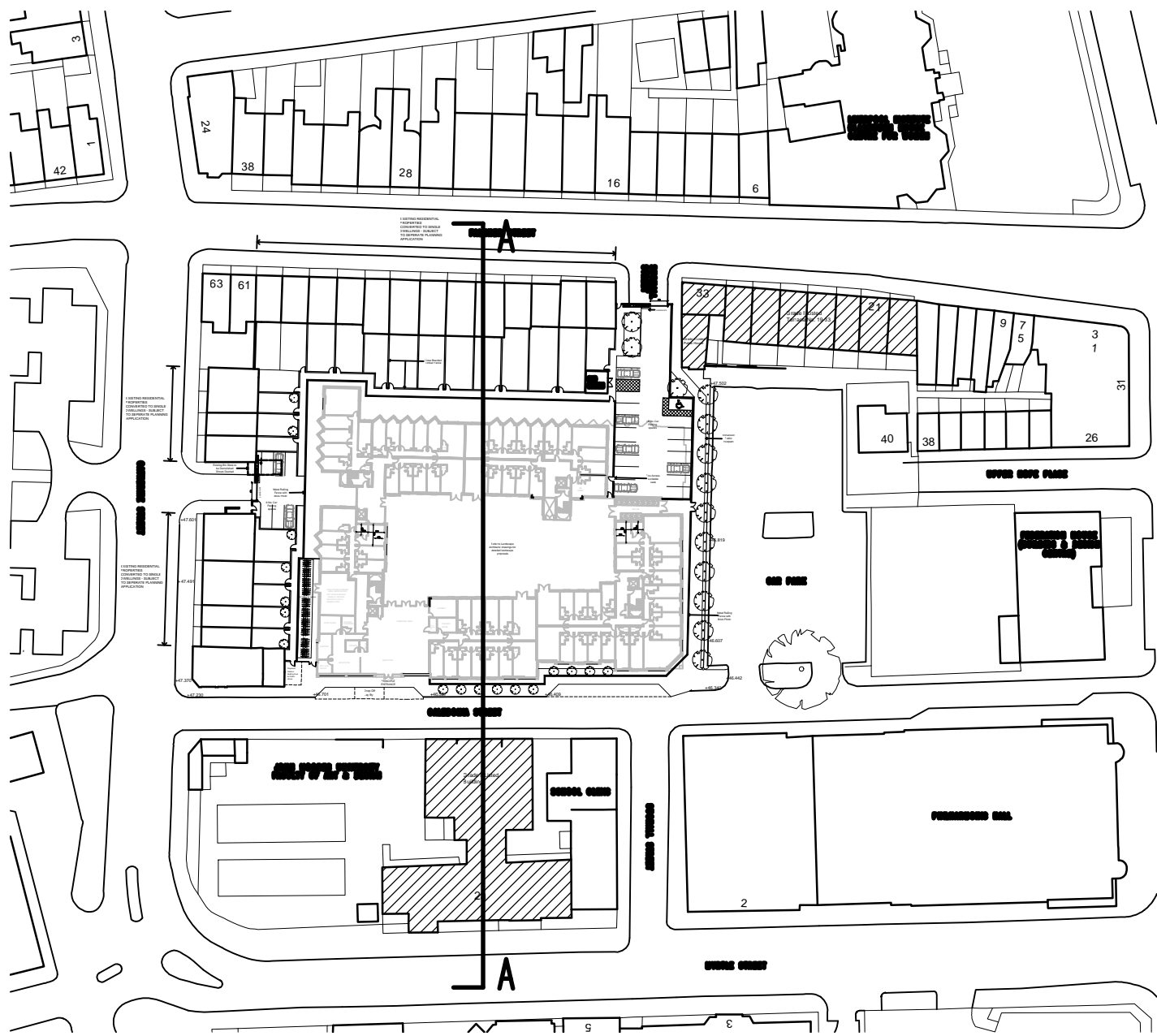




SECTION A-A



LEACH RHODES WALKER  
ARCHITECTS

PHILHARMONIC COURT  
LIVERPOOL

SECTION A-A

Drn By: ADC Auth By: CJG Date: 12.12.12  
Drg No: 7163 L(00)25 1:200@A1 Rev: F

LEACH RHODES WALKER  
Riverside Manchester M3 5AA  
t: +44 (0) 161 833 0211 f: +44 (0) 161 832 7757  
e: info@lrw.co.uk www.lrw.co.uk

File loc: L:\7163 Falkner Street\Drawings\arch\LRW-7163-L(00)25 - Sections Printed By: Andrew Tucker