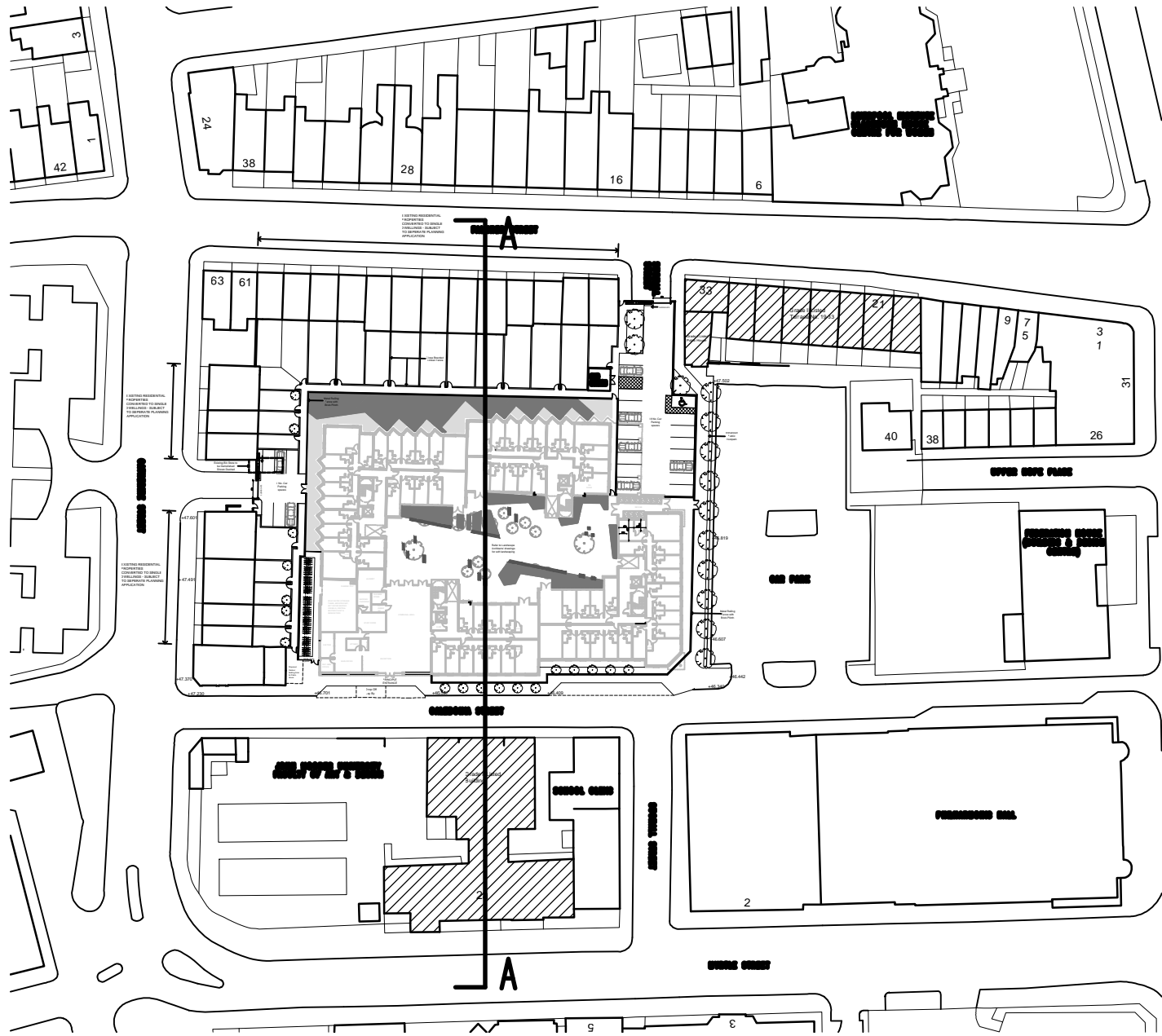


SECTION A-A



LEACH RHODES WALKER
ARCHITECTS

PHILHARMONIC COURT
LIVERPOOL

PROPOSED
SECTION A-A

Drn By: CM Auth By: CJG Date: 11.07.12
Drg No: 7163 L(00)25 1:200@A1 Rev: A

LEACH RHODES WALKER
Riverside Manchester M3 5AA
t: +44 (0) 161 833 0211 f: +44 (0) 161 832 7757
e: info@lrw.co.uk www.lrw.co.uk