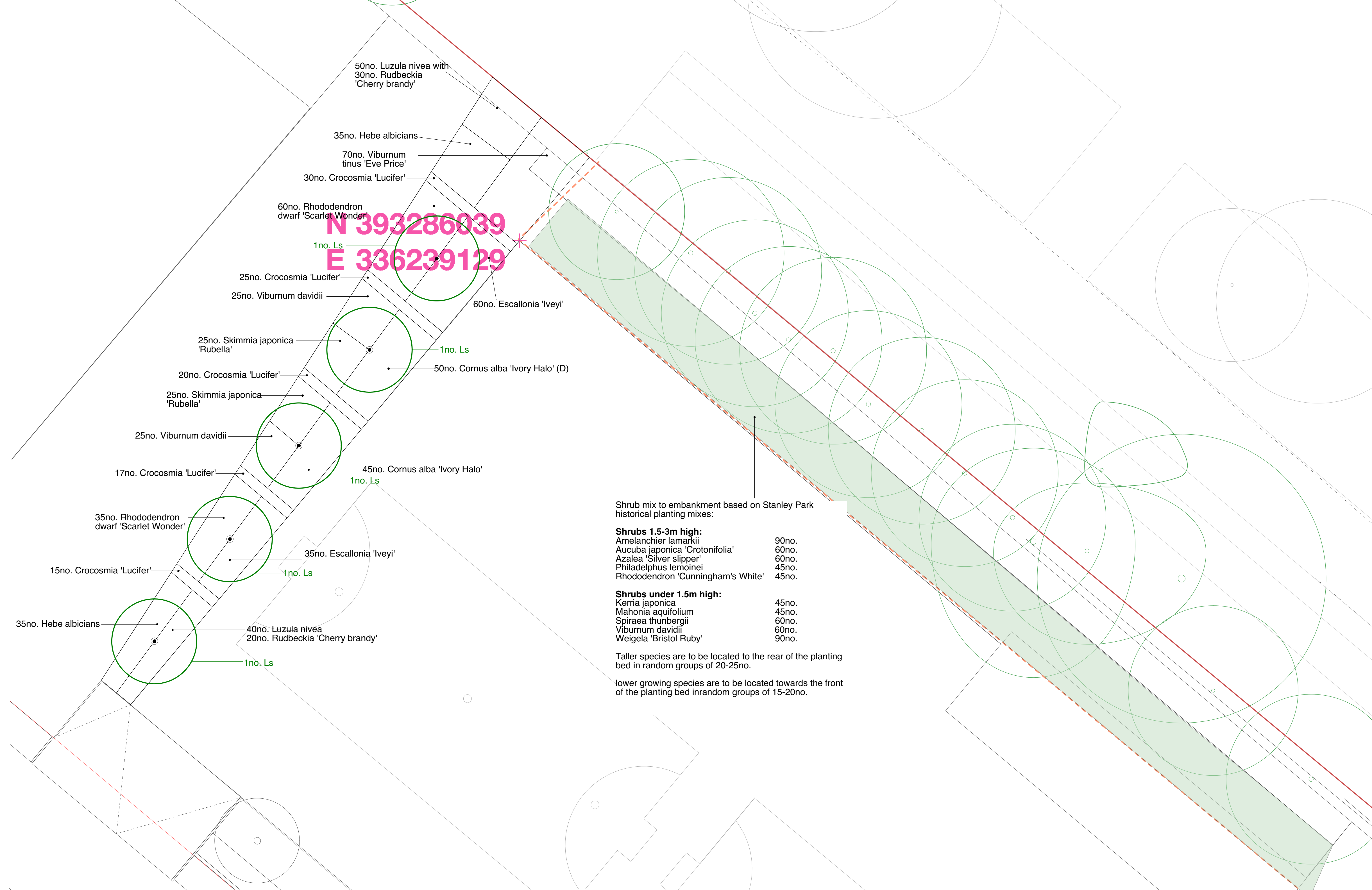


Species	Common Name	Habit	Height	Pot	Density	Specification	Number	
Outside Broadcast Area: Planting Schedule								
Cornus alba 'Ivory Halo'	Dogwood	Deciduous shrub	600-800mm	5Ltr	3/m2	Well branched at ground level	95	
Crocasmia lucifer	Montbretia	Deciduous Perennial	Full pot	3ltr	7/m2		107	
Escallonia 'Iveyi'	Escallonia 'Iveyi'	Evergreen	450-600mm	5Ltr	3/m2		95	
Hebe albicians	White hebe	Evergreen	300-450mm	5Ltr	3/m2		70	
Luzula nivea	Snowy Woodrush	Evergreen Perennial	300-450mm	3ltr	4/m2	Bushy, full,pot	90	
Rhododendron dwarf 'Scarlet Wonder'	Dwarf rhododendron	Evergreen shrub	450-600mm	7.5-10ltr	3/m2	Bushy, full,pot	95	
Rudbeckia 'Cherry Brandy'	Rudbeckia	Deciduous Perennial	Full pot	2ltr	As shown		50	
Skimmia japonica 'Rubella'	Skimmia japonica 'Rubella'	Evergreen	450-600mm	5Ltr	3/m2	Bushy	50	
Viburnum davidii	Viburnum	Evergreen shrub	300-450mm	5Ltr	3/m2	Bushy, full,pot	50	
Viburnum tinus 'Eve Price'	Viburnum	Evergreen shrub	300-450mm	5Ltr	3/m2	Bushy, full,pot	70	
Outside Broadcast: Mix to Stanley Park boundary. 180m2 planting area								
Common Name	Habit	Height	Pot	Density	Specification	Percentage	Number	
Shrubs 1.5-3m high:								
Amelanchier lamarkii	Juneberry	Deciduous shrub	600-900mm	5Ltr	3/m2	Well branched at ground level	15	80
Aucuba japonica 'Crotonifolia'	Spotted laurel	Evergreen shrub	450-600mm	5Ltr	3/m2	Bushy, full,pot	10	55
Azalea 'Silver slipper'	Azalea	Deciduous shrub	300-450mm	5Ltr	3/m2	Bushy, full,pot	10	55
Philadelphus lemoinei	Mock orange blossom	Deciduous shrub	450-600mm	5Ltr	3/m2	Well branched at ground level	7.5	40
Rhododendron 'Cunningham's White'	Rhododendron	Evergreen shrub	450-600mm	5Ltr	3/m2	Bushy, full,pot	7.5	40
Shrubs under 1.5m high:								
Kerria japonica	Jew's mallow	Deciduous shrub	600-900mm	5Ltr	3/m2	Well branched at ground level	7.5	40
Mahonia aquifolium	Mahonia	Evergreen shrub	600-900mm	5Ltr	3/m2	Well branched at ground level	7.5	40
Spiraea thunbergii	Thunberg spiraea	Deciduous shrub	300-450mm	5Ltr	3/m2	Bushy, full,pot	10	55
Viburnum davidii	Viburnum	Evergreen shrub	300-450mm	5Ltr	3/m2	Bushy, full,pot	10	55
Weigela 'Bristol Ruby'	Weigelia	Deciduous shrub	450-600mm	5Ltr	3/m2	Well branched at ground level	15	80
Outside Broadcast: Tree planting								
Classification	Spread at 25yrs	Height at planting	Clear stem	x transplanted	Girth	Root	Number	
Liquidambar styraciflua	Semi mature	5m diameter	6.0-6.5m	min 2.2m	5 X tr. extra wide spacing	30-35cm	Containerised	5



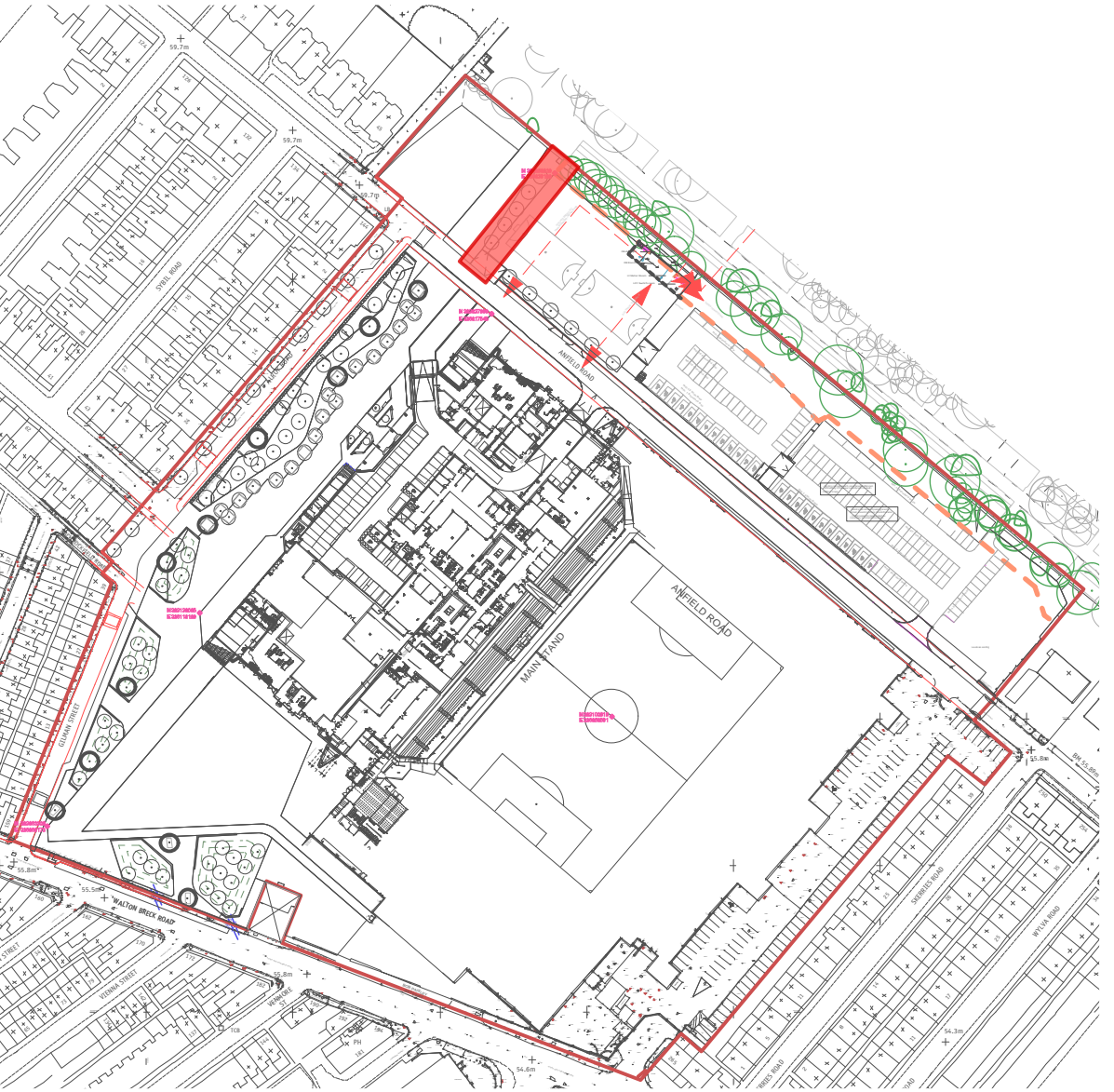
NOTES:

1. Refer to P-ie drawing PL1312.GA.109 for softworks plan
2. Refer to P-ie drawing PL1312.GA.200 for soiling proposals
3. Refer to P-ie drawing PL1312.GA.201 for trees located within the planted areas
4. Refer to P-ie drawing PL1312.D.406/407/408 for tree pit and planting drainage

PLANTING NOTES

1. Plant handling at the nursery, and during transit up to delivery , shall be in accordance with 'Plant Handling' the booklet published by the Committee for Plant Supply and Establishment (CPSE). The contractor shall comply with clauses 3 & 4 of the above booklet (obtained from the Horticulture Trades Association) which refers to the receipt, unloading and temporary storage of plants.
2. Plants shall be first class examples of their species or variety, free from all pests and diseases with good fibrous root systems and materially undamaged. (Refer to relevant sections of BS3936 Parts 1-10 'Specification of Nursery Stock')
3. All planting is to be in general compliance with BS4428: 1989 'Code of Practice for general landscape operations (excluding hard surfaces)'.
 - i) Topsoil to shrub areas to be min 450mm deep
 - ii) Subsoil to shrub areas to be min 300mm deep
4. The contractor must ascertain for himself the exact location of any underground services and maintenance points.
5. At the time of planting, areas will be covered by an approved depth of topsoil in accordance with the associated soiling plan PL1353.GA.200:
 - i) Topsoil to shrub areas to be min 450mm deep
 - ii) Subsoil to shrub areas to be min 300mm deep
6. Water as necessary to ensure the establishment and continued thriving of planted matter.
7. Carry out all work when soil and weather conditions are suitable:
 - i) Do not plant during periods of frost or strong winds. Plant only during the following periods
 - Container grown plants: At any time if ground water and weather conditions are favourable.
 - Bulbs: In accordance with the suppliers recommendationsEnsure that adequate watering and weed control is available.
8. All shrub areas are to be mulched to a consolidated depth of 50mm using an approved Grade A Amenity Bark Mulch.
9. These notes are to be read in conjunction with the associated softworks NBS specification. These notes do not replace the clauses contained within the NBS. The NBS is the priority specification document.

Location plan



6	23.03.16	Planning Discharge	JT	LH
5	29.01.16	Construction	GB	LH
4	05.05.15	Planning condition discharge - Rudbeckia added following LIC comment	GB	LH
3	23.03.15	Planning condition discharge - OB building updated.	GB	LH
2	16.03.15	No change to planting proposals	GB	LH
1	11.09.14	Tender	GB	LH
Rev	Date	Status and Description	Drawn	Apprvd.

- NOTE:
1. Do not scale from this drawing
 2. All setting out, levels and dimensions to be agreed on site.
 3. The dimensions of all materials must be checked on site before being laid out.
 4. This drawing must be read with the relevant specification clauses and detail drawings
 5. Order of construction and setting out to be agreed on site.
 6. This drawing is copyright protected and may not be reproduced in whole or part without written authority.
 7. All Dimensions are in millimetres unless Otherwise Stated



Planit - IE LLP
2 Back Grafton St Altrincham WA14 1DY
0161 928 9281
18 Bowling Green Lane London EC1R 0BW
020 7253 5678

Project	New Anfield				
Client	Liverpool Football Club				
Drg title	OB - Shrub and herbaceous planting proposals				
Drg nr	PL1312.GA.205				
Scale	1:75@A1	Date:	21.07.14	Drawn	AT
Status	Construction	Checked	LH		