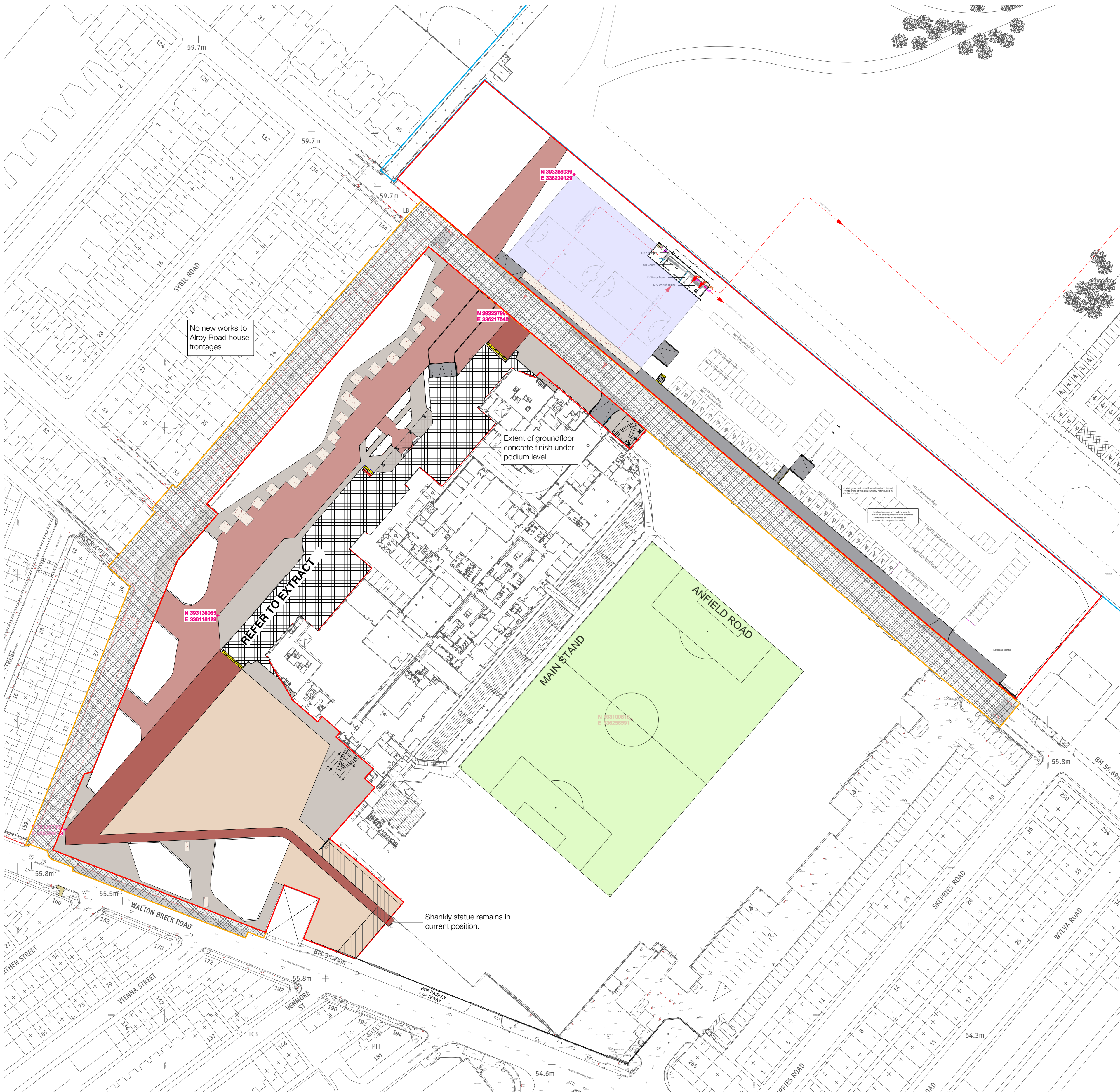
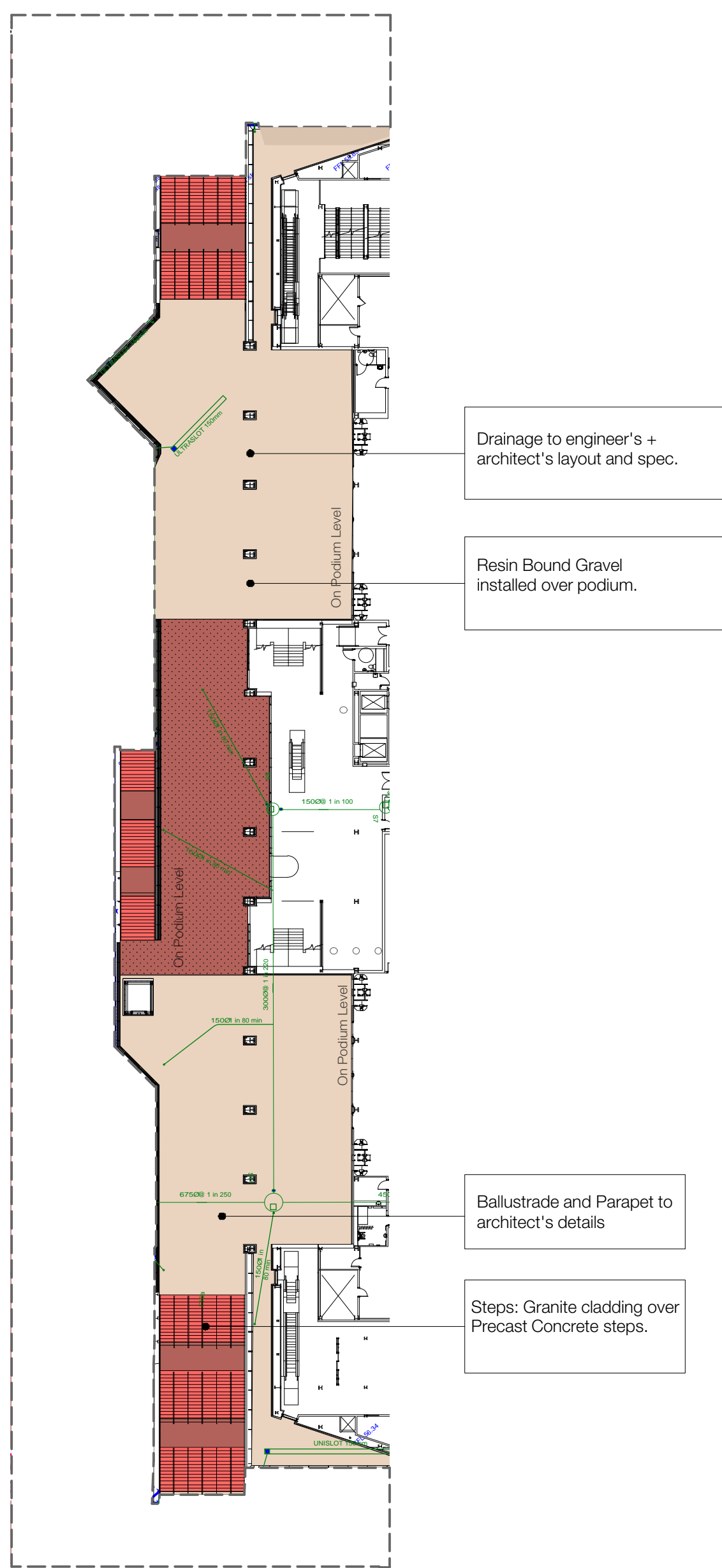


Hardworks General Arrangement 1:750 @A1



Podium Layout 1:500 @A1



THIS DRAWING IS COPYRIGHT PROTECTED AND MAY NOT BE REPRODUCED IN WHOLE OR PART WITHOUT WRITTEN AUTHORITY FROM THE OWNER.

- NOTE:**
- Do not scale from this drawing. Always work to noted dimensions.
 - All dimensions are in millimetres unless otherwise stated.
 - All setting out, levels and dimensions to be agreed on site.
 - The dimensions of all materials must be checked on site before being laid out.
 - This drawing must be read with the relevant specification clauses and detail drawings.
 - Order of construction and setting out to be agreed on site.

HARDWORKS KEY

HARDWORKS

- CONCRETE BLOCK PAVING**
 - Throughout Stadium public realm
 - Product: Blockwork by Ackroyd Glover
 - Colour: To Engineer's spec.
 - Loading Class: 1/10
 - Sub-base: To Engineer's spec.
 - Unit Size Mix - Random: 50%: 200 x 150 x 80mm
 - Unit Size Mix - Random: 50%: 100 x 150 x 80mm
 - Unit Size Mix - Random: 100%: 200 x 150 x 80mm
 - Header Course: Single End to end
 - Sub-base: To Engineer's spec.
 - Loading Class: To Engineer's spec.
 - Please refer to specification for further details
- RESIN BOUND GRAVEL**
 - To Stadium Podium / Concourse
 - Product: Ackroyd Glover Ltd
 - Colour: To Engineer's spec.
 - Sub-base: To Engineer's spec.
 - Loading Class: To Engineer's spec.
- GRANITE CLADDING + TREADS**
 - To stadium podium concrete steps
 - Colour: Granite - To Engineer's spec.
 - Header Course: Single End to end
 - Sub-base: To Engineer's spec.
 - Loading Class: To Engineer's spec.
 - Please refer to specification for further details
- CONCRETE ASPHALT**
 - To 200mm
 - Product: Hardbase by Mills Muggill Ltd
 - Colour: To Engineer's spec.
 - Loading Class: To Engineer's spec.
- TREE PIT WITH SELF BINDER GRAVEL**
 - Superficial by CED Ltd
 - Product: C-1000 80/200
 - Colour: To Engineer's spec.
 - Sub-base: To Engineer's spec.
 - Unit Size Mix - Random: 50%: 200 x 150 x 80mm
 - Unit Size Mix - Random: 50%: 100 x 150 x 80mm
 - Unit Size Mix - Random: 100%: 200 x 150 x 80mm
 - Header Course: Single End to end
 - Sub-base: To Engineer's spec.
 - Loading Class: To Engineer's spec.
 - Please refer to specification for further details
- EXISTING MACADAM HIGHWAY**
 - To stadium ramp / take up level changes as shown
 - Walls are new / proposed / existing as noted
 - For further details refer to relevant specification
- PROPOSED MACADAM SURFACE**
 - As shown and highway adjustments as required to SDD approved
- PROPOSED PCC FLATS**
 - Refer to relevant specification
 - To LCC adoptable standards as required
- EXISTING WALKWAY ALIGNED RETAINED**
 - Kerbs to be removed / replaced as needed to create street
 - Existing kerbs / walls to be retained
 - Refer to relevant specification
- HARDWORKS MISCELLANEOUS**
- TACTILE PAVING**
 - Material: Tactile White / Light grey granite, flamed
 - Size: 150 x 150 x 20mm
- ANTI-SLIP LUGS / INTERLOCKING MACADAM**
 - Material: G10 - To SDD
 - Product: Thermoplastic marking by Thermark
 - Colour: White, subject to final approval
 - Provision: Markings for 300, 500 and 1000mm
 - Refer to relevant specification
- CONCRETE RETAINING WALL**
 - To stadium ramp / take up level changes as shown
 - Walls are new / proposed / existing as noted
 - For further details refer to relevant specification
- STEPS: E10 - 2000A**
 - To stadium ramp / take up level changes as shown
 - Product: Granite cladding over precast concrete steps
 - Refer to relevant specification
 - Size: 300mm wide x 150mm deep x 100mm high
 - Refer to relevant specification
- Handrail: G11**
 - Material: Handrail Design Ltd: 01604 817 800
 - Size: 800mm high x 40mm dia. Various lengths
 - Refer to relevant specification

INTERFACE WITH ADOPTABLE FOOTPATHS TO BE DELINEATED WITH FLUSH METAL EDGES

12	23.03.16	Planning Discharge	JT	LH
11	29.01.16	Construction	JT	GB
10	05.08.15	Planning - Section 73	JT	GB
9	06.07.15	Planning - Section 73	JT	GB
8	09.03.15	Amendments to materials	GB	GB
7	05.06.15	Following LPA and client comments	GB	GB
6	13.03.15	Planning	JT	GB
5	08.09.14	TENDER	JT	GB
4	19.08.14	TENDER	JT	GB
3	12.08.14	General Amendments	JT	GB
2	05.06.14	Amendments to R2 geometry on Alloy Road	RM	LH
1	09.05.14	Stage D Issue	RM	LH

Issue	Date	Status	Drawn	Apprvd.
-------	------	--------	-------	---------

Planit Intelligent Environments LLP
E: info@planit-ie.com W: planit-ie.com

MANCHESTER
2 Back Grafton St
Altrincham
WA14 1DY
T: 0161 928 9281

LONDON
18 Bowling Green Lane
London
EC1R 0BW
T: 0207 253 5678

Client Liverpool Football Club

Project New Anfield

Drg Title General Arrangement
Hardworks

Created on 22.01.2016 Created by JT Approved by LH

Scale 1:750 Size A1 Status Construction

Drg No. PL1312.GA.108 Issue