



LFC STADIUM EXPANSION

SOFTWARES MAINTENANCE SCHEDULE

FEBRUARY 2016

[Job reference PL1312-ID-06]
[Work stage - Planning]

DOCUMENT CONTROL		
Project	PL1312	
Client	LFC	
Title of Document	Softworks Maintenance Guide	
File Origin		
Consultant Information	<div><div><div>Planit Intelligent Environments LLP</div><div>Manchester Studio</div><div>2 Back Grafton Street</div><div>Altrincham</div><div>Cheshire</div><div>WA14 1DY</div><div>0161 9289821</div><div>info@planit-ie.com</div></div><div></div></div>	
DOCUMENT CONTROL:		
Prepared by:	[JT Jotaro Tokunaga]	[G Baines]
Checked by:	[LH]	[L Humblet]
		Signed:
Verified by:	[LH]	[L Humblet]
		Signed:
Issue	[09.02.16]	Status: Planning
	<div></div>	
CONTRIBUTORS LIST:		

CONTENTS

1.0 INTRODUCTION

2.0 DESIGN & MANAGEMENT OBJECTIVES

2.1 SOFTWORKS PROPOSALS

3.0 LANDSCAPE MANAGEMENT PLAN

4.0 MAINTENANCE OPERATIONS

4.1 TREE WORK GENERALLY

4.2 ORNAMENTAL SHRUBS

4.3 AMENITY GRASS

4.4 HERBACEOUS PLANTING

4.5 FORMAL HEDGE

4.6 CLIMBING PLANTS

5.0 APPENDIX - DRAWINGS

5.1 GENERAL ARRANGEMENT - SOFTWORKS - PL1312_GA109

5.2 SOFTWORKS - TREE SPECIES LAYOUT - PL1312_GA 201

5.3 WATERING POINT LOCATIONS - PL1312_GA 129

5.4 ALROY ROAD - SOFTWORKS - PL1312_GA 203

5.5 MEMORIAL GARDEN - SOFTWORKS PL1312_GA 204

5.6 OUTSIDE BROADCAST - SOFTWORKS PL1312_GA 205

5.7 SOILING PLAN - PL1312_GA 200

1.0 INTRODUCTION

GENERAL

Planit-IE LLP have prepared this report in relation to proposed Main Stand Expansion project for Liverpool Football Club, Anfield, Liverpool.

Consideration during the design stage has been given to the future maintenance requirements of the Softworks elements within the public realm associated with the Main Stand Expansion.

For LFC the Maintenance Manual will be adopted, controlled and enforced by a management team committed to excellence in maintaining their area. The following maintenance schedules should be read in conjunction with the landscape design proposals and wider masterplan objectives.

The Manual must be a living document and be constantly reviewed and updated. The maintenance manual addresses specific maintenance of softworks to assure that the public realm maintains a high quality appearance and setting for the stadium. Once the defects and maintenance period is complete all of the general activities, highlighted below will need to be addressed by LFC’s maintenance team as part of the standard maintenance procedures.

The landscape design proposals can be separated into a number of character types illustrated on the concept plan below and include;

1. The Linear Grove
2. The Memorial Garden and the Hillborough Memorial
3. Anfield Road car park and the outside Broadcast area
4. Stanley Terrace
5. Anfield Square Fan Zone

The drawings to which the maintenance plan relate are:

- PL1312_GA109 - GENERAL ARRANGEMENT - SOFTWORKS
- PL1312_GA 201 - SOFTWORKS - TREE SPECIES LAYOUT
- PL1312_GA 129 - WATERING POINT LOCATIONS
- PL1312_GA 203 - ALROY ROAD - SOFTWORKS
- PL1312_GA 204 - MEMORIAL GARDEN - SOFTWORKS
- PL1312_GA 205 - OUTSIDE BROADCAST - SOFTWORKS
- PL1312_GA 206 - PLANTING SCHEDULE



2.0 DESIGN & MANAGEMENT OBJECTIVES

DESIGN OBJECTIVES

The public realm improvements have been carefully considered to achieve successful integration into the fabric of the neighbourhood and improve wider legibility. The expansion of the Main Stand and potential future expansion of the Anfield Road Stand brings the opportunity to wrap the stadium within a new landscape – delivering a series of routes, spaces and places that enhance both the match day experience and also improve wider linkages between Stanley Park and Walton Breck Road.

There is the intention is to create a distinctive, contemporary new setting for the stadium expanding the relationship with Stanley Park, the Kempian principles, its paths and assets need to be carefully integrated into the design.

Trees have been proposed where they will make a positive contribution to the streetscape and care has been taken to provide a flexible landscape, which does not compromise match day circulation or the flexibility of the fan zones.

Whilst a number of new native parkland trees are proposed, to help extend the character of Stanley Park, a number of new trees types including some modern cultivars are also proposed, reflecting the character of the new design. A number of these tree varieties also subtly reference the clubs colours with red cultivars being chosen for their summer and autumn colour. The use of semi-mature trees is proposed throughout the fabric of the design all of which would have a minimum clear stem height of 2.2m to maintain clear sight lines in accordance with Secure By Design guidance.

Whilst the principles of Kemp have been applied to the scale and location of planting, the design response proposes to use shrubs and perennials in a more contemporary manner, with large blocks of single species, clipped and manicured to create the character of a modern European park. The purpose of this plan is to ensure that all landscape elements establish and mature successfully, to the benefit of both LFC and the wider community.

MANAGEMENT OBJECTIVES

To prescribe all necessary management and maintenance principles and management tasks to enable successful establishment and ensure the continued maturing of all landscape elements.

- To ensure the continuing health of existing vegetation
- To ensure the successful integration of existing and proposed vegetation
- To ensure that the management and maintenance regime is appropriate to the site
- To provide a mechanism for the ongoing monitoring and reviewing of the management plan and the specific maintenance operations contained therein.

A number of separate, yet inter related, vegetation types exist and are proposed for the site:

- i. Proposed tree planting
- ii. Proposed amenity grass
- iii. Proposed ornamental shrubs and hedge planting
- iv. Climbers (to Hillsborough Gardens)

OBJECTIVES

Highlighted below are the key objectives that have been incorporated into the landscape design:

- Facilitate large match day flow and gathering (including flows along Anfield Road)
- Mark the transition between the Park and the Stadium.
- Welcome match day visitors walking from across the Park and Cemetery.
- Provide a contemporary landscape design that encourages dwelling.
- Connect Anfield Road with Dahlia Walk/Car parking.
- Provide flexible non-match day space to Fan Zone areas.

2.1 DESIGN & MANAGEMENT OBJECTIVES
SOFTWORKS PROPOSALS

EXISTING TREES

SHRUB AND TREE
PLANTING TO OB AREA

HEDGE

ORNAMENTAL
PLANTING

HILLSBOROUGH
GARDENS

PROPOSED TREES
[IN SOFT STANDING]

PROPOSED TREES
[IN HARD STANDING]

AMENITY LAWN



3.0 LANDSCAPE MANAGEMENT PLAN

BRIEF

The brief below describes the framework:

- The management plan will cover a time period of 15 years
- The Management Plan must give consideration to environmentally sensitive design and management
- The conservation of existing features will be a prime consideration
- The Management Plan will seek to provide a net increase in the nature conservation value of the site

MONITORING

The Management Plan’s life span has been divided into key stages of 5 yearly intervals. These will be used as the basis for developing the plan and setting reviewing targets.

Monitoring is of fundamental importance, since this is the means by which the success of the plan will be measured. It is therefore important to establish standardised survey and monitoring methods, which enable valid year on year comparisons to be made. There will be a need for flexibility during its implementation. The Management Plan must be an evolving one, able to adapt to the specific needs of the Club.

At the outset of the plan LFC’s maintenance team will need to work alongside the initial landscape and maintenance sub-contractor to monitor and provide guidance on ongoing wider management and maintenance issues. This maintenance provider should undertake an annual review of the site, providing written documentation as to the ongoing establishment of the planting. This report should include a condition review of all new and existing plant material, success rates of newly planted material, and recommendations for future management regimes and immediate management requirements.

Landscape Designations

The development site is not protected by any local or national landscape designations. However, the site does interface with Stanley Park which is a Grade II* registered landscape.

Planning Conditions

As part of the planning conditions a 5 year maintenance requirement has been placed on the trees to allow for their establishment.

MANAGEMENT PRINCIPLES

Proposed individual trees:

- To ensure satisfactory establishment and continuing health.
- To maintain the plants in a healthy condition and develop the site tree structure.
- To ensure the successful establishment and continuity of the overall design concept.
- To establish a valued and appropriate amenity.

Amenity grass:

- To ensure the successful establishment of the sward
- To maintain a healthy and attractive sward that is fit for purpose and anticipated use
- To prevent the spread of woody vegetation from structure planting and ornamental shrub areas
- To control undesirable herbaceous species
- To maintain the integrity of the grass mix specified and remove any non-native self seeded material

Ornamental, herbaceous, climber and hedge planting:

- To ensure satisfactory establishment and continuing health
- To maintain plants in a healthy and attractive condition
- To ensure the successful establishment and continuity of the overall design concept.
- To establish a mechanism for the replacement of any failing plant or one which has reached maturity
- To ensure planting within public areas is maintained below a maximum height of 1m to meet the guidance set within Secure by Design with the exception of wall mounted climbers.

4.0 MAINTENANCE OPERATION

A Health and Safety plan is an important consideration for any area of public realm. The landscape maintenance team will be expected to produce a risk assessment and method statement for the maintenance of the planting areas.

Highways

Maintenance works associated with works adjacent to highways will need to be consdiered as part of the general management and maintenance procedures

Chemicals

Chemicals generally should be restricted in use. All chemicals, herbicides, pesticides and fertilisers, should be approved by English Nature and should be used, stored and disposed of in accordance with EN guidelines and COSHH Regulations 2002.

Watering points

A number of watering points have been incorporated within the design. Where possible the spacing between the water points has been coordinated to allow a 50m hose to reach all planting areas. Potable watering points are also included within the design however it is noted that this cannot be used for irrigation purposes.

MAINTENANCE OPERATIONS

Set out in the tables overleaf are the maintenance operations that should be carried out over the next 15 years in order to achieve the design objectives. They have been set out in a format that can be easily followed by all parties, ensuring that the Management Plan exists and a working document and not an archived report. The management prescriptions are flexible such that each section can be changed and updated on an annual basis, allowing targets to be set, progress monitored and accurate reporting made.

PROJECTED MAINTENANCE

The tree species have been carefully chosen for their suitability to the location. Formative pruning has already been carried out on the nursery and this will produce suitable growth and canopy shape for the space provided.

In the event of any structural damage to the trees by unknown circumstances such as an extreme weather event the following guidelines should be observed:

Where possible, pruning should be carried out in the dormant season to avoid excessive sap loss. The onset of sap pressure varies with species so the following timetable should be observed ;

Acer freemani ‘Autumn Blaze’ ;	prune February
Liquidamber styraciflua ;	prune March/April
Quercus palustris ;	prune March/April
Nyssa sylvatica ;	prune March
Pinus nigra ‘Austriaca’;	prune February
Magnolia Kobus ;	prune April
Pyrus calleryana ‘Chanticleer’;	prune January
Hedging-Ilex aquifolium	Prune August
Buxus	Prune Spring/Autumn/Winter
Irrigation	

Irrigation of the trees and shrub areas particularly during the frist growing season will be fundamental to their long term successful establishment.

NUTRITION

The tree pits have been backfilled with a suitable growing medium containing nutrition sufficient for the initial period of establishment.

After three years it would be advisable to apply an application of fertiliser in the Spring as a top dressing. A broad spectrum fertiliser such as HortiTop Complete (available from Hortifeeds) would be suitable. A routine soil test carried out every 2 years would establish the need for any supplementary fertiliser.

Trees with hard standing should have a liquid fertiliser applied annually during spring.

4.1 MAINTENANCE OPERATION – TREE WORK GENERALLY

MAINTENANCE OPERATION

- **Identification:** Before starting work agree which trees are to be removed or pruned
- **Protection:** Avoid damage to neighbouring trees, plants and buildings
- **Standards:** To BS 3998 and Health & Safety Executive (HSE) ‘Forestry and arboriculture safety leaflets’
- **Removing branches:** Cut as shown in Arboricultural Association Leaflet No 8 ‘Mature tree maintenance’. Cut vertical branches similarly, with no more slope on the cut surface than is necessary to shed rainwater
- **Appearance:** Leave trees with a well balanced natural appearance
- **Chain saw work:** Operatives must hold a Certificate of Competence
- **Tree work:** To be carried out by an approved member of the Arboricultural Association

ADDITIONAL WORK

- Defective, diseased, unsafe or weak parts of trees additional to those scheduled for attention: Give notice if detected.

PREVENTION OF WOUND BLEEDING

- **Standard:** To BS 3998, clause 8.

PREVENTION OF DISEASE TRANSMISSION

- **Standard:** To BS 3998, clause 9 and Appendix B.

WATER RESTRICTIONS

- **General:** If water supply is, or is likely to be, restricted by emergency legislation, submit proposals for an alternative suitable source of water. Obtain instructions before proceeding.

Maintenance Operation Number	Prescription	Year (s)	Season	Frequency (per year)
3.2.3	TREE PLANTING			
	Maintenance during defects liability period of 5 years after planting whichever is the greater	1 – 5	As required	2 March - September
	To establish new planting, maintain a 1m diameter weed free area around all trees within grass. Trees within self bound gravel should be maintained totally free of weeds.	1 – 5	Spring - Autumn	1
	UNDERGROUND TREE GUY WIRES			
	Inspection / maintenance times: Quarterly and after strong winds	1 – 5	Throughout year	2
	Operations: Replace or re-secure loose or missing guy wires			
	Adjust to suit stem growth and to provide correct and uniform tension			
	Apply granular fertiliser according to manufacturer’s recommendations	1 – 5	Spring - Autumn	Bi-annual
	Ensure trees remain firmly bedded after disturbance and re-firm as necessary	1 – 5	As required	1
	Control all pests and diseases as necessary	1 – 5	As required	To be determined
	Prune in accordance with good horticultural practice, thin, trim and shape as appropriate. Eg. Removing branches: Do not damage or tear the stem. Wounds: Keep as small as possible and cut cleanly back to sound wood. Cutting: Make cuts above and sloping away from an outward facing healthy, angled so that water will not collect on cut area. Larger branches: Prune neither flush nor leaving a stub, but using the branch bark ridge or branch collar as a pruning guide. Tools: Use clean sharp secateurs, handsaws or other approved tools. Disease of infection: Give notice if detected. Growth retardants, fungicide or pruning sealant: Do not use unless instructed			
	Prune all trees annually as needed to maintain a minimum 2.2m clear stem and desired form.	1 – 5	Autumn - early Winter	1 As required
	Watering – Regular checks using a moisture probe testing during the first two years after planting on a monthly cycle during the summer months of May-September	1 – 2	Monthly	24
	Water as necessary to ensure healthy growth	3	As required	As required
	Replace dead or damaged trees to original specification. Remove within 1 month or as soon as possible and replace within the next available planting season	1 - 5	Autumn	1
	Top up mulching to original specification annually	1 - 5	Spring	1
	Autumn LEAF REMOVAL			
	Collect accumulations of drifted leaves from the vicinity and from paved lawn area	1 - 5	Autumn/Winter	As required
	Arisings: Remove			

4.2 MAINTENANCE OPERATION – ORNAMENTAL SHRUBS

MAINTENANCE OPERATION

- **Duration:** Defects Liability Period or 5 years, whichever is the greater
- **Weed control:** Keep planting beds clear of weeds by applying herbicide.
- **Watering:** As necessary to ensure establishment of planting
- **Soil condition:** Fork over beds to keep soil loose, with gentle cambers and no hollows.
Do not reduce depth or effect of mulch.

Maintenance Operation Number	Prescription	Year (s)	Season	Frequency (per year)
	ORNAMENTAL SHRUB PLANTING			
	Maintenance during defects liability period or 5 years after planting, whichever is the greater			
	Maintain weed free area to the surface of all planting areas	1 – 5	March - October	9
	Fertiliser application	1 – 5	Spring	1
	Re-firm all shrubs as necessary	1 – 5	Spring - Autumn	9
	Prune as necessary to encourage healthy growth and to maintain any clipped forms as illustrated on the drawings	1 – 5	Spring - Autumn	2
	Control all pests and diseases as necessary	1 – 5	As required	As required
	Remove all dead or damaged material	1 – 5	March - October	9
	Watering – Regular checks using a moisture probe testing during the first year after planting on a monthly cycle during the summer months of May-September.	1	May - Sept Autumn	5
	Water as necessary to ensure healthy growth	1 -2	Spring - September	As required
	Replace dead or damaged material to original specification	1 - 5	Autumn	1
	Top up mulching annually to a minimum depth of 50mm	1-5	Spring	1

4.3 MAINTENANCE OPERATION – AMENITY GRASS

MAINTENANCE OPERATION

GRASSED AREAS - GENERALLY

- **General:** Maintain turf in a manner appropriate to the intended use
- **Grass height:** Maintain within range specified in clauses 25-30mm
- **Soil and grass condition:**
 - **Condition:** Maintain a healthy vigorous sward, free from disease, fungal growth, discolouration, scorch or wilt
 - **Waterlogging and compaction:** Prevent.
 - **Damage:** Repair trampling, abrasion or scalping caused by mowing
- **Ornamental turf and lawns:** Maintain reasonably free from moss, excessive thatch, weeds, frost heave, worm casts and mole hills
- **Edges:** Neat and well defined, in clean straight lines
- **Litter and fallen leaves:** Remove regularly to maintain a neat appearance
- **Before mowing:** Remove litter, rubbish and debris
- **Finish:** Neat and even, without surface rutting, compaction or damage to grass
- **Adjoining hard areas:** Sweep clear and remove arisings

Maintenance Operation Number	Prescription	Year (s)	Season	Frequency (per year)
3.2.5	AMENITY GRASS MAINTENANCE			
	Maintenance during defects liability period or 5 years after sowing / laying whichever is the greater			
	Water as necessary during establishment period to ensure healthy growth. (Weekly if required)	1	May – September	As required-(weekly)
	Cutting - maintain grass between 25-30mm using suitable machinery and remove arisings	1 – 5	May – October	As required
	Maintain sharp and even	1 – 5	May – October	As required
	Edge all lawned areas	1 – 5	May – October	2
	Spring fertilizer application – slow release 60g/m2	1 – 5	Spring	1
	Autumn fertilizer application - slow release 60g/m2	1 - 5	Autumn	1
	Apply herbicide as necessary to keep sward substantially (95%) free of broad leaved weeds	1 - 5	May - October	As required
	REINSTATEMENT OF DAMAGED LAWNS	1 - 5	May - October	As required
	Damaged turf: Remove to a depth of 40mm.			
	Preparation: Cultivate substrate to a fine tilth.			
	Reinstatement: Re-turfing: Quality and appearance to match existing.			
	Protection and watering: Provide as necessary to promote successful germination and/ or establishment.			

4.4 MAINTENANCE OPERATION – HERBACEOUS PLANTING

MAINTENANCE OPERATION

- **Duration:** Defects Liability Period or 5 years, whichever is the greater.
- **Weed control:** Keep planting beds clear of weeds by applying herbicide.
- **Watering:** As necessary to ensure establishment of planting
- **Soil condition:** Fork over beds to keep soil loose, with gentle cambers and no hollows. Do not reduce depth or effect of mulch.

Maintenance Operation Number	Prescription	Year (s)	Season	Frequency (per year)
	HERBACEOUS PLANTING			
	Maintenance during defects liability period or 5 years after planting whichever is the greater			
	• Maintain weed free area to the surface of all planting areas	1 – 5	March / October	9
	• Application of granular fertilizer (15:15:15)	1 – 5	Spring	1
	• Ensure plants remain firmly bedded after disturbance and re-firm as necessary	1 – 5	As required	Each maintenance visit
	• Re-firm plant supports and replace as needed	1 –5	As required	Each maintenance visit
	• Prune as necessary to encourage healthy growth as illustrated on the drawings: Prune herbaceous perennials as required to maintain form and supply supports as needed during the growing season.	1 –5	Spring/Summer	1
	• Prune hardy herbaceous perennials in autumn retaining feature flower heads or seed heads to provide interest through the winter months	1 –5	Autumn	1
	• Prune tender perennials and borderline hardy perennials in spring once the risk of frost has passed (April / May). This is to protect the growing crown during winter.	1 – 5	April/May	1
	• Cut back early flowering perennials near to ground level after flowering to encourage fresh foliage and later summer flowering. Cut back again in spring.	1 – 5	Summer & spring	2
	• Control all pests and diseases as necessary	1 – 5	As required	As required
	• Replace any dead/ under performing plants. Where planting continually fails to establish, undertake investigations to ascertain any underlying cause.	1 - 5	March/October	As required
	• Watering – Regular checks using a moisture probe testing during the first year after planting on a monthly cycle during the summer months of May-September.	1	May/September	5
	• Water as necessary to ensure healthy growth. Water as necessary to ensure healthy growth. If water supply is, or is likely to be, restricted by emergency legisla- tion, submit proposals for an alternative suitable source of water. Obtain instructions before proceeding.	1 – 5	As required	As required
	• Top up mulch planting to original specification at the start of each year after the cutting back of tender perennials.	1 – 5	Spring	1
	• Divide large groups of perennials every 3 years:	3	Spring/Autumn	1
	• Divide summer flowering plants in spring or autumn providing that the ground is dry enough to work.	3	Summer	1
	• Divide spring flowering plants in summer after flowering.			

4.5 MAINTENANCE OPERATION – FORMAL HEDGE

MAINTENANCE OPERATION

- **Duration:** Defects Liability Period or 5 years, whichever is the greater.
- **Weed control:** Keep all hedgeliners clear of weeds by a combinatino of herbicide applications and hand weeding.
- **Watering:** As necessary to ensure establishment of planting

Maintenance Operation Number	Prescription	Year (s)	Season	Frequency (per year)
	FORMAL HEDGES Maintenance during defects liability period or 5 years after planting whichever is the greater <ul style="list-style-type: none">• Maintain a 1m wide weed free strip to the line of new hedge planting by a combination of hand weeding and herbicide operations• Application of granular fertilizer (15:15:15)• Ensure plants remain firmly bedded after disturbance and re-firm as necessary• Check any support fencing for defects and replace repair where required• Watering – Regular checks using a moisture probe testing during the first year after planting on a monthly cycle during the summer months of May-September.• Water as necessary to ensure healthy growth. If water supply is, or is likely to be, restricted by emergency legislation, submit proposals for an alternative suitable source of water. Obtain instructions before proceeding.• Control all pests and diseases as necessary• Replace any dead/ under performing plants. Where planting continually fails to establish, undertake investigations to ascertain any underlying cause.• Trim hedging to agreed final heights. Trim to a gentle ‘A’ form to allow light to reach lower areas. Do not prune out leaders until final height has been reached• Top up mulch planting to original specification at the start of each year			
		1 - 5	March to October	9
		1 - 5	Spring	1
		1 - 5	As required	Each maintenance visit
		1 - 5	As required	Each maintenance visit
		1	May/September	5
		1 – 5	As required	As required
		1 - 5	As required	As required
		1 - 5	March/October	As required
		1 - 5	Spring and Autumn	2
		1 - 5	Spring	1

4.6 MAINTENANCE OPERATION – CLIMBING PLANTS

MAINTENANCE OPERATION

- **Duration:** Write here if needed
- **Weed control:** Write here if needed
- **Watering:** Write here if needed
- **Soil condition:** Write here if needed

Maintenance Operation Number	Prescription	Year (s)	Season	Frequency (per year)
	CLIMBING PLANTS Maintenance during defects liability period or 5 years after planting, whichever is the greater. Operations to include: <ul style="list-style-type: none">• Maintain all areas in a weed free condition through hand weeding operations and herbicide applications.• Application of granular fertilizer (15:15:15)• Water as necessary to ensure establishment and continuing health• Ensure plants remain firmly bedded after disturbance and re-firm as necessary• Control all pests and diseases as necessary• Replace any dead or dying plants implemented in year 1• Prune to suit desired area	1 – 5	As required	As required
		1 – 5	Spring	1
		1 – 5	As required	As required
		1 – 5	As required	As required
		1 – 5	As required	As required
		1 – 5	Autumn	1
		1 – 5	Autumn	1

5.0 APPENDIX - DRAWINGS

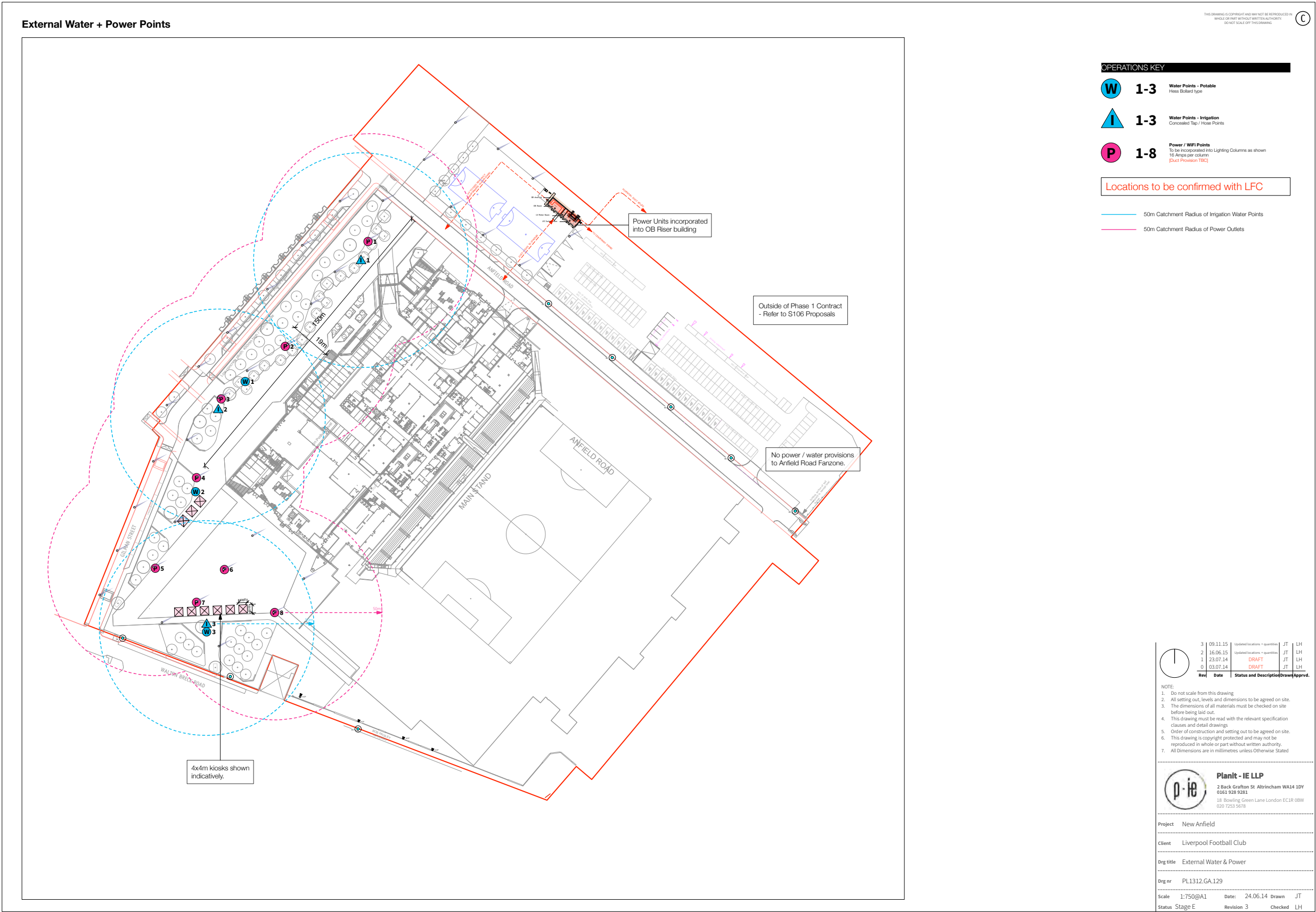
5.1 SOFTWORKS GENERAL ARRANGEMENT - PL1312_GA_109



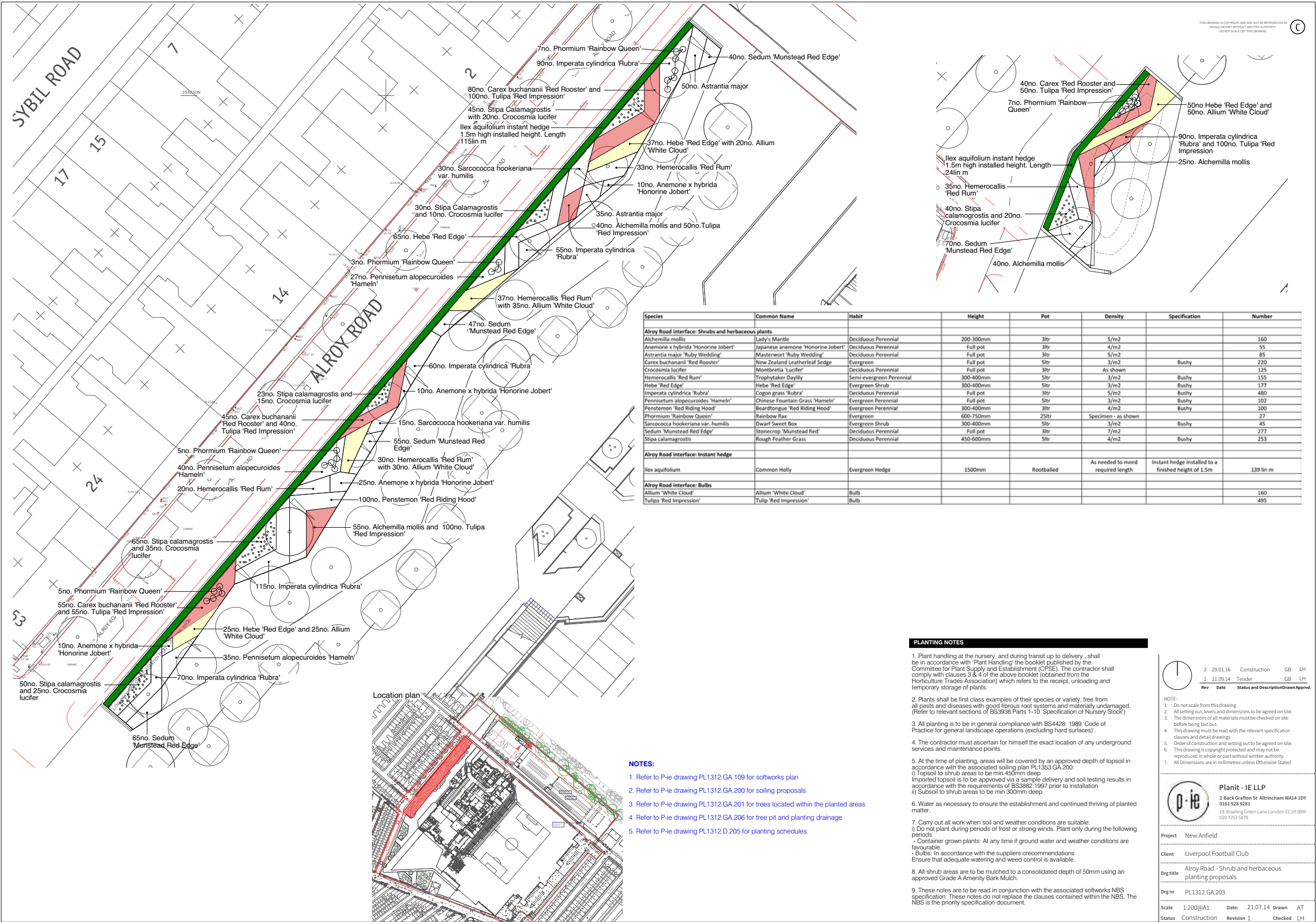
5.2 SOFTWORKS TREE SPECIES LAYOUT - PL1312_GA_201



5.3 WATERING POINTS - PL1312_GA_129



5.4 ALROY ROAD - SOFTWORKS - PL1312_GA_203

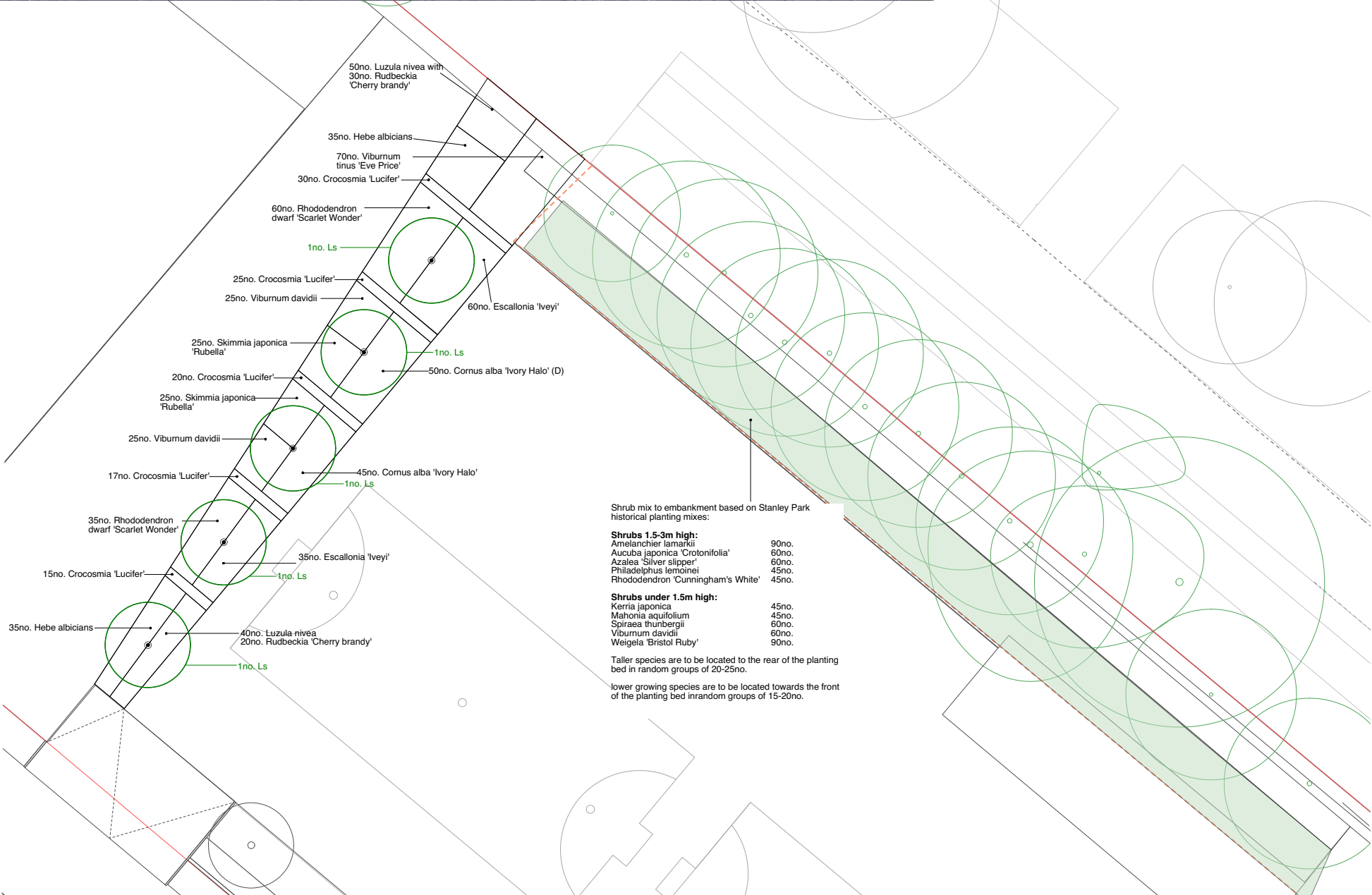


LFC Anfield Stadium Expansion



5.6 OUTSIDE BROADCAST AREA-SOFTWORKS - PL1312_GA_205



Species	Common Name	Habit	Height	Pot	Density	Specification	Number	
Outside Broadcast Area- Planting Schedule								
Cornus alba 'Ivory Halo'	Dogwood	Deciduous shrub	600-800mm	SLtr	3/m2	Well branched at ground level	95	
Crocasmia lucifer	Moonbeetia	Deciduous Perennial	Full pot	SLtr	7/m2		107	
Escallonia 'Iveyi'	Escallonia 'Iveyi'	Evergreen	450-600mm	SLtr	3/m2		95	
Hebe albicans	White hebe	Evergreen	300-450mm	SLtr	3/m2		70	
Luzula nivea	Snowy Woodrush	Evergreen Perennial	300-450mm	3tr	4/m2	Bushy, full pot	90	
Rhododendron dwarf 'Scarlet Wonder'	Dwarf Rhododendron	Evergreen shrub	450-600mm	7.5 SLtr	3/m2	Bushy, full pot	95	
Rudbeckia 'Cherry Brandy'	Rudbeckia	Deciduous Perennial	Full pot	2tr	As shown		50	
Skimmia japonica 'Rubella'	Skimmia japonica 'Rubella'	Evergreen	450-600mm	SLtr	3/m2	Bushy	50	
Viburnum davidii	Viburnum	Evergreen shrub	300-450mm	SLtr	3/m2	Bushy, full pot	50	
Viburnum tinus 'Eve Price'	Viburnum	Evergreen shrub	300-450mm	SLtr	3/m2	Bushy, full pot	70	
Outside Broadcast: Mix to Stanley Park boundary, 180m2 planting area								
	Common Name	Habit	Height	Pot	Density	Specification	Percentage	Number
Shrubs 1.5-3m high:								
	Juneberry	Deciduous shrub	600-800mm	SLtr	3/m2	Well branched at ground level	15	80
	Aucuba japonica 'Crotonifolia'	Evergreen shrub	450-600mm	SLtr	3/m2	Bushy, full pot	10	55
	Azalea 'Silver slipper'	Deciduous shrub	300-450mm	SLtr	3/m2	Bushy, full pot	10	55
	Mock orange blossom	Deciduous shrub	450-600mm	SLtr	3/m2	Well branched at ground level	7.5	40
	Rhododendron 'Cunningham's White'	Evergreen shrub	450-600mm	SLtr	3/m2	Bushy, full pot	7.5	40
Shrubs under 1.5m high:								
	Jew's mallow	Deciduous shrub	600-800mm	SLtr	3/m2	Well branched at ground level	7.5	40
	Mahonia aquifolium	Evergreen shrub	600-900mm	SLtr	3/m2	Well branched at ground level	7.5	40
	Thunberg spiraea	Deciduous shrub	300-450mm	SLtr	3/m2	Bushy, full pot	10	55
	Viburnum davidii	Evergreen shrub	300-450mm	SLtr	3/m2	Bushy, full pot	10	55
	Weigela 'Bristol Ruby'	Deciduous shrub	450-600mm	SLtr	3/m2	Well branched at ground level	15	80
Outside Broadcast: Tree planting								
	Classification	Spread at 25yrs	Height at planting	Clear stem	x transplanted	Girth	Root	Number
Liquidambar styraciflua	Semi mature	5m diameter	6.0-6.5m	min 2.2m	5 x 4 tr. extra wide spacing	30-35cm	Containerised	5



- NOTES:**
1. Refer to P-ie drawing PL1312.GA.109 for softworks plan
 2. Refer to P-ie drawing PL1312.GA.200 for soiling proposals
 3. Refer to P-ie drawing PL1312.GA.201 for trees located within the planted areas
 4. Refer to P-ie drawing PL1312.GA.206 for tree pit and planting drainage
 5. Refer to P-ie drawing PL1312.D.205 for planting schedules

- PLANTING NOTES**
1. Plant handling at the nursery, and during transit up to delivery, shall be in accordance with 'Plant Handling' the booklet published by the Committee for Plant Supply and Establishment (CPSE). The contractor shall comply with clauses 3 & 4 of the above booklet (obtained from the Horticulture Trades Association) which refers to the receipt, unloading and temporary storage of plants.
 2. Plants shall be first class examples of their species or variety, free from all pests and diseases with good fibrous root systems and materially undamaged. (Refer to relevant sections of BS3936 Parts 1-10 'Specification of Nursery Stock')
 3. All planting is to be in general compliance with BS4428: 1989 'Code of Practice for general landscape operations (excluding hard surfaces)'.
 4. The contractor must ascertain for himself the exact location of any underground services and maintenance points.
 5. At the time of planting, areas will be covered by an approved depth of topsoil in accordance with the associated soiling plan PL1353.GA.200:
i) Topsoil to shrub areas to be min 450mm deep
Imported topsoil is to be approved via a sample delivery and soil testing results in accordance with the requirements of BS3882:1997 prior to installation
ii) Subsoil to shrub areas to be min 300mm deep
 6. Water as necessary to ensure the establishment and continued thriving of planted matter.
 7. Carry out all work when soil and weather conditions are suitable:
i) Do not plant during periods of frost or strong winds. Plant only during the following periods
- Container grown plants: At any time if ground water and weather conditions are favourable.
- Bulbs: In accordance with the suppliers recommendations
Ensure that adequate watering and weed control is available.
 8. All shrub areas are to be mulched to a consolidated depth of 50mm using an approved Grade A Amenity Bark Mulch.
 9. These notes are to be read in conjunction with the associated softworks NBS specification. These notes do not replace the clauses contained within the NBS. The NBS is the priority specification document.



	2	29.01.16	Construction	GB	LH
	1	11.09.14	Tender	GB	LH
NOTE:					
1. Do not scale from this drawing					
2. All setting out, levels and dimensions to be agreed on site.					
3. The dimensions of all materials must be checked on site before being laid out.					
4. This drawing must be read with the relevant specification clauses and detail drawings.					
5. Order of construction and setting out to be agreed on site.					
6. This drawing is copyright protected and may not be reproduced in whole or part without written authority.					
7. All Dimensions are in millimetres unless Otherwise Stated					
 Planit - IE LLP 2 Back Grafton St Altrincham WA14 1DY 0161 928 9281 18 Bowing Green Lane London EC1R 0BW 020 7253 5678					
Project New Anfield					
Client Liverpool Football Club					
Drg title OB - Shrub and herbaceous planting proposals					
Drg nr PL1312.GA.205					
Scale 1:75@A1 Date: 21.07.14 Drawn AT					
Status Construction Revision 1 Checked LH					

5.7 SOILING PLAN - PL1312_GA_200

