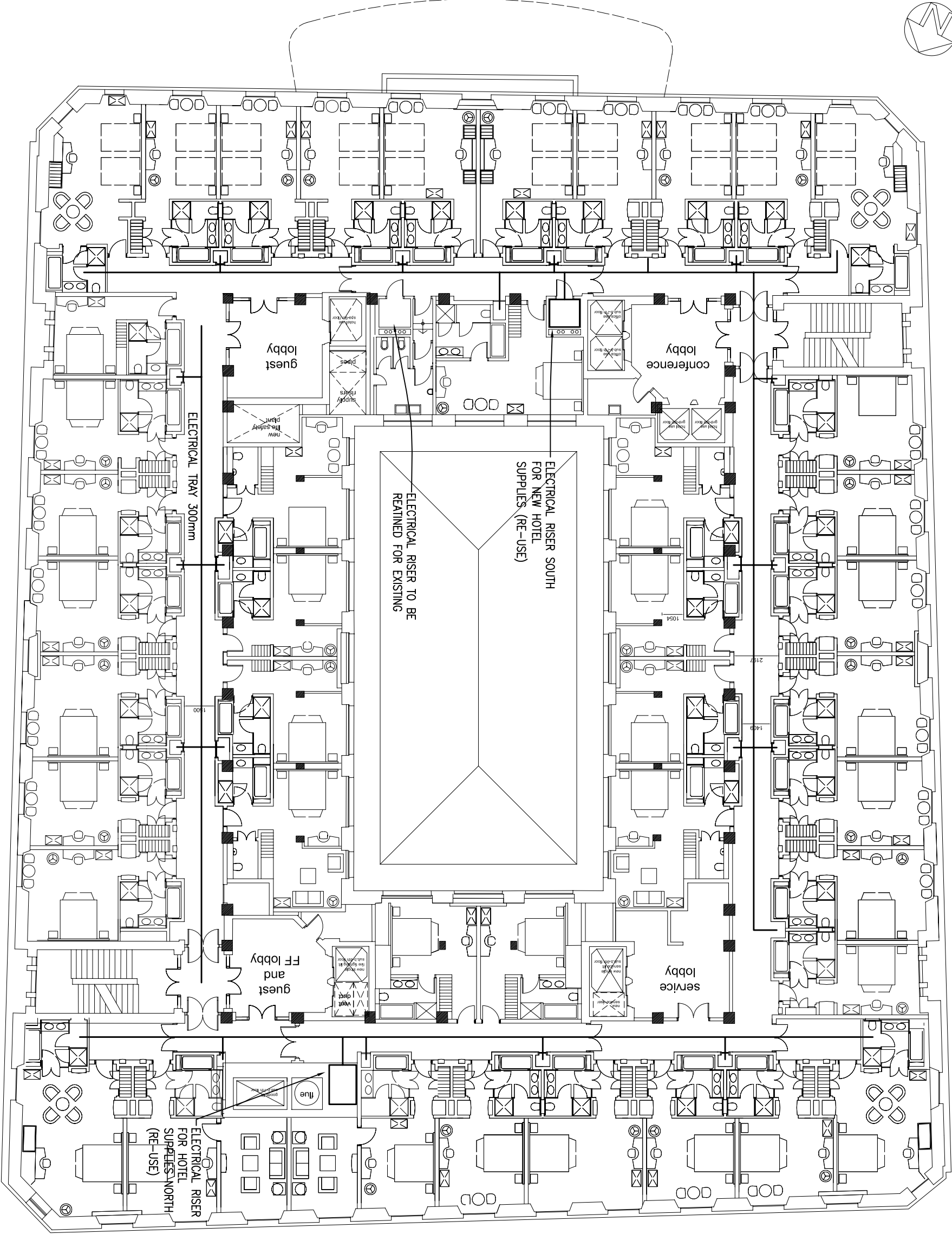




RUMFORD STREET



NOTES.

LEGEND.

| | | | |
|-----|--------------------------------|-------------|------|
| | | | |
| | | | |
| | | | |
| | | | |
| P1 | PRELIMINARY ISSUE. FOR COMMENT | | |
| Rev | Date | Description | Chkd |

HFM Consulting Engineers

1st Floor,
Courtiels House,
38 King Street West,
Manchester
M3 2WZ

Tel: 0161 833 1410
Fax: 0161 833 1412



Also At:
Second Floor, Century Buildings, 31, North John Street, Liverpool, L2 6RG
Tel: 0151 255 2700 Fax: 0151 255 2701

Project
MARTINS BANK BUILDING
LIVERPOOL

Title
SECOND FLOOR INDICATIVE ELECTRICAL LAYOUT

| | | | |
|--------------------|--------|---------|-----------|
| Engineer | PH | Checked | |
| Job No | L/1247 | Date | 04.12.09 |
| Drawing No. | | Rev. | P1 |
| L / 1247 / E / 205 | | Scale | 1:200 @A3 |