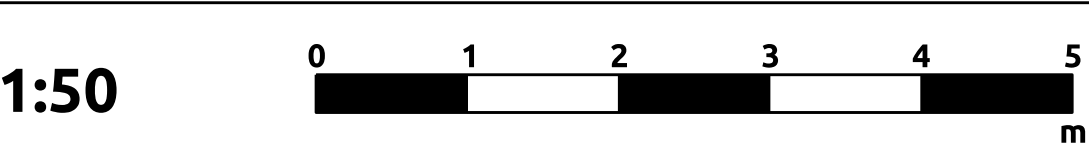
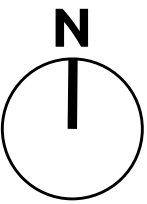




Elements Key


Extent of proposed Alterations



Revision	Description	By	Date
P01	Issued For Planning	ML	20/11/15
P02	Revised in line with planning feedback	ML	24/11/15

Revision	Description	By	Date

Notes:  
DO NOT SCALE. Use figured dimensions only. The contractor is requested to check all dimensions before the work is put in hand. Copyright of this drawing belongs solely to K2 Architects Ltd ©. This drawing must only be used for the purpose for which it is supplied and its contents must not be reproduced for any purpose without written permission. Areas indicated, or areas calculated from this drawing should be used for valuation purposes or as the basis for development contracts. K2 Architects is a limited company registered in England and Wales. Number 603 3123



Compton House, 18 School Lane, Liverpool, L1 3BT  
T: 0151 706 9560 W: www.k2architects.co.uk

Drawn	ML	Project	South John Street, Liverpool One, L1 8BU
Date	NOV 2015		Units 48- 50
Checked	KH	Drg Title	Existing Elevation
Date	NOV 2015		
Scale	1:50 @ A1	Drg No.	K2_240_(0-)_A201
Status	Planning	Rev	P02