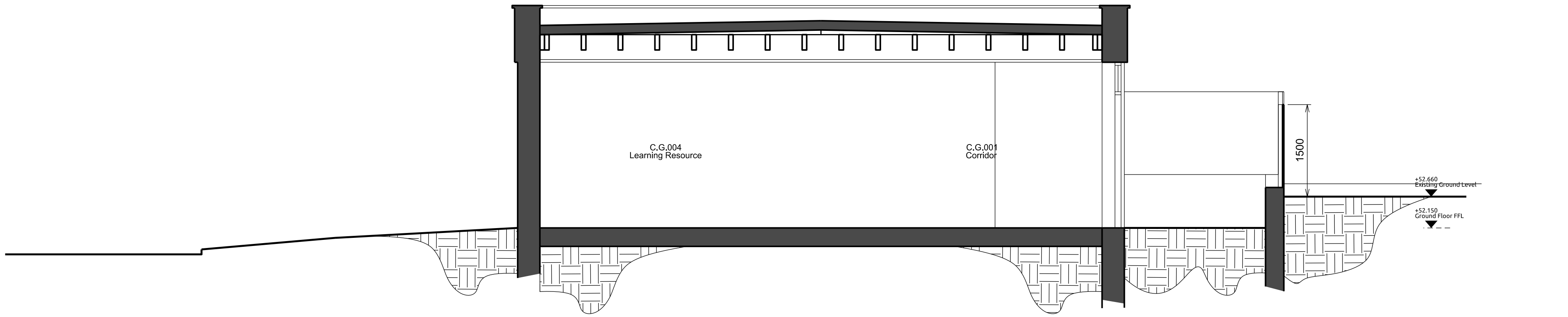


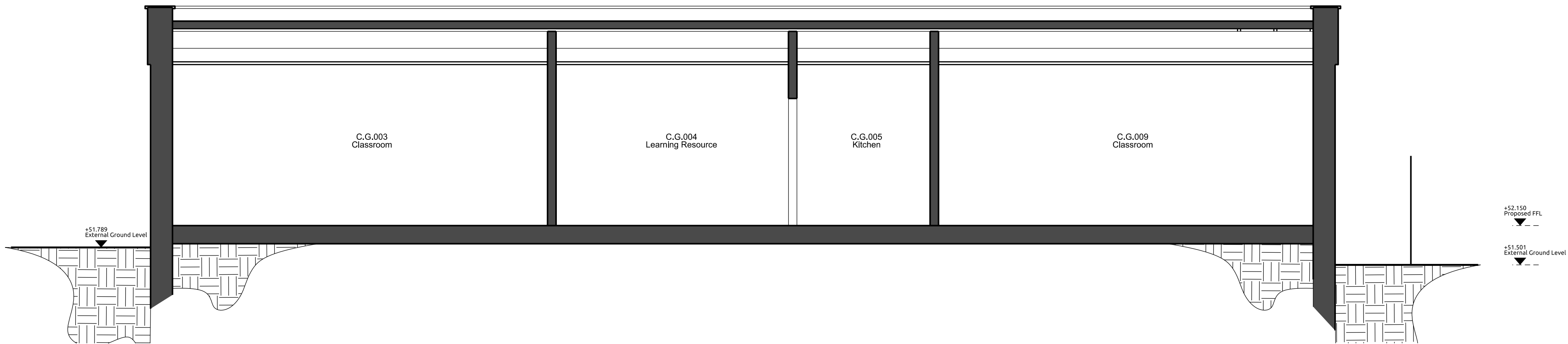
Section 1-1



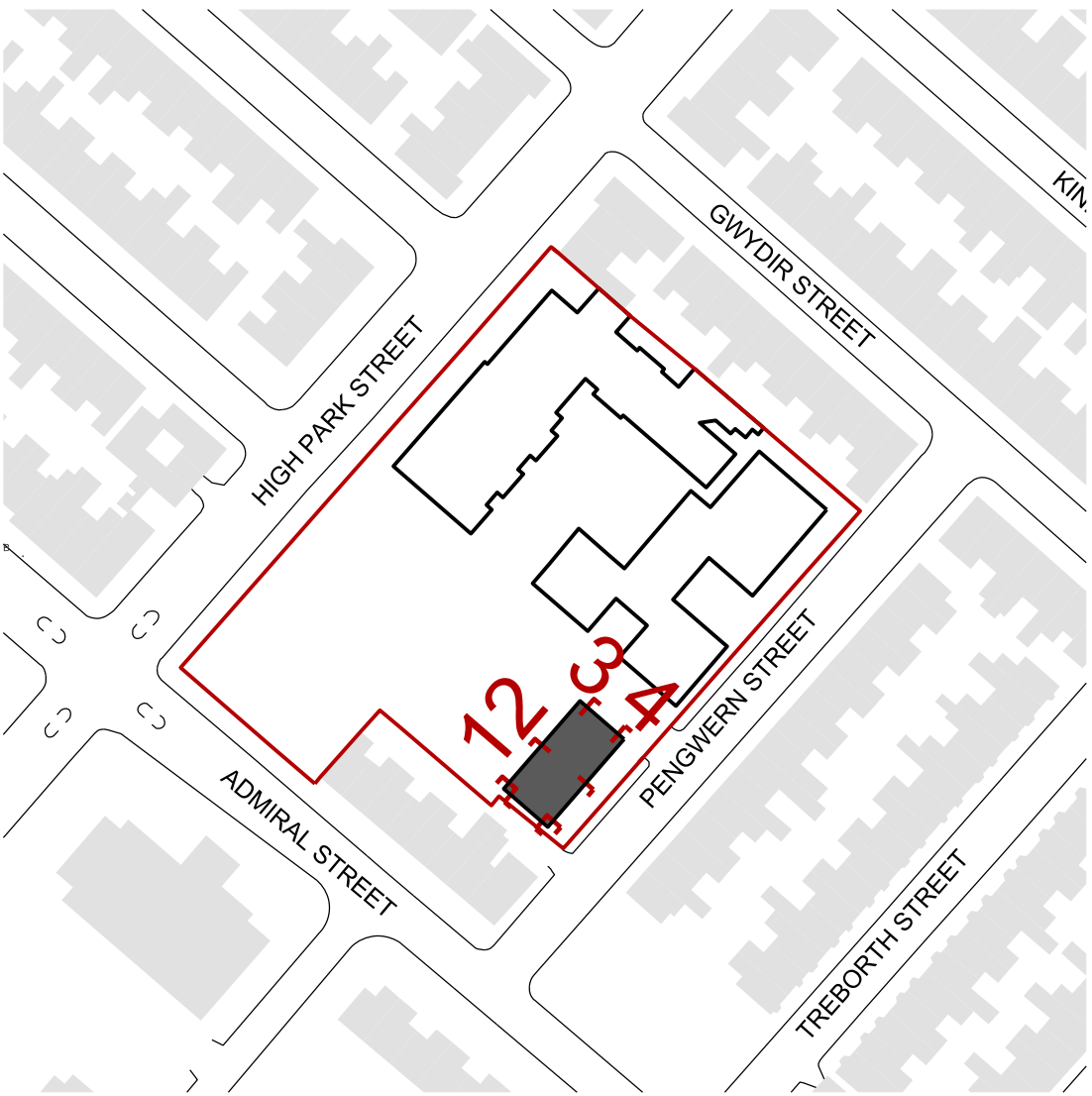
Section 2-2



Section 3-3



Section 4-4



Proposed Section Key Plan 1:1250

1:50



Revision	Description	By	Date
P01	Issued for Planning	CD	17/08/15

Revision	Description	By	Date

Notes:
DO NOT SCALE. Use figured dimensions only. The contractor is requested to check all dimensions before the work is put in hand. Copyright of this drawing belongs solely to K2 Architects Ltd ©. This drawing must only be used for the purpose for which it is supplied and its contents must not be reproduced for any purpose without written permission. Areas indicated, or areas calculated from this drawing should be used for valuation purposes or as the basis for development contracts. K2 Architects is a limited company registered in England and Wales. Number 603 3123

k2architects

Compton House, 18 School Lane, Liverpool, L1 3BT
T: 0151 706 9560 W: www.k2architects.co.uk

Drawn	CD	Project	St Silas C of E Primary School
Date	July 2015		High Park Street
Checked			Liverpool, L8 3TR
Date	July 2015	Drg Title	New Build
			Proposed Sections
Scale	1:50 @ A1	Drg No.	K2_159_(0-)_A650
Status	Planning		Rev P01