

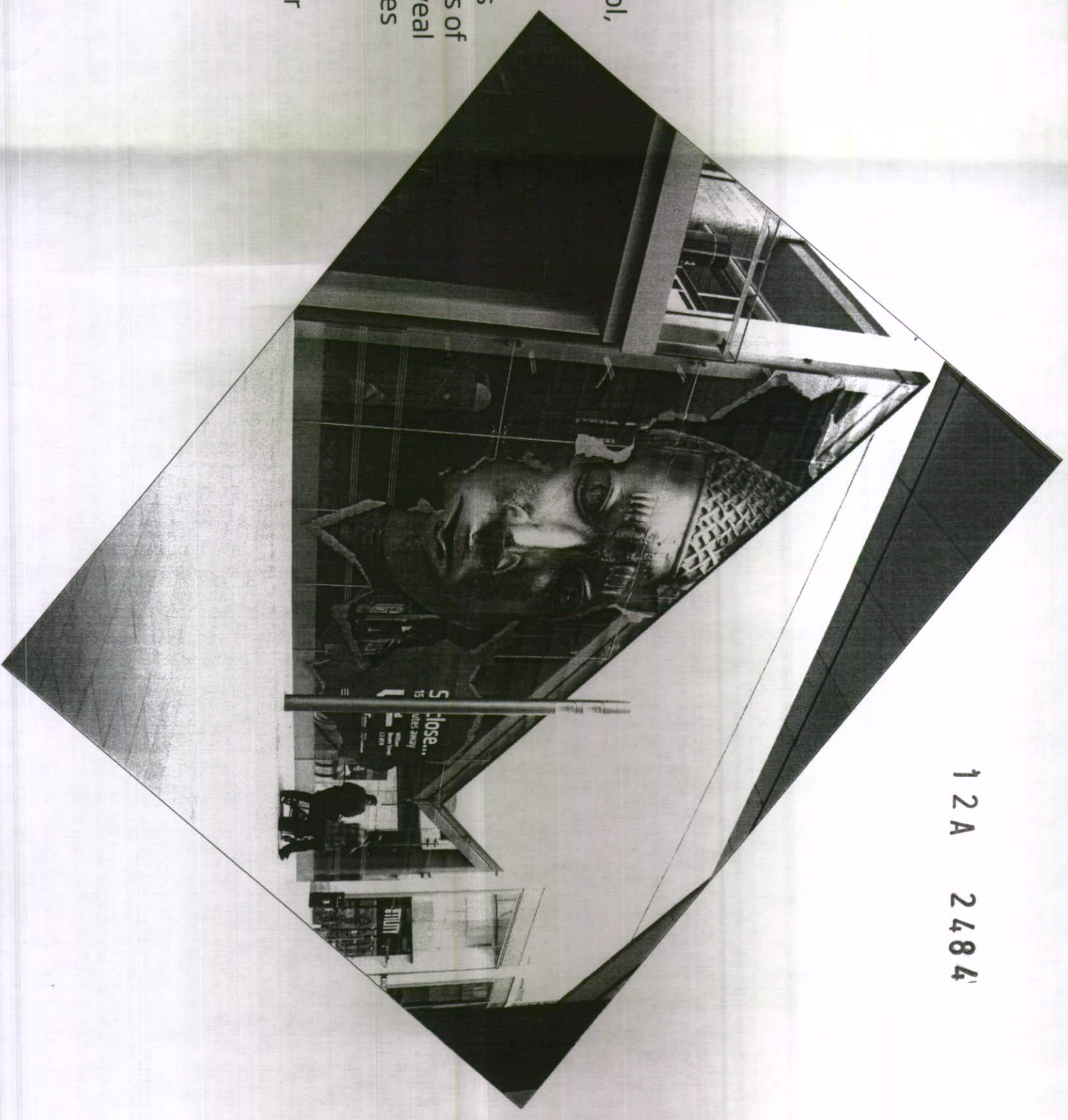
Through the Wall

Through the Wall is a project created by National Museums Liverpool.

It involved working with partners such as ACC, Tate Liverpool, the Bluecoat, FACT, MerseyTravel and Liverpool ONE, to roll out the project over several city centre locations.

At Liverpool ONE we installed seven, large, cut-out, graphics in the 'trompe l'œil' or 'trick of the eye' style to create a series of murals that 'burst through' various windows and walls to reveal the quality and wealth of the cultural offer available in venues across the city.

This submission is to extend the run of the existing murals for a further period.



Proposal for extension of existing signage at Liverpool ONE - September 2012

Existing location 1

Chavasse Park lift

Type:

Fascia sign flush to existing glazing

Material:

Exterior grade, self adhesive vinyl
applied directly to exterior of glass

Size:

4.5m x 5m approx

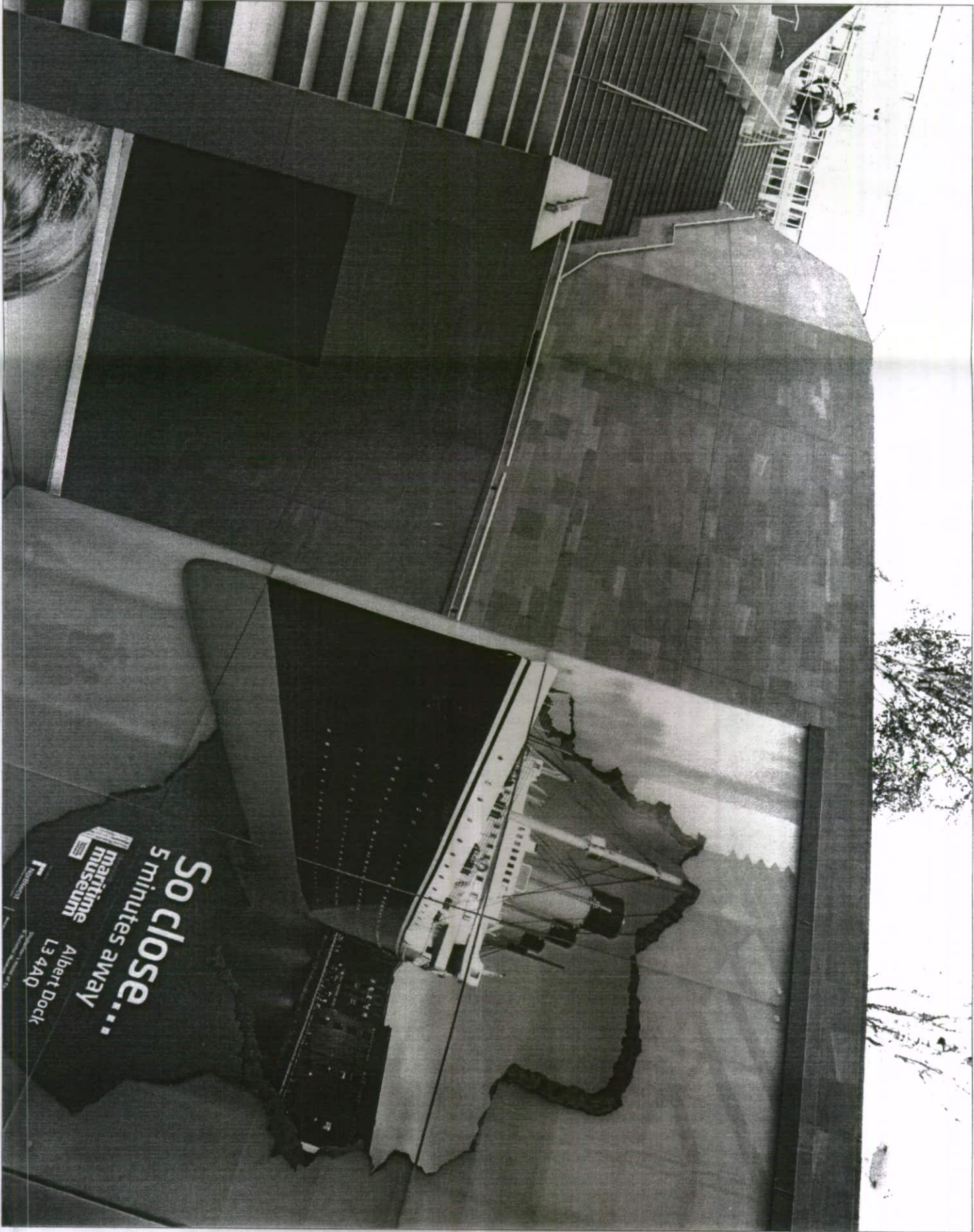
Height from ground:

3m approx

Image:

Merseyside Maritime Museum / Titanic

Sign to be removable without causing
damage to the glazing



Existing location 2

**Chavasse Park to
Paradise Place route**

Type:

Fascia sign flush to existing glazing

Material:

Exterior grade, self adhesive vinyl
applied directly to exterior of glass

Size:

7m x 10m approx

Height from ground:

0.10m approx

Image:

World Museum / Queen Mother Bronze

Sign to be removable without causing
damage to the glazing



Existing location 3

**South John Street
glass wall and ceiling by
escalator to upper level**

Type:

Fascia sign flush to existing glazing

Material:

Exterior grade, self adhesive vinyl
applied directly to exterior of glass

Size:

9m x 8m approx

Height from ground:

0.75m approx

Image:

World Museum / Dinosaur Skeleton

Sign to be removable without causing
damage to the glazing



Existing location 4

Information Centre window

Type:

Fascia sign flush to existing glazing

Material:

Exterior grade, self adhesive vinyl
applied directly to exterior of glass

Size:

5.5m x 2.7m approx

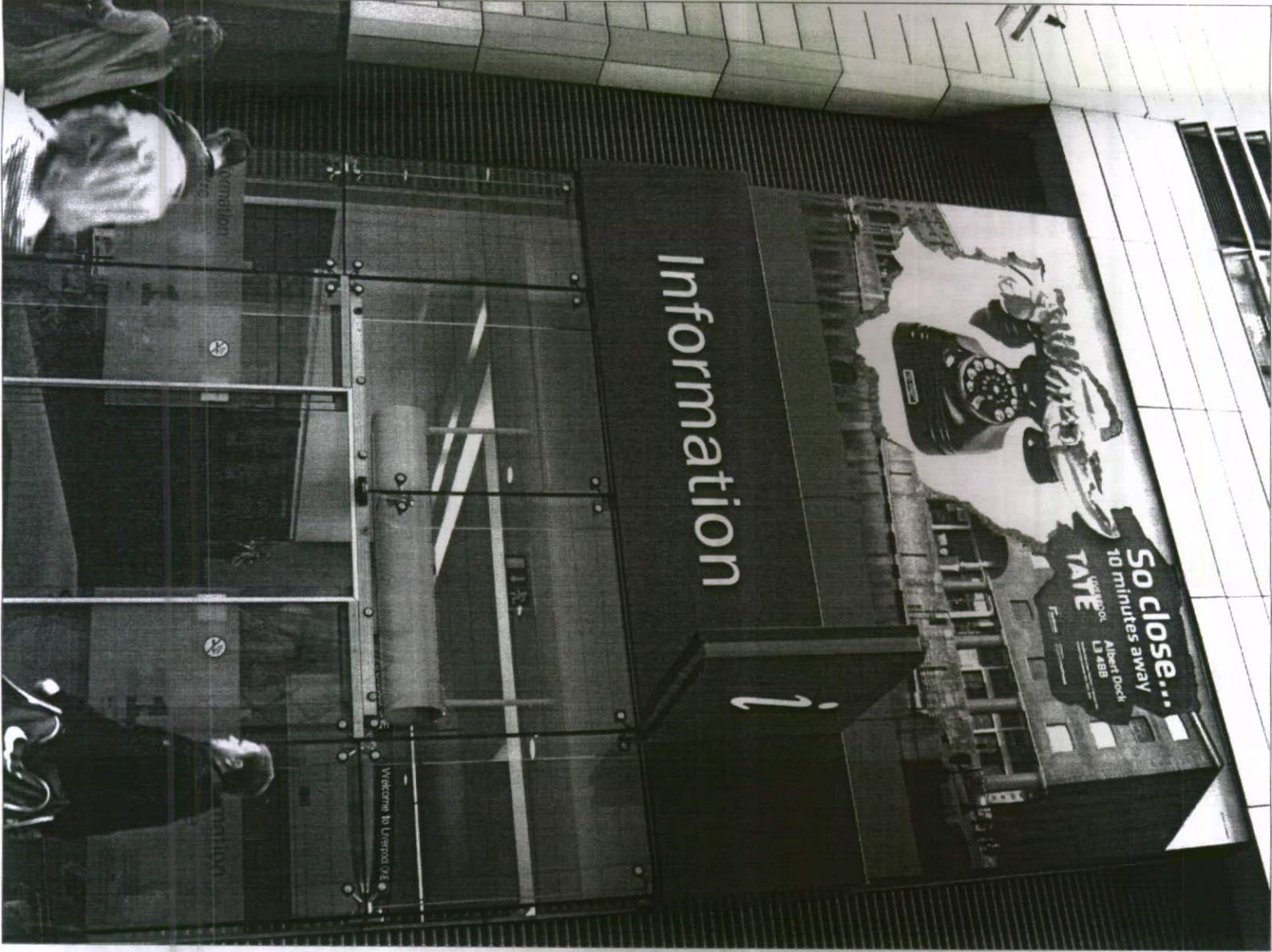
Height from ground:

4m approx

Image:

Tate / Salvador Dali *Lobster Telephone*

Sign to be removable without causing
damage to the glazing



Existing location 5

Church St Arcade

Type:

Fascia sign flush to existing painted wall. Sign fixed at minimum number of points in joints of painted panels of existing wall

Material:

Exterior grade, self adhesive vinyl applied directly to pre-fitted 5mm thick Aluminium Composite Panels

Size:

4.5m x 6.5m approx

Height from ground:

2.2m approx

Image:

Walker Art Gallery / Holbein Henry VIII

Sign to be removable - contractor make good joints and painted surface



Existing location 6

School Lane

Type:

Fascia sign flush to existing brick wall.
Sign fixed at minimum number of points in lines between bricks.

Material:

Exterior grade, self adhesive vinyl
applied directly to pre-fitted 5mm thick
Aluminium Composite Panels

Size:

7m x 8.5m approx

Height from ground:

0.5m approx

Image:

The Bluecoat / Arabcity-car

Sign to be removable - contractor make
good fixing locations between bricks



Existing location 7

Church Street Arcade

Type:

Fascia sign flush to existing stone clad wall.
Sign fixed with double sided adhesive tape (CPS01).

Material:

Exterior grade, self adhesive vinyl applied directly to pre-fitted 3mm thick Composite Aluminium Panels.

Size:

2.6m x 3m approx

Height from ground:

0.5m approx

Image:

FACT

Sign to be removable - contractor to make good / clean wall surface



Plan of Liverpool ONE showing proposed locations

Scale 1:2500 at A3



12A 2484

28 SEP 2012

4245 ASI