

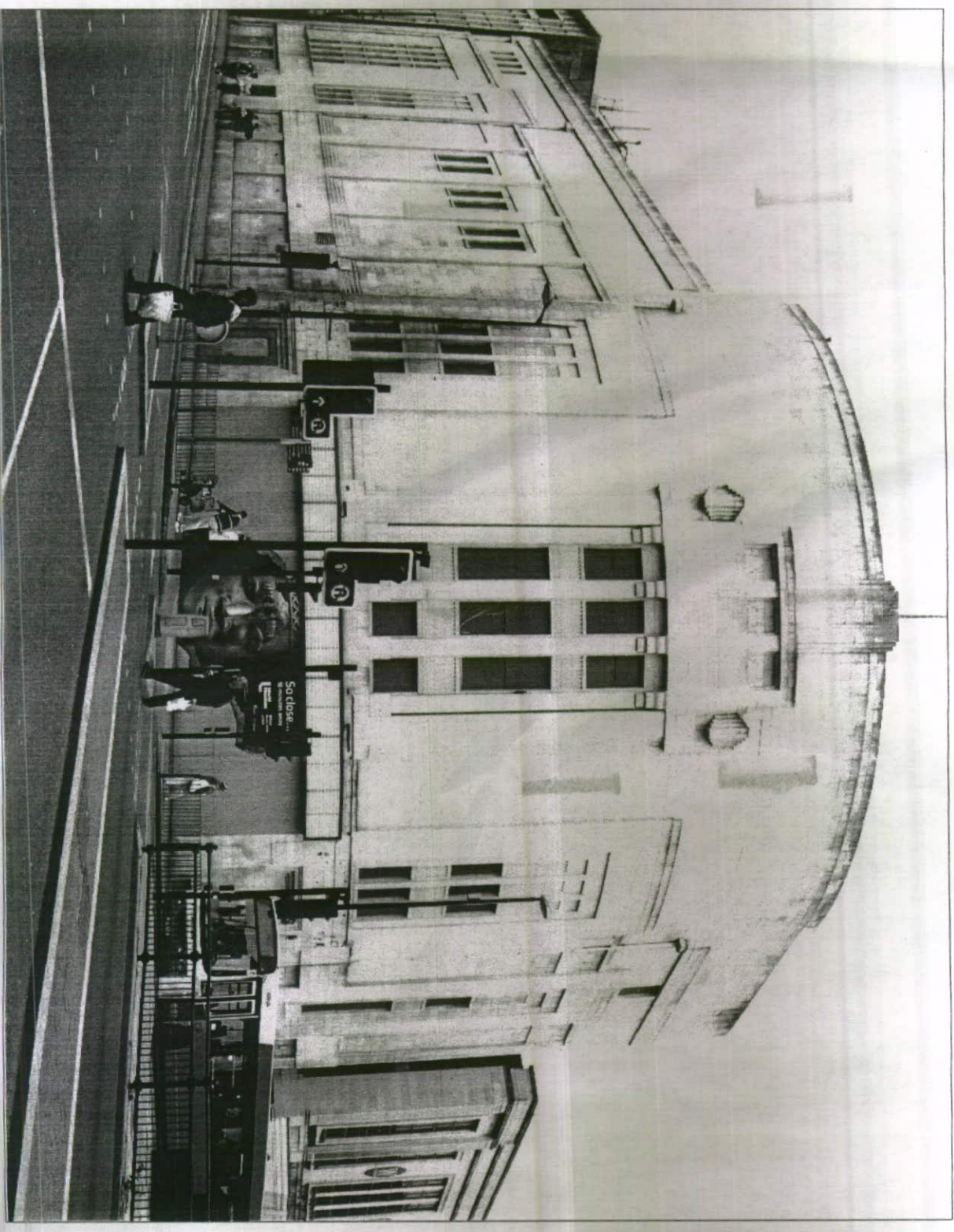
# Through the Wall

Through the Wall is a project created by National Museums Liverpool.

It has involved working with partners such as Liverpool Arena and Convention Centre, Tate Liverpool, the Bluecoat, FACT, MerseyTravel, Liverpool ONE, and other city centre partners.

The project involved the production of large, graphics in the 'trompe l'œil' or 'trick of the eye' style to create a series of murals that 'burst through' various windows and walls to reveal the quality and wealth of the cultural offer available in venues across the city.

This submission details the application to extend the run of one installation on the boarded up entrance of the former ABC Cinema on Lime Street, Liverpool.



**Proposal to extend the consent for a sign at the ABC Cinema, Lime Street - September 2012**



Existing location

ABC Cinema, Lime Street

Type:

Fascia sign flush to existing temporary hoarding.

Material:

Exterior grade, self adhesive vinyl applied directly to pre-fitted 3mm thick Composite Aluminium Panels.

Size:

7m x 3m approx

Height from ground:

0.1m approx

Image:

World Museum / Queen Mother Bronze

Sign to be removable without damage to hoarding





Scale 1:1250



12A 2484

28 SEP 2012

