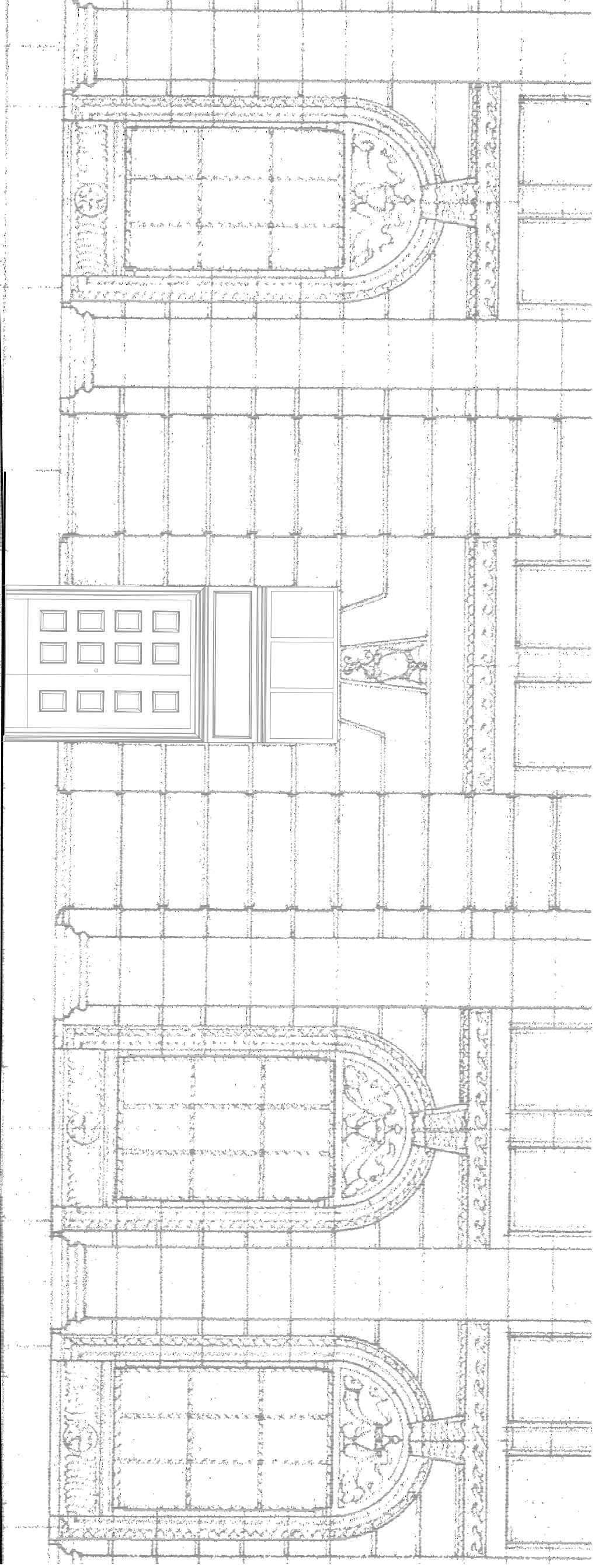
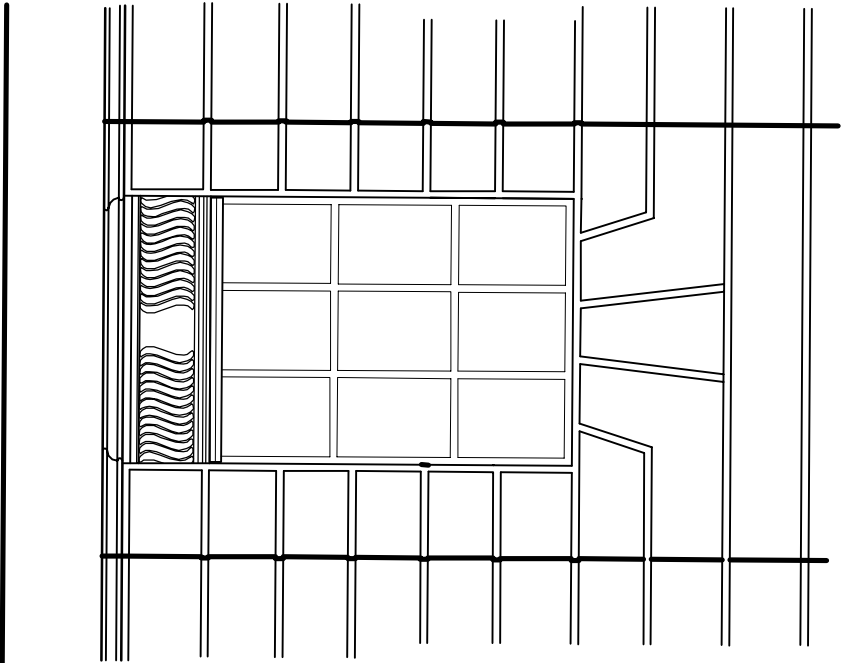


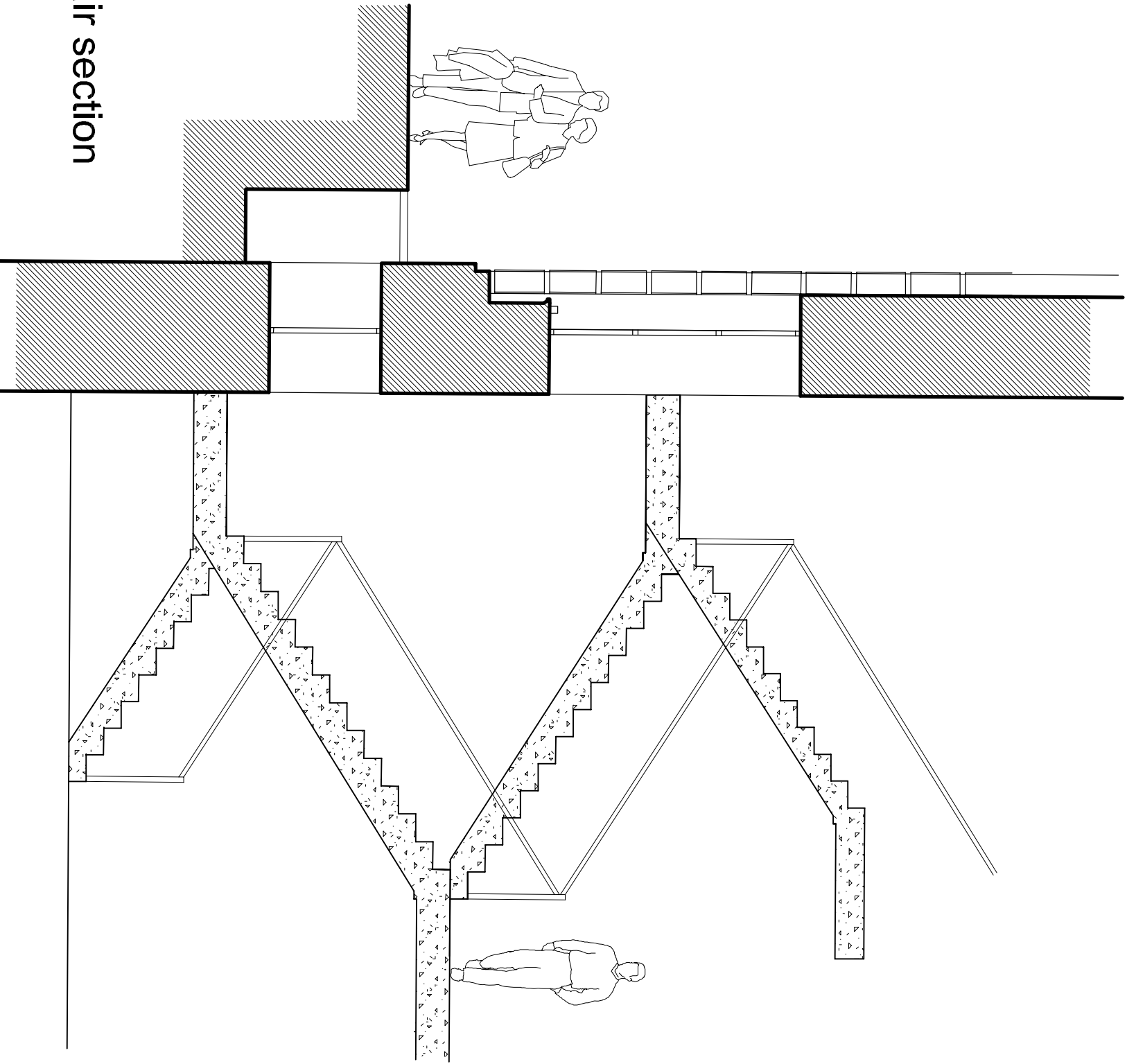
Existing part elevation



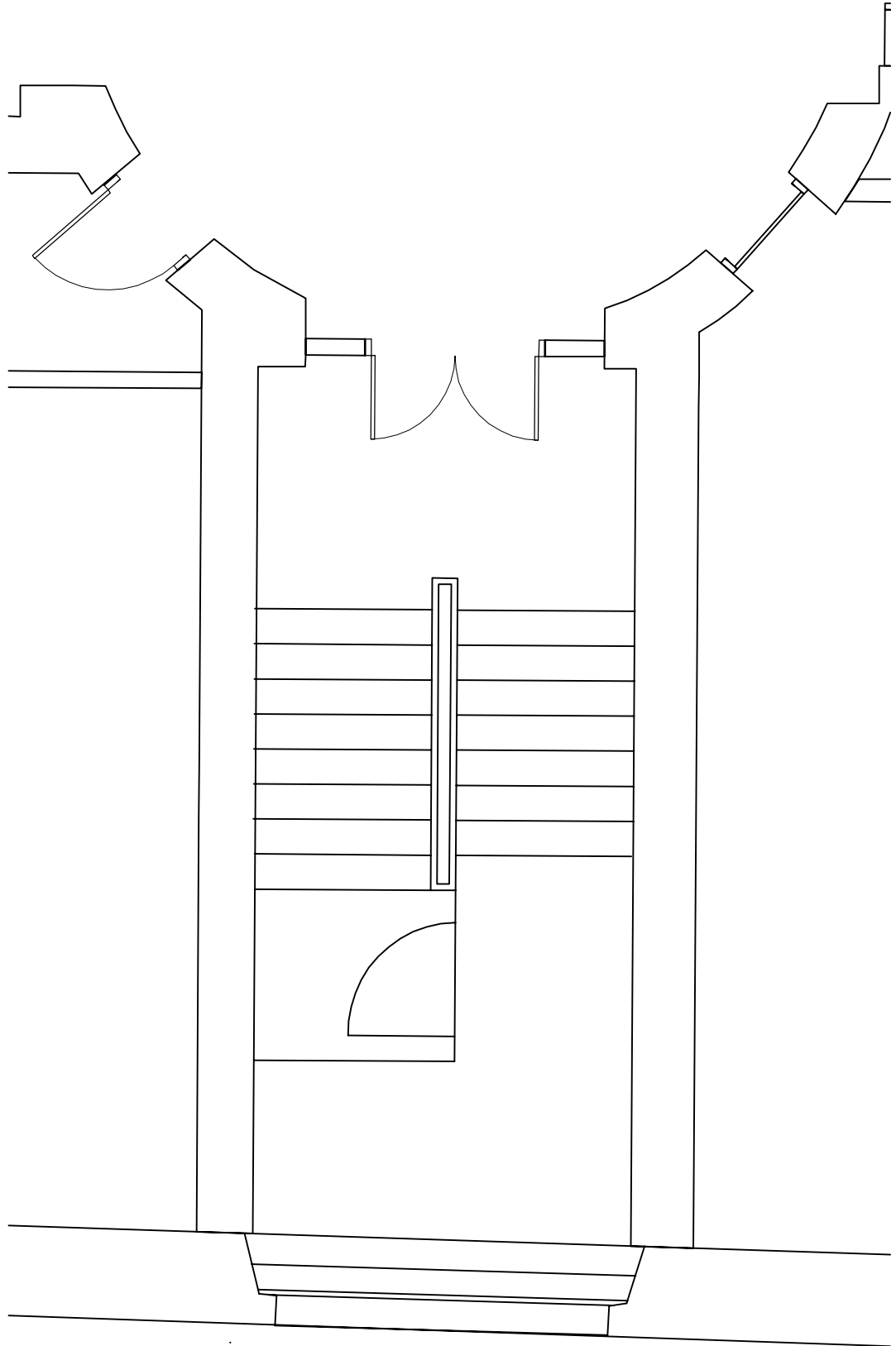
Proposed part elevation



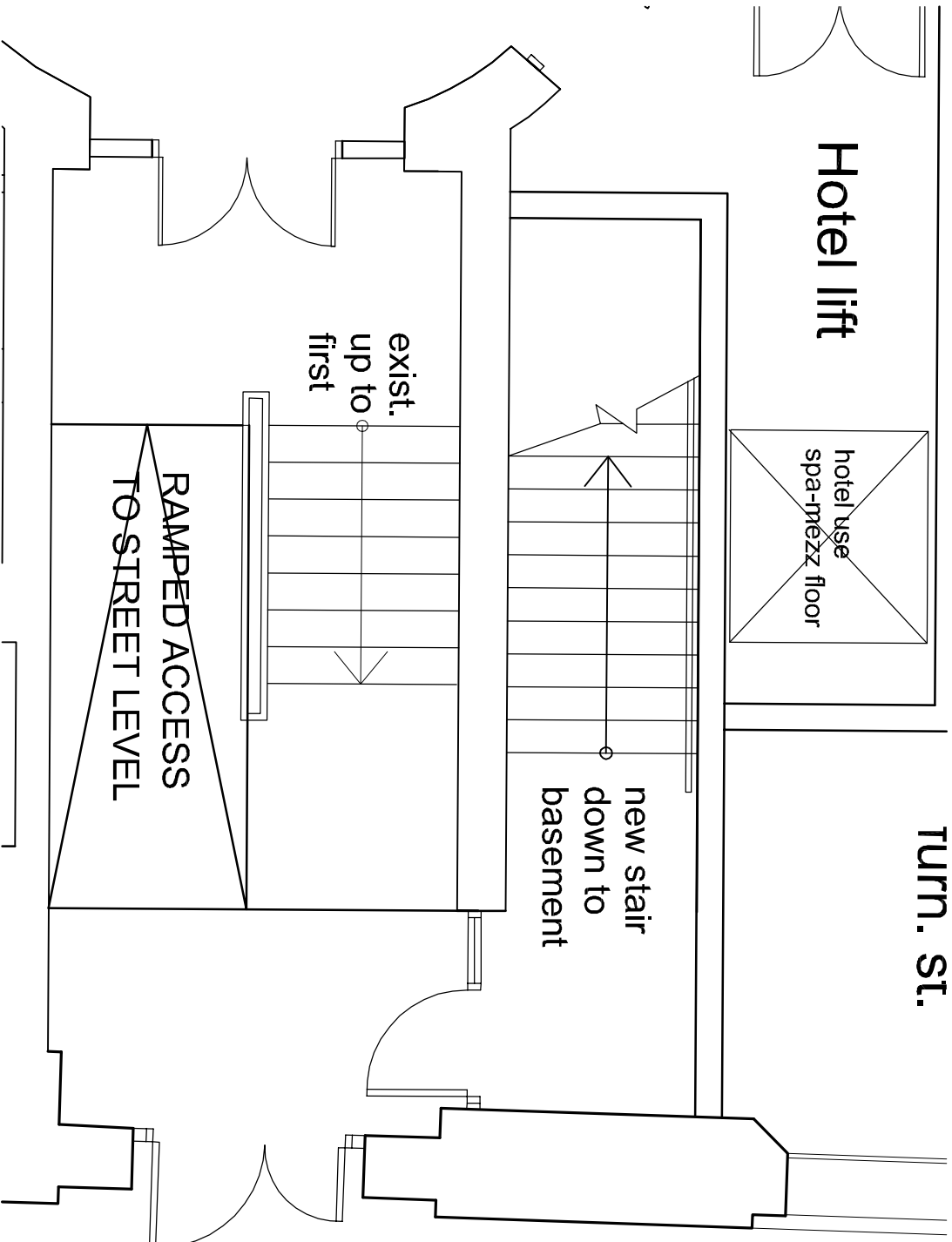
Existing window/stair section



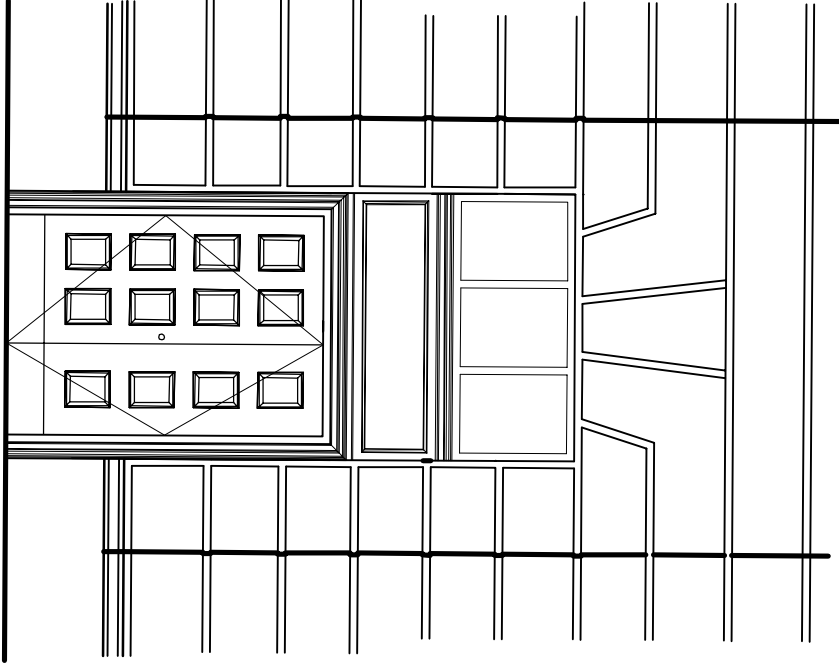
Proposed New Exchange Street West Entrance



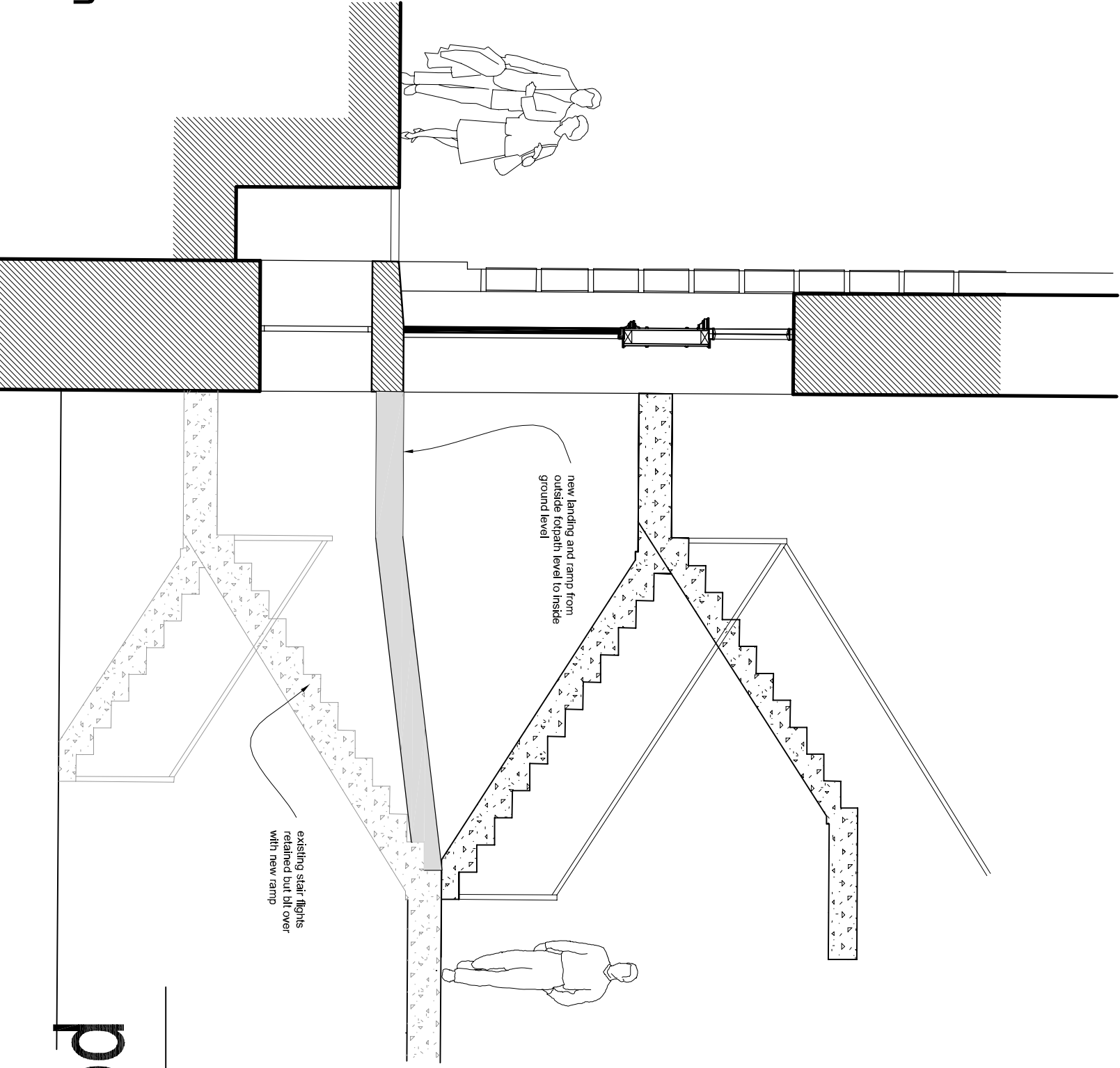
Existing part plan



Proposed part plan



Proposed door/stair section



A second DDA access has been formed in the stairwell to **Exchange Street West**, the one that presently does not discharge to street level. By the addition of a new half landing and the re-routing of the existing stairs to the lower ground floor, a Fire Escape route has been created from the lower ground floor, and a secondary DDA compliant access formed to the bars and restaurant. This DDA entrance has the added advantage that it is formed using a ramp, and is not reliant on mains power and can therefore be used as a back up to the platform lift in the event of a power failure. External alterations to the building to form this entrance have been kept to a minimum, and the formation of the new opening is by simply removing the cill in an existing opening. The formation of this new opening works well in the context of the Exchange Street elevation as the new opening is symmetrical with the existing office entrance at the right hand side of the building.

