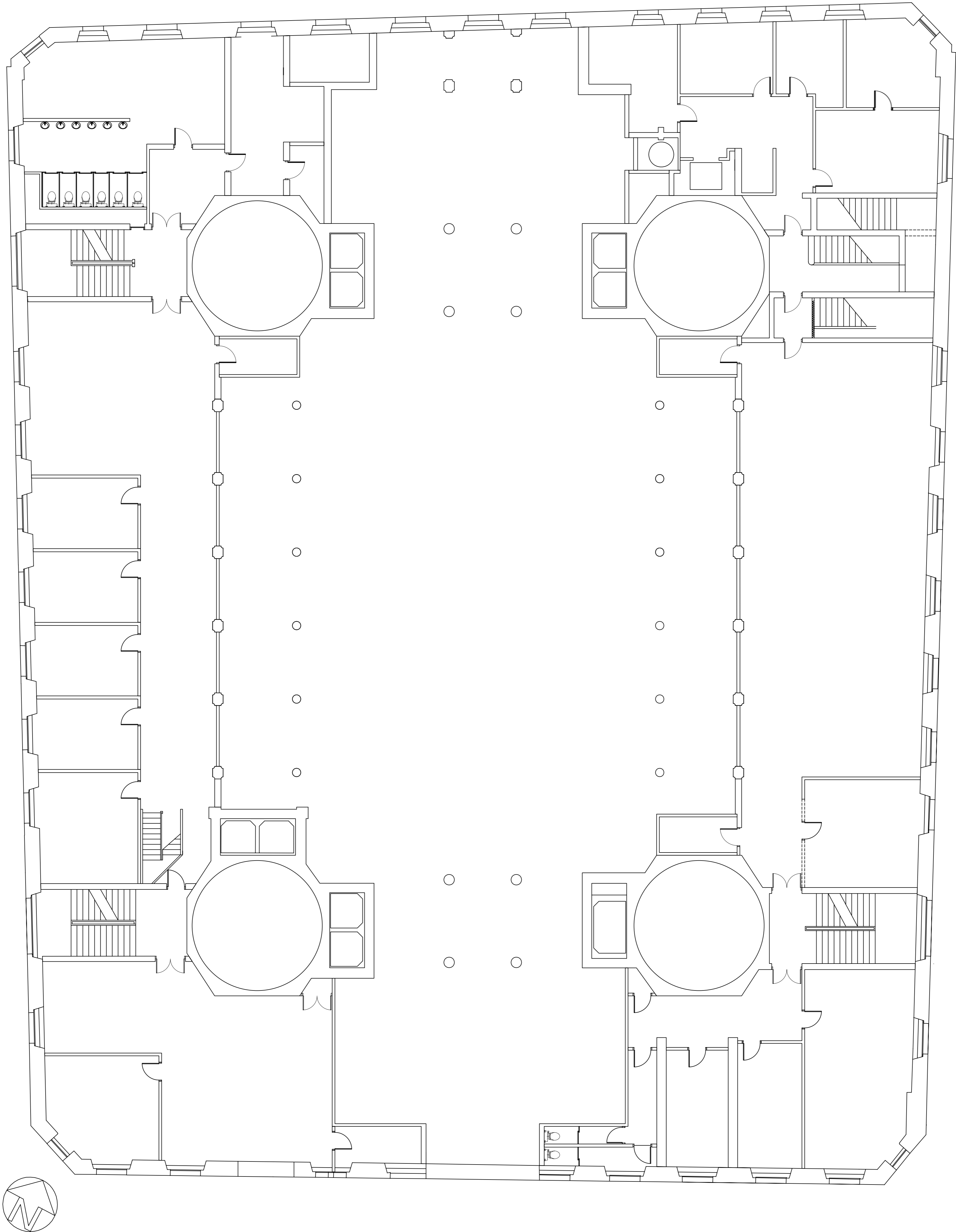


RUMFORD STREET

EXCHANGE PASSAGE WEST

EXCHANGE STREET WEST

WATER STREET



Existing
mezzanine floor plan

<div><div><div>povall</div><div>worthington</div></div><div><div>5 PILOT'S VIEW HERON ROAD BELFAST BT3 9LE</div><div>028 90 45 01 05 028 90 45 01 04 pw@povall.co.uk www.povallworthington.com</div></div><div><div>our services</div><div>our people</div></div></div>		rev : date : notes		date	
		client Castlewood Property Management Ltd		28.07.2009	
		job title Martins Hotel Liverpool		drawn by GMc	
		drawing title Existing Mezzanine Floor Plan Planning		scale 1:100 @ A1	
		project no. 8112	drawing no. (00) 103	revision	