

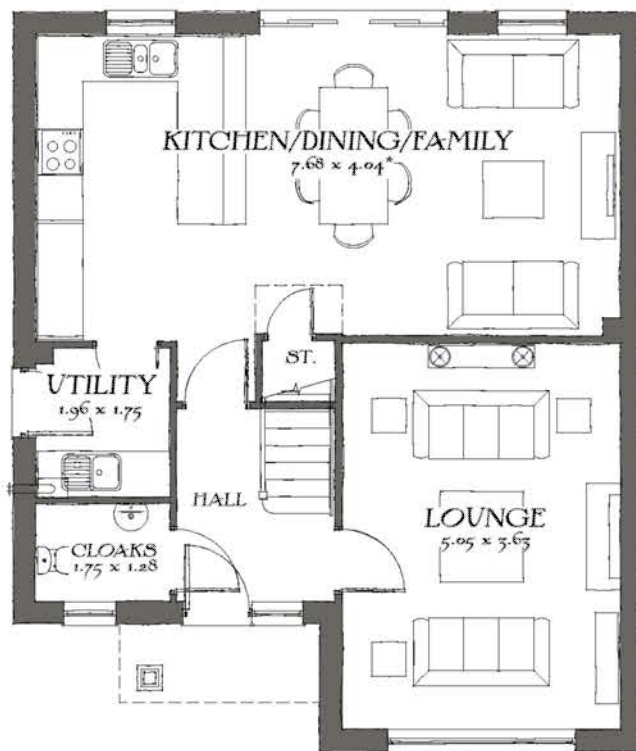
First Floor



Front Elevation



Side Elevation



Ground Floor



Rear Elevation



Side Elevation



The Cambridge

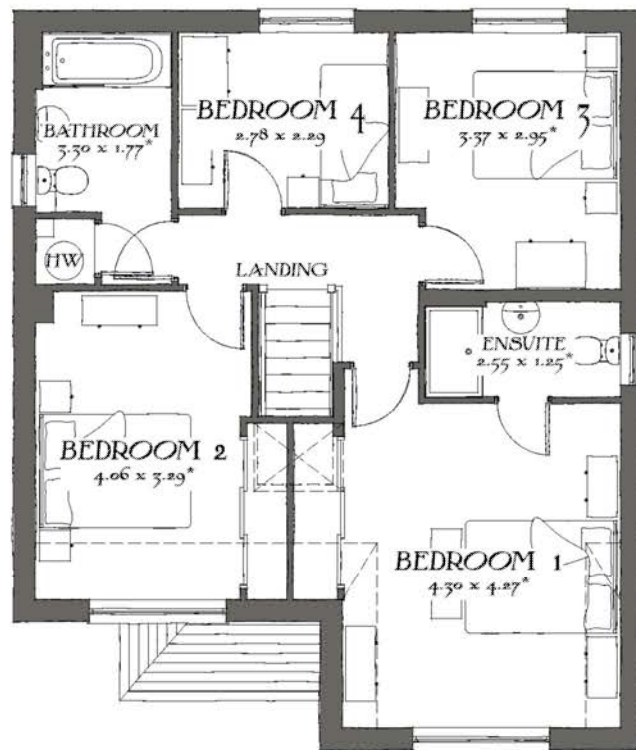
Heritage Collection
"2014 Edition"

EF Series Render (A1)
1382sqft 128.41m²
DATE: April 2014
REV:

EF_CAMB_DM.1.0

Drawing scale 1:100 @ A3
Bedroom dimensions taken into wardrobe recess
* Maximum Dimension





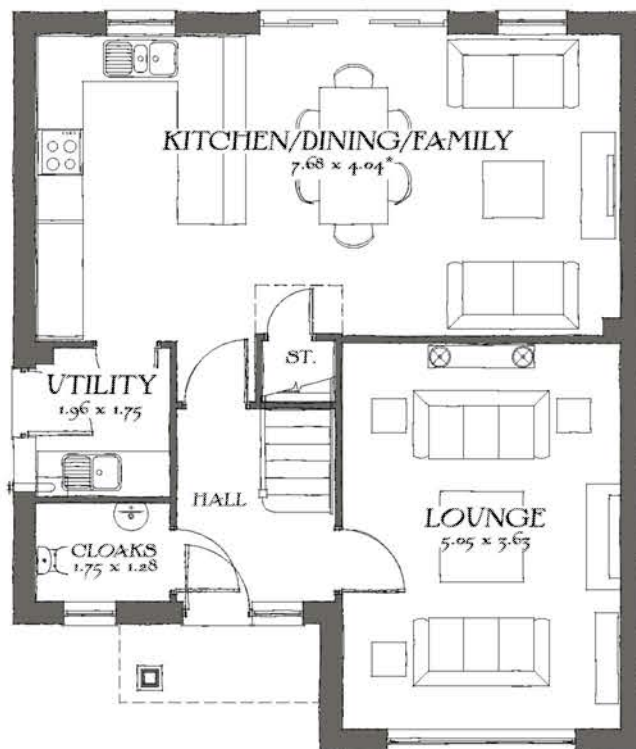
First Floor



Front Elevation



Side Elevation



Ground Floor



Rear Elevation



Side Elevation



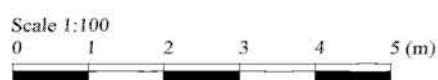
The Cambridge

Heritage Collection
"2014 Edition"

EF Series Brick (B1)
1382sqft 128.41m²
DATE: April 2014
REV:

EF_CAMB_DM.1.0

Drawing scale 1:100 @ A3
Bedroom dimensions taken into wardrobe recess
* Maximum Dimension





Front Elevation



Side Elevation



Rear Elevation



Side Elevation

The Canterbury

Heritage Collection
"2014 Edition"

EF Series Brick (B1)

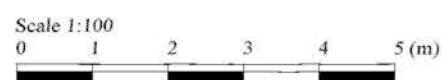
1410sqft 130.97m²

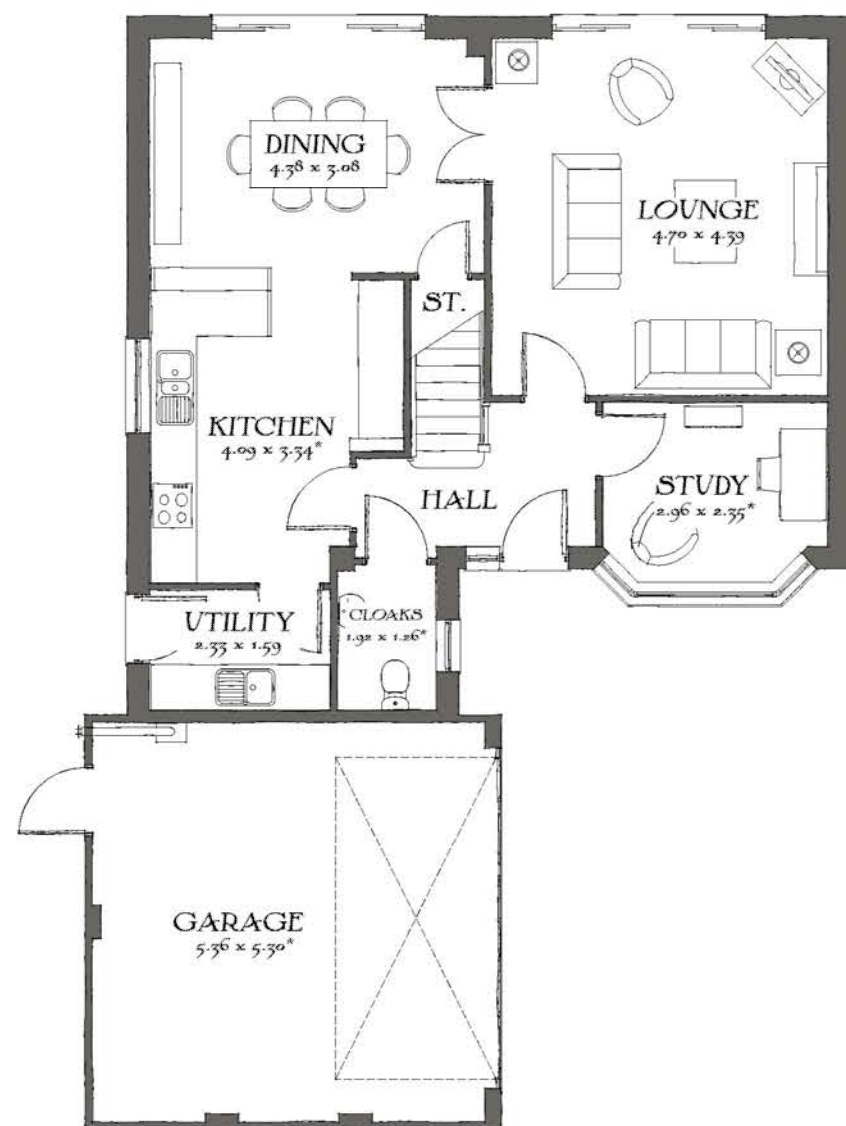
DATE: April 2014

REV:

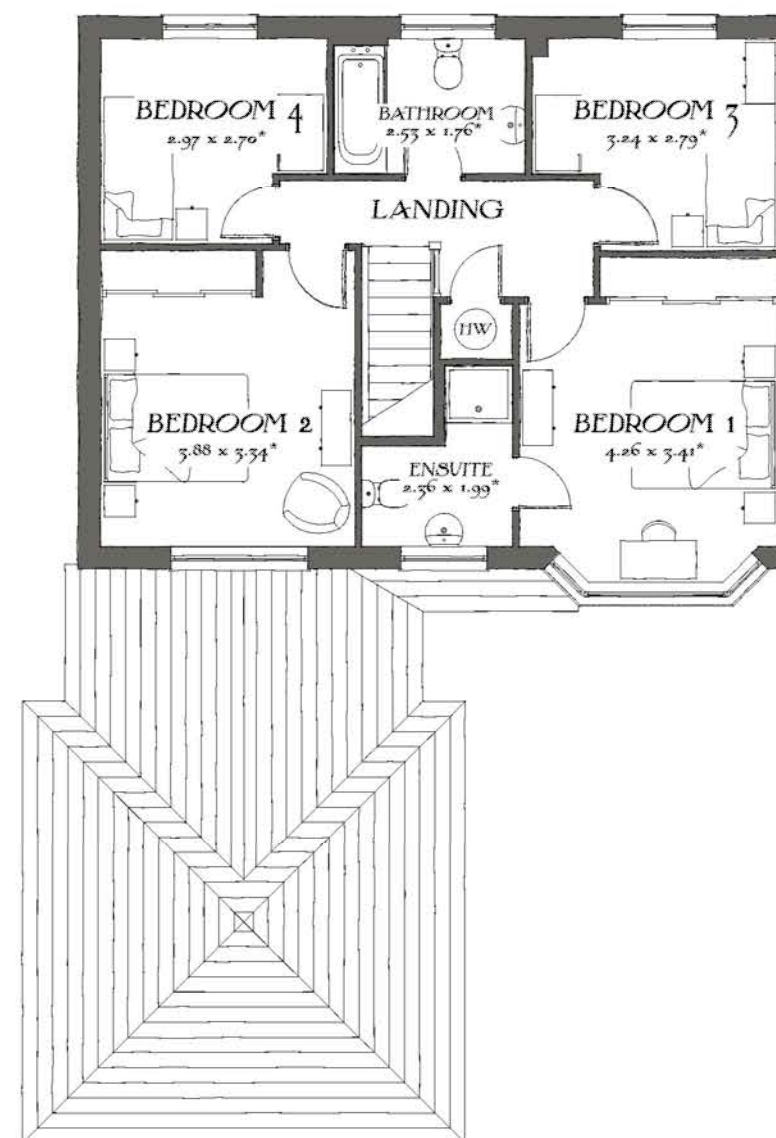
EF_CANT_DM.1.0

Drawing Scale 1:100 @ A3





Ground Floor



First Floor

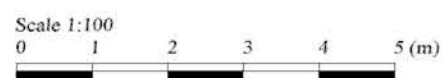
The Canterbury

Heritage Collection
"2014 Edition"

EF Series
1410sqft 130.97m²
DATE: April 2014
REV:

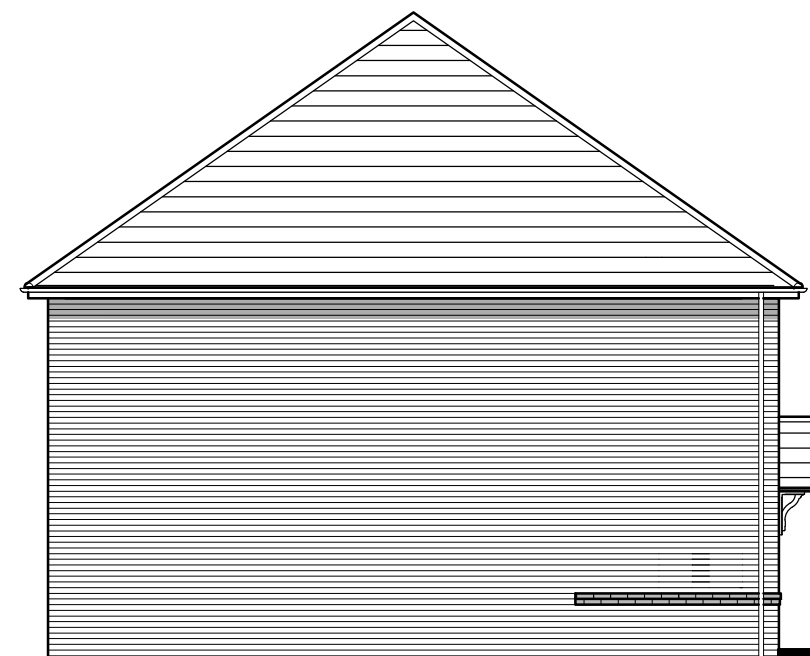
EF_CANT_DM.1.0

Drawing Scale 1:100 @ A3
Bedroom dimensions taken into wardrobe recess
* Maximum Dimension





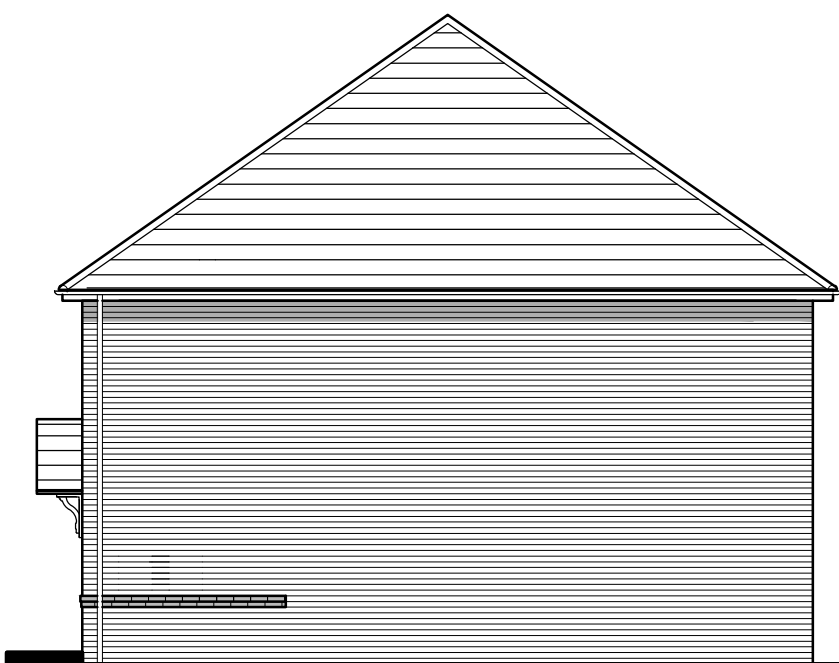
Front Elevation



Side Elevation

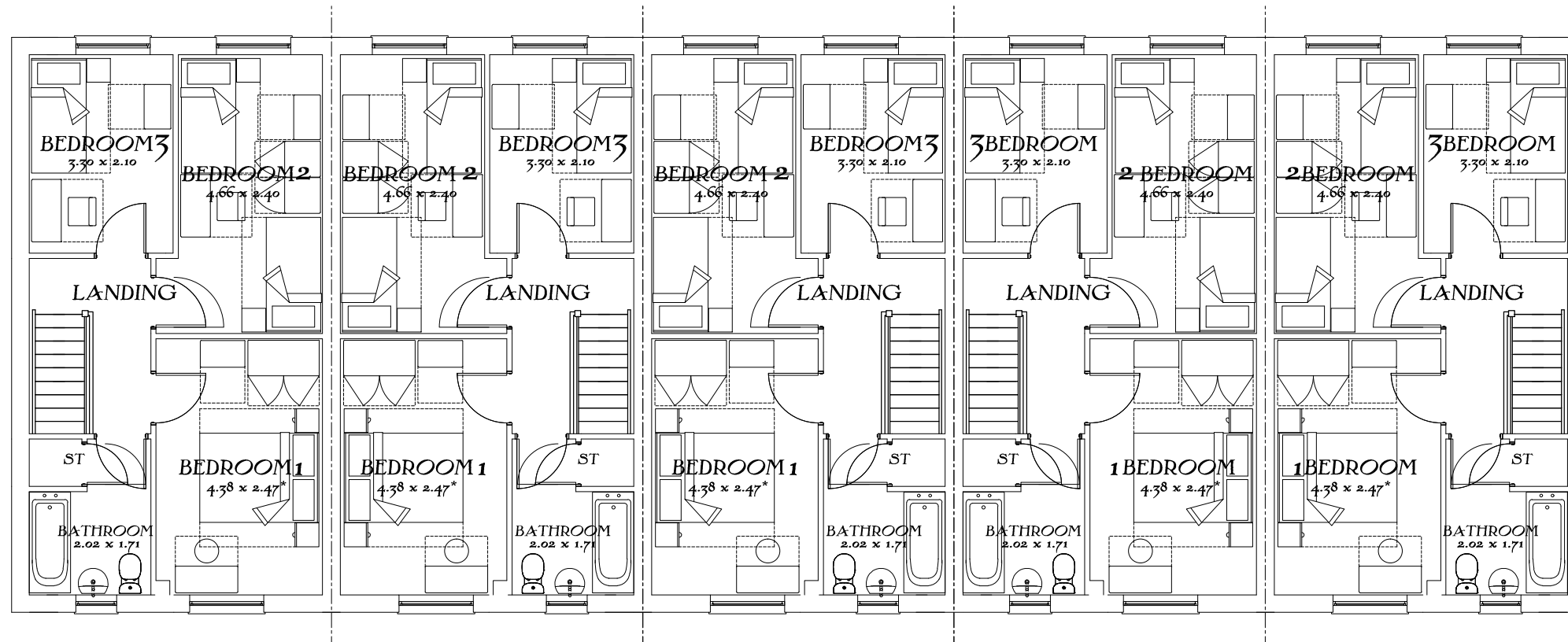


Rear Elevation

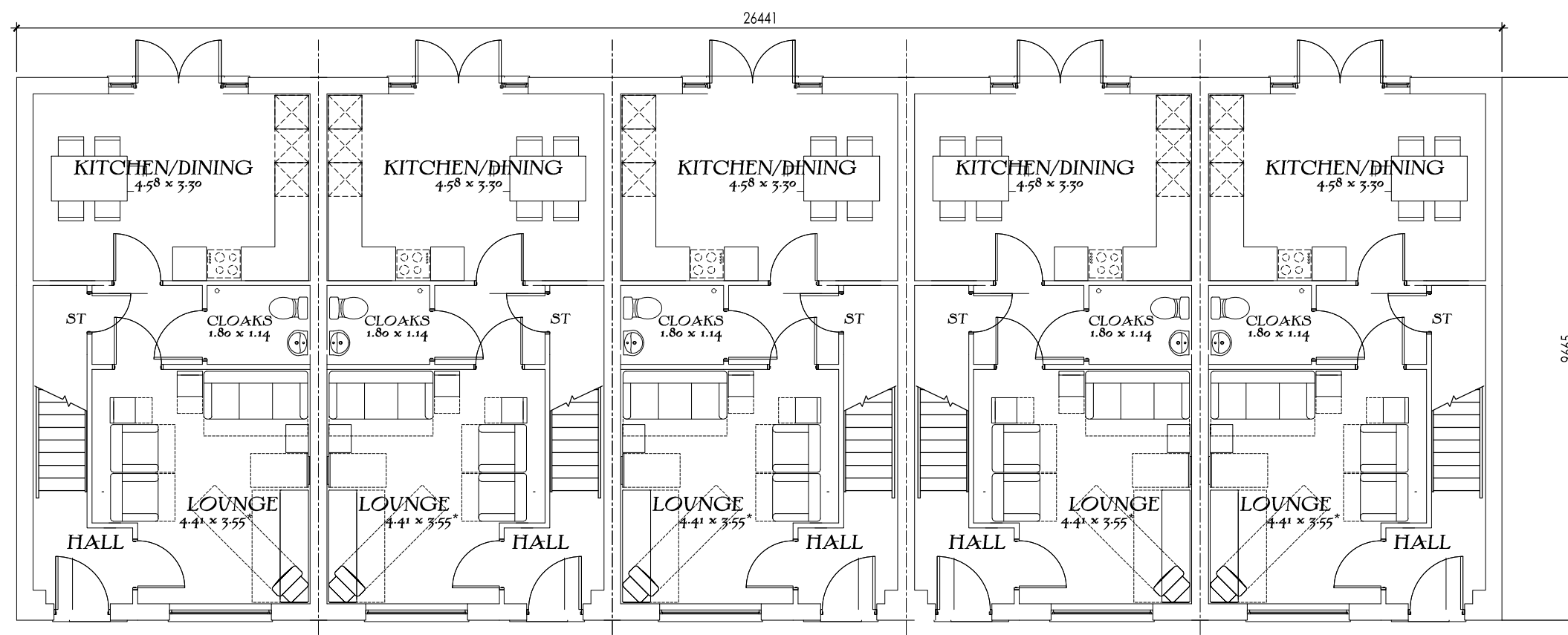


Side Elevation

The Dart
Brick Elevation
Lifetime Homes
DATE: Dec 2015
Drawing scale 1:100 @ A3

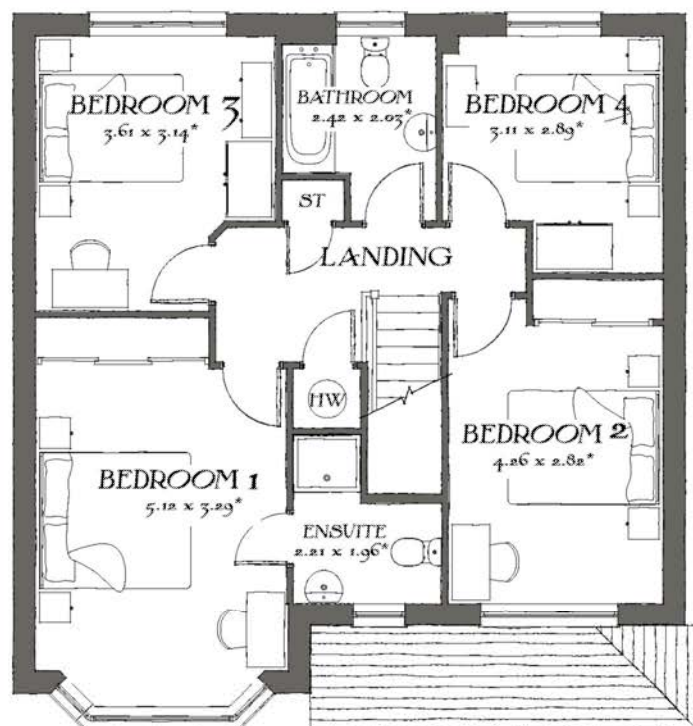


First Floor Plan



Ground Floor Plan

The Dart
 5 Block Floor Plans
 Lifetime Homes
 DATE: Dec 2015
 Drawing scale 1:100 @ A3



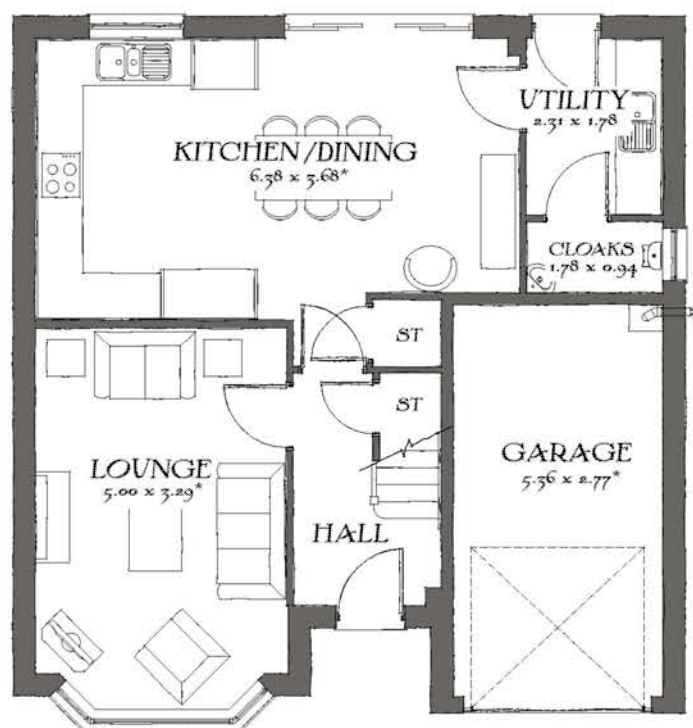
First Floor



Front Elevation



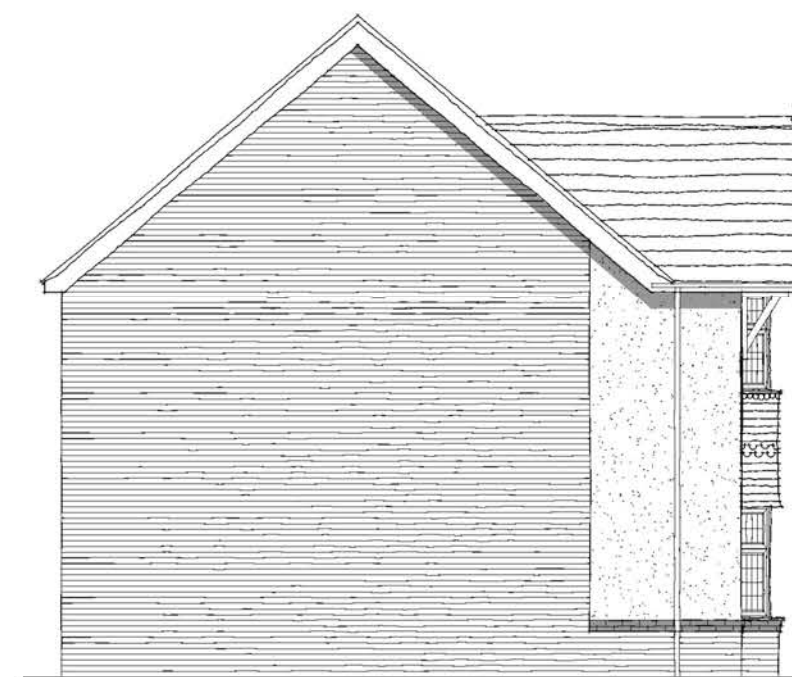
Side Elevation



Ground Floor



Rear Elevation

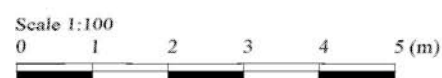


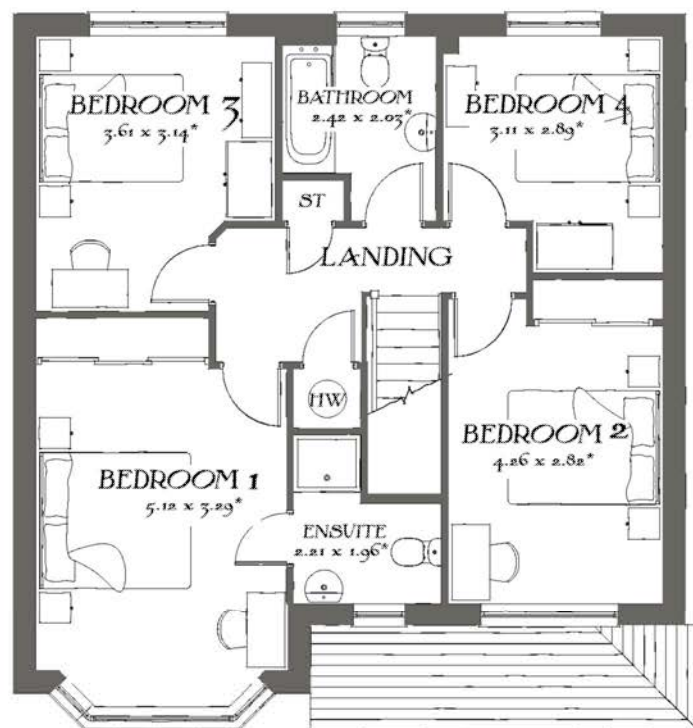
Side Elevation

The Oxford
Heritage Collection
"2014 Edition"

EF Series Render (A1)
1301sqft 120.85m²
DATE: April 2014
REV: -
EF_OXFD_DM.1.0

Drawing scale 1:100 @ A3
Bedroom dimensions taken into wardrobe recess
* Maximum Dimension





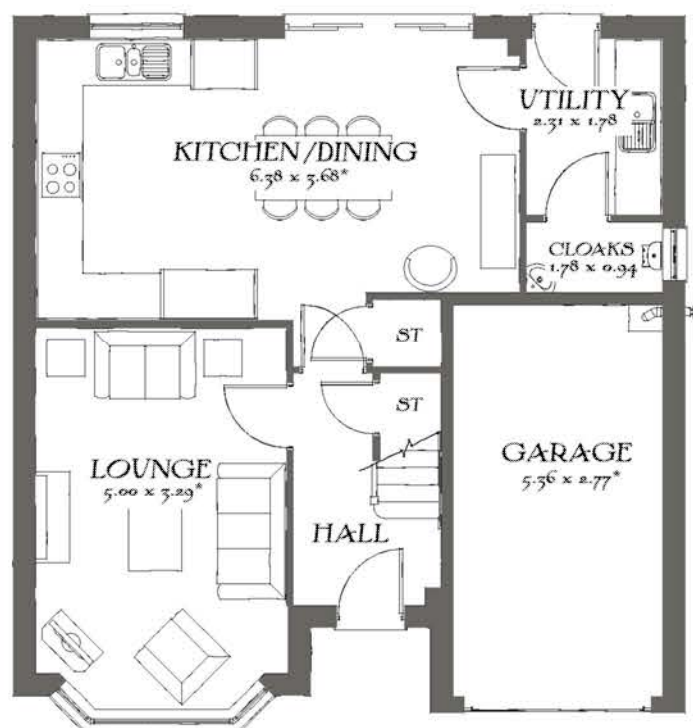
First Floor



Front Elevation



Side Elevation



Ground Floor



Rear Elevation



Side Elevation

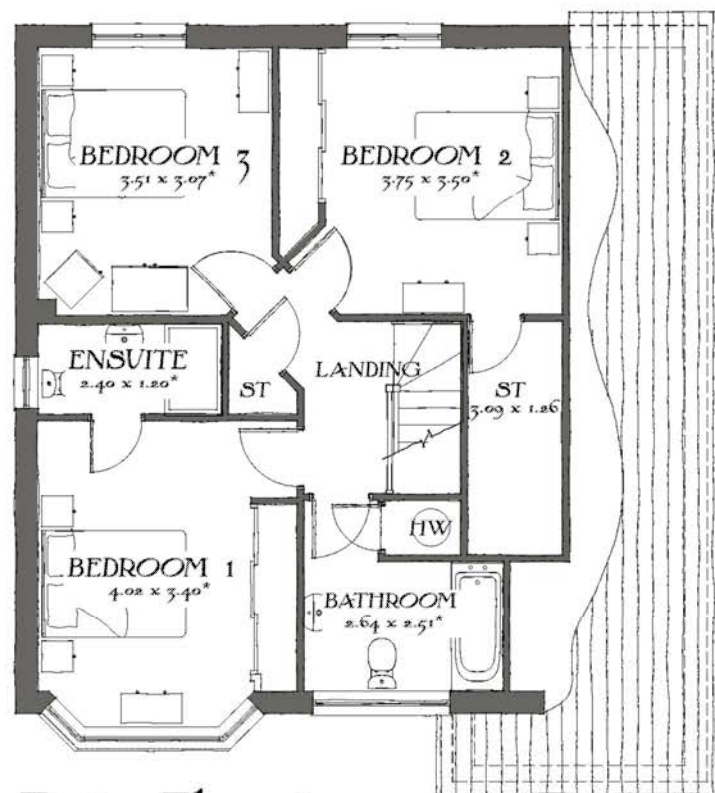
The Oxford
Heritage Collection
"2014 Edition"

EF Series Brick (B1)
1301sqft 120.85m²
DATE: April 2014
REV: -

EF_OXFD_DM.1.0

Drawing scale 1:100 @ A3
Bedroom dimensions taken into wardrobe recess
* Maximum Dimension

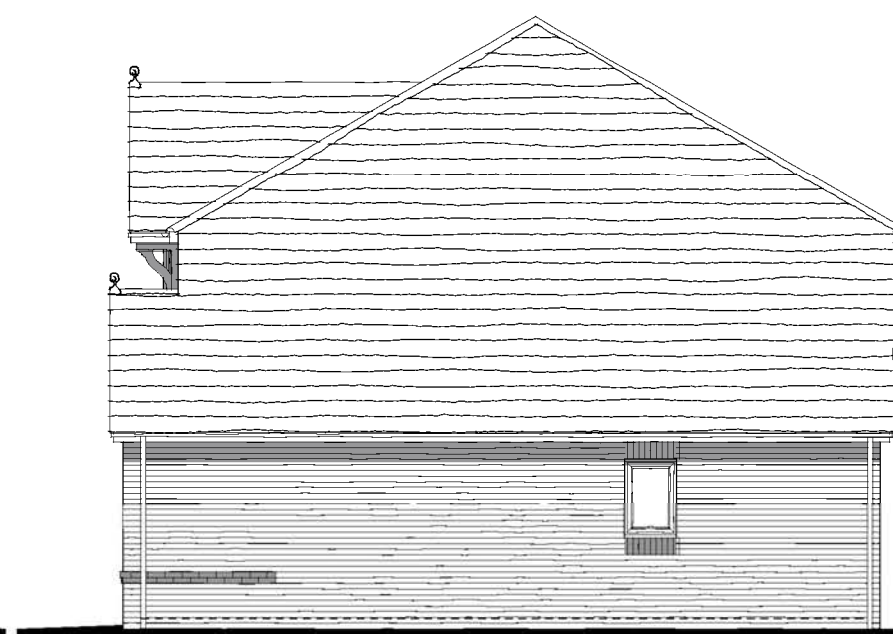




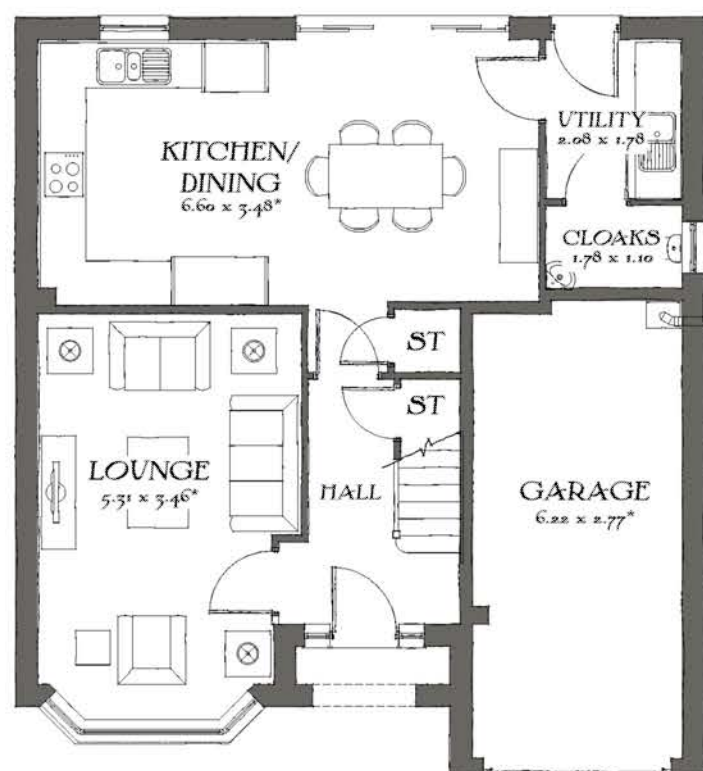
First Floor



Front Elevation



Side Elevation



Ground Floor



Rear Elevation



Side Elevation



The Worcester

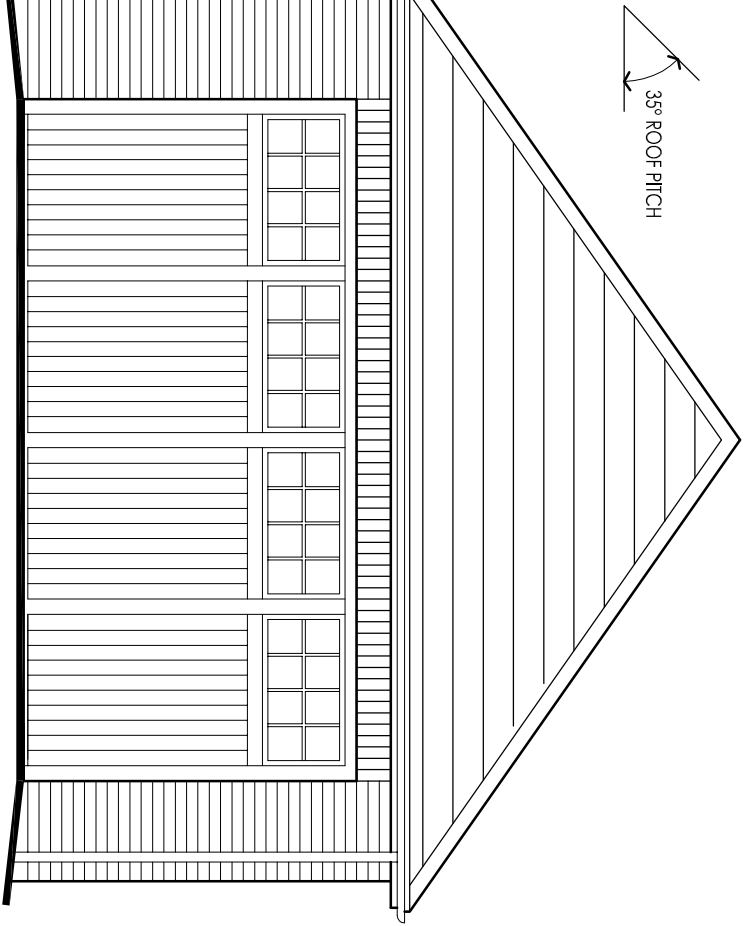
Heritage Collection
"2014 Edition"

EF Series Brick (B1)
1245sqft 115.64m²
DATE: April 2014
REV:

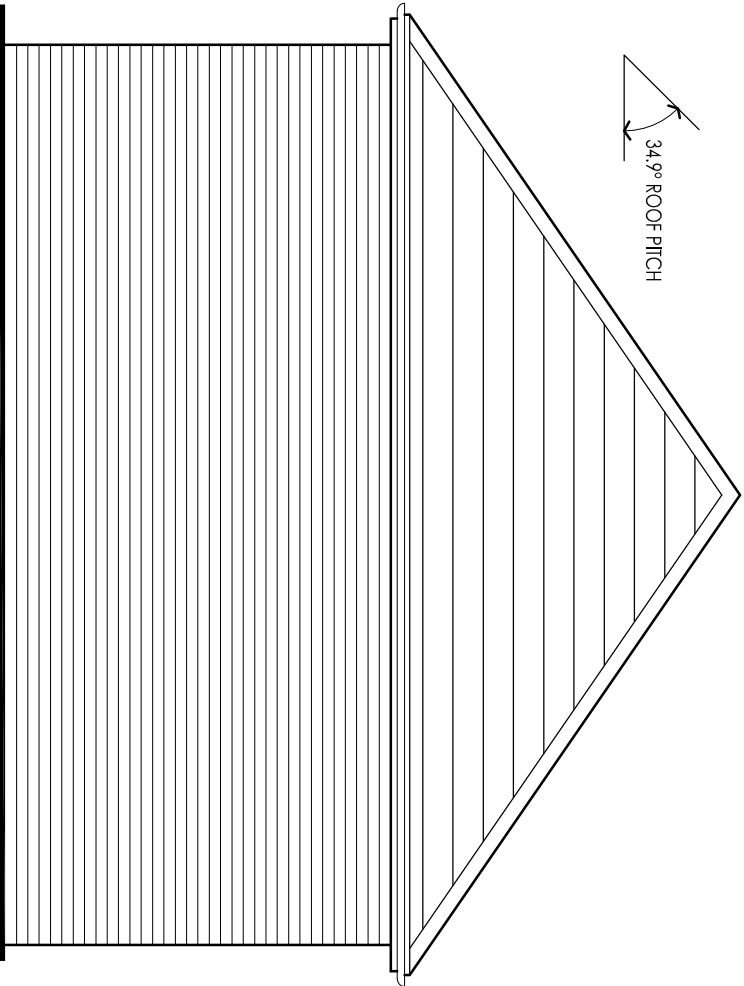
EF_WORC_DM.1.0

Drawing scale 1:100 @ A3
Bedroom dimensions taken into wardrobe recess
* Maximum Dimension

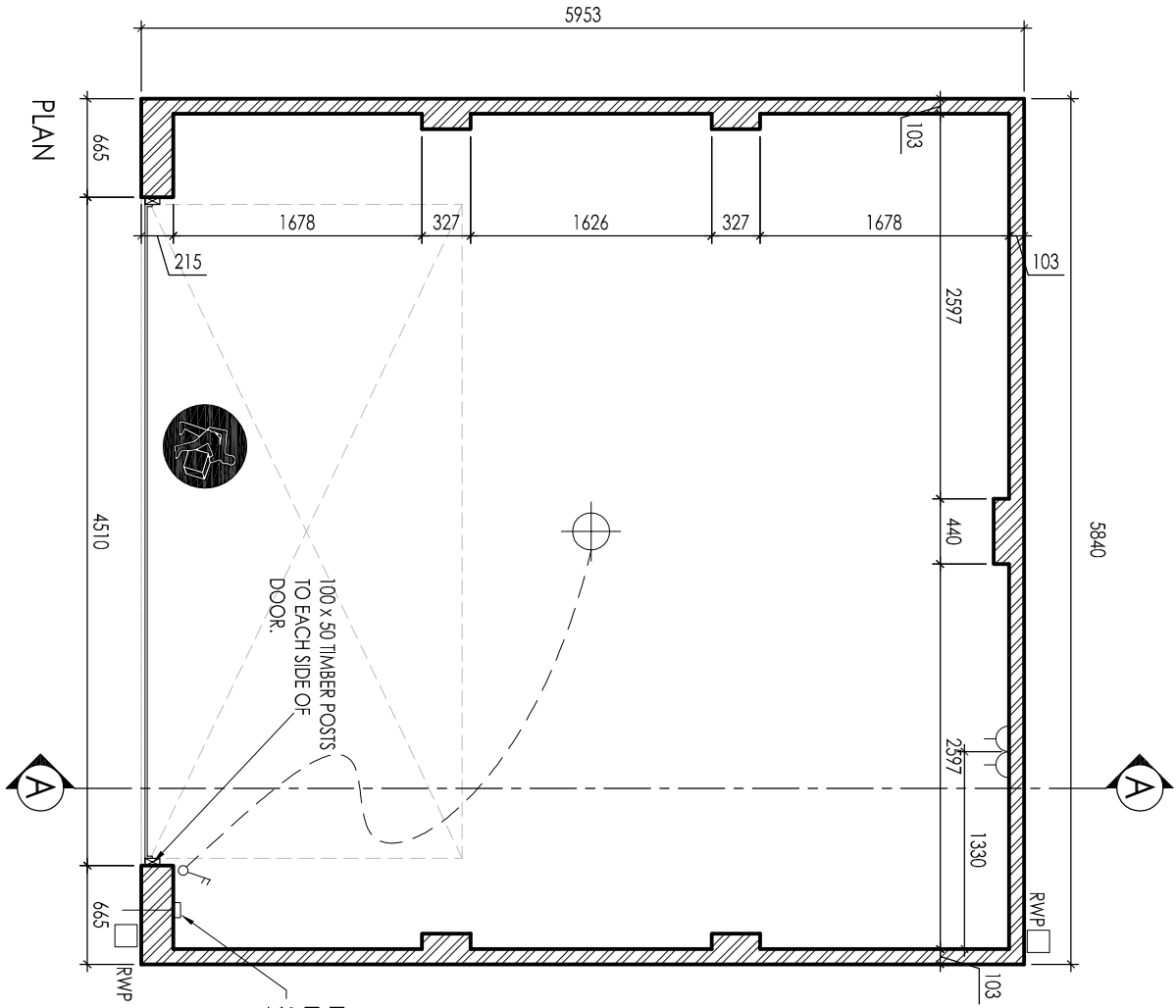




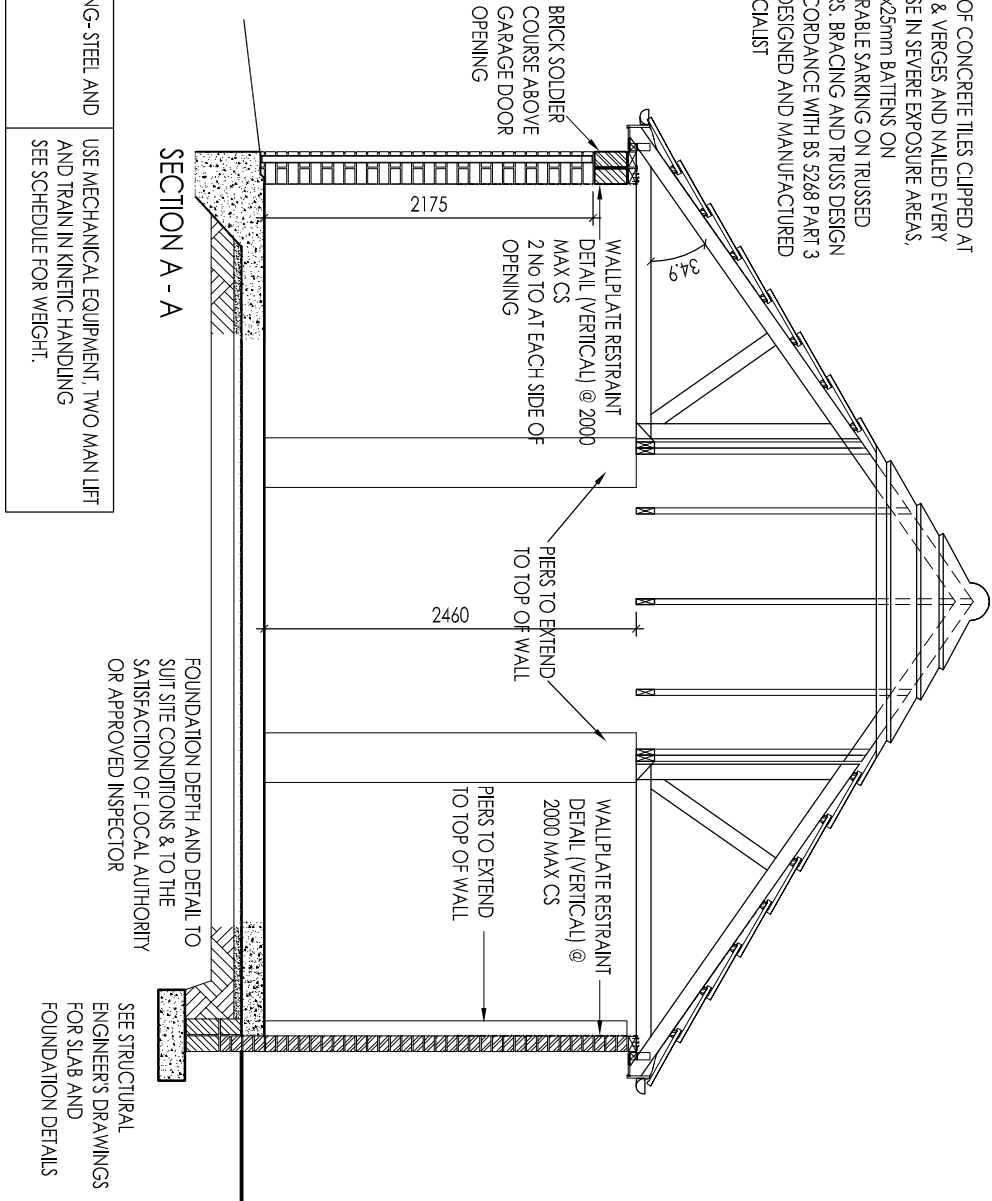
FRONT ELEVATION




SIDE ELEVATION



ROOF OF CONCRETE TILES CLIPPED AT EAVES & VERGES AND NAILED EVERY COURSE IN SEVERE EXPOSURE AREAS, ON 50x25mm BATTENS ON UNTEARABLE SARKING ON TRUSSED RAFTERS. BRACING AND TRUSS DESIGN IN ACCORDANCE WITH BS 5268 PART 3 1985, DESIGNED AND MANUFACTURED BY SPECIALIST



	MAIN HANDLING- STEEL AND LINTEL	USE MECHANICAL EQUIPMENT, TWO MAIN LIFT AND TRAIN IN KINETIC HANDLING SEE SCHEDULE FOR WEIGHT.
---	---------------------------------	--

B	16/11/09	100 x 50 timber post indicated to side of door.
A	20/10/09	Pier sizes increased & Dwg Ref amended.
Rev	Date	Description

C Series	Double Garage
----------	---------------

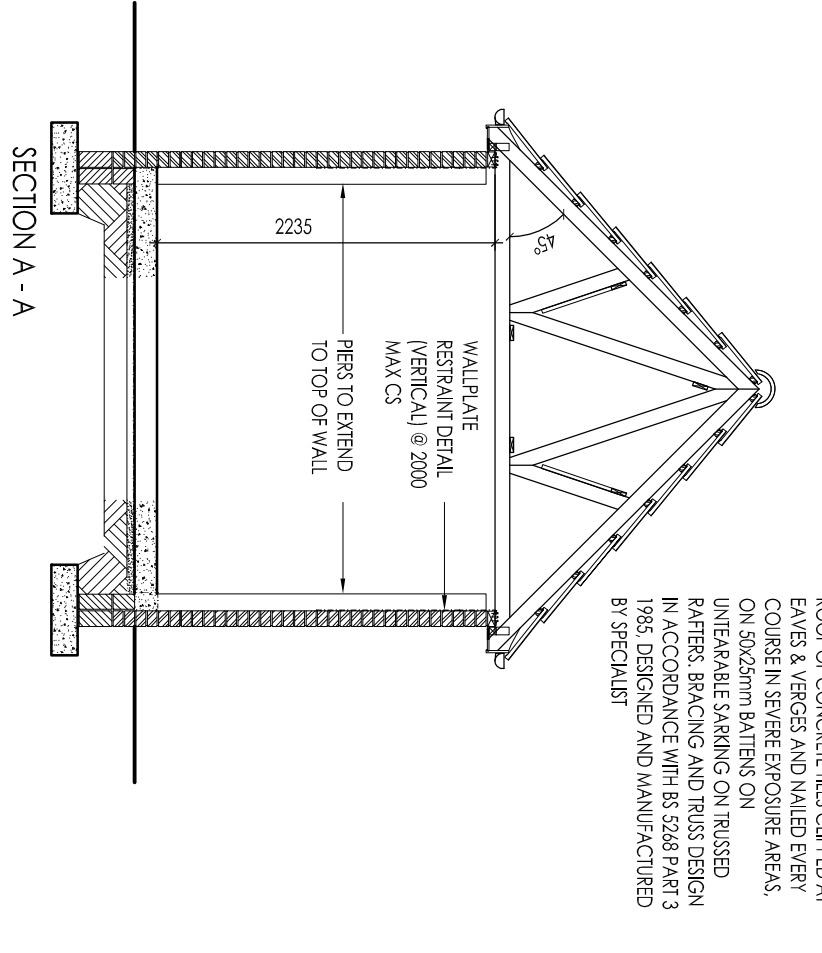
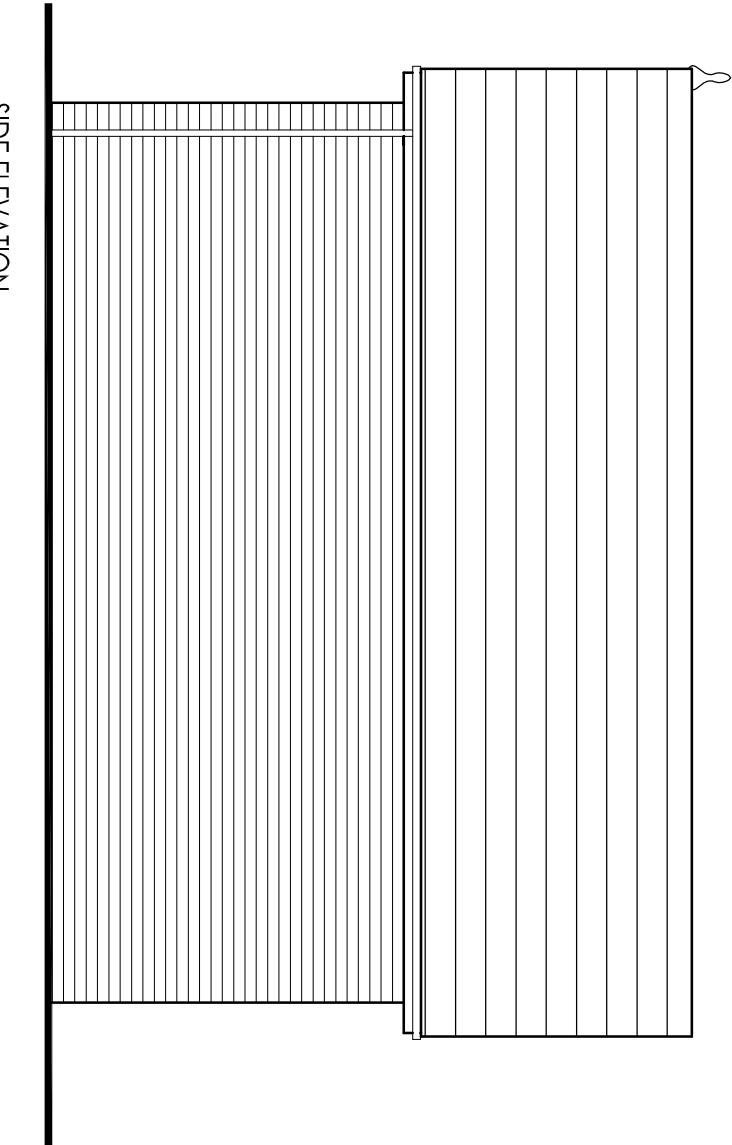
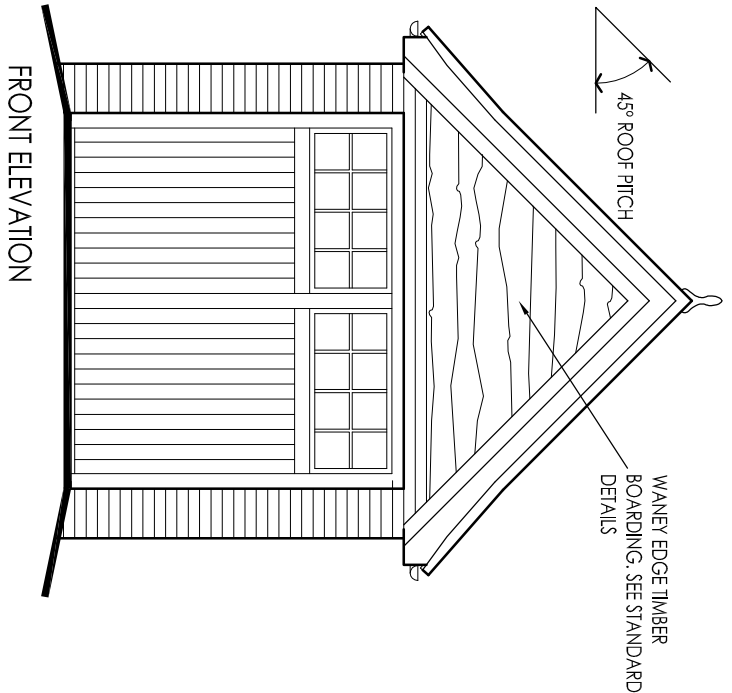
Ref	DCC	Dwg No	Rev
C-DG03	1	001	B

Drawing Title	Double Garage Type 3 Plan, Section & Elevation
---------------	--

Scale at A3	1:50
Approval Date	05/10/2009

	REDROW
www.redrow.co.uk	

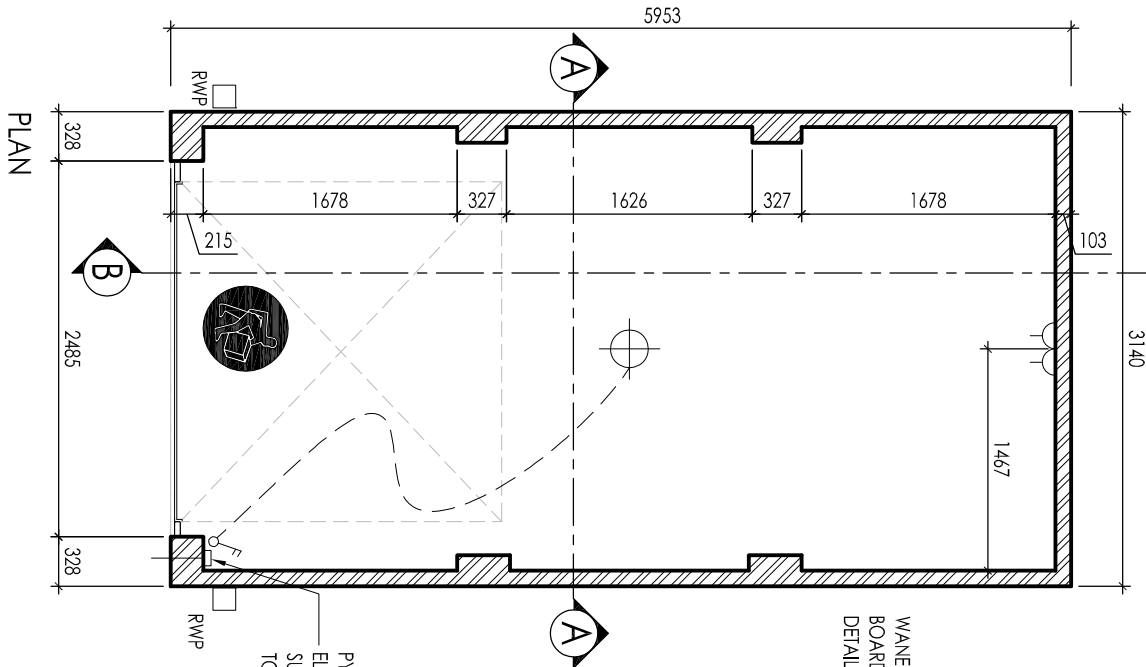
THIS DRAWING MUST BE READ IN CONJUNCTION WITH THE RELEVANT REDROW STANDARD DETAILS
Sheet Published: 13 Apr 2015
This drawing is subject to copyright
DO NOT SCALE FROM THIS DRAWING



FRONT ELEVATION

SIDE ELEVATION

SECTION A - A



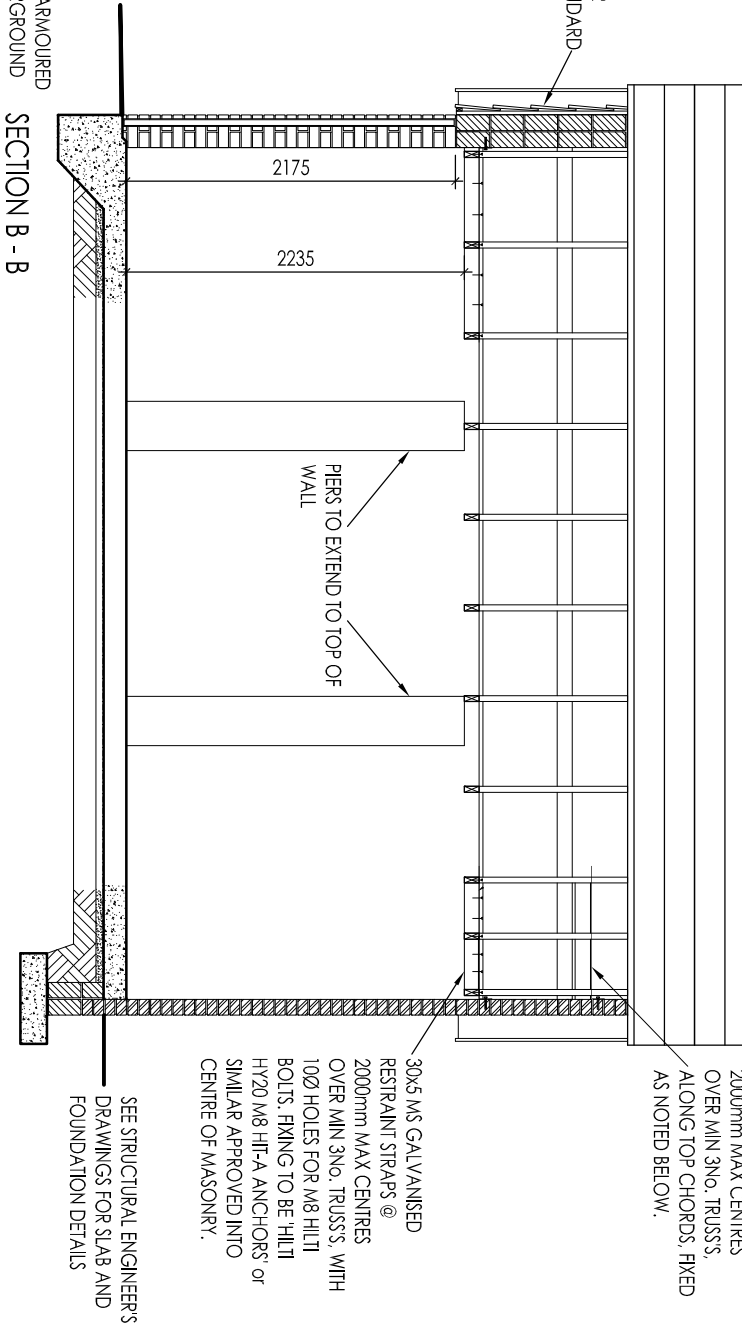
WANNEY EDGE TIMBER BOARDING. SEE STANDARD DETAILS

WANNEY EDGE TIMBER BOARDING. SEE STANDARD DETAILS

PROTENEY OR ARMoured ELECTRIC UNDERGROUND SUPPLY FROM HOUSE FUSE TO ELEC SOCKET OUTLET.

RWP

RWP



SECTION B - B

FOUNDATION DEPTH AND DETAIL TO SUIT SITE CONDITIONS & TO THE SATISFACTION OF LOCAL AUTHORITY OR APPROVED INSPECTOR

SEE STRUCTURAL ENGINEER'S DRAWINGS FOR SLAB AND FOUNDATION DETAILS

30x5 MS GALVANISED RESTRAINT STRAPS @ 2000mm MAX CENTRES OVER MIN 3NO. TRUSSES, ALONG TOP CHORDS, FIXED AS NOTED BELOW.

30x5 MS GALVANISED RESTRAINT STRAPS @ 2000mm MAX CENTRES OVER MIN 3NO. TRUSSES, WITH 100Ø HOLES FOR M8 HILTI BOLTS, FIXING TO BE HILTI HY20 M8 HIT-A ANCHORS or SIMILAR APPROVED INTO CENTRE OF MASONRY.

PIERS TO EXTEND TO TOP OF WALL



MAN HANDLING-STEEL AND UNIEL

USE MECHANICAL EQUIPMENT, TWO MAN LIFT AND TRAN IN KINETIC HANDLING SEE SCHEDULE FOR WEIGHT.

Single Garage

Rev	Date	Description
B	08/12/09	Garage width increased.
A	20/10/09	Pier sizes increased.

Ref	DCC	Dwg No	Rev
C-SG01	1	001	B

Drawing Title

Single Garage Type 1
Plan, Section &
Elevations

Scale at A3	1:50
Approval Date	05/09/2009



THIS DRAWING MUST BE READ IN CONJUNCTION WITH THE RELEVANT REDROW STANDARD DETAILS

Sheet Published: **Redrow Standard**

This drawing is subject to copyright
DO NOT SCALE FROM THIS DRAWING