

#### CRITERION 4


\* - 750 MIN CLEAR WIDTH


^ - 775 MIN CLEAR WIDTH


# - 800 MIN CLEAR WIDTH

Ground Floor

#### Key:-

 Extra items required to comply with Approved Document M4(2) shown in blue.

 Clear space required in WC & Bathroom.

 Number indicates item related to AD-M4(2) Criterion

#### Approved Document M4(2) Criteria

1. Principal entrance to have:
  - 1.1. 1200 x 1200mm level external landing covered for a minimum width of 900mm and depth of 600mm.
  - 1.2. Lighting on dusk to dawn or PIR sensor.
  - 1.3. Min. clear opening width of 850mm with a 300mm nib on the leading edge, maintained for a minimum distance of 1200mm beyond it.
2. All other external doors must comply with paragraph 1.3 above
3. Hall or Landing clear width is 900mm.
4. Door clear widths as AD-M4(2) Table 2.1. 300mm nib to all doors within entrance storey.
5. Entrance level living space
6. In a dwelling with 3 or more bedrooms, the entrance level WC also allows for a potential level access shower.
7. Bathroom and WC walls / ducts / boxings can support fixings (e.g. grab rails, seats and other adaptations)
8. 850mm (min.) clear width to stairs when measured 450mm above the pitch line (ignoring any newel post).

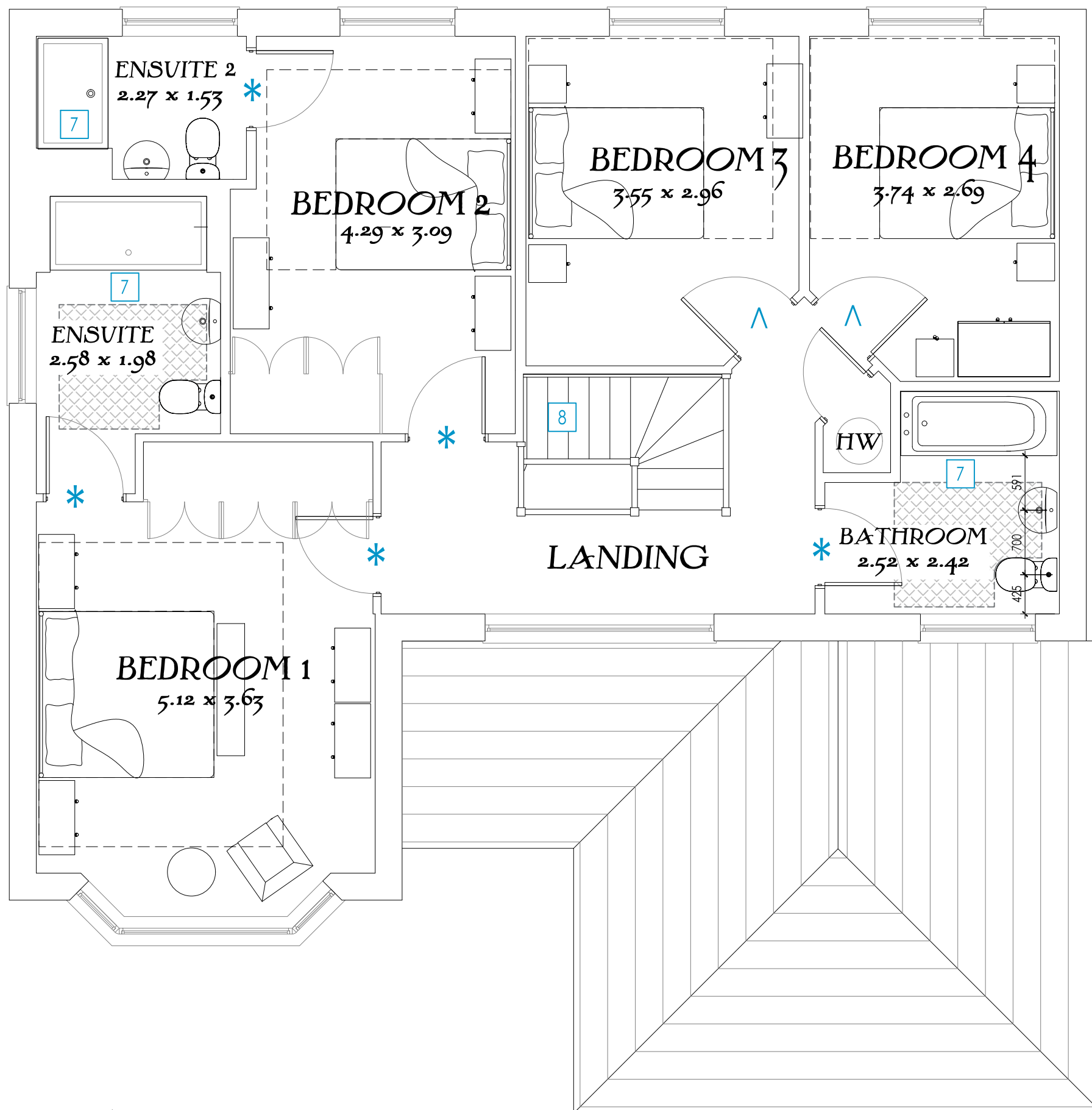
## The Henley M4(2)




Heritage Collection  
"2017 Edition"

EF Series  
1769sqft 164.34m<sup>2</sup>  
DATE: April 2018  
REV: -

EF\_HENL\_M4(2)\_DM.5

Drawing scale 1:50 @ A3



- Key:-**
-  Extra items required to comply with Approved Document M4(2) shown in blue.
  -  Clear space required in WC & Bathroom.
  -  Number indicates item related to AD-M4(2) Criterion

- Approved Document M4(2) Criteria**
- Principal entrance to have:
    - 1200 x 1200mm level external landing covered for a minimum width of 900mm and depth of 600mm.
    - Lighting on dusk to dawn or PIR sensor.
    - Min. clear opening width of 850mm with a 300mm nib on the leading edge, maintained for a minimum distance of 1200mm beyond it.
  - All other external doors must comply with paragraph 1.3 above
  - Hall or Landing clear width is 900mm.
  - Door clear widths as AD-M4(2) Table 2.1. 300mm nib to all doors within entrance storey.
  - Entrance level living space
  - In a dwelling with 3 or more bedrooms, the entrance level WC also allows for a potential level access shower.
  - Bathroom and WC walls / ducts / boxings can support fixings (e.g. grab rails, seats and other adaptations)
  - 850mm (min.) clear width to stairs when measured 450mm above the pitch line (ignoring any newel post).

- General Notes**
- 1200mm clear space is to be maintained in front of and between all kitchen units and appliances.
  - Glazing to the principal window in principal living area to be maximum 850mm above FFL.
  - Consumer units must be mounted at a height between 1350mm and 1450mm above floor level.
  - Switches, sockets, stopcocks and controls have their centre line between 450mm and 1200mm above FFL and a minimum of 300mm from an internal corner.
  - Boiler timer controls and thermostats are to be mounted

# The Henley

## M4(2)

Heritage Collection  
"2017 Edition"

EF Series  
1769sqft 164.34m<sup>2</sup>  
DATE: April 2018  
REV: -

EF\_HENL\_M4(2)\_DM.5

Drawing scale 1:50 @ A3



First Floor





Front Elevation



Side Elevation



Rear Elevation



Side Elevation

The Henley  
M<sub>4</sub>(2)  
Heritage Collection  
"2017 Edition"

EF Series  
1769sqft 164.34m<sup>2</sup>  
DATE: April 2018  
REV: -

EF\_HENL\_M4(2)\_DM.5

Drawing scale 1:100 @ A3

**Key:-**

Extra items required to comply with Approved Document M4(2) shown in blue.

Clear space required in WC & Bathroom.

4

Number indicates item related to AD-M4(2) Criterion

- Approved Document M4(2) Criteria**
- Principal entrance to have:
    - 1200 x 1200mm level external landing covered for a minimum width of 900mm and depth of 600mm.
    - Lighting on dusk to dawn or PIR sensor.
    - Min. clear opening width of 850mm with a 300mm nib on the leading edge, maintained for a minimum distance of 1200mm beyond it.
  - All other external doors must comply with paragraph 1.3 above
  - Hall or Landing clear width is 900mm.
  - Door clear widths as AD-M4(2) Table 2.1. 300mm nib to all doors within entrance storey.
  - Entrance level living space
  - In a dwelling with 3 or more bedrooms, the entrance level WC also allows for a potential level access shower.
  - Bathroom and WC walls / ducts / boxings can support fixings (e.g. grab rails, seats and other adaptations)
  - 850mm (min.) clear width to stairs when measured 450mm above the pitch line (ignoring any newel post).
- General Notes**
- 1200mm clear space is to be maintained in front of and between all kitchen units and appliances.
  - Glazing to the principal window in principal living area to be maximum 850mm above FFL.
  - Consumer units must be mounted at a height between 1350mm and 1450mm above floor level.
  - Switches, sockets, stopcocks and controls have their centre line between 450mm and 1200mm above FFL and a minimum of 300mm from an internal corner.
  - Boiler timer controls and thermostats are to be mounted

# The Henley

## M4(2)

### (Cnr)

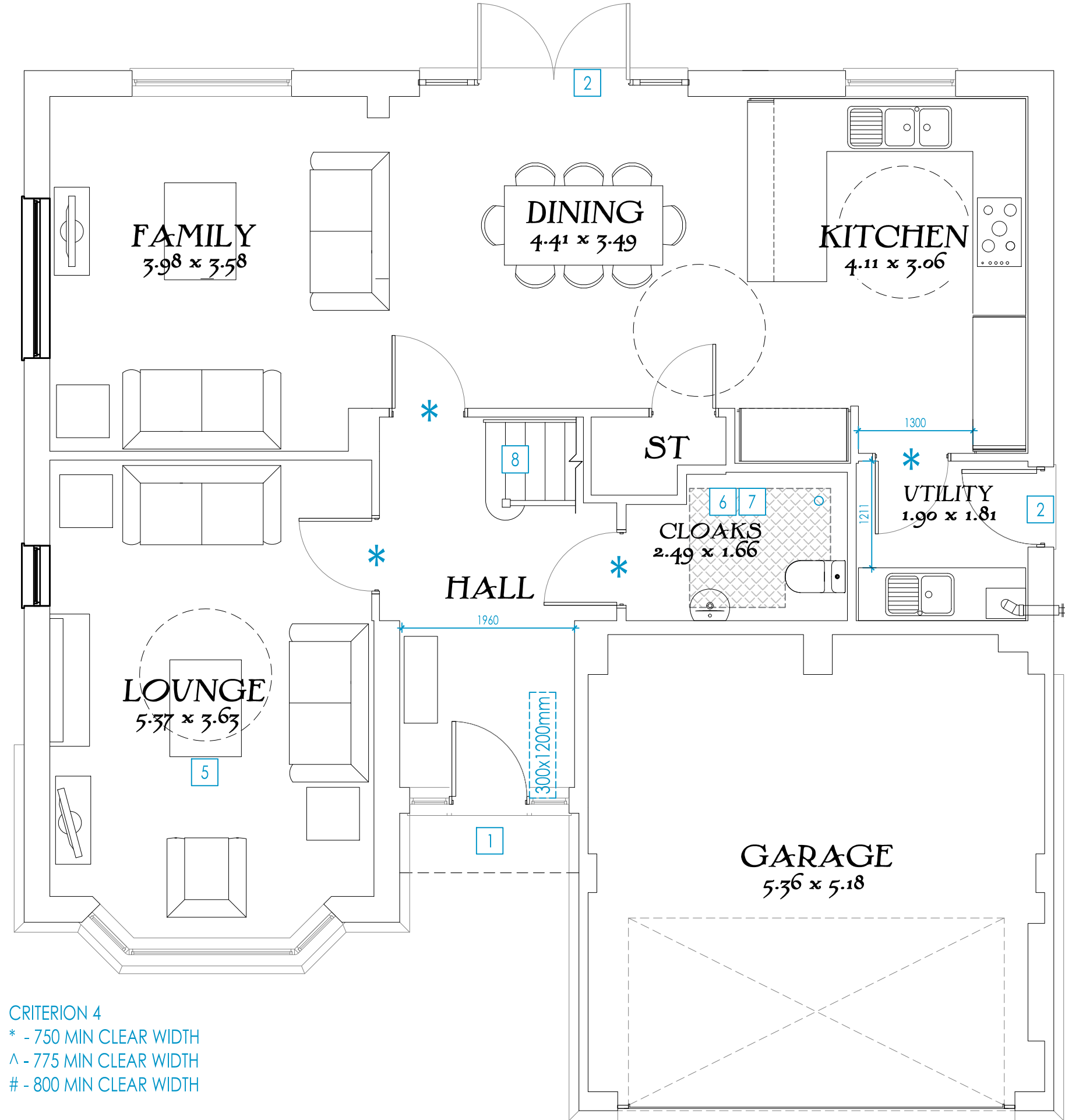
#### Heritage Collection

#### "2017 Edition"

EF Series  
1769sqft 164.34m<sup>2</sup>  
DATE: April 2018  
REV: -

EF\_HENL\_M4(2)\_DM.5

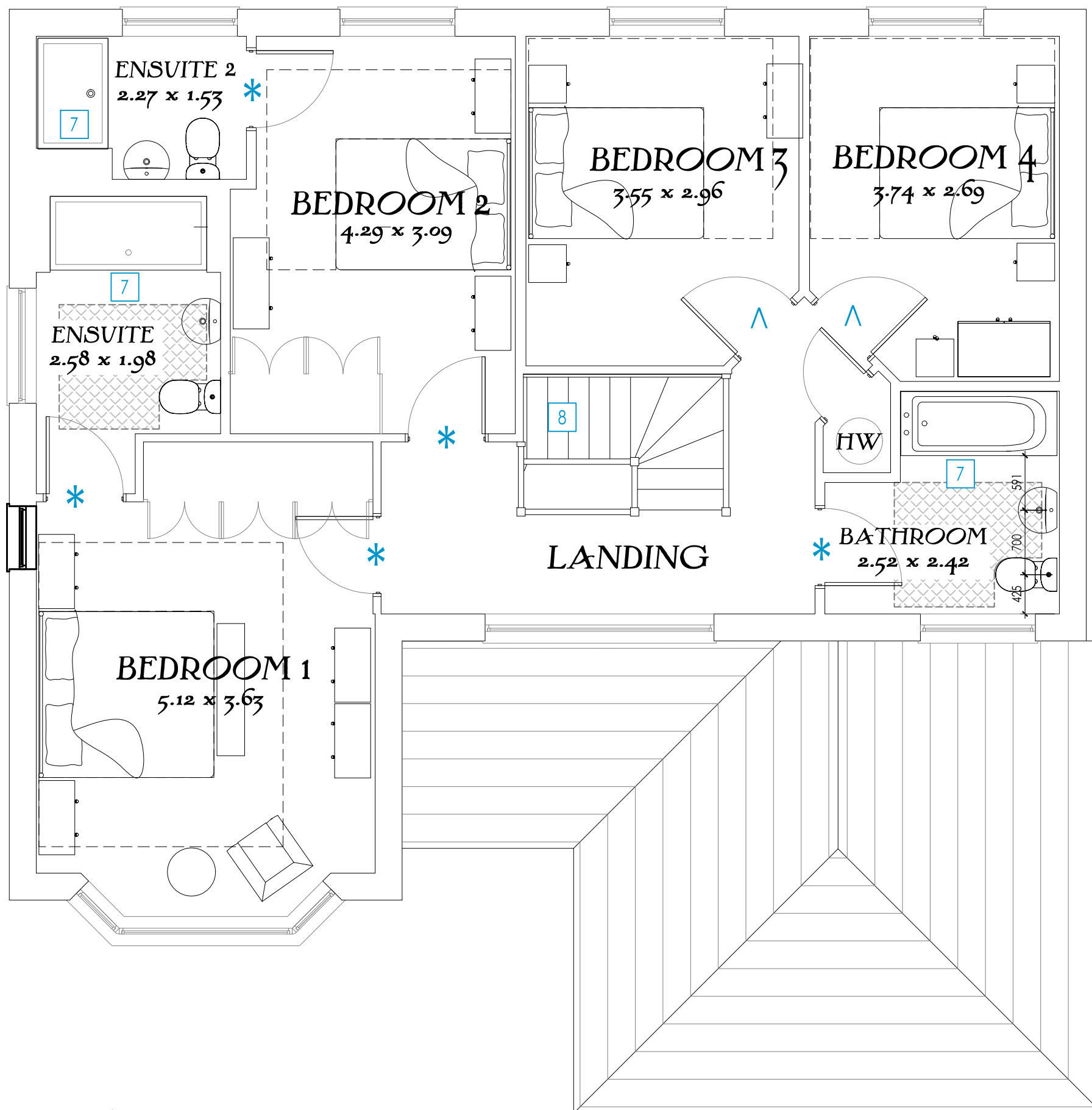
Drawing scale 1:50 @ A3



CRITERION 4  
\* - 750 MIN CLEAR WIDTH  
^ - 775 MIN CLEAR WIDTH  
# - 800 MIN CLEAR WIDTH




Ground Floor





First Floor

**Key:-**

-  Extra items required to comply with Approved Document M4(2) shown in blue.
-  Clear space required in WC & Bathroom.
-  Number indicates item related to AD-M4(2) Criterion

**Approved Document M4(2) Criteria**

- Principal entrance to have:
  - 1200 x 1200mm level external landing covered for a minimum width of 900mm and depth of 600mm.
  - Lighting on dusk to dawn or PIR sensor.
  - Min. clear opening width of 850mm with a 300mm nib on the leading edge, maintained for a minimum distance of 1200mm beyond it.
- All other external doors must comply with paragraph 1.3 above
- Hall or Landing clear width is 900mm.
- Door clear widths as AD-M4(2) Table 2.1. 300mm nib to all doors within entrance storey.
- Entrance level living space
- In a dwelling with 3 or more bedrooms, the entrance level WC also allows for a potential level access shower.
- Bathroom and WC walls / ducts / boxings can support fixings (e.g. grab rails, seats and other adaptations)
- 850mm (min.) clear width to stairs when measured 450mm above the pitch line (ignoring any newel post).

**General Notes**

- 1200mm clear space is to be maintained in front of and between all kitchen units and appliances.
- Glazing to the principal window in principal living area to be maximum 850mm above FFL.
- Consumer units must be mounted at a height between 1350mm and 1450mm above floor level.
- Switches, sockets, stopcocks and controls have their centre line between 450mm and 1200mm above FFL and a minimum of 300mm from an internal corner.
- Boiler timer controls and thermostats are to be mounted

# The Henley M4(2) (Cnr) Heritage Collection "2017 Edition"

EF Series  
1769sqft 164.34m<sup>2</sup>  
DATE: April 2018  
REV: -

EF\_HENL\_M4(2)\_DM.5

Drawing scale 1:50 @ A3





Front Elevation



Side Elevation



Rear Elevation



Side Elevation

The Henley  
M<sub>4</sub>(2)  
(Cnr)  
Heritage Collection  
"2017 Edition"

EF Series  
1769sqft 164.34m<sup>2</sup>  
DATE: April 2018  
REV: -

EF\_HENL\_M4(2)\_DM.5

Drawing scale 1:100 @ A3

Scale 1:100  
0 1 2 3 4 5 (m)

**Key:-**

Extra items required to comply with Approved Document M4(2) shown in blue.

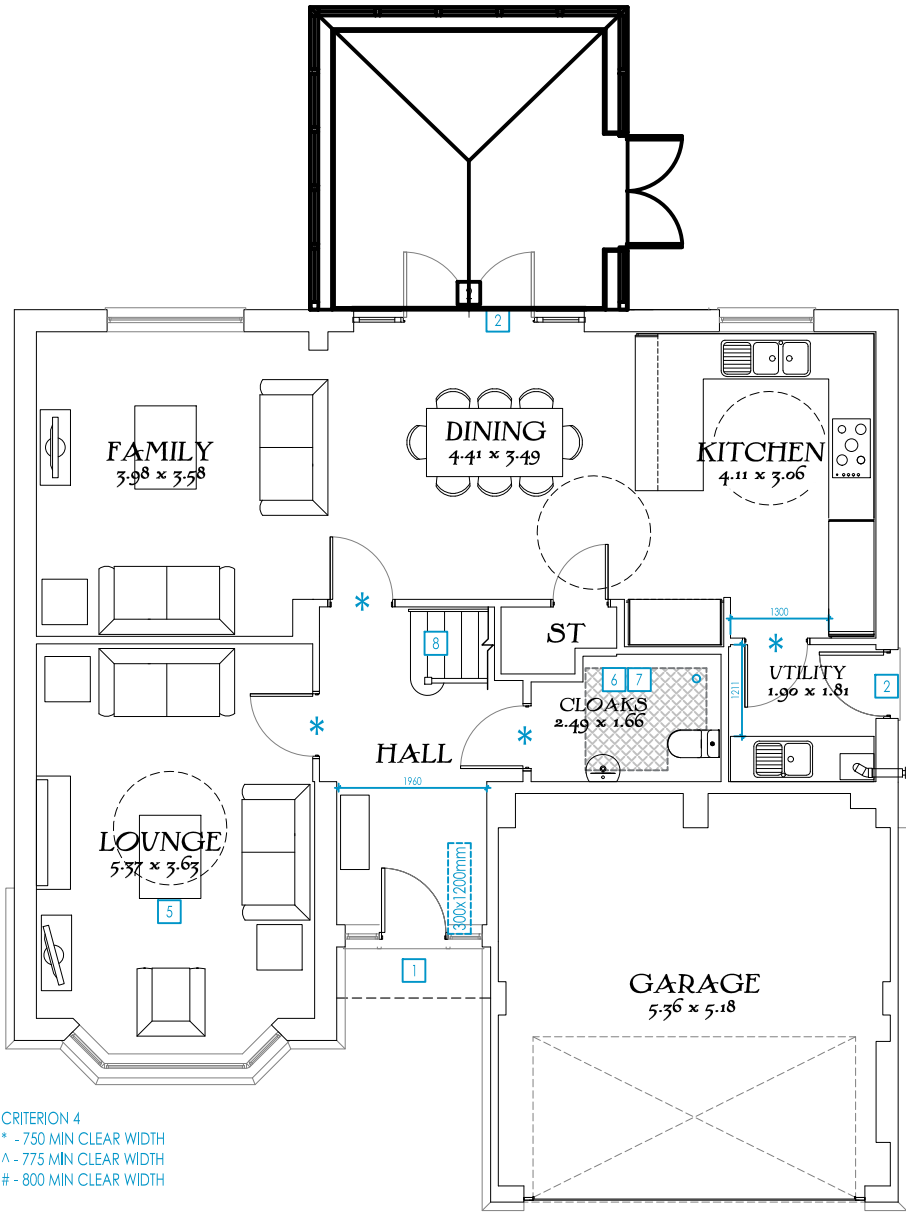
Clear space required in WC & Bathroom.

4

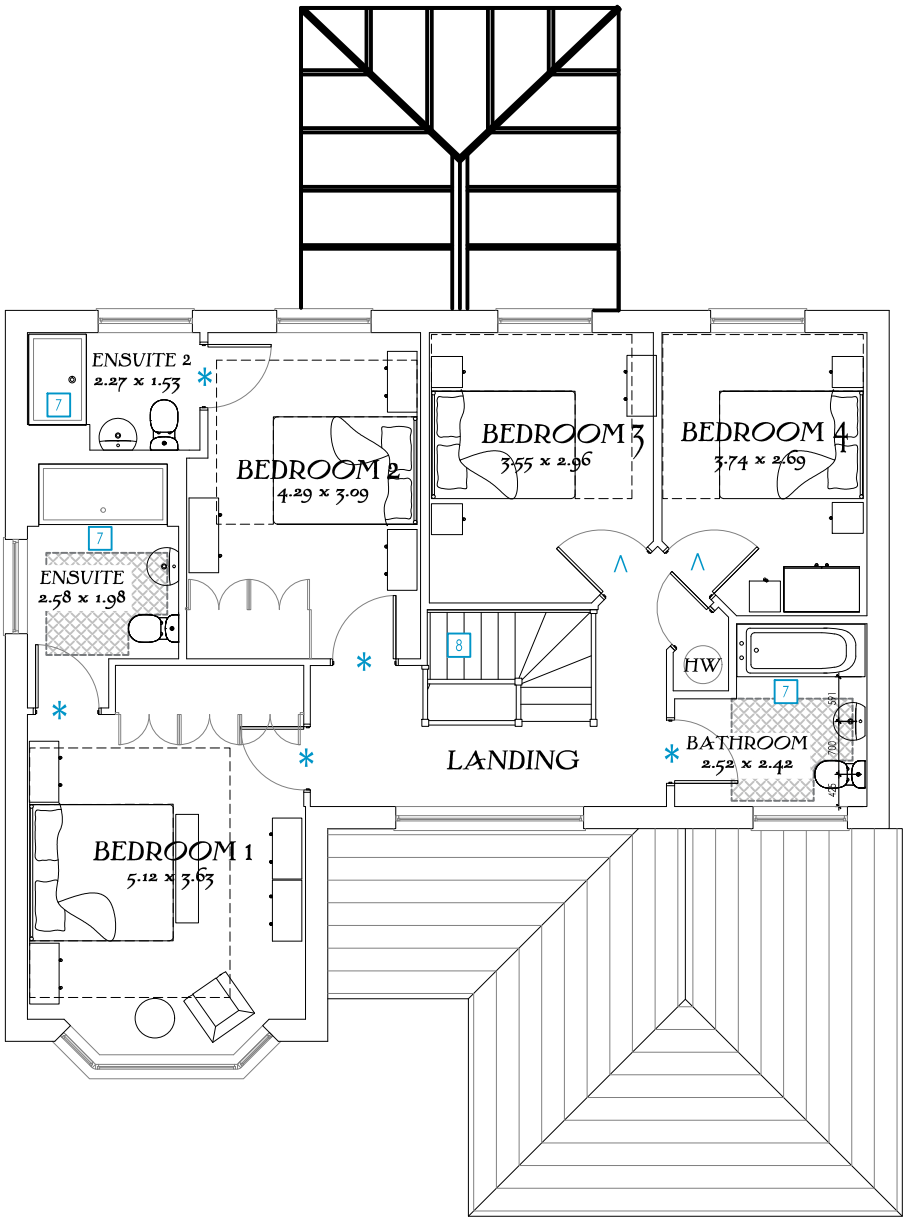
Number indicates item related to AD-M4(2) Criterion

**Approved Document M4(2) Criteria**

- Principal entrance to have:
  - 1200 x 1200mm level external landing covered for a minimum width of 900mm and depth of 600mm.
  - Lighting on dusk to dawn or PIR sensor.
  - Min. clear opening width of 850mm with a 300mm nib on the leading edge, maintained for a minimum distance of 1200mm beyond it.
- All other external doors must comply with paragraph 1.3 above
- Hall or Landing clear width is 900mm.
- Door clear widths as AD-M4(2) Table 2.1. 300mm nib to all doors within entrance storey.
- Entrance level living space
- In a dwelling with 3 or more bedrooms, the entrance level WC also allows for a potential level access shower.
- Bathroom and WC walls / ducts / boxings can support fixings (e.g. grab rails, seats and other adaptations)
- 850mm (min.) clear width to stairs when measured 450mm above the pitch line (ignoring any newel post).



Ground Floor



First Floor

# The Henley M4(2) (Conservatory)

Heritage Collection  
 "2017 Edition"

EF Series  
 1769sqft 164.34m<sup>2</sup>  
 DATE: April 2018  
 REV: -

EF\_HENL\_M4(2)\_DM.5

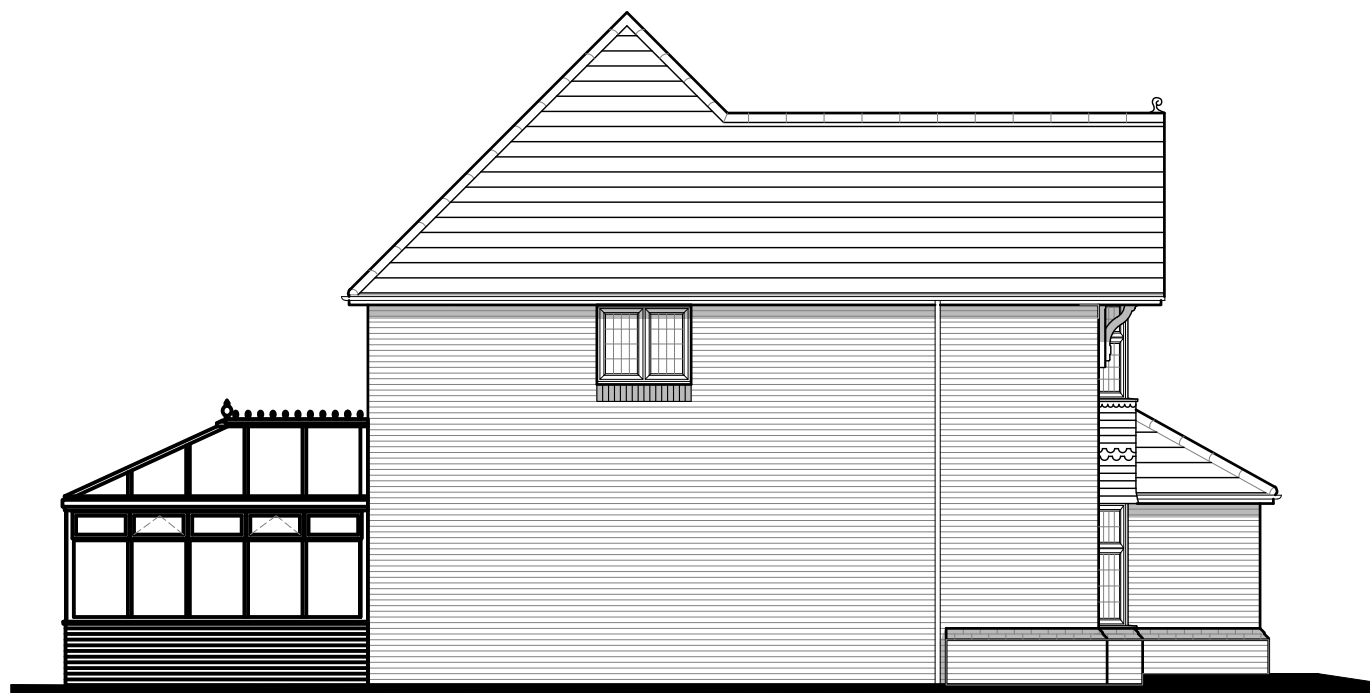
Drawing scale 1:100 @ A3







Front Elevation



Side Elevation



Rear Elevation



Side Elevation

# The Henley M<sub>4</sub>(2) (Conservatory)

Heritage Collection  
"2017 Edition"

EF Series  
1769sqft 164.34m<sup>2</sup>  
DATE: April 2018  
REV: -

EF\_HENL\_M4(2)\_DM.5

Drawing scale 1:100 @ A3