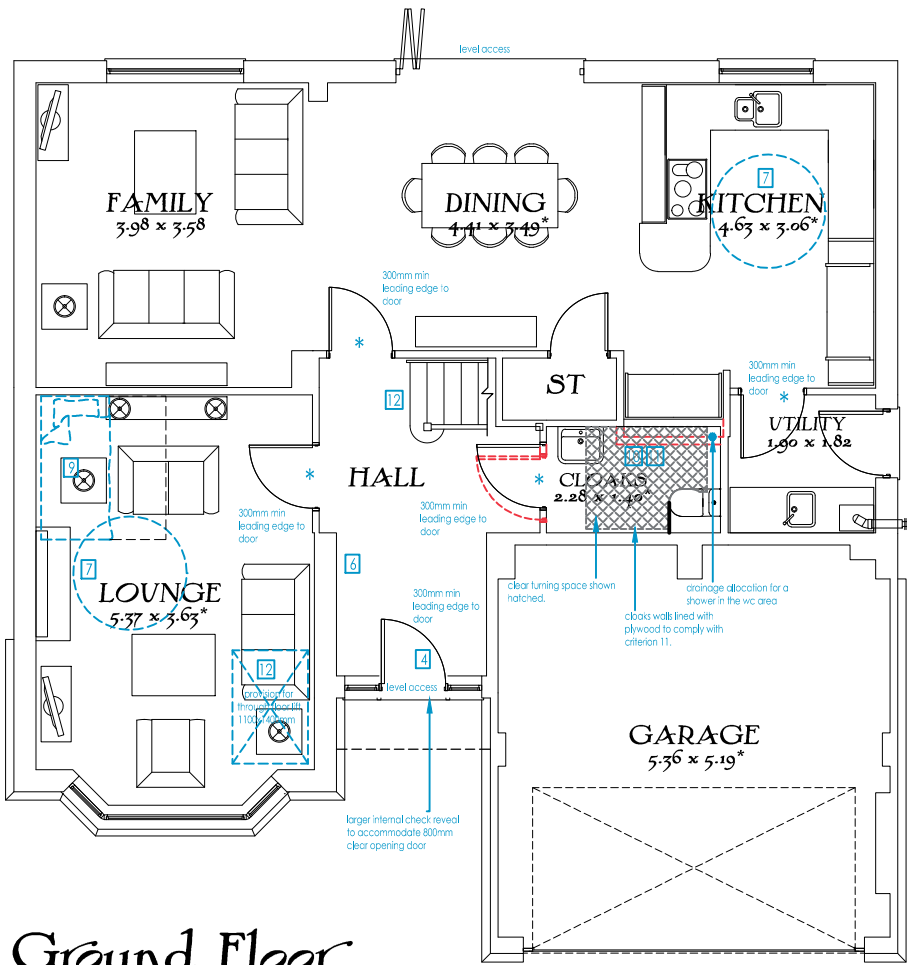


Life Time Homes Criteria

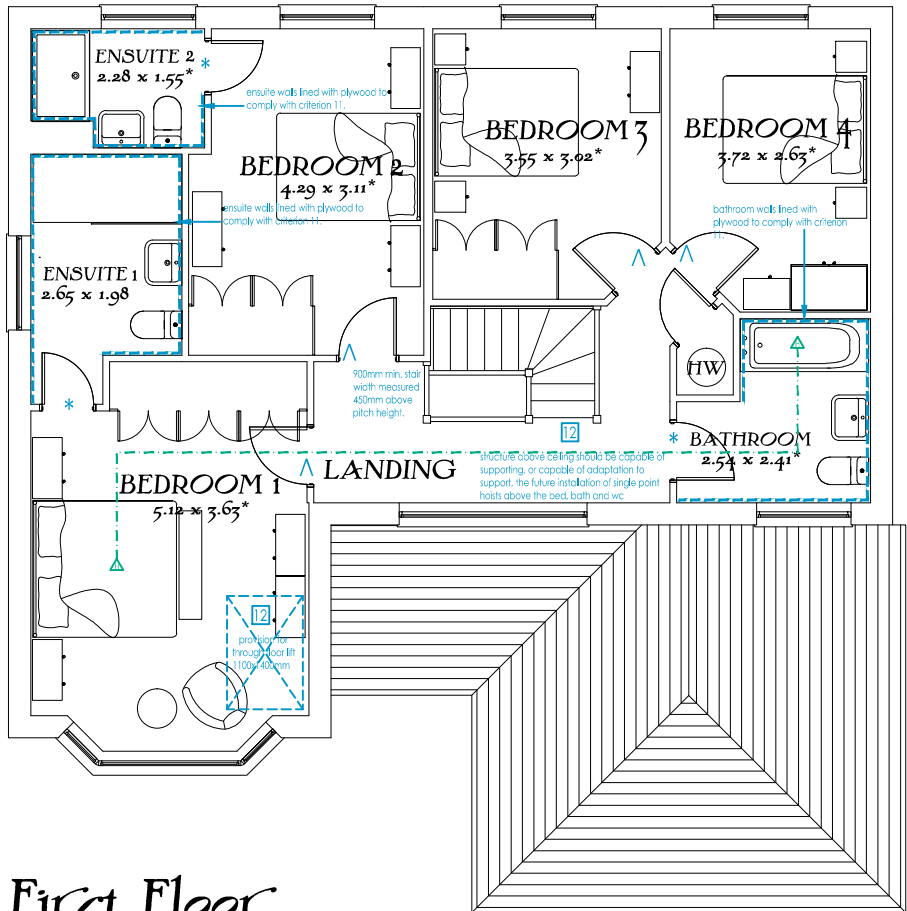
4. Entrances to have light fitting, level access threshold and canopy. Min clear width 800mm with min 300mm nib at leading edge of door swing.
 6. Minimum clear widths for hallways and door openings.
 7. Wheel chair access and turning circle in living areas.
 8. Entrance level living space
 9. Potential for entrance level bed space
 10. Entrance level WC compartment and
 11. Provision for future grab rails within WC's and bathroom facilities.
 12. Minimum stair width of 900mm, stair lift potential and through floor lift.
 13. Hoist from principle bedroom to bathroom facility.
 14. Accessible bathroom facility.
 15. Glazing and window handle heights.
 16. Location of service controls
- For further details please refer to Life Time Homes Revised Criteria Document July 2010

General Notes

- Each habitable room to have 1 No. openable window with controls no higher than 1200mm from finished floor level (kitchen & bathroom window not applicable).
- All service controls should be within a height of 450mm to 1200mm from finished floor. Services include switches, sockets, tv / telephone points, consumer units, heating programmer / radiator thermostats, and water stop tap.



Ground Floor



First Floor

Key:-

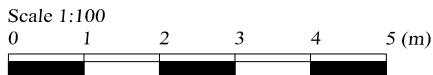
- Location of walls / doors on standard house type shown in red.
- Extra items required to comply with Lifetime Homes shown in blue.
- △ Track Hoist route shown in green.
- ▨ Clear space required in WC & Bathroom.

Criterion 6:-

- * Denotes 750mm Min. Clear Width
- △ Denotes 775mm Min. Clear Width
- # Denotes 900mm Min. Clear Width

General Notes

- Each habitable room to have 1 No. openable window with controls no higher than 1200mm from finished floor level (kitchen & bathroom window not applicable).
- All service controls should be within a height of 450mm to 1200mm from finished floor. Services include switches, sockets, tv / telephone points, consumer units, heating programmer / radiator thermostats, and water stop tap.



The Henley
Premium
Heritage Collection
"2016 Edition"
Lifetime Homes
EF Series
1769sqft 164.35m²
DATE: April 2016
REV: -

EF_HENLP_DM.3

Drawing scale 1:100 @ A3
Bedroom dimensions taken into wardrobe recess
* Maximum Dimension

