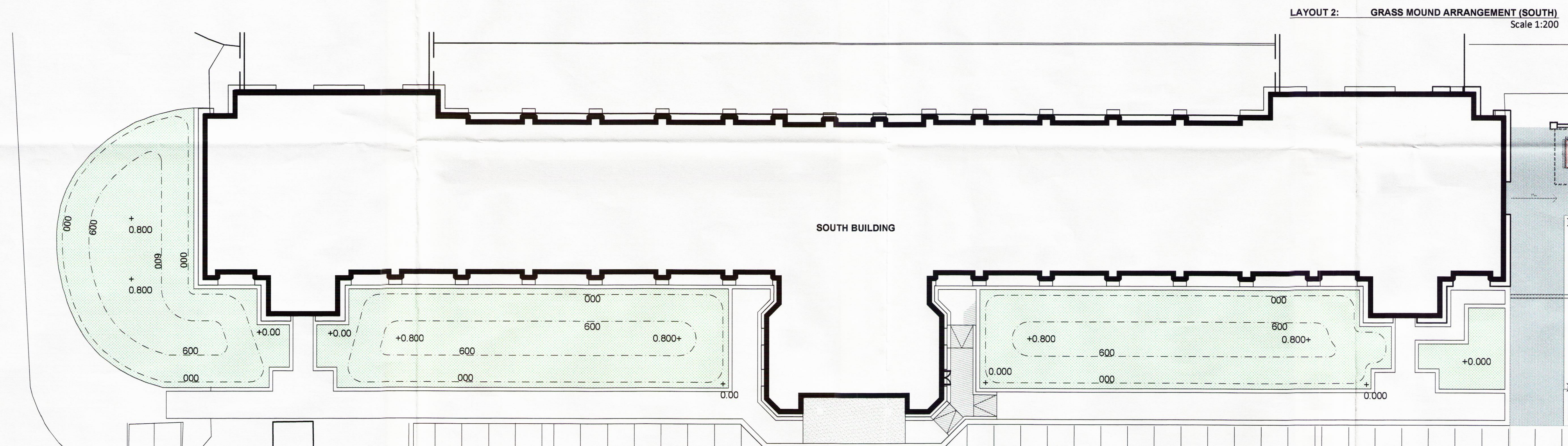


APPROXIMATE VOLUME MEASURE - NORTH:

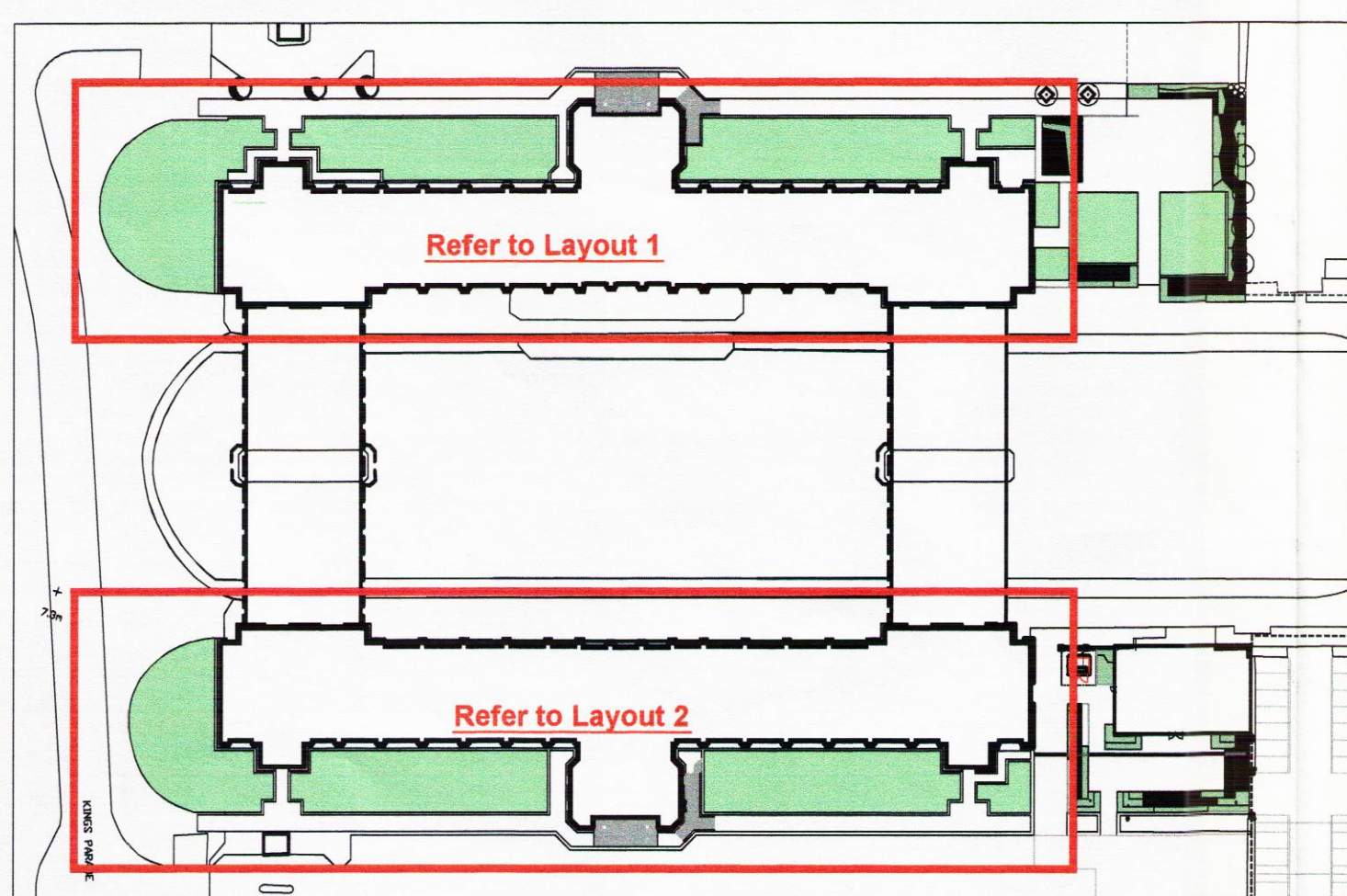
infill capacity within grass mound	288m ³
300mm deep excavated strip to lawn edge as part of site spoil.	145m ³
Difference	143m ³
Volume available for additional spoil	
Total grass area	1061m ²
300mm deep topsoil	318m ³



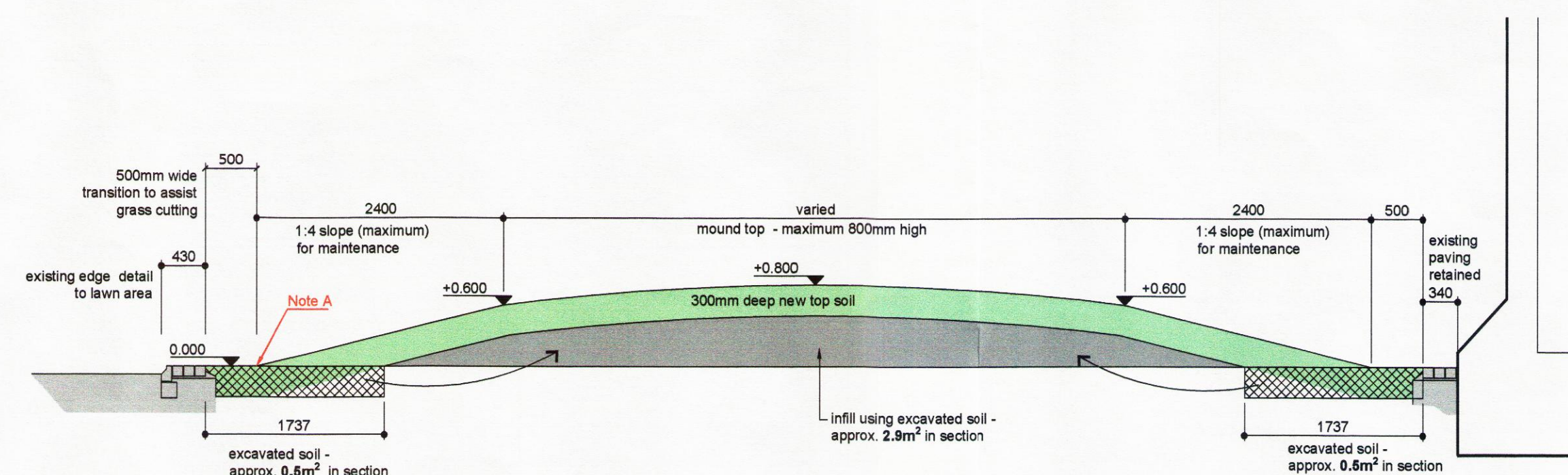
APPROXIMATE VOLUME MEASURE - SOUTH:

infill capacity within grass mound	270m ³
300mm deep excavated strip to lawn edge as part of site spoil.	140m ³
Difference	130m ³
Volume available for additional spoil	
Total grass area	980m ²
300mm deep topsoil	294m ³

15D15/1616



LOCATION PLAN
Scale 1:1000



TYPICAL GRASS MOUND CROSS SECTION
Scale 1:50

THE KEEL - EXTERNAL WORKS

PARAMETERS FOR GRADING OF MOUNDS -

Proposed Mounding -

Slopes must not be steeper than 1 in 4 for areas which are to be grass (they can be steeper for shrub planting, up to 1 in 2).

The transition from adjacent ground on to the mounds, from the side slope on to the top of the mound, and across the top of mounds are critical details. The grading of subsoil / topsoil is to achieve even flowing profiles from the horizontal planes to the side slopes to assist mowing / maintenance: the lower slope profile in section is thus gently concave, with the upper slope profile being gently convex.

This is essential to allow mowers to make a consistent cut whether running parallel to or at right angles to the mound.

Where placing mounding / topsoil in the vicinity of existing trees -

- Topsoil should be graded in to meet the existing levels outside the rooting area of the existing tree.
- Topsoil must not be placed within the root spread of existing trees, and ground levels here must be unchanged.

By way of explanation, spreading topsoil over established roots will change the flow of gases/water to the roots, creating stress and the potential for failure.

PLANNING

Client	GLENBROOK GD LIMITED	Scale	As shown	Drawn	by	by	Date	2015/06/15
Job title	FORMER HRMC BUILDING, QUEENS DOCK, LIVERPOOL	Job number	12.526	Drawing number	L160/005	Rev	P02	
Drawing title	GRASS MOUND ARRANGEMENT							

Rev P02 - June 2015
General amendment based on Architect's latest layout
- changes to grass area and measures

25 JUN 2015