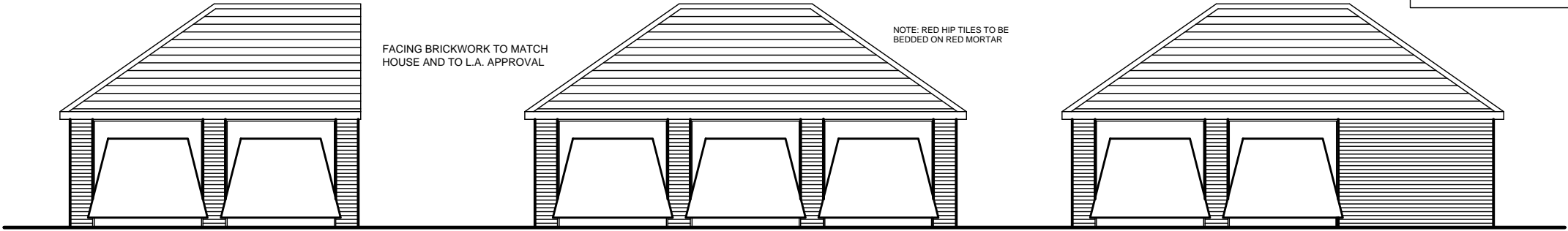


NOTE: RED HIP TILES TO BE  
BEDDED ON RED MORTAR

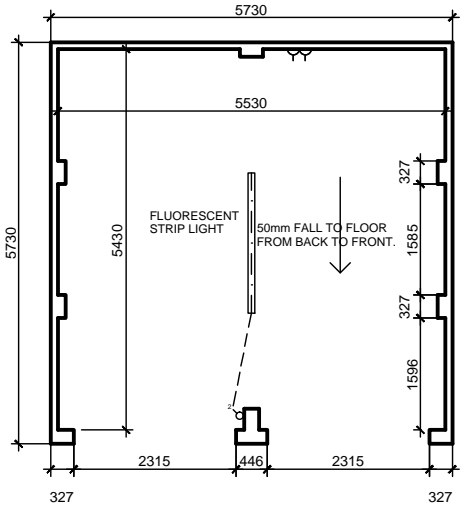
Part L 2010  
Garage  
GR5



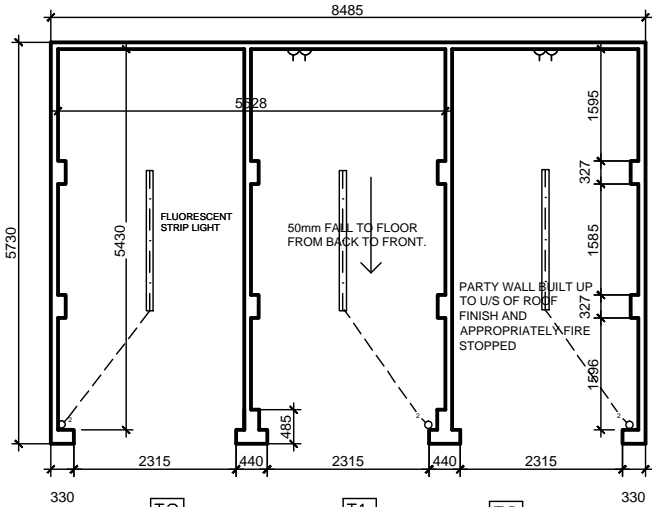
FRONT ELEVATION A

FRONT ELEVATION B

FRONT ELEVATION C



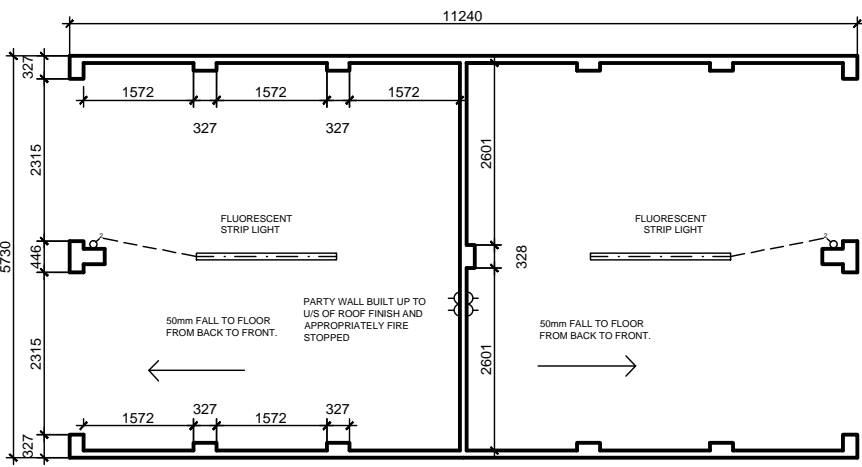
PLAN A



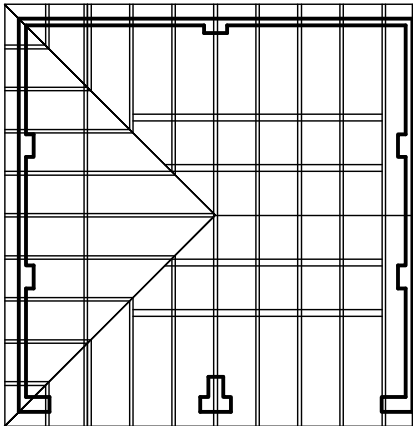
PLAN B

T1

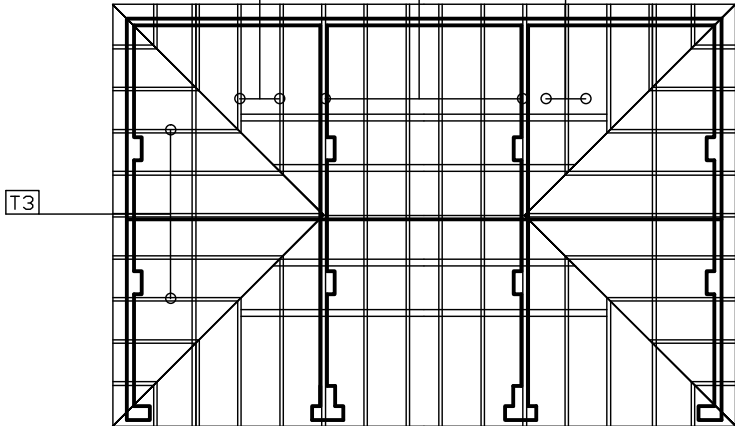
T2



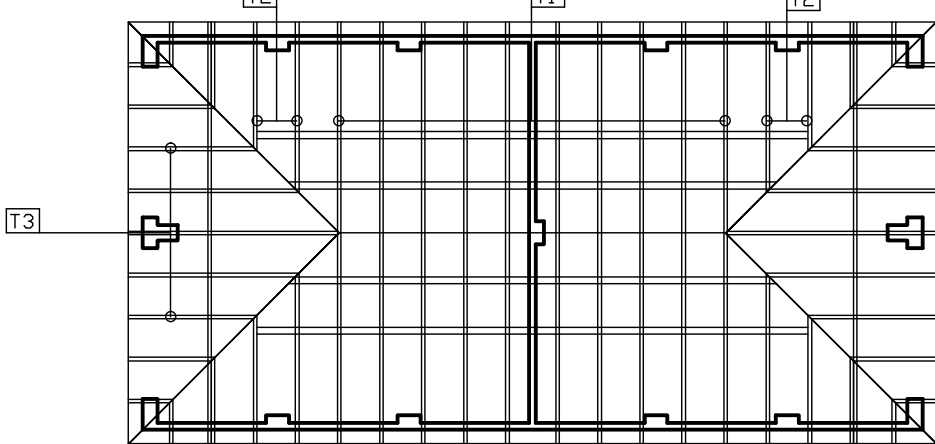
PLAN E



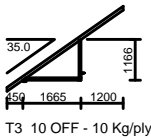
ROOF PLAN A



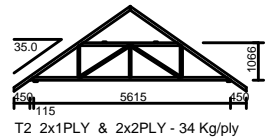
ROOF PLAN B,C,D



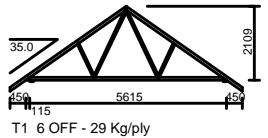
PLAN E



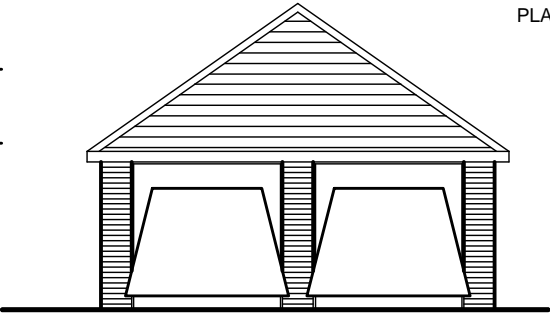
T3 10 OFF - 10 Kg/ply



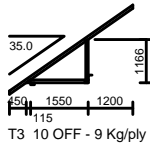
T2 2x1PLY & 2x2PLY - 34 Kg/ply



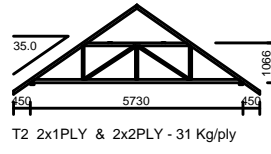
T1 6 OFF - 29 Kg/ply



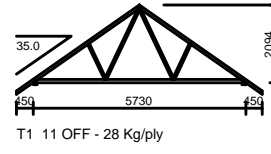
SIDE ELEVATION E



T3 10 OFF - 9 Kg/ply



T2 2x1PLY & 2x2PLY - 31 Kg/ply



T1 11 OFF - 28 Kg/ply

TITLE	PART L 2010 DETACHED GARAGE DETAILS HIPPED ROOFS	DATE	01:08:12	DRAWN	SJ	REVISIONS		Rev	Date	Amendment	Init
		SCALE	1:100	CHECKED	-	DRAWING NO.	GR 5				