

5.0 DESIGN PROPOSAL

5.4 PROPOSED ELEVATIONS

Proposed Kirkdale Road Elevation

The linear form is broken down by deep recesses in the facade so that the whole reads as a series of buildings running along the road. The ground floor benefits from direct access and large windows over looking the street. The upper floor is recessed. The predominant material is brick.



5.0 DESIGN PROPOSAL

5.4 PROPOSED ELEVATIONS

Proposed Smith Street Elevation

This elevation is seen to step down in scale, with recessed terraces to the upper floor. The curved form at the corner of Kirkdale Road and Smith Street is articulated with vertical fins in front of curtain wall glazing providing a strong vertical emphasis to provide a focal point to the cross roads.



5.0 DESIGN PROPOSAL

5.4 PROPOSED ELEVATIONS

Proposed Courtyard Elevation Smith Street

Internal elevations are also in brick with contrasting recessed brick panels adjacent to windows.



5.0 DESIGN PROPOSAL

5.4 PROPOSED ELEVATIONS

Proposed Courtyard Elevation Kirkdale Road

Opposing internal elevations will have a repeated window detail to maintain a simplicity of appearance.



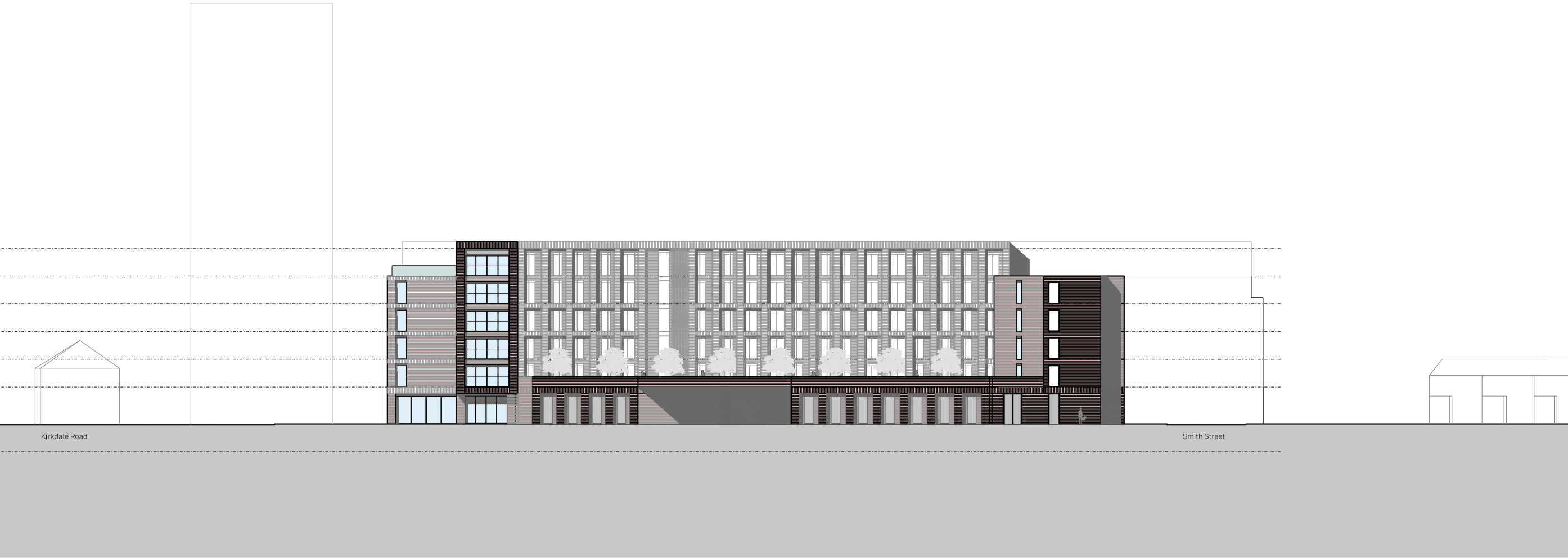
5.0 DESIGN PROPOSAL

5.4 PROPOSED ELEVATIONS

Proposed Whittle Street Elevation

The perimeter to Whittle Street is the main elevation for vehicular movement and servicing.

Views to the private courtyard garden and tree planting will be visually attractive.



5.0 DESIGN PROPOSAL

5.5 MATERIALITY

Key

- 1. Red Brick
- 2. Grey Brick
- 3. bronze metal cladding
- 4. Vertical metal fins
- 5. Glazing
- 6. Glass balustrade
- 7. Soldier course brick



① Red Brick



② Grey Brick



③ Bronze Metal Cladding



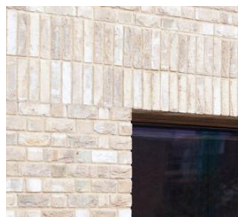
④ Vertical Metal Cladding



⑤ Glazing



⑥ Glass Balustrade



⑦ Soldier course

