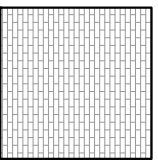

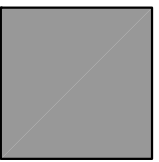


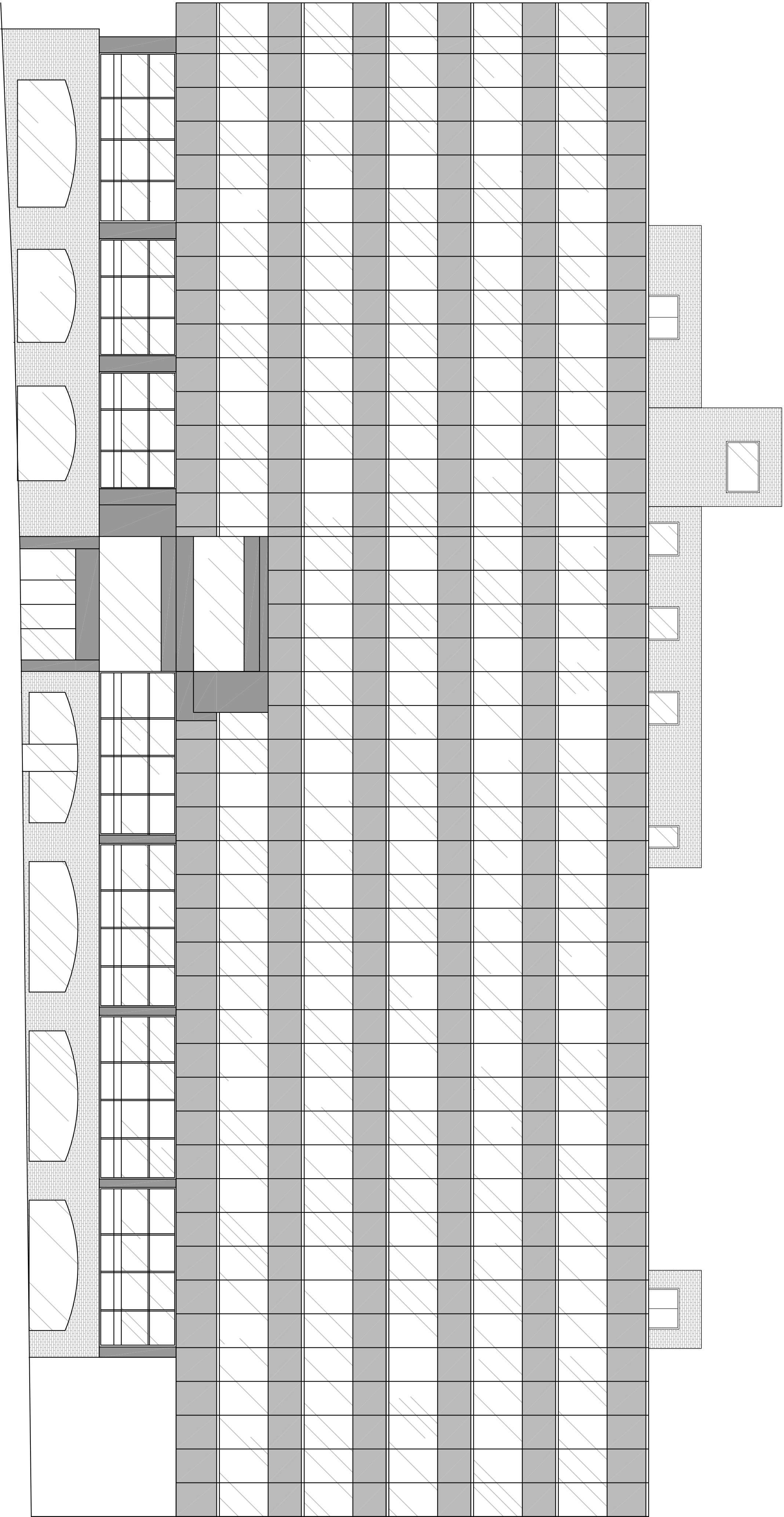
General Notes:

1. No dimension is to be scaled from this drawing. All Contractors must familiarise themselves with site conditions, including checking site dimensions, and must report in writing at any discrepancies with the drawings to the Architect. The Contractor shall obtain further instructions from CBRE prior to proceeding with the affected elements.
2. The Contractor shall coordinate with other related drawings, Specifications, Schedules and Bill of Materials (the Contract Information) produced and issued by CBRE and other involved parties. Any inconsistency or contradiction of any of the information contained herein shall obtain further instructions from CBRE prior to proceeding.
3. Contractor to verify on stability of all details and to ensure structural integrity, stability and strength of all construction for the intended performance.
4. Contractor to ensure all specified and implied materials, fixtures and fittings are fabricated and installed in accordance with their manufacturers' recommendations. Contractor is responsible for ensuring that all materials, fixtures and fittings are installed. Where manufacturers' recommendations conflict or are inconsistent with any of the information contained within the Contract Information, the Contractor shall obtain further instructions from CBRE prior to proceeding.
5. Contractors to ensure that all materials and construction complies with Building Regulations, CDM and CDM Regulations.
6. Contractors to ensure all specified materials, fixtures and fittings are checked CBRE if any items will not be available in sufficient time and to request further instructions.

Copyright notice:
This and all other documents authored by CBRE and all information and copyright therein are the sole property of CBRE. No part of this document may be reproduced, stored in a retrieval system, or transmitted in any form or by any means, electronic, mechanical, photocopying, recording, or by any information storage and retrieval system, without prior permission in writing from CBRE. Construction based on the depicted information at any time or location not related to CBRE. Construction based on the depicted information at any time or location not related to CBRE. Construction based on the depicted information at any time or location not related to CBRE. Construction based on the depicted information at any time or location not related to CBRE.

KEY LEGEND

- 
ENGINEERING BRICK
- 
WHITE MOSAIC
- 
LEAD CLADDING



1 Old Hall Street Existing Elevation
Scale 1:100 @ A1

CBRE

CBRE Limited
St Martins Court 110 Paternoster Row | London | EC4M 7HP
T: 0207 182 2000 | F: 0207 182 3007 | W: www.cbre.com

Project: 1 Old Hall Street			
Drawing: Old Hall Street Existing Elevation			
Scale: 1:100 @ A1	Drawn: AP	Date: 21.12.15	
Alternate Scale: 1:200 @ A3	Chkd: MP	Approved: PFB	
Status: Planning			
Project No: TBA	Drawing No: APL-07	Rev No: --	