







RSL APARTMENTS		1 BED	2 PERSON	APARTMENT	B
1B2P APT	(51.00 Sq.m)	--			
RSL HOUSES					
1ST 2B		--	2 BED	3 PERSON	BUNGALOW 2
2ST 2B	(76.00 Sq.m)	--	2 BED	4 PERSON	SEMI/NEWS 5
2B4P Aspect		--	2 BED	4 PERSON	SEMI 1
2ST 3B	(85.88 Sq.m)	--	3 BED	5 PERSON	SEMI 3

TOTAL No. OF UNITS = 19



Proposed Shared Ownership Plots

## SCHEDULE OF MATERIALS

- |   |  |
|---|--|
|  | 1.8m Brick Screen Wall                 |
|  | 2.0m Brick Pier                        |
|  | 1.8m Feather Edged Timber Screen Fence |
|  | 1.5m Feather Edged Timber Screen Fence |
|  | 0.8m Timber Birdmouth Knee Roll Fence  |
|  | 1.8m Feather Edges Timber Gate         |

Existing Trees to be Retained

Existing Tree to be Removed

National Soft Landscaping &amp; Plot Planting

Proposed Gross Highway Service Verge

REV.	DATE	DRAWN	DESCRIPTION	ARCH	ENG
				CHECK	CHKUS

## PLANNING LAYOUT

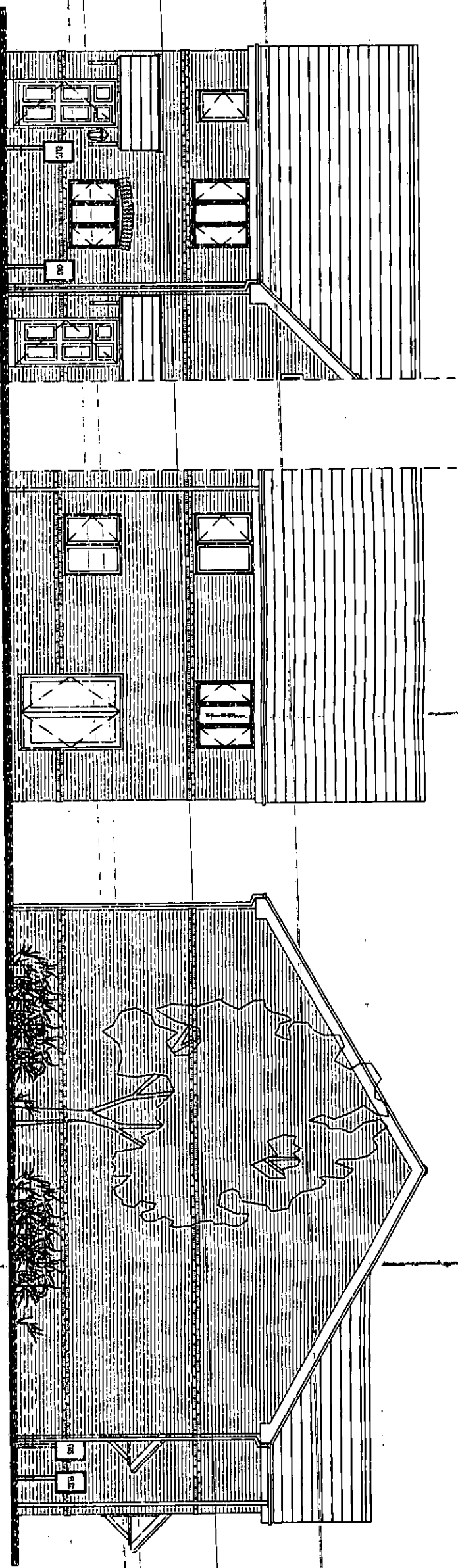


**M.C.I Developments Ltd.**  
1 Beecham Court,  
Smithy Brook Road,  
Wigan, WN3 6PR

tel: 08448871467  
fax: 08449871468  
web: [www.mcidevelopments.com](http://www.mcidevelopments.com)  
email: [admin@mcidevelopments.com](mailto:admin@mcidevelopments.com)

PROJECT BRUNSWICK STREET,  
LIVERPOOL

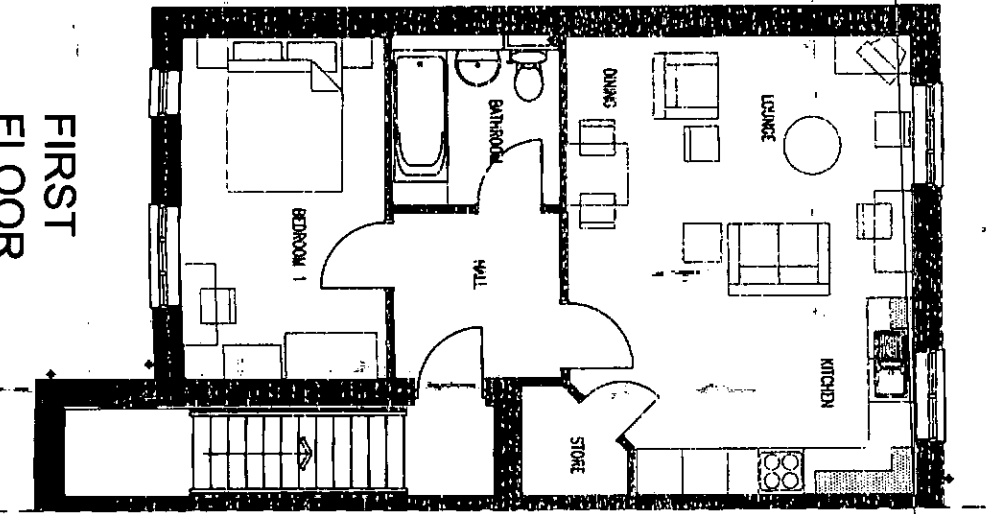
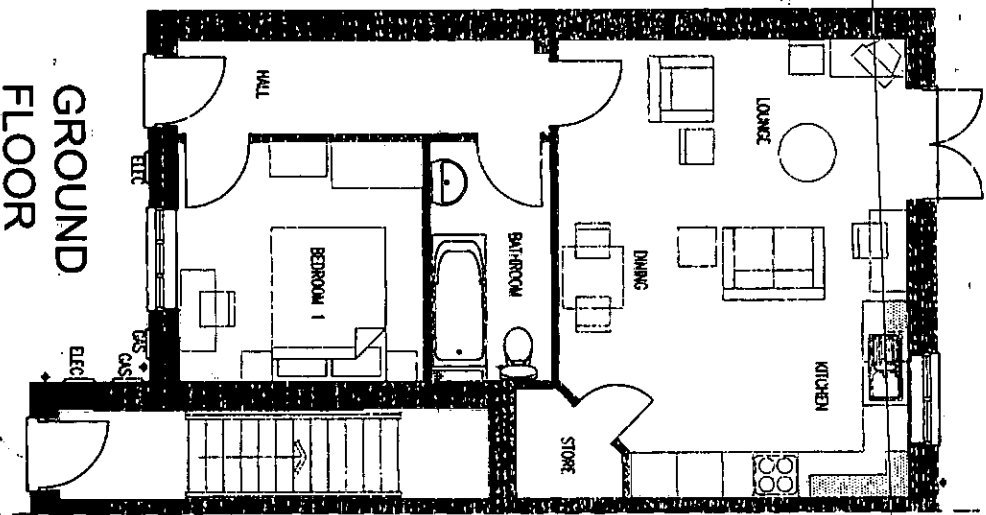
DRN BY	AD	SCALE	JOB REF	DRAWING NUMBER	REV
DATE	July 13	1:500 @ A3	-	Brunswick St/SK05	-



FRONT ELEVATION

REAR ELEVATION

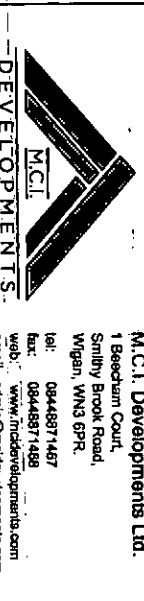
SIDE ELEVATION



1 BED 2 PERSON APARTMENTS - PLOTS 4-11  
Floor Area - 51.00 m<sup>2</sup> (GIA)

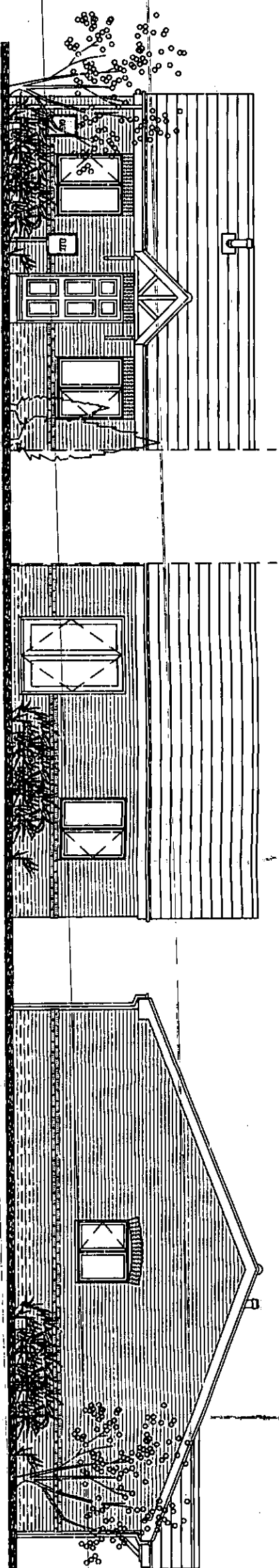
REV	DATE	DESCRIPTION	ARCH	CHK
A	1.8.13	AD		
French door introduced to ground floor to match current planning layout.				

TITLE  
1 BED 2 PERSON APARTMENTS  
51.00 Sq.m (GIA)  
Planning Drawings



M.C.I. Developments Ltd.  
1 Beedham Court,  
Smilly Brook Road,  
Wigan, WNG 6PR.  
Tel: 0844871467  
Fax: 0844871468  
Web: www.mci-developments.com  
Email: edwin@mci-developments.com

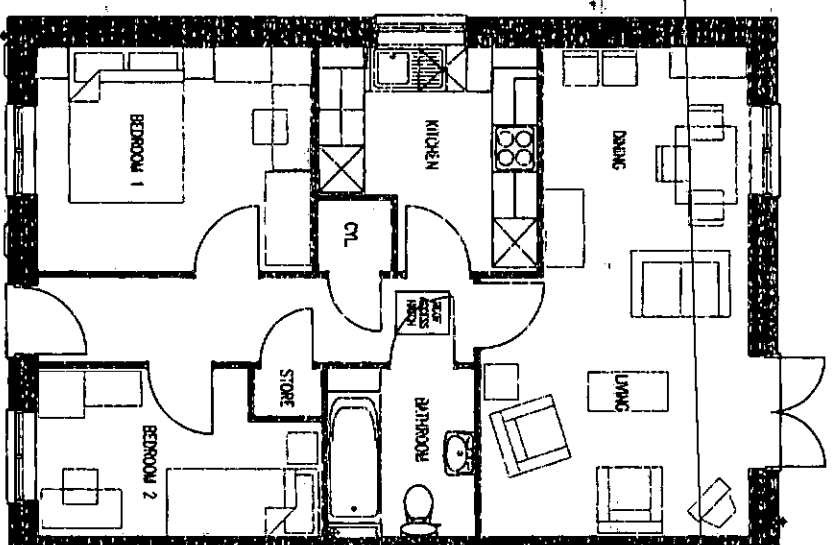
PROJECT Liverpool, Brunswick Street,  
LIVERPOOL  
DIN BY/AD SCALE JOB REF DRAWING NUMBER  
DATE July 13 1:100 BrunswickSV1B2P  
REV A



FRONT ELEVATION

REAR ELEVATION

SIDE ELEVATION



GROUND FLOOR PLAN

2 BED 3 PERSON BUNGALOW  
Floor Area - 59 m<sup>2</sup> (GIA)

REV	DATE	DESCRIPTION	CHECK	DATE

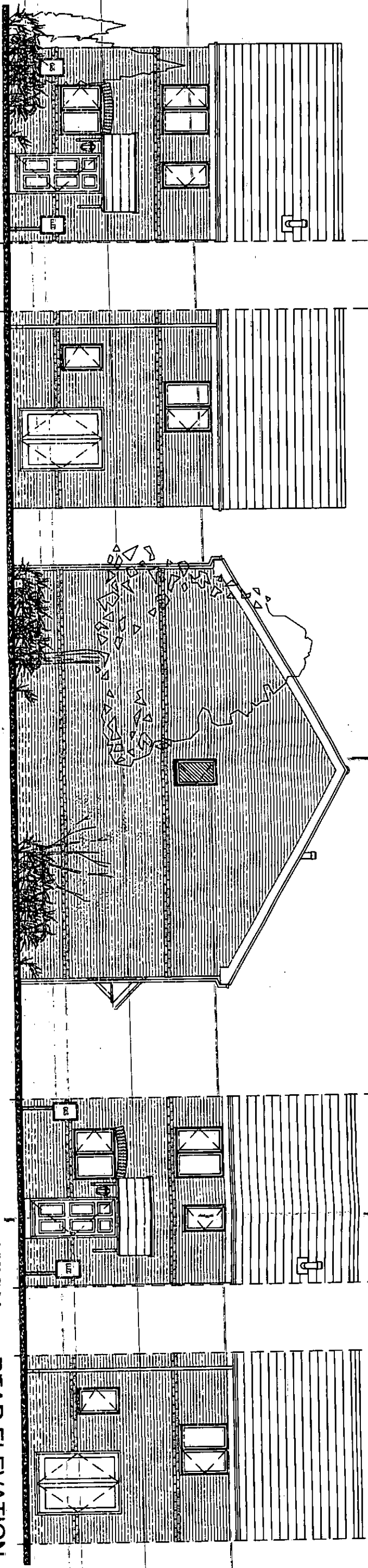
2 BED 3 PERSON BUNGALOW  
59.00 m<sup>2</sup> (GIA)  
Planning Drawings



M.C.I. Developments Ltd.  
1 Boscum Court,  
Smithy Brook Road,  
Wigan, WNS 6PR.  
Tel: 09448971467  
Fax: 09448971468  
Web: www.mci-developments.com  
Email: admin@mci-developments.com

Project Brunswick Street,  
Liverpool.

DATE	SCALE	JOB REF	DRAWING NUMBER	REV
July 13	1:100 @A3		BrunswickStBungalow	



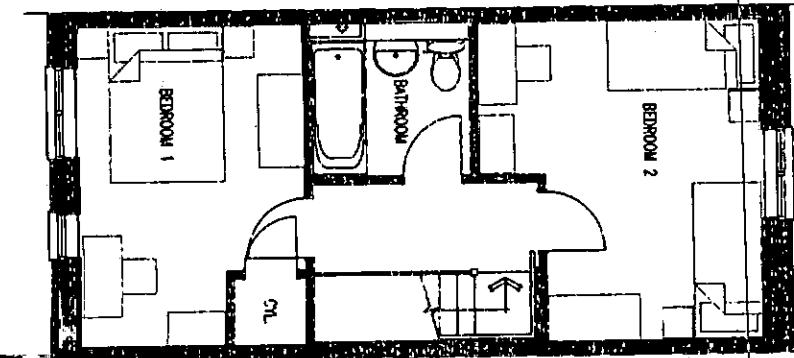
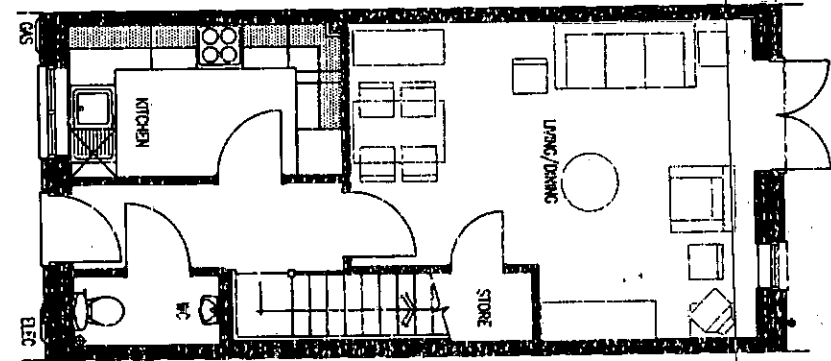
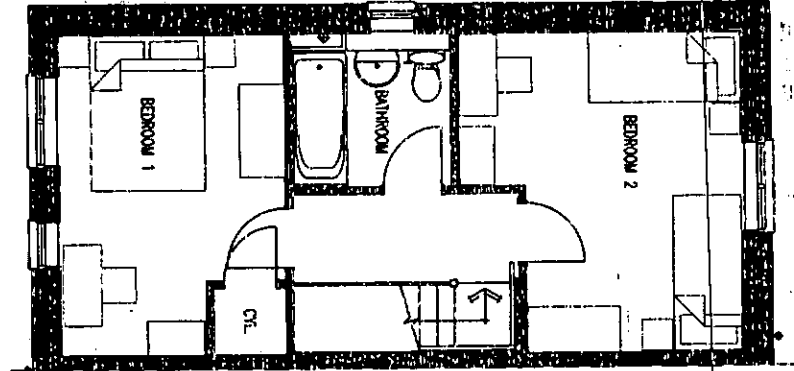
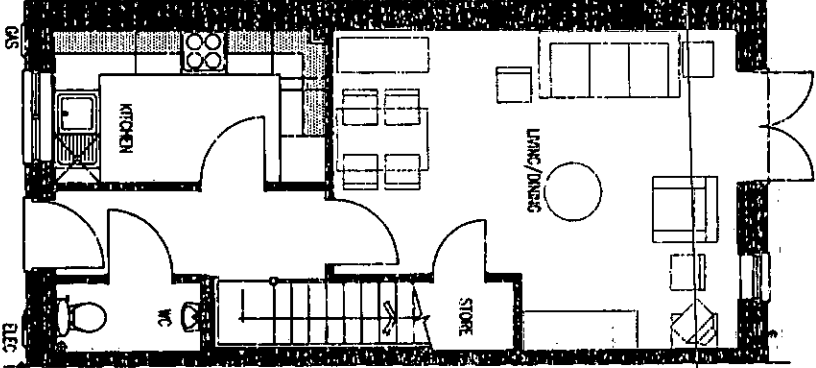
FRONT ELEVATION

REAR ELEVATION

SIDE ELEVATION

FRONT ELEVATION

REAR ELEVATION



GROUND FLOOR PLAN

FIRST FLOOR PLAN

GROUND FLOOR PLAN


FIRST FLOOR PLAN

2 BED 4 PERSON - SEMI - PLOTS 12, 14 & 15  
Floor Area - 76.00 m<sup>2</sup> (GIA)

2 BED 4 PERSON - MEWS - PLOTS 2, 13 & 16  
Floor Area - 76.00 m<sup>2</sup> (GIA)

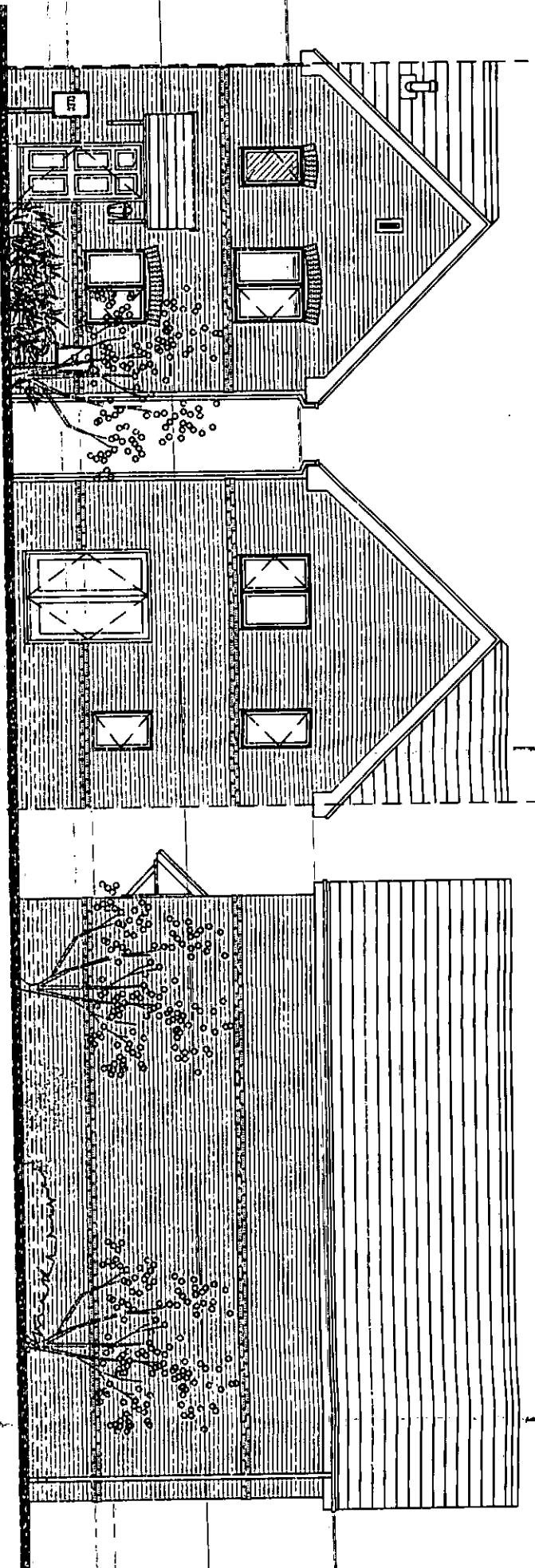
REV	DATE	DESCRIPTION	APPROVED	CHECK
A	1.8.13	AD	French door introduced to ground floor to match current planning layout.	

TITLE	
2 BED 4 PERSON	
76.00 m <sup>2</sup> (GIA)	
Planning Drawings	



M.C.I. DEVELOPMENTS  
1 Beecham Court,  
Smilly Brook Road,  
Wigan, WNS 6PR  
tel: 08448871467  
fax: 08448871468  
web: www.mciddevelopments.com  
email: admin@mcidevelopments.com

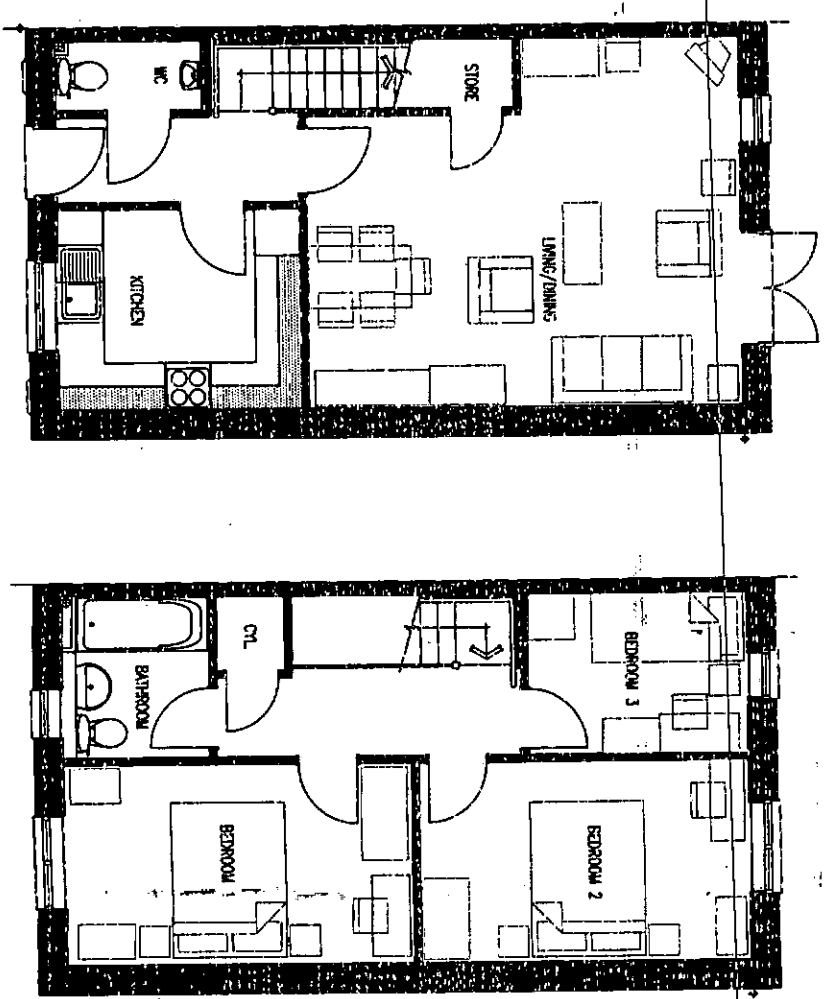
PROJECT	
Brunswick Street, Liverpool.	
DRN BY	AD
SCALE	1:100
DATE	July 13
JOB REF	
DRAWING NUMBER	
BrunswickSV282P/01	
REV	A



FRONT ELEVATION

REAR ELEVATION

SIDE ELEVATION



GROUND FLOOR PLAN

FIRST FLOOR PLAN

3 BED 5 PERSON - PLOTS 1 & 17  
Floor Area - 86.88 m<sup>2</sup> (GIA)

REV	DATE	DESCRIPTION	APPROVED	DATE
1				
2				
3				
4				
5				
6				
7				
8				
9				
10				
11				
12				
13				
14				
15				
16				
17				
18				
19				
20				
21				
22				
23				
24				
25				
26				
27				
28				
29				
30				
31				
32				
33				
34				
35				
36				
37				
38				
39				
40				
41				
42				
43				
44				
45				
46				
47				
48				
49				
50				
51				
52				
53				
54				
55				
56				
57				
58				
59				
60				
61				
62				
63				
64				
65				
66				
67				
68				
69				
70				
71				
72				
73				
74				
75				
76				
77				
78				
79				
80				
81				
82				
83				
84				
85				
86				
87				
88				
89				
90				
91				
92				
93				
94				
95				
96				
97				
98				
99				
100				

**M.C.I. DEVELOPMENTS**

M.C.I. Developments Ltd.  
1 Beecroft Court,  
Smithy Brook Road,  
Wigan, WN3 6PR  
tel: 08448871467  
fax: 08448871468  
web: www.mciddevelopments.com  
email: admin@mciddevelopments.com

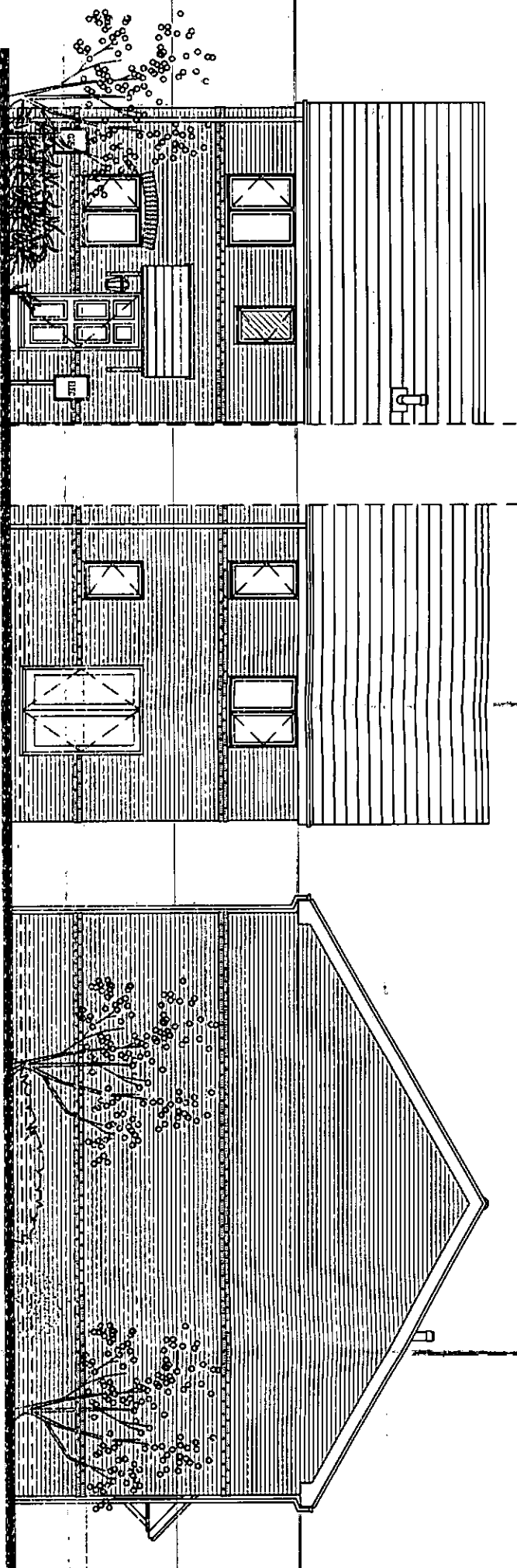
PROJECT Brunswick Street,  
Liverpool.

DATE 13/07/13

SCALE 1:100

DRAWING NUMBER BrunswickSI/3BSP/01

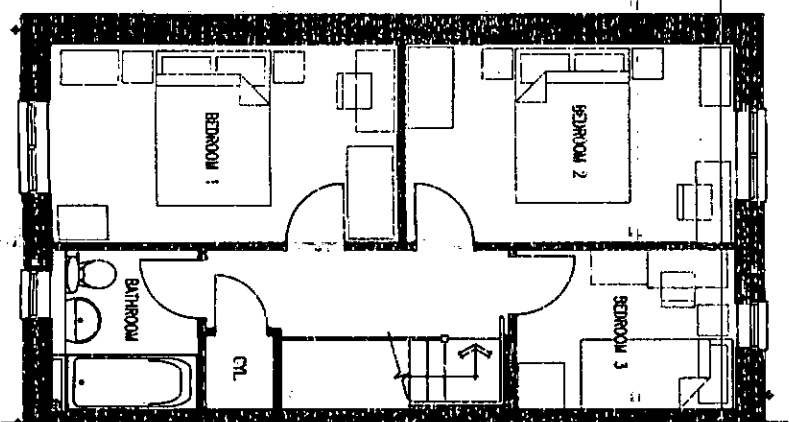
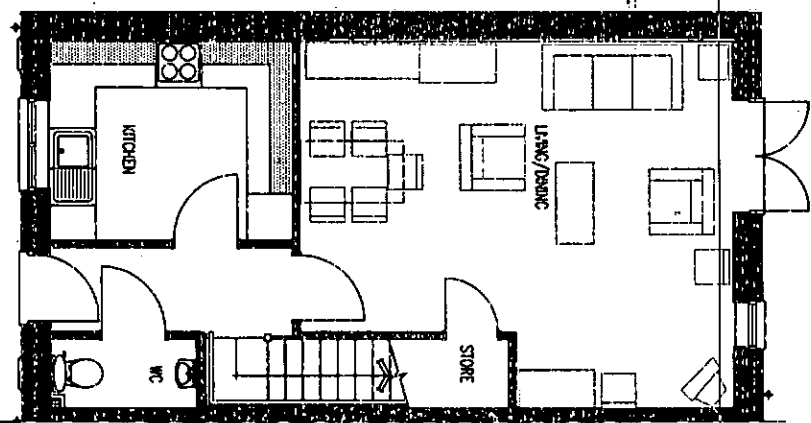
REV A



FRONT ELEVATION

REAR ELEVATION

SIDE ELEVATION



GROUND FLOOR PLAN

FIRST FLOOR PLAN

3 BED 5 PERSON - PLOT 3  
Floor Area - 86.88 m<sup>2</sup> (GIA)

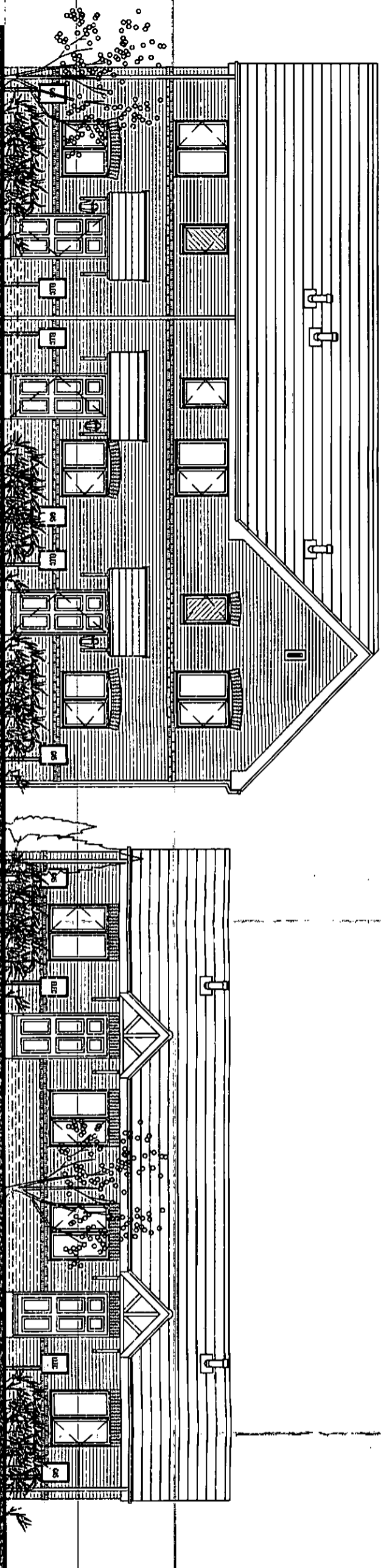
REV	DATE	DRAWN	DESCRIPTION	ARCH	ENG
A	8.13	AD	House type numbering amended to match current planning layout.		

TITLE  
3 BED 5 PERSON  
86.88 m2 (GIA)  
Plannings Drawings



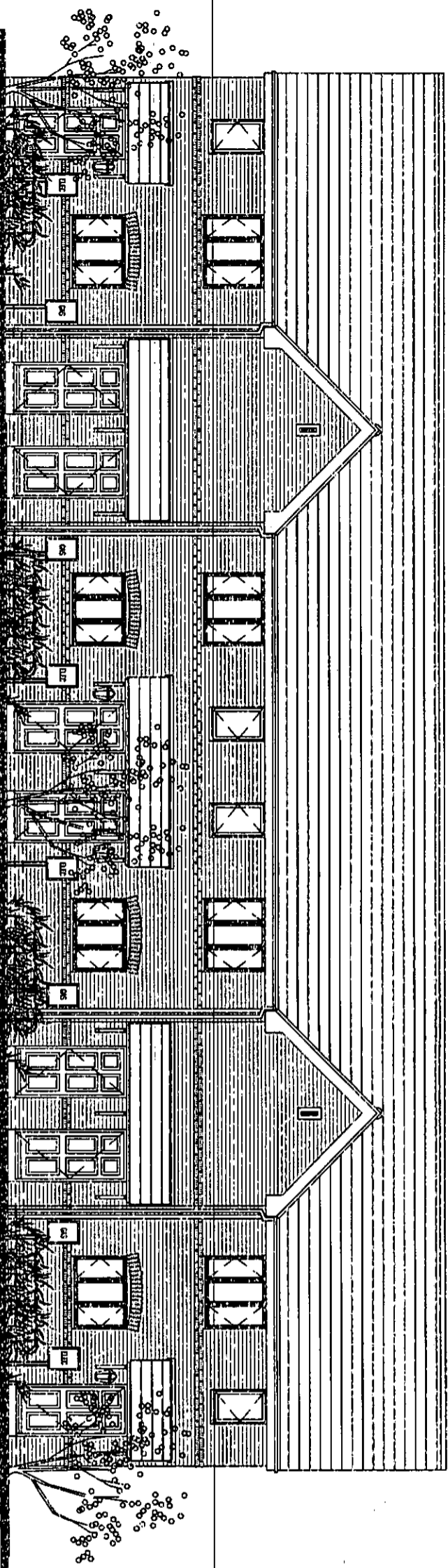
M.C.I. Developments Ltd.  
1 Beecham Court,  
Smithy Brook Road,  
Wigan, WN3 8PR  
tel: 08448971487  
fax: 08448971488  
web: www.mciddevelopments.com  
email: admin@mcidevelopments.com

PROJECT	Brunswick Street, Liverpool.			
DRAWN BY	AD	SCALE	JOB REF	DRAWING NUMBER
DATE	July 13	1:100 @A3		BrunswickSV/3BSP/02
REV	A			

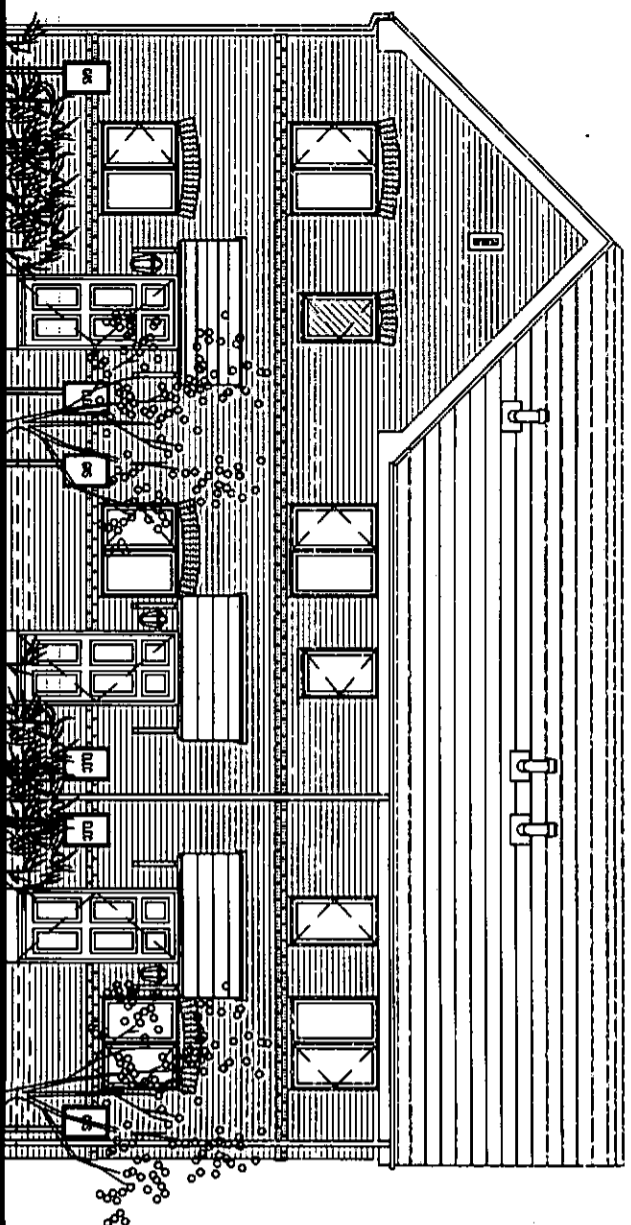


PLOTS 3-1

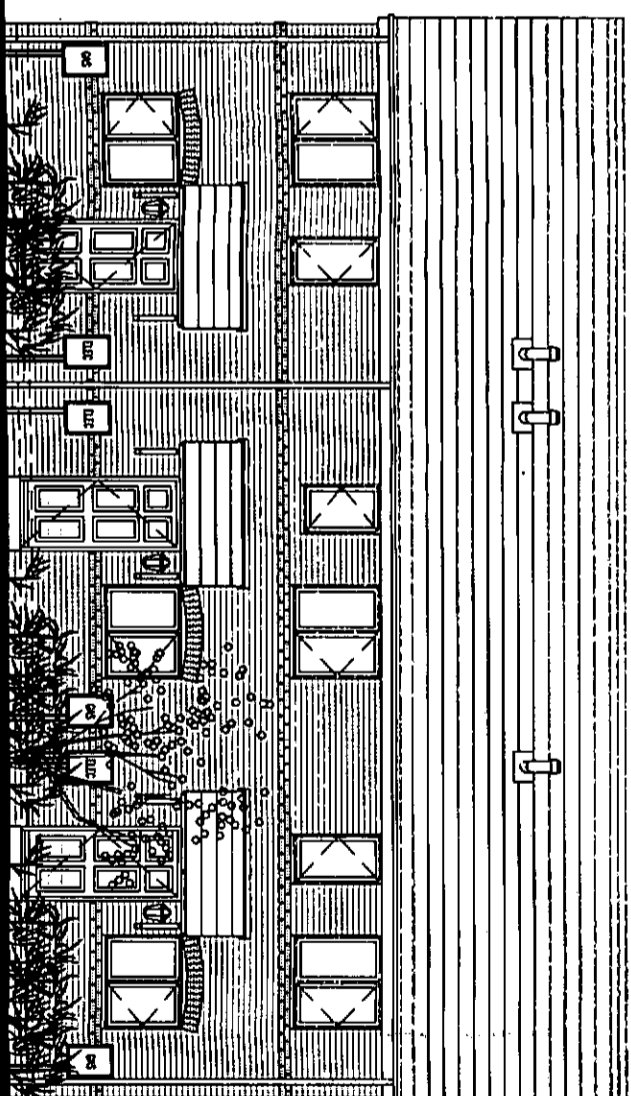
PLOTS 18-19



PLOTS 11-4



PLOTS 17-15



PLOTS 14-12

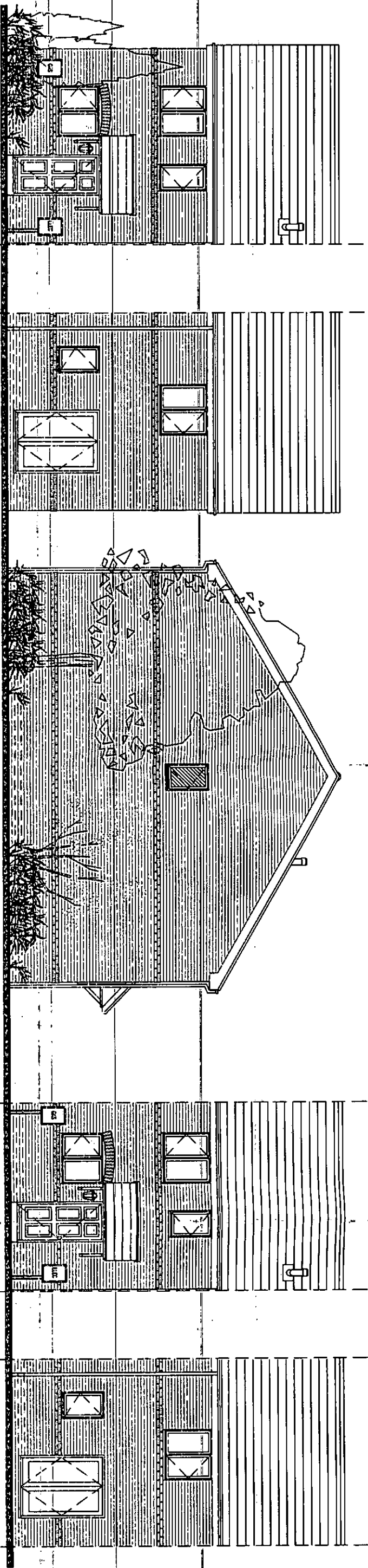
REV	DATE	DRAWN	DESCRIPTION	CHECK	DATE
A	18.13	AD	House type blocks amended to match current planning layout.		

**BLOCK ELEVATIONS**  
**Planning Drawings**



M.C.I. Developments Ltd.  
1 Beecham Court,  
Smilly Brook Road,  
Wigan, WN3 8PR.  
Tel: 08448971487  
Fax: 08448971488  
web: www.mci-developments.com  
email: admin@mci-developments.com

PROJECT	Brunswick Street, Liverpool.			REV
DRAWN BY	AD	SCALE	JOB REF	DRAWING NUMBER
DATE	July 13	1:100 @A3		BrunswickSV/BLOCK
				A



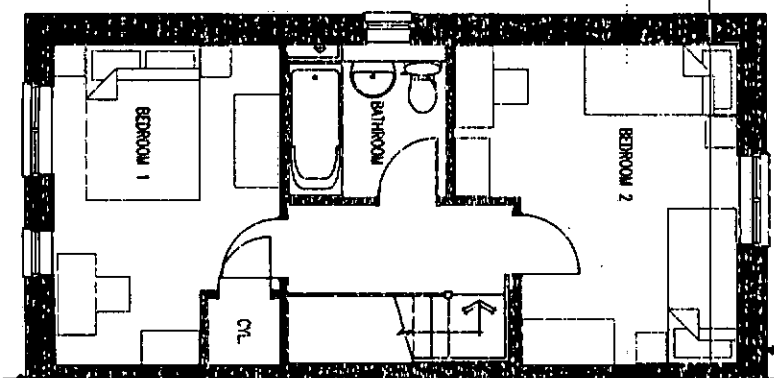
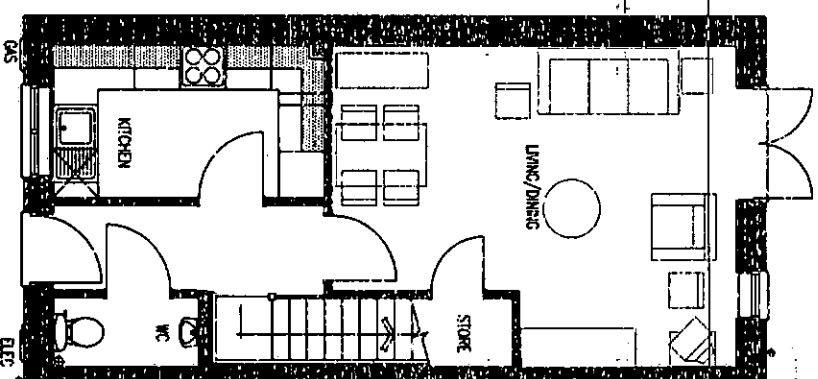
FRONT ELEVATION

REAR ELEVATION

SIDE ELEVATION

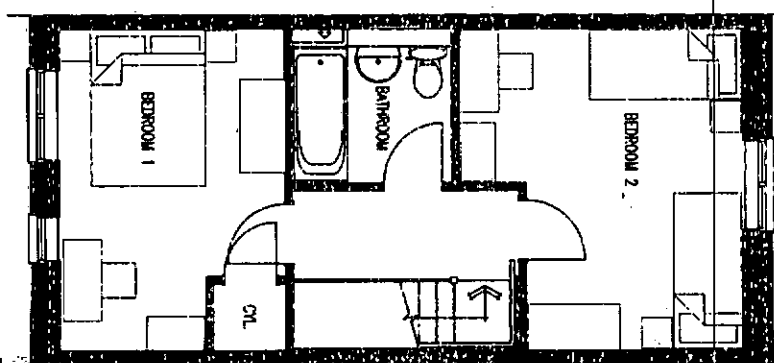
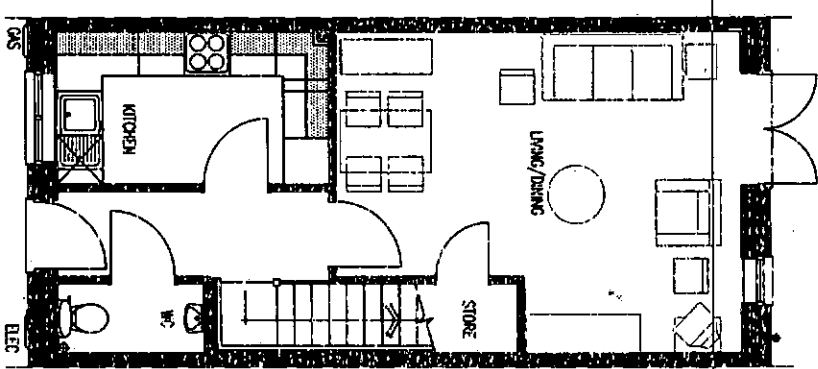
FRONT ELEVATION

REAR ELEVATION



GROUND FLOOR PLAN

FIRST FLOOR PLAN



GROUND FLOOR PLAN

FIRST FLOOR PLAN

2 BED 4 PERSON - SEMI - PLOTS 12, 14 & 15  
Floor Area - 76.00 m<sup>2</sup> (GIA)

2 BED 4 PERSON - MEWS - PLOTS 2, 13 & 16  
Floor Area - 76.00 m<sup>2</sup> (GIA)

A		1.8.13	AD	French door introduced to ground floor to match current planning layout.	ARCH	ENG
REV	DATE	DATE	DRAWN	DESCRIPTION	CHECK	CHECK
TITLE						
2 BED 4 PERSON						
76.00 m2 (GIA)						
Planning Drawings						
M.C.I. Developments Ltd.						
1 Beecham Court,						
Smiddy Brook Road,						
Wigan, WN3 9PR						
tel: 0844871467						
fax: 0844871468						
web: www.mcidevelopments.com						
email: admin@mcidevelopments.com						
PROJECT Brunswick Street,						
Liverpool.						
DRAWN BY	AD	SCALE	JOB REF	DRAWING NUMBER	REV	
DATE	July 13	1:100	@A3	BrunswickSVZBP/01	A	