

DO NOT SCALE

46.600

ALL STORM WATER DRAINAGE 150mm Ø @ 1:100 UNLESS NOTED OTHERWISE

SWIC1 4500  
CL=48.180  
IL=46.900

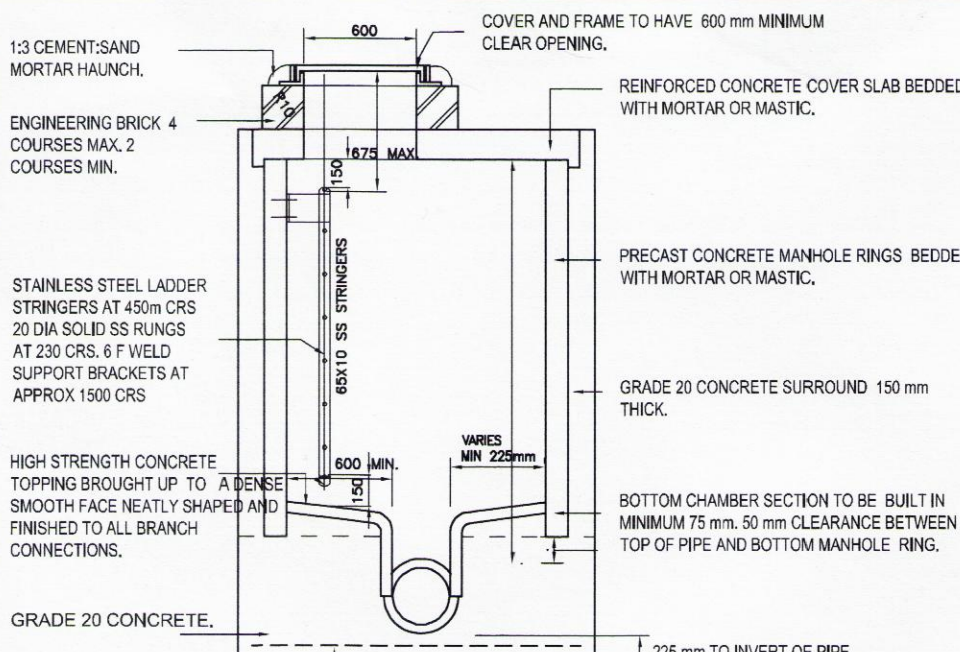
ALL FOUL DRAINAGE 150mm Ø @ 1:80 UNLESS NOTED OTHERWISE

AREA=95m<sup>2</sup>

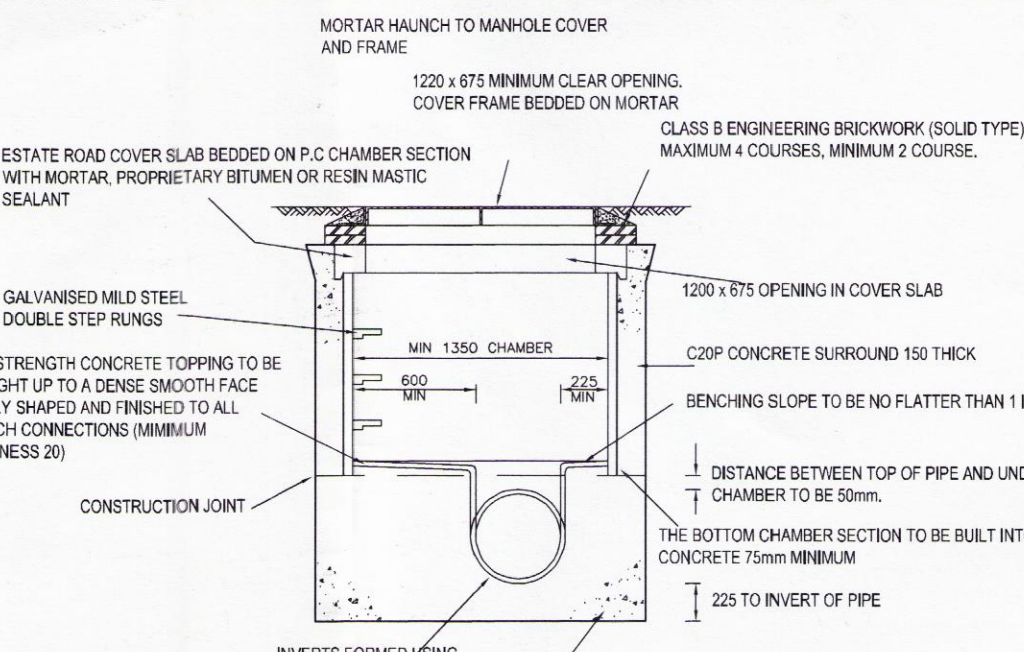
AREA=160m<sup>2</sup>

PHASE 1  
(CONSTRUCTED)

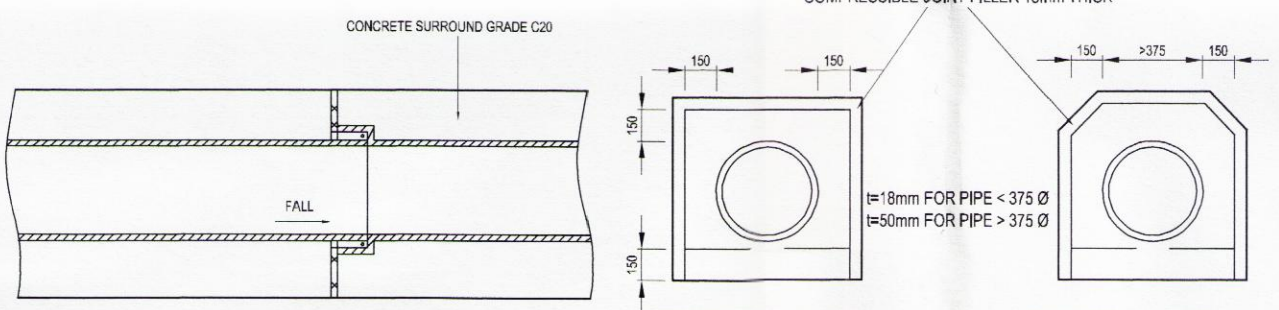
PHASE 2



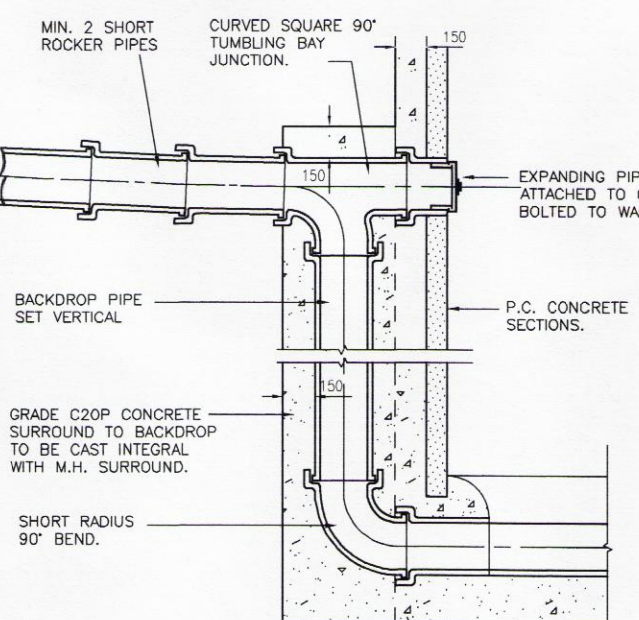
TYPICAL MANHOLE DETAIL DEPTH TO SOFFIT OVER 3000 TYPE A.



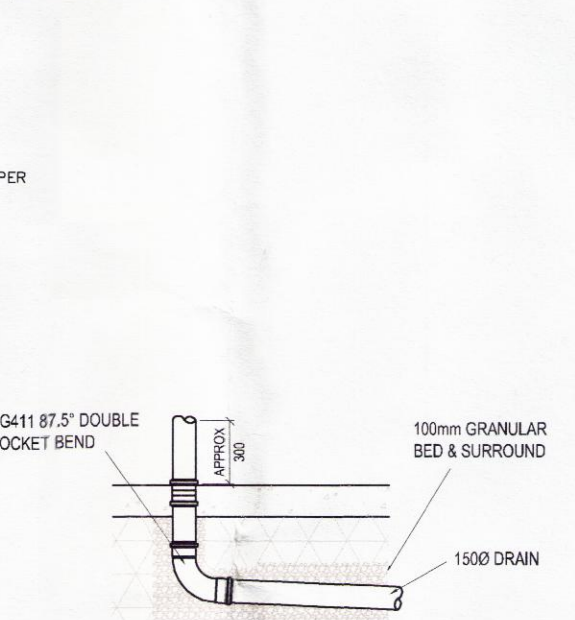
TYPICAL ROAD GULLY DETAIL (23 No OF)



DETAILS OF FLEXIBLE JOINT FOR PIPES WITH CONCRETE SURROUND (150mm THICK)



TYPICAL VERTICAL BACKDROP DETAIL



FOUL WATER POP UP DETAIL

SCALE 1:XX

Notes

**DRAINAGE NOTES**

- This drawing is to be read in conjunction with all relevant architects and engineers drawings and specifications.
- Do not scale this drawing. All details, dimensions and levels are to be checked by the contractor prior to commencement of construction/erection. Any discrepancies are to be reported to the engineer. The contractor is to check all levels and confirm in writing to the engineer prior to the commencement of works.
- All dimensions are in millimeters unless noted otherwise.
- Any existing dimensions noted on this drawing are to be checked by the contractor prior to commencement of works.
- All works are to be in accordance with 'sewers for adoption' - 3rd edition.
- All drainage is to be in accordance with BS5931 - code of practice for building drainage.
- The contractor is responsible for setting out and for the correctness of the position and dimensions of all parts of the works.
- The contractor shall give at least one day's notice to the engineer/building inspector before any formwork is covered with permanent work and before testing any pipeline.
- Verified clay pipes and pipeline fittings for sewers shall comply with the relevant requirements of BS5911:part 100.
- Manhole covers and frames shall comply with the relevant provisions of BS497 part 1.
- All structural concrete is to be grade C35 with a minimum compressive strength of 35N/mm at 28 days. Minimum cement content is to be 200kg/m and maximum free water content ratio is to be 0.6. Maximum aggregate size is to be 20mm nominal.
- Blinding concrete is to be grade C15 with a minimum compressive strength of 15N/mm at 28 days. Minimum cement content is to be 200kg/m and maximum free water content ratio is to be 0.6. Maximum aggregate size is to be 20mm nominal.
- Mass concrete and concrete surrounding drains gullies and manholes is to be grade C25 with a minimum compressive strength of 25N/mm at 28 days. Minimum cement content is to be 0.55. Maximum aggregate size is to be 20mm nominal.
- All brickwork below dpc level is to have a minimum compressive strength of 27N/mm and a maximum water absorption of 7%.
- All mortar below dpc level is to be 1:3 cement:sand (grade 3) - no additives will be permitted without the prior written consent of the engineer.

COORDINATES (CFW)		
POINTS	EASTING	NORTHING
CFW01	335898406.278	389718778.766
CFW02	335902264.078	389712777.077
CFW03	335902744.043	389717986.986
CFW04	335903131.144	389718328.915
CFW05	335907572.126	389717528.057
CFW06	335917088.823	389711365.655
CFW07	335921925.330	389710905.500
CFW08	335922421.290	389716114.434
CFW09	335922441.323	389716535.206
CFW10	335922799.969	389720092.123
CFW11	335923090.529	389723147.229
CFW12	335921107.769	389726797.582
CFW13	335922634.544	38971325.244
CFW14	335923905.540	38971707.513
CFW15	335919781.561	389736428.213
CFW16	335923345.293	389738017.811
CFW17	335924738.443	38971642.497
CFW18	335929675.158	38973478.417
CFW19	335929380.480	38973338.129
CFW20	335932597.839	389733076.827
CFW21	335935695.892	389733594.825
CFW22	335935931.783	389735834.534
CFW23	335901275.599	389716057.956

COORDINATES (CSW)		
POINTS	EASTING	NORTHING
CSW01	335912842.347	389717521.218
CSW02	335914494.205	389734871.123
CSW03	335924438.424	389731278.122
CSW04	335913837.244	389726021.214
CSW05	335929946.857	389736452.568

COORDINATES (PU)		
POINTS	EASTING	NORTHING
PU01	335932789.608	389733056.832
PU02	335930358.761	389733289.987
PU03	335930163.850	389733308.559
PU04	335929634.892	389733398.906
PU05	335925050.562	389733795.372
PU06	335924855.649	389733813.930
PU07	335923382.642	389726215.349
PU08	335922775.452	389719838.187
PU09	335922718.832	389719232.168
PU10	335922690.218	389718942.638
PU11	335918710.896	389730865.068
PU12	335919413.944	389720850.037
PU13	335918775.584	389720885.562
PU14	335917998.676	38972054.769
PU15	335905103.214	389712508.773
PU16	335904754.772	389712539.761
PU17	335903308.499	389712678.292

REV	DATE	REVISION	DETAILS	DRAWN	CHECK	APPROV
B	16.12.2019	AS SHOWN		D.P.	DGS	
A	16.12.2019	PI COORDINATES		D.P.	DGS	
-	16.12.2019	FIRST ISSUE		DGS		
REV	DATE	REVISION	DETAILS	DRAWN	CHECK	APPROV

Carpet Projects

CURRY

CLIENT REFERENCE:

PROJECT: Myrtle Parade 2

DRAWING TITLE: Drainage General Arrangement

DRAWING STATUS: FOR CONSTRUCTION

**ADS Structural**

410 Europa Boulevard  
Gerrin Business Park  
Warrington  
WA5 7TR  
Tel: 01925 551510  
info@adsstructural.co.uk

SCALE 1:100

DOCUMENT NUMBER 15-1387-900

REV B