

- NOTES**
1. Do not scale from this drawing
 2. All dimensions are in meters unless stated otherwise
 3. This drawing is to be read in conjunction with all relevant drawings and documents associated with this project.
 4. All surveyed information including levels and layout is provided by others
 5. All existing and proposed dimensions, levels and locations to be checked and verified by the main contractor on site prior to the commencement of the works and any anomalies reported to the engineer.
 6. All works, workmanship and materials on private drainage to be in accordance with the civil engineering specification for water industry 7th edition published by the water research council.



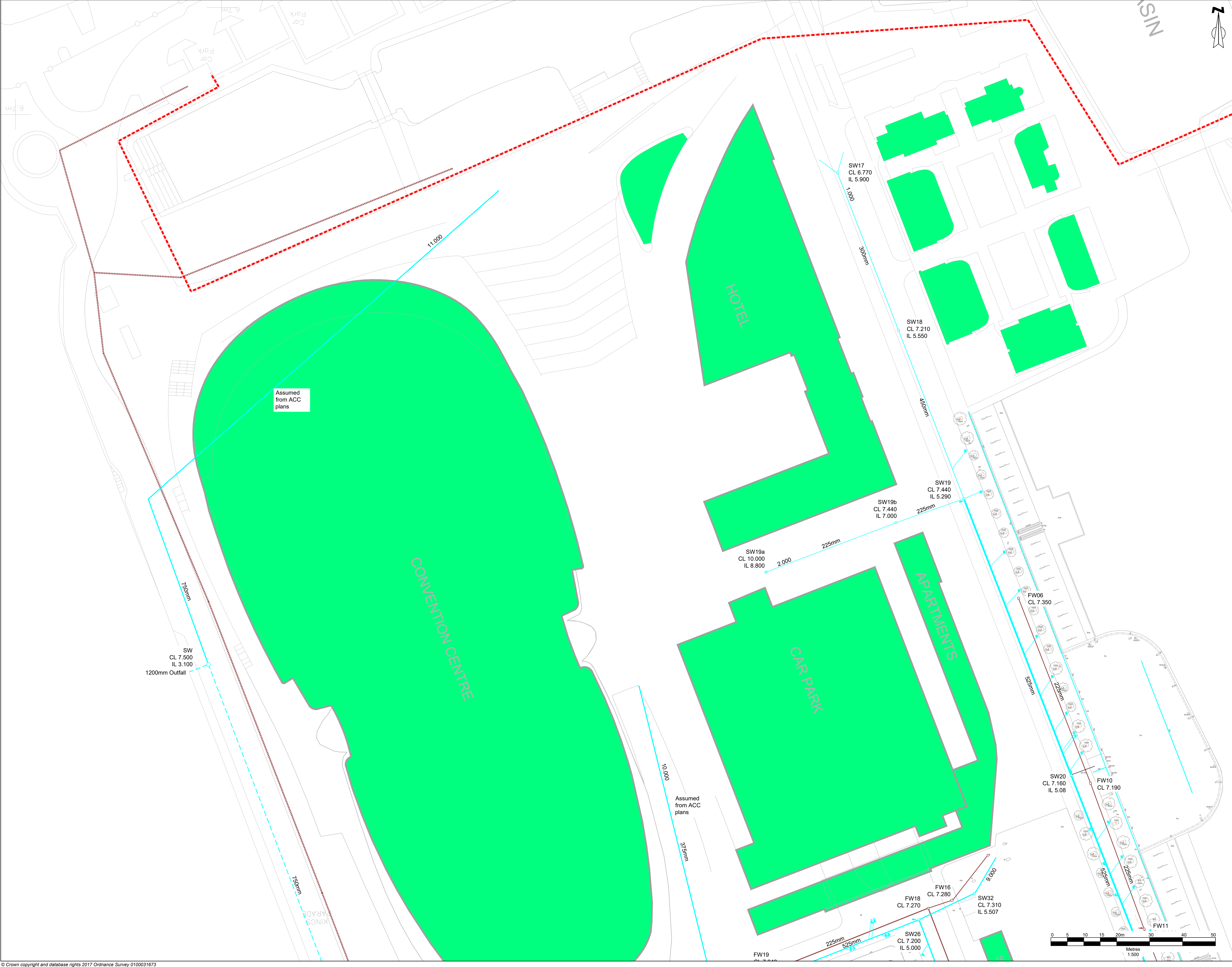
- Drainage**
1. Drainage has been modeled in MicroDrainage based on the following criteria:
M5-60 ~ 20.000
Ratio R ~ 0.400
MADD ~ 2.0
 2. Design life for the site has been assumed to be 60yrs
 3. Designed with a surcharge at 5.45mAOD, mean highwater spring with climate change to 2115 based on EA/DEFRA guidance.
 4. Surface and foul water network has been compiled using data collected from a CCTV survey conducted on the drains and from existing information supplied by ACC and Kings waterfront trust

- Key**
- Existing Surface water drain
 - Existing Foul water drain
 - Existing adopted rising main
 - Existing adopted Surface water sewer
 - Existing adopted Foul water sewer
 - Existing Buildings

PO1	2011/17	First Issue	SM	MJ	MT
REV:	DATE:	DETAIL:	DES:	CHK:	APP:

enzygo
environmental consultants
Samuel House, 5 Fox Valley Way, Stocksbridge, Sheffield, S36 2AA

CLIENT: YPG Developments			
PROJECT: Monarchs Quay			
DRAWING TITLE: Arena outfall - Ex. Drainage			
DRAWN: SM	DESIGNED: SM	CHECKED: MJ	APPROVED: MT
DATE: 20/11/2017		SCALE @ A1: 1:500	
PROJECT NO.: SHF.1380.001.D		DRAWING NO.: 101	
DRAWING STATUS: Information		ISSUE: P01	



- NOTES
1. Do not scale from this drawing
 2. All dimensions are in meters unless stated otherwise
 3. This drawing is to be read in conjunction with all relevant drawings and documents associated with this project.
 4. All surveyed information including levels and layout is provided by others
 5. All existing and proposed dimensions, levels and locations to be checked and verified by the main contractor on site prior to the commencement of the works and any anomalies reported to the engineer.
 6. All works, workmanship and materials on private drainage to be in accordance with the civil engineering specification for water industry 7th edition published by the water research council.



- Drainage
1. Drainage has been modeled in MicroDrainage based on the following criteria:
 - M5-60 - 20.000
 - Ratio R - 0.400
 - MADD - 2.0
 2. Design life for the site has been assumed to be 60yrs
 3. Designed with a surcharge at 5.45m AOD, mean highwater spring with climate change to 2115 based on EA/DEFRA guidance.
 4. Surface and foul water network has been compiled using data collected from a CCTV survey conducted on the drains and from existing information supplied by ACC and Kings waterfront trust

- Key
- Existing Surface water drain
 - Existing Foul water drain
 - Existing adopted rising main
 - Existing adopted Surface water sewer
 - Existing adopted Foul water sewer
 - Existing Buildings

PO1	2011/17	First Issue	SM	MJ	MT
REV:	DATE:	DETAIL:	DES:	CHK:	APP:

enzygo
environmental consultants
Samuel House, 5 Fox Valley Way, Stocksbridge, Sheffield, S36 2AA

CLIENT:
YPG Developments

PROJECT:
Monarchs Quay

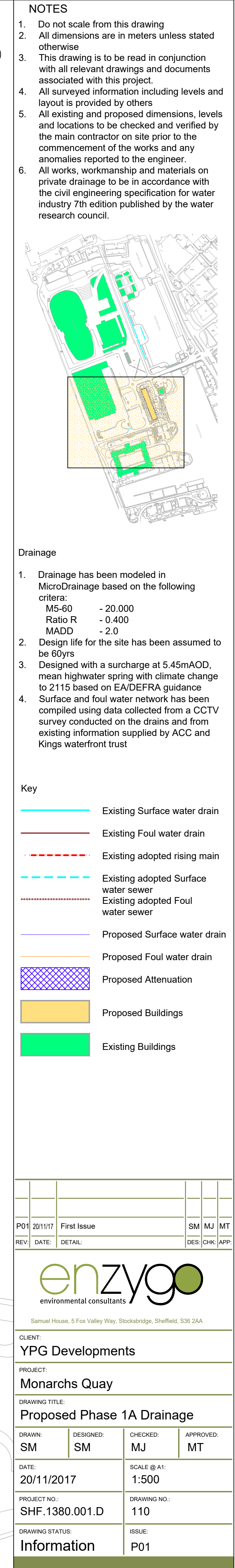
DRAWING TITLE:
Arena outfall - Ex. Drainage

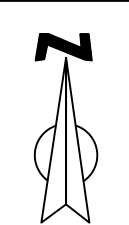
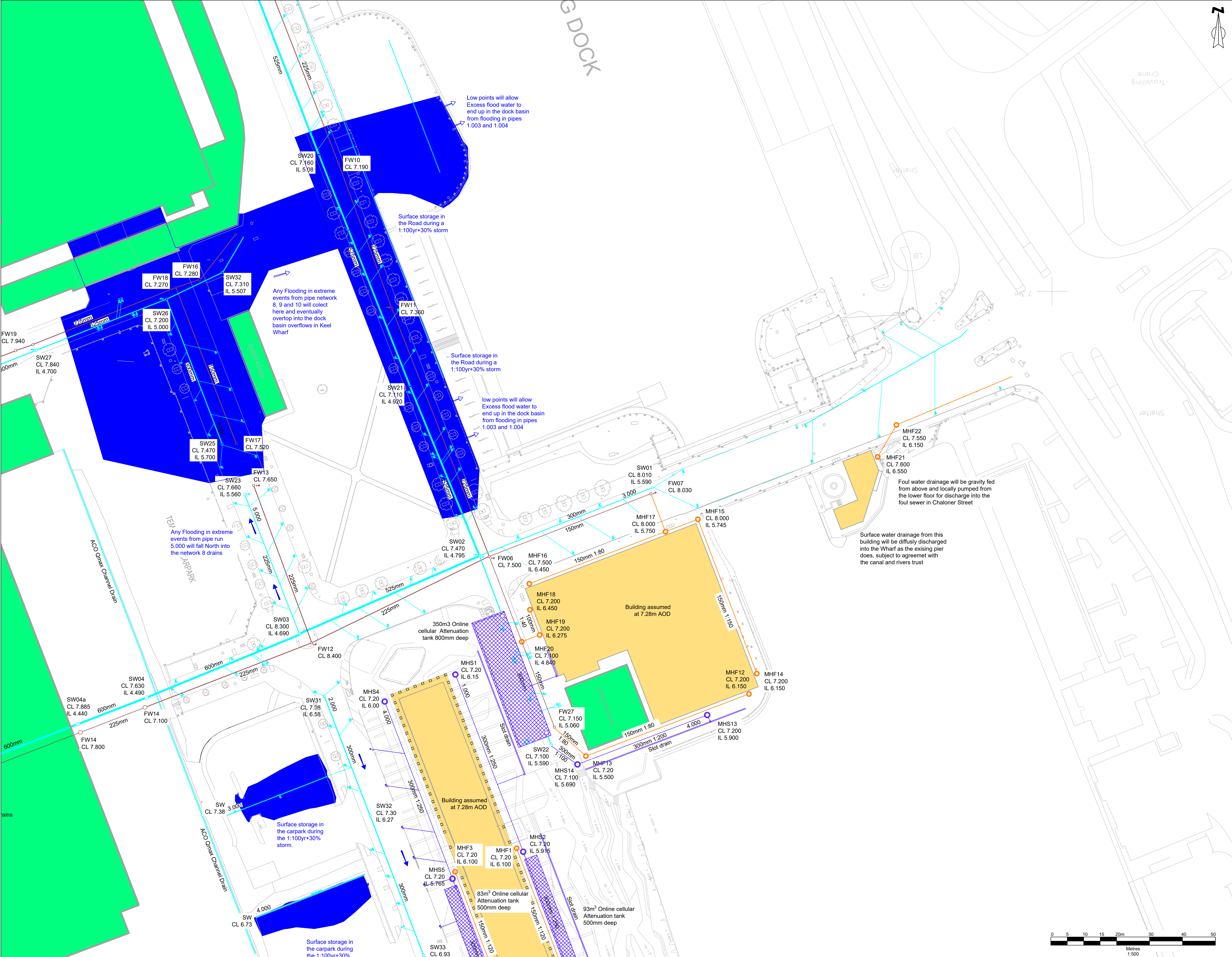
DRAWN: SM	DESIGNED: SM	CHECKED: MJ	APPROVED: MT
---------------------	------------------------	-----------------------	------------------------

DATE: 20/11/2017	SCALE @ A1: 1:500
----------------------------	-----------------------------

PROJECT NO.: SHF.1380.001.D	DRAWING NO.: 102
---------------------------------------	----------------------------

DRAWING STATUS: Information	ISSUE: P01
---------------------------------------	----------------------





- NOTES**
1. Do not scale from this drawing
 2. All dimensions are in meters unless stated otherwise
 3. This drawing is to be read in conjunction with all relevant drawings and documents associated with this project.
 4. All surveyed information including levels and layout is provided by others
 5. All existing and proposed dimensions, levels and locations to be checked and verified by the main contractor on site prior to the commencement of the works and any anomalies reported to the engineer.
 6. All works, workmanship and materials on private drainage to be in accordance with the civil engineering specification for water industry 7th edition published by the water research council.



- Drainage**
1. Drainage has been modeled in MicroDrainage based on the following criteria:
M5-60 -20.000
Ratio R -0.400
MADD -2.0
 2. Design life for the site has been assumed to be 60yrs
 3. Designed with a surcharge at 5.45mAOD, mean highwater spring with climate change to 2115 based on EA/DEFRA guidance
 4. Surface and foul water network has been compiled using data collected from a CCTV survey conducted on the drains and from existing information supplied by ACC and Kings waterfront trust

- Key**
- Existing Surface water drain
 - Existing Foul water drain
 - Existing adopted rising main
 - Existing adopted Surface water sewer
 - Existing adopted Foul water sewer
 - Proposed Surface water drain
 - Proposed Foul water drain
 - Proposed Attenuation
 - Proposed Buildings
 - Existing Buildings
 - Area of surface flooding in a 1:100yr+30% storm

P03	28/03/18	Car Park removed	SM	MJ	MT
P02	04/01/18	Surface flooding indicated	SM	MJ	MT
P01	20/11/17	First Issue	SM	MJ	MT
REV:	DATE:	DETAIL:	DES:	CHK:	APP:



CLIENT: YPG Developments			
PROJECT: Monarchs Quay			
DRAWING TITLE: Proposed Phase 1B Drainage			
DRAWN: SM	DESIGNED: SM	CHECKED: MJ	APPROVED: MT
DATE: 20/11/2017		SCALE @ A1: 1:500	
PROJECT NO: SHF.1380.001.D		DRAWING NO.: 121	
DRAWING STATUS: Information		ISSUE: P03	

