

16F/1559
23.06.16

Cilla



Cilla Black Statue
Design and Access Statement

June 2016

Contents

1.0 Location

2.0 Background and context

3.0 Description of the statue

4.0 Characteristics of the site and setting

5.0 Planning Policy Statement

6.0 Access Statement

7.0 Summary

1.0: Location

This application seeks planning permission to install a statue of Cilla Black on Mathew Street, outside the iconic Cavern Club where Cilla started out as a cloakroom girl and later performed there on stage on her road to stardom.



Figure 1: Proposed location on Mathew Street

2.0: Background and Context

Cilla Black (OBE) was one of Britain's most successful and best-loved entertainers of all time. Born Priscilla Maria Veronica White on the 27th May 1943, she grew up in a musically oriented household in Liverpool. She had 19 UK 'Top 40' singles (including two number 1 hits), released 15 studio albums, sold out concert venues around the world and presented many iconic British TV shows, whilst bringing up three sons with her husband, Bobby Willis. Cilla passed away on 1st August 2015, aged just 72.

Cilla's family are donating this statue as a gift to the people of Liverpool and as a memorial to their mum.

The location of the statue - on Mathew Street, outside the iconic Cavern Club – is a natural choice. It is where Cilla started out as a cloakroom girl and where she later performed on stage on her road to stardom.

It is important that public art projects are site-specific and respond to the context of their location. Locating the statue of Cilla here, close to the original entrance to the Cavern Club with the historic information panel on the opposite side of Mathew Street, provides the perfect context for her as a singer. It also links to the strong music heritage of Liverpool which is being promoted through the recent designation of Liverpool as a UNESCO City of Music and to the imminent opening of 'The British Music Experience' museum which will be housed in the ground floor of the Cunard Building.



Figure 2: Images of Cilla Black and in the Cavern Club in the early 1960's

3.0 Description of Statues

The statue has been sculpted by Emma Rodger and Andy Edwards and cast in bronze by Castle Fine Arts Foundry of Liverpool. The configuration of the statue was inspired by the 'classic pose' of Cilla throughout her career as singer and entertainer.

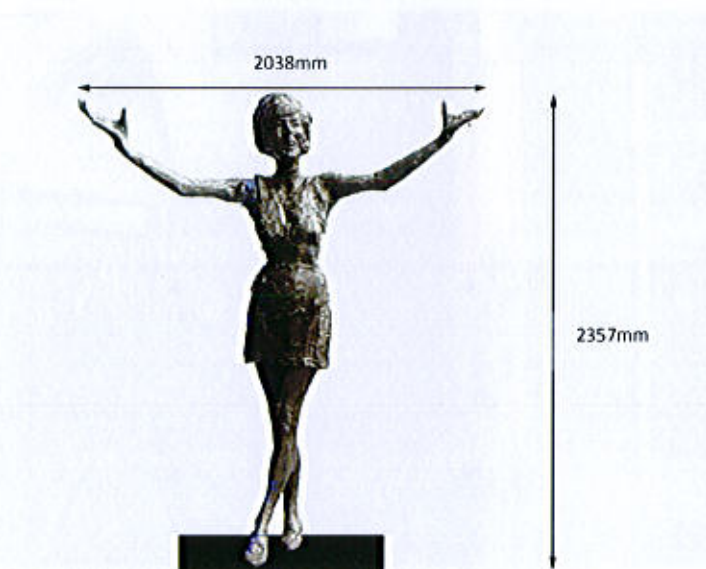


Figure 3: Illustration of composition and dimensions of the statue (©Emma Rogers)

The figure will stand at ground level and will measure approximately 2357mm in height, with a span between the outstretched arms of approximately 2038mm. The statue will weigh approximately 150kg.

The statue will be positioned with the feet at ground level (without a significant plinth) to allow people to interact directly with the statue.

An interpretation plaque is proposed. It is anticipated that the detail of the plaque will be agreed through a condition attached to the planning permission.

The foundation detail has is being designed by structural engineers to ensure appropriate impact and load bearing thresholds. The final illustrations of the foundation design can be provided. An engineering certificate can also be provided at completion to confirm the suitability of the foundation and connection design.

The statue will have 'hidden' detailing in the fabric of the dress which will allow more of Cilla's story to unfold and encourage greater interaction with the statue.

The images below illustrate how the statue will look in position (note: plinth detailing will differ from what is illustrated).



Figure 4: Illustration of the statue in position – looking towards the original Cavern entrance (©Emma Rogers)

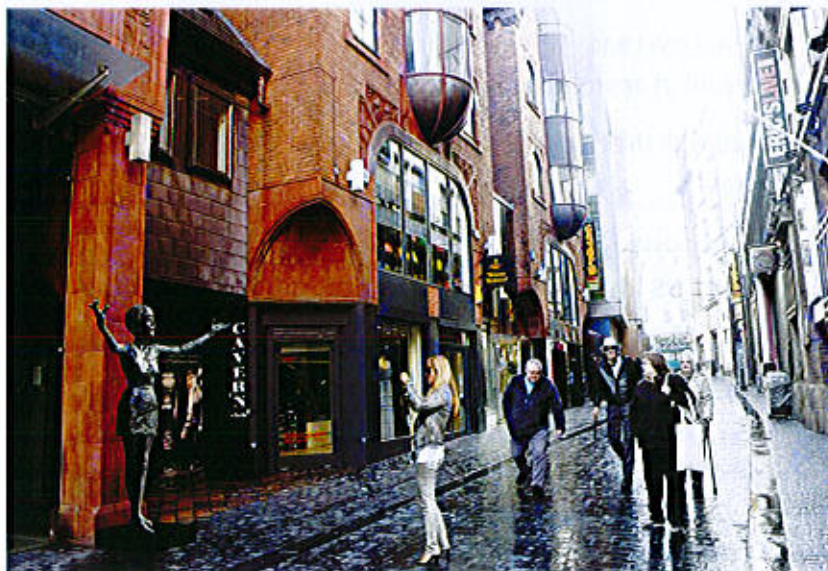


Figure 5: Illustration of the statue in position – looking towards North John Street (©Emma Rogers)

4.0 Characteristics of the Site and Setting

The Cavern Quarter is a focal point for history and music culture with a wide selection of cafes, bars, pubs and clubs which are concentrated around the Mathew Street area.

The proposed location for the statue is immediately outside the stone plinth between the original Cavern Club entrance and the entrance to Cavern Walks on Mathew Street.

The original Cavern Club entrance is recessed from the building line. There are interpretation boards and historic pictures of the original Cavern Club within this space, which includes the fire escape from the new Cavern, and also a glazed panel to the foyer of the Cavern Quarter. The statue will not obstruct access to either the interpretation material or the fire escape doorway.

Cavern Walks is a boutique arcade comprising a collection of independent retailers and designer brands including Cricket, Vivienne Westwood, Boudoir Boutique, Weavers Door and Lola Loves. Cavern Walks also has an entrance onto Harrington Street. The statue will not obstruct access to Cavern Walks from Mathew Street.



Figure 6: Detailed location of statue

5.0 Planning Policy Statement

Mathew Street is designated as a 'Mixed Use Area' (E6) in the existing UDP.

The site also falls within the Castle Street Conservation Area. This proposal is not considered to impact significantly upon the character or appearance of the Conservation Area. Indeed the addition of the statue will add an appropriate feature of interest and quality, for the benefit of shoppers and visitors to the area.

Liverpool City Council's UDP Policy HD 19 relates to Access for All and states that the Council will ensure that:

'consideration is given to the need to ensure ease of access and movement for disabled people between and within public areas by the careful provision, siting and design of parking areas, paths, dropped kerbs, pedestrian crossings, street furniture and open space.'

Regard has been had to the additional guidance provided in the City Council's Design for Access for all SPD in the location and design detail of the statues.

It is therefore considered that this proposal is compliant with relevant planning policy.

6.0 Access Statement

Mathew Street is part of the city centre pedestrian zone. Access is limited to service vehicles (between 11pm – 10am) and to emergency access. The junctions with North John Street and Stanley Street are controlled by retractable bollards. Mathew Street is a one way street (west to east – from North John Street towards Stanley Street) with a shared surface - the central carriageway is denoted by variations in the paved surface.

Mathew Street is a relatively narrow street. The surrounding uses – retail, bars, pubs, cafe's have doorways directly onto the street. The street is moderately busy in the daytime with shoppers and visitors. The area becomes busier during the evenings associated with the pubs, bars and clubs in the immediate vicinity.

There are some existing precedent examples of street furniture and public art – notably the original Cavern historic information panel and the statue of John Lennon, both on the opposite side of Mathew Street.

A stage 1 Road Safety Audit has been undertaken (May 2016) to inform this proposal. The Audit recommended that, "locating the statue fronting the pillar of No.8, Mathew Street, would create minimal obstruction and not in any-way interfere with the visitors entering and leaving the many shops, nightclubs and restaurants in the vicinity." It is therefore considered that the proposed position is acceptable in highway safety terms.

The Audit did identify some concerns regarding the configuration of the statue as the outstretched arms may present opportunity for 'drunken revellers' to climb on the statue. However, this risk would exist with any type of street furniture and the potential hazard may be mitigated by ensuring that the structure and foundation are able to withstand appropriate weights and impact.

The Audit also recommended the statue be placed upon a plinth to allow easy visually impaired people to navigate around the statue easily. However, the potential hazard for visually impaired people is considered to be no more than for other elements of street furniture and as the Audit also acknowledged – the proposed location 'would create minimal obstruction'.

The position of the plaque will ensure it relates well to the statues whilst not interfering with the visual impression. The proposed material and size of the plaque will ensure the text is easy to read and minimise the potential for the plaque to be a potential slip or trip hazard.

7.0 Summary

This proposal to install a statue of Cilla Black on the Matthew Street is consistent with planning policy and will make a positive contribution to the attractiveness and quality of the public realm in the Cavern Quarter.

