

## 6.7 STADIUM ACCESS

The overall circulation strategy and organisation of the building is unchanged from the scheme submitted in December 2019, however due to the revised layout of the building, entrances and circulation routes are slightly different for all user groups. The following sections show how each user group will access and navigate the building.

### 6.7.1 General Admission (GA) Spectators

Level 00

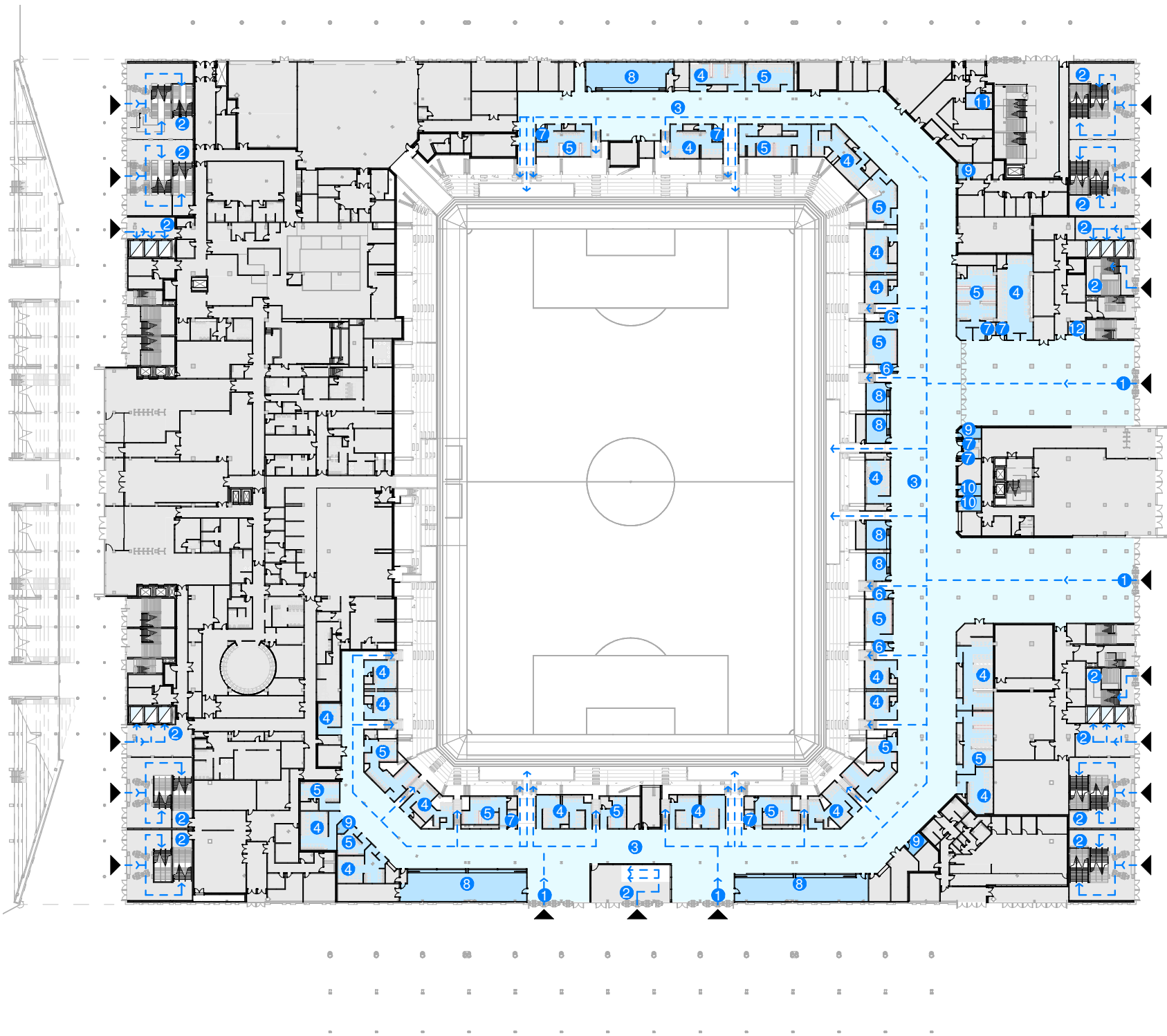
Access to the stadium for GA spectators is very similar to the scheme submitted in December 2019. The entrances for the lower tier are along in east and south facades. The main east entrances have been simplified so that there are two large entrances, rather than three smaller ones. Access to the upper tier is via the corner stairs, corner lift lobbies and the south escalators. Each type of access has a different entry which will be clearly signed from the outside. There has been an increase in the overall number of turnstiles to reduce queuing times and in line with SGSA guidance.

- 1 GA Lower Tier Access
- 2 GA Upper Tier Access
- 3 GA Concourse
- 4 WC Female
- 5 WC Male
- 6 WC Gender Neutral
- 7 WC Accessible
- 8 Concession
- 9 Game Kiosk
- 10 Faith Room
- 11 Changing Places Facility
- 12 Accessible Baby Change with WC

-  Lift
-  Typical Circulation
-  Home Fan Access

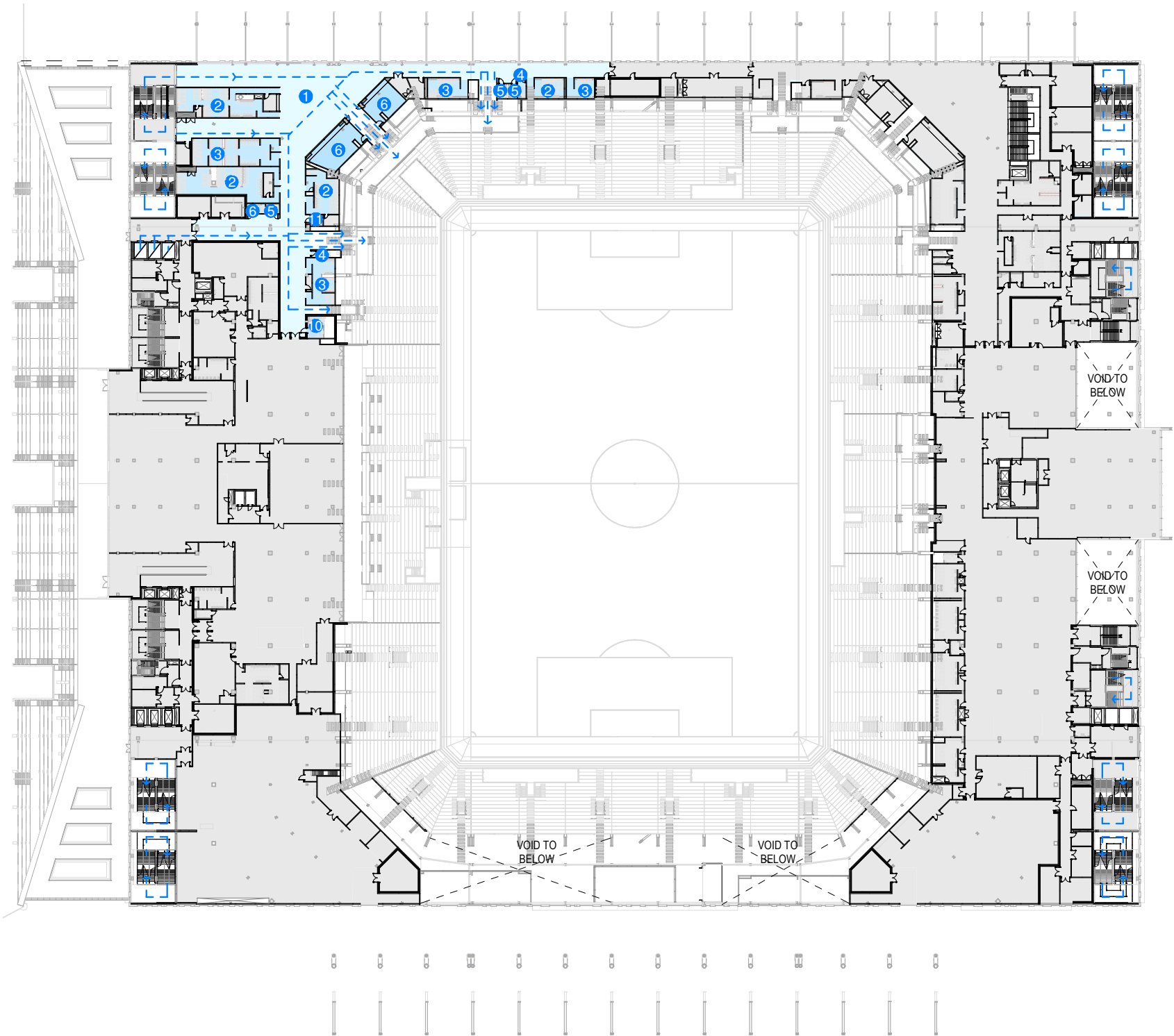
Related sections in the submitted Design & Access Statement:

11.10.4



General Admission (GA) Spectators - Level 01

- 1 GA Concourse
  - 2 WC Female
  - 3 WC Male
  - 4 WC Gender Neutral
  - 5 WC Accessible
  - 6 WC Family
  - 7 Concession
  - 8 Game Kiosk
  - 9 Faith Room
  - 10 Changing Places Facility
  - 11 Accessible Baby Change with WC
- ☐ Lift
- ➔ Typical Circulation



Related sections in the submitted  
Design & Access Statement:

11.10.4

General Admission (GA) Spectators - Level 02

- 1

GA Concourse
- 2

WC Female
- 3

WC Male
- 4

WC Gender Neutral
- 5

WC Accessible
- 6

Concession
- 7

Game Kiosk
- 8

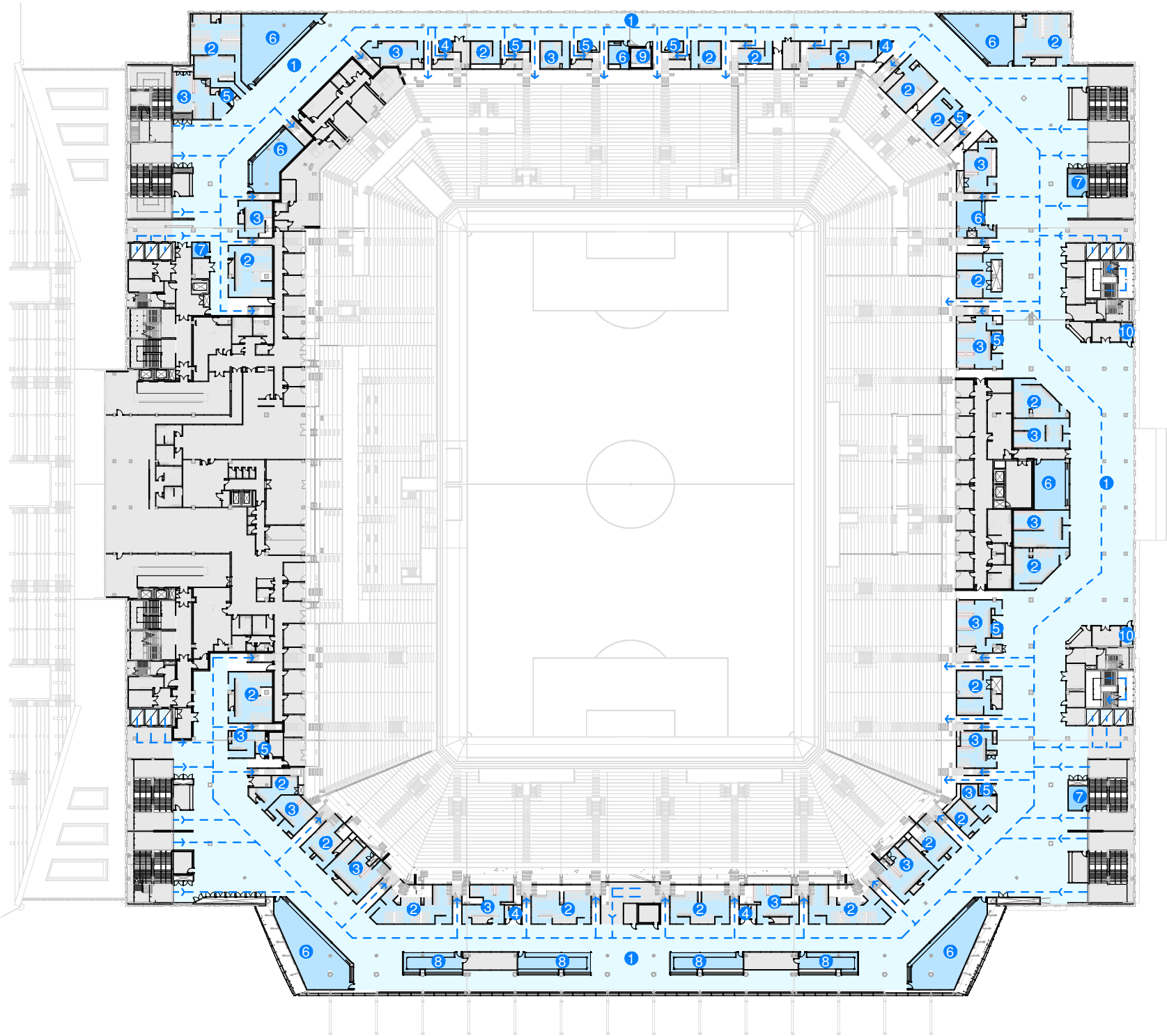
Home Bar
- 9

Changing Places Facility
- 10

Accessible Baby Change with WC

Lift

Typical Circulation



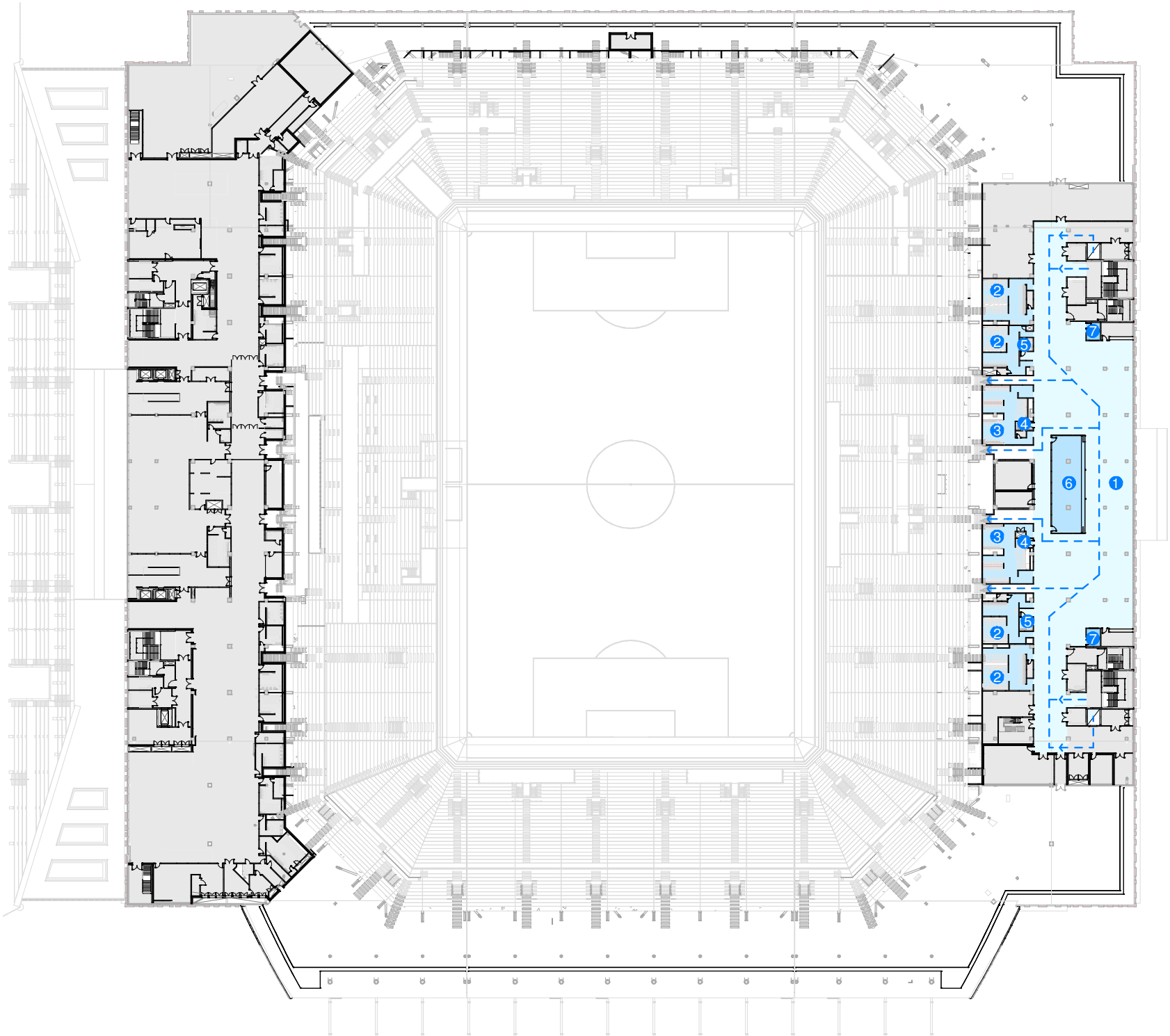
Related sections in the submitted  
Design & Access Statement:  
11.10.4



General Admission (GA) Spectators - Level 03

- 1 GA Concourse
- 2 WC Female
- 3 WC Male
- 4 WC Gender Neutral
- 5 WC Accessible
- 6 Concession
- 7 Game Kiosk

- ☐ Lift
- ➡ Typical Circulation



Related sections in the submitted  
Design & Access Statement:  
11.10.4



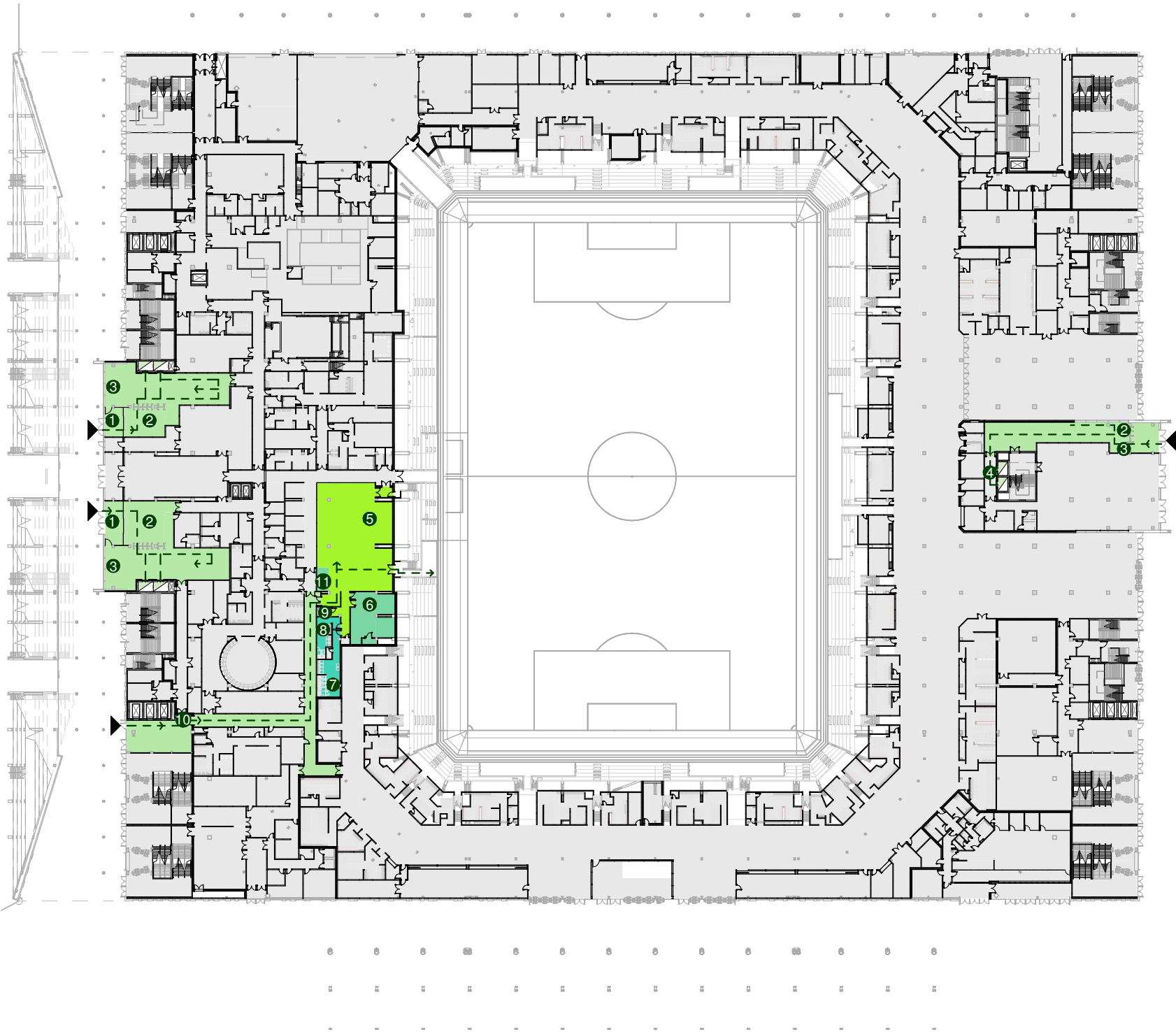
6.7.2 Hospitality

Level 00

Access for hospitality spectators is via the east and west glazed portals, except for those in the tunnel club who enter through another entrance on the west and remain on level 00. Both of the main east and west entrances have escalators and lifts to access the lounges on the floors above, with additional access to stairs if required. Access to the boxes in the east is via the lifts or stairs only, as the east escalator does not serve level 02.

- 1 Lobby
- 2 Hospitality Entry
- 3 Reception
- 4 Hospitality Lift Lobby
- 5 Tunnel Club
- 6 Kitchen
- 7 WC Female
- 8 WC Male
- 9 WC Accessible
- 10 Tunnel Club Entrance
- 11 Service Bar

- ☐ Lift
- ➔ Typical Circulation
- ▶ Hospitality Access



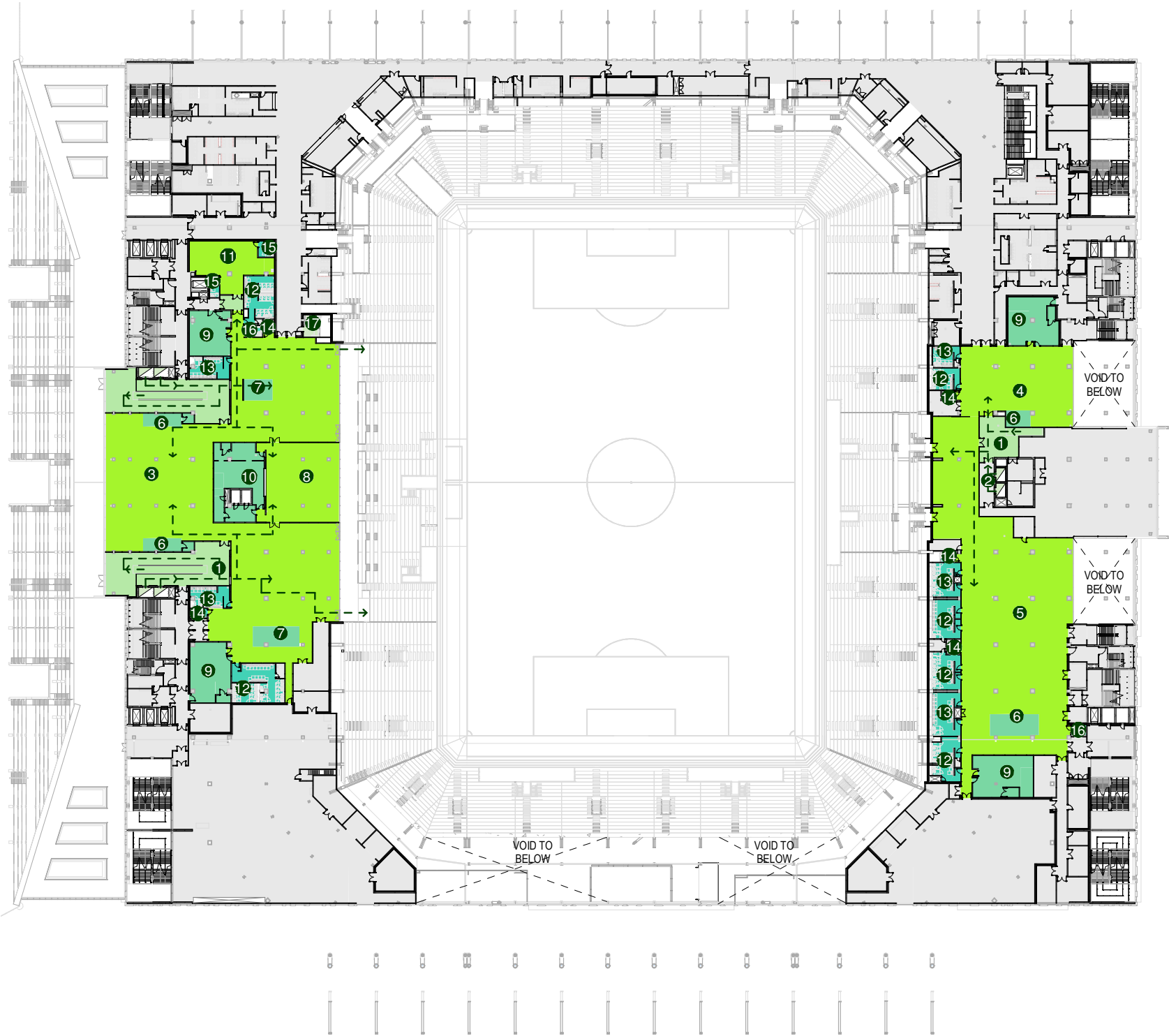
Related sections in the submitted Design & Access Statement:

11.10.5



Hospitality - Level 01

- 1 Hospitality Circulation
  - 2 Lift Lobby
  - 3 West Hospitality Lounge
  - 4 Club Mixed Lounge
  - 5 East Hospitality Lounge
  - 6 Customer Bar
  - 7 Service Bar
  - 8 Pitchside Fine Dining
  - 9 Kitchen
  - 10 Show Kitchen
  - 11 Players Family Lounge
  - 12 WC Female
  - 13 WC Male
  - 14 WC Accessible
  - 15 WC Family
  - 16 Accessible Baby Change with WC
  - 17 Changing Places Facility
- ☐ Lift
- ➔ Typical Circulation



Related sections in the submitted  
Design & Access Statement:  
11.10.5

Hospitality - Level 02

- 1

Hospitality Circulation
- 2

Box Lobby
- 3

Circulation
- 4

North Dining
- 5

Central Dining
- 6

South Dining
- 7

Owner's Box
- 8

Sponsor Box
- 9

Box
- 10

Service Bar
- 11

Kitchen
- 12

Pantry
- 13

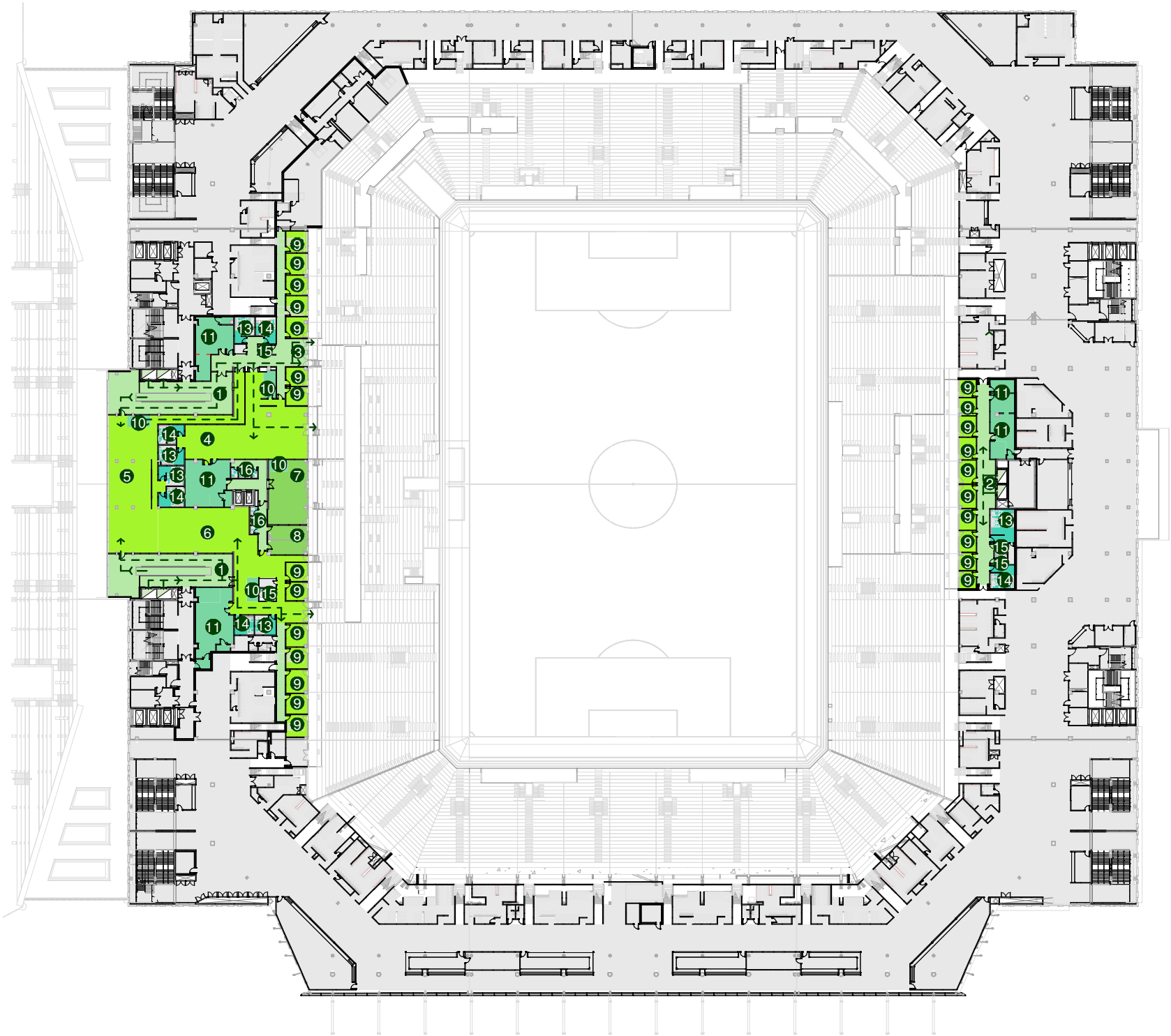
WC Female
- 14

WC Male
- 15

WC Accessible
- 16

WC
- ☐

Lift
- Typical Circulation

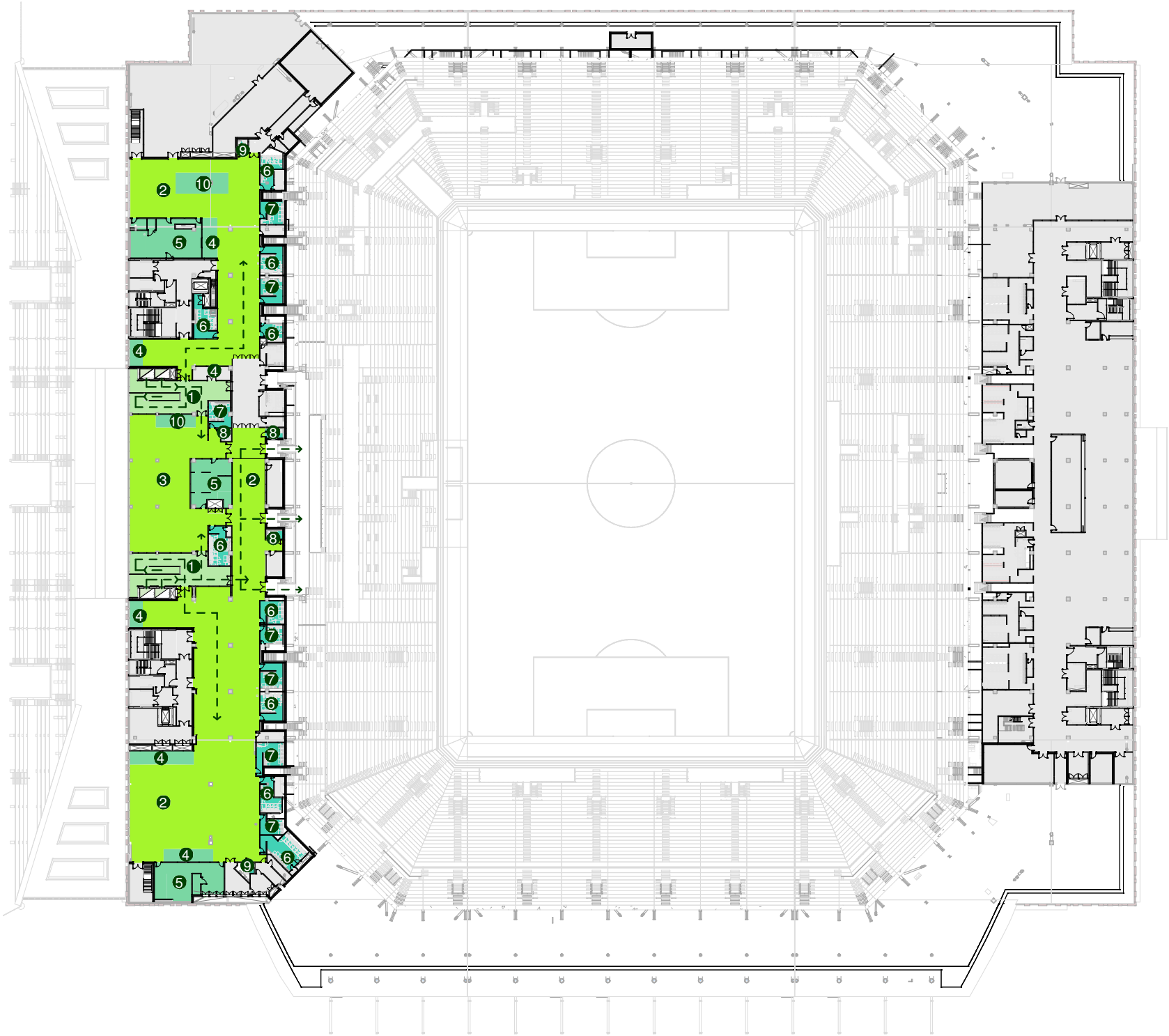


Related sections in the submitted  
Design & Access Statement:  
  
11.10.5



Hospitality - Level 03

- 1 Hospitality Circulation
  - 2 West Hospitality Lounge
  - 3 River View Dining
  - 4 Customer Bar
  - 5 Kitchen
  - 6 WC Female
  - 7 WC Male
  - 8 WC Accessible
  - 9 Accessible Baby Change with WC
  - 10 Service Bar
- ☐ Lift
- Typical Circulation



Related sections in the submitted  
Design & Access Statement:  
11.10.5