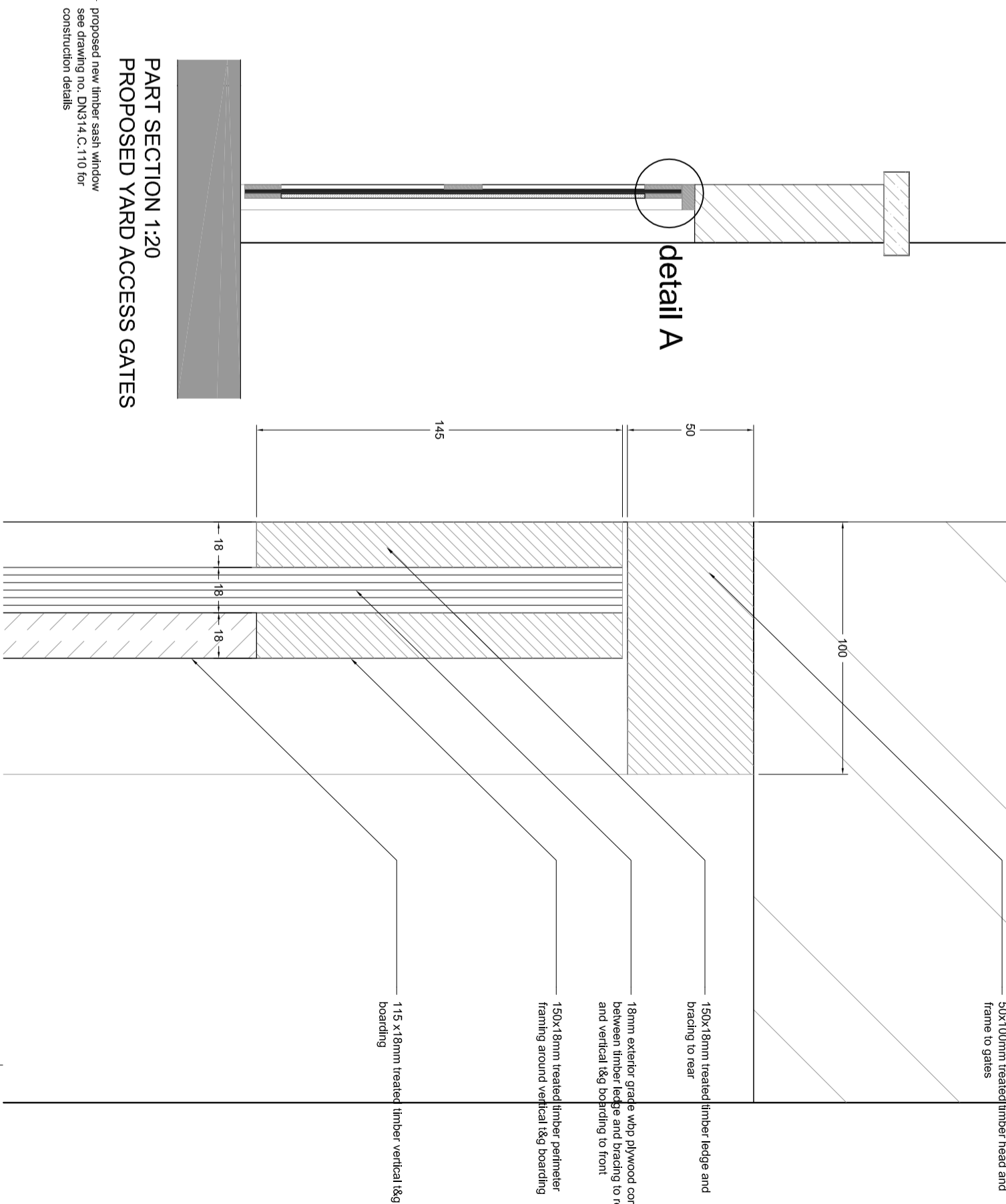
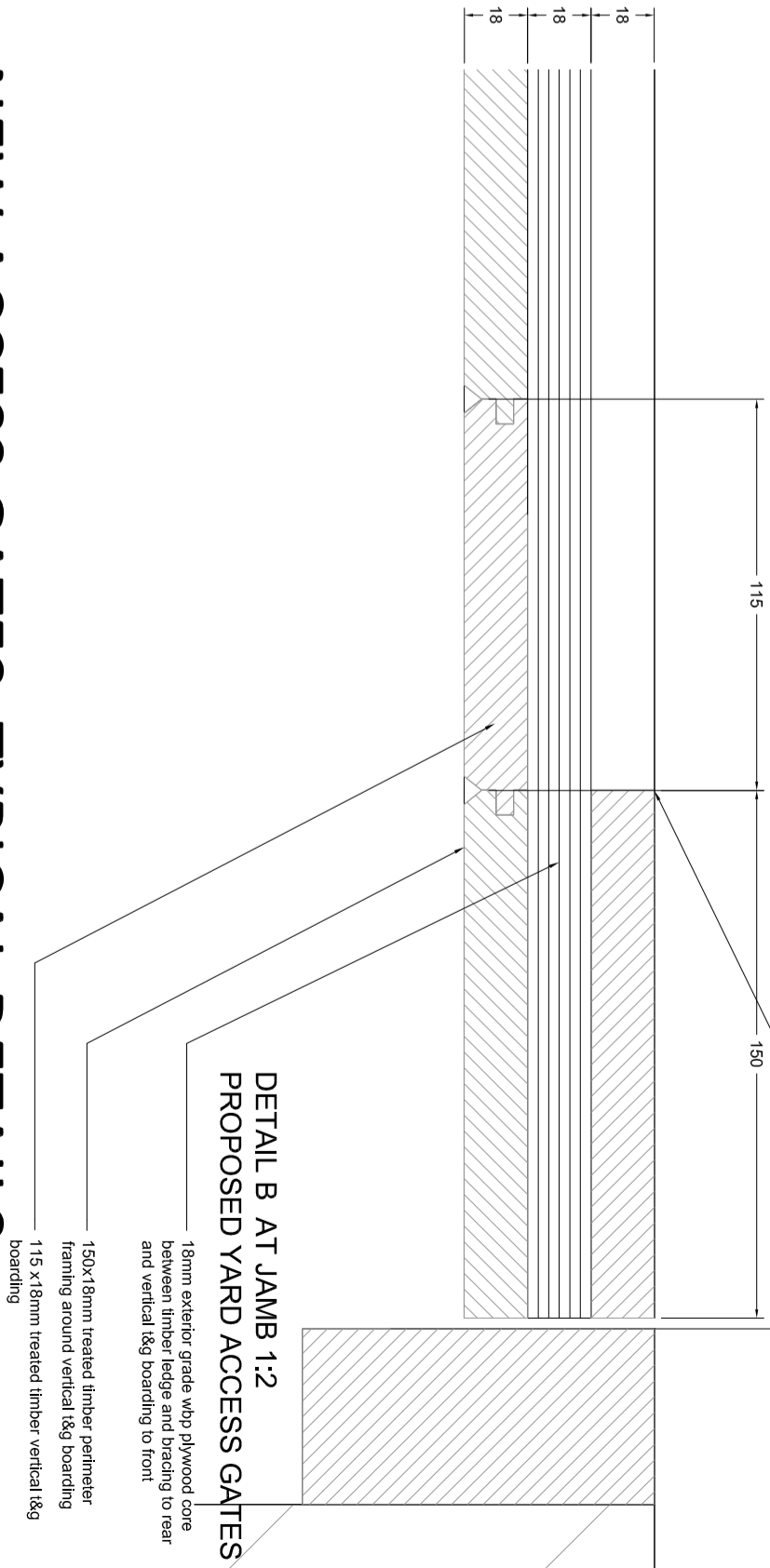


**PROPOSED IRONMONGERY TO GATES**

6No. 300mm heavy duty tee hinges finish black powder coated.  
2No. 150mm brenton padlock bolts finish black powder coated.  
2No. 300mm lockable surface drop bolts finish black powder coated.  
1No. 200mm plain ring gate latch finish black powder coated.



**DETAIL A AT HEAD 1:2**  
**PROPOSED YARD ACCESS GATES**



## NEW ACCESS GATES TYPICAL DETAILS

new windows : bs 2660 range bs 4-046 off white  
existing windows : bs 2660 range bs 4-046 off white  
new windows : silkens cetol hls plus ebony 020  
existing railings : hammerite hammered balck  
cast iron rwg's : hammerite satin black  
: or hammerite smooth dark green  
timber boarding : silkens cetol hls plus ebony 020  
to new gates : or saddolin extra ebony

proposed colour finishes :

**ADDITIONAL INFORMATION RELEVANT TO DISCHARGE OF CONDITIONS ATTACHED TO 16L/1118 23 August 2016**  
**Condition 5**  
see details above.

**Condition 4**  
i. see drawing no. DN314.C.111  
ii. see drawing no. DN341.C.111  
iii. fire protection to ceilings and partitions where required to be provided by 2no. layers of 12.5mm plasterboard and finish skim coat  
iv. new balanced flue located and positioned as indicated. there are no proposed external grilles or cable runs.  
v. existing cast iron rain water goods to be retained where possible. existing cast iron soil pipes to be retained.  
new rain water goods where necessary to be in cast iron section and profiles to match existing.  
existing and new cast iron rain water goods and existing soil pipes to be finished painted hammerite satin black