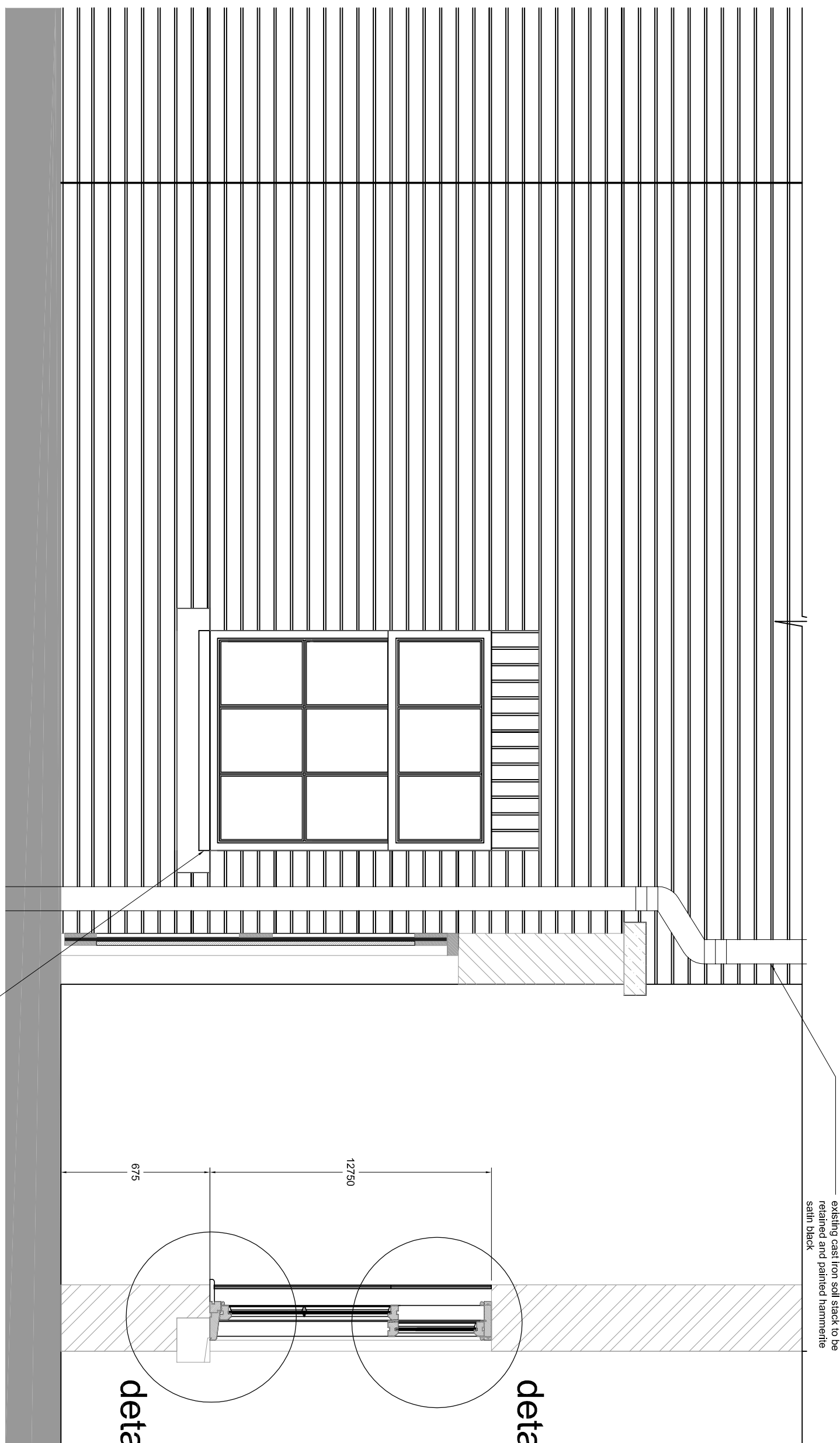
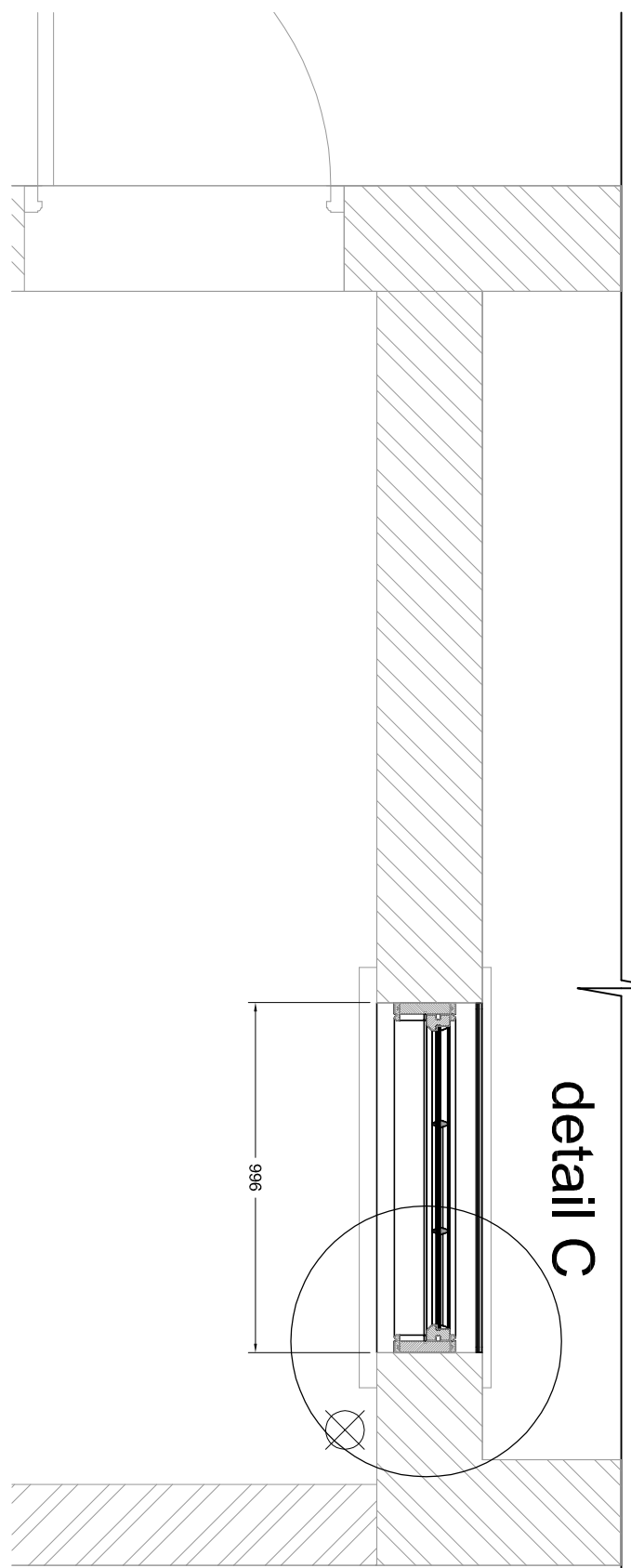


NEW SASH WINDOW TYPICAL DETAILS



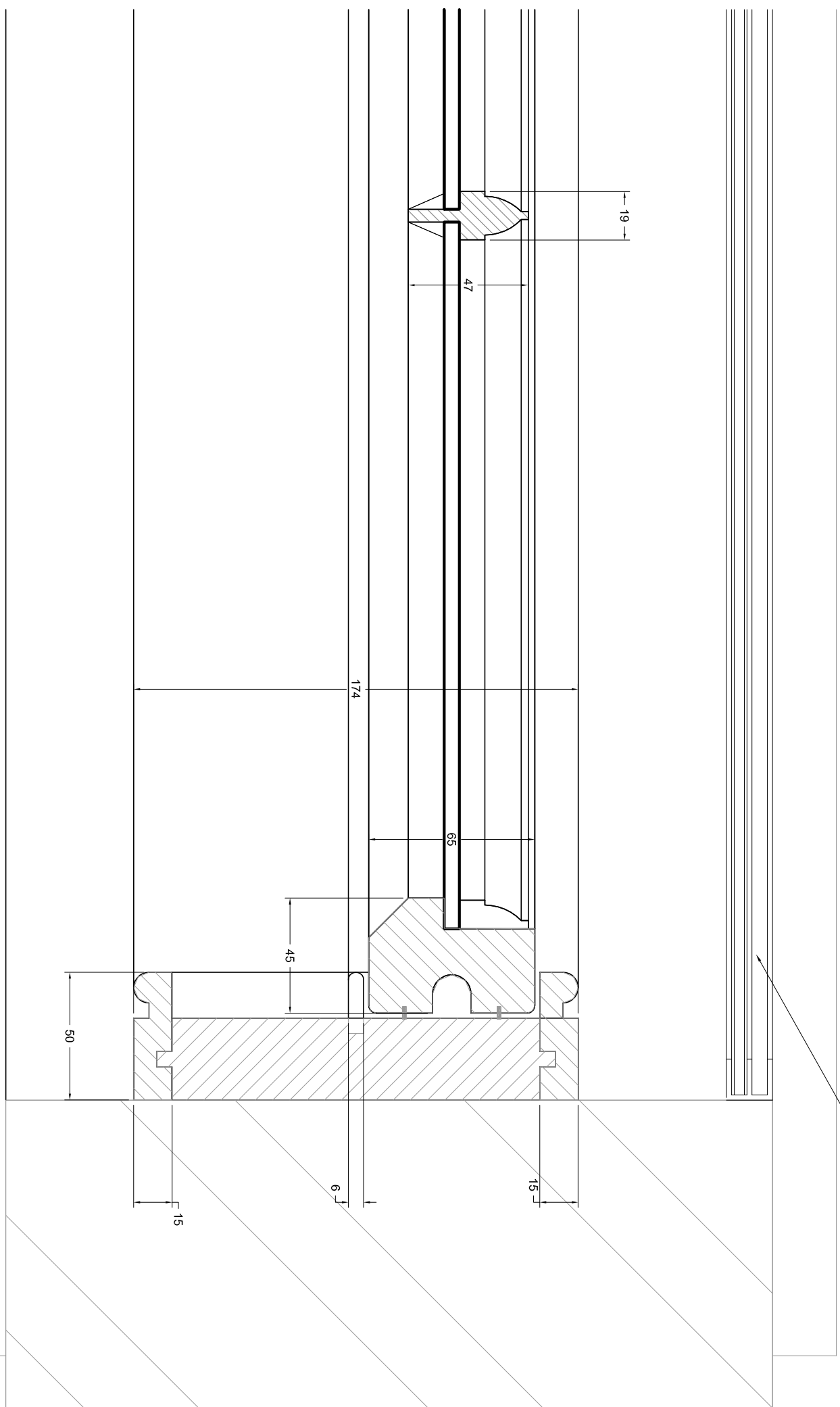
PART PLAN SECTION OF NEW WINDOW 1 : 20



existing rear timber access door and frame to be carefully removed and replaced with new aluminium secondary glazing system. New timber sash window to be supplied and fitted within new opening. All to be made good as necessary.

PART VERTICAL SECTION OF NEW WINDOW 1 : 20

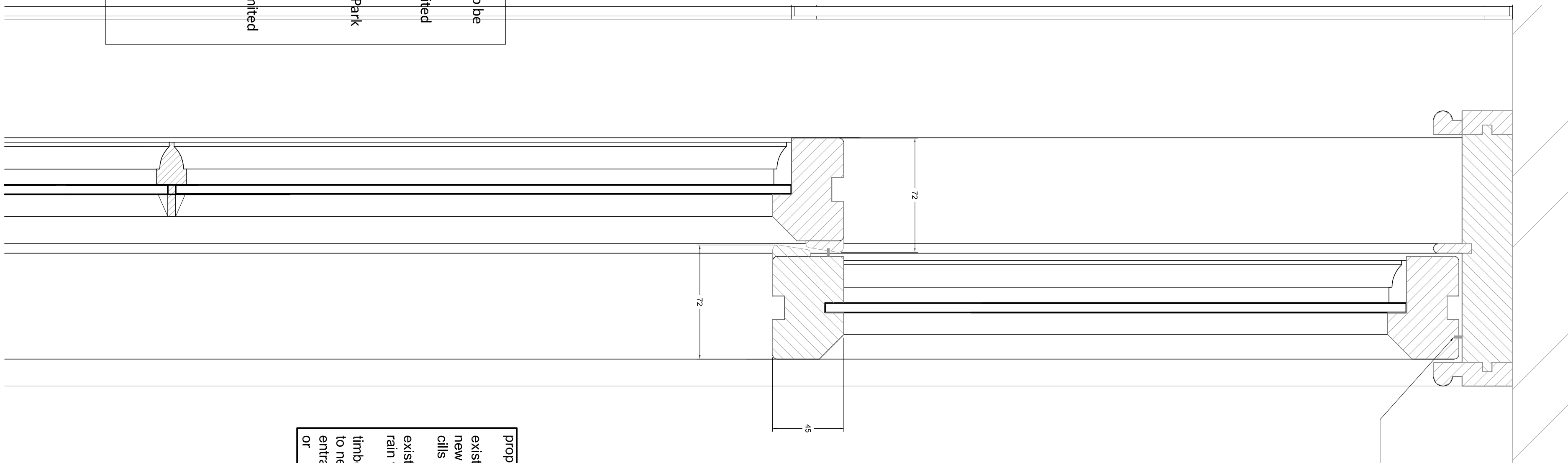
new proprietary white aluminium secondary glazing system supplied and fitted internally to provide maximum void between vertical sliding system and new timber sash window frame



new sash windows to be fabricated by:

M and R Joinery Limited
Unit H
Centro Park
Beckett Close
Knowsley Industrial Park
L33 7DF
tel. 0151 426 8435
or

Preferred Joinery Limited
Units 7&8
Head Street
Liverpool
L8 1UY
tel. 0151 707 9999
or similar approved



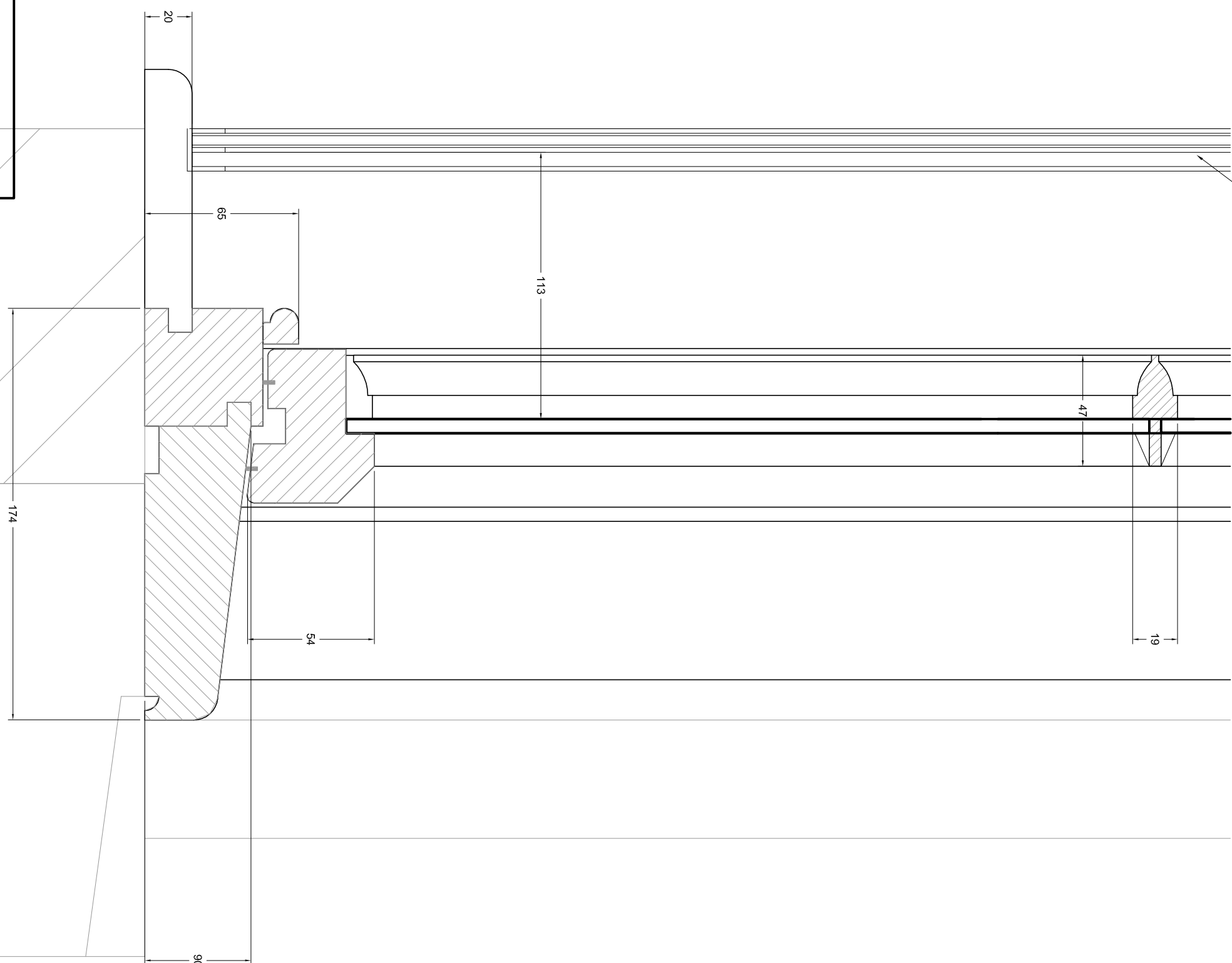
neoprene draft - weather seals

proposed colour finishes :

existing windows : bs 2660 range bs 4-046 off white
new windows : bs 2660 range bs 4-046 off white
cills and lintols : bs 4-046 off white

existing railings : hammerite hammered black
rain water goods : hammerite satin black

timber cladding : sikkens cetol hls plus ebony 020
to new gates : or saddlein extra ebony
entrance doors : bs 2660 range bs 9-098 blue grey
or : bs 2660 range bs 7-086 midnight



PART SECTION DETAIL B 1:5 TYPICAL CILL

PART SECTION DETAIL A 1:5
TYPICAL HEAD AND SLIDING SASH

PART PLAN SECTION DETAIL C 1:1 TYPICAL SLIDING SASH