

BERRY STREET

Break out brickwork inc
over for new lintel.

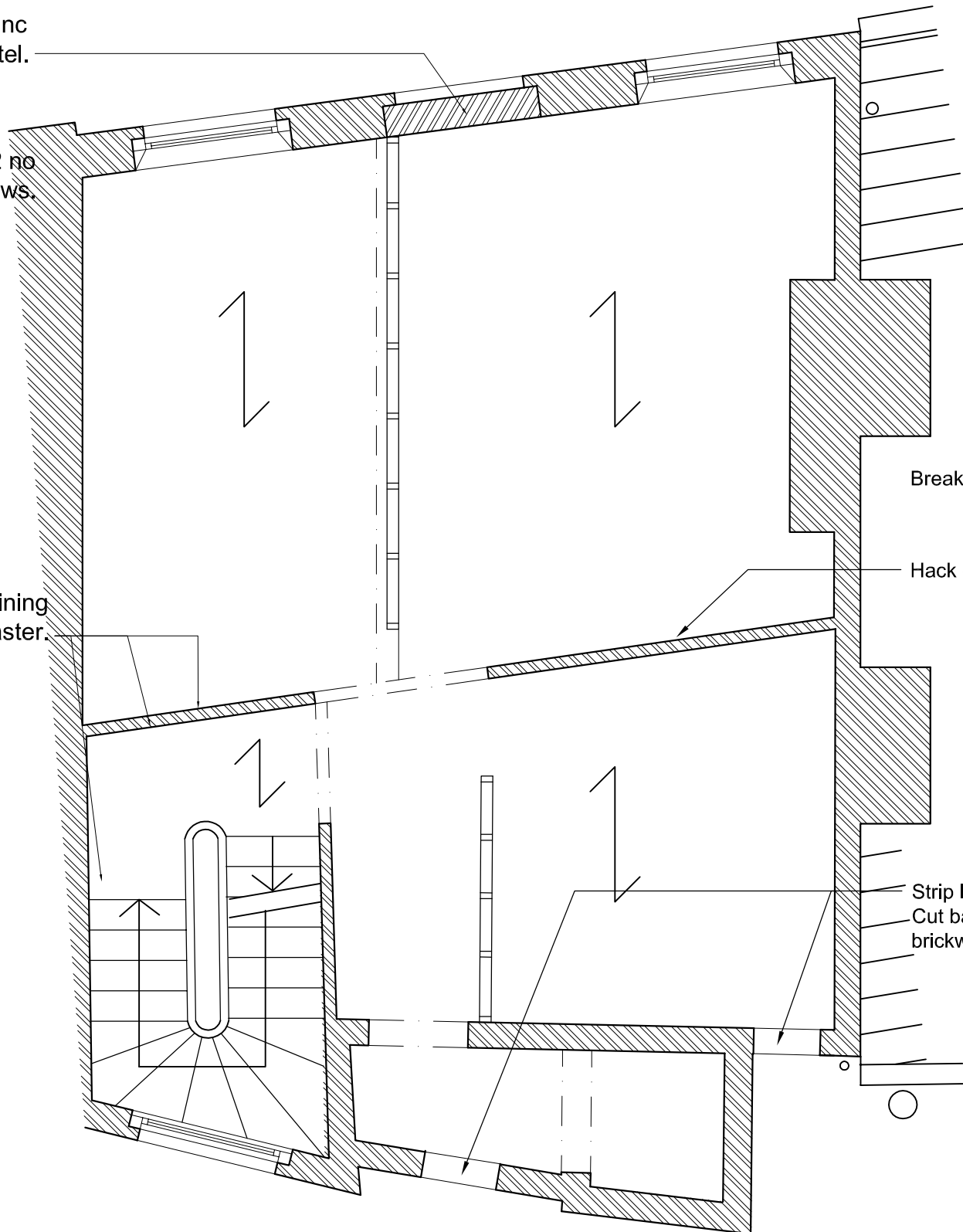
Strip out 2 no
existing windows.

Hack off remaining
wall plaster.

Break out to vent flue.

Hack off remaining wall plaster.

Strip lintels and prop.
Cut back inner face of
brickwork to suit sash windows.



A : 06th August 2015, Issued to Client.



DENOVO DESIGN LTD
89 WOOD STREET, LIVERPOOL, L1 4NU
tel: (0151) 708 4999 fax: (0151) 708 5335
e-mail: post@denovodesign.ltd.uk
www.denovodesign.ltd.uk

44 Berry Street Liverpool for Miss A. Nasuh

SECOND FLOOR PLAN AS EXISTING

Drawn:
DE July 15

Checked:
.

1:50 @A3

DN301.P.05

A