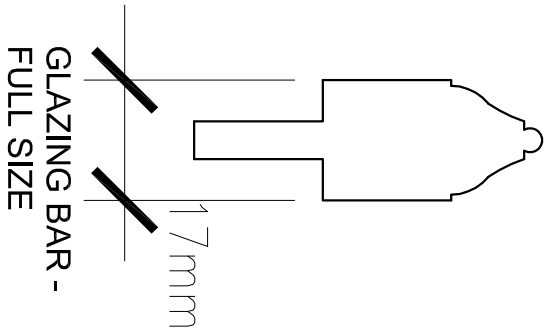
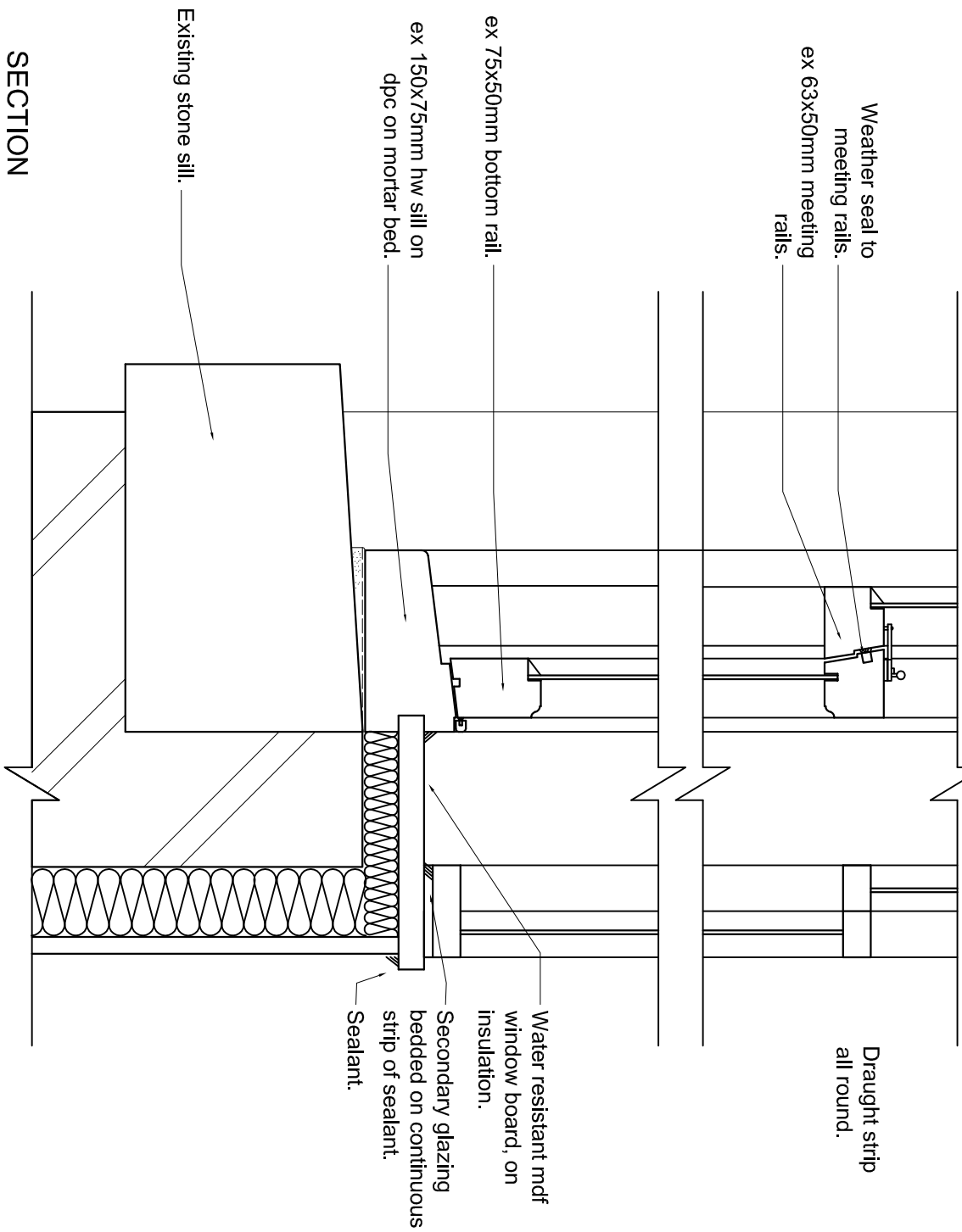


PLAN SECTION



Timber. All joinery timbers to be to BS1186, pressure impregnated to BS5246 as Cuprinol pressure impregnation system using Cuprinol P preservative to manufacturers recommendations. All cuts, borings, notchings, splices shall have exposed faces liberally swabbed with Cuprinol P before assembly.

General construction. Double hung vertical sliding sash windows to sections shown to BS644 pt 2 and BS1186. Combed joints for sashes shall be glued with Araldite and secured with hw dowels. Both inside and outside faces of the laminations shall be vertical. Stiles shall be cut flush with rails WITHOUT horns.

Ironmongery. Spring balances to suit weight of sash. Solid brass wedge action fastener to meeting rails and window lock to meeting rail where windows are accessible. 2 no solid brass ring pulls fitted to bottom rail of lower sash.

Glass. Sashes to be glazed in linseed oil putty using 3 – 4mm thick glass in accordance with CP152, with 4mm toughened glass where required by Building Control.

Decoration. Prime, undercoat and two coats flat oil paint, off white.

Sash windows to be manufactured by specialist joinery subcontractor experienced in such work – suggested companies: Congress Windows Ltd (0151) 260 4800; Preferred Joinery (0151) 707 9999; Cadgrange Ltd (0151)949 0216.



ARCHITECTURE INTERIOR DESIGN CONSERVATION

DENOVO DESIGN LTD
89 WOOD STREET, LIVERPOOL, L1 4NU
Tel: (0151) 708 4999 Fax: (0151) 708 5335
e-mail: post@denovodesignltd.uk
www.denovodesignltd.uk

44 Berry Street Liverpool for Miss A. Nasuh

PROPOSED WINDOW DETAILS

Drawn: DE July 15

Checked:

1:5 @A3

DN301.C.24

A

SECTION