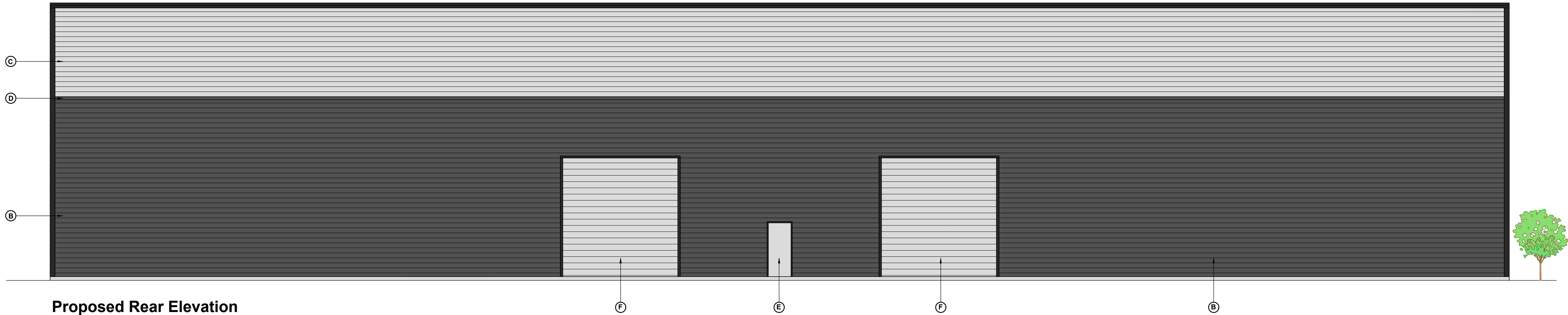


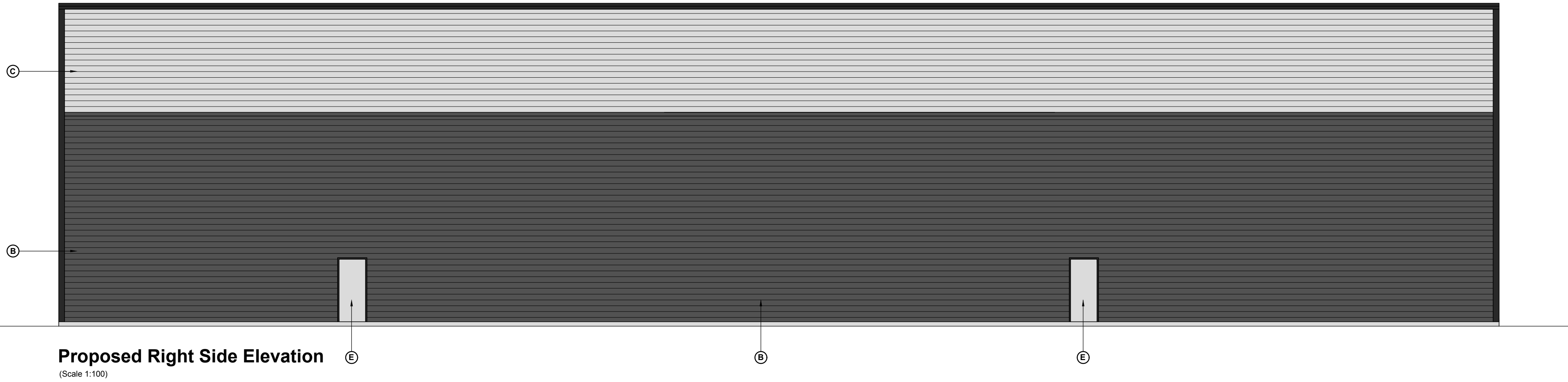
Proposed Front Elevation  
(Scale 1:100)



Proposed Rear Elevation  
(Scale 1:100)





Proposed Left Side Elevation  
(Scale 1:100)



Proposed Right Side Elevation  
(Scale 1:100)

- NOTES**
1. This drawing to be read in conjunction with all relevant architect's, engineer's and mechanical and electrical engineer's drawings, specifications etc.
  2. All dimensions to be checked on site.
  3. Any discrepancies, contradictions to be notified to project architect / engineer.
- Materials Key**
- (A) Kingspan Micro-Rib KS900 MR horizontally laid. 80mm Thick to achieve a U value 0.26 W/m²K - Colour / Finish, Spectrum, Anthracite, RAL 7016
  - (B) Alphaclad 32 1000 horizontally laid. 180mm Core thickness to achieve a U value 0.25 W/m²K - Colour / Finish , Leathergrain, Anthracite, RAL 7016
  - (C) Alphaclad 32 1000 horizontally laid. 180mm Core thickness to achieve a U value 0.25 W/m²K - Colour / Finish , Leathergrain, Metallic Silver, RAL 9006
  - (D) Flashing Band - Colour / Finish, Leathergrain, Anthracite, RAL 7016
  - (E) Steel fire escape doors, polyester powder coated to achieve a U value 2.0 W/m²K - colour silver
  - (F) Sectional overhead door, polyester powder coated to achieve a U value 0.6 W/m²K- colour silver
  - (G) Windows - Aluminium mullions and transoms, factory sealed double glazed units, polyester powder coated to achieve a U value 1.8 W/m²K- Frames to be Anthracite RAL 7016 (matt)
  - (H) 8mm Thk Trespa Meteor Facade panels - Colour Brilliant Green A33.3.6 (UNI Colour)
  - (J) Curtain walling - Aluminium mullions and transoms, factory sealed double glazed units and insulated spandrel panels, polyester powder coated to achieve a U value 1.8 W/m²K - Frames to be Anthracite RAL 7016 (matt)
- Roof** - Alphaclad 32 1000 horizontally laid. 240mm Core thickness to achieve a U value 0.18 W/m²K - Colour / Finish , Leathergrain, Goosewing rey, RAL 7038 - (10%) rooflights
- Flashings** - Colour Anthracite RAL 7016 , Leathergrain finish

C2	08.04.16	Sectional Door Updated to Front Elevation	Construction	MM
C1	02.03.16	Specification Updated	Construction	MM
T2	07.09.15	Sectional Doors Updated	Tender	MM
T1	22.05.15	Tender Issue	Tender	MM
P2	26.02.15	Scheme Updated	Planning	MM
P1	16.12.14	First Issue	Planning	MM
Rev.	Date	Description	Status	Rev. by

Project Bank Hall Lane Liverpool		 Trinity Chambers, 18 Ivy Street, Birkenhead Merseyside, CH41 5EF, tel: 0151-650-1200	
Title Unit 1 Proposed Elevations		Client 	
Drawn by M. Matthews	Checked by M.D. Jones	Status Planning	
Scale 1:100 @ A1	Date Dec '2014	Drawing Number DMS528-1-301	Rev. C2
This drawing is the property of Muir Associates (UK) LIMITED and must not be reproduced without permission.			