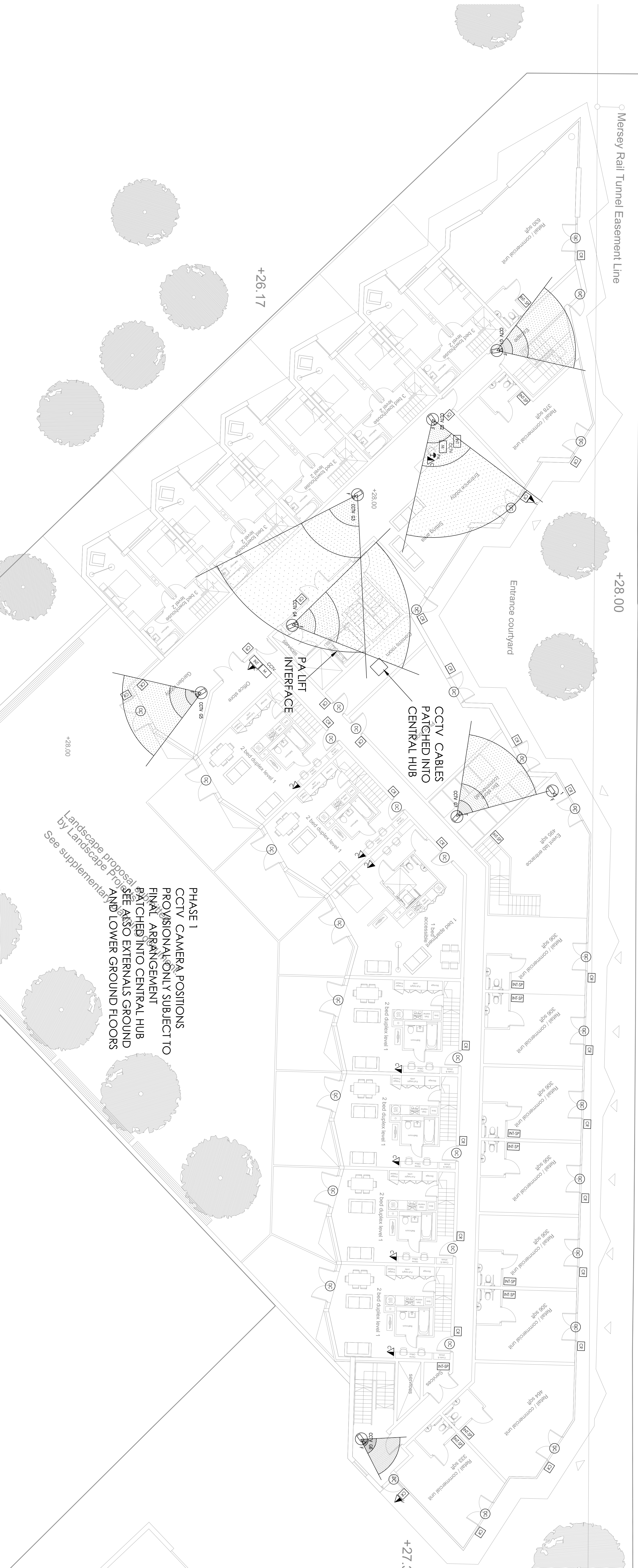


1. THIS DRAWING SHALL BE READ IN CONJUNCTION WITH ANY RELEVANT STRUCTURAL, ARCHITECTURAL, AND CONSULTANT DRAWINGS.
2. THIS DRAWING SHALL BE USED IN CONJUNCTION WITH THE SPECIFICATIONS.
3. DO NOT SCALE FROM THIS DRAWING.
4. WHERE EXTERNAL CCTV CAMERAS ARE MOUNTED ON EXTERNAL LIGHTING COLUMNS THE CONTRACTOR SHALL ENSURE THAT THE EXTERNAL LIGHTING COLUMNS ARE SUITABLE FOR CCTV MOUNTING (USE THE 'REVISION C' DRAWING).
5. ALL WALL MOUNTED / BUILDING MOUNTED CCTV CAMERAS SHALL BE SET OUT IN ACCORDANCE WITH THE ARCHITECT'S DETAIL DRAWING.
6. THIS DRAWING SHOULD BE PRINTED AND READ IN COLOUR.
7. CCTV CAMERAS INCLUDED IN LINE WITH EXTERNAL LAYOUT:
 - EXTERNAL LAYOUT ENVELOPES
 - VEHICLE AND PEDESTRIAN GATES
8. EXTERNAL DETECTION/CCTV IS TO BE DEVELOPED SHOULD ENCLOSE MONITORING BE REQUIRED.

ARCHITECTS DRAWING USED AS XREF

DRG REF

HSA-L-201

[illegible]

See also EXTERNALS, GROUND AND LOWER GROUND FLOORS

PHASE 1
CCTV CAMERA POSITIONS
PROVISIONAL ONLY SUBJECT TO
FINAL ARRANGEMENT
PATCHED INTO CENTRAL HUB
SEE ALSO EXTERNALS GROUND
AND LOWER GROUND FLOORS



FIELD OF VIEW BASE ON 1000P RESOLUTION WIDE ANGLE LENS (TYPICAL)

50m IDENTIFICATION 100%
 100m IDENTIFICATION 50%
 200m IDENTIFICATION 25%
 400m DETECTION 10%

100m

CCTV COVERAGE FIELD OF VIEW

[illegible]