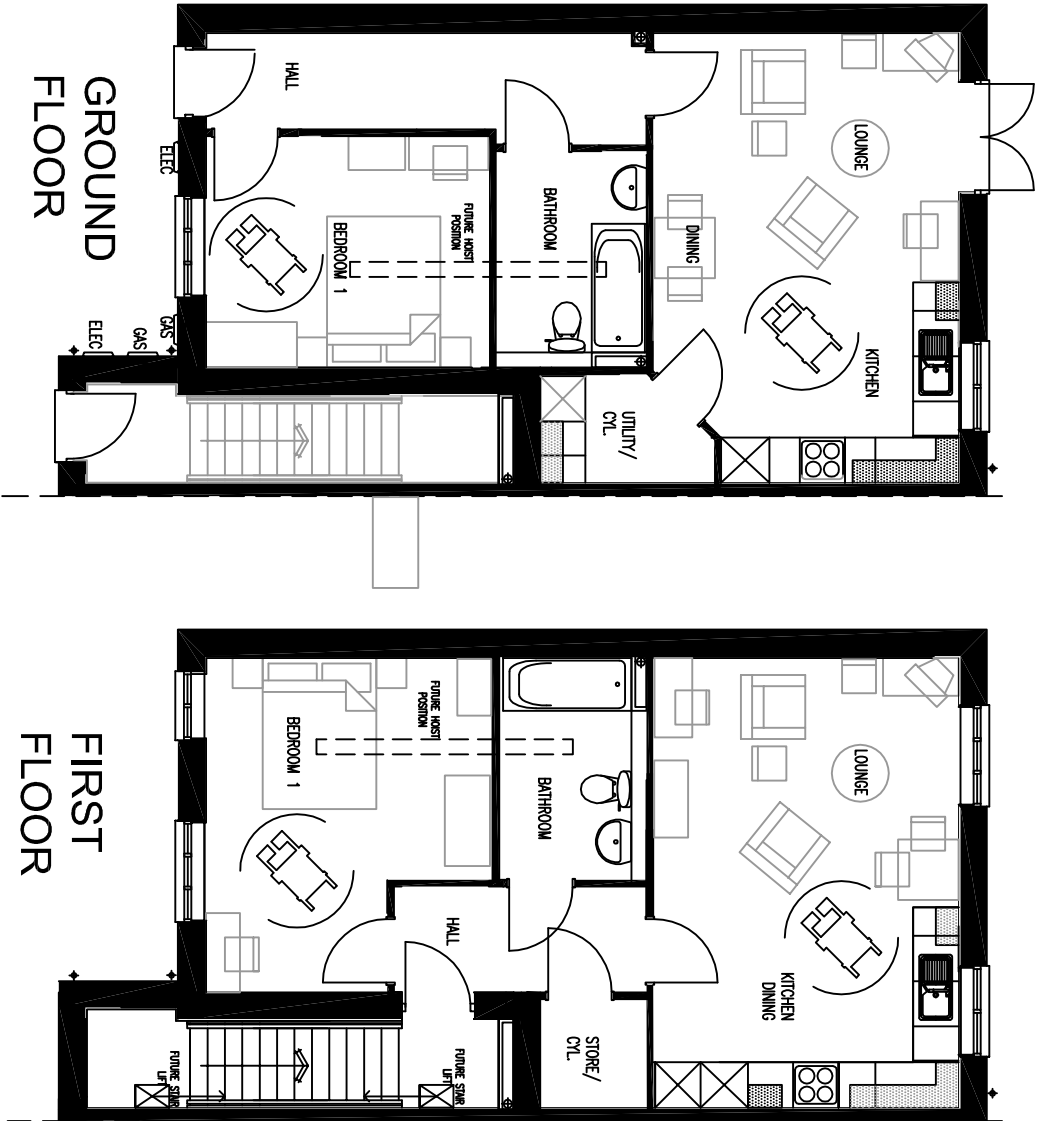


FRONT ELEVATION

REAR ELEVATION

SIDE ELEVATION



GROUND FLOOR

FIRST FLOOR

1 BED 2 PERSON APARTMENTS - PLOTS 4-11  
Floor Area - 53.11 m<sup>2</sup> (GIA)

B	22.10.13	AD	Floor plans adopted for lifetime homes. Square footage increased to 53.11.	ARCH	ENG
A	1.8.13	AD	French door introduced to ground floor to match current planning layout.	CHECK	CHECK
REV/DATE		DRAWN/ DESCRIPTION		ARCH CHECK	

TITLE  
1 BED 2 PERSON APARTMENTS  
LIFETIME HOMES COMPLIANT  
Planning Drawings



**M.C.I. Developments Ltd.**  
1 Beecham Court,  
Smithy Brook Road,  
Wigan, WN3 6PR.  
tel: 08448871467  
fax: 08448871468  
web: www.mcidevelopments.com  
email: admin@mcidevelopments.com

PROJECT Brunswick Street,  
Liverpool.

DRN BY	AD	SCALE	JOB REF	DRAWING NUMBER	REV
DATE	July 13	1:100	-	BrunswickSV1B2P	B