

Landscape Design Statement

Brunswick Quay, Liverpool

Client: Maro Developments Ltd.

Document Ref: M80089_Landscape Design Statement_Rev04

Date: April 2018

open

optimised environments

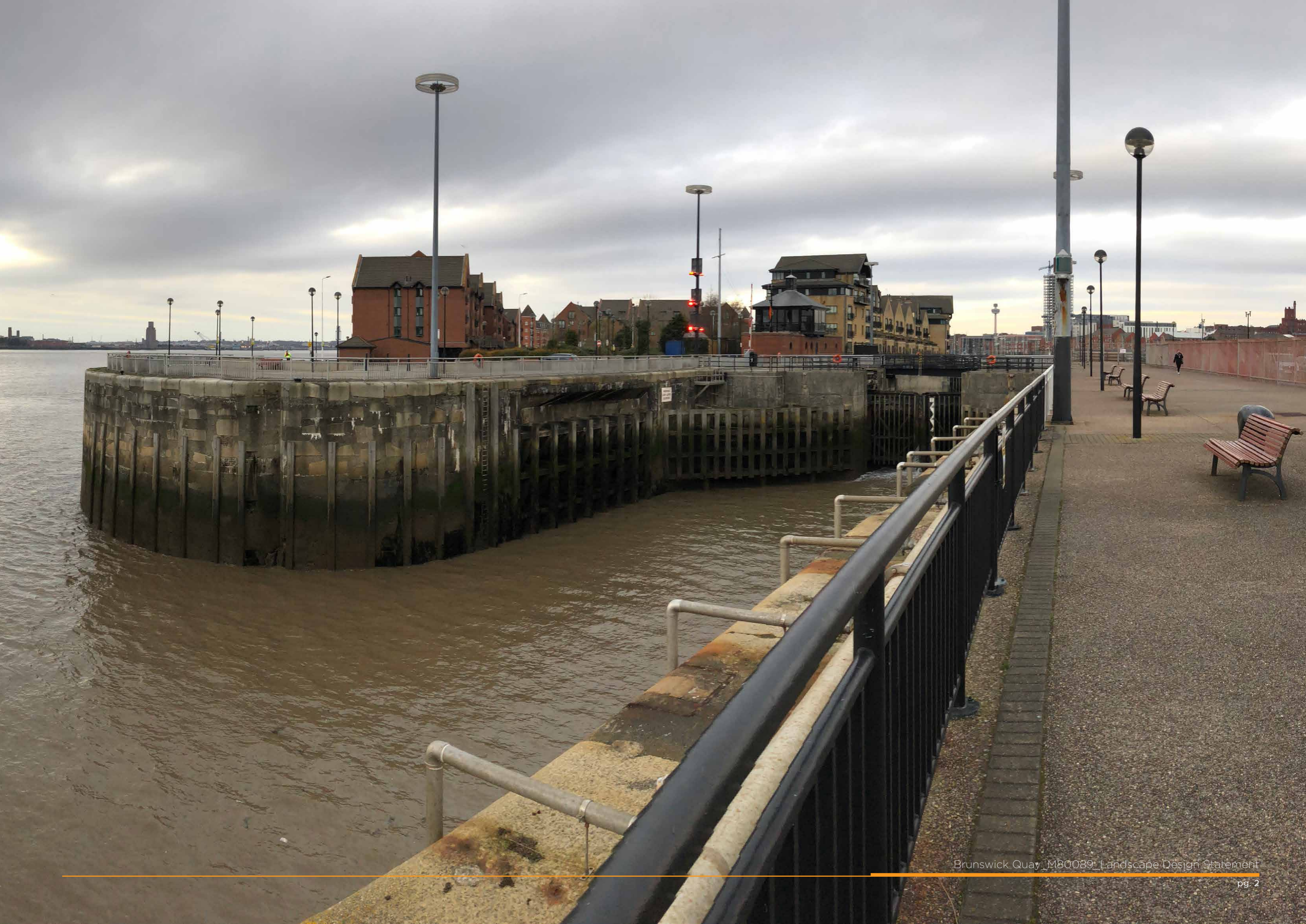
> contents

1.	Introduction	pg. 1
2.	Existing Site	pg. 3
2.1	Site Context	pg. 3
2.2	Site Description	pg. 5
3.	Design Evolution	pg. 7
3.1	Concept	pg. 7
3.2	Design Themes	pg. 8
3.3	Materiality	pg. 9
3.4	Sketch Design	pg. 11
4.	Landscape Masterplan	pg. 13
4.1	Landscape Masterplan	pg. 13
4.2	Public Realm Character & Precedents	pg. 15
4.3	Piazza Character & Precedents	pg. 16
4.4	Access & Circulation	pg. 17
4.5	Boundaries	pg.18
4.6	Feature Lighting Concept	pg.19
5.	Site Sections	pg. 21
5.1	Site Sections	pg.21
6.	Indictive Materials Palette	pg. 23
6.1	Hard Landscape	pg. 23
6.2	Boundaries & Street Furniture	pg. 25
7.	Indicative Planting Palette	pg. 29
7.1	Trees	pg.29
7.2	Shrubs	pg.31

1. Introduction

OPEN have been appointed by **Maro Developments Ltd.** to develop the landscape and public realm design proposals for the proposed residential-led, mixed-use development at Brunswick Quay, Liverpool, in support of a detailed planning application.

This document aims to illustrate the proposed strategy for the design of the external spaces and their relationship to the existing and emerging site context and the proposed built form.



2. Existing Site

2.1 Site Context

The Brunswick Quay site lies to the south of Liverpool City Centre, between the southern edge of Brunswick Dock and the River Mersey. An existing and well-used cycle and pedestrian route runs along the riverside, linking Brunswick Quay to established residential, commercial and cultural areas including Coburg Dock, Queens Docks, Kings Parade and the Echo Arena, Albert Docks and Liverpool Waterfront. Away from the waterfront, the site has existing pedestrian, vehicle and rail links to the city centre, and surrounding neighbourhoods.

The site is located at the southern edge of Liverpool City Council and The Canals and Rivers Trust's Waterspace Strategy for the Southern Docks. The proposed public realm design should capitalise on the proximity to the River Mersey and the long range views across to The Wirral, but also promote access and activity along the adjacent docks.

Although the land immediately adjacent to the site is occupied by the low rise commercial buildings, recently consented/under construction residential developments at Brunswick Way and Herculaneum Quay, mean that the design of the site must respond to a changing context.

Scale NTS
N

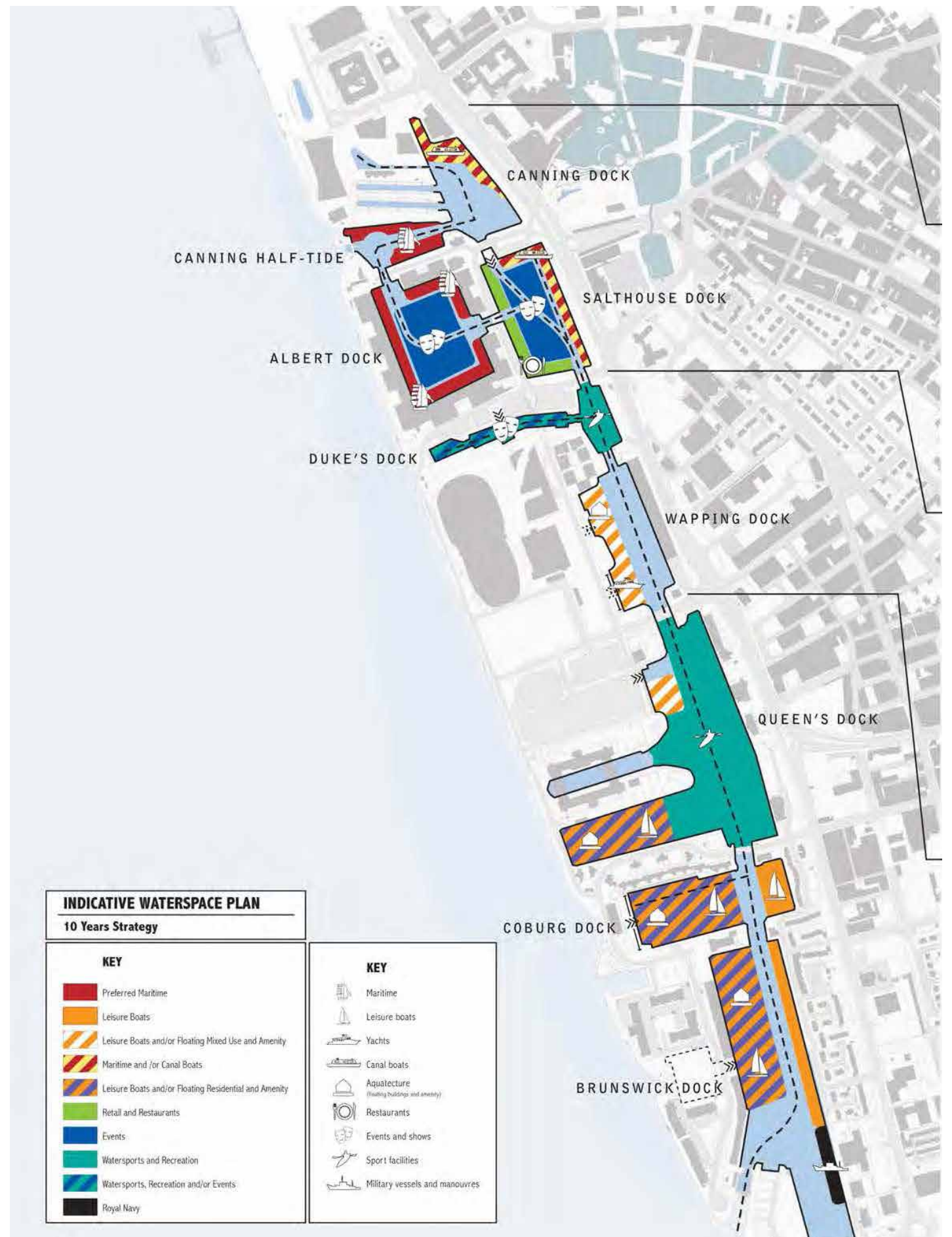


fig. 1: Extracted from 'A Waterspace Strategy for the Sustainable Development on the Liverpool South Docks' (BACA Architects / Canals & Rivers Trust / Liverpool City Council)

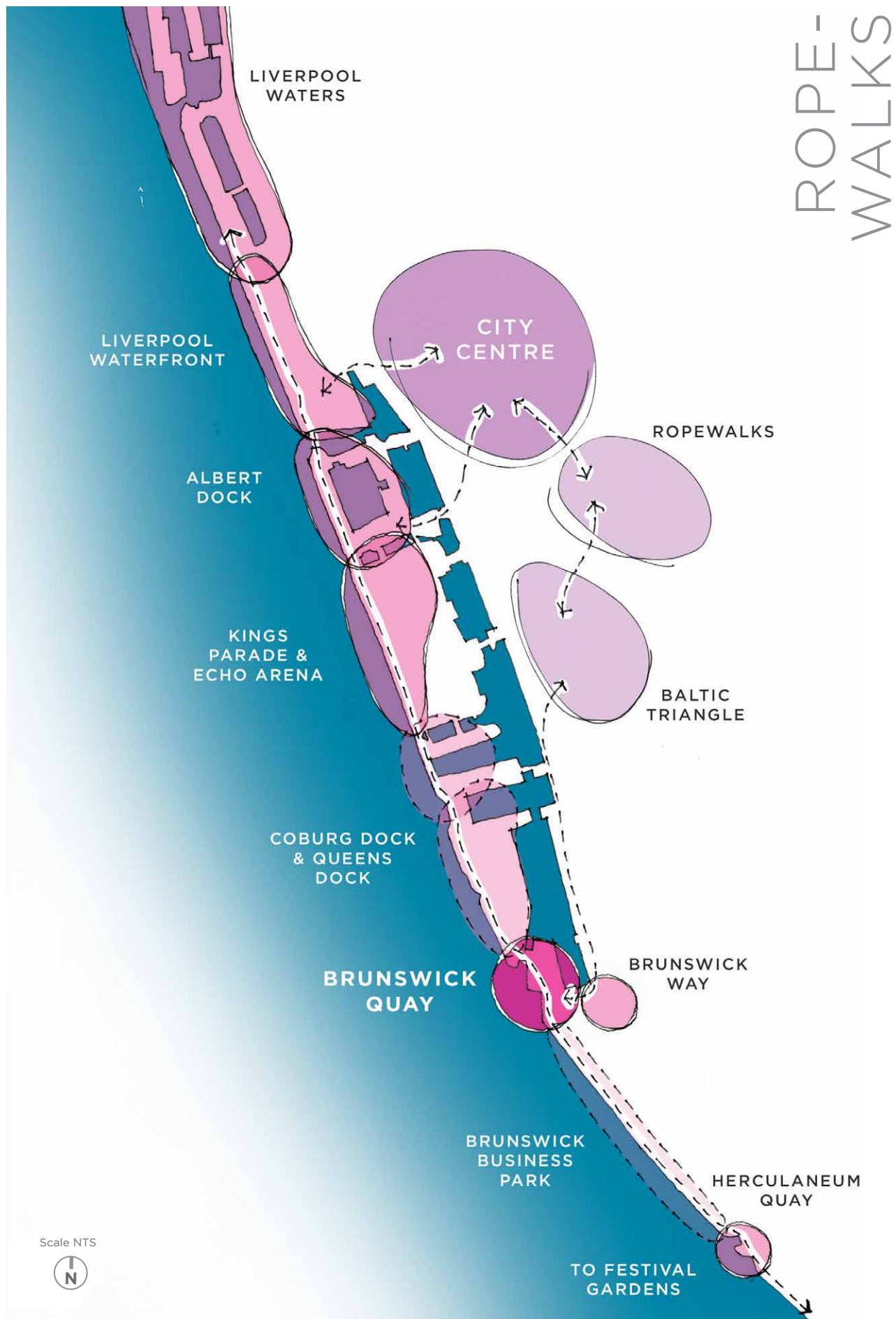


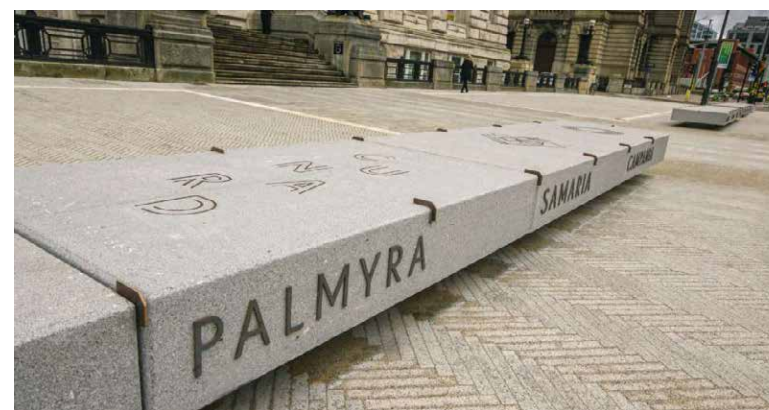
fig. 2: Sketch Context Diagram

ROPE- WALKS



BALTIC TRIANGLE

LIVERPOOL WATERFRONT



2.2 Site Description

The former dock site is comprised of an area of brownfield land enclosed by water on three sides.

Barriers

The primary barriers to movement are the adjacent River Mersey, Brunswick Dock and the lock which connects the two. An existing pedestrian barrier runs alongside the waters edge around the site.

Tall vertical bar railings run around the ownership boundary, dividing the majority of the site from the riverside pedestrian/cycle route. Palisade fencing encloses the Atlantic Way boundary.

Built Form, Scale & Landuse

Although, previously occupied by a large footprint, single-storey, industrial building, the remaining building on the site is a small, single-storey sub-station in the south east corner, facing Atlantic Way.

To the south of the site, on Atlantic Way, is the Brunswick Business Park, consisting of a three-storey commercial office building and two linear groups of two-storey commercial buildings facing a central surface car park.

To the north of the site, Clippers Quay is an existing four-five storey residential development, facing both the riverside and Brunswick Dock.

On the eastern side of Brunswick Dock, opposite the site, are a number of low-rise, one and two-storey commercial and retail buildings set within surface car parking.

Topography

The site is relatively level with few significant changes in topography. There is approximately half a metre fall from west to east across the site.

There are significant level differences between the site and the water level within Brunswick Dock, as well as between the riverside public realm and the tidal River Mersey.

Vegetation

The site is dominated by hard standing. Some self-seeded shrubs exist within the site, particularly within the south west corner. Areas of ornamental shrub planting exist immediately outside of the south west boundary of the site. There are two existing Maple trees within the public realm beyond the south east boundary.

Views

Due to the flat topography and the lack of development immediately adjacent, the site can be viewed from Atlantic Way and from across Brunswick Dock.

The primary long range views out of the site are from the adjacent public realm, up and down the River Mersey and across to the Wirral. To the north of the site, views exist northwards along Brunswick Dock towards Coburg Dock.



fig. 3: View north across site from riverside public realm



fig. 6: View north along eastern site boundary and Brunswick Dock from Atlantic Way



fig. 8: View across Brunswick Dock to eastern boundary from Atlantic Way



fig. 4: View north of lock between River Mersey and Brunswick Dock



fig. 9: View south along western boundary



fig. 5: View north east from public realm across River Mersey towards Birkenhead

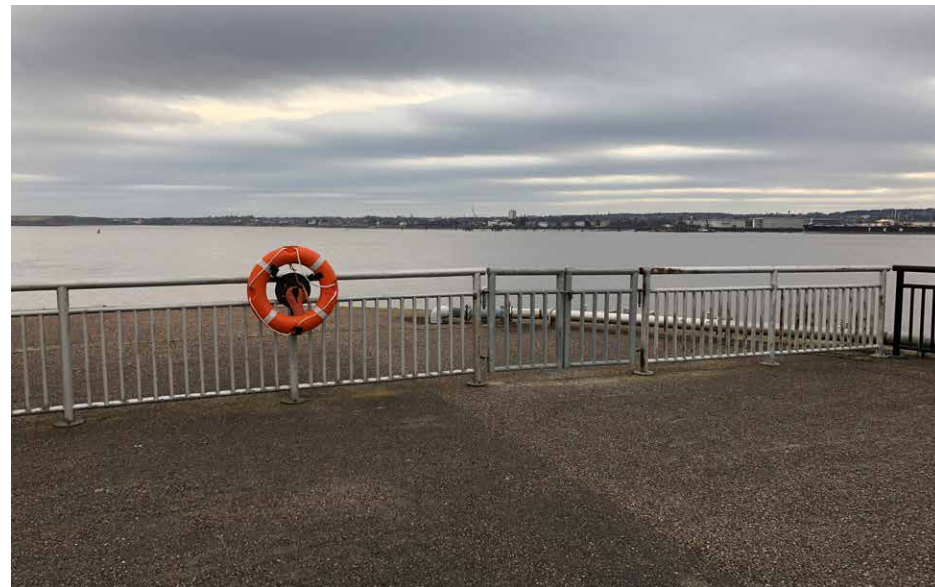


fig. 7: View south across River Mersey



fig. 10: View east along southern boundary and Atlantic Way

3. Design Evolution

3.1 Concept

The design of the public realm should respond to the sites riverside setting and allow for the significant footfall which exists via the existing pedestrian/ cycle route. The public realm should provide punctuation along this long linear route, with opportunities to pause, rest and enjoy the views across the River Mersey.

The arrangement of the proposed buildings creates sheltered, south and west facing niches, which provide opportunities for seating / socialising and cafe spill out, away from the main routes of movement.

Public access along the dockside should be created with opportunities to enjoy the east facing waterside aspect and long views northwards along the network of docks.

Raised semi-private communal spaces should be created for the amenity of residents, which capitalise of the dual waterside aspects of the development, with elevated views out across the riverside and docks.

LEGEND

1. Arrival space

2. Cafe seating

3. Public seating

4. Waterside viewing

5. Shared surface

6. Communal space

Primary cycle/pedestrian route

Secondary pedestrian movement

Residents circulation

Scale NTS

N

fig. 11: Concept Diagram

A concept diagram for the Brunswick Quay development. The diagram shows a cluster of building footprints in dark grey, situated along a riverbank (River Mersey) on the right. Various public realm spaces are indicated by colored shapes: orange for arrival spaces (1), cafe seating (2), and public seating (3); yellow for waterside viewing areas (4); a light blue strip for a shared surface (5) along the dockside; and green shapes for communal spaces (6). Movement routes are shown with arrows: a solid grey line for the primary cycle/pedestrian route, dashed grey lines for secondary pedestrian movement, and dotted grey lines for residents' circulation. The diagram also shows a network of docks and the river to the right.

Brunswick Quay_M80089_Landscape Design Statement

pg. 7

HISTORIC DOCKS

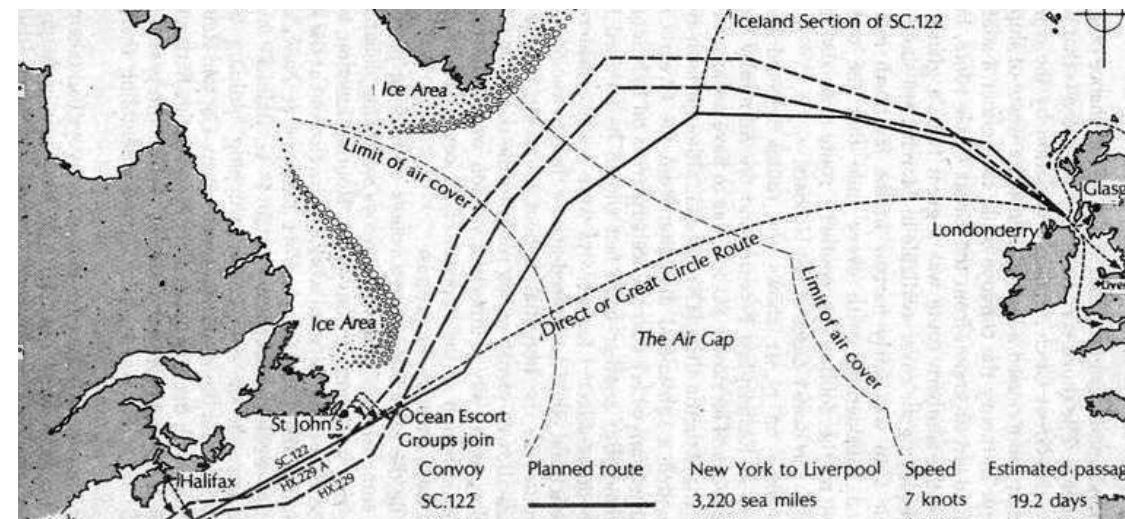
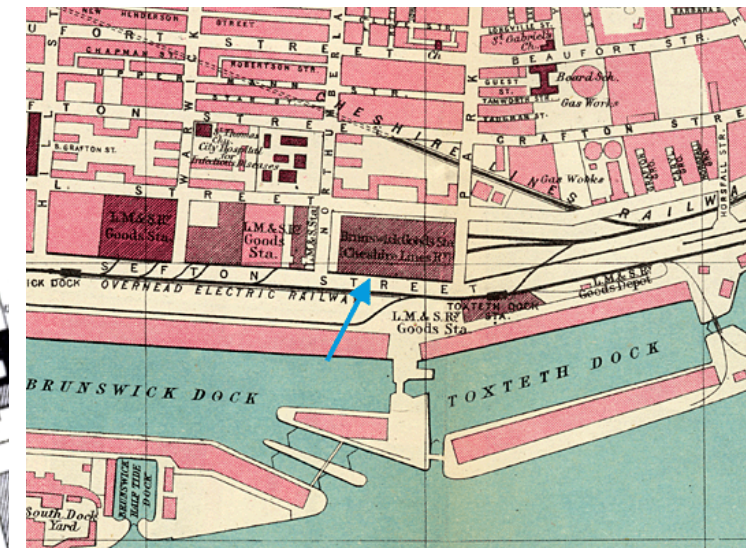
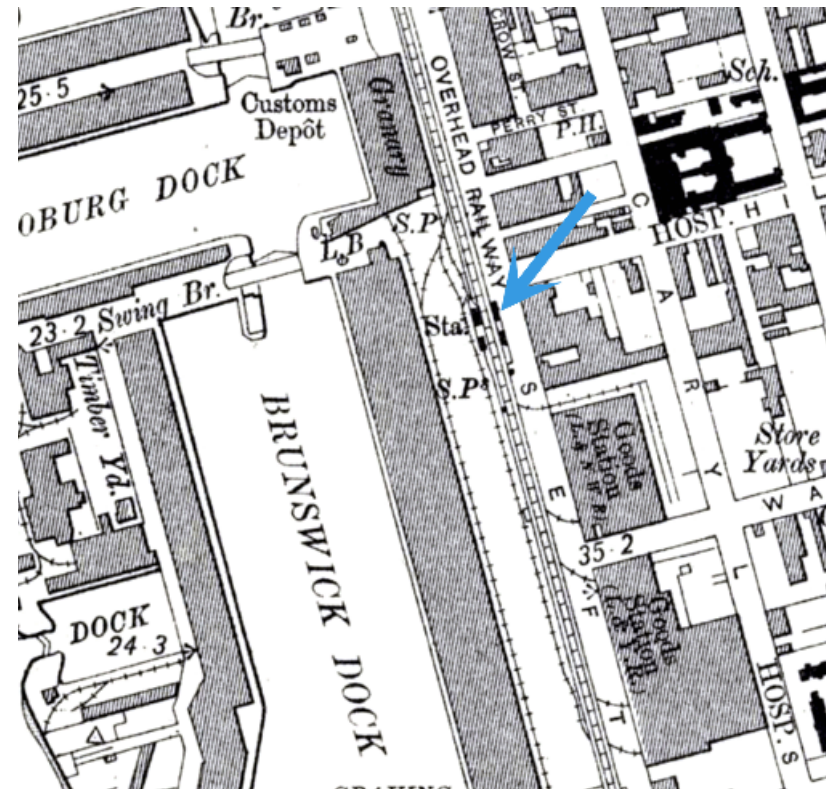
3.2 Design Themes

The rich maritime and industrial history of Liverpool's southern docks have helped shape the site. This history should inspire and influence the form and materiality of the sites new public realm design.

History of the Docks & the New Brunswick Connection

The docks were originally built between 1827 and 1832 to import timber from the new world, including specifically New Brunswick in Canada. The docks were subsequently used for ship building, by Cato, Miller and company from 1854.

The docks were altered a number of times over the 19th and 20th centuries and were finally closed in 1975. The single lock accessible to small watercraft today, was reopened in 1987.



NEW BRUNSWICK CONNECTION

46.5653° N, 66.4619° W



3.3 Materiality

The industrial heritage of the site provides an opportunity to influence the forms and materiality of structures, street furniture, lighting and paving within the public realm.

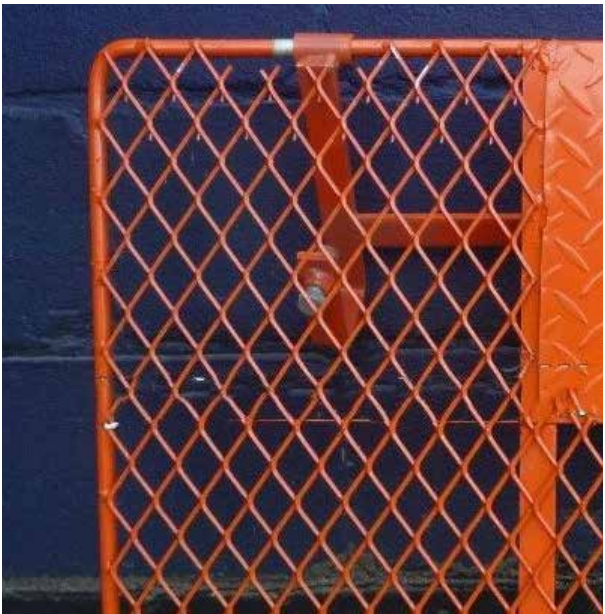
The images overleaf illustrate how a simple palette of raw industrial materials, such as concrete, timber and painted metalwork, as well as bold industrial/maritime graphics, can be translated into contemporary paving and street furniture elements.

This approach provides a visual and tactile connection back to the sites former use, importing timber and building ships, within the context of a modern public realm setting.

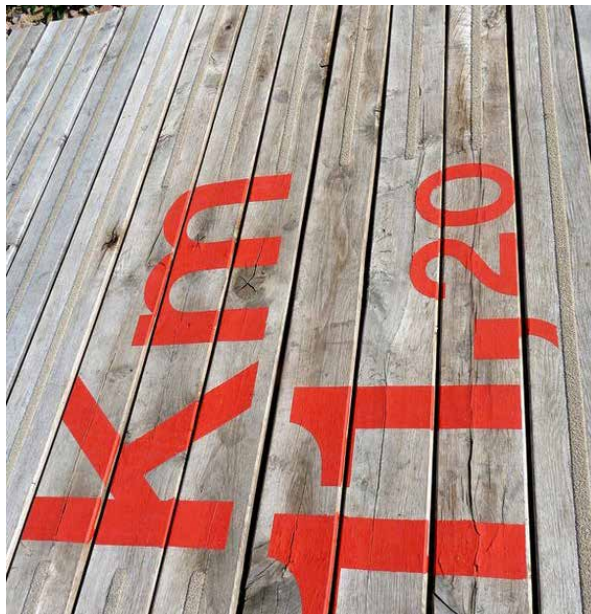
CONCRETE



TIMBER



METAL



3.4 Sketch Design

Working collaboratively with the Architects, client and wider design team, the design of the landscape and public realm was developed iteratively alongside the building design to ensure a synergy between the internal and external spaces.

Throughout the design process the team met with Liverpool City Council and liaised with The Canals & Rivers Trust to share our ideas on the evolving design of the external spaces.



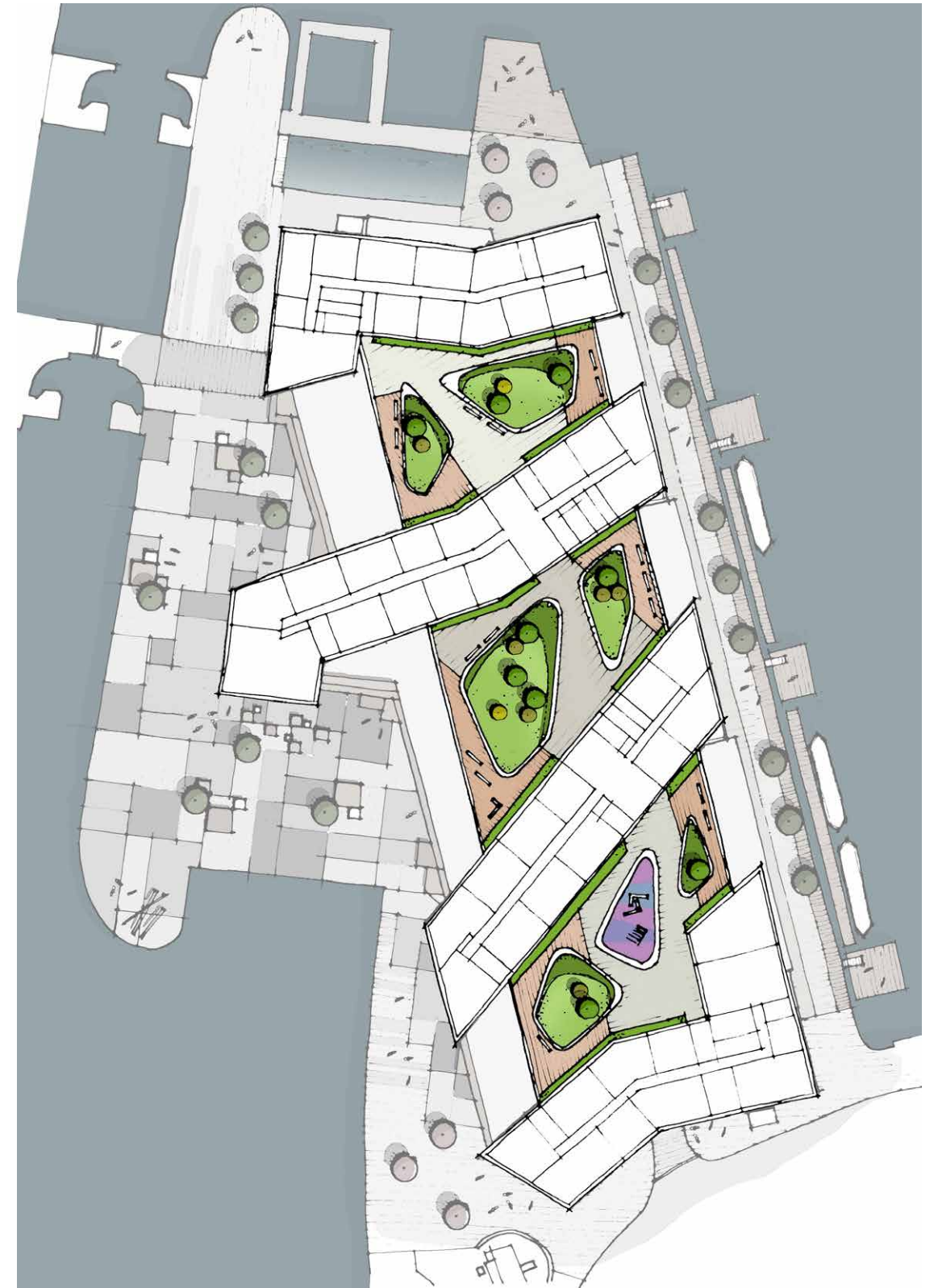
fig. 12: Initial Sketch Landscape Masterplan (Mar 2018)



Scale NTS



fig. 13: Public Realm Design Development (Mar 2018)



Scale NTS



fig. 14: Amenity Space Design Development (Mar 2018)

4. Landscape Masterplan

4.1 Landscape Masterplan

The adjacent masterplan illustrates our approach to the landscape and public realm around the development. The design is intended to function as an attractive, safe and legible space with the flexibility to form part of a wider network of public space and pedestrian/cycle routes, particularly alongside the River Mersey and the emerging context of the consented development along Brunswick Way/Summers Road.

Riverside Public Realm

A grid of extra-large paving slabs and oversized street furniture elements are arranged to define a generous, wide pedestrian/cycle route along the riverside, and more enclosed seating and relaxation spaces, sheltered within the niches of the building form, but still with views out across the Mersey.

The approach to materiality and street furniture is intended to create the feeling of a post-industrial landscape, whilst functioning as an inviting, usable public space, designed for the present day.

Dockside Boulevard

Along Brunswick Dock, a simpler, more refined, approach to the public realm is proposed. A paved shared surface, with street trees and a dockside boardwalk is intended to create a marina style environment terminating at a seating terrace with views northwards along the network of Liverpool’s Southern Docks.

The landscape masterplan illustrates the potential for future dockside boat moorings and a possible water taxi drop-off in the future.

Elevated Piazzas

The elevated piazzas, at first floor level, are designed to provide a range of amenity spaces for residents, capitalising on the orientation of the buildings and the long range waterside views.

The design includes larger social areas, raised lawns and outdoor dining

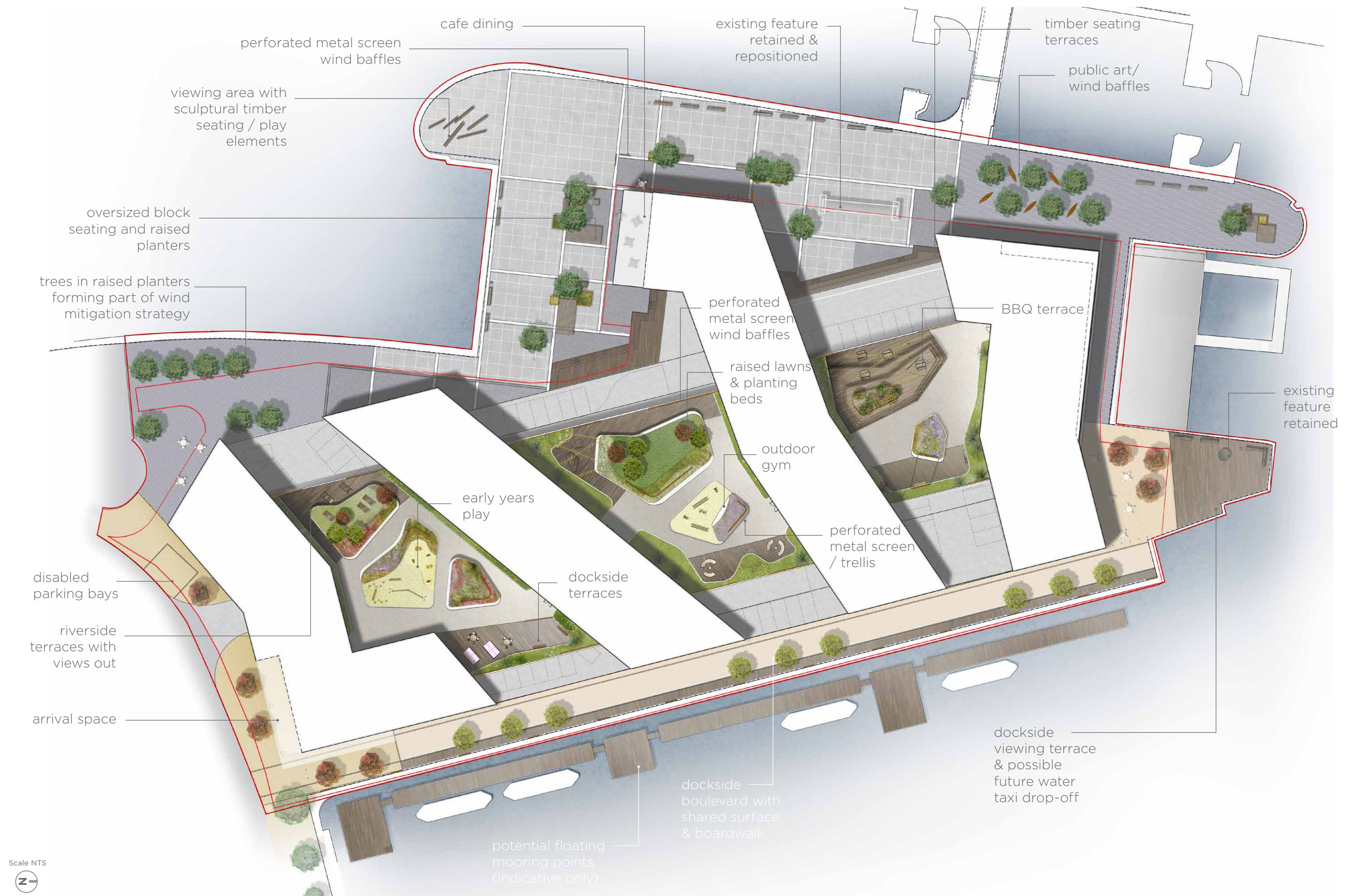
spaces along the western edge, benefiting from the afternoon and evening sun, with views out across the Mersey.

Smaller, more intimate seating areas are proposed along the eastern edge, enclosed by low raised planting beds, which filter views out to Brunswick Dock.

Other activity spaces are located centrally, away from piazza level apartments. These include an informal, early-years play space to provide for young families, keen to remain living within close proximity to the city centre and promote a more diverse age range within the development. In addition a recreation terrace is proposed with direct links to the internal communal space, with outdoor table tennis or table football, and an external gym facility is proposed within the central piazza deck.

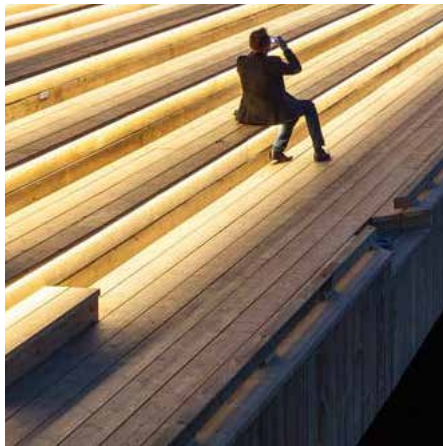
On the eight floor a smaller residents terrace provides an intimate social space with views out across and up the River Mersey.

*Note:
All proposals beyond the ownership boundary are subject to agreement with the adjacent landowners.*



4.2 Public Realm Character & Precedents

CONTEMPORARY
STREET FURNITURE
WITH BOLD COLOURS
& LIGHTING
(AKER BRYGGE, OSLO, NK)



INDUSTRIAL CONCRETE
PAVING GRID
(MAASKADE CUIJK, NL)



TIMBER / METAL
SEATING UNITS
(LONDON QUAY, NZ)



OVERSIZED STREET
FURNITURE UNITS
(AKERSHUSKAIA, OSLO,
NO)

4.3 Piazza Character & Precedents



SEATING TERRACES
(HANDYSIDE GARDENS, KINGS CROSS, LDN) ▲
PATHS BETWEEN RAISED PLANTING BEDS ▼
(23° ESCAPE, TH)



OUTDOOR GYM / FITNESS ▼



EARLY YEARS PLAY ▲
CURVED PLANTING BEDS ▶

RAISED LAWNS
(NORTH POINT GATEWAY, MA, USA)



COMMUNAL TERRACE ▶



4.4 Access & Circulation

The adjacent diagram illustrates the proposed access and circulation strategy for the external spaces, including connectivity through the building.

The primary pedestrian/cycle movement is along the riverside connecting to the existing route to the north and south of the site. The route is significantly wider than the existing route and has an enhanced connection to Brunswick Way.

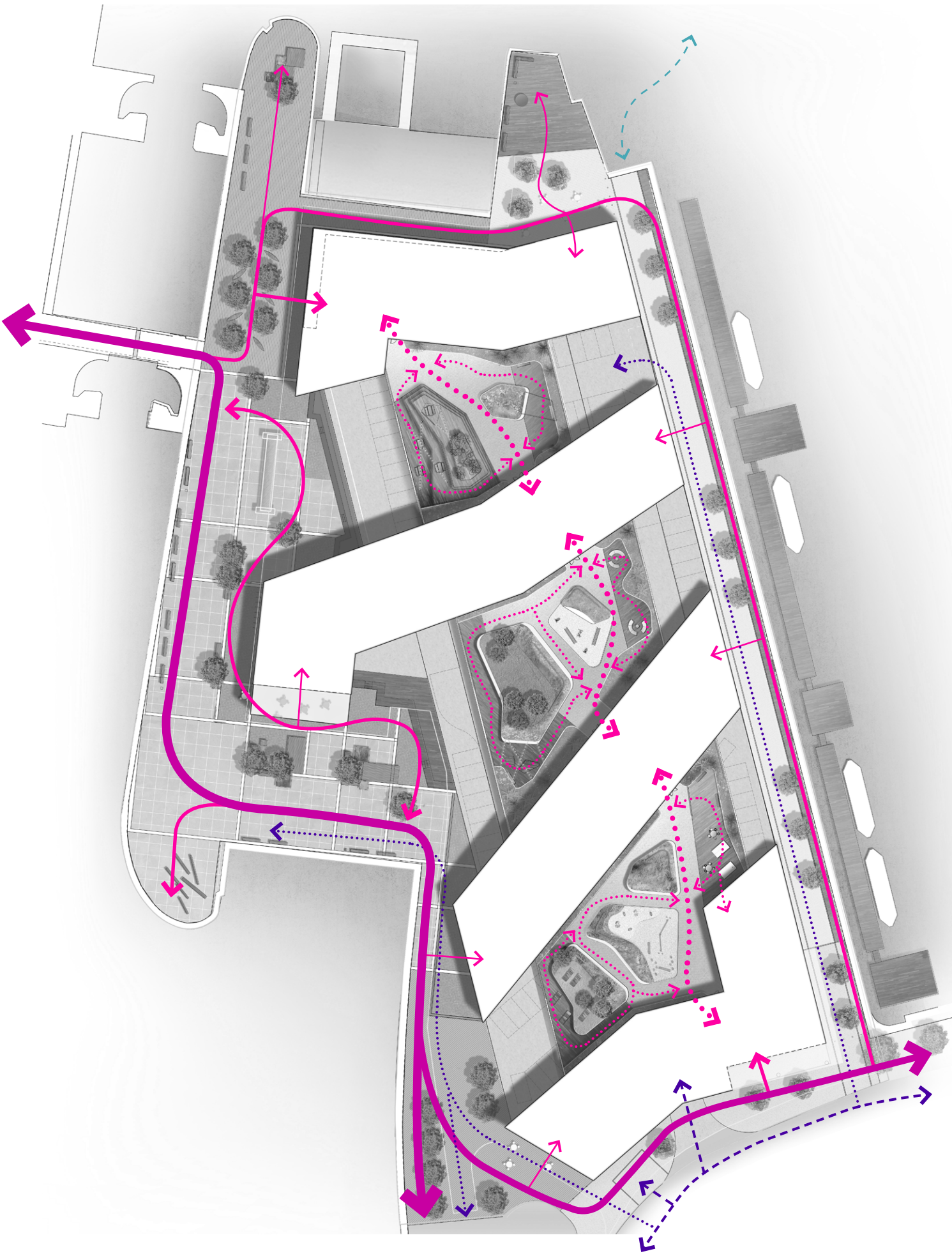
Secondary pedestrian circulation is proposed through the public realm providing access to seating areas, as well as the cafe/restaurant and other commercial facilities within the ground floor of the building. Further pedestrian circulation is proposed around the north and east of the development, along Brunswick Dock and to waterside viewing points. The scheme is designed to allow for the possibility of a future water taxi connection via Brunswick Dock (operated by others).

Resident circulation is proposed via entrances to the building at the north and south of the site and through the external piazza spaces.

The main vehicle access to the car park is via Brunswick Way, to the south of the site. Additional maintenance vehicle access is proposed via the shared surface parallel to Brunswick Dock.



fig. 16: Access & Circulation Plan



4.5 Boundaries

The adjacent plan illustrates the site boundary proposals.

The external space is intended to be open, permeable and publicly accessible. A new pedestrian barrier is proposed around the waters edge, along the riverside and dockside boundaries.

Adjacent to the riverside public realm, the ground floor car park is enclosed by the timber seating terraces and a living ivy screen, with metal mesh. On the dockside the car park is enclosed by a simple vertical hardwood timber screen with metal frame.

A pedestrian balustrade encloses the residents spaces at piazza level and around the eight floor communal terrace.

Note:
Alignment and specification of Riverside/Dockside Pedestrian Barrier is subject to agreement with the Canals & Rivers Trust.

LEGEND

Balustrade to piazza and roof terrace levels

Riverside/dockside pedestrian barrier

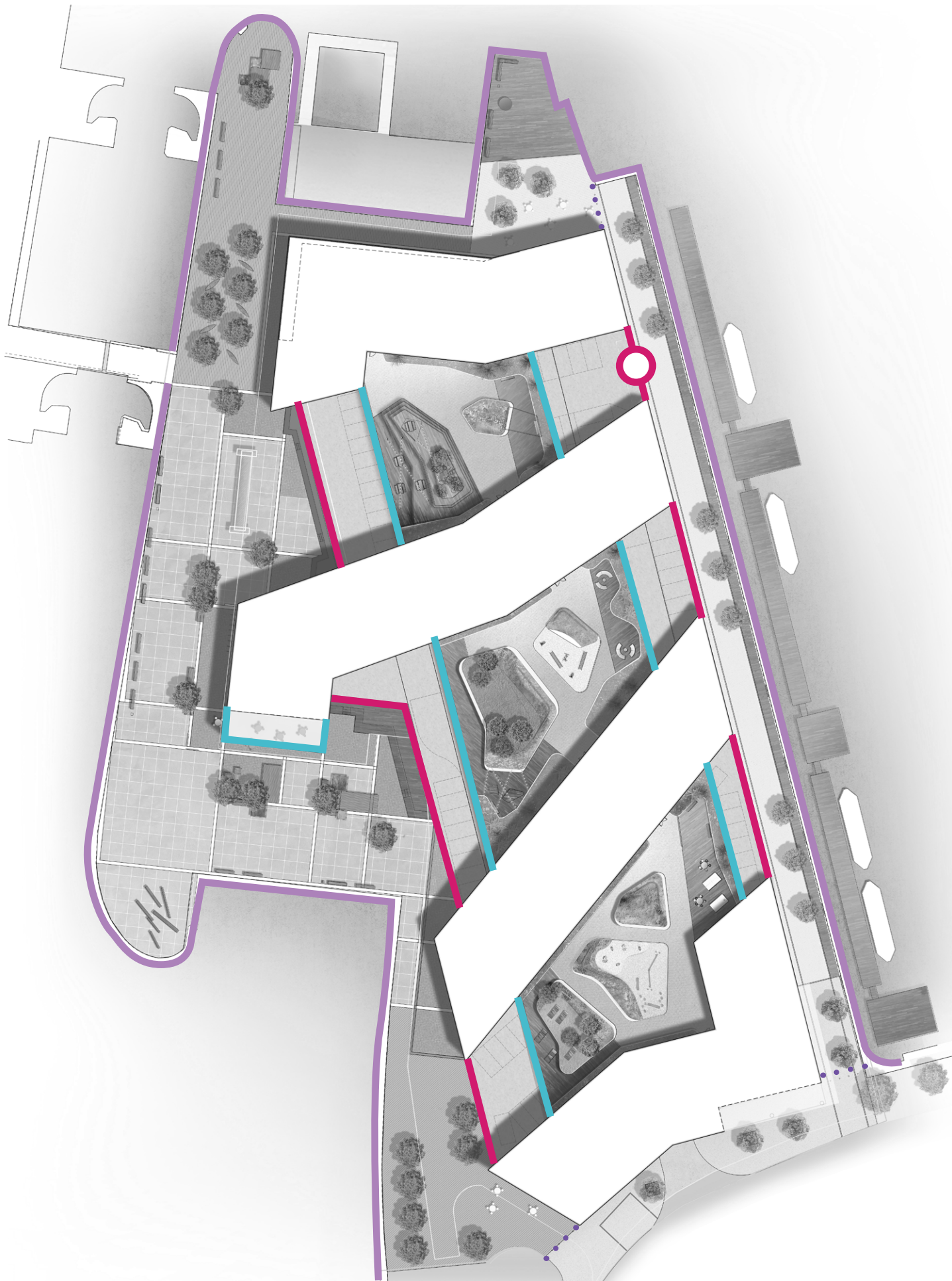
Vertical metal railings with climbing planting

Matching vehicle gate

Removable bollards

Scale NTS

fig. 17: Boundaries Plan



4.6 Feature Lighting Concept

The feature lighting concept incorporates the following elements:

1. Lighting effects/light art columns within the riverside public realm with changeable graphics
2. Lighting columns in public realm to provide a safe environment along the riverside pedestrian/cycle route
3. In-ground uplighting to trees within the public realm
4. Lighting bollards within the dockside public realm
5. Piazza level lighting bollards within social terraces
6. Recessed lighting beneath terraces, planters and public art
7. Piazza level way finding lighting along main movement routes
8. Piazza level festoon lighting within seating terraces and BBQ area

Note:

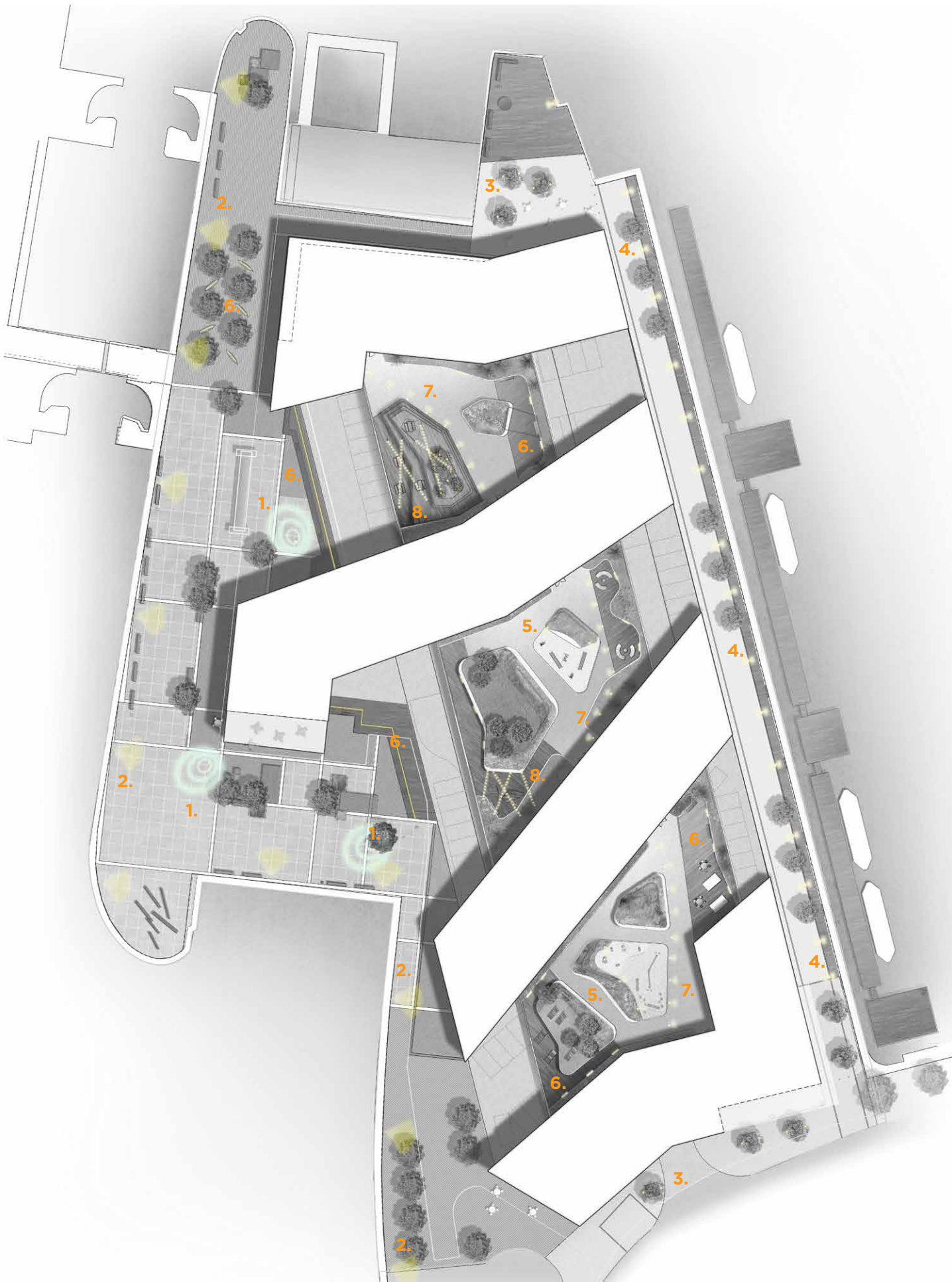
All lighting fittings and spacings are indicative only. Detailed lighting design and calculations are to be carried out by Lighting Engineer.

All lighting proposals beyond the ownership boundary are subject to agreement with the adjacent landowners.

Scale NTS

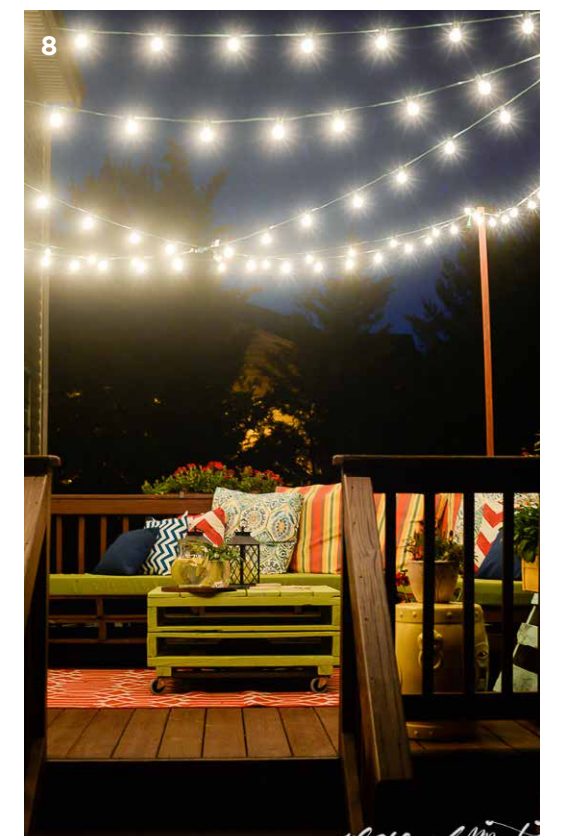
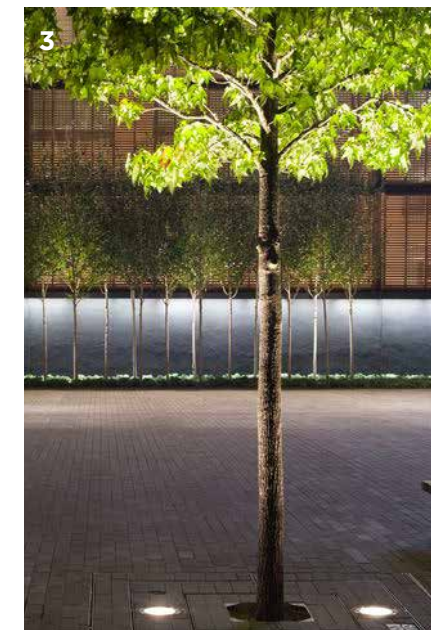
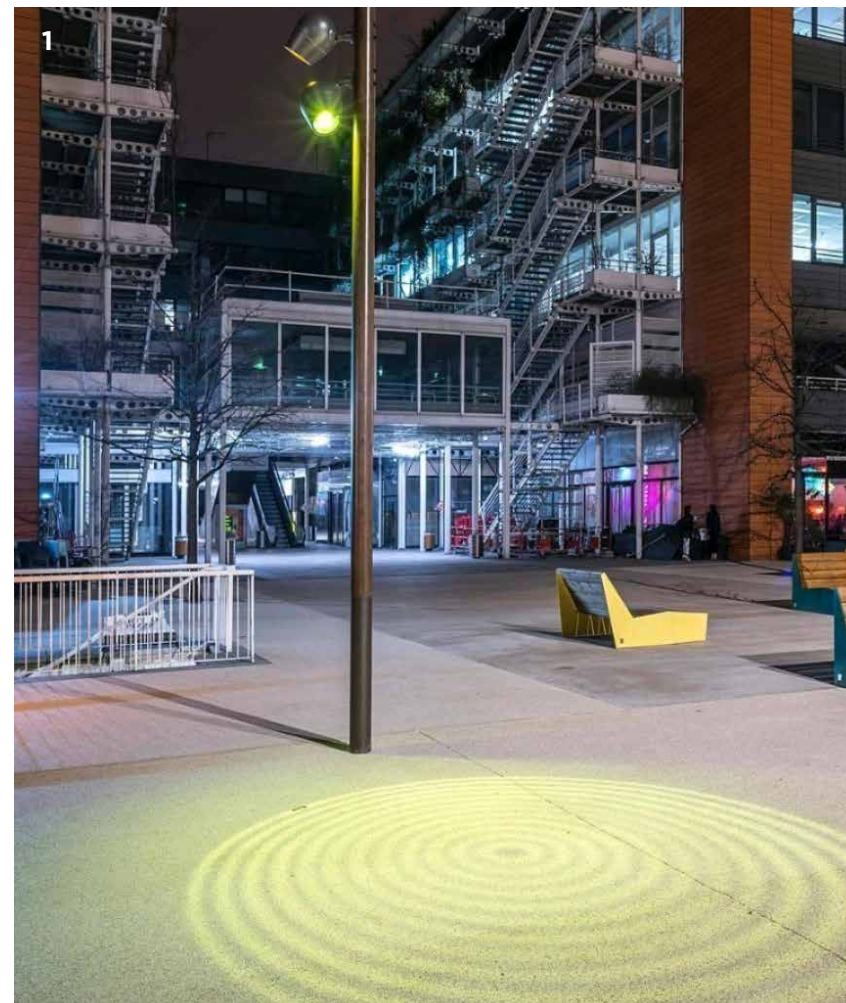


fig. 18: Feature Lighting Concept Plan



LEGEND

1. Lighting effects column in public realm
2. Lighting columns in public realm
3. In-ground uplighting to trees
4. Lighting bollards in public realm
5. Piazza level lighting bollards
6. Recessed lighting beneath terraces & planters
7. Piazza level way finding lighting
8. Piazza level festoon lighting



5. Site Sections

5.1 Site Sections

The adjacent site sections illustrate the relationship between the building, the proposed public realm and the waterside.

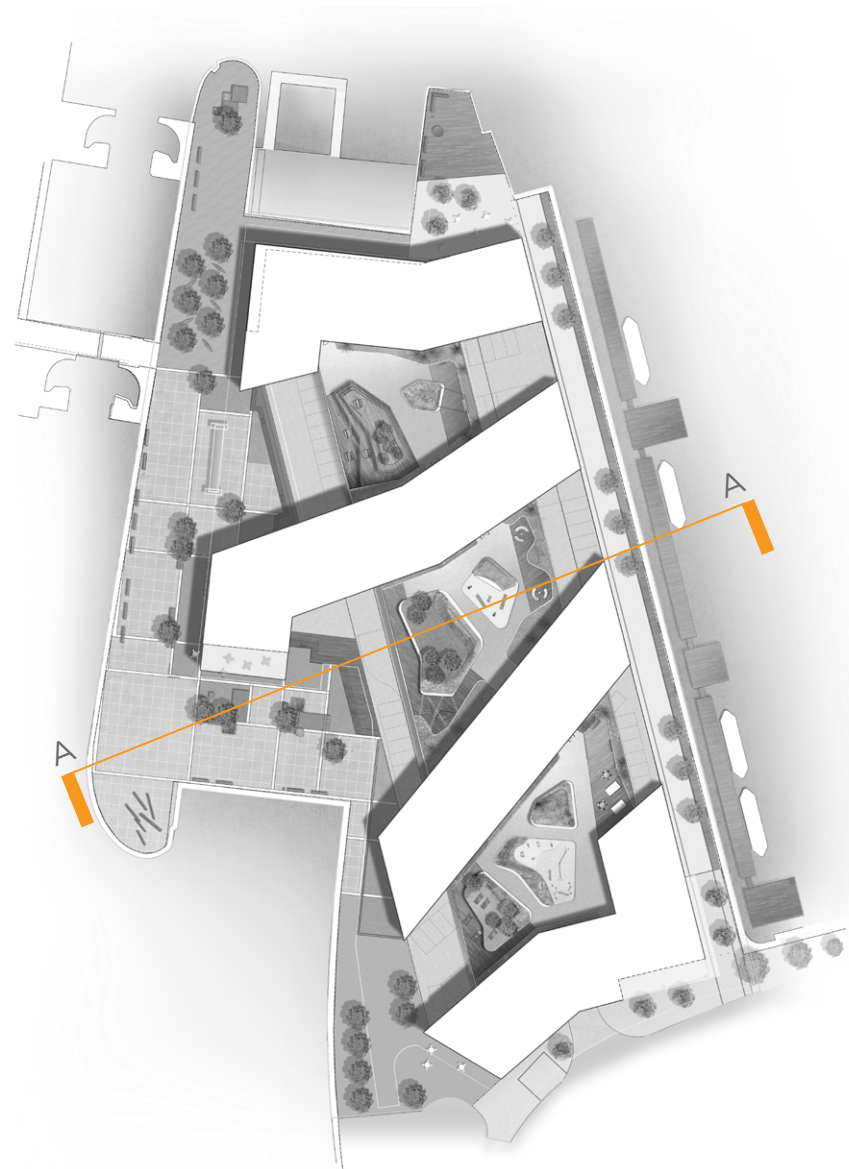


fig. 19: Section Location Plan

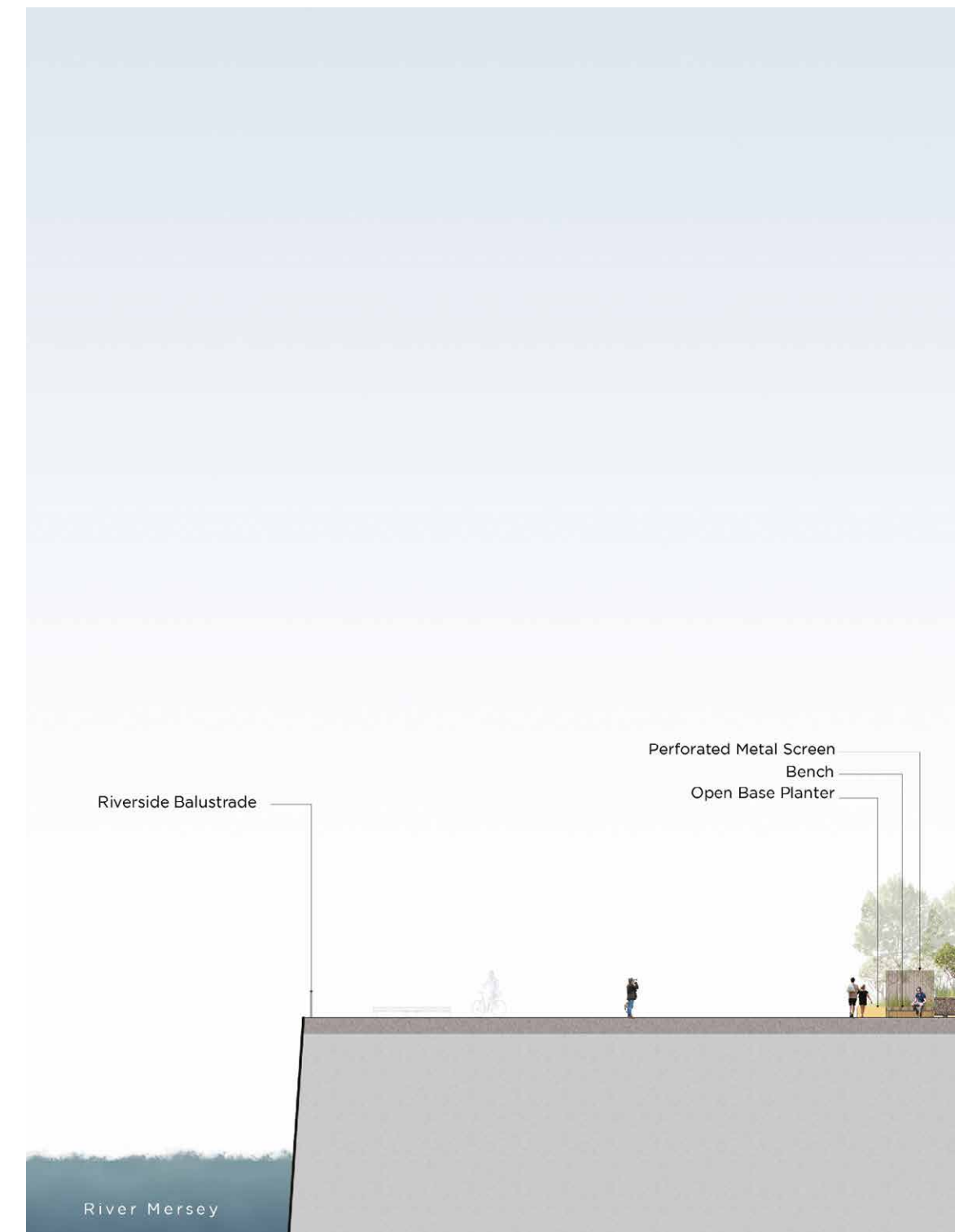
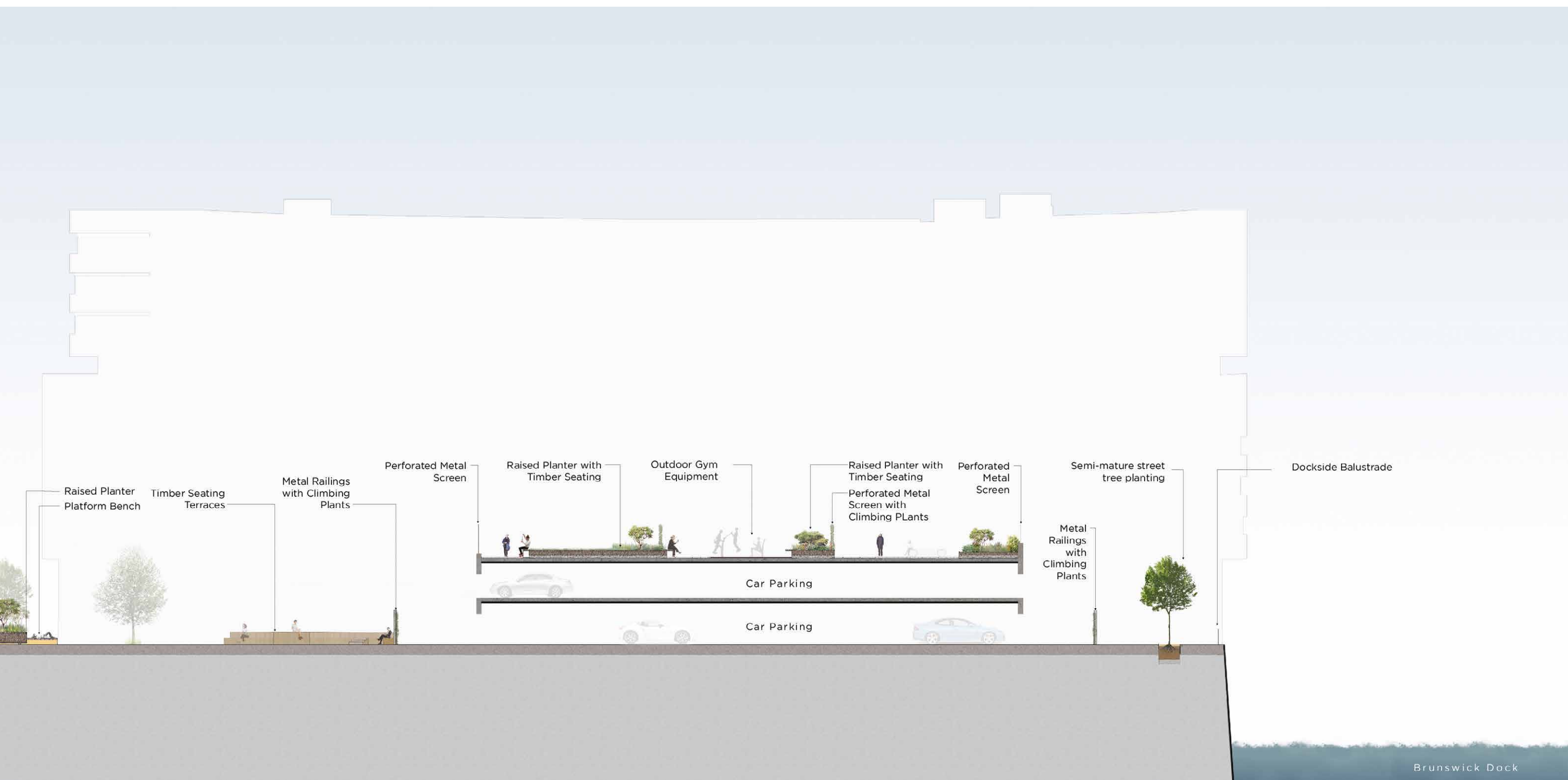


fig. 20: Section A-A



6. Indicative Materials Palette

6.1 Hard Landscape

Public Realm Paving

- P1

Large format slabs

Product: Hardscape Kellen Double Excel Metal Edge, or similar & approved

Size: 2 x 2m x 140mm depth

Colour/finish: Grisj / Standard & Embossed
- P2

Riverside paving 1

Product: Hardscape Kellen Lavarò, or similar & approved

Size: 60 x 240 x 80mm

Colour/finish: Grisj
- P3

Riverside paving 2

Product: Hardscape Kellen Lavarò, or similar & approved

Size: 60 x 240 x 80mm

Colour/finish: Zwart 509
- P4

Dockside paving

Product: Hardscape Kellen Magma, or similar & approved

Size: 60 x 240 x 80mm

Colour/finish: Magma
- P5

Entrance paving

Product: Hardscape Magma Granite, or similar & approved

Size: (a) 400mm gauge x 500-600mm length / (b) 100mm gauge x 150-250mm length

Colour/finish: Magma
- P6

Steps

Product: Hardscape Kellen Steps with contrasting nose strip, or similar & approved

Size: 80 x 200 x 1000mm

Colour/finish: Grisj
- P7

Timber decking

Product: Sarum Hardwood Structures hardwood decking with carborundum anti-slip inserts, or similar & approved

Size: TBC

- P8

Tactile Hazard Warning Paving

(Requirements TBC)
- P9

Resin bound gravel bands

Product: Addagrip Terrabound Resin Bound Gravel, or similar & approved

Size: 6-10mm aggregate / 75mm depth

Colour: Grey

Piazza Paving

- P10

Wetpour safety surface

Product: RTC Safety Wetpour Safety Surfacing, or similar & approved

Size: Thickness TBC

Colour: (a) Light Grey (b) Earth Yellow (c) Egg Shell
- P11

Timber decking on pedestals

Product: Sarum Hardwood Structures hardwood decking with carborundum anti-slip inserts, or similar & approved

Size: TBC
- P12

Granite paving on pedestals

Product: Hardscape Kellen Granite, or similar & approved

Size: 600 x 300 x 50mm

Colour/finish: Kobra / flamed

Kerbs & Edgings

- E1

Metal edge for hard landscape

Product: ExcelEdge AluExcel Aluminium Edging, or similar & approved

Size: 150mm depth
- E2

Metal Edge for soft landscape

Product: ExcelEdge AluExcel Aluminium Edging, or similar & approved

Size: 150mm depth
- K1

Flush kerb

Product: Hardscape flush kerb, or similar & approved

Size: 80 x 200 x 1000mm

Colour Grisj



6.2 Boundaries & Street Furniture

Public Realm Street Furniture

F1	Bench
	Product: Streetlife Rough and Ready 10 Bench, or similar & approved
	Size: 3000 x 1000mm
	Colour/finish: Natural timber / metalwork colour as indicated - TBC
F2	Cube bench
	Product: Streetlife Rough and Ready Cube, or similar & approved
	Size: 2400 x 1200 x 1200mm
	Colour/finish: Natural timber / metalwork colour as indicated - TBC
F3	Platform bench
	Product: Streetlife Podium Isle, or similar & approved
	Size: 3000 x 3000mm modules
	Colour/finish: Natural timber / metalwork colour as indicated - TBC
F4	Terrace
	Product: Streetlife Solid Timber Terrace, or similar & approved
	Size: TBC
	Colour/finish: Natural timber
F5	Removable bollard
	Product: Streetlife Rough and Ready Removable Bollard, or similar & approved
	Size: 750mm height
	Colour/finish: Natural timber / metalwork colour TBC
F6	Cycle stands
	Product: Vestre Forum Bicycle Rack, or similar & approved
	Size: 700 x 750mm (50mm dia.)
	Colour/finish: Metalwork colour as indicated - TBC
F7	Litter bin
	Product: Vestre Vroom Litter Bin, or similar & approved
	Size: 1000 x 400 x 400mm (80L capacity)
	Colour/finish: Metalwork colour as indicated - TBC
F8	Raised planter
	Product: Streetlife Shrub Tub Square, or similar & approved

	Size: 2500 x 2500 x 900mm height
	Colour/finish: Metalwork colour TBC
F9	Open base planter
	Product: Streetlife Bento Tree Box, or similar & approved
	Size: 1000mm height
	Colour/finish: Metalwork colour TBC
F10	Public Art Seating
	Product: Bespoke, smooth-planed, hardwood timber arranged as seating
	Size: 500-750mm width x 3000-5000mm length
F11	Tree grille
	Product: Streetlife Tree Grille Square, or similar & approved
	Size: 1500 x 1500mm
	Colour/finish: Corten Steel

Piazza External Furniture

F12	Metal raised planter
	Product: Kinley Planterline Bespoke, or similar & approved
	Size: 1500 x 1500mm
	Colour: Powder coated steel (colour to match architectural metalwork)
F13	Raised planter with timber seating
	Product: Planterline & HiGrade Bespoke Integrated Benches, or similar & approved
	Size: 450 - 500mm height
	Colour/finish: Natural/smooth planed
F14	Bench with armrests
	Product: Vestre Bloc Bench with armrests, or similar & approved
	Size: 1766 x 670 x 460mm
	Finish/colour: Natural timber - smooth planed
F15	Sun lounger
	Product: Vestre Bloc Sun Bench, or similar & approved
	Size: 1451 x 1356 x 389mm

	Finish/colour: Natural timber - smooth planed
F16	Table & Bench
	Product: Vestre Bloc Table & Bloc Bench with backrest, or similar & approved
	Size: Table 1740 x 630 x 740mm / Bench 1766 x 670 x 460mm
	Finish/colour: Natural timber - smooth planed
F17	Curved modular seating
	Product: Geomet Halo Modern modular circular seating, or similar & approved
F18	Picnic table
	Product: Vestre Buzz picnic table, or similar & approved
	Size: 1827 x seat 350 dia. x 455 height / table 938 dia. x 745 height
	Colour: TBC
F19	Table tennis table
	Product: AMV Table Tennis Table, or simimlar & approved
	Size: 2740 x 1500 x 774mm
F20	Timber / Wire Pergola
	Product: Bespoke hardwood pergola with galvanised steel wires
	Size: 4030 x 3525 x 2500mm
	Colour/finish: Natural / smooth planed finish
F21	Timber Seating Platforms
	Product: Bespoke hardwood timber seating platforms
	Size: 450mm height
	Colour/finish: Natural / smooth planed finish
F22	Outdoor Gym Equipment
	Product: Mantleisure Adult Gym Equipment, or similar & approved
	Finish/colour: TBC
F23	Early Years Play Equipment
	Product: TBC
F24	Timber Seating Cubes
	Product: Streetlife Rough and Ready Cube, or similar & approved
	Size: 600 x 600 x 450mm
	Colour/finish: Natural timber / metalwork colour as indicated - TBC

Boundaries

- B1

Riverside balustrade

Specification to be agreed with Canals & Rivers Trust
- B2

Vertical metal railings with climbing plants at base

Product: Lang + Fulton Rimini Flat Bar Railing, or similar & approved

Size: 2.4m height

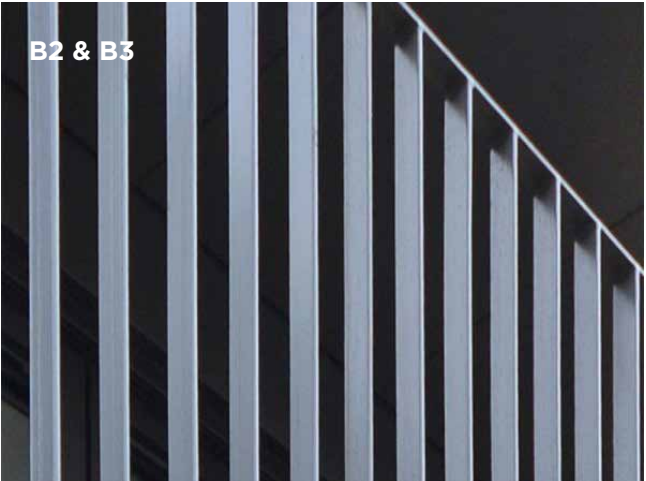
Colour/finish: Powder coated steel (colour to match architectural metalwork)
- B3

Vertical metal railings with climbing plants at base

Product: Lang + Fulton Rimini Flat Bar Railing, or similar & approved

Size: 1.1m height

Colour/finish: Powder coated steel (colour to match architectural metalwork)



Wind Mitigation

- F25

Perforated Screen in Balustrade

Product: Perforated metal panel within dockside balustrade

Size: approx. 1.1m height
- F26

Perforated Screen in Planting

Product: Perforated PPC steel panel/trellis with climbing planting

Size: 2m height
- F27

Free Standing Perforated Screen within Public Realm

Product: Perforated PPC steel panel

Size: 2.5m height
- F28

Free Standing Perforated Screen at Piazza Level

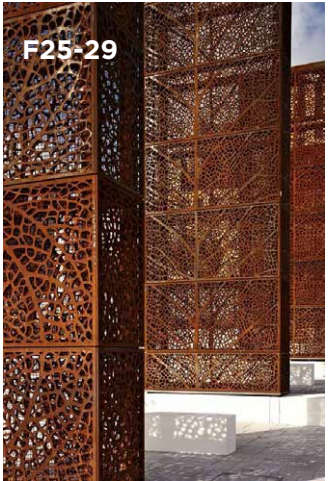
Product: Perforated corten steel panel / balustrade

Size: 2.0m height
- F29

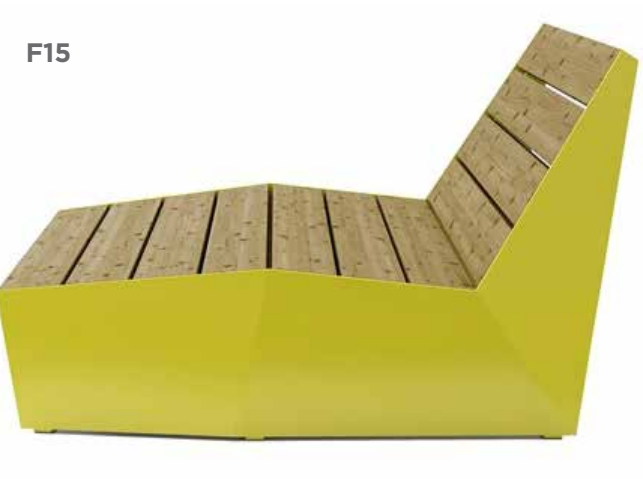
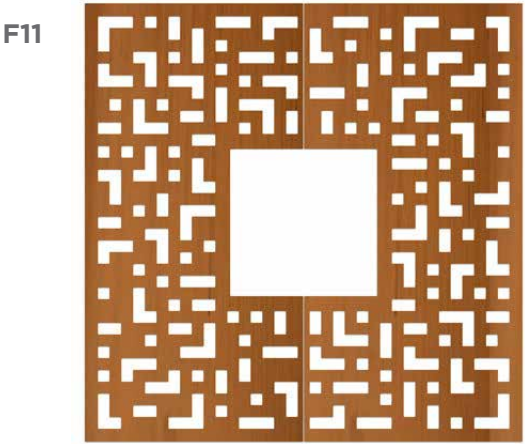
Free Standing Perforated Metal Public Art Structures

Product: Perforated corten steel art/baffle

Size: 2.5-3.0m height / 2.0-4.0m width







7. Indicative Planting Palette

7.1 Trees

The indicative palette of tree planting has been chosen to be robust and suitable for the microclimate of the site, including a tolerance for exposed, windy conditions in close proximity to the coast.

The layout of proposed trees is intended to enhance the existing streetscape along Brunswick Way and contribute to the appearance of the proposed waterside public realm.

Additional tree planting is intended to provide visual amenity and shelter within the resident's piazza spaces.

Street Trees

T1	Acer platanoides
	RB / 25-30cmg / 5.0-5.5m H / 2.5m clear stem
T2	Acer pseudoplatanus
	RB / 25-30cmg / 5.0-5.5m H / 2.5m clear stem
T3	Alnus glutinosa
	RB / 25-30cmg / 5.0-5.5m H / 2.5m clear stem
T4	Sorbus latifolia ‘Henk Vink’
	RB / 25-30cmg / 5.0-5.5m H / 2.5m clear stem

Piazza Trees

T5	Cercis siliquastrum
	CG / 2.0-2.5m H / multi-stem
T6	Gleditsia triacanthos ‘Sunburst’
	RB / 3.0-3.5m H / multi-stem
T7	Prunus cerasifera ‘Nigra’
	RB / 20-25cmg / 4.0-4.5m H / 2.5m clear stem



7.2 Shrubs

The palette of shrubs, perennials and ornamental grasses, within the public realm and piazzas, is to include the following species.

Shrubs

SH1	Euonymus japonicus ‘Microphyllus Aureovariegatus’
SH2	Genista lydia
SH3	Griselinia littoralis
SH4	Hebe salicifolia
SH5	Laurus nobilis
SH6	Lonicera pileata
SH7	Perovskia atriplicifolia
SH8	Pinus mugo
SH9	Rosmarinus officinalis
SH10	Santolina ‘Rosmarinifolia’

Perennials

PE1	Alchemilla erythropoda
PE2	Armeria maritima
PE3	Echinops bannaticus
PE4	Eryngium variifolium
PE5	Geranium oxonianum ‘Lace Time’
PE6	Hyssopus officinalis
PE7	Kniphofia ‘Safranvogel’
PE8	Limonium platyphyllum
PE9	Rudbeckia hirta ‘Indian Summer’
PE10	Stachys byzantina

Ornamental Grasses

GR1	Elymus magellanicus
GR2	Festuca glauca ‘Golden Toupee’
GR3	Helictotrichon sempervirens
GR4	Miscanthus nepalensis

Climbing Plants

CL1	Hedera helix ‘Hibernica’
CL2	Pileostegia viburnoides



