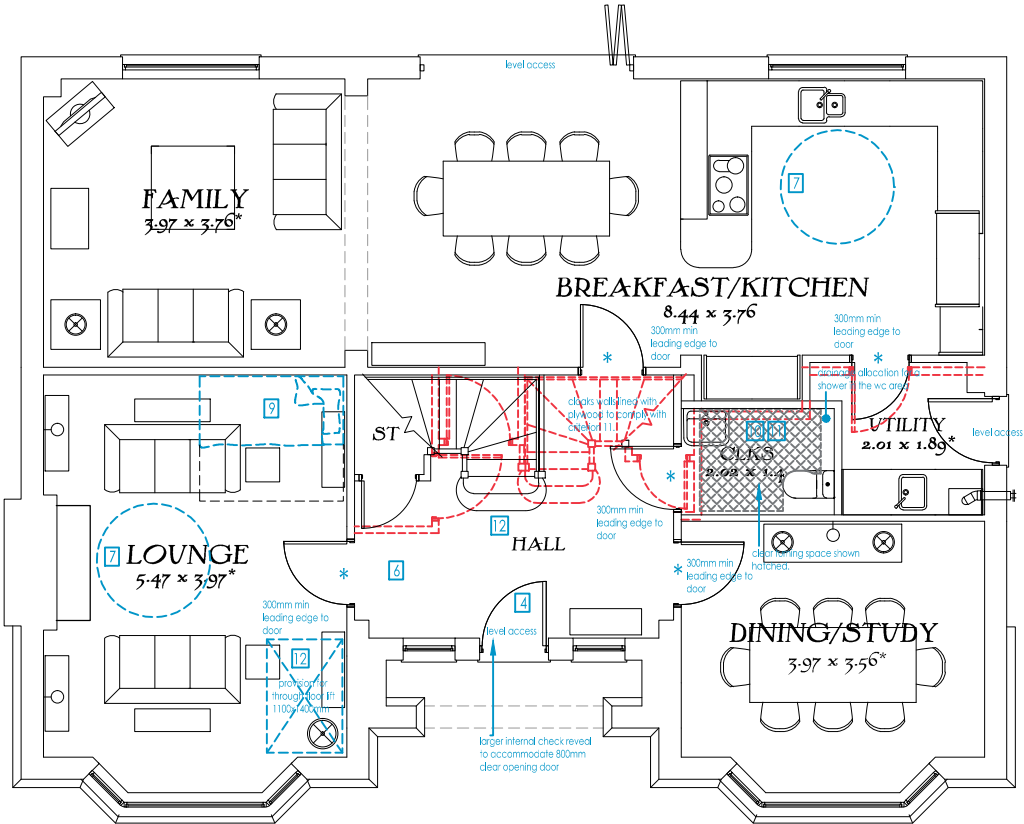


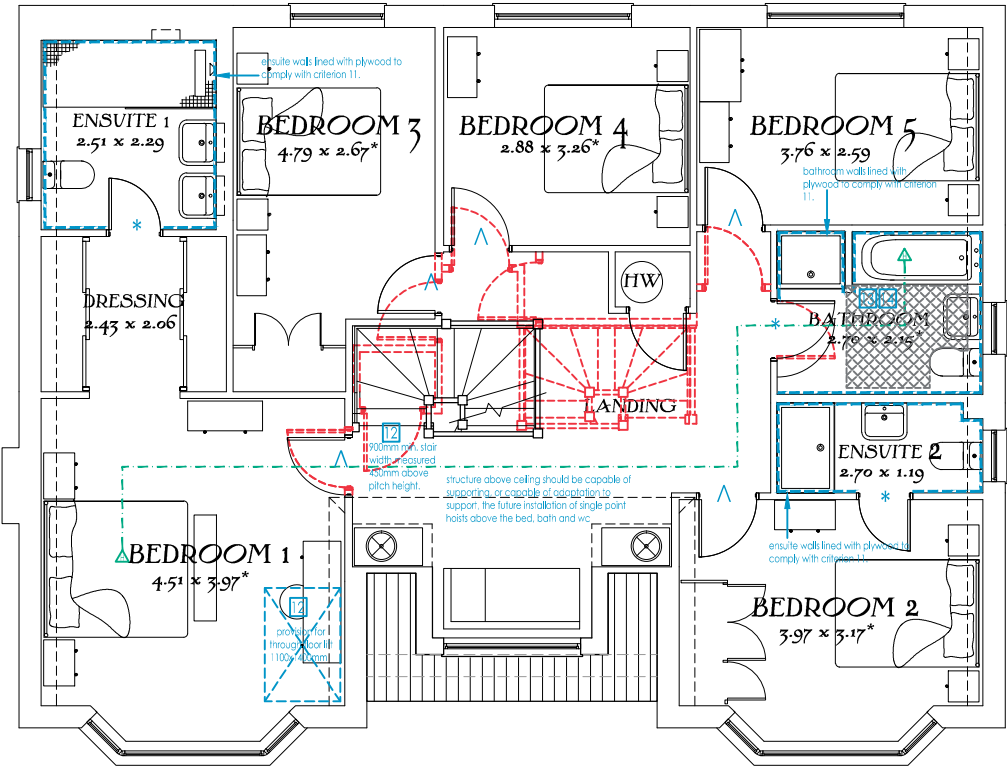
- Entrances to have light fitting, level access threshold and canopy. Min clear width 800mm with min 300mm nib at leading edge of door swing.
  - Minimum clear widths for hallways and door openings.
  - Wheel chair access and turning circle in living areas.
  - Entrance level living space
  - Potential for entrance level bed space
  - Entrance level WC compartment and
  - Provision for future grab rails within WC's and bathroom facilities.
  - Minimum stair width of 900mm, stair lift potential and through floor lift.
  - Hoist from principle bedroom to bathroom facility.
  - Accessible bathroom facility.
  - Glazing and window handle heights.
  - Location of service controls
- For further details please refer to Life Time Homes Revised Criteria Document July 2010

**General Notes**

- Each habitable room to have 1 No. operable window with controls no higher than 1200mm from finished floor level (kitchen & bathroom window not applicable).
- All service controls should be within a height of 450mm to 1200mm from finished floor. Services include switches, sockets, tv / telephone points, consumer units, heating programmer / radiator thermostats, and water stop tap.



Ground Floor



First Floor

**Key:-**

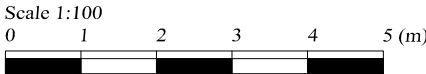
- Location of walls / doors on standard house type shown in red.
- Extra items required to comply with Lifetime Homes shown in blue.
- Track Hoist route shown in green.
- Clear space required in WC & Bathroom.

**Criterion 6:-**

- \* Denotes 750mm Min. Clear Width
- ^ Denotes 775mm Min. Clear Width
- # Denotes 900mm Min. Clear Width

**General Notes**

- Each habitable room to have 1 No. operable window with controls no higher than 1200mm from finished floor level (kitchen & bathroom window not applicable).
- All service controls should be within a height of 450mm to 1200mm from finished floor. Services include switches, sockets, tv / telephone points, consumer units, heating programmer / radiator thermostats, and water stop tap.



**The Blenheim**  
Heritage Collection  
"2016 Edition"  
Lifetime Homes  
EF Series

2306sqft 214.19m<sup>2</sup>  
DATE: March 2016  
REV: -

EF\_BLEN\_DM.4

Drawing Scale 1:100 @ A3  
Bedroom dimensions taken into wardrobe recess  
\* Maximum Dimension

