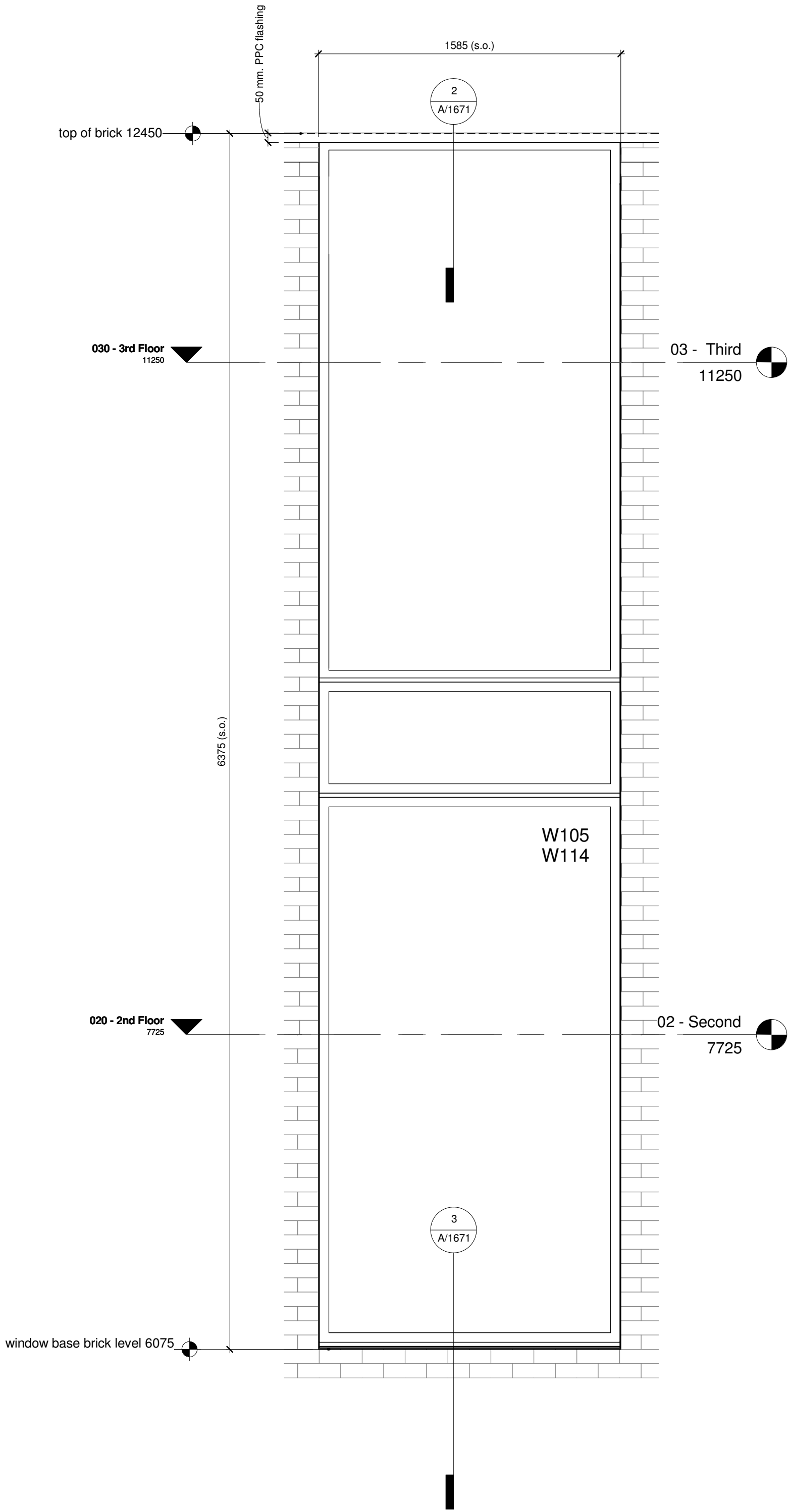


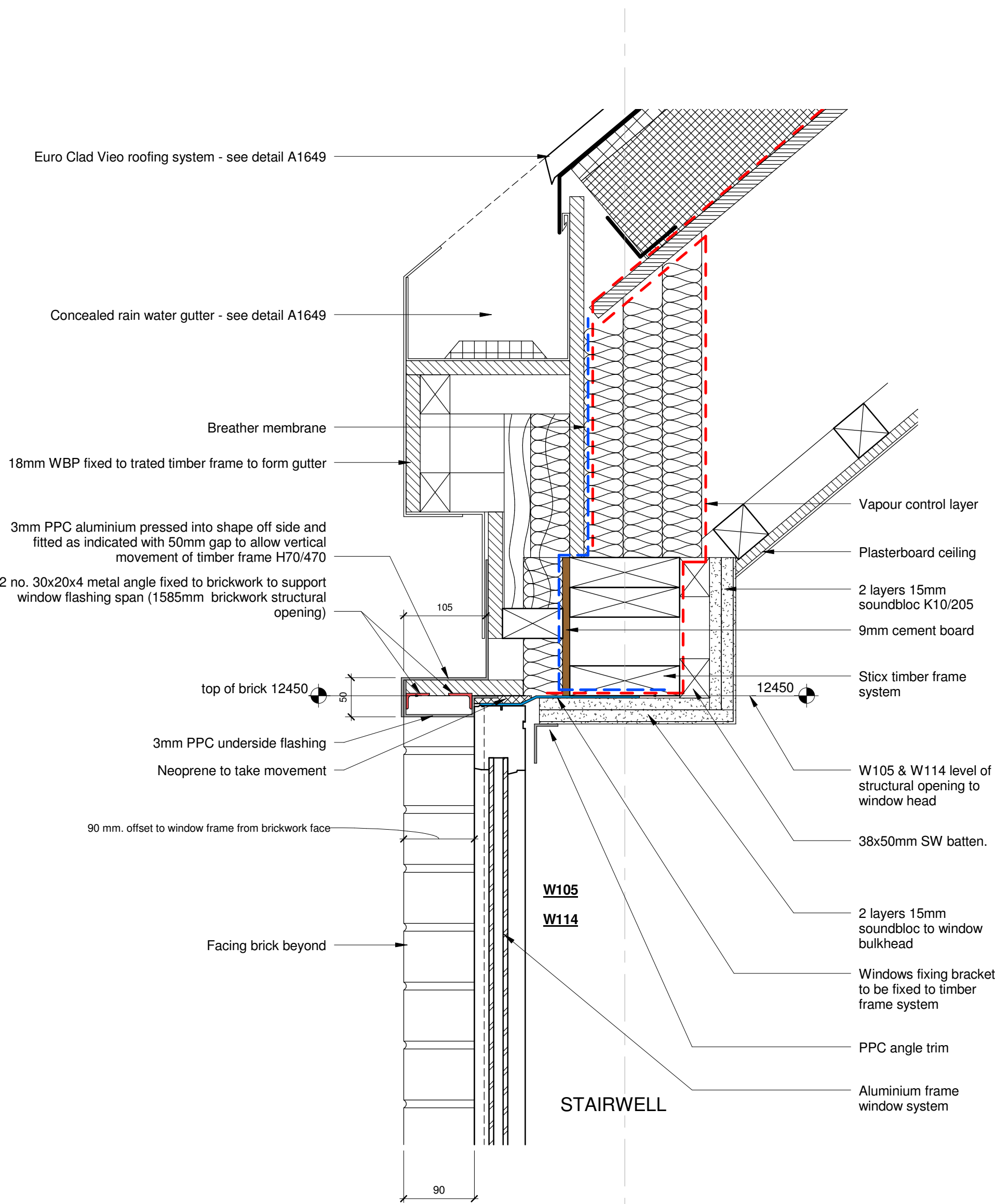
Notes

NOTE  
This drawing is not to be scaled. All dimensions to be checked on site and any discrepancies to be reported to the Mouchel Office. All material is produced on behalf of Mouchel Ltd. All drawings to be read in conjunction with specification where applicable.

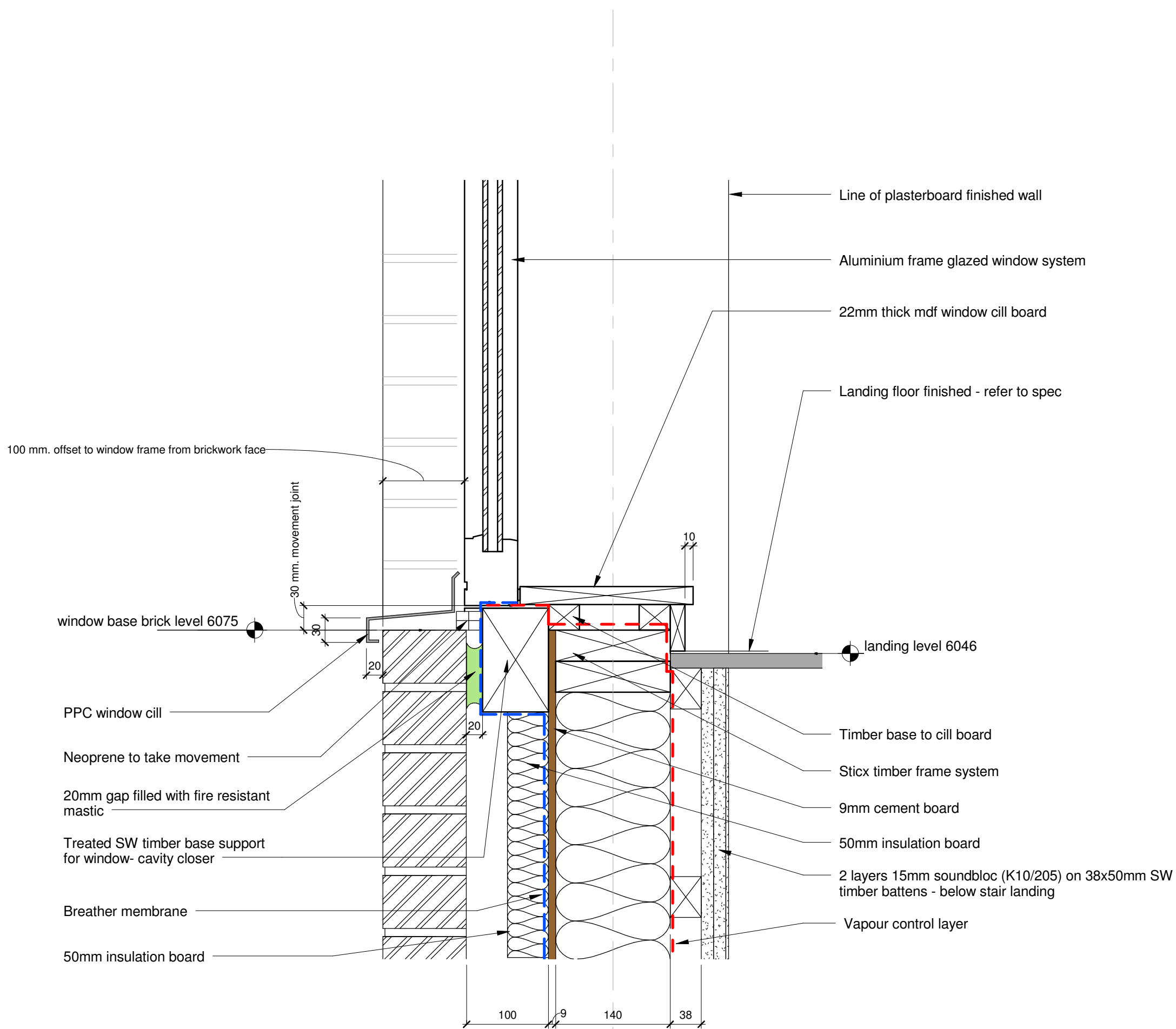
Based upon the Ordnance Survey map with the permission of the Controller of Her Majesty's Stationery Office. © Crown Copyright Licence No. LA07649X.



01 - Stairwell Window Elevation Detail  
1 : 20



02 - Window Head ( W105 and W114) Detail  
1 : 5



03 - Window Base (W105 and W114) Detail  
1 : 5

A	Window cavity closer detail amended			RD	OK	OK	
Version	Revision Description			Rev Date	Drawn by	Checked By	
				10/09/2015	10/09/2015	10/09/2015	
<div><div><div><div><div></div><div></div><div></div></div><div><div></div><div></div><div></div></div></div><div><div><div></div><div></div><div></div></div><div><div></div><div></div><div></div></div></div><div>building great relationships</div></div></div>				Client	Morgan Sindall		
				Project	Bellerive		
Purpose				Drawing Title	Stairwell Window Details		
Construction							
Draft	<div><div></div><div></div><div></div></div>	Scale (at A1 size)	Issuing Office	LIVERPOOL	Drawing Number	Version  A	
Issue	<div><div></div><div></div><div></div></div>	As indicated	Telephone	0151 600 5500	Bellerive/A/1671		