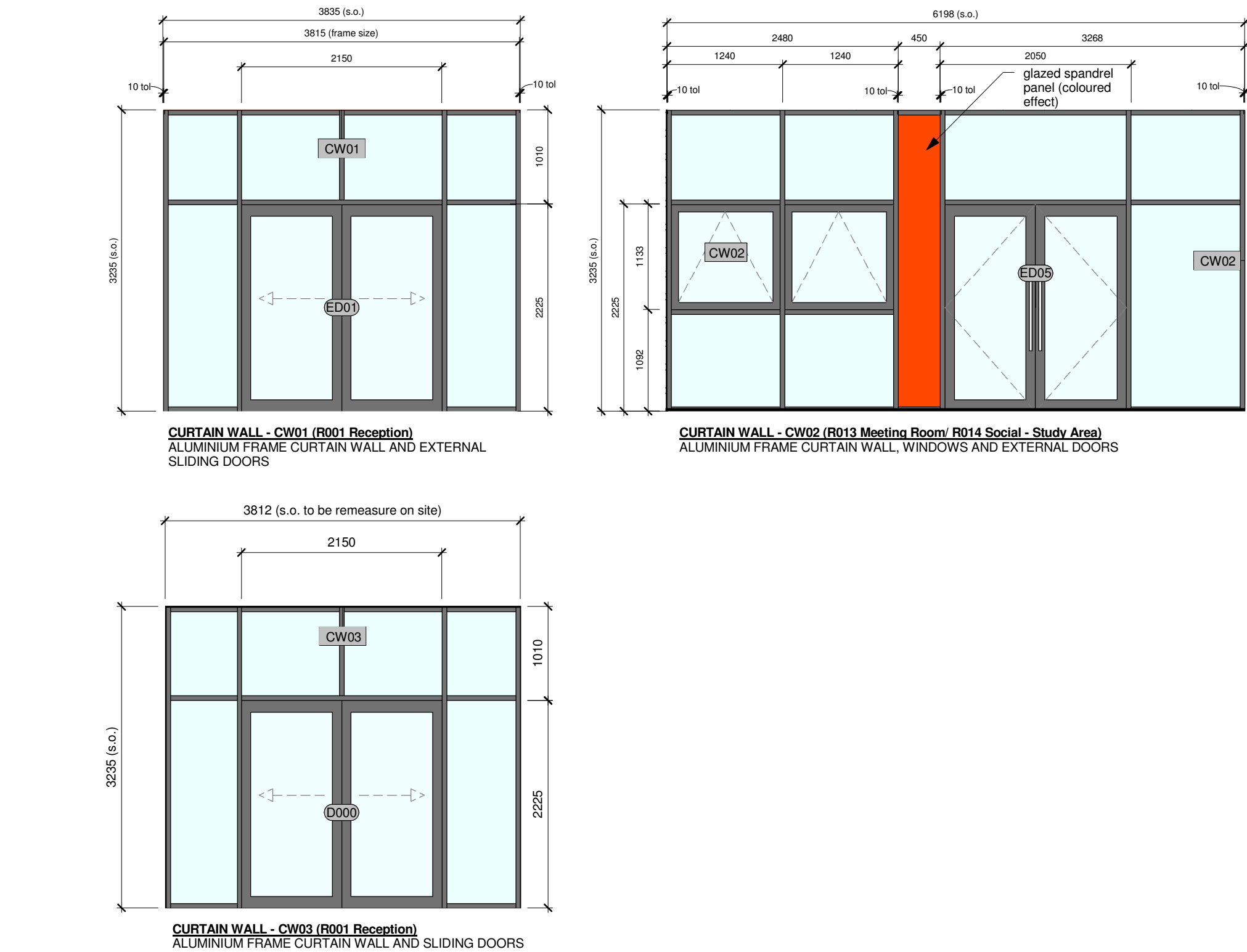
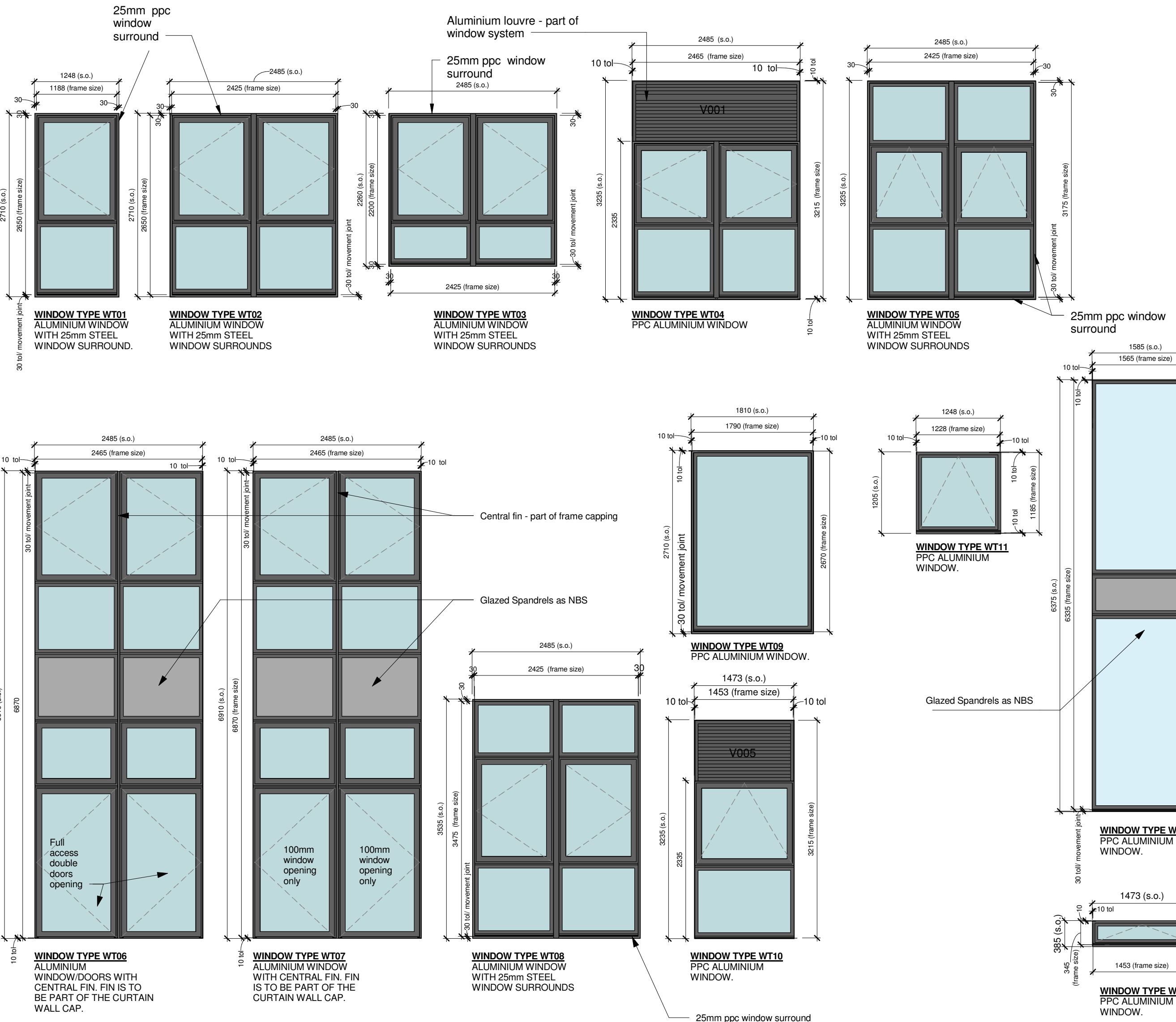


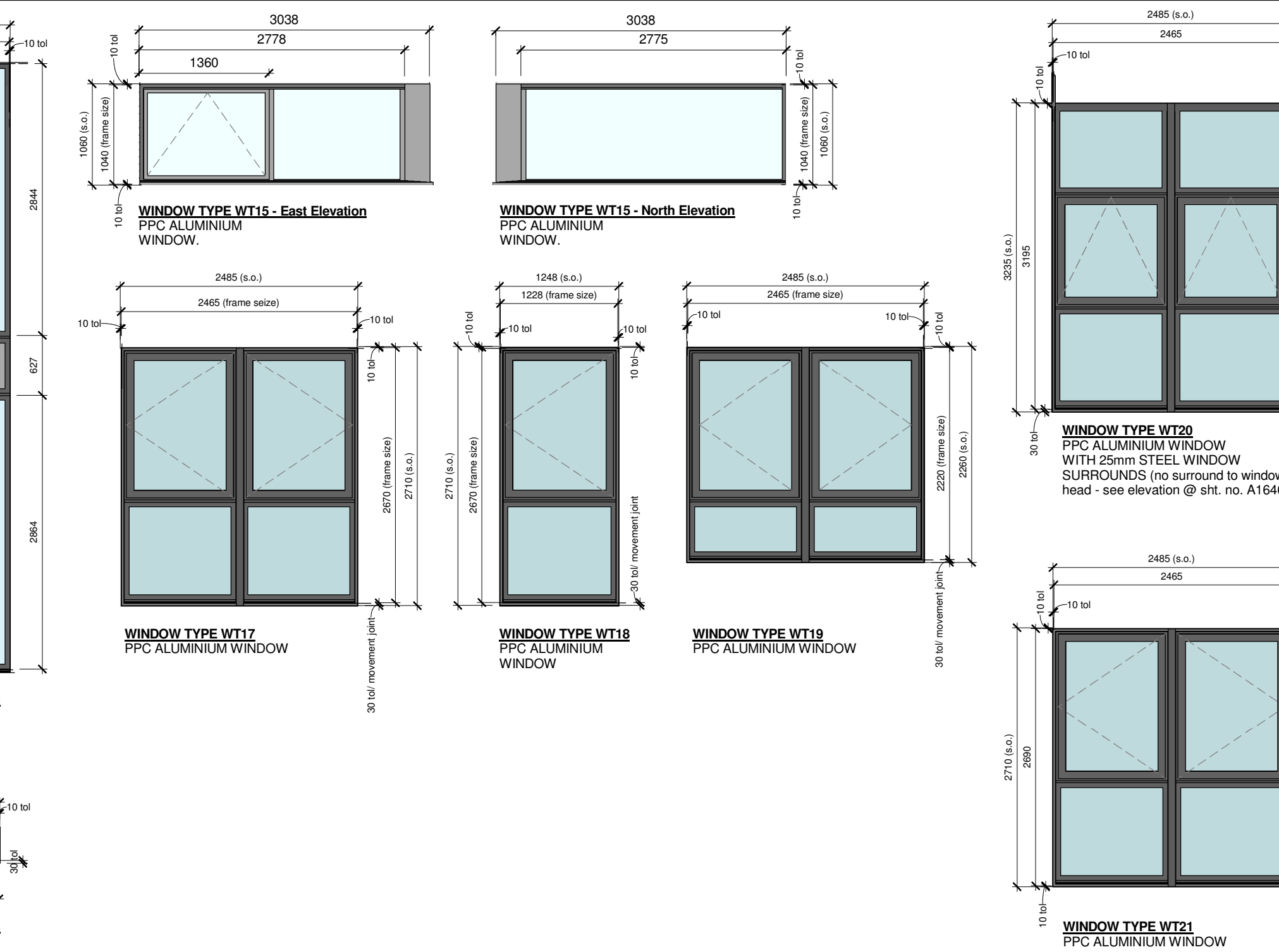
External Window Schedule									
Window Number	Room Number	Room Name	Level	Window Type	S.O. Width	S.O. Height	Comments		
W001	R026	Dining	000 - Ground Floor	WT02	2485	8910	Bay window type-1 - See detail A1646 (Double access doors to Ground Floor)		
W002	R026	Dining	000 - Ground Floor	WT20	2485	3235	Ground Floor window @ recessed brickwork - see detail A1642		
W003	R026	Dining	000 - Ground Floor	WT06	2485	8910	Bay window type-1 - See detail A1646 (Double access doors to Ground Floor)		
W004	R002	Office	000 - Ground Floor	WT07	2485	8910	Bay window type-2 and garage - See detail A1661 (Window opening 120mm)		
W005	R004	Large Meeting Room	000 - Ground Floor	WT20	2485	3235	Ground Floor window @ recessed brickwork - see detail A1642		
W006	R003	Head Teacher's Office	000 - Ground Floor	WT07	2485	8910	Bay window type-1 - See detail A1646 (Window opening 100mm)		
W007	R015	Music / Chapel	000 - Ground Floor	WT04	2485	2335	Aluminium Frame glazed window with louvre vent above		
W008	R020	Music Tech	000 - Ground Floor	WT10	1473	2335	Aluminium Frame glazed window with louvre vent above		
W009	R020	Music Tech	000 - Ground Floor	WT09	2485	3235	Ground Floor window @ recessed brickwork - see detail A1642		
W010	R025	Kitchen	000 - Ground Floor	WT15	3038	1060	Kitchen deep recessed window - see detail A1653		
W101	R117	General Classroom	010 - 1st Floor	WT02	2485	2710	1st Floor window @ recessed brickwork - see detail A1642		
W102	R119	General Classroom	010 - 1st Floor	WT02	2485	2710	1st Floor window @ recessed brickwork to head - see detail A1670		
W103	R120	General Classroom	010 - 1st Floor	WT02	2485	2710	1st Floor window @ recessed brickwork - see detail A1642		
W104	R101	Lobby	010 - 1st Floor	WT09	1810	2710	Side Elevation Window @ Recessed Brickwork Panel See detail 2 @ A1645		
W105	R202	Starwell 1	010 - 1st Floor	WT12	1585	6235	Window @ Starwell Area - See Detail A1671		
W106	R103	ITC	010 - 1st Floor	WT13	1473	385	ITC window with 25mm recessed brickwork panel on one side - see detail A1672 (same as toilet windows)		
W107	R104	Female WC	010 - 1st Floor	WT13	1473	385	Toilet window with 25mm recessed brickwork panel on one side - see detail A1672		
W108	R107	Small 6th Form Classroom	010 - 1st Floor	WT17	2485	2710	Standard aluminium frame windows - window head to be installed with 2mm (15mm depth) PPC aluminium cover to lintel - see detail-1 & 2 @ A1673		
W109	R107	Small 6th Form Classroom	010 - 1st Floor	WT17	2485	2710	Standard aluminium frame windows - window head to be installed with 2mm (15mm depth) PPC aluminium cover to lintel - see detail-1 & 2 @ A1673		
W110	R110	General Classroom	010 - 1st Floor	WT19	2485	2260	Standard aluminium frame windows - window head to be installed with 2mm (15mm depth) PPC aluminium cover to lintel - see detail-1 & 2 @ A1673		
W111	R110	General Classroom	010 - 1st Floor	WT19	2485	2260	Standard aluminium frame windows - window head to be installed with 2mm (15mm depth) PPC aluminium cover to lintel - see detail-1 & 2 @ A1673		
W112	R111	General Classroom	010 - 1st Floor	WT19	2485	2260	Standard aluminium frame windows - window head to be installed with 2mm (15mm depth) PPC aluminium cover to lintel - see detail-1 & 2 @ A1673		
W113	R111	General Classroom	010 - 1st Floor	WT19	2485	2260	Standard aluminium frame windows - window head to be installed with 2mm (15mm depth) PPC aluminium cover to lintel - see detail-1 & 2 @ A1673		
W114	R211	Starwell 2	010 - 1st Floor	WT12	1585	6235	Window @ Starwell Area - See Detail A1671		
W115	R113	Lobby	010 - 1st Floor	WT09	1810	2710	Side Elevation Window @ Recessed Brickwork Panel See detail 2 @ A1645		
W116	R114	General Classroom	010 - 1st Floor	WT02	2485	2710	Standard aluminium frame windows - window head to be installed with 2mm (15mm depth) PPC aluminium cover to lintel - see detail		
W117	R114	General Classroom	010 - 1st Floor	WT02	2485	2260	1st Floor window @ recessed brickwork to head - see detail A1670		
W201	R217	6th Form Classroom	020 - 2nd Floor	WT01	1248	2710	Aluminium frame windows with 25mm ppc surround - see detail 3 & detail 4 @ A1673		
W202	R217	6th Form Classroom	020 - 2nd Floor	WT02	2485	2710	Aluminium frame windows with 25mm ppc surround - see detail 3 & detail 4 @ A1673		
W203	R218	Office	020 - 2nd Floor	WT01	1248	2710	Aluminium frame windows with 25mm ppc surround - see detail 3 & detail 4 @ A1673		
W204	R219	General Classroom	020 - 2nd Floor	WT02	2485	2710	Aluminium frame windows with 25mm ppc surround - see detail 3 & detail 4 @ A1673		
W205	R219	General Classroom	020 - 2nd Floor	WT01	1248	2710	Aluminium frame windows with 25mm ppc surround - see detail 3 & detail 4 @ A1673		
W206	R220	General Classroom	020 - 2nd Floor	WT02	2485	2710	Aluminium frame windows with 25mm ppc surround - see detail 3 & detail 4 @ A1673		
W207	R220	General Classroom	020 - 2nd Floor	WT01	1248	2710	Aluminium frame windows with 25mm ppc surround - see detail 3 & detail 4 @ A1673		
W208	R201	Lobby	020 - 2nd Floor	WT09	1810	2710	Side Elevation Window @ Recessed Brickwork Panel See detail 2 & detail 3 @ A1645 (similar details)		
W209	R203	Male WC	020 - 2nd Floor	WT13	1473	385	Toilet window with 25mm recessed brickwork panel on one side - see detail A1672		
W210	R204	Female WC	020 - 2nd Floor	WT13	1473	385	Toilet window with 25mm recessed brickwork panel on one side - see detail A1672		
W211	R207	Small 6th Form Classroom	020 - 2nd Floor	WT17	2485	2710	Standard aluminium frame windows - window head to be installed with 2mm (15mm depth) PPC aluminium cover to lintel - see detail-1 & 2 @ A1673		
W212	R207	Small 6th Form Classroom	020 - 2nd Floor	WT18	1248	2710	Standard aluminium frame windows - window head to be installed with 2mm (15mm depth) PPC aluminium cover to lintel - see detail-1 & 2 @ A1673		
W213	R209	6th Form Classroom	020 - 2nd Floor	WT18	1248	2710	Standard aluminium frame windows - window head to be installed with 2mm (15mm depth) PPC aluminium cover to lintel - see detail-1 & 2 @ A1673		
W214	R209	6th Form Classroom	020 - 2nd Floor	WT17	2485	2710	Standard aluminium frame windows - window head to be installed with 2mm (15mm depth) PPC aluminium cover to lintel - see detail-1 & 2 @ A1673		
W215	R210	6th Form Classroom	020 - 2nd Floor	WT17	2485	2710	Standard aluminium frame windows - window head to be installed with 2mm (15mm depth) PPC aluminium cover to lintel - see detail-1 & 2 @ A1673		
W216	R210	6th Form Classroom	020 - 2nd Floor	WT18	1248	2710	Standard aluminium frame windows - window head to be installed with 2mm (15mm depth) PPC aluminium cover to lintel - see detail-1 & 2 @ A1673		
W217	R212	Lobby	020 - 2nd Floor	WT09	1810	2710	Side Elevation Window @ Recessed Brickwork Panel See detail 2 & detail 3 @ A1645 (similar details)		
W218	R213	6th Form Classroom	020 - 2nd Floor	WT01	1248	2710	Aluminium frame windows with 25mm ppc surround - see detail 3 & detail 4 @ A1673		
W219	R213	6th Form Classroom	020 - 2nd Floor	WT02	2485	2710	2nd Floor window @ recessed brickwork to base - see detail A1670		
W301	R317	Y12 Common Room	030 - 3rd Floor	WT11	1248	1265	See Section Detail A1622 Dormer Window type-2		
W302	R317	Y12 Common Room	030 - 3rd Floor	WT08	2485	3535	See Section Detail A1622 Dormer Window type-1		
W303	R318	Y12 Common Room	030 - 3rd Floor	WT11	1248	1265	See Section Detail A1622 Dormer Window type-2		
W304	R318	Y12 Common Room	030 - 3rd Floor	WT08	2485	3535	See Section Detail A1622 Dormer Window type-1		
W305	R319	6th Form Heads Office	030 - 3rd Floor	WT11	1248	1265	See Section Detail A1622 Dormer Window type-2		
W306	R320	6th Form Study	030 - 3rd Floor	WT21	2485	2710	See Section Detail A1666 Dormer Window type-3		
W307	R320	6th Form Study	030 - 3rd Floor	WT11	1248	1265	See Section Detail A1622 Dormer Window type-2		
W308	R301	Lobby	030 - 3rd Floor	WT09	1810	2710	Side Elevation Window @ Recessed Brickwork Panel See detail 2 & detail 3 @ A1645 (similar details)		
W309	R307	Small 6th Form Classroom	030 - 3rd Floor	WT08	2485	3535	See Section Detail A1622 Dormer Window type-1		
W310	R307	Small 6th Form Classroom	030 - 3rd Floor	WT11	1248	1265	See Section Detail A1622 Dormer Window type-2		
W311	R309	6th Form Classroom	030 - 3rd Floor	WT11	1248	1265	See Section Detail A1622 Dormer Window type-2		
W312	R309	6th Form Classroom	030 - 3rd Floor	WT08	2485	3535	See Section Detail A1622 Dormer Window type-1		
W313	R310	6th Form Classroom	030 - 3rd Floor	WT08	2485	3535	See Section Detail A1622 Dormer Window type-1		
W314	R310	6th Form Classroom	030 - 3rd Floor	WT11	1248	1265	See Section Detail A1622 Dormer Window type-2		
W315	R312	Lobby	030 - 3rd Floor	WT09	1810	2710	Side Elevation Window @ Recessed Brickwork Panel See detail 2 & detail 3 @ A1645 (similar details)		
W316	R313	6th Form Classroom	030 - 3rd Floor	WT11	1248	1265	See Section Detail A1622 Dormer Window type-2		
W317	R313	6th Form Classroom	030 - 3rd Floor	WT21	2485	2710	See Section Detail A1666 Dormer Window type-3		
W401	R303	Male WC	040 - Roof	WT16	840	1400	Velux roof windows - see detail A1665		
W402	R304	Female WC	040 - Roof	WT16	840	1400	Velux roof windows - see detail A1665		



Ventilation Louvres Schedule				
Vent Number	Type	S.O. Height	S.O.Width	Comments
V001	VT01	900	2485	Part of window system - WT04
V002	VT01	900	2485	Part of glazed door system - DT55
V003	VT02	460	1810	
V004	VT02	460	1810	
V005	VT04	900	1473	Part of window system - WT10
V006	VT02	460	1810	

Ventilation Louver Legend

1 : 50



Notes

NOTE
This drawing is not to be scaled. All dimensions to be checked on site and any discrepancies to be reported to the Mouchel Office. All material is produced on behalf of Mouchel Ltd. All drawings to be read in conjunction with specification where applicable.

Based upon the Ordnance Survey map with the permission of the Controller of Her Majesty's Stationery Office. © Crown Copyright Licence No. LA07649X.

- ALL DIMENSIONS TO BE CONFIRMED ON SITE PRIOR TO FABRICATION OF ANY COMPONENTS.
- ALL OPENING VENTS SHALL BE FITTED WITH KEY LOCKING HANDLES AND RESTRICTORS. LOCKS TO HAVE SUITED CYLINDERS.
- ALL EXTERIOR WINDOWS, SCREENS AND DOORS TO HAVE EXTENDED ALUMINIUM GILLS TO MATCH FRAMES.
- GENERALLY EXTERIOR FRAMES, DOOR FRAMES, DOORS AND COMPONENTS AND INSULATED ALUMINIUM FACED IN FILL PANELS TO BE POLYESTER POWDER COAT FINISHED TO RAL COLOUR 7016. NOTE THESE COLOURS ARE FOR PRICING ONLY AND MAY BE SUBJECT TO CHANGE LATER.
- EXTERIOR SEALED DOUBLE GLAZED UNITS TO CONSIST AS DESCRIBED IN THE SCHEDULE AND NOTES OPPOSITE.
- ENSURE THAT DPC'S, AROUND OPENINGS, ARE POSITIONED CORRECTLY IN RELATION TO FRAMES AND ARE NOT DISPLACED DURING FIXING OPERATIONS.
- ALL MANUALLY OPERATED WINDOW OPENINGS TO BE RESTRICTED TO 100MM MAX FROM THE EXTERNAL FACE OF THE BUILDING (INCLUDING FRAME AND HANDLE) ON THE GROUND FLOOR. ELSEWHERE TO PROVIDE 200MM MAXIMUM RESTRICTORS - ALL TO BE OVERRIDABLE.
- MISC. ITEMS: TO ALSO INCLUDE FOR THE FOLLOWING:
 - # PENETRATING ALUMINIUM AND PENETRATIVE WATER.
 - # ALL FIXINGS, BRACKETS, SPACERS, GILL MEMBERS (EXTENDED GILL SECTION REQUIRED) AND FLASHINGS TO THE SUPPORTING STRUCTURE AND OPENING.
 - # SECURITY BEADINGS IN POLYESTER POWDER COATED ALUMINIUM.
 - # ACCOMMODATION FOR THERMAL MOVEMENT.
 - # TRICKLE VENTILATION (SEE BELOW).
 - # GILLS SHOULD HAVE ADEQUATE PROJECTION FOR WEATHER AND COVER.
- WINDOW PERFORMANCE TO COMPLY WITH BS 5368 (AIR PERMEABILITY, WATER TIGHTNESS AND WIND RESISTANCE).
- ALL VENTILATION REQUIREMENTS SHALL COMPLY WITH THE CURRENT BUILDING REGULATIONS, APPROVED DOCUMENT 'F', PART F1.
 - * ALL VENTILATION REQUIREMENTS SHALL COMPLY WITH THE CURRENT BUILDING REGULATIONS, APPROVED DOCUMENT 'F', PART F1, IN ACCORDANCE WITH THE FOLLOWING:
 - * ROOM: RAPID VENTILATION: (EG. OPENING WINDOWS) OCCUPABLE ROOM: 1/20TH OF FLOOR AREA
 - * ROOM: BACKGROUND VENTILATION: (EG. TRICKLE VENTILATION) OCCUPABLE ROOM: FOR FLOOR AREAS UP TO 10M² = 4000MM² GREATER THAN 10M² = AT A RATE OF 4000 MM²/M² OF FLOOR AREA
 - * SANITARY ACCOMMODATION: 4000MM² PER WC.
 - * TRICKLE VENTS SHALL BE LOCATED WITHIN THE FRAME MEMBER NOT WITHIN THE GLASS.
- MANIFESTATION TO ALL FULL HEIGHT GLASS DOORS, AND SIDELIGHTS, SHALL BE PROVIDED AT 800mm AND 1500mm ABOVE FINISHED FLOOR LEVEL. WHERE INDICATED ON CURTAIN WALL TYPE. PATTERN TO BE CONFIRMED BY ARCHITECT.
- REFER TO STRUCTURAL ENGINEERS DRAWINGS FOR LINTEL DETAILS.
- ALL BLINDS TO BE OPERATED MANUALLY.
- ALL DOORS AND DOOR FRAMES MUST BE FLUSH WITH THE INTERNAL SURFACE. ESCAPE DOORS REQUIRE PANNELLING ABOVE AND BELOW THE CRASHBAR.

NOTE
BLACKOUT BLINDS REFER TO NBS N10 241.
NORMAL BLINDS REFER TO N10 241.

NBS SPECIFICATION REFERENCES FOR ALL EXTERNAL WINDOWS & CURTAIN WALLING ARE AS FOLLOWS:
EXTERNAL WINDOWS: NBS L10 335B
CURTAIN WALLING: NBS H11 110A

NOTE

ALL SPANDRELS TO BE FORMED WITH GLAZING WITH LIGHT GREY BACKING.

ALL OPENING WINDOW LIGHTS OVER 1500MM ABOVE FINISHED FLOOR LEVEL REQUIRE TELEFLEX WINDOW. TELEFLEX TO BE COLOURED - DARK GREY TO MATCH WINDOW/ CURTAIN WALLING FRAMES.

D	WT13 dimensions updated and added more reference to details on schedule table	RD	16/09/2015	OK	OK	OK
C	General schedule and detail updates and added curtain walling and vent louvre details	RD	05/08/2015	OK	OK	OK
B	Updated Kitchen Windows	JH	08/01/2015	OK	OK	OK
A	Added Kitchen Windows	JH	12/12/2014	OK	OK	OK
Version	Revision Description	Rev Date	Drawn by	Checked By		

mouchel building great relationships		Client	Morgan Sindall			
		Project	Bellerive			
Purpose	Construction	Drawing Title	External Window Schedule/ Curtain Walling Details			
Draft	Issue	Scale (at A1 size)	Issuing Office	LIVERPOOL	Drawing Number	Version
		1 : 50	Telephone	0151 600 5500	Bellerive/A/1405	D