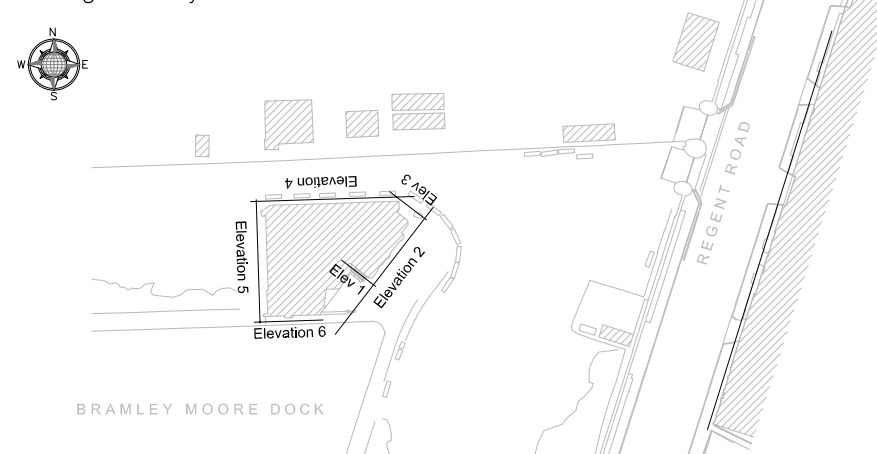


Generally, there is extensive weathering on all mortar joints with large areas missing mortar to extensive depth and re-pointing is required. Due to safety concerns it is not possible to ascertain any condition inside the structure.

Where roofing materials have failed, it is not possible yet to assess the extent of structural and internal dilapidation due to historic water ingress.

It is assumed that all electrical and mechanical services in the structure are abandoned.

Drawing Sheet Layout:



Copyright by Pattern Design Ltd. All rights reserved. This document may not, in whole or in part, be reproduced, stored, transmitted or distributed in any form or by any means, whether electronic, mechanical, by photocopy, recording or otherwise, without the prior written permission of Pattern Design. Except where otherwise expressly agreed in writing by Pattern, Pattern shall have no responsibility or liability for any loss (direct, consequential or otherwise) which may arise from reliance on or use of this document or the information contained therein.

1. DO NOT SCALE FROM THIS DRAWING
2. ALL DIMENSIONS ARE IN METRES AND LEVELS IN METERS UNLESS STATED OTHERWISE.
3. ALL DIMENSIONS TO BE VERIFIED ON SITE AND APPROVED BY THE ENGINEER. THIS DRAWING SHOULD BE READ IN CONJUNCTION WITH OTHER RELEVANT ARCHITECTURAL, STRUCTURAL, MECHANICAL AND ELECTRICAL DRAWINGS AND ALL RELEVANT SECTIONS OF THE SPECIFICATIONS.
4. ANY DISCREPANCIES FROM THE INFORMATION REPRESENTED HERE ARE TO BE REPORTED TO THE CLD BEFORE CONSTRUCTION.

Areas with potential structural implications

Areas of concern

P01	S3 - For Review and Comment	PM	JSK	13/11/19
Rev	Description	Apprv	Chk'd	Date

Brief details on the identified hazard symbol referencing the unusual residual hazards / risks are listed above.

Project Client
EVERTON STADIUM DEVELOPMENT LIMITED
GOODISON PARK
GOODISON ROAD
LIVERPOOL
MERSEYSIDE
UNITED KINGDOM
L4 4EL



Main Contractor

Architect
PATTERN DESIGN LIMITED
222 GRAY'S INN ROAD
LONDON
WC1X 8HB





Project Title
TPP-BRAMLEY MOORE DOCK - HYDRAULIC ENGINE HOUSE

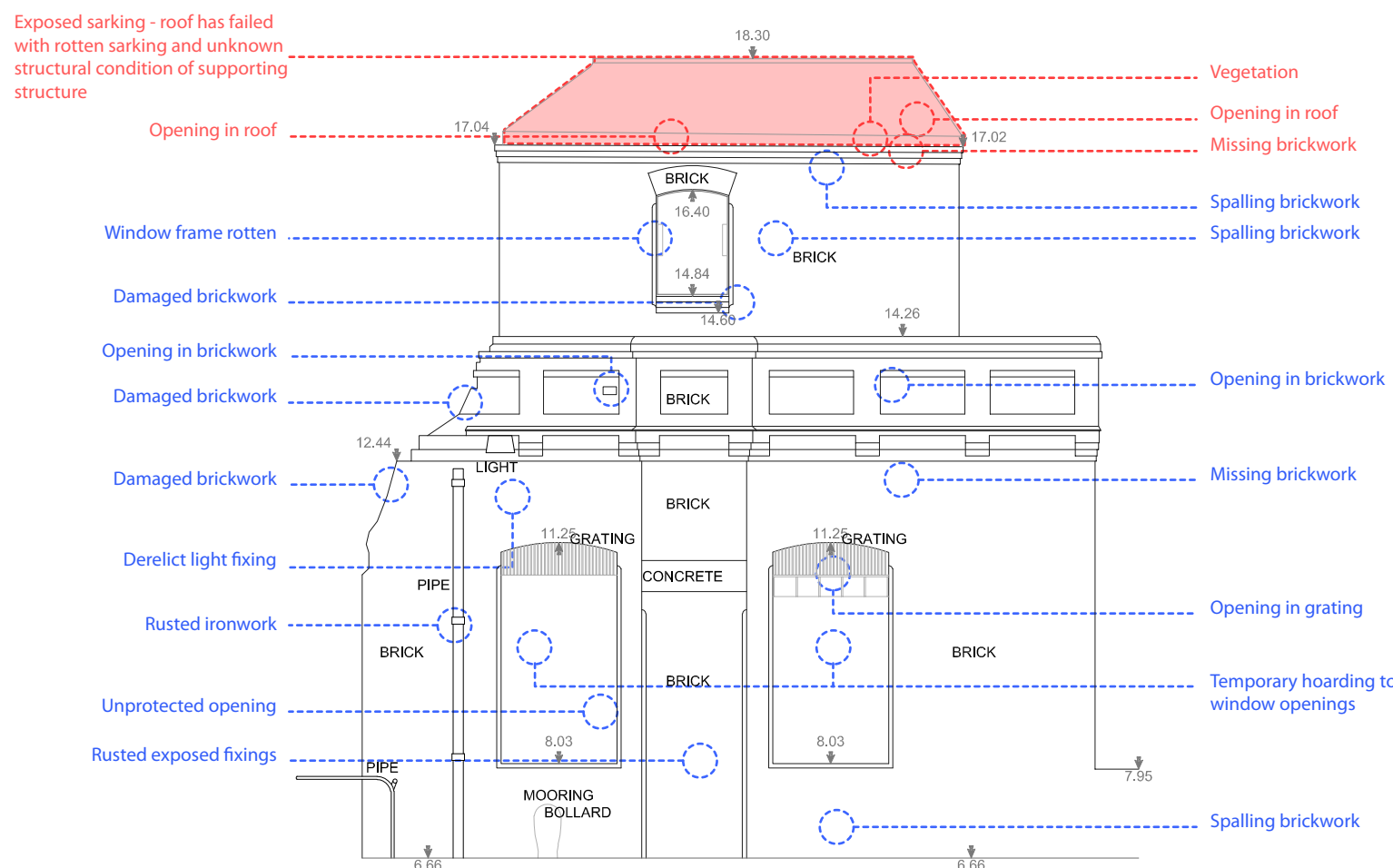
Drawing Title

BRAMLEY MOORE DOCK - HYDRAULIC ENGINE HOUSE BUILDING CONDITION ANALYSIS

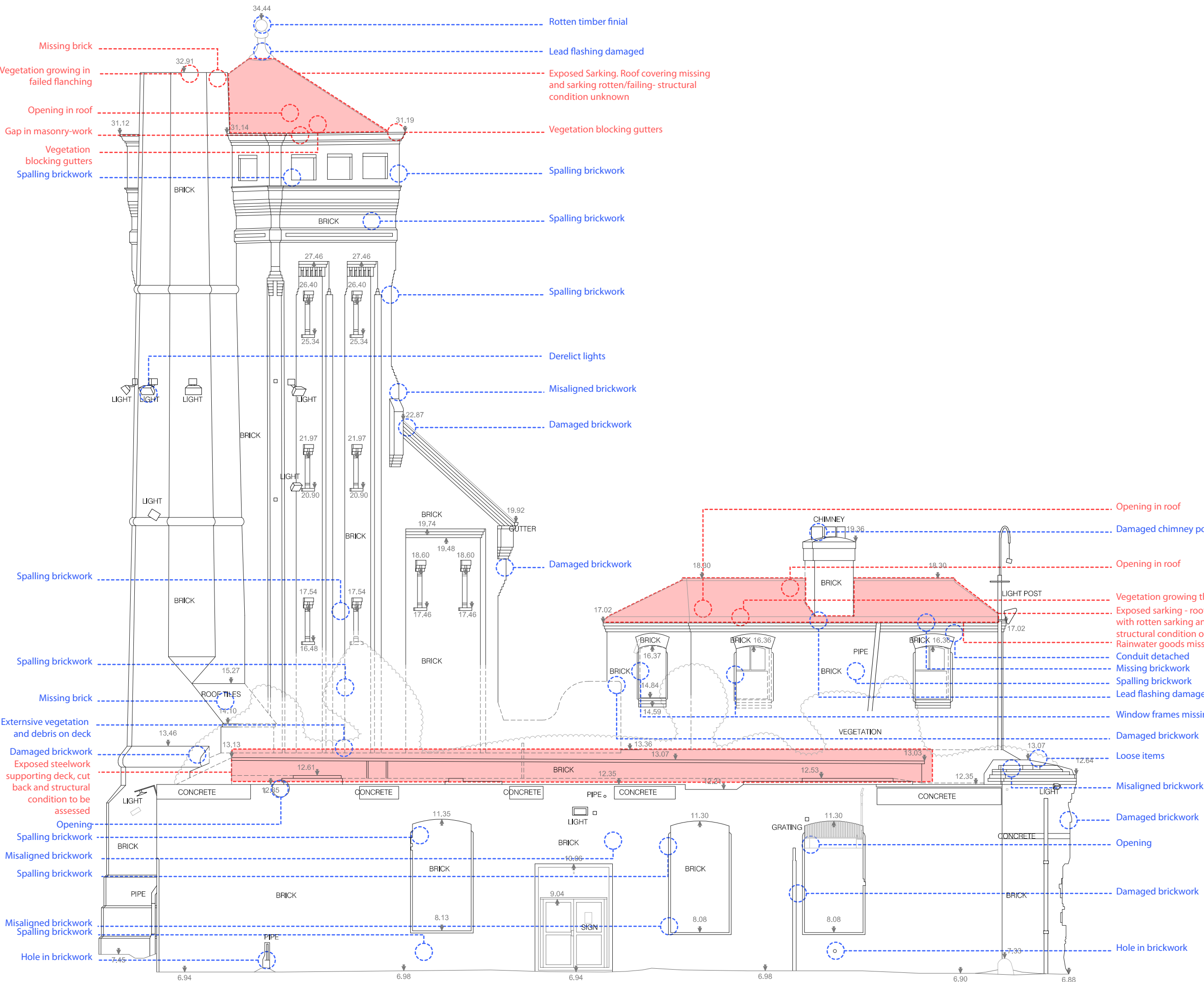
Purpose of Issue

PLANNING

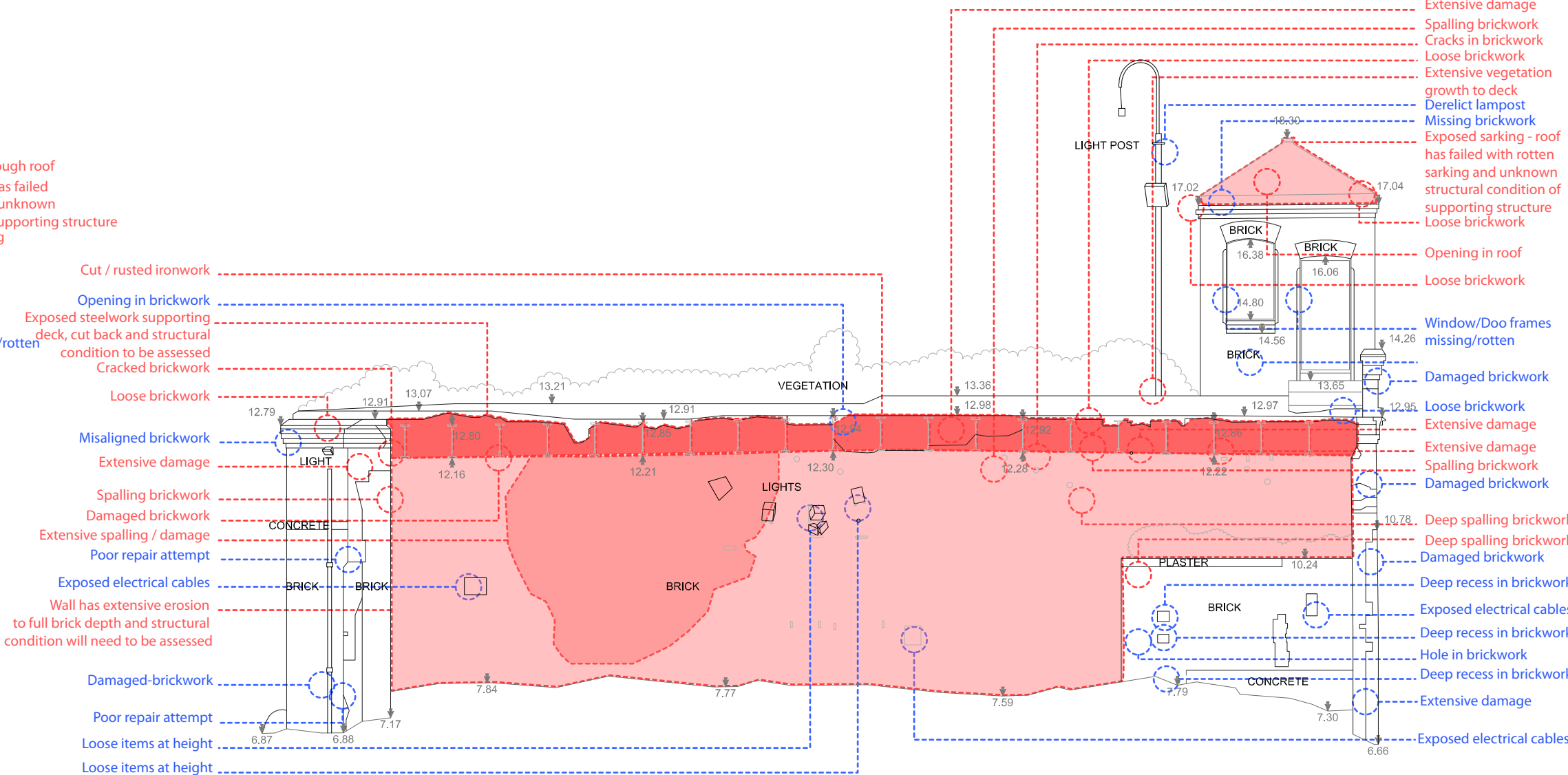
Checker Patrick Mitchell		Approved Jon-Scott Kohli	
Designed PATTERN		Drawn BM	Checked PM
Model File Ref: BMD01-PAT-A9-ZZ-M2-A-0002		Scale A1 (594x841) 1 : 100	Revision No
Drawing No BMD01-PAT-A9- ZZ-SU-A-2003			P01



ELEVATION 6
ENGINE HOUSE



ELEVATION 4
ENGINE HOUSE



ELEVATION 5
ENGINE HOUSE