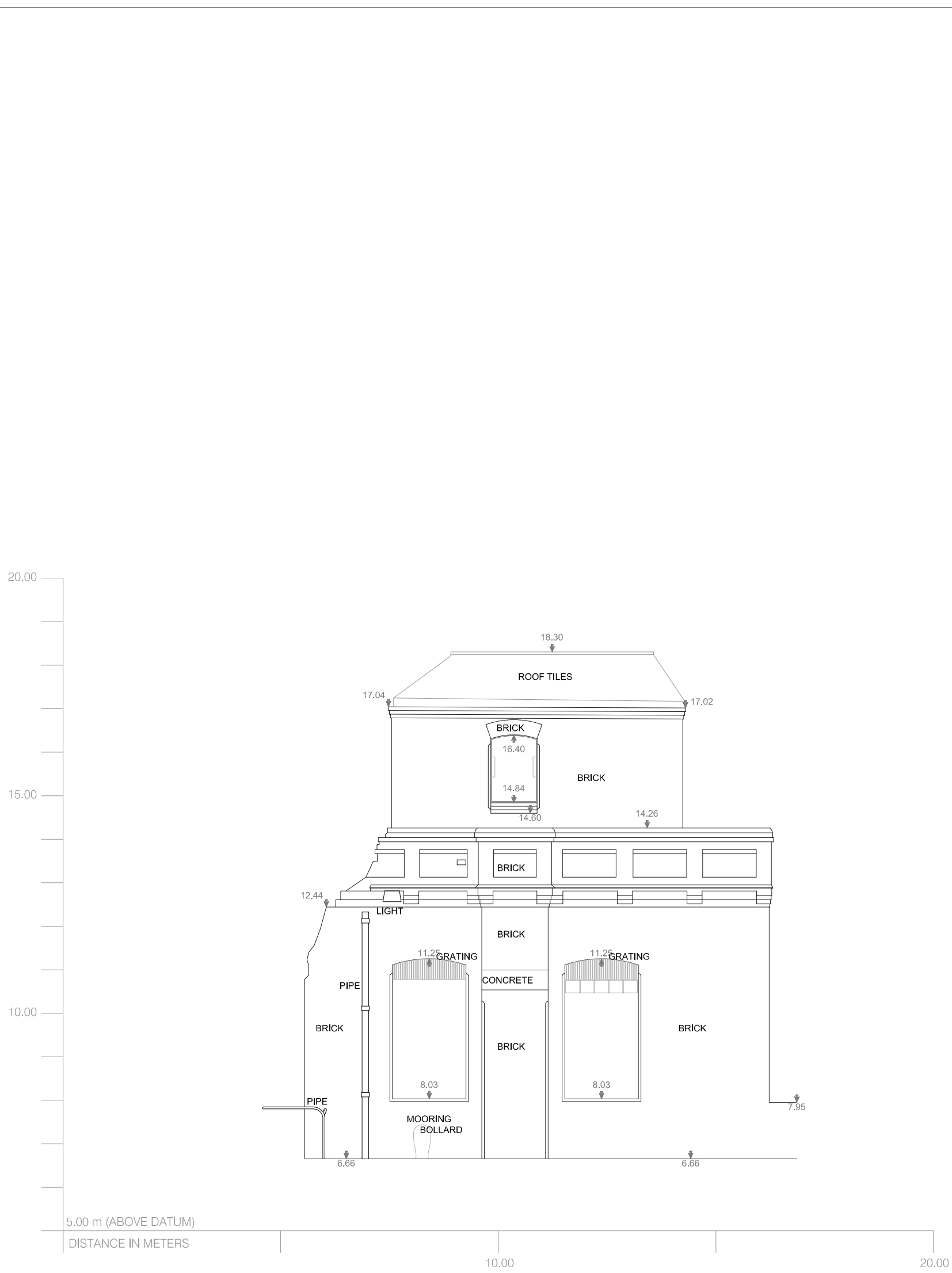
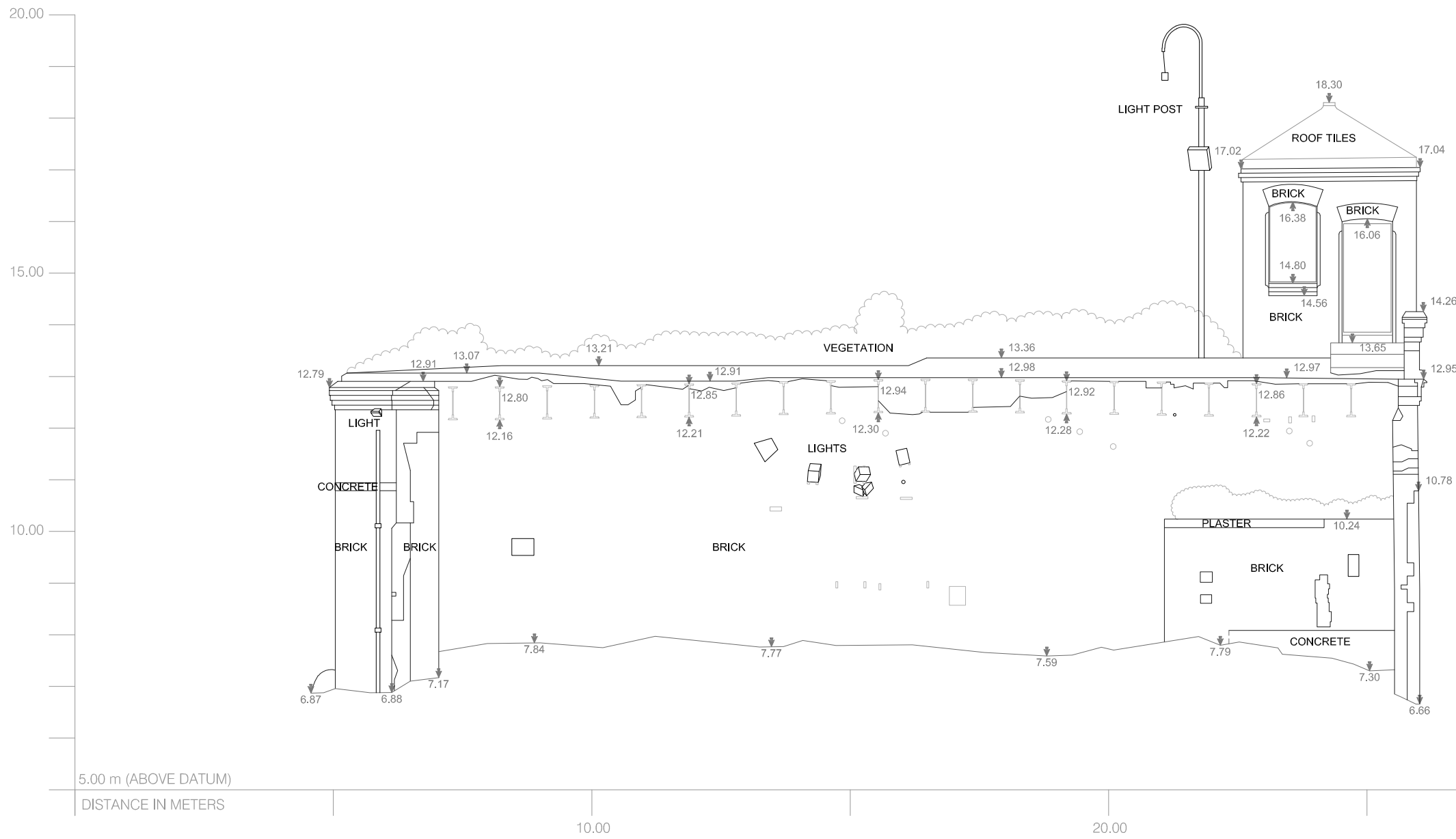


ELEVATION 4
ENGINE HOUSE

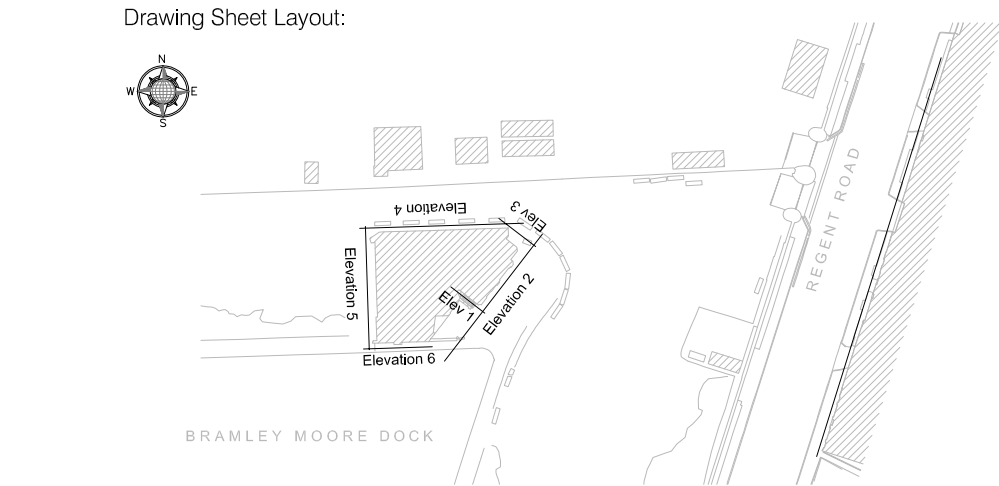


ELEVATION 6
ENGINE HOUSE



ELEVATION 5
ENGINE HOUSE

General Notes:



Copyright by Pattern Design Ltd. All rights reserved. This document may not, in whole or in part, be reproduced, stored, transmitted or distributed in any form or by any means, whether electronic, mechanical, by photocopy, recording or otherwise, without the prior written permission of Pattern Design. Except where otherwise expressly agreed in writing by Pattern, Pattern shall have no responsibility or liability for any loss (direct, consequential or otherwise) which may arise from reliance on or use of this document or the information contained therein.

1. DO NOT SCALE FROM THIS DRAWING
2. ALL DIMENSIONS ARE IN METRES AND LEVELS IN METERS UNLESS STATED OTHERWISE.
3. ALL DIMENSIONS TO BE VERIFIED ON SITE AND APPROVED BY THE ENGINEER. THIS DRAWING SHOULD BE READ IN CONJUNCTION WITH OTHER RELEVANT ARCHITECTURAL, STRUCTURAL, MECHANICAL AND ELECTRICAL DRAWINGS AND ALL RELEVANT SECTIONS OF THE SPECIFICATIONS.
4. ANY DISCREPANCIES FROM THE INFORMATION REPRESENTED HERE ARE TO BE REPORTED TO THE CLD BEFORE CONSTRUCTION.

Rev	Description	Apvr	Chk'd	Date
P02	S4 - PLANNING	PM	JSK	01/11/19
P01	S4 - PLANNING	PM	JSK	11/10/19
P00	S3 - PLANNING DRAFT	PM	JSK	29/09/19

SAFETY, HEALTH AND ENVIRONMENT INFORMATION
Brief details on the identified hazard symbol referencing the unusual residual hazards / risks are listed above.

Project Client
EVERTON STADIUM DEVELOPMENT LIMITED
GOODISON PARK
GOODISON ROAD
LIVERPOOL
MERSEYSIDE
UNITED KINGDOM
L4 4EL



Main Contractor

Architect
PATTERN DESIGN LIMITED
222 GRAY'S INN ROAD
LONDON
WC1X 8HB



Project Title
TPP-BRAMLEY MOORE DOCK - HYDRAULIC ENGINE HOUSE

Drawing Title
BRAMLEY MOORE DOCK - HYDRAULIC ENGINE HOUSE
EXISTING ELEVATIONS - 2

Purpose of Issue
PLANNING

Checker Patrick Mitchell	Approved Jon-Scott Kohli	Checked PM
Designed PATTERN	Drawn BM	Revision No P02
Model File Ref: BMD01-PAT-A9-ZZ-M2-A-0002	Scale A1 (594x841) 1 : 100	
Drawing No BMD01-PAT-A9-ZZ-SU-A-2001		